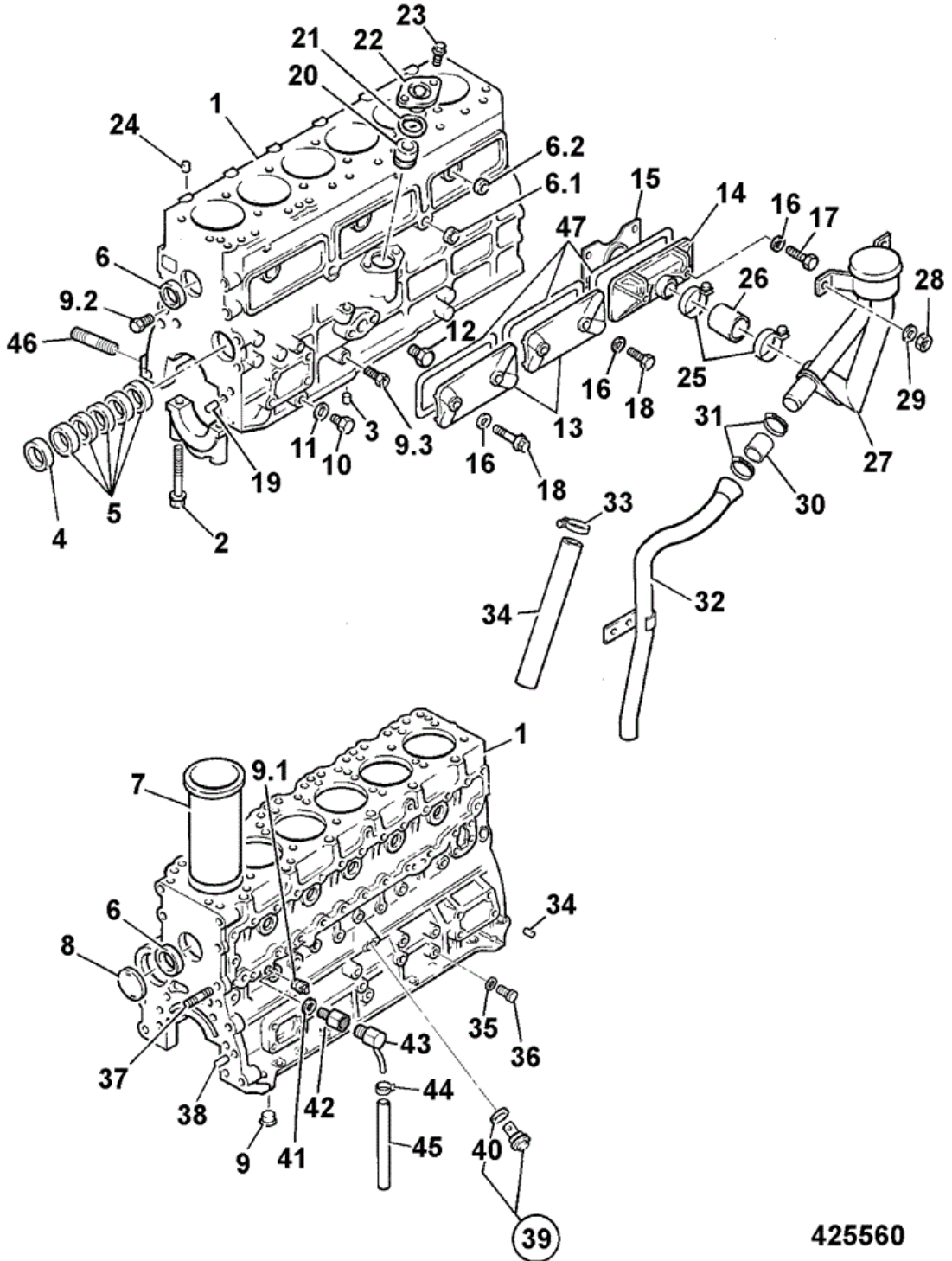




# 9802/5820 T1-3-1 BLOCK ASSEMBLY



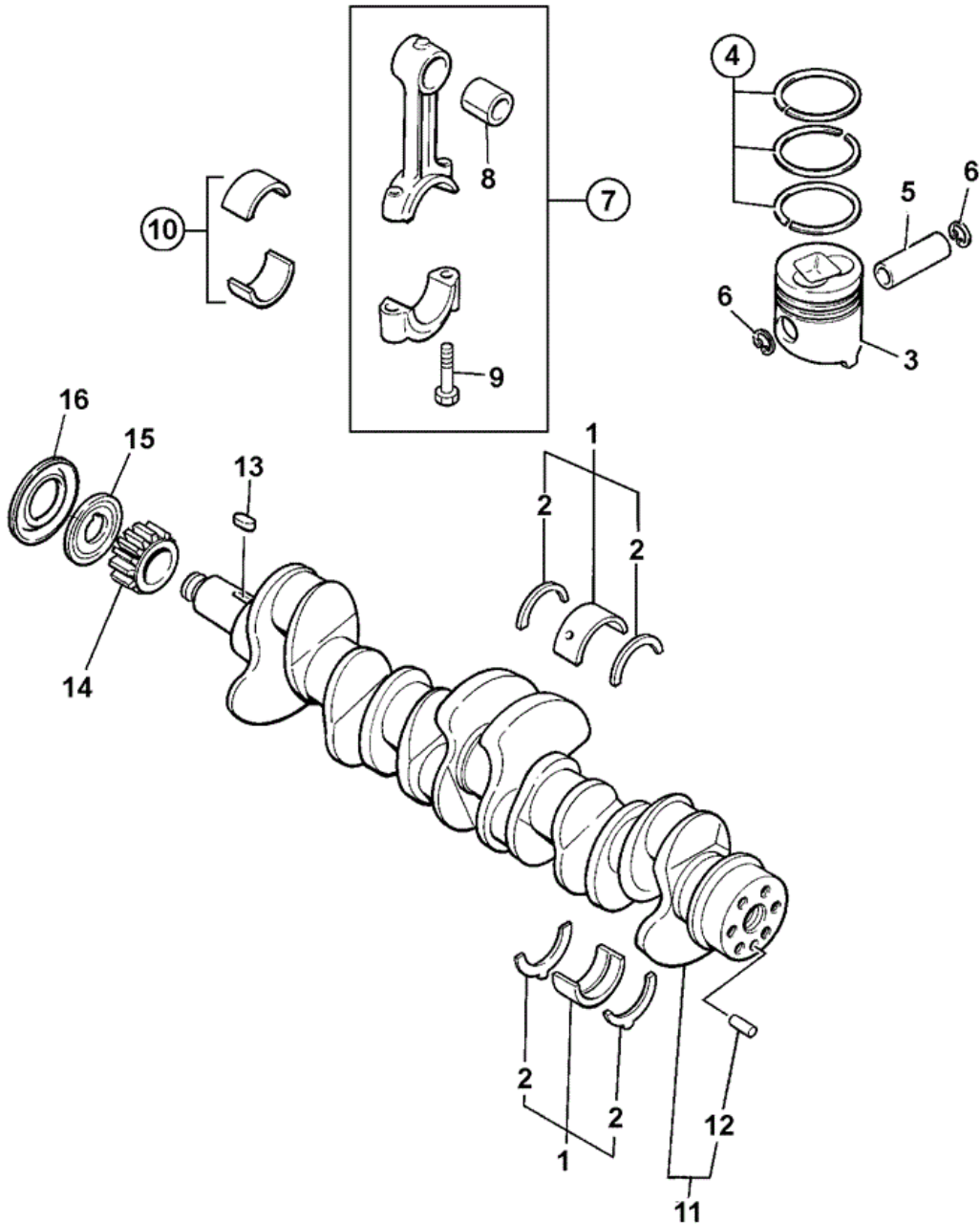
425560

Item	Part #	Change No	Description	Usage Code	QTY
1	02/801540		Block cylinder,assembly		1
2	:02/801541		Bolt		14

3	:02/800012		Dowel	1
4	:9116910480		Bearing camshaft, front	1
5	:9116930350		Bearing centre & rear	5
6	:1096000520		Plug d=60	2
6-1	:5112190140		Plug d=28	2
6-2	:1096000121		Plug tappet chamber, D=32	3
7	:02/801542		Liner cylinder	6
8	9098600190		Plug	1
9	1096050660		Plug D=3/8"	1
9-1	5096050180		Plug D=1/8"	11
9-2	1096050681		Plug	1
9-3	1096050681		Plug	1
10	9992023140		Plug	1
11	9095720140		Washer seal	1
12	1096601010		Connector	1
13	02/801548		Cover tappet chamber	2
14	02/801549		Cover tappet chamber	1
15	02/801552		Plate guide,tappet chamber	1
16	9095720080		Washer seal	6
17	1090520221		Bolt L=84	2
18	02/800007		Bolt L=56	4
19	02/800013		Pin D=10 X L=50	1
20	9112246021		Bush oil pump drive shaft	1
21	1096234650		O Ring	1
22	1112191291		Cover oil pump	1
23	0501408220		Bolt	2
24	8941480790		Dowel D=16	2
25	02/801545	<04/2003	Clip jubilee ID=45	3
25	5097040313	>05/2003	Clip hose	1
26	02/801547		Hose breather-cover L=53	1
27	02/801543		Breather engine oil	1
28	02/800882		Nut	2
29	9091646080		Washer plain	2
30	02/801550		Hose breather-pipe	1
31	02/801546		Clip jubilee ID=48	1
31-2	02/801545		Clip jubilee ID=45	1
32	02/801544		Pipe drain	1
33	9099156661		Clip hose	1
34	9081508160		Pin	2
34	9097130740	Superseded	Hose drain	1
34	02/800061		Tube	1
35	02/801551		Washer seal	1
36	9992023120		Plug M12X9	1
37	5093000231		Stud	1
38	9081510180		Pin D=10 x L=18	2
39	8970233390		Valve oil relief, assembly	1
40	:5096230350		O Ring	1
41	1096301150		Washer seal	1
42	1096660360		Connector	1
43	1096800240		Tap water drain	1
44	8970157540		Clip hose	1

45	02/800619		Pipe oil drain		1
46	1093000550		Stud L1=45		1
47	1112920200		Gasket		3

**JCB** 9802/5820 T1-4-1 CRANKSHAFT, BEARINGS PISTONS & CON-RODS

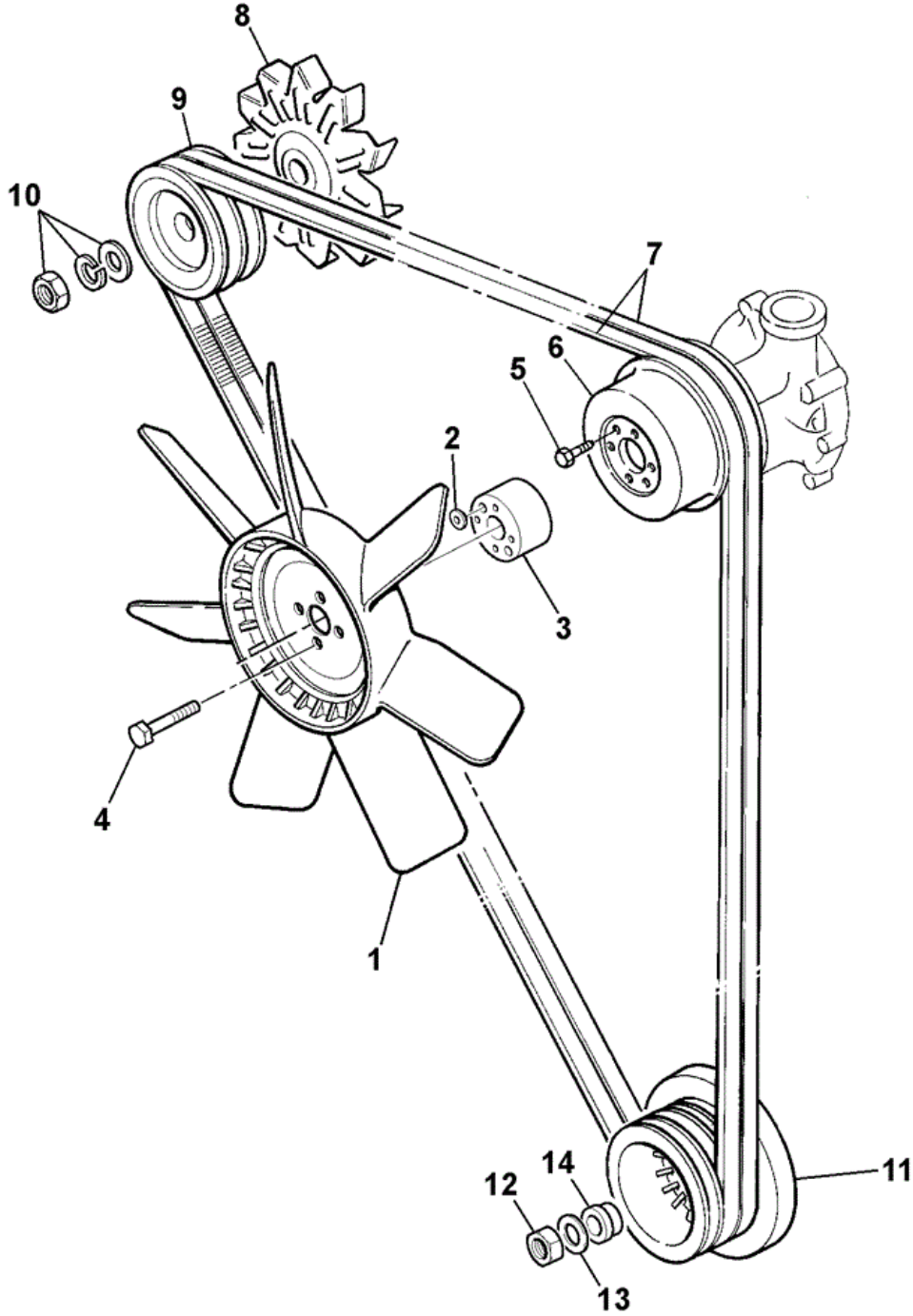


425170

Item	Part #	Change No	Description	Usage Code	QTY
1	02/801514		Kit-main bearing standard		1

2	:02/801515		Kit-thrust washer standard	2
3	02/801516	<FEB.2003	Piston grade=AX	0
3	02/801641	>MAR.2003	Piston AX grade	0
3	02/801517	<FEB.2003	Piston grade=CX	0
3	02/801642	>MAR.2003	Piston piston CX grade	0
4	02/801518		Kit-piston ring standard	6
5	02/800305		Pin gudgeon	6
6	02/801519		Ring snap,piston pin	12
7	02/800310		Rod connecting, assembly	6
8	:02/800306		Bush small end	1
9	:1122350271		Bolt	2
10	9122716080		Kit-big end Standard	6
10	9122736080		Kit-big end undersize - 0.25	0
10	9122746080		Kit-big end undersize - 0.50	0
11	1123104700		Crankshaft assembly	1
12	:9081512200		Pin	1
13	5097380010		Key	1
14	02/800318		Gear crankshaft	1
15	1123620031		Flinger oil	1
16	5123620031		Seal dust, thrower	1

**JCB** 9802/5820 T1-5-1 FANS, PULLEYS & FAN BELT

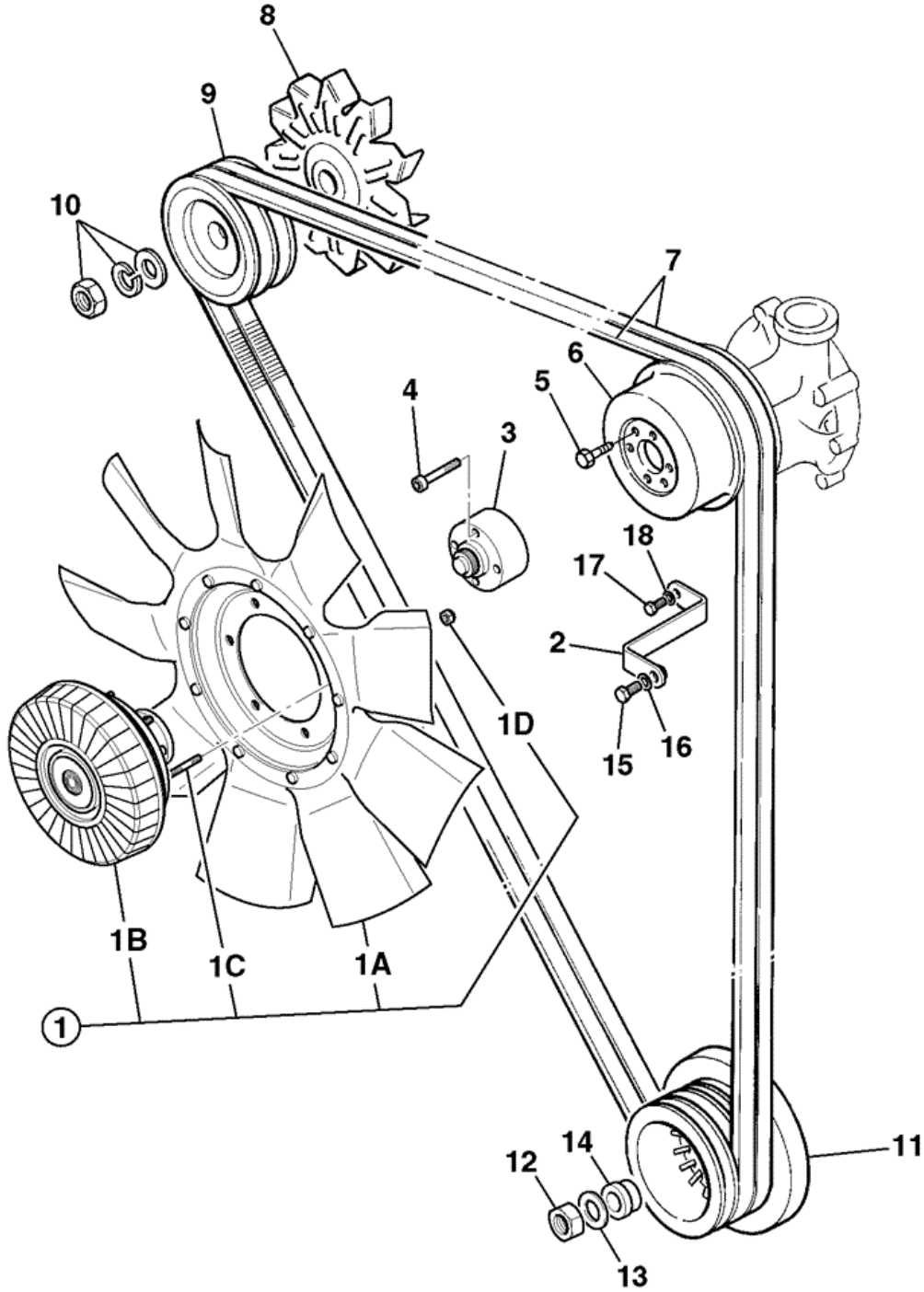


425051

Item	Part #	Change No	Description	Usage Code	QTY
1	30/925695		Fan 24" cooling		1
2	331/35722		Collar fan mounting		1

3	331/35419	Superseded	Spacer fan	1
3	829/31408	>JAN-2006	Spacer fan heavy duty pump	1
4	1315/3319Z		Bolt M8 x 90 mm	4
5	9034906100		Screw	2
6	02/801500		Pulley water pump	1
7	02/801499		Belt fan, (PAIR) L=1256	1
8	1812230050		Fan alternator <i>Alternator, See Section C2</i>	1
9	1812220550	Superseded	Pulley alternator <i>Alternator, See Section C2</i>	1
9	714/25101		Pulley alternator twin groove	1
10	****		'See Remark' <i>Alternator, See Section C2</i>	1
11	1123712480		Pulley crankshaft	1
12	9098401071		Nut	1
13	9098514310		Washer	1
14	02/801586		Bush	1

**JCB** 9802/5820 T1-5-2 FANS,PULLEYS & FAN BELT EU ONLY



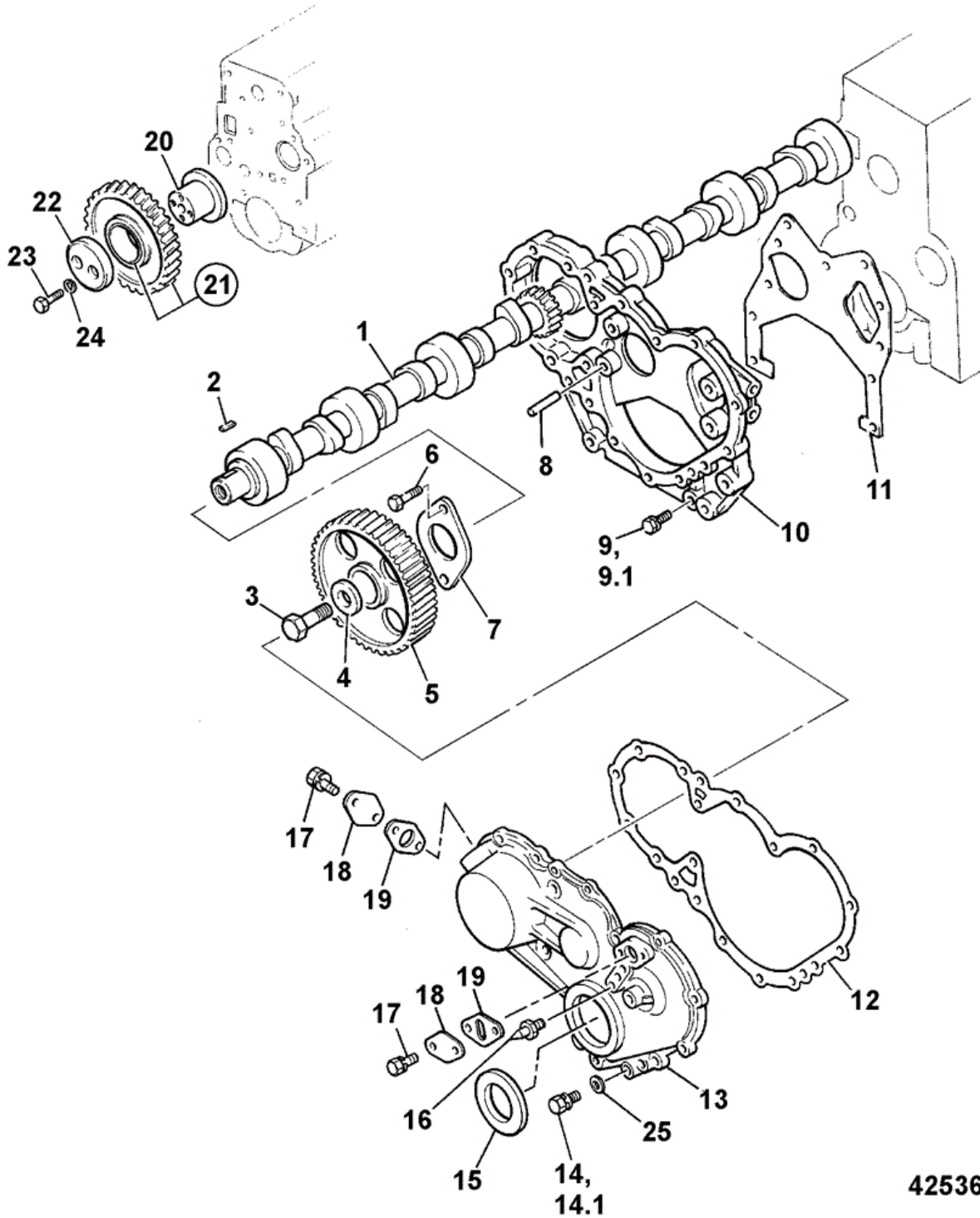
819071

Item	Part #	Change No	Description	Usage Code	QTY
1	30/926602		Fan viscous drive 610mm dia		1
1A	:30/927053		Fan 610mm dia		1



1B	:30/927047		Coupling viscous fan	1
1C	:30/927058		Bolt	6
1D	:30/927041		Sensor anti-rotation c/w fittings and Bracket	1
2	335/10787		Bracket cable retention	1
3	829/31407		Spacer fan viscous drive	1
4	1391/3312D		Capscrew M8 x 50mm	4
5	9034906100		Screw	2
6	02/802029		Pulley water pump	1
7	02/801499		Belt fan, (PAIR) L=1256	1
8	714/27220		Fan generator <i>Alternator see section C2</i>	1
9	714/25101		Pulley alternator twin groove <i>Alternator see section C2</i>	1
10	****		'See Remark' <i>Alternator see section C2</i>	1
11	1123712480		Pulley crankshaft	1
12	9098401071		Nut	1
13	9098514310		Washer	1
14	02/801586		Bush	1
15	1316/0203D		Screw	1
16	1420/0006D		Washer (M6)	1
17	1316/0405D		Screw M10 x 20	1
18	1420/0008D		Washer (M10)	1

**JCB** 9802/5820 T1-6-1 CAMSHAFT & GEARS TIMING CASE

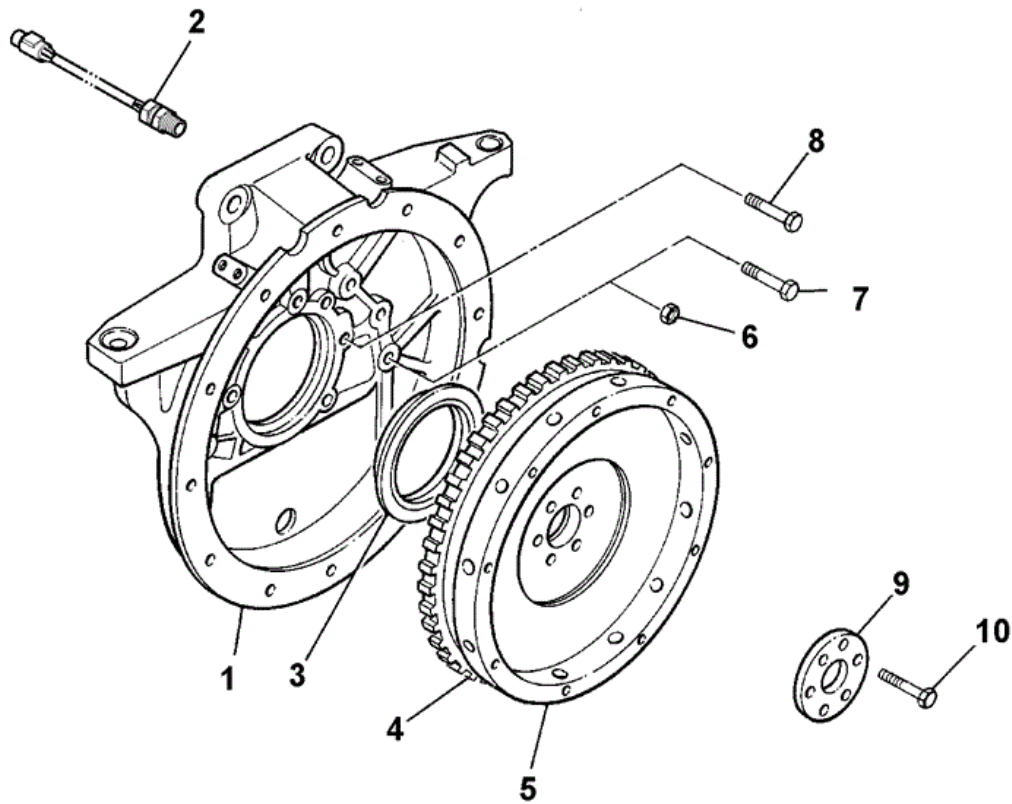


425360

Item	Part #	Change No	Description	Usage Code	QTY
1	02/800431	<JAN.2003	Camshaft		1
1	02/801705	>FEB.2003	Camshaft		1

2	9080307130		Key	1
3	9920614280		Bolt	1
4	02/800009		Washer cam	1
5	02/801528		Gear camshaft	1
6	0500408250		Bolt	2
7	9116810150		Plate thrust	1
8	9081510180		Pin D=10 x L=18	1
9	02/800915		Bolt flange head M8 X 45mm	2
9-1	02/800949		Bolt flange head M8 X 20mm	4
10	5113110113		Casing timing	1
11	02/800322		Gasket timing case	1
12	02/801527		Gasket timing cover	1
13	1113210790		Cover timing	1
14	02/801303		Bolt flange head M8 x 50	3
14-1	02/800911		Bolt flange head M8 X 25mm	6
15	1096254380		Seal oil, front	1
16	5113270090		Pointer timing	1
17	0280806120		Bolt flange head M6 x 12	4
18	02/800254		Cover inspection	2
19	02/800430		Gasket inspection cover	2
20	9125310300		Hub idler gear	1
21	02/800327		Gear idler	1
22	5125350011		Collar thrust	1
23	0108110550		Bolt	2
24	9091505100		Washer spring	2
25	9091605080		Washer plain	5

**JCB** 9802/5820 T1-7-1 FLYWHEEL & HOUSING

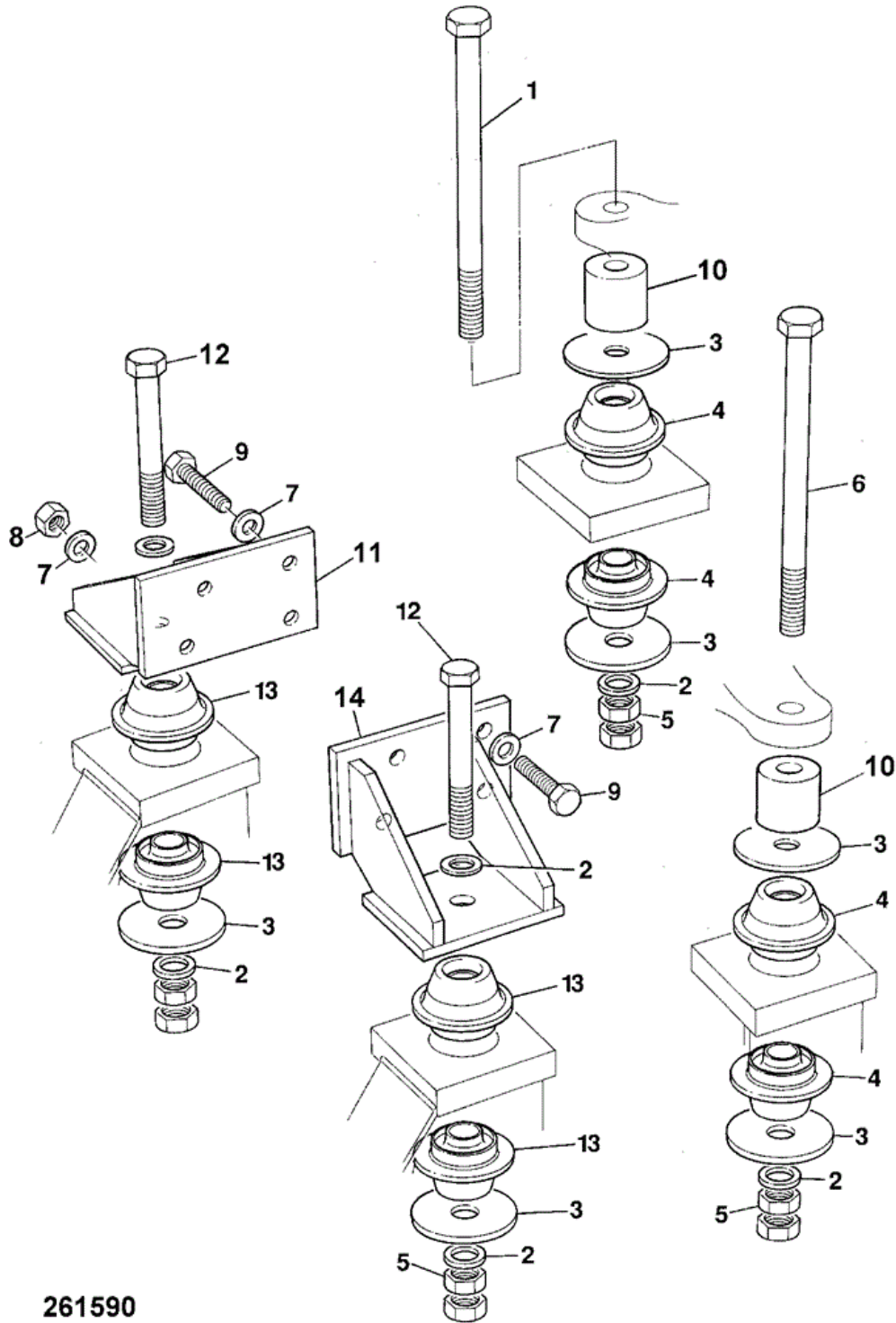


**425230**

Item	Part #	Change No	Description	Usage Code	QTY
1	02/801521		Housing flywheel		1
2	701/54300		Switch sender tachometer		1

3	02/801525		Seal oil,rear	1
4	1123330170		Gear ring	1
5	02/800433		Flywheel assembly	1
6	02/801522		Nut	1
7	0500408250		Bolt	7
8	02/801523		Bolt M14 x 45	5
8	02/801524		Bolt M14 x 60	2
9	5123360081		Washer	1
10	9920616380		Bolt	6

**JCB** 9802/5820 T1-8-1 ENGINE MOUNTINGS



261590

Item	Part #	Change No	Description	Usage Code	QTY
1	1316/3731Z		Bolt M16 x 220		1
2	JHP0043		Washer M16		6

**Thank you very much for  
your reading. Please Click  
Here. Then Get COMPLETE  
MANUAL. NO WAITING**



**NOTE:**

**If there is no response to  
click on the link above,  
please download the PDF  
document first and then  
click on it.**

3	KNH0589		Plate	6
4	KRH0780		Mounting metalastik <i>Colour coded blue</i>	1
5	162R016VZ		Nut high strength	8
6	1316/3731Z		Bolt M16 x 220	1
7	JHP0046		Washer M10	8
8	C4E7863		Nut High Strength	1
9	KEH0122		Bolt high strength	7
10	KRH0479		Spacer	2
11	KNH0527		Bracket engine mounting	1
12	1316/3724Z		Bolt	2
13	KRH0781		Mounting metalastik <i>Colour coded yellow</i>	4
14	KNH0586		Bracket engine mounting	1