

MASSEY FERGUSON

MF 9500

Series Combines

Model: 9545 / 9565



OPERATOR'S MANUAL

FROM MASSEY FERGUSON



MASSEY FERGUSON®

TO OUR CUSTOMER:

Congratulations on your selection of a Massey Ferguson® Product. We believe you have exercised excellent judgment in the purchase of your Massey Ferguson® machine. We are most appreciative of your patronage.

Your Dealer has performed the pre-delivery service on your new machine.

He will discuss with you the operating and maintenance instructions given in this manual, and instruct you in the proper and varied applications of this machine. Call on him at any time when you have a question or need equipment related to the use of your machine.

We recommend that you carefully read this entire manual before operating the unit. Also, time spent in becoming fully acquainted with it's performance features, adjustments, and maintenance schedules will be repaid in a long and satisfactory life of the product.

This equipment is covered by a written warranty which will be provided to you by your Massey Ferguson® Dealer at time of purchase.

AGCO® reserves the right to make changes or add improvements to its products at any time without incurring any obligation to make such changes to products manufactured previously. AGCO®, or its dealers, accept no responsibility for variations which may be evident in the actual specifications of its products and the statements and descriptions contained in this publication.

Massey Ferguson® is a worldwide brand of AGCO Corporation, Duluth, Georgia

**CALIFORNIA
Proposition 65 Warning**

WARNING: Diesel engine exhaust and some of its constituents are known to the State of California to cause cancer, birth defects, and other reproductive harm.

WARNING: Battery posts, terminals and related accessories contain lead and lead compounds, chemicals known to the State of California to cause cancer, birth defects, and other reproductive harm. Wash hands after handling.

GENERAL INFORMATION

Contents

Introduction	B-3
Units of Measurements	B-3
Replacement Parts	B-3
Serial Number Plate Location	B-3
Machine Serial Number	B-3
Engine Serial Number	B-4
Transmission Serial Number	B-4
Final Drive Serial Number	B-4
Dealer Information	B-5
Serial Number Definition	B-5
Machine Main Components	B-6
How A Combine Works	B-7
Cutting and Feeding	B-7
Threshing and Separating	B-7
Cleaning	B-8
Headers	B-8
Disposal	B-8
Disposal of Waste	B-8
Disposal of Machine	B-8
Intended Use	B-8
Emissions Warranty	B-9

INTRODUCTION

The operating and maintenance instructions included in this manual are assembled from field testing and other data. The information is written for general conditions. Make adjustments as necessary for specific conditions.

This manual includes information only for the combine only. For information regarding the header, refer to the header Operator Manual.

UNITS OF MEASUREMENTS

Measurements are given in metric units followed by the U.S. unit equivalent. Hardware sizes are given in millimeters (mm) for metric hardware and inches for U.S. hardware.

REPLACEMENT PARTS

To receive efficient service, always give the dealer the following information:

- Correct part description or part number.
- Model number of the machine.
- Serial number of the machine.

SERIAL NUMBER PLATE LOCATION

Your combine is identified by serial numbers which are important if you require service or repair parts.

Machine Serial Number

FIG. 1: The machine serial number plate (1) is located on the right-hand side of the combine, below the right-hand operator platform.



FIG. 1

GENERAL INFORMATION

Engine Serial Number

FIG. 2: The engine serial number is on the engine data plate (1) located on the side of the cylinder head.

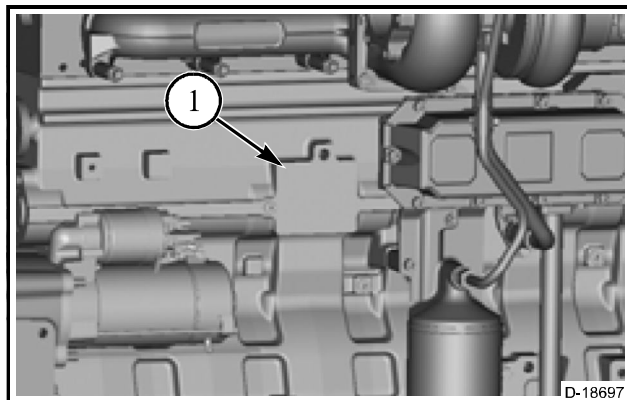


FIG. 2

Transmission Serial Number

FIG. 3: The transmission serial number is stamped on the serial number plate (1) that is installed on the left-hand side of the transmission housing.

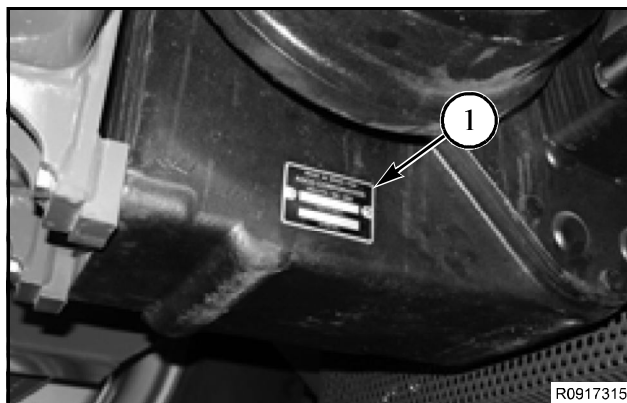


FIG. 3

Final Drive Serial Number

FIG. 4: The final drive serial number is stamped on the plate that is on the inner half of the final drive housing at location (1).

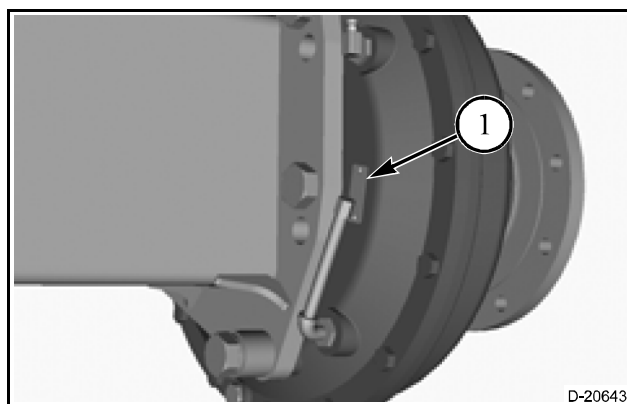


FIG. 4

DEALER INFORMATION

Record the serial numbers from the serial plate on your combine in the spaces provided for easy reference for your dealer.

Machine Model Number: _____

Machine Serial Number: _____

Engine Serial Number: _____

Transmission Serial Number: _____

Final Drive Serial Number: _____

Date of Delivery: _____

Dealer Name and Address:

Dealer Telephone Number: _____

Dealer Fax Number: _____

SERIAL NUMBER DEFINITION

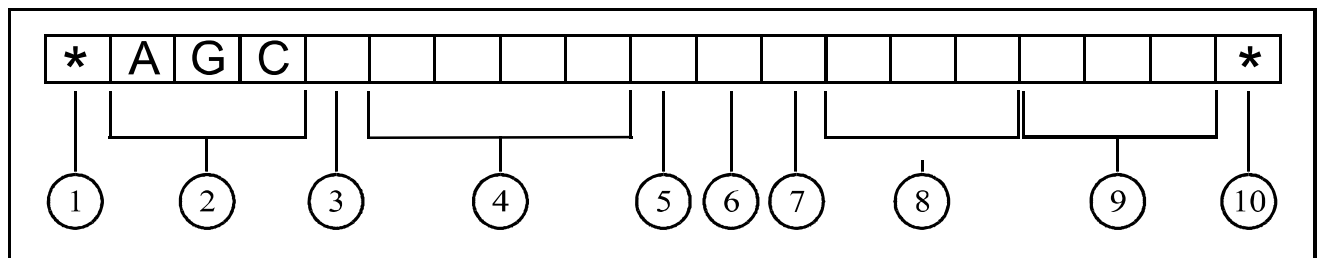


FIG. 5

FIG. 5: Definition of the serial number for model year 2010 and up.

- (1) Beginning symbol
- (2) World Manufacturer Code
- (3) Brand Code
- (4) Model Identifier (Model number)
- (5) Check Letter (0 or used if model identifier is five digits)
- (6) Model Year Code (A=2010, B=2011, C=2012, and on)
- (7) Plant Code
- (8) Family Code
- (9) Unit Number for the Year
- (10) Ending symbol

NOTE: For serial number breaks in this manual, only the information from the model year code and following will be given.

GENERAL INFORMATION

MACHINE MAIN COMPONENTS

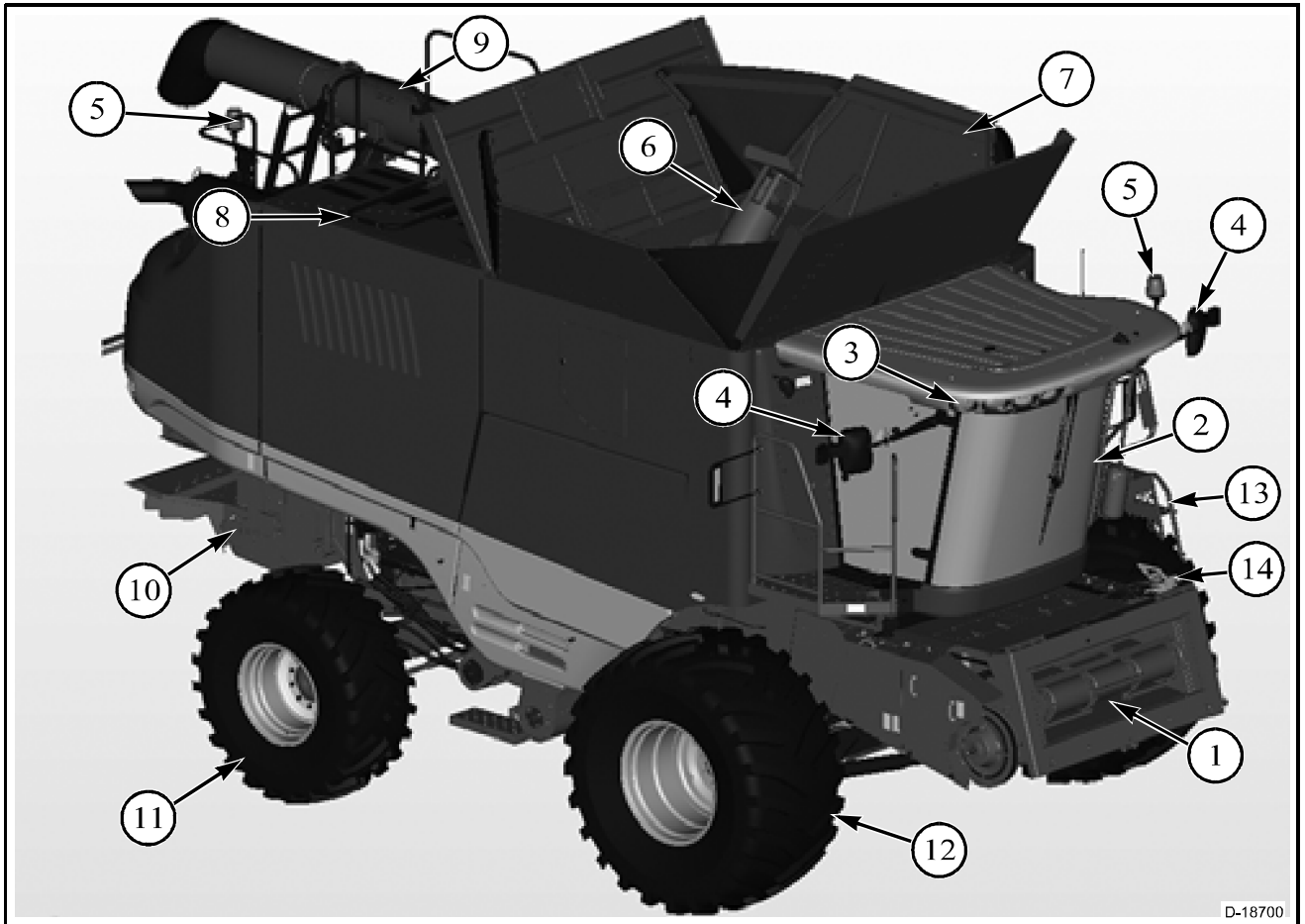


FIG. 6

FIG. 6: Some of the main components of the combine are as follows:

1. Feeder
2. Operator Cab
3. Roof Lamps
4. Rear View Mirrors
5. Beacon Lamp
6. Grain Tank Loading Auger
7. Grain Tank
8. Engine Compartment
9. Grain Tank Unloading Auger
10. Straw Chopper
11. Steering Axle
12. Drive Axle
13. Operator Platform Ladder
14. Single Point Header Connection

HOW A COMBINE WORKS

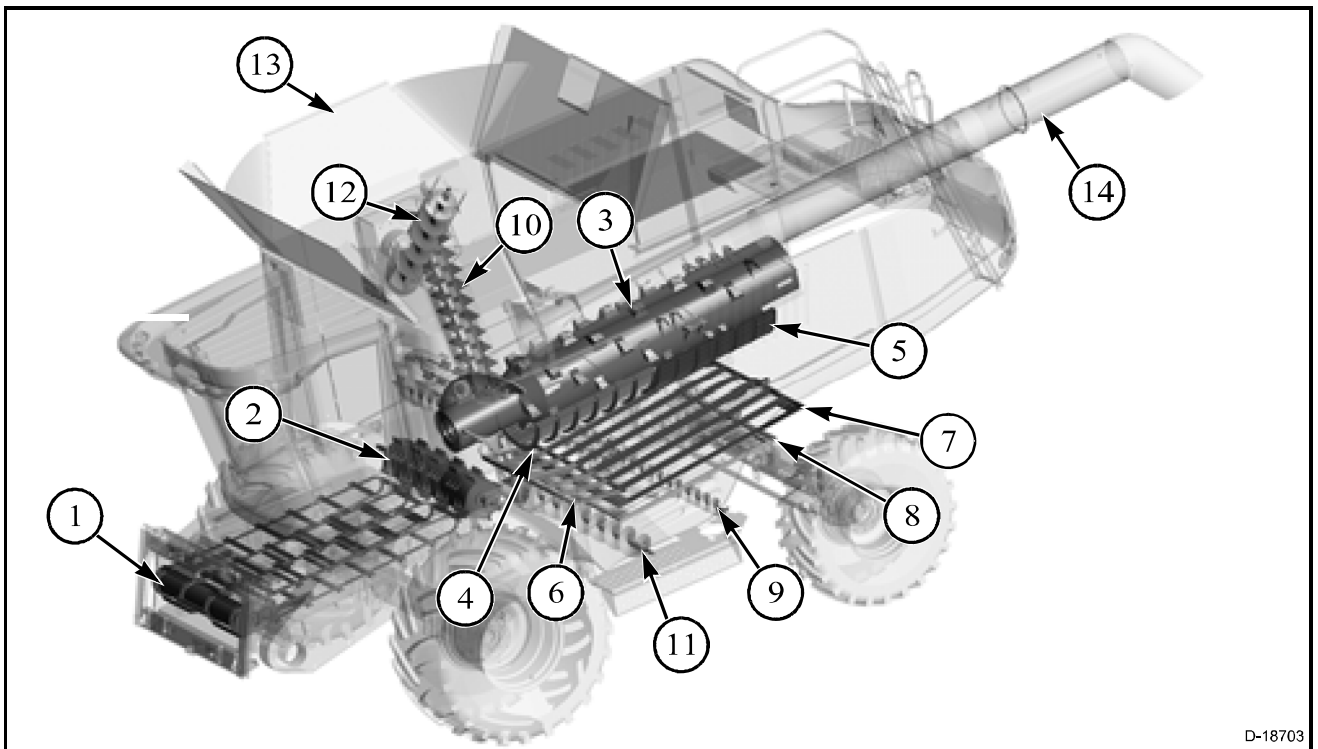


FIG. 7

FIG. 7: Four functions are done in the overall harvesting operation of a combine. These are:

- Cutting and Feeding
- Threshing
- Separating
- Cleaning

Cutting and Feeding

The crop is gathered by a header which is supported by a feeder housing.

A grain header uses a reel to direct the crop into the header auger after the crop is cut by the sickle and the header auger or draper conveys the crop into the feeder (1).

A pickup header is used when the crop has already been cut and laying in a swath. The crop is lifted by a pickup and fed to the header auger where the retractable fingers move the crop into the feeder.

A corn header is used to harvest corn. Gathering chains gather the stalks of corn in between the row dividers. The corn stalks are pulled down through the stripper plates by the snapping rolls. The stripper plates strip the ears of corn from the stalk. The ears are fed to the center of the header by an auger and fed in the feeder.

The feeder transports the crop to the front of the feeder impeller (2) which moves the crop to the rotor inlet area and the rotor (3). The feeder impeller also guides rocks and other foreign objects into the stone trap located forward and below the feeder impeller.

Threshing and Separating

The rotor does four functions as the crop moves in rotary motion from front to rear:

- Intake
- Threshing
- Separating
- Discharge

The auger flighting in the intake area starts the crop on a spiral route around the rotor and moves the crop to the threshing area.

Threshing and initial separation are done in the threshing area by the rotor and the stationary open grate concave (4). Contact with the helical guide vanes causes the material to move rearward and in a circular route, letting the material pass over the concave several times.

Remaining separation occurs in the separating area. Centrifugal force carries the grain and chaff through the separator grate (5) while the straw moves rearward in the rotor cage. Again, the spiral motion of the crop lets the crop pass over the separating grates several times.

Cylinder bars on the rotating rotor hold the crop against the grates until the crop reaches the end. Paddles then bat the material into a discharge chute where the crop is moved to a straw spreader, chopper, or discharged directly to the ground.

GENERAL INFORMATION

Grain, chaff, and 14 heads which have passed through the separator grates drop to the cleaning shoe by the separator return pan.

Cleaning

The material is moved from the front of the separator return pan to the chaffer pre-cleaner (6) which in turn moves the mixture across a fingered comb and into the front of the chaffer sieve.

The cleaning fan supplies air to keep the chaff in suspension during the cleaning process in the shoe.

The air passing through the reciprocating adjustable chaffer (7) separates and blows the chaff out of the combine. The grain and tailings drop through to the cleaning sieve.

The adjustable cleaning sieve (8) does the final cleaning. The clean grain falls through the sieve into the clean grain auger trough. The tailings, chaff, and other material continue to the end of the sieve and down to the return auger trough (9) to be processed again.

The grain elevator paddle chain (10) conveys the clean grain from the clean grain auger (11) to the grain tank filling auger (12) and into the grain tank (13). The return elevator carries the tailings back to the rotor intake for threshing and processing.

The grain in the grain tank is unloaded into a truck or trailer through the unloading auger (14).

HEADERS

The combine is equipped with a quick attach feeder for fast and easy hook up of headers. The quick attach feature allows service, transport, and storage of both the header and the combine.

The combine can be equipped with the following type of headers:

- Rigid Grain Headers
- Flexible Cutterbar Headers
- Pickup Headers
- Corn Headers
- Stripper Headers
- Draper Headers

NOTE: Refer to the Operator Manual, supplied with header, for operating information.

DISPOSAL

Improper disposal of waste can pollute the environment and ecology. A few examples of potentially harmful waste from AGCO equipment include, but not limited to, items such as oil, fuel, coolant, brake fluid, filters, battery chemicals, tires, etc.

Disposal of Waste

Use leak proof containers when draining fluids. Do not use food or beverage containers to collect waste fluids, as food or beverage container(s) may mislead someone to eat or drink from them.

Do not pour or spill waste on the ground, down a drain, or in any water source.

Air conditioning refrigerants escaping into the air can damage the Earth's atmosphere. Government regulations may require a certified air conditioning service center to recover and recycle used air conditioning refrigerants.

Inquire with local environmental or recycling center on the proper way to recycle or dispose of waste.

Disposal of Machine

Prior to disposal of the machine, remove all fluids, refrigerant and toxic materials from the combine. Send the fluids and toxic materials to their respective recyclers.

NOTE: Do not vent refrigerant into the atmosphere. Contact a certified person to reclaim the refrigerant.

Contact an authorized company or person to vent the nitrogen from the hydraulic accumulator.

When the machine is ready to be disposed of, contact your local scrap iron dealer or approved landfill site for solid non-hazardous waste.

INTENDED USE

This machine is designed solely for use in customary agricultural operations.

Do not use this machine for any application or purpose other than those described in this manual. The manufacturer accepts no liability for damage or injury resulting from misuse of this machine.

Compliance with the conditions of operation, service and repair as specified by the manufacturer constitute essential elements for the intended use of this machine.

This machine should be operated, serviced and repaired only by qualified persons familiar with its characteristics and familiar with the relevant safety rules and procedures.

All generally recognized safety regulations and road traffic regulations must be obeyed at all times.

Any unauthorized modifications performed on this machine will relieve the manufacturer of all liability for any resulting damage or injury.

EMISSIONS WARRANTY



CALIFORNIA EMISSION CONTROL WARRANTY STATEMENT

YOUR WARRANTY RIGHTS AND OBLIGATIONS

The California Air Resources Board (CARB) and AGCO are pleased to explain the **emission control system** warranty Model Year 2014 through 2015 off-road diesel engines. In California, new heavy-duty off-road engines must be designed, built, and equipped to meet the State's stringent anti-smog standards. AGCO must warrant the emission control system on your engine for the periods of time listed below provided there has been no abuse, neglect or improper maintenance of your engine.

Your emission control system may include parts such as the fuel-injection system and the air induction system. Also included may be hoses, belts, connectors and other emission-related assemblies.

Where a warrantable condition exists, AGCO will repair your heavy-duty off-road engine at no cost to you including diagnosis, parts, and labor.

MANUFACTURER'S WARRANTY COVERAGE:

The emission related devices on your Model Year 2014 through 2015 heavy-duty off-road engines are warranted for five (5) years or 3000 hours of operation for all engines 19KW or greater, whichever occurs first from the date of delivery of the engine to the initial purchaser.

If any emission-related part on your engine is defective, the part will be repaired or replaced by AGCO within the warranty period.

A) General Emissions Warranty Coverage

AGCO warrants to the ultimate purchaser and each subsequent purchaser of each off-road compression-ignition engine that the engine is:

- (1) Designed, built, and equipped so as to conform with all applicable regulations adopted by the Air Resources Board pursuant to its authority in Chapters 1 and 2, Part 5, Division 26 of the Health and Safety Code; and
- (2) Free from defects in materials and workmanship which cause the failure of a warranted part to be identical in all material respects to the part as described in the engine manufacturer's application for certification for a period of five years or 3,000 hours of operation, whichever occurs first, for all engines rated at 19KW and greater, except as noted below. In the absence of a device to measure hours of use, the engine shall be warranted for a period of five years.

B) Warranty on emissions-related parts shall be interpreted as follows:

- (1) Any warranted part which is not scheduled for replacement as required maintenance shall be warranted for the warranty period defined in Subsection (A)(2). If any such part fails during the period of warranty coverage, it shall be repaired or replaced by the engine manufacturer according to Subsection (4) below. Any such part repaired or replaced under the warranty shall be warranted for the remaining warranty period.
- (2) Any warranted part which is scheduled only for regular inspection shall be warranted for the warranty period defined in Subsection A)(2). A statement in such written instructions to the effect of "repair or replace as necessary" shall not reduce the period of warranty coverage. Any such part repaired or replaced under warranty shall be warranted for the remaining warranty period.
- (3) Any warranted part which is scheduled for replacement as required maintenance shall be warranted for the period of time prior to the first scheduled replacement point for that part. If the part fails prior to the first scheduled replacement, the part shall be repaired or replaced by the engine manufacturer according to Subsection (4) below. Any such part repaired or replaced under warranty shall be warranted for the remainder of the period prior to the first scheduled replacement point for the part.
- (4) Repair or replacement of any warranted part under the warranty provisions of this article shall be performed at no charge to the owner at a warranty station.
- (5) Notwithstanding the provisions of Subsection (4) above, warranty services or repairs shall be provided at all manufacturer distribution centers that are franchised to service the subject engines.
- (6) The owner shall not be charged for diagnostic labor that leads to the determination that a warranted part is in fact defective, provided that such diagnostic work is performed at a warranty station.
- (7) The engine manufacturer shall be liable for damages to other engine components proximately caused by a failure under warranty of any warranted part.
- (8) Throughout the engine's warranty period defined in Subsection (A)(2), the engine manufacturer shall maintain a supply of warranted parts sufficient to meet the expected demand for such parts.
- (9) Any replacement part, as defined in Section 1900(b)(13), Title 13, may be used in the performance of any maintenance or repairs and must be provided without charge to the owner. It is not necessary for replacement parts to be the same brand or by the same manufacturer as the original part sold with the engine. Such use shall not reduce the warranty obligations of the engine manufacturer.
- (10) Add-on or modified parts, as defined in Section 1900(b)(1) and (b)(10), Title 13, that are not exempted by the Air Resources Board may not be used. The use of any non-exempted add-on or modified parts shall be grounds for disallowing a warranty claim made in accordance with this article. The engine manufacturer shall not be liable under this article to warrant failures of warranted parts caused by the use of a non-exempted add-on or modified part.

GENERAL INFORMATION

CALIFORNIA EMISSION CONTROL WARRANTY STATEMENT

YOUR WARRANTY RIGHTS AND OBLIGATIONS

(11) The Executive Officer may request and, in such case, the engine manufacturer shall provide, any documents which describe that manufacturer's warranty procedures or policies.

C) Each manufacturer shall include a copy of the following emission warranty parts list with each new engine, using those portions of the list applicable to the engine.

- (1) Fuel Metering System
 - (A) Fuel injection system
 - (B) Air/fuel ratio feedback and control system.
 - (C) Cold start enrichment system.
- (2) Air Induction System
 - (A) Controlled hot air intake system.
 - (B) Intake manifold.
 - (C) Turbocharger/Supercharger Systems.
 - (D) Charge Air Cooling Systems.
- (3) Catalyst or Thermal Reactor System
 - (A) Catalytic converter.
 - (B) Diesel Oxidation Catalyst (DOC)
 - (C) Exhaust manifold
- (4) Particulate Controls
 - (A) Smoke Puff Limiters.
- (5) Advanced Oxides of Nitrogen (NOx) Controls
 - (A) NOx Absorbers
 - (B) Selective Catalyst Reduction (SCR)
 - (C) Reductant (urea/fuel) containers/dispensing systems
 - (D) Exhaust Gas Recirculation System (EGR)
- (6) Positive Crankcase Ventilation (PCV) System.
 - (A) PCV Valve.
 - (B) Oil Filler Cap.
- (7) Miscellaneous items Used in Above Systems
 - (A) Vacuum, temperature, and time sensitive valves and switches.
 - (B) Electronic control units, sensors, solenoids, and wiring harnesses.
 - (C) Hoses, belts, connectors, assemblies, clamps, fittings, tubing, sealing gaskets or devices, and mounting hardware.
 - (D) Pulleys, belts and idlers.
 - (E) Emission Control Information Labels
 - (F) Any other part with the primary purpose of reducing emissions or that can increase emissions during failure without significantly degrading engine performance.

OWNER'S WARRANTY RESPONSIBILITIES:

As the heavy-duty off-road engine owner, you are responsible for the performance of the **required maintenance listed in your owner's manual**.

AGCO recommends that you retain all receipts covering maintenance on your heavy-duty off-road engine, but AGCO cannot deny warranty solely for the lack of receipts or for your failure to ensure the performance of all scheduled maintenance.

As the heavy-duty off-road engine owner, you should however be aware that AGCO may deny you warranty coverage if your heavy-duty off-road engine or a part has failed due to abuse, neglect, improper maintenance or unapproved modifications.

Your engine is designed to operate on diesel fuel only. Use of any other fuel may result in your engine no longer operating in compliance with California's emissions requirements.

You are responsible for initiating the warranty process. The ARB suggests that you present your heavy-duty off-road engine to an AGCO dealer as soon as a problem exists. The warranty repairs should be completed by the dealer as expeditiously as possible.

CALIFORNIA EMISSION CONTROL WARRANTY STATEMENT

YOUR WARRANTY RIGHTS AND OBLIGATIONS

EMISSION WARRANTY EXCLUSIONS

This warranty shall not cover any of the following:

- Conditions resulting from tampering, misuse, abuse, improper adjustment, engine alteration, use of modified parts, use of replacement parts that are not the same in performance and durability as genuine replacement parts, failure to use the recommended fuel or oil, use of unapproved fuel or oil additives, or failure to perform required maintenance.
- Consequential damages such as loss of time, inconvenience, or loss of use of this engine or equipment.
- Damages or repair costs caused by the owner's unreasonable delay in making the engine available for warranty inspection and repair.
- Repairs not covered by this warranty, and diagnosis or inspection fees that do not result in eligible warranty service being performed.
- Any replacement with non-genuine parts or malfunction of genuine parts due to use of non-approved parts.
- The use of any non-exempted add-on or modified parts shall be grounds for disallowing a warranty claim.
- Travel Time and Mileage
- Freight
- Unless mandated by State or Provincial laws.

OBTAINING WARRANTY SERVICE

To obtain warranty service, owner should take the engine to the nearest Dealer or service center authorized by AGCO or the equipment manufacturer. If available, the original purchase receipt (showing the initial date of purchase) and all available maintenance records should be presented.

The authorized AGCO dealer will contact AGCO Warranty Department for confirmation of coverage.

The authorized Dealer or service center may perform the necessary repairs or adjustments within a reasonable time and furnish owner with a copy of the repair order. AGCO wants to assist in providing the services applicable under this warranty. If you need assistance in locating the nearest authorized Dealer or service center, or have any questions about your warranty rights and responsibilities, you should contact AGCO Answers at **1-877-525-4384** or email agcoanswers@agcocorp.com

UNITED STATES AND CANADA EMISSION CONTROL WARRANTY STATEMENT

APPLICABILITY

This section shall apply to new 1996-1999 model year and heavy duty off road compression-ignition engines and new 2000 and later model year compression-ignition engines. The warranty period shall begin on the date the engine or equipment is delivered to an ultimate purchaser. The use of alternative fuels shall not void the warranties on any engine certified to use such fuel.

WARRANTY STATEMENT

AGCO warrants to the ultimate purchaser and each subsequent owner that the compression-ignition engine and emission related parts in this equipment are designed, built, and equipped so as to conform with all applicable regulations adopted by the Air Resources Board (ARB) pursuant to its authority in Chapters 1 and 2, Part 5, Division 26 of the Health and Safety Code provided there has been no abuse, neglect, or improper maintenance of the engine. AGCO also warrants to the ultimate purchaser and each subsequent owner that the compression-ignition engine and emission related parts in the equipment are designed, built, and equipped so as to conform with all applicable regulations adopted by the US Environmental Protection Agency, pursuant to its authority under the Federal Clean Air Act provided there has been no abuse, neglect, or improper maintenance of the engine. This warranty is effective in all states of the U.S.A. and all provinces and territories of Canada.

WARRANTY PERIOD

The warranty period for this engine's emission related parts to be free from defects in materials and workmanship which cause the failure of a warranted part to be identical in all material respects to the parts as described in the engine manufacturer's application for certification begins on the date the engine or equipment is delivered to an ultimate purchaser and continues for a period of five (5) years or 3,000 hours for 19 to 560 kW emission related parts except as noted below. In the absence of a device to measure hours of use, the engine emissions related parts shall be warranted for a period of five (5) years.

For all engines rated less than 19kW, and for constant-speed engines rated under 37kW with rated speeds higher than or equal to 3000rpm, the period of two (2) years or 1,500 hours of operation, whichever occurs first. In the absence of a device to measure hours of use, the engine shall be warranted for a period of two years. If any emission related part on your engine fails within the warranty period, the part will be repaired or replaced by AGCO.

AGCO'S WARRANTY RESPONSIBILITY

Listed below are the parts covered by this warranty. Any part listed below that is subject to scheduled maintenance during the warranty period is warranted up to the first scheduled replacement point for that part. A part repaired or replaced under this warranty is warranted for the remainder of the warranty period. Parts replaced under this warranty become the property of the manufacturer. The warranted parts could include:

POWER RANGE	WARRANTY TERM	COVERED COMPONENTS
Below or equal to 19kw	2 years or 1,500 hours	Rubber Flanges, Fuel Injection Pump, Fuel Injectors, Intake Manifold, Exhaust Manifold, Nozzle Assembly, Turbo Charger (if applicable), Controlled Hot air Intake System. Miscellaneous Vacuum, temperature, and time sensitive valves and switches, Electronic control units, sensors, solenoids and wiring harnesses. Hoses, belts, connectors, assemblies, clamps, fitting, tubing, sealing , pulleys, belts and idlers, Emission Control Information Labels, Any other part with the primary purpose of reducing emissions or that can increase emissions during failure without significantly degrading engine performance.
19-37kw	5 years or 3,000 hours	Rubber Flanges, Fuel Injection Pump, Fuel Injectors, Intake Manifold, Exhaust Manifold, Nozzle Assembly, Turbo Charger (if applicable), Controlled Hot Air Intake system, Miscellaneous Vacuum, temperature, and time sensitive valves and switches, Electronic control units, sensors, solenoids, and wiring harnesses. Hoses, belts, connectors, assemblies, clamps, fitting, tubing, sealing , pulleys, belts and idlers, Emission Control Information Labels, Any other part with the primary purpose of reducing emissions or that can increase emissions during failure without significantly degrading engine performance.
37kw-Up	5 years or 3,000 hours	Fuel Injection Pump, Nozzle Assembly, Injection Pipe, Connector of Fuel Line, Intake manifold, Fuel pipe Assembly, Inlet Pipe, Inlet Pipe band, air cleaner element, fuel filter element, turbocharger systems, exhaust manifold, hoses, clamps, connectors, and sealing gaskets of devices used in systems above, catalysts, Electronic control units and sensors**, cold start enrichment system, charge air cooling system, controlled hot air intake system, catalytic converter, exhaust manifold, regenerators, oxidizers, fuel additive devices, and any other device used to regenerate or aid in the regeneration of the particulate control device, smoke puff limiters, selective catalyst reduction, reductant (DEF) containers/dispensing systems, Miscellaneous Vacuum, temperature, and time sensitive valves and switches, solenoids, and wiring harnesses. Hoses, belts, connectors, assemblies, clamps, fitting, tubing, sealing, gaskets or devices and mounting hardware, pulleys, belts and idlers, Emission Control Information Labels, Any other part with the primary purpose of reducing emissions or that can increase emissions during failure without significantly degrading engine performance.

NOTE: Filters that are replaced as part of normal scheduled maintenance are NOT covered by emissions warranty. These parts are listed as, but not limited to, engine air filter, oil filter, fuel filter, DEF filters, etc.

**** SENSORS RELATING TO EMISSION COMPONENTS ONLY**

Repair or replacement of any warranted part under the warranty provisions of this statement shall be performed at no charge to the owner at an authorized warranty station.

The owner shall not be charged for diagnostic labor that leads to the determination that a warranted part is in fact defective, provided that such diagnostic work is performed at an authorized warranty station.

Thank you very much for your reading. Please Click Here. Then Get COMPLETE MANUAL. NO WAITING



NOTE:

If there is no response to click on the link above, please download the PDF document first and then click on it.

GENERAL INFORMATION

OWNER MAINTENANCE AND REPAIR RESPONSIBILITY

The engine owner is responsible for the proper use and maintenance of the engine, as specified in the Operator's Manual. AGCO reserves the right to deny coverage under this warranty if the owner has not properly maintained the engine and/or emission related parts and failure occurs due to neglect, abuse, and/or unapproved modifications.

AGCO is not responsible for resultant damage to an emission-related part or component resulting from:

- Any application or installation AGCO deems improper
- Attachments, accessory items or parts not sold nor approved by AGCO.
- Improper engine maintenance, repair or abuse
- Owner's unreasonable delay in making the product available after being notified of a potential product problem.

AGCO shall be liable for damages to other engine components proximately caused by a failure under warranty of any warranted part.

This warranty is in addition to AGCO Standard Warranty.

AGCO recommends that the original owner keep the original purchase receipt (with the date of initial purchase), and all repair receipts and maintenance records, and transfer them to any subsequent owner.

However, AGCO will not deny warranty claims solely for the lack of receipts or failure to document the performance of all scheduled maintenance. The engine owner is responsible for presenting the engine to the nearest Dealer or service station authorized by AGCO when a problem exists.

Subject to the limitations above, non-warranty maintenance or repair of emission control parts on this engine may be performed by the owner, or by any repair establishment or individual, without affecting coverage under this warranty; however, reimbursable warranty repairs must be performed by a dealer or service center authorized by AGCO or the manufacturer of this equipment.

The use of parts that are not equivalent in performance and durability to genuine parts may impair the effectiveness of the emission control system and prevent coverage under this warranty. If non-genuine AGCO parts are used for maintenance or replacement on this engine, you should assure yourself that such parts are warranted by their manufacturer to be equivalent to genuine parts in performance and durability.

EMISSION WARRANTY EXCLUSIONS

This warranty shall not cover any of the following:

- Conditions resulting from tampering, misuse, abuse, improper adjustment, engine alteration, use of modified parts, use of replacement parts that are not the same in performance and durability as genuine replacement parts, failure to use the recommended fuel or oil, use of unapproved fuel or oil additives, or failure to perform required maintenance.
- Consequential damages such as loss of time, inconvenience, or loss of use of this engine or equipment.
- Damages or repair costs caused by the owner's unreasonable delay in making the engine available for warranty inspection and repair.
- Repairs not covered by this warranty, and diagnosis or inspection fees that do not result in eligible warranty service being performed.

- Any replacement with non-genuine parts or malfunction of genuine parts due to use of non-approved parts

The use of any non-exempted add-on or modified parts shall be grounds for disallowing a warranty claim.

- Travel Time and Mileage *
- Freight *

* Unless mandated by State or Provincial laws.

OBTAINING WARRANTY SERVICE

All repairs qualifying under this limited warranty must be performed by a Dealer or service center authorized by AGCO or the manufacturer of this equipment.

To obtain warranty service, owner should take the engine to the nearest Dealer or service center authorized by AGCO or the equipment manufacturer. If available, the original purchase receipt (showing the initial date of purchase) and all available maintenance records should be presented. The authorized AGCO dealer will contact AGCO Warranty Department for confirmation of coverage.

The authorized Dealer or service center may perform the necessary repairs or adjustments within a reasonable time and furnish owner with a copy of the repair order. AGCO wants to assist in providing the services applicable under this warranty. If you need assistance in locating the nearest authorized Dealer or service center, or have any questions about this warranty, you may contact an AGCO Warranty representative at:

AGCO Corporation
Technical Services and Support
P.O. Box 4300
Hesston, KS 67062-2002
678-534-3199

GENERAL INFORMATION
