

1A2

4630 TRACTOR

RWP4097 -UN-01JAN94



JOHN DEERE 4630 TRACTOR

(SPECIFICATIONS AND DESIGN SUBJECT TO CHANGE WITHOUT NOTICE)

COPYRIGHT (C) 1996. DEERE & COMPANY. MOLINE, ILLINOIS. ALL RIGHTS RESERVED.

1A3

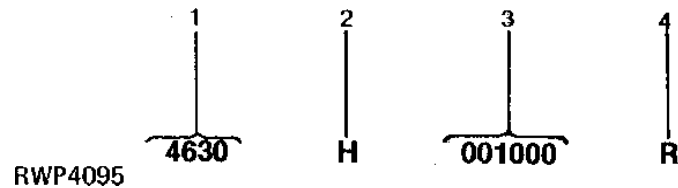
4630 TRACTOR

SERIAL NUMBERS

EACH 4630 TRACTOR HAS THE FOLLOWING SERIAL NUMBER PLATES: BASIC TRACTOR, ENGINE, SHORT BLOCK, ROLL-GARD, AND SOUND-GARD BODY.

TRACTOR SERIAL NUMBER

RWP4095 -UN-01JAN94



1. DESIGNATES TRACTOR MODEL
2. DESIGNATES TRANSMISSION TYPE

4630
H - QUAD-RANGE
P - POWER SHIFT
W - SYNCRO-RANGE

3. DESIGNATES TRACTOR SERIAL NUMBER
4. DESIGNATES TRACTOR MANUFACTURER

R - JOHN DEERE TRACTOR WORKS

RWP3900 -UN-01JAN94



THE BASIC TRACTOR SERIAL NUMBER PLATE IS LOCATED AT THE REAR OF THE TRANSMISSION CASE.

1A4

4630 TRACTOR

ENGINE SERIAL NUMBER

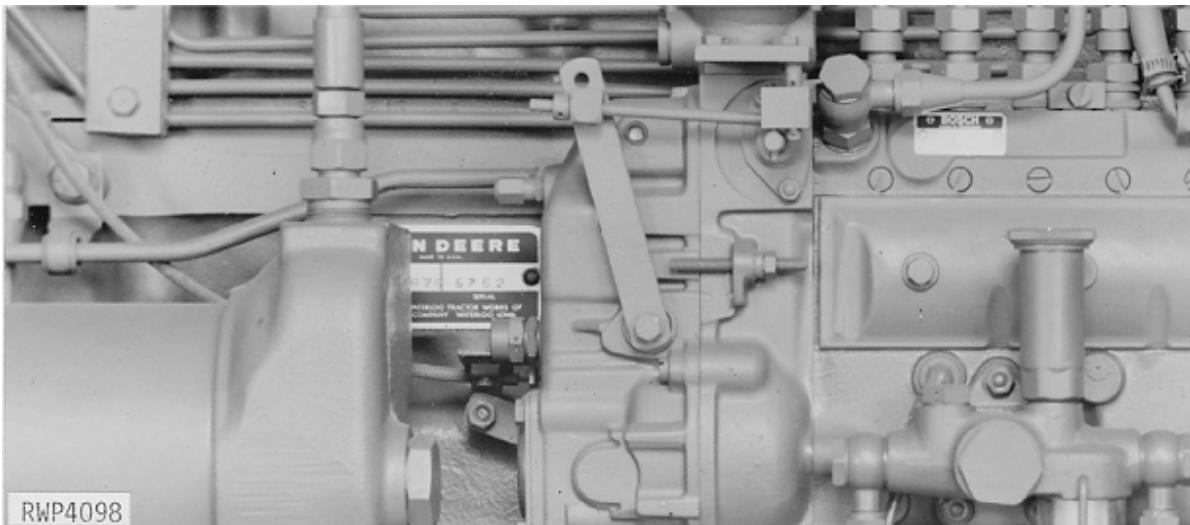
RWP4096 -UN-01JAN94

1 2 3 4 5 6 7
6 404 A R- 10 000000 R

RWP4096

- | | |
|---|----------------------------------|
| 1. DESIGNATES NUMBER OF CYLINDERS | 6 |
| 2. DESIGNATES CUBIC INCH DISPLACEMENT | 404 |
| 3. DESIGNATES TYPE OF AIR INTAKE SYSTEM | A - TURBOCHARGED AND INTERCOOLED |
| 4. DESIGNATES FACTORY USER | R - JOHN DEERE TRACTOR WORKS |
| 5. DESIGNATES VERSION | 10 - TENTH |
| 6. DESIGNATES ENGINE SERIAL NUMBER | 000000 |
| 7. DESIGNATES ENGINE MANUFACTURER | R - JOHN DEERE TRACTOR WORKS |

RWP4098 -UN-01JAN94



THE ENGINE SERIAL NUMBER PLATE IS LOCATED ON THE RIGHT-HAND SIDE OF THE ENGINE BEHIND THE INJECTION PUMP.

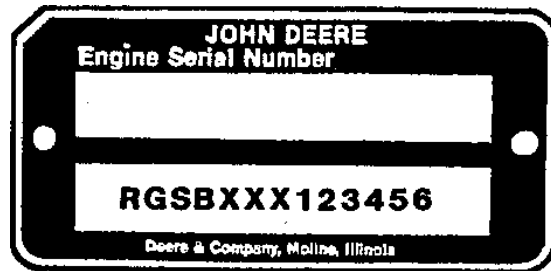
1A5

4630 TRACTOR

SHORT BLOCK SERIAL NUMBER PLATE

(S.B.S.N. -RGSB404882600)

RGP2856 -UN-01JAN94



RGP2856

A SHORT BLOCK SERIAL NUMBER PLATE PLUS 2-37H44 DRIVE SCREWS ARE USED TO ATTACH TO REPLACEMENT SHORT BLOCK ASSEMBLIES. THIS NUMBER WILL BE REFERRED TO WHEN NEW PARTS AFFECT THE SHORT BLOCK ASSEMBLY. THE PREVIOUS ENGINE SERIAL NUMBER SHOULD BE STAMPED INTO THE BLANK SPACE PROVIDED, AS A REFERENCE FOR YOUR DEALER.

- | | |
|---------------------------------------|----------------------------|
| 1. DESIGNATES ENGINE MANUFACTURER | RG - WATERLOO ENGINE WORKS |
| 2. DESIGNATES REPLACEMENT SHORT BLOCK | SB |
| 3. DESIGNATES CUBIC INCH | XXX- 404 |
| 4. DESIGNATES THE PRODUCTION DATE | 1234 |
| 5. DESIGNATES COMPONENT SEQUENCE | 56 |

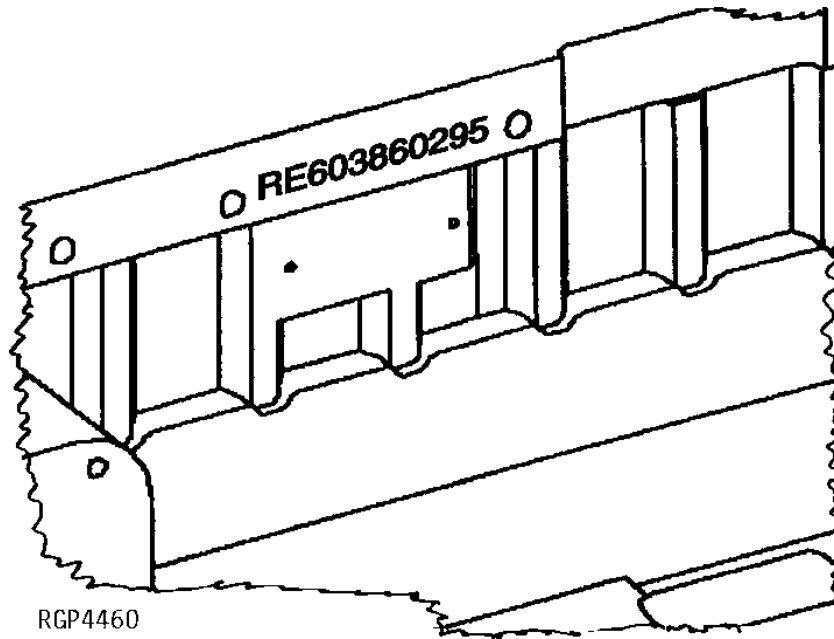
1A6

4630 TRACTOR

SHORT BLOCK SERIAL NUMBER IDENTIFICATION

(RE603860295-) (EXAMPLE ONLY)

RGP4460 -UN-04MAR95



SERIAL NUMBER STAMPED INTO CASTING OF BLOCK NEAR PREVIOUS SERIAL NUMBER PLATE.

EXAMPLE: RE603860295

- | | |
|-----------------------------------|---------|
| 1. DESIGNATES SERVICE PART NUMBER | RE60386 |
| 2. DESIGNATES MONTH ASSEMBLED | 02 |
| 3. DESIGNATES YEAR ASSEMBLED | 95 |

1A7

4630 TRACTOR

SOUND-GARD BODY OR ROLL-GARD SERIAL NUMBER

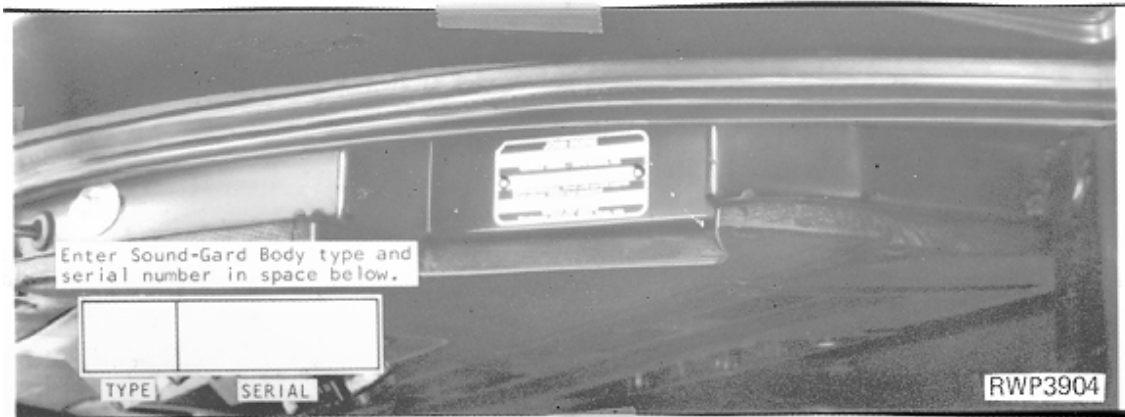
RWP3903 -UN-01JAN94



RWP3903

1. DESIGNATES TYPE
SG - SOUND-GARD BODY
RG - ROLL-GARD
2. DESIGNATES VERSION
1 - FIRST
3. DESIGNATES SERIAL NUMBER
4. DESIGNATES SOUND-GARD BODY MANUFACTURER - JOHN DEERE TRACTOR WORKS

RWP3904 -UN-01JAN94



THE SOUND-GARD BODY SERIAL NUMBER PLATE IS LOCATED ON THE WINDSHIELD WIPER MOTOR ACCESS DOOR HEADER.

THE ROLL-GARD SERIAL NUMBER IS STAMPED ON A PLATE LOCATED ON THE RIGHT-HAND FRONT POST.

1A8

4630 TRACTOR

SERIAL NUMBER LISTING INFORMATION

SERIAL NUMBER INFORMATION IS LISTED TO SHOW ON WHICH MACHINES EACH PART CAN BE USED; FOR EXAMPLE:

- THE PART CAN BE USED ON ALL MACHINES.
- 000000- THE PART CAN BE USED ON ALL MACHINES BEGINNING WITH THE SERIAL NUMBER LISTED.
- 000000 THE PART CAN BE USED ON ALL MACHINES UP TO AND INCLUDING THE SERIAL NUMBER LISTED.
- 000000-000000 THE PART CAN BE USED ON ALL MACHINES BETWEEN AND INCLUDING THE SERIAL NUMBERS LISTED.

- 15BV1- WHEN A MODEL NUMBER BEGINS WITH 15BV, 14HA, 15PP, 25SC, 2RC, 4RC, 15RS, 3CY, 2SP, OR 31SV, IT REFERS TO THE MODEL NUMBER OF THE BRAKE VALVE, HYDRAULIC ACCUMULATOR, HYDRAULIC PUMP, REMOTE CYLINDER SELECTIVE CONTROL VALVE FOR NO ROCKSHAFT, REMOTE CYLINDER SELECTIVE CONTROL VALVES, REMOTE CYLINDERS, REMOTE CYLINDERS WITH MECHANICAL STOPS, ROCKSHAFT CONTROL VALVE, STEERING CYLINDER, STEERING METERING PUMP, OR STEERING VALVE.

WHEN XXXXXX'S ARE LISTED IN PLACE OF A SERIAL NUMBER, A SERIAL NUMBER CHANGE WAS MADE BUT THE EXACT SERIAL NUMBER WAS NOT AVAILABLE WHEN THE CATALOG WAS PRODUCED.

MODEL NUMBERS

THE FOLLOWING COMPONENTS HAVE MODEL NUMBERS:

ACCUMULATOR	14HA1
BRAKE VALVE	12BV1
DIFFERENTIAL LOCK VALVE	11DL1
HYDRAULIC ACCUMULATOR	14HA1
HYDRAULIC PUMP (50 CM3) (3 IN3)	1PPA
HYDRAULIC PUMP (65 CM3) (4 IN3)	8PP4
POWER WEIGHT TRANSFER CONTROL VALVE	1DC2
REMOTE CYLINDER SELECTIVE CONTROL VALVE - SINGLE	23SC1
REMOTE CYLINDER SELECTIVE CONTROL VALVE - DUAL	23SC2
REMOTE CYLINDER SELECTIVE CONTROL VALVE - TRIPLE	24SC1
REMOTE CYLINDER (76 X 203MM (3" X 8"))	1RC3
REMOTE CYLINDER WITH MECHANICAL STOP (76 X 203MM (3" X 8"))	3RC2
ROCKSHAFT CONTROL VALVE	10RS1
STEERING CYLINDER	3CY1
STEERING METERING PUMP	2SP1
STEERING VALVE	14SV1

EACH OF THE ABOVE COMPONENTS HAS A MODEL NUMBER. WHEN THE DESIGN OF ONE OF THESE COMPONENTS IS CHANGED, THE MODEL NUMBER FOR THE NEWLY DESIGNED COMPONENT IS CHANGED.

1A9

4630 TRACTOR

DIRECTION ARROW

ARROWS ARE USED WITH ILLUSTRATIONS TO INDICATE THE FRONT OF THE UNIT. "RIGHT-HAND" AND "LEFT-HAND" SIDES ARE DETERMINED BY FACING IN THE DIRECTION OF MACHINE FORWARD TRAVEL.

BOX-ENCLOSED ILLUSTRATIONS

A KEY NUMBER, SHOWN IN THE PARTS LIST, IS ASSIGNED TO A BOX ENCLOSING ALL PARTS SOLD AS A SERVICE ASSEMBLY.

BOLT AND CAP SCREW STRENGTH IDENTIFICATION

U.S. CUSTOMARY DIMENSIONED PRODUCT: BOLTS AND CAP SCREWS REQUIRED TO HAVE HIGH-STRENGTH QUALITIES EQUIVALENT TO SAE GRADE 8 ARE IDENTIFIED THROUGHOUT THIS CATALOG BY THE DESCRIPTION HS SAE 8. ALL STANDARD BOLTS AND CAP SCREWS ARE SAE GRADE 5 OR LOWER.

METRIC DIMENSIONED PRODUCT: BOLTS AND CAP SCREWS REQUIRED TO HAVE HIGH-STRENGTH QUALITIES EQUIVALENT TO PROPERTY CLASS 10.9 ARE IDENTIFIED THROUGHOUT THIS CATALOG BY THE DESCRIPTION HS 10.9. ALL STANDARD BOLTS AND CAP SCREWS ARE PROPERTY CLASS 8.8 OR LOWER.

JDM REMANUFACTURED COMPONENTS

THE SERVICE PARTS LISTED IN THIS CATALOG ARE INTENDED FOR THE REPAIR OF ORIGINAL EQUIPMENT COMPONENTS. ALTHOUGH MOST SERVICE PARTS MAY BE USED TO REPAIR REMANUFACTURED COMPONENTS, THE REMANUFACTURING PROCESS MAY CHANGE PARTS SUFFICIENTLY SO THAT SERVICE PARTS ARE INADEQUATE OR NOT USABLE.

TRADEMARKS

THROUGHOUT THIS PARTS CATALOG, YOU WILL FIND THE FOLLOWING DEERE AND COMPANY TRADEMARKS:

HYDRACUSHIONED™
INVESTIGATOR™ II
PERSONAL-POSTURE™
QUAD-RANGE™
PERFORMANCE TRAK™ I
PERFORMANCE TRAK™ II

ROLL-GARD®
SOUND-GARD®
TORQ-GARD SUPREME®
HY-GARD®
QUIK-TATCH®

CHANGE INDICATOR LINE (MICROFICHE CATALOGS ONLY)

CHANGES AFFECTING THE ORDERING OF PARTS ARE IDENTIFIED BY VERTICAL LINES MARKED IN THE LEFT-HAND MARGIN OF REVISED PARTS LISTING IMAGES. A LINE IS ALSO AT THE LEFT-HAND EDGE OF THE SAME PART NUMBER IN THE NUMERICAL INDEX TO SHOW THE LOCATION OF REVISED INFORMATION.

1A10

4630 TRACTOR

QUANTITY COLUMN OR REMARKS COLUMN

GENERALLY THE QUANTITY SHOWN IS FOR THE ENTIRE TRACTOR AT ANY GIVEN LOCATION. THERE ARE EXCEPTIONS AS IN WHEEL HARDWARE WHERE ONLY ENOUGH IS SHOWN FOR ONE WHEEL.

THE FOLLOWING ABBREVIATIONS ARE USED IN THE REMARKS COLUMN:

NLR - NO LONGER REQUIRED

NA - NOT APPLICABLE

NLA - NO LONGER AVAILABLE

FI - FIELD INSTALLED

CA - CONVENIENCE ASSEMBLY

CA AND FI ARE OPTIONS THAT MUST BE ORDERED DIRECT FROM THE PRODUCING FACTORY.

1A11

4630 TRACTOR

SECTION INDEX

GENERAL INFORMATION	10
ENGINE	20
FUEL AND AIR	30
ELECTRICAL	40
POWER TRAIN	50
STEERING AND BRAKES	60
HYDRAULICS	70
WHEELS, FRONT AXLES, SHEET METAL	80
OPERATOR'S STATION	90
NUMERICAL INDEX	95

1A12

4630 TRACTOR

ALPHABETICAL INDEX

GRID		PAGE	GRID		PAGE
A					
5C19	ABSORBER, SHOCK, SEAT SUPPORT.....	90-38	2F16	ARM, WINDSHIELD WIPER	40-93E
5D3	ABSORBER, SHOCK, SEAT SUPPORT.....	90-48	2C23	ARMATURE, STARTER (DELCO-REMY)	40-40
3I15	ACCUMULATOR, BRAKE	60-46	2D5	ARMATURE, STARTER (JOHN DEERE) (DIESEL).....	40-45A
4D24	ADAPTER, IMPLEMENT QUICK COUPLER.....	70-70	5C24	ARMREST (PERSONAL-POSTURE SEAT)	90-44
5F17	ADHESIVE	90-113	1B12	ARMS, ROCKER	20-10
4G22	ADJUSTABLE FRONT AXLE TIE RODS	80-6	3C16	ARMS, SHIFTER SHAFTS.....	50-34
1D12	AFTERCOOLER	30-8	3F1	ARMS, TRANSMISSION	50-96
1E1	AID, COLD WEATHER STARTING (ELECTRIC)	30-22	5F4	ASH TRAY, SOUND-GARD BODY	90-100
1D24	AID, COLD WEATHER STARTING (MANUAL)	30-20	5F5	ASH TRAY, SOUND-GARD BODY	90-101
5B20	AIR CIRCULATION PRESSURIZER BLOWER, SGB.....	90-14	3D18	ASSEMBLY, CLUTCH PACK AND OIL PUMP (PST)	50-64
5B22	AIR CIRCULATION PRESSURIZER BLOWER, SGB.....	90-16	1B23	ASSEMBLY, COMPLETE BLOCK	20-17E
1D8	AIR CLEANER	30-2	4C18	ATTENUATOR, HYDRAULIC OIL	70-36
1D7	AIR CLEANER ELEMENT CLEANING GUN.....	30-1	4F14	AUXILIARY HYDRAULIC OUTLET KIT.....	70-112
2B8	AIR COMPRESSOR WIRING	40-1	4G18	AXLE, ADJUSTABLE TREAD FRONT	80-1
5B8	AIR CONDITIONING COMPRESSOR	90-2	4G19	AXLE, ADJUSTABLE TREAD FRONT	80-2
4C8	AIR CONDITIONING CONDENSER	70-26	3F19	AXLE, REAR.....	50-118
5B12	AIR CONDITIONING EVAPORATOR	90-6	B		
5B10	AIR CONDITIONING LINES.....	90-4	5C16	BACK, SEAT.....	90-34
4G14	AIR CONDITIONING O-RING KIT.....	70-137	5D1	BACKREST, SEAT, SUPPORT	90-46
5B12	AIR CONDITIONING RECEIVER-DEHYDRATOR	90-6	1C21	BAFFLE KIT, RADIATOR.....	20-36
5B14	AIR CONDITIONING RETROFIT KIT	90-7A	4H24	BAFFLE, HOOD	80-32
5B10	AIR CONDITIONING THERMOSTAT	90-4	4H11	BAFFLES, FRAME	80-20
5B12	AIR CONDITIONING THERMOSTAT SWITCH.....	90-6	1E5	BASE, FUEL FILTER (EARLY DESIGN).....	30-26
5B7	AIR CONDITIONING, BELT, COMPRESSOR.....	90-1	1E6	BASE, FUEL FILTER (LATE DESIGN)	30-27
5B7	AIR CONDITIONING, COMPRESSOR MOUNTING	90-1	4H18	BATTERY BOX.....	80-26
1D10	AIR INTAKE	30-5	4H20	BATTERY BOX (RG AND SGB)	80-28
5B16	AIR LOUVER	90-9	2B16	BATTERY CABLES	40-8
5B16	AIR LOUVER PANEL.....	90-9	4H18	BATTERY CLAMPS	80-26
5B15	AIR LOUVER, SOUND-GARD BODY	90-8	4H20	BATTERY CLAMPS (RG AND SGB)	80-28
1D10	AIR STACK.....	30-5	2B17	BATTERY, STORAGE	40-9
1D10	AIR STACK KIT	30-5	1C9	BEARING KIT, UNDERSIZED MAIN BEARING CRANKSHAFT (EARLY DESIGN).....	20-25A
2C10	ALTERNATOR	40-26	1C10	BEARING KIT, UNDERSIZED MAIN BEARING CRANKSHAFT (LATE DESIGN)	20-25B
2C11	ALTERNATOR	40-27	1C11	BEARINGS, MAIN.....	20-26
2C12	ALTERNATOR (EARLY DESIGN)	40-28	1C11	BEARINGS, MAIN THRUST.....	20-26
2C12	ALTERNATOR BRUSHES (EARLY DESIGN).....	40-28	5B7	BELT, COMPRESSOR.....	90-1
2C12	ALTERNATOR FAN (EARLY DESIGN).....	40-28	2C10	BELT, FAN AND ALTERNATOR DRIVE.....	40-26
2C14	ALTERNATOR KIT	40-30	2C11	BELT, FAN AND ALTERNATOR DRIVE.....	40-27
2C10	ALTERNATOR MOUNTING BRACKETS	40-26	5C5	BELT, SEAL (W/O HI CROP)	90-23A
2C11	ALTERNATOR MOUNTING BRACKETS	40-27	5C21	BELT, SEAT (PERSONAL-POSTURE SEAT).....	90-40
2C14	ALTERNATOR PULLEY.....	40-30	1C25	BELTS, FAN	20-40
2C12	ALTERNATOR REGULATOR (EARLY DESIGN)	40-28	3C2	BEVEL GEAR, DIFFERENTIAL (QRT AND SRT)	50-21A
2E21	AM RADIO (MOTOROLA)	40-76	3F13	BEVEL PINION, DIFFERENTIAL	50-110
2E22	AM-FM RADIO (MOTOROLA)	40-77	3C2	BEVEL PINION, DIFFERENTIAL (QRT AND SRT)	50-21A
2E13	ANALOG TACHOMETER	40-69C	3E8	BEVEL, PINION, DIFFERENTIAL	50-79
1E22	ANEROID ACTIVATOR, HYDRAULIC.....	30-44	5B16	BEZEL, AIR LOUVER	90-9
1F1	ANEROID CONTROL	30-50	4I9	BI-LINGUAL DECAL SET.....	80-42
1F2	ANEROID CONTROL	30-51	2F14	BLADE, WINDSHIELD WIPER	40-93C
1F4	ANEROID CONTROL	30-53	2F16	BLADE, WINDSHIELD WIPER	40-93E
2E24	ANTENNA BRACKET, CB RADIO.....	40-79	1B23	BLOCK ASSEMBLY, COMPLETE	20-17E
2F5	ANTENNA KIT, RADIO.....	40-86	1B15	BLOCK, CYLINDER	20-14
2F4	ANTENNA, FENDER MOUNTED, KIT	40-85	1B17	BLOCK, ENGINE SHORT (WITH OIL PUMP)	20-16
2F2	ANTENNA, RADIO KIT.....	40-82	1B19	BLOCK, ENGINE SHORT (WITHOUT OIL PUMP)	20-17A
3D14	ARM CLUTCH VALVE OPERATING (PST)	50-60	3G3	BLOCK, FRONT WHEEL DRIVE CYLINDER	50-128
4C24	ARM, LIFT.....	70-42	4E4	BLOCK, SWAY CONTROL	70-76
4D5	ARM, LOAD CONTROL	70-49	3C4	BLOCKER, TRANSMISSION (QRT AND SRT).....	50-22
4F19	ARM, REMOTE CYLINDER TRANSPORT	70-118	5B24	BLOWER FILTER CAPACITOR KIT	90-18
4C24	ARM, ROCKSHAFT CRANK	70-42	5B25	BLOWER MOTOR RESISTOR	90-19
3D1	ARM, SHIFTER.....	50-46	5B16	BLOWER SWITCH.....	90-9
3C15	ARM, SPEED CHANGE SHIFTER	50-33	5B18	BLOWER, PRESSURIZER.....	90-12
3C13	ARM, SPEED RANGE SHIFTER.....	50-31			
3C14	ARM, SPEED RANGE SHIFTER.....	50-32			
4G22	ARM, STEERING	80-6			
4G24	ARM, STEERING	80-8			
4G24	ARM, STEERING MOTOR SPINDLE	80-8			
2F14	ARM, WINDSHIELD WIPER	40-93C			

1A13

4630 TRACTOR

ALPHABETICAL INDEX - CONTINUED

<i>GRID</i>		<i>PAGE</i>	<i>GRID</i>		<i>PAGE</i>
5B20	BLOWER, PRESSURIZER, SGB.....	90-14	5F12	CABLE, SPEED-HOUR METER	90-108
5B22	BLOWER, PRESSURIZER, SOUND-GARD BODY	90-16	3E14	CABLES, TRANSMISSION CONTROL	50-86
5D9	BODY, REPLACEMENT SOUND-GARD.....	90-54	1B13	CAMSHAFT.....	20-11
1B9	BOLTS, HEAD	20-6	1B13	CAMSHAFT BUSHING.....	20-11
5F9	BOOT, SHIFTER ROD.....	90-105	1B13	CAMSHAFT, GEAR	20-11
4H18	BOX, BATTERY	80-26	5C12	CANOPY, ROLL-GARD, FOUR-POST	90-30
4H20	BOX, BATTERY (RG AND SGB).....	80-28	5C7	CANOPY, ROLL-GARD, TWO-POST	90-24
5F18	BOX, TOOL.....	90-114	3H10	CAP PLUG ASSORTMENT KIT	60-14
5D23	BRACKET KIT, CONTROL SUPPORT	90-68	3I6	CAP PLUG ASSORTMENT KIT	60-36
2E24	BRACKET, CB RADIO ANTENNA.....	40-79	1D23	CAP, EXHAUST	30-19
2E24	BRACKET, CB RADIO MOUNTING	40-79	1E3	CAP, FUEL FILLER	30-24
5F8	BRACKET, FIRE EXTINGUISHER.....	90-104	1C19	CAP, RADIATOR	20-34
4H17	BRACKET, FRONT FENDER.....	80-25A	5B22	CAPACITOR, BLOWER MOTOR FILTER.....	90-16
5E5	BRACKET, SOUND-GARD BODY ROOF	90-74	2C1	CAPACITOR, NOISE SUPPRESSION	40-17
2F14	BRACKET, WINDSHIELD WIPER	40-93C	2B20	CAPACITOR, RADIO NOISE SUPPRESSION	40-12
2F16	BRACKET, WINDSHIELD WIPER	40-93E	2B22	CAPACITOR, RADIO NOISE SUPPRESSION	40-14
2E11	BRACKET,RADAR SENSOR	40-69A	2C2	CAPACITOR, RADIO NOISE SUPPRESSOR.....	40-18
2D15	BRACKETS, LAMP.....	40-50	3G5	CARRIER, FIRST PLANET PINION (PFWD)	50-130
3I15	BRAKE ACCUMULATOR.....	60-46	3F19	CARRIER, PLANET PINION	50-118
3I5	BRAKE FACING	60-35	3C6	CARRIER, PLANET PINION (QUAD-RANGE)	50-24
3I4	BRAKE FACINGS.....	60-34	3D24	CASE, TRANSMISSION (POWER SHIFT)	50-70
3I6	BRAKE OIL LINES (REAR)	60-36	3B23	CASE, TRANSMISSION (QRT AND SRT)	50-18
3I8	BRAKE OIL LINES (UPPER).....	60-38	4H4	CAST DISK WHEELS	80-13
3I13	BRAKE PEDALS.....	60-44	2E24	CB RADIO MOUNTING KIT.....	40-79
3C8	BRAKE PISTON (QUAD-RANGE)	50-26	1D17	CENTER HOUSING, TURBOCHARGER (AIRESEARCH)	30-13
3C10	BRAKE PISTON HOUSING (QRT)	50-28	1D19	CENTER HOUSING, TURBOCHARGER (EARLY DESIGN).....	30-15
3G6	BRAKE PISTON SEAL KIT, PFWD.....	50-131	1D21	CENTER HOUSING, TURBOCHARGER (LATE DESIGN).....	30-17
3I5	BRAKE PLATE	60-35	4D21	CENTER LINK	70-66
3I4	BRAKE PLATES.....	60-34	4D23	CHAIN, IMPLEMENT SAFETY	70-69
3I10	BRAKE VALVE	60-40	4I8	CHART, GROUND SPEED	80-40
3I12	BRAKE VALVE OVERHAUL KIT.....	60-42	2E7	CIGAR LIGHTER	40-66
3E6	BRAKE, PLANETARY (POWER SHIFT)	50-77	2C1	CIRCUIT BREAKER (LESS SGB).....	40-17
3E5	BRAKE, PLANETARY, FIRST (POWER SHIFT)	50-76	2B20	CIRCUIT BREAKER (SGB)	40-12
3E2	BRAKE, PLANETARY, FOURTH (POWER SHIFT)	50-73	2B22	CIRCUIT BREAKER (SGB)	40-14
3E4	BRAKE, PLANETARY, SECOND (POWER SHIFT)	50-75	2B24	CIRCUIT BREAKER SUPPORT KIT	40-15B
3E3	BRAKE, PLANETARY, THIRD (POWER SHIFT)	50-74	2G4	CIRCUIT BREAKER, ELECTRICAL OUTLET.....	40-104
4F2	BREAKAWAY COUPLER.....	70-99	2G8	CIRCUIT BREAKER, SUPPLEMENTARY WIRING	40-106
4F3	BREAKAWAY COUPLER	70-100	2C2	CIRCUIT BREAKERS AND RELAY (PFWD)	40-18
4F7	BREAKAWAY COUPLER (ISO CONVERSION KIT)	70-104	4H18	CLAMP, BATTERY.....	80-26
4F6	BREAKAWAY COUPLER (ISO).....	70-103	4H20	CLAMP, BATTERY (RG AND SGB)	80-28
4F5	BREAKAWAY COUPLER OVERHAUL KIT.....	70-102	4G13	CLEAN-UP KIT, HYDRAULIC OIL.....	70-136
2B22	BREAKER CIRCUIT (SGB)	40-14	1D8	CLEANER, AIR.....	30-2
2C1	BREAKER, CIRCUIT (LESS SGB)	40-17	4E12	CLEVIS PIN, DRAWBAR	70-84
2C2	BREAKER, CIRCUIT (PFWD)	40-18	3D18	CLUTCH ASSEMBLY (PST)	50-64
2B20	BREAKER, CIRCUIT (SGB)	40-12	3C2	CLUTCH COLLAR (QRT AND SRT).....	50-21A
2G1	BREAKER, CIRCUIT, REMOTE CONTROL	40-101	3E18	CLUTCH CONTROL, PTO (POWER SHIFT)	50-90
2G4	BREAKER, ELECTRICAL OUTLET CIRCUIT.....	40-104	3C22	CLUTCH CONTROL, TRANSMISSION	50-41
1B13	BUSHING, CAMSHAFT	20-11	3E11	CLUTCH CONTROL, TRANSMISSION DISCONNECT	50-82
2B20	BUSSBAR	40-12	3B11	CLUTCH DISK (QRT AND SRT).....	50-6
2B22	BUSSBAR	40-14	3D21	CLUTCH DRUM (FRONT)	50-68
2C1	BUSSBAR	40-17	3C10	CLUTCH DRUM (QRT)	50-28
2C2	BUSSBAR, CIRCUIT BREAKER (PFWD)	40-18	3C8	CLUTCH DRUM (QUAD-RANGE)	50-26
2E7	BUTTON, HORN.....	40-66	3D23	CLUTCH DRUM (REAR)	50-69
2C17	BYPASS STARTER LABEL	40-33	3D13	CLUTCH HOUSING (POWER SHIFT)	50-58
1C15	BYPASS VALVE, OIL COOLER	20-30	3B9	CLUTCH HOUSING (QRT AND SRT).....	50-3
2D4	BYPASS, STARTER LABEL	40-45	3B8	CLUTCH HOUSING (SYNCRO-RANGE).....	50-2
			3B22	CLUTCH LEVER LINKAGE, PTO (QRT AND SRT).....	50-17
			3B17	CLUTCH OIL PRESSURE REGULATING VALVE	50-12
			3D20	CLUTCH OIL PUMP ASSEMBLY	50-67
			3B10	CLUTCH PEDAL AND LINKAGE.....	50-4
			3D14	CLUTCH PEDAL AND LINKAGE (PST)	50-60
			3D16	CLUTCH SHAFT (POWER SHIFT)	50-62
			3D17	CLUTCH SHAFT (POWER SHIFT)	50-63
			3D19	CLUTCH SHAFT (POWER SHIFT)	50-66

C

5E9	CAB HEADLINERS.....	90-78
5B20	CAB PRESSURIZER BLOWER	90-14
5B22	CAB PRESSURIZER BLOWER	90-16
2B16	CABLE, BATTERY	40-8
1F1	CABLE, PUSH-PULL (FUEL SHUT-OFF)	30-50
1F2	CABLE, PUSH-PULL (FUEL SHUT-OFF)	30-51
1F3	CABLE, PUSH-PULL (FUEL SHUT-OFF)	30-52

1A14

4630 TRACTOR

ALPHABETICAL INDEX - CONTINUED

<i>GRID</i>		<i>PAGE</i>	<i>GRID</i>		<i>PAGE</i>
3D21	CLUTCH SHAFT (POWER SHIFT)	50-68	4C8	COOLER, HYDRAULIC OIL	70-26
3B15	CLUTCH SHAFT (QRT AND SRT)	50-10	5B16	COOLING TEMPERATURE SWITCH	90-9
3C6	CLUTCH SHAFT (QUAD-RANGE)	50-24	3C1	COUNTERSHAFT, TRANSMISSION	50-21
3B13	CLUTCH SHAFT (SYNCRO-RANGE)	50-8	4F9	COUPLER OVERHAUL KIT (ISO)	70-106
3B19	CLUTCH VALVE HOUSING (QRT AND SRT)	50-14	4F2	COUPLER, BREAKAWAY	70-99
3B19	CLUTCH VALVE SHIELD (QRT AND SRT)	50-14	4F3	COUPLER, BREAKAWAY	70-100
3C17	CLUTCH, CONTROL, TRANSMISSION	50-35	4F7	COUPLER, BREAKAWAY (ISO CONVERSION KIT)	70-104
3C19	CLUTCH, CONTROL, TRANSMISSION	50-37	4F6	COUPLER, BREAKAWAY (ISO)	70-103
3D19	CLUTCH, OIL MANIFOLD (POWER SHIFT)	50-66	4F12	COUPLER, FLEXIBLE OIL LINE	70-110
3D23	CLUTCH, PTO (POWER SHIFT)	50-69	4D24	COUPLER, IMPLEMENT QUICK	70-70
3B11	CLUTCH, PTO (QRT AND SRT)	50-6	4F7	COUPLER, ISO CONVERSION KIT	70-104
3C6	CLUTCH, QUAD-RANGE	50-24	4B7	COUPLER, MAIN PUMP DRIVE	70-1
3C7	CLUTCH, QUAD-RANGE (ASSEMBLED)	50-25	4E13	COUPLER, POWER WEIGHT TRANSFER	70-85
3D21	CLUTCH, TRANSMISSION, PACK	50-68	4G12	COUPLINGS, REUSABLE	70-135
3D23	CLUTCH, TRANSMISSION, PACK	50-69	3I13	COVER, BRAKE VALVE HOUSING	60-44
2D6	COIL, STARTER (JOHN DEERE) (DIESEL)	40-45B	3B11	COVER, CLUTCH (QRT AND SRT)	50-6
1E1	COLD WEATHER STARTING AID (ELECTRIC)	30-22	5F6	COVER, CONTROL SUPPORT	90-102
1D24	COLD WEATHER STARTING AID (MANUAL)	30-20	4E17	COVER, DUAL SELECTIVE CONTROL KIT	70-89
3C4	COLLAR, SYNCHRONIZER DISK (QRT AND SRT)	50-22	4F11	COVER, DUST (DIAGNOSTIC RECEPTACLE)	70-109
2D7	COMMUTATOR END FRAME, STARTER (JOHN DEERE) (DIESEL)	40-45C	4F2	COVER, DUST, BREAKAWAY COUPLER	70-99
1B23	COMPLETE BLOCK ASSEMBLY	20-17E	4F3	COVER, DUST, BREAKAWAY COUPLER	70-100
5B8	COMPRESSOR	90-2	4F12	COVER, DUST, BREAKAWAY COUPLER	70-110
5B8	COMPRESSOR CLUTCH	90-2	1D23	COVER, EXHAUST	30-19
5B8	COMPRESSOR COIL	90-2	5E1	COVER, PRESSURIZER	90-70
5B8	COMPRESSOR PULLEY	90-2	5E9	COVER, PRESSURIZER	90-78
5B8	COMPRESSOR SHAFT SEAL KIT	90-2	3F7	COVER, RETURN PORT	50-103
5B10	CONDENSER LINES	90-4	1B10	COVER, ROCKER ARM	20-8
5B11	CONDENSER LINES	90-5	4E17	COVER, ROCKSHAFT CONTROL VALVE HOUSING	70-89
4C8	CONDENSER, AIR CONDITIONING	70-26	4C20	COVER, ROCKSHAFT HOUSING	70-38
1B7	CONDITIONER, COOLANT	20-2	4C22	COVER, ROCKSHAFT HOUSING	70-40
1C3	CONNECTING RODS	20-21	4C25	COVER, ROCKSHAFT PISTON	70-43
1E15	CONNECTORS, FUEL INJECTION PUMP HOUSING	30-36	2D4	COVER, STARTER SOLENOID (JOHN DEERE)	40-45
2G10	CONNECTORS, ELECTRICAL	40-108	3H2	COVER, STEERING VALVE	60-5
2G12	CONNECTORS, ELECTRICAL	40-110	3G24	COVER, STEERING VALVE CYLINDER	60-2
2G14	CONNECTORS, ELECTRICAL	40-112	1C13	COVER, TIMING GEAR	20-28
2D24	CONSOLE LIGHT HOUSING, FOUR-POST ROLL-GA RD	40-59	3B24	COVER, TRANSMISSION CASE (FRONT)	50-19
2D24	CONSOLE LIGHT, FOUR-POST ROLL-GARD	40-59	3D25	COVER, TRANSMISSION CASE (FRONT)	50-71
5F10	CONSOLE, CONTROL	90-106	3F1	COVER, TRANSMISSION CONTROL VALVE	50-96
2G10	CONTAINER, ELECTRICAL PARTS	40-108	4D12	COVER, TRANSMISSION REAR	70-56
5F10	CONTROL CONSOLE	90-106	4D14	COVER, TRANSMISSION REAR	70-58
4D8	CONTROL LINKAGE, ROCKSHAFT	70-52	4E17	COVER, TRIPLE SELECTIVE CONTROL KIT	70-89
5D23	CONTROL SUPPORT BRACKET KIT	90-68	5F6	COWL	90-102
5F6	CONTROL SUPPORT COVER	90-102	4C24	CRANK, ROCKSHAFT	70-42
5F6	CONTROL SUPPORT, COVERS AND COWL	90-102	1C4	CRANKSHAFT	20-22
3C17	CONTROL TRANSMISSION SHIFTER	50-35	1C5	CRANKSHAFT	20-23
4D1	CONTROL VALVE	70-44	1C4	CRANKSHAFT DAMPER	20-22
4D3	CONTROL VALVE	70-46	1C7	CRANKSHAFT KIT, UNDERSIZE (CONNECTING ROD JOURNAL) (LATE DESIGN)	20-24A
3G9	CONTROL VALVE BRACKET (PFWD)	50-134	1C6	CRANKSHAFT KIT, UNDERSIZE CONNECTING ROD JOURNAL (EARLY DESIGN)	20-24
3G14	CONTROL VALVE OVERHAUL KIT (PFWD)	50-140	1C14	CRANKSHAFT OIL SEAL	20-29
3G10	CONTROL VALVE PARTS (PFWD)	50-136	1C14	CRANKSHAFT OIL SEAL HOUSING (REAR)	20-29
5B16	CONTROL VALVE, HEATER	90-9	1C4	CRANKSHAFT PULLEY	20-22
1F9	CONTROL, FOOT SPEED	30-58	1C8	CRANKSHAFT, UNDERSIZE MAIN BEARING (EARLIEST DESIGN)	20-25
4D6	CONTROL, LOAD SELECTOR	70-50	5C24	CUSHION, ARMREST (PERSONAL-POSTURE SEAT)	90-44
4D8	CONTROL, LOAD SELECTOR	70-52	5C21	CUSHION, BACKREST	90-40
3E18	CONTROL, PTO CLUTCH (POWER SHIFT)	50-90	5C16	CUSHION, SEAT	90-34
3E10	CONTROL, TRANSMISSION PARK LOCK	50-81	5C21	CUSHION, SEAT	90-40
3C19	CONTROL, TRANSMISSION SHIFTER	50-37	5C16	CUSHION, SEAT BACK	90-34
3C20	CONTROL, TRANSMISSION SHIFTER	50-38	1B15	CYLINDER BLOCK	20-14
3E12	CONTROL, TRANSMISSION SHIFTER	50-84	1B9	CYLINDER HEAD	20-6
2D22	CONTROL, TURN SIGNAL	40-57	1B9	CYLINDER HEAD GASKET	20-6
3F1	CONTROL, VALVE COVER	50-96	1D2	CYLINDER HEAD GASKET SET	20-42
4G11	CONVERSION KIT, REMOTE CYLINDER	70-134	4F21	CYLINDER HOSE IDENTIFICATION KIT	70-120
1B7	COOLANT CONDITIONER	20-2	1C3	CYLINDER LINER	20-21
1C17	COOLER, ENGINE OIL	20-32	1B7	CYLINDER LINER PACKING LUBRICANT	20-2

1A16

4630 TRACTOR

ALPHABETICAL INDEX - CONTINUED

<i>GRID</i>		<i>PAGE</i>	<i>GRID</i>		<i>PAGE</i>
1B8	ENGINE LIFT STRAPS	20-5	4F12	FLEXIBLE OIL LINE COUPLER	70-110
1B6	ENGINE OIL	20-1	2D19	FLOOD LAMPS	40-54
1C17	ENGINE OIL COOLER	20-32	5F1	FLOOR MAT	90-97
1B15	ENGINE OIL DIPSTICK	20-14	5F2	FLOOR MAT	90-98
1C16	ENGINE OIL FILTER	20-31	4D1	FLOW CONTROL VALVE	70-44
1B15	ENGINE OIL PRESSURE SENDER	20-14	4D3	FLOW CONTROL VALVE	70-46
1C15	ENGINE OIL PUMP	20-30	4E20	FLOW CONTROL VALVE, SCV	70-92
1B21	ENGINE OVERHAUL KIT	20-17C	1D24	FLUID, STARTING	30-20
1B17	ENGINE SHORT BLOCK (WITH OIL PUMP)	20-16	1E1	FLUID, STARTING	30-22
1B19	ENGINE SHORT BLOCK (WITHOUT OIL PUMP)	20-17A	1C4	FLYWHEEL	20-22
1C2	ENGINE UNDERHAUL KIT (6404) (STD BRGS)	20-20	1F9	FOOT SPEED CONTROL KIT	30-58
1B7	ENGINE VALVE STEM LUBRICANT	20-2	3E2	FOURTH PLANETARY BRAKE (POWER SHIFT)	50-73
2B9	ENGINE WIRING HARNESS	40-2	4H11	FRAME BAFFLES	80-20
2B15	ETHER SOLENOID WIRING HARNESS	40-7A	4H11	FRAME PLATE	80-20
1D25	ETHER STARTING AID KIT	30-21	4H11	FRAME, SIDE	80-20
2B15	ETHER SWITCH WIRING HARNESS	40-7A	4G18	FRONT AXLE HOUSING	80-1
5B12	EVAPORATOR, AIR CONDITIONING	90-6	4G22	FRONT AXLE KNEE	80-6
1D23	EXHAUST COVER	30-19	4G20	FRONT AXLE KNEE AND KNUCKLE	80-4
1D22	EXHAUST ELBOW	30-18	4G19	FRONT AXLE, ADJUSTABLE TREAD	80-2
1D22	EXHAUST MANIFOLD GASKETS	30-18	4H17	FRONT FENDER BRACKET	80-25A
1D22	EXHAUST MANIFOLDS	30-18	4H17	FRONT FENDER SUPPORT	80-25A
1B12	EXHAUST VALVES	20-10	4H17	FRONT FENDERS	80-25A
1D23	EXTENSION, MUFFLER	30-19	4H23	FRONT HOOD HANDLE KIT	80-31
5F8	EXTINGUISHER, FIRE	90-104	3G19	FRONT HYDRAULIC LINES (PFW)	50-145
F					
1E13	F.I.P. LUBE LINE (EARLY DESIGN)	30-34	2B9	FRONT LAMP WIRING	40-2
1E20	F.I.P. LUBE LINE (LATE DESIGN)	30-42	2B11	FRONT LAMPS	40-4
3I4	FACING, BRAKE	60-34	2D13	FRONT LAMPS	40-48
3I5	FACING, BRAKE	60-35	2D15	FRONT LAMPS	40-50
1C25	FAN	20-40	2D17	FRONT LAMPS	40-52
1C25	FAN BELTS	20-40	1C13	FRONT OIL SEAL	20-28
1C18	FAN BLAST DEFLECTOR KIT	20-33	4E2	FRONT SUPPORT, DRAWBAR	70-73
1C25	FAN PULLEY	20-40	4H10	FRONT WEIGHTS	80-19
1C19	FAN SHROUD	20-34	4H13	FRONT WEIGHTS	80-22
5C10	FENDER, ROLL-GARD	90-28	4H3	FRONT WHEEL BEARING KIT	80-12
5D5	FENDER, SOUND-GARD BODY	90-50	3G16	FRONT WHEEL DRIVE REPLACEMENT KIT	50-142
4H16	FENDERS	80-25	4H1	FRONT WHEELS	80-10
4H17	FENDERS, FRONT	80-25A	1E10	FUEL CHECK VALVE	30-31
5B24	FILTER CAPACITOR KIT, BLOWER MOTOR	90-18	1E5	FUEL FILTER	30-26
3D5	FILTER KIT, INCREASED OIL FILTRATION	50-50	1E6	FUEL FILTER	30-27
1C16	FILTER, ENGINE OIL	20-31	1E5	FUEL FILTER BASE (EARLY DESIGN)	30-26
1E5	FILTER, FUEL	30-26	1E6	FUEL FILTER BASE (LATE DESIGN)	30-27
1E6	FILTER, FUEL	30-27	1E7	FUEL FILTER BASE KIT (REPLACEMENT)	30-28
1D8	FILTER, PRIMARY	30-2	1E8	FUEL FILTER LINE	30-29
5B17	FILTER, RECIRCULATING	90-11	1E5	FUEL FILTER LINES (EARLY DESIGN)	30-26
1D8	FILTER, SECONDARY	30-2	1E6	FUEL FILTER LINES (LATE DESIGN)	30-27
3D4	FILTER, TRANSMISSION HYDRAULIC OIL	50-49	2E9	FUEL GAUGE	40-68
3F4	FILTER, TRANSMISSION OIL (PST)	50-100	1E13	FUEL INJECTION LINES (EARLY DESIGN)	30-34
1F7	FILTERS	30-56	1E20	FUEL INJECTION LINES (LATE DESIGN)	30-42
3F21	FINAL DRIVE KIT, HIGH PRESSURE ANGLE	50-120	1E19	FUEL INJECTION NOZZLE (EARLY DESIGN)	30-40
3F19	FINAL DRIVE SHAFT AND SUN PINION	50-118	1E23	FUEL INJECTION NOZZLE (LATE DESIGN)	30-46
5F8	FIRE EXTINGUISHER	90-104	1E13	FUEL INJECTION NOZZLES (EARLY DESIGN)	30-34
3E5	FIRST PLANETARY BRAKE (POWER SHIFT)	50-76	1E20	FUEL INJECTION NOZZLES (LATE DESIGN)	30-42
3H3	FIXED STEERING	60-6	1E13	FUEL INJECTION PUMP (EARLY DESIGN)	30-34
3H12	FIXED STEERING	60-16	1E20	FUEL INJECTION PUMP (LATE DESIGN)	30-42
3H7	FIXED STEERING PIPES	60-10	1E17	FUEL INJECTION PUMP GOVERNOR LEVERS AND CONTROLS	30-38
2C1	FLASHER, WARNING LAMP (LESS SGB)	40-17	1E15	FUEL INJECTION PUMP HOUSING CONNECTORS	30-36
2B20	FLASHER, WARNING LAMP (SGB)	40-12	1E9	FUEL INLET LINE (REPLACEMENT)	30-30
2B22	FLASHER, WARNING LAMP (SGB)	40-14	1F1	FUEL SHUT-OFF	30-50
2G6	FLASHING WARNING LAMP KIT	40-105A	1F2	FUEL SHUT-OFF	30-51
4G12	FLEXIBLE OIL LINE (BULK)	70-135	1F4	FUEL SHUT-OFF	30-53
			1E3	FUEL TANK	30-24
			1E3	FUEL TANK INSTALLATION KIT	30-24
			1E25	FUEL TRANSFER PUMP	30-49

1A17

4630 TRACTOR

ALPHABETICAL INDEX - CONTINUED

GRID		PAGE	GRID		PAGE
G					
1D2	GASKET SET, CYLINDER HEAD	20-42	2B11	HARNES, WIRING (ROLL-GARD AND SOUND-GARD BODY).....	40-4
1D2	GASKET SET, ENGINE	20-42	2B8	HARNES, WIRING AIR COMPRESSOR.....	40-1
1B9	GASKET, CYLINDER HEAD	20-6	2C5	HARNES, WIRING, INSTRUMENT PANEL	40-21
1B25	GASKET, OIL PAN.....	20-18	2C4	HARNES, WIRING, INSTRUMENT PANEL (PFWD)	40-20
1C13	GASKET, TIMING GEAR COVER GASKET	20-28	2G8	HARNES,WIRING, SUPPLEMENTARY WIRING KIT.....	40-106
3E1	GASKET, TRANSMISSION KIT	50-72	1B9	HEAD BOLTS	20-6
1D1	GASKET, WATER MANIFOLD	20-41	1B9	HEAD, CYLINDER	20-6
1C25	GASKET, WATER PUMP.....	20-40	5C7	HEADLINER, ROLL-GARD CANOPY	90-24
1D22	GASKETS, EXHAUST MANIFOLD	30-18	5C12	HEADLINER, ROLL-GARD CANOPY	90-30
1D12	GASKETS, INTAKE MANIFOLD	30-8	5E11	HEADLINER, SOUND-GARD BODY	90-81
2E9	GAUGE CLUSTER	40-68	5E9	HEADLINES, CAB	90-78
2E9	GAUGE, FUEL	40-68	2F7	HEADPHONES, RADIO	40-88
4E16	GAUGE, HYDRAULIC OIL PRESSURE	70-88	5B16	HEATER CONTROL VALVE	90-9
2E9	GAUGE, OIL PRESSURE	40-68	5C1	HEATER INSTALLATION KIT	90-20
3E19	GAUGE, TEMPERATURE SENDER	50-91	5C3	HEATER SUPPLY LINE.....	90-22
3E20	GAUGE, TEMPERATURE SENDER	50-92	1C24	HEATER, ENGINE COOLANT.....	20-39
2E9	GAUGE, VOLTMETER.....	40-68	1C23	HEATER, ENGINE, COOLANT	20-38
2E9	GAUGE, WATER TEMPERATURE	40-68	3D6	HEATER, OIL FILTER	50-51
3C19	GEAR SHIFT LEVER	50-37	5C1	HEATER, SOUND-GARD BODY	90-20
3E12	GEAR SHIFT LEVER	50-84	3C13	HIGH AND LOW SHIFTER SHAFT.....	50-31
3C15	GEAR SHIFTER SHAFT	50-33	3C14	HIGH AND LOW SHIFTER SHAFT.....	50-32
3E8	GEAR, BEVEL, DIFFERENTIAL	50-79	3F19	HIGH PRESSURE ANGLE FINAL DRIVE KIT	50-118
3F13	GEAR, BEVEL, DIFFERENTIAL	50-110	3F21	HIGH PRESSURE ANGLE FINAL DRIVE KIT	50-120
3F15	GEAR, BEVEL, DIFFERENTIAL	50-112	5D15	HINGE KIT	90-60
3C2	GEAR, BEVEL, DIFFERENTIAL (QRT AND SRT)	50-21A	4D21	HITCH, 3-POINT, CENTER LINK	70-66
1B13	GEAR, CAMSHAFT	20-11	4D21	HITCH, 3-POINT, DRAFT LINKS.....	70-66
3C1	GEAR, COUNTERSHAFT	50-21	4D24	HITCH, 3-POINT, QUICK COUPLER	70-70
1C5	GEAR, OIL PUMP DRIVE	20-23	5C23	HOLDER, OPERATOR'S MANUAL (LESS SGB).....	90-43
3D3	GEAR, OIL PUMP DRIVE	50-48	4H24	HOOD	80-32
3D8	GEAR, PTO DRIVE (SYNCRO-RANGE	50-53	4H23	HOOD HANDLE KIT, FRONT	80-31
3D2	GEAR, PTO DRIVE SHAFT AND	50-47	4H24	HOOD ORNAMENT	80-32
3D7	GEAR, PTO DRIVE SHAFT AND IDLER	50-52	4H24	HOOD, SUPPORTS AND BAFFLES	80-32
3D10	GEAR, PTO SHAFT AND DRIVE (1000 RPM).....	50-55	2E15	HORN	40-70
1C4	GEAR, STARTER RING.....	20-22	2E16	HORN ASSEMBLY, DUAL.....	40-71
3F8	GEARS, 1000 RPM PTO IDLER (POWER SHIFT)	50-104	2E7	HORN BUTTON	40-66
3C20	GEARSHIFT LEVER.....	50-38	2E16	HORN SWITCH	40-71
5E14	GLASS SEALS, SOUND-GARD BODY.....	90-84	2E17	HORN SWITCH	40-72
5E25	GLASS, REAR SLIDING	90-96	2E17	HORN, ELECTRIC	40-72
1E17	GOVERNOR LEVERS AND CONTROLS, FUEL INJECTION PUMP	30-38	2E16	HORN, ELECTRIC (12 VOLT) (HIGH NOTE).....	40-71
4H22	GRILLE	80-30	2E16	HORN, ELECTRIC (12 VOLT) (LOW NOTE)	40-71
2B16	GROUND CABLE, BATTERY	40-8	4F21	HOSE IDENTIFICATION KIT, REMOTE CYLINDER	70-120
5D7	GROUND LEAD, SOUND-GARD BODY	90-52	1C19	HOSE, RADIATOR	20-34
4I8	GROUND SPEED CHART.....	80-40	4F19	HOSE, REMOTE CYLINDER.....	70-118
3F9	GUARD, REAR PTO (POWER SHIFT).....	50-105	5C1	HOSES, HEATER, SOUND-GARD BODY	90-20
3D9	GUARD, REAR PTO (QRT AND SRT).....	50-54	3D14	HOUSING CLUTCH VALVE (PST)	50-60
3D8	GUARD, REAR PTO (SYNCRO-RANGE).....	50-53	5B22	HOUSING, BLOWER, CAB	90-16
1D7	GUN, AIR CLEANER ELEMENT CLEANING	30-1	3C10	HOUSING, BRAKE PISTON (QRT).....	50-28
H					
1F5	HAND SPEED CONTROL LINKAGE.....	30-54	3C8	HOUSING, BRAKE PISTON (QUAD-RANGE)	50-26
4H23	HANDLE KIT, FRONT HOOD	80-31	3D13	HOUSING, CLUTCH (POWER SHIFT)	50-58
4D21	HANDLE, CENTER LINK ADJUSTING	70-66	3B9	HOUSING, CLUTCH (QRT AND SRT)	50-3
5D19	HANDLE, DOOR.....	90-64	3B8	HOUSING, CLUTCH (SYNCRO-RANGE)	50-2
5D17	HANDLE, DOOR, SOUND-GARD BODY	90-62	3B13	HOUSING, CLUTCH OPERATING (PERMA-CLUTCH)	50-8
5D21	HANDLE, DOOR, SOUND-GARD BODY (LATE DESIGN).....	90-66	3B15	HOUSING, CLUTCH OPERATING (QRT AND SRT)	50-10
4D24	HANDLE, LIFT LINK ADJUSTING.....	70-70	3E20	HOUSING, CLUTCH REGULATING VALVE	50-92
4H24	HANDLE, TRACTOR MOUNTING	80-32	3B19	HOUSING, CLUTCH VALVE (QRT AND SRT).....	50-14
4I3	HANDLE, TRACTOR MOUNTING, RIGHT-HAND	80-36	2D24	HOUSING, CONSOLE LIGHT, FOUR-POST ROLL-G ARD	40-59
5F10	HANDREST.....	90-106	1C14	HOUSING, CRANKSHAFT OIL SEAL (REAR)	20-29
2B9	HARNES, WIRING	40-2	3F13	HOUSING, DIFFERENTIAL	50-110
			3F15	HOUSING, DIFFERENTIAL	50-112
			3F10	HOUSING, DIFFERENTIAL LOCK VALVE	50-106
			4G18	HOUSING, FRONT AXLE	80-1
			1C16	HOUSING, OIL FILTER	20-31
			3D11	HOUSING, OIL FILTER VALVE.....	50-56
			3F25	HOUSING, POWER FRONT WHEEL DRIVE	50-124
			3E19	HOUSING, PRES. REGULATING VALVE.....	50-91

1A18

4630 TRACTOR

ALPHABETICAL INDEX - CONTINUED

GRID		PAGE	GRID		PAGE
3F19	HOUSING, REAR AXLE.....	50-118	1B9	INSERTS, VALVE SEAT	20-6
4C20	HOUSING, ROCKSHAFT	70-38	2E3	INSTALLATION KIT, SPOTLIGHT	40-62
4C22	HOUSING, ROCKSHAFT	70-40	5F12	INSTRUMENT PANEL	90-108
4D1	HOUSING, ROCKSHAFT CONTROL VALVE	70-44	1D12	INTAKE MANIFOLD	30-8
4D3	HOUSING, ROCKSHAFT CONTROL VALVE	70-46	1D12	INTAKE MANIFOLD GASKETS	30-8
4E20	HOUSING, SELECTIVE CONTROL VALVE	70-92	1B12	INTAKE VALVES	20-10
4E22	HOUSING, SELECTIVE CONTROL VALVE	70-94	1D10	INTAKE, AIR	30-5
4E24	HOUSING, SELECTIVE CONTROL VALVE	70-96	3F4	INTAKE, TRANSMISSION OIL FILTER (PST)	50-100
4F2	HOUSING, SELECTIVE CONTROL VALVE	70-99	4F7	ISO COUPLER CONVERSION KIT	70-104
4F3	HOUSING, SELECTIVE CONTROL VALVE	70-100	4F9	ISO COUPLER OVERHAUL KIT	70-106
3F2	HOUSING, SHIFT VALVE	50-97	4F7	ISO COUPLER RECEPTACLE	70-104
2D5	HOUSING, STARTER DRIVE (JOHN DEERE) (DIESEL).....	40-45A	4F7	ISO TO JOHN DEERE COUPLER CONVERSION	70-104
3H18	HOUSING, STEERING VALVE	60-20			
3E16	HOUSING, TRANSMISSION CLUTCH VALVE.....	50-88		K	
3E22	HOUSING, TRANSMISSION CONTROL VALVE	50-94			
1D17	HOUSING, TURBOCHARGER CENTER (AIRESEARCH)	30-13	2E7	KEY, IGNITION.....	40-66
1D19	HOUSING, TURBOCHARGER CENTER (EARLY DESIGN).....	30-15	4G14	KIT, AIR CONDITIONING O-RING	70-137
1D21	HOUSING, TURBOCHARGER CENTER (LATE DESIGN)	30-17	5B12	KIT, AIR CONDITIONING O-RING	90-6
1E22	HYDRAULIC ANEROID ACTIVATOR	30-44	5B14	KIT, AIR CONDITIONING RETROFIT	90-7A
4F18	HYDRAULIC CONTROL LEVER SUPPORT	70-117	1D10	KIT, AIR STACK.....	30-5
4F11	HYDRAULIC DIAGNOSTIC RECEPTACLE	70-109	2E21	KIT, AM RADIO (MOTOROLA)	40-76
3G20	HYDRAULIC DRAIN PIPES, REAR (PFWD)	50-146	2E22	KIT, AM-FM RADIO (MOTOROLA)	40-77
1E12	HYDRAULIC HOSE, WATER SEPARATOR	30-33	4F14	KIT, AUXILIARY HYDRAULIC OUTLET	70-112
3F23	HYDRAULIC LINE SHIELD	50-122	5B24	KIT, BLOWER FILTER CAPACITOR.....	90-18
3G18	HYDRAULIC LINES, FRONT (PFWD).....	50-144	5C4	KIT, BOLTS AND SEAT BELT FOR ROLL-GARD	90-23
4G15	HYDRAULIC OIL	70-138	2F1	KIT, BOMAN TAPE PLAYER.....	40-81
4C18	HYDRAULIC OIL ATTENUATOR.....	70-36	3I12	KIT, BRAKE VALVE OVERHAUL	60-42
4G13	HYDRAULIC OIL CLEAN-UP KIT	70-136	4F2	KIT, BREAKAWAY COUPLER OVERHAUL	70-99
4C8	HYDRAULIC OIL COOLER	70-26	4F5	KIT, BREAKAWAY COUPLER OVERHAUL	70-102
4F22	HYDRAULIC OIL LINES, IMPLEMENT	70-121	3H10	KIT, CAP PLUG ASSORTMENT	60-14
4C14	HYDRAULIC OIL RESERVOIR	70-32	3I6	KIT, CAP PLUG ASSORTMENT	60-36
4B11	HYDRAULIC PUMP (PFWD) (4 IN3).....	70-6	2B24	KIT, CIRCUIT BREAKER SUPPORT.....	40-15B
4B9	HYDRAULIC PUMP (3 IN3).....	70-4	4E12	KIT, CLEVIS, DRAWBAR PIN	70-84
4B8	HYDRAULIC PUMP ASSEMBLY, REPLACEMENT	70-3	5B8	KIT, COMPRESSOR SHAFT SEAL.....	90-2
4B7	HYDRAULIC PUMP DRIVE	70-1	3G14	KIT, CONTROL VALVE OVERHAUL (PFWD)	50-140
4B15	HYDRAULIC PUMP ELECTRIC DESTROKE KIT.....	70-10	2G7	KIT, CONVENIENCE ELECTRICAL OUTLET	40-105B
4C1	HYDRAULIC PUMP ELECTRIC DESTROKE KIT.....	70-20	2G7	KIT, CONVENIENCE ELECTRICAL OUTLET SOCKET	40-105B
4C3	HYDRAULIC PUMP ELECTRIC-DESTROKE KIT.....	70-21A	4G11	KIT, CONVERSION, REMOTE CYLINDER.....	70-134
4C16	HYDRAULIC PUMP LINES	70-34	4E17	KIT, COVER, DUAL SELECTIVE CONTROL	70-89
4B17	HYDRAULIC PUMP OVERHAUL KIT	70-12	4E17	KIT, COVER, TRIPLE SELECTIVE CONTROL.....	70-89
4C4	HYDRAULIC PUMP OVERHAUL KIT	70-22	1D2	KIT, CYLINDER HEAD AND COMPLETE GASKET.....	20-42
4B21	HYDRAULIC PUMP REPLACEMENT (PFWD) (4 IN3).....	70-16	4F21	KIT, CYLINDER HOSE IDENTIFICATION.....	70-120
4B19	HYDRAULIC PUMP REPLACEMENT (3 IN3).....	70-14	4I6	KIT, DECAL REFINISHING	80-38
4B13	HYDRAULIC PUMP STROKE CONTROL VALVE	70-8	4I9	KIT, DECAL, BI-LINGUAL	80-42
4B23	HYDRAULIC PUMP STROKE CONTROL VALVE	70-18	3F17	KIT, DIFFERENTIAL, ANTI-FRICTION	50-116
3G9	HYDRAULIC PUMP SUPPORT (PFWD).....	50-134	4E18	KIT, DIRECTIONAL CONTROL VALVE	70-90
4C9	HYDRAULIC RETURN OIL LINES, FRONT	70-27	4E19	KIT, DIRECTIONAL CONTROL VALVE	70-91
4C10	HYDRAULIC RETURN OIL LINES, REAR	70-28	5D15	KIT, DOOR	90-60
4C12	HYDRAULIC RETURN OIL LINES, REAR	70-30	4E6	KIT, DRAWBAR SUPPORT	70-78
4C11	HYDRAULIC THERMOSTAT BYPASS VALVE.....	70-29	4E10	KIT, DRAWBAR SUPPORT	70-82
	I		2G5	KIT, ELECTRICAL OUTLET SOCKET	40-105
2E7	IGNITION SWITCH.....	40-66	2F25	KIT, ELECTRICAL REMOTE CONTROL	40-100
5B22	IMPELLER, BLOWER, CAB.....	90-16	2G2	KIT, ELECTRICAL REMOTE CONTROL WIRING	40-102
4F22	IMPLEMENT HYDRAULIC OIL LINES	70-121	1B21	KIT, ENGINE OVERHAUL	20-17C
4E14	IMPLEMENT LINK	70-86	1D25	KIT, ETHER STARTING AID	30-21
4D24	IMPLEMENT QUICK COUPLER	70-70	1E2	KIT, ETHER STARTING TUBE	30-23
4D23	IMPLEMENT SAFETY CHAIN	70-69	1C18	KIT, FAN BLAST DEFLECTOR	20-33
2E9	INDICATOR LAMPS.....	40-68	2F4	KIT, FENDER MOUNTED ANTENNA	40-85
5E7	INNER ROOF, SOUND-GARD BODY.....	90-76	2G6	KIT, FLASHING WARNING LAMP	40-105A
			2D19	KIT, FLOOD LAMPS	40-54
			1F9	KIT, FOOT SPEED CONTROL	30-58
			4H23	KIT, FRONT HOOD HANDLE	80-31
			1E7	KIT, FUEL FILTER BASE (REPLACEMENT)	30-28
			1E3	KIT, FUEL TANK INSTALLATION	30-24
			5C1	KIT, HEATER INSTALLATION.....	90-20

1A19

4630 TRACTOR

ALPHABETICAL INDEX - CONTINUED

GRID		PAGE	GRID		PAGE
3F19	KIT, HIGH PRESSURE ANGLE FINAL DRIVE.....	50-118			
3F21	KIT, HIGH PRESSURE ANGLE FINAL DRIVE.....	50-120			
5D15	KIT, HINGE.....	90-60			
4G13	KIT, HYDRAULIC OIL CLEAN-UP.....	70-136			
4C14	KIT, HYDRAULIC OIL RESERVOIR	70-32			
4C1	KIT, HYDRAULIC PUMP ELECTRIC DESTORKE	70-20			
4B15	KIT, HYDRAULIC PUMP ELECTRIC DESTROKE	70-10			
4C3	KIT, HYDRAULIC PUMP ELECTRIC DESTROKE	70-21A			
4B17	KIT, HYDRAULIC PUMP OVERHAUL.....	70-12			
4C4	KIT, HYDRAULIC PUMP OVERHAUL.....	70-22			
3D5	KIT, INCREASED OIL FILTRATION	50-50			
3F3	KIT, INCREASED OIL FILTRATION (PST).....	50-98			
2D21	KIT, LAMPS AND LEADS FOR TURN SIGNALS.....	40-56			
3D11	KIT, MANUAL BYPASS VALVE.....	50-56			
3E20	KIT, MANUAL BYPASS VALVE.....	50-92			
2E18	KIT, NEUTRAL START SWITCH.....	40-73			
4G14	KIT, O-RING, HYDRAULIC	70-137			
1C1	KIT, OIL PAN	20-19			
3D1	KIT, OUTBOARD SHIFTER (SRT)	50-46			
4G8	KIT, OVERHAUL, REMOTE CYLINDER	70-132			
4F1	KIT, OVERHAUL, SELECTIVE CONTROL VALVE	70-98			
3G6	KIT, PFWD BRAKE PISTON SEAL.....	50-131			
3G7	KIT, PFWD MANIFOLD AND PIVOT PIN SEAL.....	50-132			
1C3	KIT, PISTON/LINER	20-21			
2F2	KIT, RADIO ANTENNA.....	40-82			
2E20	KIT, RADIO MOUNTING	40-75			
4G3	KIT, REMOTE CYLINDER OVERHAUL	70-127			
1D11	KIT, REMOTE MOUNTED VACUUM SWITCH.....	30-6			
4D1	KIT, ROCKSHAFT CONTROL STABILIZER (SGB)	70-44			
4C22	KIT, SCV CONTROL LEVER STABILIZER.....	70-40			
4D14	KIT, SCV CONTROL VALVE LEVER STABILIZER	70-58			
4E25	KIT, SELECTIVE CONTROL VALVE.....	70-97			
2B25	KIT, SERVICE WIRE RESISTANCE	40-16			
5E23	KIT, SOUND-GARD BODY UPHOLSTERY (BLACK).....	90-94			
2F3	KIT, SPEAKER	40-83			
2F2	KIT, SPEAKERS.....	40-82			
2D10	KIT, STARTER SEALING.....	40-45F			
2C17	KIT, STARTER SOLENOID COVER (DELCO-REMY)	40-33			
2B15	KIT, STARTING AID WIRING	40-7A			
1F2	KIT, STARTING FUEL CONTROL.....	30-51			
1F3	KIT, STARTING FUEL CONTROL.....	30-52			
3H16	KIT, STEERING METERING PUMP	60-19A			
3G23	KIT, STEERING VALVE CYL. COVER PACKING	60-1			
3H5	KIT, STEERING VALVE CYLINDER OVERHAUL	60-8			
4I4	KIT, STEPS.....	80-37A			
3G24	KIT, STRG. VALVE CYLINDER COVER PACKING.....	60-2			
4B13	KIT, STROKE CONTROL VALVE SHUT-OFF	70-8			
4B23	KIT, STROKE CONTROL VALVE SHUT-OFF	70-18			
5B8	KIT, SUPERHEAT SHUT-OFF.....	90-2			
2G8	KIT, SUPPLEMENTARY WIRING	40-106			
3E24	KIT, TRANSMISSION CONTROL VALVE	50-95A			
3E1	KIT, TRANSMISSION GASKET	50-72			
2D22	KIT, TURN SIGNAL	40-57			
1C2	KIT, UNDERHAUL ENGINE (6404) (STD BRGS).....	20-20			
1D8	KIT, VACUUM SWITCH	30-2			
2B18	KIT, WIRING ACCESSORY RELAY (SGB)	40-10			
2B19	KIT, WIRING ACCESSORY RELAY (SGB)	40-11			
2G18	KIT, ELECTRICAL CONNECTOR AND TERMINAL.....	40-116			
4H3	KIT, FRONT WHEEL BEARING	80-12			
4G20	KNEE, FRONT AXLE	80-4			
3F25	KNEE, POWER FRONT WHEEL DRIVE	50-124			
1F5	KNOB, HAND SPEED CONTROL LEVER	30-54			
4G20	KNUCKLE, FRONT AXLE	80-4			
				L	
4H24	LABEL SERIES.....	80-32			
2C17	LABEL, BYPASS STARTER	40-33			
2D4	LABEL, BYPASS STARTER	40-45			
5C4	LABEL, CAUTION, ROLL-GARD	90-23			
5C4	LABEL, SEAT BELT CAUTION	90-23			
2C4	LABEL, SWITCH (PFWD)	40-20			
4H24	LABEL, TRIM	80-32			
4I9	LABELS, BI-LINGUAL	80-42			
4I8	LABELS, GROUND SPEED.....	80-40			
2B9	LAMP, CONSOLE.....	40-2			
5F12	LAMP, DASH	90-108			
2D19	LAMP, FLOOD	40-54			
2B9	LAMP, FRONT	40-2			
2B11	LAMP, FRONT	40-4			
2D13	LAMP, FRONT	40-48			
2D15	LAMP, FRONT	40-50			
2D17	LAMP, FRONT	40-52			
2E9	LAMP, INDICATOR	40-68			
2B9	LAMP, REAR	40-2			
2B11	LAMP, REAR	40-4			
2D13	LAMP, REAR	40-48			
2D15	LAMP, REAR	40-50			
2D17	LAMP, REAR	40-52			
2B9	LAMP, WARNING.....	40-2			
2B11	LAMP, WARNING.....	40-4			
2D13	LAMP, WARNING.....	40-48			
2D15	LAMP, WARNING.....	40-50			
2D17	LAMP, WARNING.....	40-52			
2D21	LAMP, WARNING.....	40-56			
2D20	LAMP, WARNING (LESS RG OR SGB)	40-55			
2D21	LAMPS AND LEADS FOR TURN SIGNALS KIT	40-56			
2D15	LAMPS, ROLL-GARD.....	40-50			
2D17	LAMPS, SOUND-GARD BODY	40-52			
5D19	LATCH, DOOR	90-64			
5D17	LATCH, DOOR, SOUND-GARD BODY.....	90-62			
5D2	LATCH, SEAT	90-47			
5D21	LATCH, SOUND-GARD BODY DOOR (LATE DESIGN).....	90-66			
4I2	LEFT-HAND STEP (LESS RG OR SGB)	80-35			
4I1	LEFT-HAND STEP (RG AND SGB)	80-34			
3C19	LEVER, GEAR SHIFT	50-37			
3C20	LEVER, GEARSHIFT (QUAD-RANGE)	50-38			
4D6	LEVER, LOAD SELECTOR CONTROL.....	70-50			
4D8	LEVER, LOAD SELECTOR CONTROL.....	70-52			
3E18	LEVER, PTO CLUTCH (POWER SHIFT)	50-90			
3B22	LEVER, PTO CLUTCH (QRT AND SRT)	50-17			
3B21	LEVER, PTO CLUTCH (SRT)	50-16			
4D10	LEVER, ROCKSHAFT CONTROL LEVER	70-54			
3C25	LEVER, SPEED SELECTOR	50-44			
3E12	LEVER, TRANSMISSION SHIFTER CONTROL	50-84			
4F16	LEVERS, SELECTIVE CONTROL	70-114			
3H2	LEVERS, STEERING VALVE OPERATING	60-5			
4D19	LIFT LINK	70-64			
1B8	LIFT STRAPS.....	20-5			
2E7	LIGHT SWITCH	40-66			
2D23	LIGHT, DOME.....	40-58			
2D24	LIGHT, DOME (LATE DESIGN).....	40-59			
2E7	LIGHTER, CIGAR.....	40-66			
4G12	LINE, BULK FLEXIBLE OIL	70-135			
1E8	LINE, FUEL FILTER.....	30-29			
1E9	LINE, FUEL INLET (REPLACEMENT)	30-30			
5C3	LINE, HEATER SUPPLY	90-22			
4C16	LINE, HYDRAULIC PUMP SEAL DRAIN	70-34			
1C3	LINER SHIM	20-21			
1C3	LINER, CYLINDER	20-21			

ALPHABETICAL INDEX - CONTINUED

GRID	PAGE	GRID	PAGE		
5B12	LINES, AIR CONDITIONING	90-6	3H13	METERING PUMP, STEERING	60-17
3I6	LINES, BRAKE OIL (REAR).....	60-36	4E20	METERING VALVE, SCV.....	70-92
3I8	LINES, BRAKE OIL (UPPER)	60-38	5F20	MIRROR, OUTSIDE REAR VIEW	90-116
5B10	LINES, COMPRESSOR	90-4	5F21	MIRROR, REAR VIEW.....	90-117
5B11	LINES, CONDENSER.....	90-5	5F22	MIRROR, REAR VIEW.....	90-118
3F11	LINES, DIFFERENTIAL LOCK VALVE OIL.....	50-107	5E12	MOLDING, SOUND-GARD BODY	90-82
3H21	LINES, FLEXIBLE STEERING.....	60-25	5E14	MOLDING, SOUND-GARD BODY	90-84
1E6	LINES, FUEL FILTER (LATE DESIGN).....	30-27	2F24	MOMENTARY ROCKER SWITCH.....	40-99
1E5	LINES, FUEL FILTER (EARLY DESIGN)	30-26	5B20	MOTOR, PRESSURIZER BLOWER	90-14
1E13	LINES, FUEL INJECTION (EARLY DESIGN)	30-34	5B22	MOTOR, PRESSURIZER BLOWER	90-16
1E20	LINES, FUEL INJECTION (LATE DESIGN)	30-42	2C16	MOTOR, STARTING.....	40-32
5C1	LINES, HEATER, SOUND-GARD BODY	90-20	2C18	MOTOR, STARTING (DELCO-REMY).....	40-34
3G18	LINES, HYDRAULIC (PFWD).....	50-144	3H11	MOTOR, STEERING	60-15
3G19	LINES, HYDRAULIC (PFWD).....	50-145	3I1	MOTOR, STEERING (ADJUSTABLE FRONT AXLE).....	60-30
4C9	LINES, OIL, HYDRAULIC COOLER RETURN	70-27	2F10	MOTOR, WINDSHIELD WIPER (R.H.)	40-92
4C12	LINES, OIL, HYDRAULIC COOLER RETURN	70-30	2F8	MOTOR, WINDSHIELD WIPER	40-90
4C10	LINES, OIL, HYDRAULIC COOLER RETURN REAR	70-28	2F14	MOTOR, WINDSHIELD WIPER.....	40-93C
4F22	LINES, OIL, IMPLEMENT HYDRAULIC	70-121	2F16	MOTOR, WINDSHIELD WIPER.....	40-93E
4C16	LINES, OIL, MAIN HYDRAULIC	70-34	2F12	MOTOR, WINDSHIELD WIPER, (R.H.).....	40-93A
3H23	LINES, OIL, STEERING (FRONT).....	60-28	2F23	MOTOR, REAR WINDSHIELD WIPER.....	40-98
3H21	LINES, OIL, STEERING (REAR)	60-25	2E22	MOTOROLA AM-FM RADIO	40-77
4E16	LINES, POWER WEIGHT TRANSFER	70-88	2E21	MOTOROLA RADIO	40-76
3H22	LINES, STEERING (MIDDLE)	60-26	4H24	MOUNTING HANDLE.....	80-32
1D14	LINES, TURBOCHARGER OIL	30-10	4I3	MOUNTING HANDLE, RIGHT-HAND	80-36
4D21	LINK, CENTER	70-66	2E24	MOUNTING KIT, CB RADIO	40-79
3F12	LINK, DIFFERENTIAL LOCK RELEASE	50-108	2E20	MOUNTING KIT, RADIO	40-75
4D21	LINK, DRAFT	70-66	5C9	MOUNTS, ROLL-GARD, FOUR-POST	90-27
4E3	LINK, DRAFT, SUPPORT	70-75	5D7	MOUNTS, SOUND-GARD BODY	90-52
4E14	LINK, IMPLEMENT	70-86	1D23	MUFFLER	30-19
4D19	LINK, LIFT.....	70-64	1D23	MUFFLER EXTENSION	30-19
4D6	LINKAGE, ROCKSHAFT CONTROL	70-50			
4F16	LINKAGE, SELECTIVE CONTROL	70-114		N	
1F5	LINKAGE, SPEED CONTROL	30-54	2E18	NEUTRAL START SWITCH KIT	40-73
1F9	LINKAGE, SPEED CONTROL	30-58	3C13	NEUTRAL START SWITCH.....	50-31
4D5	LOAD CONTROL	70-49	3C14	NEUTRAL START SWITCH.....	50-32
4E3	LOAD CONTROL SHAFT.....	70-75	3E22	NEUTRAL START SWITCH.....	50-94
4D8	LOAD SELECTOR CONTROL.....	70-52	2C5	NEUTRAL START SWITCH (PFWD).....	40-21
4D6	LOAD SELECTOR CONTROL LINKAGE	70-50	3F1	NEUTRAL START SWITCH SHIELD.....	50-96
1B23	LONGBLOCK, COMPLETE BLOCK ASSEMBLY	20-17E	5B22	NOISE FILTER CAPACITOR, BLOWER MOTOR	90-16
2F3	LOUD SPEAKER, RADIO	40-83	2F18	NOISE SUPPRESSION KIT, WIPER MOTOR	40-94
5B16	LOUVER, AIR	90-9	2C2	NOISE SUPPRESSOR CAPACITOR, RADIO.....	40-18
5B15	LOUVER, AIR, SOUND-GARD BODY.....	90-8	1E19	NOZZLE, FUEL INJECTION (EARLY DESIGN).....	30-40
1E13	LUBE LINE, F.I.P. (EARLY DESIGN)	30-34	1E23	NOZZLE, FUEL INJECTION (LATE DESIGN)	30-46
1E20	LUBE LINE, F.I.P. (LATE DESIGN).....	30-42	1E13	NOZZLES, FUEL INJECTION (EARLY DESIGN)	30-34
1B7	LUBRICANT, CYLINDER LINER PACKING	20-2	1E20	NOZZLES, FUEL INJECTION (LATE DESIGN)	30-42
1B7	LUBRICANT, ENGINE VALVE STEM	20-2			
	M				
1C11	MAIN BEARINGS	20-26		O	
2D6	MAIN FRAME, STARTER (JOHN DEERE) (DIESEL).....	40-45B	4G14	O-RING AIR CONDITIONING KIT	70-137
1C11	MAIN THRUST BEARINGS	20-26	4G14	O-RING PACKING KIT.....	70-137
3G7	MANIFOLD AND PIVOT PIN SEAL KIT, PFWD	50-132	1C15	OIL COOLER BYPASS VALVE	20-30
3D19	MANIFOLD, CLUTCH OIL (POWER SHIFT).....	50-66	1C17	OIL COOLER, ENGINE	20-32
1D12	MANIFOLD, INTAKE.....	30-8	4C8	OIL COOLER, HYDRAULIC.....	70-26
3F24	MANIFOLD, POWER FRONT WHEEL DRIVE	50-123	4C20	OIL FILLER TUBE	70-38
3D3	MANIFOLD, TRANSMISSION OIL PUMP	50-48	3D4	OIL FILTER COVER.....	50-49
1D1	MANIFOLD, WATER.....	20-41	3F4	OIL FILTER COVER, TRANSMISSION (PST)	50-100
1D22	MANIFOLDS, EXHAUST	30-18	3D4	OIL FILTER ELEMENT, TRANSMISSION.....	50-49
3D11	MANUAL BYPASS VALVE.....	50-56	3D6	OIL FILTER HEATER.....	50-51
3E20	MANUAL BYPASS VALVE KIT	50-92	1C16	OIL FILTER HOUSING.....	20-31
5F2	MAT, FLOOR	90-98	3D11	OIL FILTER RELIEF VALVE	50-56
4H24	MEDALLION	80-32	3F4	OIL FILTER, ELEMENT, TRANSMISSION (PST).....	50-100
5E12	METAL TRIM, SOUND-GARD BODY	90-82	1C16	OIL FILTER, ENGINE.....	20-31
5F12	METER, SPEED-HOUR	90-108	3F3	OIL FILTRATION KIT (PST).....	50-98

1A21

4630 TRACTOR

ALPHABETICAL INDEX - CONTINUED

<i>GRID</i>		<i>PAGE</i>	<i>GRID</i>		<i>PAGE</i>
3D5	OIL FILTRATION KIT, INCREASED	50-50	3C2	PINION, DIFFERENTIAL BEVEL (QRT AND SRT)	50-21A
3H23	OIL LINES STEERING (FRONT).....	60-28	3G5	PINION, FIRST PLANET (PFWD)	50-130
3I6	OIL LINES, BRAKE (REAR).....	60-36	3C4	PINION, HIGH RANGE (QRT AND SRT)	50-22
3F11	OIL LINES, DIFFERENTIAL LOCK VALVE.....	50-107	3C4	PINION, LOW RANGE (QRT AND SRT)	50-22
4C16	OIL LINES, HYDRAULIC SYSTEM	70-34	3F19	PINION, PLANET (REAR AXLE)	50-118
4F22	OIL LINES, HYDRAULIC, IMPLEMENT	70-121	3E6	PINION, PLANETARY (POWER SHIFT).....	50-77
3H22	OIL LINES, STEERING (MIDDLE).....	60-26	3G4	PINION, SECOND PLANET	50-129
3H21	OIL LINES, STEERING (REAR)	60-25	4F13	PIPE, PRESSURE, SELECTIVE CONTROL.....	70-111
1D14	OIL LINES, TURBOCHARGER	30-10	5B12	PIPES, AIR CONDITIONING	90-6
3I8	OIL LINES, UPPER BRAKE.....	60-38	3H7	PIPES, FIXED STEERING	60-10
1B25	OIL PAN	20-18	3H10	PIPES, FRONT STEERING	60-14
1B25	OIL PAN GASKET	20-18	1E3	PIPES, FUEL	30-24
1C1	OIL PAN KIT.....	20-19	1E13	PIPES, FUEL INJECTION (EARLY DESIGN).....	30-34
4C18	OIL PIPES, ATTENUATOR	70-36	3G19	PIPES, HYDRAULIC (PFWD)	50-145
3H7	OIL PIPES, FIXED STEERING	60-10	4C6	PIPES, OIL, ROCKSHAFT	70-24
3H10	OIL PIPES, FRONT STEERING	60-14	3F6	PIPES, OIL, TRANSMISSION CONTROL.....	50-102
4C6	OIL PIPES, HYDRAULIC SYSTEM	70-24	3G20	PIPES, REAR HYDRAULIC DRAIN (PFWD)	50-146
3H8	OIL PIPES, TELESCOPING STEERING	60-12	3H8	PIPES, TELESCOPING STEERING	60-12
3F6	OIL PIPES, TRANSMISSION CONTROL	50-102	1C3	PISTON RINGS	20-21
2E9	OIL PRESSURE GAUGE.....	40-68	1C3	PISTON/LINER KIT	20-21
1C5	OIL PUMP DRIVE GEAR.....	20-23	1C3	PISTON, ENGINE.....	20-21
1C15	OIL PUMP, ENGINE.....	20-30	3D23	PISTON, HIGH RANGE CLUTCH	50-69
3D3	OIL PUMP, TRANSMISSION	50-48	3D21	PISTON, LOW RANGE CLUTCH	50-68
3D19	OIL PUMP, TRANSMISSION CLUTCH.....	50-66	3B13	PISTON, PTO CLUTCH OPERATING (SRT)	50-8
3D11	OIL RETURN CHECK VALVE	50-56	4C24	PISTON, ROCKSHAFT.....	70-42
1C14	OIL SEAL, CRANKSHAFT	20-29	3G23	PISTON, STEERING VALVE	60-1
3D2	OIL SHIELD, PTO DRIVE SHAFT.....	50-47	3B15	PISTON,PTO CLUTCH OPERATING(QRT AND SRT).....	50-10
1B6	OIL, ENGINE	20-1	3F19	PLANET PINION CARRIER	50-118
4G15	OIL, HYDRAULIC AND TRANSMISSION	70-138	3C6	PLANET PINION CARRIER (QUAD-RANGE).....	50-24
5F14	OPERATOR SHIELD	90-110	3F19	PLANETARY AND REAR AXLE	50-118
5C23	OPERATOR'S MANUAL HOLDER (LESS SGB)	90-43	3E6	PLANETARY ASSEMBLY (POWER SHIFT).....	50-77
4H24	ORNAMENT, HOOD.....	80-32	3E5	PLANETARY BRAKE, FIRST (POWER SHIFT)	50-76
3D1	OUTBOARD SHIFTER KIT (SRT).....	50-46	3E2	PLANETARY BRAKE, FOURTH (POWER SHIFT).....	50-73
4F14	OUTLET KIT, HYDRAULIC, AUXILIARY.....	70-112	3E4	PLANETARY BRAKE, SECOND (POWER SHIFT).....	50-75
1C22	OVERFLOW, RADIATOR.....	20-37	3E3	PLANETARY BRAKE, THIRD (POWER SHIFT).....	50-74
4F5	OVERHAUL KIT, BREAKAWAY COUPLER	70-102	3G4	PLANETARY HOUSING.....	50-129
3G14	OVERHAUL KIT, CONTROL VALVE (PFWD)	50-140	3E7	PLANETARY, TRANSMISSION, ASSEMBLED (PST)	50-78
1B21	OVERHAUL KIT, ENGINE	20-17C	3G4	PLATE, BRAKE	50-129
4B17	OVERHAUL KIT, HYDRAULIC PUMP.....	70-12	3I5	PLATE, BRAKE	60-35
4C4	OVERHAUL KIT, HYDRAULIC PUMP.....	70-22	3I4	PLATE, BRAKE FACING	60-34
4F9	OVERHAUL KIT, ISO COUPLER	70-106	3I4	PLATE, BRAKE PRESSURE	60-34
4G8	OVERHAUL KIT, REMOTE CYLINDER	70-132	3D16	PLATE, CLUTCH DRIVE	50-62
4F1	OVERHAUL KIT, SELECTIVE CONTROL VALVE	70-98	3D17	PLATE, CLUTCH DRIVE	50-63
			3C4	PLATE, CLUTCH DRIVE (QRT AND SRT).....	50-22
			4I8	PLATE, GROUND SPEED.....	80-40
			5F1	PLATFORM.....	90-97
			5F2	PLATFORM AND CONSOLE SUPPORT	90-98
			5F1	PLATFORM MAT	90-97
			4G19	POWER FRONT WHEEL DRIVE	80-2
			3G16	POWER FRONT WHEEL DRIVE REPLACEMENT KIT	50-142
			4H2	POWER FRONT WHEEL DRIVE WHEELS	80-11
			4E13	POWER WEIGHT TRANSFER COUPLER	70-85
			4E15	POWER WEIGHT TRANSFER VALVE	70-87
			4C6	PRESSURE CONTROL VALVE OIL PIPES	70-24
			4F13	PRESSURE PIPE, SELECTIVE CONTROL	70-111
			3D11	PRESSURE SWITCH.....	50-56
			2C4	PRESSURE SWITCH (PFWD).....	40-20
			2C5	PRESSURE SWITCH (PFWD).....	40-21
			5B18	PRESSURIZER BLOWER	90-12
			5B20	PRESSURIZER BLOWER, SGB	90-14
			5E9	PRESSURIZER COVER.....	90-78
			5B17	PRESSURIZER FILTERS.....	90-11
			5E3	PRESSURIZER PANEL, ROOF.....	90-72
			3B11	PTO CLUTCH (QRT AND SRT)	50-6
			3E18	PTO CLUTCH CONTROL (POWER SHIFT).....	50-90
			3B21	PTO CLUTCH LEVER (SRT).....	50-16
			3D8	PTO DRIVE GEAR (SYNCRO-RANGE)	50-53

P

1B7	PACKING, LUBRICANT, CYLINDER LINER.....	20-2
1B25	PAN, OIL.....	20-18
5B16	PANEL, AIR LOUVER	90-9
5F12	PANEL, INSTRUMENT.....	90-108
4H22	PANEL, SIDE	80-30
3E10	PARK LOCK, TRANSMISSION (POWER SHIFT).....	50-81
3D14	PEDAL CLUTCH (PST)	50-60
3I13	PEDAL, BRAKE	60-44
3B10	PEDAL, CLUTCH	50-4
3F12	PEDAL, DIFFERENTIAL LOCK VALVE	50-108
2E13	PERFORMANCE TRAK II MINI-MONITOR.....	40-69C
5C21	PERSONAL-POSTURE SEAT	90-40
5D3	PERSONAL-POSTURE SEAT SUSPENSION	90-48
3G6	PFWD BRAKE PISTON SEAL KIT	50-131
3G7	PFWD MANIFOLD AND PIVOT PIN SEAL KIT	50-132
3G1	PFWD WHEEL HUB, MOTOR, AND HOUSING.....	50-126
4E4	PIN, DRAWBAR	70-76
4E8	PIN, DRAWBAR	70-80
4E13	PIN, DRAWBAR	70-85
3E8	PINION, BEVEL, DIFFERENTIAL	50-79

1A22

4630 TRACTOR

ALPHABETICAL INDEX - CONTINUED

GRID		PAGE	GRID		PAGE
3D10	PTO DRIVE GEAR (1000 RPM)	50-55	2B22	RADIO NOISE SUPPRESSION CAPACITOR.....	40-14
3D2	PTO DRIVE SHAFT	50-47	2C1	RADIO NOISE SUPPRESSION CAPACITOR.....	40-17
3F8	PTO DRIVE SHAFT (POWER SHIFT)	50-104	2C2	RADIO NOISE SUPPRESSOR CAPACITOR	40-18
3F9	PTO DRIVE SHAFT (POWER SHIFT)	50-105	2F3	RADIO SPEAKERS	40-83
3D7	PTO DRIVE SHAFT (SYNCRO-RANGE)	50-52	2E21	RADIO, AM (MOTOROLA).....	40-76
3D10	PTO DRIVE SHAFT (1000 RPM)	50-55	2E22	RADIO, AM-FM (MOTOROLA)	40-77
3D2	PTO DRIVE SHAFT OIL SHIELD	50-47	2B9	REAR AND WARNING LAMP	40-2
3F9	PTO GUARD (POWER SHIFT)	50-105	2B11	REAR AND WARNING LAMP	40-4
3D9	PTO GUARD (QRT AND SRT)	50-54	2D13	REAR AND WARNING LAMP	40-48
3D8	PTO GUARD (SYNCRO-RANGE)	50-53	2D15	REAR AND WARNING LAMP	40-50
2C14	PULLEY, ALTERNATOR	40-30	2D17	REAR AND WARNING LAMP	40-52
5B8	PULLEY, COMPRESSOR	90-2	3F19	REAR AXLE HOUSING	50-118
1C4	PULLEY, CRANKSHAFT	20-22	5F15	REAR OPERATOR SHIELD.....	90-111
1C25	PULLEY, FAN.....	20-40	4H7	REAR OUTSIDE WHEEL WEIGHT (52KG(115 LB))	80-16
4B8	PUMP ASSEMBLY, HYDRAULIC, REPLACEMENT.....	70-3	5E25	REAR SLIDING WINDOW	90-96
4B7	PUMP DRIVE COUPLER.....	70-1	3H21	REAR STEERING OIL LINES AND HOSES.....	60-25
1E15	PUMP HOUSING CONNECTORS, FUEL INJECTION.....	30-36	5E24	REAR SUN VISOR.....	90-95
4B21	PUMP REPLACEMENT, HYDRAULIC (PFWD) (4 IN3).....	70-16	5F21	REAR VIEW MIRROR	90-117
4B19	PUMP REPLACEMENT, HYDRAULIC (3 IN3)	70-14	5F22	REAR VIEW MIRROR	90-118
3G9	PUMP SUPPORT, HYDRAULIC (PFWD)	50-134	5F20	REAR VIEW MIRROR, OUTSIDE	90-116
3D20	PUMP, CLUTCH OIL, ASSEMBLY	50-67	4H8	REAR WHEEL INNER WEIGHT (129KG (285 LB))	80-17
1C15	PUMP, ENGINE OIL.....	20-30	4H9	REAR WHEEL INNER WEIGHT (725KG(1600 LB)).....	80-18
1E13	PUMP, FUEL INJECTION (EARLY DESIGN)	30-34	4H6	REAR WHEEL WEIGHT (200KG (440 LB))	80-15
1E20	PUMP, FUEL INJECTION (LATE DESIGN)	30-42	4H4	REAR WHEELS	80-13
1E25	PUMP, FUEL TRANSFER	30-49	2F23	REAR WINDSHIELD WIPER	40-98
4B11	PUMP, HYDRAULIC (PFWD) (4 IN3)	70-6	2F23	REAR WINDSHIELD WIPER MOTOR	40-98
4B9	PUMP, HYDRAULIC (3 IN3)	70-4	4F11	RECEPTACLE, DIAGNOSTIC	70-109
4C16	PUMP, HYDRAULIC, DRAIN LINE	70-34	4E4	REGULAR DRAWBAR	70-76
3D3	PUMP, OIL, TRANSMISSION	50-48	2C10	REGULATOR, ALTERNATOR	40-26
3H13	PUMP, STEERING METERING.....	60-17	2C11	REGULATOR, ALTERNATOR	40-27
3H16	PUMP, STEERING METERING.....	60-19A	2C12	REGULATOR, ALTERNATOR (EARLY DESIGN).....	40-28
3D19	PUMP, TRANSMISSION CLUTCH OIL.....	50-66	2C2	RELAY.....	40-18
1C25	PUMP, WATER.....	20-40	2B20	RELAY (SGB).....	40-12
2F21	PUMP,WINDSHIELD WASHER	40-97A	2B22	RELAY (SGB).....	40-14
2E25	PUSH-BUTTON RADIO AND TAPE PLAYER	40-80	2C1	RELAY ACCESSORY (LESS SGB).....	40-17
3E14	PUSH-PULL CABLES.....	50-86	2D11	RELAY, STARTING CIRCUIT	40-46
			2D12	RELAY, STARTING CIRCUIT	40-47
			2G8	RELAY, SUPPLEMENTARY WIRING	40-106
			2B18	RELAY, WIRING ACCESSORY (SGB)	40-10
			2G1	RELAY, WIRING, ELECTRICAL REMOTE CONTROL.....	40-101
			3G13	RELIEF VALVE.....	50-139
			3D11	RELIEF VALVE, OIL FILTER.....	50-56
			2G1	REMOTE CONTROL CIRCUIT BREAKER	40-101
			2F24	REMOTE CONTROL ELECTRICAL	40-99
			2F25	REMOTE CONTROL KIT, ELECTRICAL	40-100
			2E5	REMOTE CONTROL SPOTLIGHT	40-64
			2G2	REMOTE CONTROL WIRING KIT, ELECTRICAL	40-102
			2G1	REMOTE CONTROL WIRING, ELECTRICAL.....	40-101
			2E1	REMOTE CONTROLLED SPOTLIGHT, ELECTRIC.....	40-60
			4F19	REMOTE CYLINDER	70-118
			4G1	REMOTE CYLINDER (HYDRAULIC STOP)	70-124
			4G6	REMOTE CYLINDER (HYDRAULIC STOP)	70-130
			4G4	REMOTE CYLINDER (MECHANICAL STOP).....	70-128
			4G11	REMOTE CYLINDER CONVERSION KIT.....	70-134
			4F21	REMOTE CYLINDER HOSE IDENTIFICATION KIT.....	70-120
			4G3	REMOTE CYLINDER OVERHAUL KIT	70-127
			4G8	REMOTE CYLINDER OVERHAUL KIT	70-132
			4F23	REMOTE CYLINDER PARTS	70-122
			4B8	REPLACEMENT HYDRAULIC PUMP ASSEMBLY.....	70-3
			3G16	REPLACEMENT KIT (PFWD)	50-142
			3G13	REPLACEMENT RELIEF VALVE	50-139
			5C14	REPLACEMENT ROLL-GARD	90-32
			5D9	REPLACEMENT SOUND-GARD BODY	90-54
			5D9	REPLACEMENT SOUND-GARD BODY (BASIC)	90-54
			3I3	REPLACEMENT STEERING MOTOR.....	60-33
			4C14	RESERVOIR, HYDRAULIC OIL.....	70-32
			5B25	RESISTOR, BLOWER MOTOR	90-19

Q

3C7	QUAD-RANGE CLUTCH (ASSEMBLED)	50-25
3C19	QUADRANT, SPEED CHANGE AND SPEED RANGE	50-37
4D24	QUICK COUPLER	70-70
4H14	QUIK-TATCH FRONT WEIGHTS	80-23
4H15	QUIK-TATCH FRONT WEIGHTS	80-24
4H13	QUIK-TATCH WEIGHTS	80-22

R

2E11	RADAR SENSOR	40-69A
2E11	RADAR SENSOR BRACKET	40-69A
2E11	RADAR SENSOR WIRING HARNESS	40-69A
1C19	RADIATOR	20-34
1C21	RADIATOR BAFFLE KIT	20-36
1C19	RADIATOR CAP	20-34
1C22	RADIATOR OVERFLOW	20-37
2E23	RADIO	40-78
2E19	RADIO (MOTOROLA).....	40-74
2E25	RADIO AND TAPE PLAYER (MOTOROLA)	40-80
2F2	RADIO ANTENNA AND SPEAKERS.....	40-82
2F5	RADIO ANTENNA KIT	40-86
2F7	RADIO HEADPHONES.....	40-88
2E20	RADIO MOUNTING KIT	40-75
2E24	RADIO MOUNTING KIT, CB	40-79
2B20	RADIO NOISE SUPPRESSION CAPACITOR.....	40-12

1A23

4630 TRACTOR

ALPHABETICAL INDEX - CONTINUED

GRID		PAGE	GRID		PAGE
3F7	RETURN PORT COVER	50-103	5C4	SEAT BELT (ROLL-GARD)	90-23
3C13	REVERSE SHIFTER SHAFT	50-31	5C5	SEAT BELT (W/O HI CROP).....	90-23A
3C14	REVERSE SHIFTER SHAFT	50-32	5C16	SEAT CUSHION	90-34
4H4	RIM, DEMOUNTABLE	80-13	5C21	SEAT CUSHION	90-40
4H4	RIM, VALVE STEM	80-13	5D2	SEAT SUPPORT	90-47
1C3	RINGS, PISTON	20-21	5C17	SEAT SUPPORT, DELUXE	90-36
1B10	ROCKER ARM COVER	20-8	5C19	SEAT SUSPENSION, DELUXE	90-38
1B12	ROCKER ARMS	20-10	5D3	SEAT SUSPENSION, PERSONAL-POSTURE	90-48
4C24	ROCKSHAFT	70-42	5C16	SEAT, DELUXE	90-34
5F10	ROCKSHAFT CONSOLE	90-106	3E4	SECOND PLANETARY BRAKE (POWER SHIFT)	50-75
4D1	ROCKSHAFT CONTROL STABILIZER KIT (SGB).....	70-44	4F16	SELECTIVE CONTROL LEVERS AND LINKAGE	70-114
4D1	ROCKSHAFT CONTROL VALVE HOUSING	70-44	4F13	SELECTIVE CONTROL PRESSURE PIPE.....	70-111
4D3	ROCKSHAFT CONTROL VALVE HOUSING	70-46	4E20	SELECTIVE CONTROL VALVE.....	70-92
4D10	ROCKSHAFT CONTROL VALVE LEVER.....	70-54	4E22	SELECTIVE CONTROL VALVE.....	70-94
4D10	ROCKSHAFT CONTROL VALVE LINKAGE	70-54	4E24	SELECTIVE CONTROL VALVE.....	70-96
4C20	ROCKSHAFT HOUSING	70-38	4E20	SELECTIVE CONTROL VALVE HOUSING	70-92
4C22	ROCKSHAFT HOUSING	70-40	4F2	SELECTIVE CONTROL VALVE HOUSING	70-99
4C20	ROCKSHAFT HOUSING COVER	70-38	4F3	SELECTIVE CONTROL VALVE HOUSING	70-100
4C22	ROCKSHAFT HOUSING COVER	70-40	4E25	SELECTIVE CONTROL VALVE KIT	70-97
4C24	ROCKSHAFT LIFT ARMS	70-42	4F1	SELECTIVE CONTROL VALVE OVERHAUL KIT.....	70-98
4D8	ROCKSHAFT LINKAGE AND CONTROL	70-52	4D16	SELECTIVE CONTROL VALVE SUPPORT	70-60
4C24	ROCKSHAFT PISTON	70-42	4D17	SELECTIVE CONTROL VALVE SUPPORT	70-62
4C25	ROCKSHAFT PISTON COVER	70-43	1B15	SENDER, ENGINE OIL PRESSURE	20-14
4C25	ROCKSHAFT THROTTLE VALVE.....	70-43	1B9	SENDER, TEMPERATURE GAUGE	20-6
3D14	ROD, CLUTCH OPERATING (PST)	50-60	3E19	SENDER, TEMPERATURE GAUGE	50-91
3D1	ROD, SHIFTER ARM	50-46	3E20	SENDER, TEMPERATURE GAUGE	50-92
4G22	ROD, TIE	80-6	2E11	SENSOR, RADAR	40-69A
1C3	RODS, CONNECTING	20-21	1E12	SEPARATOR, WATER.....	30-33
3C23	RODS, SHIFTER CONTROL (QUAD-RANGE).....	50-42	4H24	SERIES LABEL.....	80-32
3C18	RODS, SHIFTER CONTROL (SYNCRO-RANGE)	50-36	5D24	SERVICE DOOR, SOUND-GARD BODY	90-69
3C17	RODS, TRANSMISSION SHIFTER CONTROL.....	50-35	2B25	SERVICE WIRE RESISTANCE KIT	40-16
3C22	RODS, TRANSMISSION SHIFTER CONTROL.....	50-41	3D16	SHAFT, CLUTCH (POWER SHIFT)	50-62
5C10	ROLL-GARD	90-28	3D17	SHAFT, CLUTCH (POWER SHIFT)	50-63
5C5	ROLL-GARD (W/O HI CROP)	90-23A	3D19	SHAFT, CLUTCH (POWER SHIFT)	50-66
5C12	ROLL-GARD CANOPY, FOUR-POST	90-30	3D21	SHAFT, CLUTCH (POWER SHIFT)	50-68
5C7	ROLL-GARD CANOPY, TWO-POST	90-24	3B15	SHAFT, CLUTCH (QRT AND SRT).....	50-10
5C10	ROLL-GARD FENDER	90-28	3B13	SHAFT, CLUTCH (SYNCRO-RANGE)	50-8
2D15	ROLL-GARD LAMPS	40-50	4E3	SHAFT, LOAD CONTROL	70-75
5C9	ROLL-GARD MOUNTING, FOUR-POST.....	90-27	3F19	SHAFT, PLANET PINION.....	50-118
5C14	ROLL-GARD WITH CANOPY (REPLACEMENT)	90-32	3D2	SHAFT, PTO DRIVE.....	50-47
5C4	ROLL-GARD, TWO-POST	90-23	3F8	SHAFT, PTO DRIVE (POWER SHIFT)	50-104
5C14	ROLL-GARD, 4-POST (REPLACEMENT)	90-32	3D7	SHAFT, PTO DRIVE (SYNCRO-RANGE)	50-52
5E3	ROOF PRESSURIZER PANEL	90-72	3D10	SHAFT, PTO DRIVE (1000 RPM)	50-55
5E3	ROOF, INNER, SOUND-GARD BODY	90-72	3F19	SHAFT, REAR AXLE	50-118
5E1	ROOF, SOUND-GARD BODY	90-70	3C15	SHAFT, SHIFTER	50-33
5E5	ROOF, SOUND-GARD BODY	90-74	3D1	SHAFT, SHIFTER CAM	50-46
5E7	ROOF, SOUND-GARD BODY INNER.....	90-76	3H3	SHAFT, STEERING	60-6
2C6	ROTARY SWITCHES AND BRACKETS (PFWD).....	40-22	3H4	SHAFT, STEERING	60-7
2C8	ROTARY SWITCHES AND BRACKETS (PFWD).....	40-24	3H12	SHAFT, STEERING	60-16
			3H16	SHAFT, STEERING	60-19A
			3C4	SHAFT, TRANSMISSION DRIVE (QRT AND SRT)	50-22
			3F9	SHAFT, 1000 RPM PTO (POWER SHIFT).....	50-105
			3D8	SHAFT, 1000 RPM PTO (SYNCRO-RANGE).....	50-53
			3C13	SHAFTS, SHIFTER	50-31
			3C14	SHAFTS, SHIFTER	50-32
			3C16	SHAFTS, TRANSMISSION SHIFTER	50-34
			3B19	SHIELD, CLUTCH VALVES (QRT AND SRT)	50-14
			3F23	SHIELD, HYDRAULIC LINE	50-122
			3F1	SHIELD, NEUTRAL START SWITCH	50-96
			5F14	SHIELD, OPERATOR.....	90-110
			3F9	SHIELD, PTO MASTER	50-105
			3D9	SHIELD, PTO MASTER (QRT AND SRT)	50-54
			3D8	SHIELD, PTO MASTER (SYNCRO-RANGE)	50-53
			5F15	SHIELD, REAR OPERATOR	90-111
			4H22	SHIELD, SIDE.....	80-30
			2C5	SHIELD, SWITCH (PFWD)	40-21
			3F2	SHIFT VALVE, TRANSMISSION (PST).....	50-97

S

4D23	SAFETY CHAIN, IMPLEMENT	70-69
4C22	SCV CONTROL LEVER STABILIZER KIT	70-40
4D14	SCV CONTROL VALVE LEVER STABILIZER KIT.....	70-58
1C14	SEAL, CRANKSHAFT OIL (REAR)	20-29
1C13	SEAL, FRONT OIL	20-28
5F17	SEALANT, LOCTITE.....	90-113
2D10	SEALING KIT, STARTING MOTOR	40-45F
5C24	SEAT ARMREST (PERSONAL-POSTURE SEAT)	90-44
5C16	SEAT BACK	90-34
5C16	SEAT BACK CUSHION	90-34
5C21	SEAT BACKREST	90-40
5D1	SEAT BACKREST SUPPORTS.....	90-46
5C16	SEAT BELT (DELUXE SEAT)	90-34
5C21	SEAT BELT (PERSONAL-POSTURE SEAT)	90-40

1A24

4630 TRACTOR

ALPHABETICAL INDEX - CONTINUED

<i>GRID</i>		<i>PAGE</i>	<i>GRID</i>		<i>PAGE</i>
3D1	SHIFTER ARM	50-46	5B17	SOUND-GARD BODY PRESSURIZER FILTERS	90-11
3D1	SHIFTER ARM ROD	50-46	5E1	SOUND-GARD BODY ROOF.....	90-70
3D1	SHIFTER CAM SHAFT.....	50-46	5E5	SOUND-GARD BODY ROOF.....	90-74
3D1	SHIFTER CAM SHAFT SUPPORT	50-46	5D24	SOUND-GARD BODY SERVICE DOOR.....	90-69
3C23	SHIFTER CONTROL RODS (QUAD-RANGE)	50-42	5F9	SOUND-GARD BODY SHIFTER BOOT	90-105
3C18	SHIFTER CONTROL RODS (SYNCRO-RANGE)	50-36	5E18	SOUND-GARD BODY UPHOLSTERY	90-89
3C15	SHIFTER SHAFT	50-33	5E19	SOUND-GARD BODY UPHOLSTERY	90-90
3C13	SHIFTER SHAFTS	50-31	5E21	SOUND-GARD BODY UPHOLSTERY	90-92
3C14	SHIFTER SHAFTS	50-32	5E23	SOUND-GARD BODY UPHOLSTERY KIT (BLACK)	90-94
3C16	SHIFTER SHAFTS	50-34	2F10	SOUND-GARD BODY WINDSHIELD WIPER (R.H.)	40-92
3E11	SHIFTER, TRANSMISSION DISCONNECT	50-82	2B13	SOUND-GARD BODY WIRING (REPLACEMENT SGB OR REPLACEMENT INNER ROOF).....	40-6
1C3	SHIM, LINER	20-21	5D11	SOUND-GARD MOUNTING, REPLACEMENT	90-56
5C19	SHOCK ABSORBER, SEAT.....	90-38	2F3	SPEAKER, RADIO	40-83
5D3	SHOCK ABSORBER, SEAT.....	90-48	2F2	SPEAKERS, KIT	40-82
1B17	SHORT BLOCK, ENGINE (WITH OIL PUMP)	20-16	3C15	SPEED CHANGE ARM	50-33
1B19	SHORT BLOCK, ENGINE (WITHOUT OIL PUMP)	20-17A	1F5	SPEED CONTROL LINKAGE	30-54
1C19	SHROUD, FAN	20-34	1F9	SPEED CONTROL, FOOT.....	30-58
1F4	SHUT-OFF, FUEL.....	30-53	3C13	SPEED RANGE ARM.....	50-31
4H11	SIDE FRAME	80-20	3C14	SPEED RANGE ARM.....	50-32
4H22	SIDE PANEL.....	80-30	3C25	SPEED SELECTOR LEVER	50-44
5E24	SIDE SUN VISOR	90-95	3C25	SPEED SELECTOR STOP	50-44
5E25	SLIDING WINDOW, REAR	90-96	5F12	SPEED-HOUR METER.....	90-108
5F19	SLOW MOVING VEHICLE EMBLEM.....	90-115	5F12	SPEED-HOUR METER CABLE	90-108
2G4	SOCKET, ELECTRICAL OUTLET	40-104	2E3	SPOTLIGHT INSTALLATION KIT	40-62
2G5	SOCKET, ELECTRICAL OUTLET, 7-TERMINAL	40-105	2E1	SPOTLIGHT, ELECTRIC REMOTE CONTROLLED	40-60
2C18	SOLENOID SWITCH (DELCO-REMY)	40-34	2E5	SPOTLIGHT, REMOTE CONTROL	40-64
2C22	SOLENOID SWITCH (DELCO-REMY)	40-38	1D10	STACK, AIR	30-5
2D3	SOLENOID SWITCH, STARTER	40-44	2C16	STARTER	40-32
2D8	SOLENOID SWITCH, STARTER (JOHN DEERE)	40-45D	2C18	STARTER (DELCO-REMY)	40-34
2D9	SOLENOID SWITCH, STARTER (JOHN DEERE)	40-45E	2C20	STARTER (DELCO-REMY)	40-36
4C3	SOLENOID, DESTROKE (ELECTRIC)	70-21A	2D5	STARTER ARMATURE (JOHN DEERE) (DIESEL).....	40-45A
3G12	SOLENOID, POWER FRONT WHEEL DRIVE	50-138	2D6	STARTER COIL (JOHN DEERE) (DIESEL).....	40-45B
1E1	SOLENOID, STARTING AID	30-22	2D7	STARTER COMMUTATOR END FRAME (JOHN DEERE) (DIESEL)	40-45C
5D5	SOUND-GARD BODY	90-50	2C23	STARTER DRIVE HOUSING (DELCO-REMY)	40-40
5D9	SOUND-GARD BODY (REPLACEMENT)	90-54	2D5	STARTER DRIVE HOUSING (JOHN DEERE) (DIESEL).....	40-45A
5B15	SOUND-GARD BODY AIR LOUVER.....	90-8	2C23	STARTER GEAR (DELCO-REMY)	40-40
5B16	SOUND-GARD BODY AIR LOUVER PANEL	90-9	2D1	STARTER MAIN FRAME (DELCO-REMY)	40-42
5F4	SOUND-GARD BODY ASH TRAY.....	90-100	2D6	STARTER MAIN FRAME (JOHN DEERE) (DIESEL).....	40-45B
5F5	SOUND-GARD BODY ASH TRAY.....	90-101	1C4	STARTER RING GEAR	20-22
5E9	SOUND-GARD BODY COVER AND HEADLINER	90-78	2D4	STARTER SOLENOID COVER (JOHN DEERE)	40-45
5D17	SOUND-GARD BODY DOOR HANDLE	90-62	2C17	STARTER SOLENOID COVER KIT (DELCO-REMY).....	40-33
5D21	SOUND-GARD BODY DOOR HANDLE (LATE DESIGN).....	90-66	2D3	STARTER SOLENOID SWITCH	40-44
5D15	SOUND-GARD BODY DOOR KITS.....	90-60	2D8	STARTER SOLENOID SWITCH (JOHN DEERE).....	40-45D
5D13	SOUND-GARD BODY DOORS	90-58	2D9	STARTER SOLENOID SWITCH (JOHN DEERE).....	40-45E
5B16	SOUND-GARD BODY ENVIRONMENT CONTROLS.....	90-9	1D25	STARTING AID KIT, ETHER	30-21
5E16	SOUND-GARD BODY GLASS.....	90-86	1E1	STARTING AID SOLENOID.....	30-22
5E14	SOUND-GARD BODY GLASS SEALS	90-84	1E2	STARTING AID TUBE KIT.....	30-23
5E11	SOUND-GARD BODY HEADLINER	90-81	2B15	STARTING AID WIRING KIT	40-7A
5C1	SOUND-GARD BODY HEATER AND HOSES	90-20	2D11	STARTING CIRCUIT RELAY	40-46
5E3	SOUND-GARD BODY INNER ROOF	90-72	2D12	STARTING CIRCUIT RELAY	40-47
5E7	SOUND-GARD BODY INNER ROOF	90-76	1D24	STARTING FLUID.....	30-20
2B11	SOUND-GARD BODY LAMPS.....	40-4	1E1	STARTING FLUID.....	30-22
2D17	SOUND-GARD BODY LAMPS.....	40-52	1E2	STARTING FLUID TUBE KIT	30-23
5F1	SOUND-GARD BODY MAT, FLOOR.....	90-97	1F2	STARTING FUEL CONTROL KIT	30-51
5E12	SOUND-GARD BODY METAL TRIM.....	90-82	1F3	STARTING FUEL CONTROL KIT	30-52
5F22	SOUND-GARD BODY MIRROR, REAR VIEW	90-118	2C16	STARTING MOTOR	40-32
5E12	SOUND-GARD BODY MOLDING	90-82	2C18	STARTING MOTOR (DELCO-REMY)	40-34
5E14	SOUND-GARD BODY MOLDING	90-84	2D10	STARTING MOTOR SEAL KIT	40-45F
5E16	SOUND-GARD BODY MOLDING, STRAPS, LATCHES	90-86	1E1	STARTING, COLD WEATHER, AID (ELECTRIC).....	30-22
5D7	SOUND-GARD BODY MOUNTS	90-52	1D24	STARTING, COLD WEATHER, AID (MANUAL)	30-20
5B15	SOUND-GARD BODY PANEL, CONTROL.....	90-8	4G22	STEERING ARM.....	80-6
5B18	SOUND-GARD BODY PRESSURIZER BLOWER	90-12			
5B20	SOUND-GARD BODY PRESSURIZER BLOWER	90-14			
5B22	SOUND-GARD BODY PRESSURIZER BLOWER	90-16			

1B1

4630 TRACTOR

ALPHABETICAL INDEX - CONTINUED

GRID	PAGE	GRID	PAGE
2C4	TOGGLE SWITCH (PFWD)		40-20
2C5	TOGGLE SWITCH (PFWD)		40-21
5F18	TOOL BOX		90-114
5F16	TOOLS		90-112
3D16	TORSIONAL DAMPER.....		50-62
3D17	TORSIONAL DAMPER.....		50-63
1E25	TRANSFER PUMP, FUEL		30-49
3B11	TRANSMISSION (QRT AND SRT)		50-6
3C4	TRANSMISSION BLOCKERS (QRT AND SRT).....		50-22
3D24	TRANSMISSION CASE (POWER SHIFT).....		50-70
3B23	TRANSMISSION CASE (QRT AND SRT).....		50-18
3B24	TRANSMISSION CASE COVER (FRONT)		50-19
3D25	TRANSMISSION CASE COVER (FRONT)		50-71
3D19	TRANSMISSION CLUTCH OIL PUMP		50-66
3D21	TRANSMISSION CLUTCH PACK (POWER SHIFT).....		50-68
3D23	TRANSMISSION CLUTCH PACK (POWER SHIFT).....		50-69
3E19	TRANSMISSION CLUTCH REGULATING VALVE		50-91
3E20	TRANSMISSION CLUTCH REGULATING VALVE		50-92
3E16	TRANSMISSION CLUTCH VALVE (POWER SHIFT).....		50-88
3E14	TRANSMISSION CONTROL CABLES		50-86
3F6	TRANSMISSION CONTROL OIL PIPES		50-102
3E22	TRANSMISSION CONTROL VALVE (POWER SHIFT)		50-94
3E24	TRANSMISSION CONTROL VALVE KIT		50-95A
3C1	TRANSMISSION COUNTERSHAFT		50-21
3E8	TRANSMISSION DIFFERENTIAL DRIVE		50-79
3E11	TRANSMISSION DISCONNECT SHIFTER		50-82
3E1	TRANSMISSION GASKET KIT		50-72
3E9	TRANSMISSION GEAR REDUCTION.....		50-80
3E9	TRANSMISSION IDLER GEAR AND SHAFT		50-80
4G15	TRANSMISSION OIL		70-138
3D6	TRANSMISSION OIL HEATER		50-51
3D3	TRANSMISSION OIL PUMP		50-48
3E10	TRANSMISSION PARK LOCK (POWER SHIFT)		50-81
3E7	TRANSMISSION PLANETARY, ASSEMBLED (PST).....		50-78
4D12	TRANSMISSION REAR COVER		70-56
4D14	TRANSMISSION REAR COVER		70-58
3C19	TRANSMISSION SHIFTER CONTROL		50-37
3E12	TRANSMISSION SHIFTER CONTROL		50-84
3F2	TRANSMISSION SHIFTER VALVE (PST)		50-97
3C20	TRANSMISSION SHIFTER CONTROL		50-38
3C17	TRANSMISSION SHIFTER CONTROL RODS		50-35
3C18	TRANSMISSION SHIFTER CONTROL RODS		50-36
3C22	TRANSMISSION SHIFTER CONTROL RODS		50-41
3C23	TRANSMISSION SHIFTER CONTROL RODS		50-42
3C4	TRANSMISSION SYNCHRONIZER DISK (QRT AND SRT)		50-22
4C20	TUBE, OIL FILLER		70-38
1B10	TUBE, VENTILATOR		20-8
1D16	TURBOCHARGER (AIRESEARCH).....		30-12
1D18	TURBOCHARGER (SCHWITZER) (EARLY DESIGN).....		30-14
1D20	TURBOCHARGER (SCHWITZER) (LATE DESIGN)		30-16
1D17	TURBOCHARGER CENTER HOUSING (AIRESEARCH)		30-13
1D19	TURBOCHARGER CENTER HOUSING (EARLY DESIGN).....		30-15
1D21	TURBOCHARGER CENTER HOUSING (LATE DESIGN)		30-17
1D14	TURBOCHARGER OIL LINES.....		30-10
2D22	TURN SIGNAL CONTROL.....		40-57
2D22	TURN SIGNAL KIT.....		40-57
2D21	TURN SIGNAL LAMPS		40-56
		U	
1C2	UNDERHAUL KIT, ENGINE (6404) (STD BRGS).....		20-20
1C6	UNDERSIZE CONNECTING ROD JOURNAL CRANKSHAFT KIT (EARLY DESIGN)		20-24
1C7	UNDERSIZE CRANKSHAFT KIT (CONNECTING ROD JOURNAL) (LATE DESIGN)		20-24A
1C8	UNDERSIZE MAIN BEARING CRANKSHAFT (EARLIEST DESIGN).....		20-25
1C9	UNDERSIZE MAIN BEARING CRANKSHAFT AND BEARING KIT (EARLY DESIGN)		20-25A
1C10	UNDERSIZE MAIN BEARING CRANKSHAFT AND BEARING KIT (LATE DESIGN).....		20-25B
1D8	UNLOADER VALVE		30-2
5E18	UPHOLSTERY, SOUND-GARD BODY		90-89
5E19	UPHOLSTERY, SOUND-GARD BODY		90-90
5E21	UPHOLSTERY, SOUND-GARD BODY		90-92
		V	
1D11	VACUUM SWITCH INDICATOR		30-6
1D8	VACUUM SWITCH KIT		30-2
1D11	VACUUM SWITCH, REMOTE		30-6
3H19	VALVE BODY, STEERING		60-22
3B15	VALVE LUBE REDUCTION (QRT AND SRT)		50-10
1B9	VALVE SEAT INSERTS		20-6
1B7	VALVE STEM LUBRICANT, ENGINE		20-2
4H4	VALVE STEM, RIM		80-13
3G10	VALVE, BLEED CHECK (PFWD)		50-136
3I10	VALVE, BRAKE		60-40
3B19	VALVE, CLUTCH HOUSING (QRT AND SRT).....		50-14
3B17	VALVE, CLUTCH OIL PRESSURE REGULATING.....		50-12
4D1	VALVE, CONTROL.....		70-44
4D3	VALVE, CONTROL.....		70-46
3F10	VALVE, DIFFERENTIAL LOCK		50-106
4D3	VALVE, DIRECTIONAL		70-46
4E18	VALVE, DIRECTIONAL CONTROL		70-90
4E19	VALVE, DIRECTIONAL CONTROL		70-91
3G10	VALVE, DIRECTIONAL CONTROL (PFWD).....		50-136
4D1	VALVE, FLOW CONTROL.....		70-44
4D3	VALVE, FLOW CONTROL.....		70-46
4E20	VALVE, FLOW CONTROL, SCV		70-92
1E10	VALVE, FUEL CHECK		30-31
4C11	VALVE, HYDRAULIC THERMOSTAT BYPASS		70-29
3B13	VALVE, LUBE REDUCTION (SRT)		50-8
4E20	VALVE, METERING, SCV		70-92
1C15	VALVE, OIL COOLER BYPASS		20-30
3D11	VALVE, OIL FILTER RELIEF		50-56
3D11	VALVE, OIL RETURN CHECK		50-56
4E15	VALVE, POWER WEIGHT TRANSFER		70-87
4C6	VALVE, PRESSURE CONTROL		70-24
3G10	VALVE, REGENERATIVE CHECK (PFWD)		50-136
3G13	VALVE, RELIEF		50-139
4C25	VALVE, ROCKSHAFT THROTTLE		70-43
4E20	VALVE, SELECTIVE CONTROL		70-92
4E22	VALVE, SELECTIVE CONTROL		70-94
4E24	VALVE, SELECTIVE CONTROL		70-96
4E25	VALVE, SELECTIVE CONTROL		70-97
4F2	VALVE, SELECTIVE CONTROL		70-99
4F3	VALVE, SELECTIVE CONTROL		70-100
5B11	VALVE, SERVICE, AIR CONDITIONING		90-5
3F2	VALVE, SHIFT (PST)		50-97
3G25	VALVE, STEERING		60-3
3H1	VALVE, STEERING		60-4
3H18	VALVE, STEERING		60-20

1B2

4630 TRACTOR

ALPHABETICAL INDEX - CONTINUED

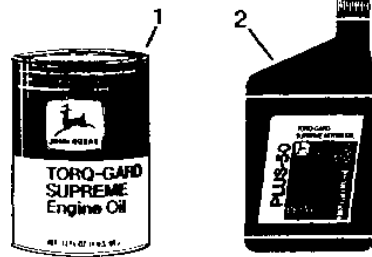
GRID		PAGE	GRID		PAGE
3E16	VALVE, TRANSMISSION CLUTCH (POWER SHIFT)	50-88	5B16	WIPER SWITCH	90-9
3E19	VALVE, TRANSMISSION CLUTCH REGULATING	50-91	2F8	WIPER, WINDSHIELD	40-90
3E20	VALVE, TRANSMISSION CLUTCH REGULATING	50-92	2F12	WIPER, WINDSHIELD, (R.H.)	40-93A
3E22	VALVE, TRANSMISSION CONTROL	50-94	2F23	WIPER,REAR WINDSHIELD	40-98
1D8	VALVE, UNLOADER.....	30-2	2B25	WIRE RESISTANCE SERVICE KIT	40-16
1B12	VALVES, EXHAUST.....	20-10	2B18	WIRING ACCESSORY RELAY (SGB)	40-10
1B12	VALVES, INTAKE.....	20-10	2B19	WIRING ACCESSORY RELAY KIT (SGB)	40-11
1B10	VENTILATOR TUBE.....	20-8	2B9	WIRING HARNESS	40-2
5E24	VISOR, SUN.....	90-95	2B11	WIRING HARNESS (ROLL-GARD AND SOUND-GARD BODY).....	40-4
W			2B15	WIRING HARNESS, ETHER SOLENOID	40-7A
2B9	WARNING LAMP	40-2	2B15	WIRING HARNESS, ETHER SWITCH	40-7A
2B11	WARNING LAMP	40-4	2F14	WIRING HARNESS, WINDSHIELD WIPER	40-93C
2D13	WARNING LAMP	40-48	2F16	WIRING HARNESS, WINDSHIELD WIPER	40-93E
2D15	WARNING LAMP	40-50	2E11	WIRING HARNESS,RADAR SENSOR	40-69A
2D17	WARNING LAMP	40-52	2G2	WIRING KIT, ELECTRICAL REMOTE CONTROL	40-102
2D21	WARNING LAMP	40-56	5D7	WIRING LEAD, GROUND, SOUND-GARD BODY	90-52
2D20	WARNING LAMP (LESS RG OR SGB)	40-55	2B8	WIRING, AIR COMPRESSOR	40-1
2C1	WARNING LAMP FLASHER (LESS SGB)	40-17	2G1	WIRING, ELECTRICAL REMOTE CONTROL.....	40-101
2B20	WARNING LAMP FLASHER (SGB)	40-12	2B13	WIRING, SOUND-GARD BODY (REPLACEMENT SGB OR REPLACEMENT INNER ROOF).....	40-6
2B22	WARNING LAMP FLASHER (SGB)	40-14	2G8	WIRING, SUPPLEMENTARY	40-106
2G6	WARNING LAMP KIT, FLASHING	40-105A			
1D1	WATER MANIFOLD	20-41			
1D1	WATER MANIFOLD GASKET	20-41			
1C25	WATER PUMP	20-40			
1C25	WATER PUMP GASKET	20-40			
1E11	WATER SEPARATOR	30-32			
1E12	WATER SEPARATOR	30-33			
2E9	WATER TEMPERATURE GAUGE.....	40-68			
4H10	WEIGHT, DOUBLE FRONT	80-19			
4H6	WEIGHT, REAR WHEEL (200KG (440 LB)).....	80-15			
4H7	WEIGHT,REAR OUTSIDE WHEEL (52KG(115 LB))	80-16			
4H8	WEIGHT,REAR WHEEL INNER (129KG (285 LB))	80-17			
4H9	WEIGHT,REAR WHEEL INNER (725KG(1600 LB)).....	80-18			
4H13	WEIGHTS, FRONT.....	80-22			
4H14	WEIGHTS, QUIK-TATCH FRONT	80-23			
4H15	WEIGHTS, QUIK-TATCH FRONT	80-24			
3F24	WHEEL MANIFOLD (POWER FRONT WHEEL DRIVE)	50-123			
3G1	WHEEL, HUB, MOTOR, AND HOUSING (PFWD)	50-126			
4H4	WHEEL, REAR	80-13			
3H3	WHEEL, STEERING.....	60-6			
3H4	WHEEL, STEERING.....	60-7			
3H12	WHEEL, STEERING.....	60-16			
3H14	WHEEL, STEERING.....	60-18			
4H2	WHEELS (PFWD).....	80-11			
4H5	WHEELS, DUAL REAR	80-14			
4H1	WHEELS, FRONT.....	80-10			
4E8	WIDE SWING DRAWBAR	70-80			
5E25	WINDOW, REAR SLIDING	90-96			
5E16	WINDOWS, SOUND-GARD BODY	90-86			
2F21	WINDSHIELD WASHER.....	40-97A			
2F21	WINDSHIELD WASHER PUMP.....	40-97A			
2F8	WINDSHIELD WIPER AND MOTOR	40-90			
2F14	WINDSHIELD WIPER ARM	40-93C			
2F16	WINDSHIELD WIPER ARM	40-93E			
2F14	WINDSHIELD WIPER BLADE	40-93C			
2F16	WINDSHIELD WIPER BLADE	40-93E			
2F14	WINDSHIELD WIPER MOTOR	40-93C			
2F16	WINDSHIELD WIPER MOTOR	40-93E			
2F10	WINDSHIELD WIPER MOTOR (R.H.).....	40-92			
2F14	WINDSHIELD WIPER WIRING HARNESS.....	40-93C			
2F16	WINDSHIELD WIPER WIRING HARNESS.....	40-93E			
2F12	WINDSHIELD WIPER, (R.H.).....	40-93A			
2F23	WINDSHIELD WIPER,REAR	40-98			
2F18	WIPER MOTOR SUPPRESSION KIT	40-94			

1B6

ENGINE

RGP3291 -UN-01JAN94

TORQ-GARD SUPREME AND PLUS-50 ENGINE OIL



RGP 3291

KEY	PART NO.	PART NAME	QTY	ENGINE SERIAL NO.	REMARKS
1	TY6359	OIL	1	(SAE 5W/30), 0.9L (1 QUART) CAN	
	TY6360	OIL	1	(SAE 5W/30), 19L (5 GALLON) CAN	
	TY6361	OIL	1	(SAE 5W/30), 208L (55 GALLON) DRUM	
	TY6364	OIL	1	(SAE 10W/30), 0.9 L (1 QUART) (BREAKIN)	
	TY6297	OIL	1	(SAE 15W/40), 0.9L (1 QUART) CAN	
	TY6298	OIL	1	(SAE 15W/40), 19L (5 GALLON) CAN	
	TY6300	OIL	1	(SAE 15W/40), 114L (30 GALLON) DRUM	
	TY6301	OIL	1	(SAE 15W/40), 208L (55 GALLON) DRUM	
	TY6311	OIL	1	(SAE 10W), 0.9L (1 QUART) CAN	
	TY6312	OIL	1	(SAE 10W), 19L (5 GALLON) CAN	
	TY6313	OIL	1	(SAE 10W), 208L (55 GALLON) DRUM	
	AR63979	OIL	1	(SAE 30), 0.2L (1 HALF PINT) CAN	
	AR63218	OIL	1	(SAE 30), 0.9L (1 QUART) CAN	
	AR63219	OIL	1	(SAE 30), 19L (5 GALLON) CAN	
TY6280	OIL	1	(SAE 30), 114L (30 GALLON) DRUM		
2	AR63222	OIL	1	(SAE 30), 208L (55 GALLON) DRUM	
	TY6389	OIL	1	(SAE 15W/40), 0.9L (1 QUART)	
	TY6390	OIL	1	(SAE 15W/40), 19L (5 GALLON)	
	TY6391	OIL	1	(SAE 15W/40), 208L (55 GALLON)	
	TY6392	OIL	1	(SAE 30), 0.9L (1 QUART)	
	TY6393	OIL	1	(SAE 30), 19L (5 GALLON)	
	TY6394	OIL	1	(SAE 30), 208L (55 GALLON)	

KIT FOR OFF-SEASON STORAGE (NOT ILLUSTRATED)

KEY	PART NO.	PART NAME	QTY	ENGINE SERIAL NO.	REMARKS
..	AR41785	KIT	1		CONTAINS 0.9 L (1 QT.) CAN OF INTERNAL CORROSION INHIBITOR, 1 ROLL OF TAPE, AND 6 PLASTIC BAGS
..	AR41870	RUST INHIBITOR	1		0.9 L (1 QT.) CAN, (SUB AR41785)

DUST CAP / COVER KIT (NOT ILLUSTRATED)

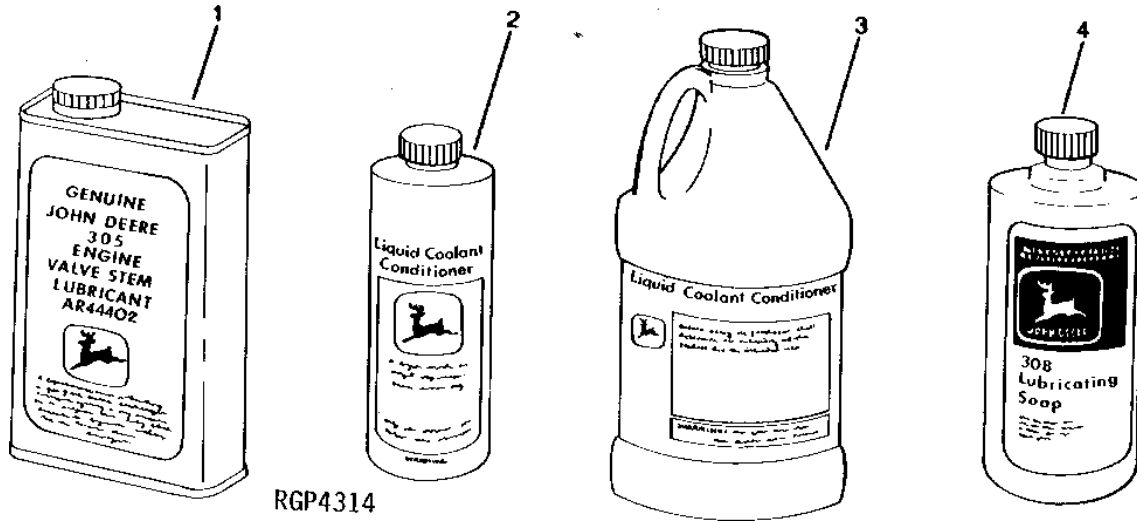
KEY	PART NO.	PART NAME	QTY	ENGINE SERIAL NO.	REMARKS
..	AR21969	KIT	1		

1B7

ENGINE

RGP4314 -UN-01JAN94

COOLANT CONDITIONER AND ENGINE PART LUBRICANTS



VALVE STEM LUBRICANT

KEY	PART NO.	PART NAME	QTY	SERIAL NO.	REMARKS
1	AR44402	OIL	1		.946ML (32 OZ.)

COOLANT CONDITIONER

KEY	PART NO.	PART NAME	QTY	SERIAL NO.	REMARKS
2	RE23182	ENGINE COOLANT CONDITIONER	1		0.473 L (16 OZ.) (PHOSPHATE - FREE) (SUB FOR T19566 OR RE12842) (SUB TY16004)
	TY16004	ENGINE COOLANT CONDITIONER	1		0.472 L (16 OZ.)
3	RE35992	ENGINE COOLANT CONDITIONER	1		3.8 L (1 GAL.) (PHOSPHATE - FREE) (SUB TY16005)
..	TY16005	ENGINE COOLANT CONDITIONER	1		1.9 L (1/2 GAL.)

CYLINDER LINER PACKING LUBRICANT

KEY	PART NO.	PART NAME	QTY	ENGINE SERIAL NO.	REMARKS
4	AR54749	LUBRICANT	1		0.9L(1 QT.)

MEMORANDA

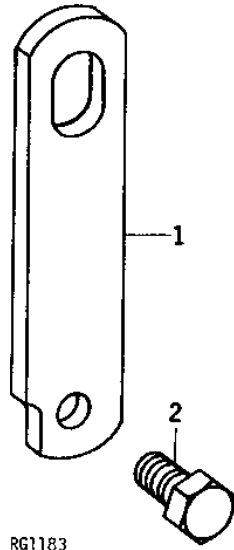
MEMORANDA

1B8

ENGINE

RG1183 -UN-01JAN94

LIFT STRAPS



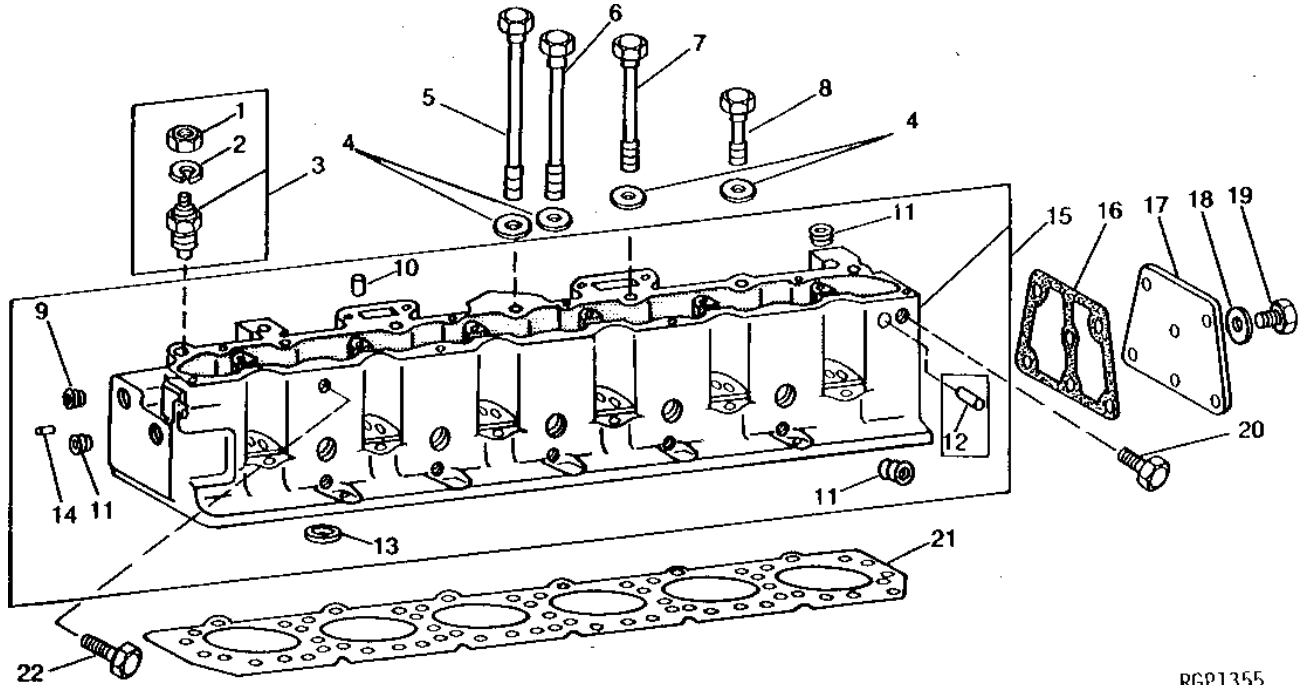
KEY	PART NO.	PART NAME	QTY	ENGINE SERIAL NO.	REMARKS
1	R61497	STRAP	2		
2	R45693	CAP SCREW	2		

1B9

ENGINE

RGP1355 -UN-01JAN94

CYLINDER HEAD AND GASKET



RGP1355

KEY	PART NO.	PART NAME	QTY	ENGINE SERIAL NO.	REMARKS
1	14H631	NUT	1	0.190"	
2	12H295	LOCK WASHER	1	0.190"	
3	AR58233	SENSOR	1		
4	R76126	WASHER	26		(SUB FOR R42364) (USE WITH R62418, R62419, R62420 OR R62421 ONLY, APPL)
5	R62420	SCREW	7		(SUB FOR R45194) (SUB R88045)
6	R62419	SCREW	8		(SUB FOR R45193) (SUB R88044)
7	R62418	SCREW	5		(SUB FOR R45192) (SUB R88043) (USE WITH R49650, R59850 OR R72128, APPL)
8	R62418	SCREW	11		(USE WITH R87558) (SUB R88043)
8	R62421	SCREW	6		(SUB FOR R45195) (SUB R88042) (USE WITH R49650, R59850 OR R72128, APPL)
9	15H624	PIPE PLUG	6		1/2", (SUB FOR AR72319)
10	34H387	SPRING PIN	1		3/16" X 3/4"
11	15H690	PIPE PLUG	11		3/4", (SUB FOR AR72318)
12	DOWEL PIN	1		(NO LONGER USED)
13	R78702	VALVE SEAT INSERT	12		(SUB FOR R50356) STD
13	R82508	VALVE SEAT INSERT	12		0.25 MM (.010") OS (SUB FOR R55061, APPL)
14	F1743R	DOWEL PIN	1	-XXXXXX	
14	AT107509	PLUG	1	XXXXXX-	(NOT AS SHOWN)
15	AR54554	CYLINDER HEAD	1	-445947	(MARKED R50360 OR R86700)
15	AR70564	CYLINDER HEAD	1	445948-579849	(MARKED R58673, R59876 OR R61521) (SUB AR103505)
15	AR103505	CYLINDER HEAD	1	579850-	(MARKED R61521, R67906, R76384 OR R86696) (SUB FOR AR81615)
16	R43595	GASKET	1		
17	R51347	COVER	1		
18	12H331	LOCK WASHER	6		3/8"
19	19H2284	CAP SCREW	6		3/8" X 7/8"
20	R45693	CAP SCREW	2		
21	R48291	GASKET	1		(MARKED R48291) (THIN)
22	R45692	CAP SCREW	1		
..	R88042	SCREW	6		
..	R88043	SCREW	5		
..	R88043	SCREW	11		(USE WITH BLOCK MARKED R87558, APPL)
..	R88044	SCREW	8		
..	R88045	SCREW	7		

MEMORANDA

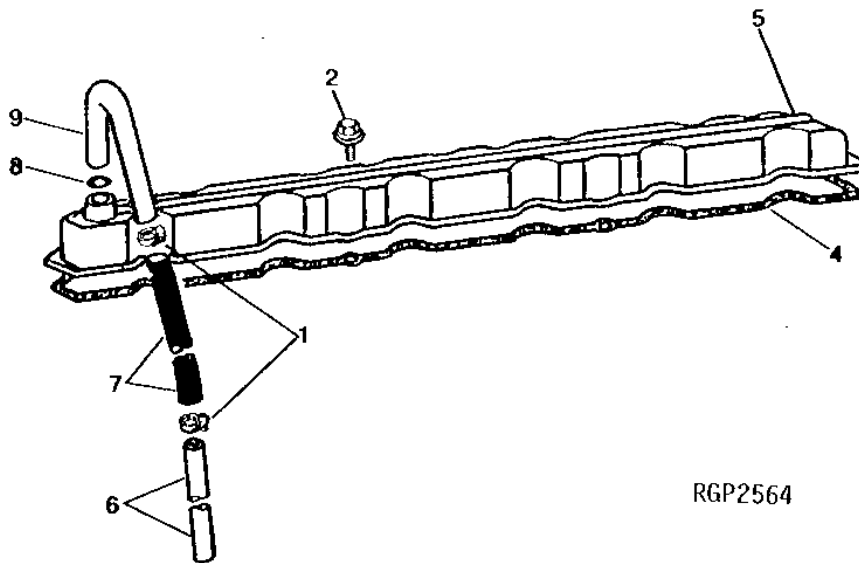
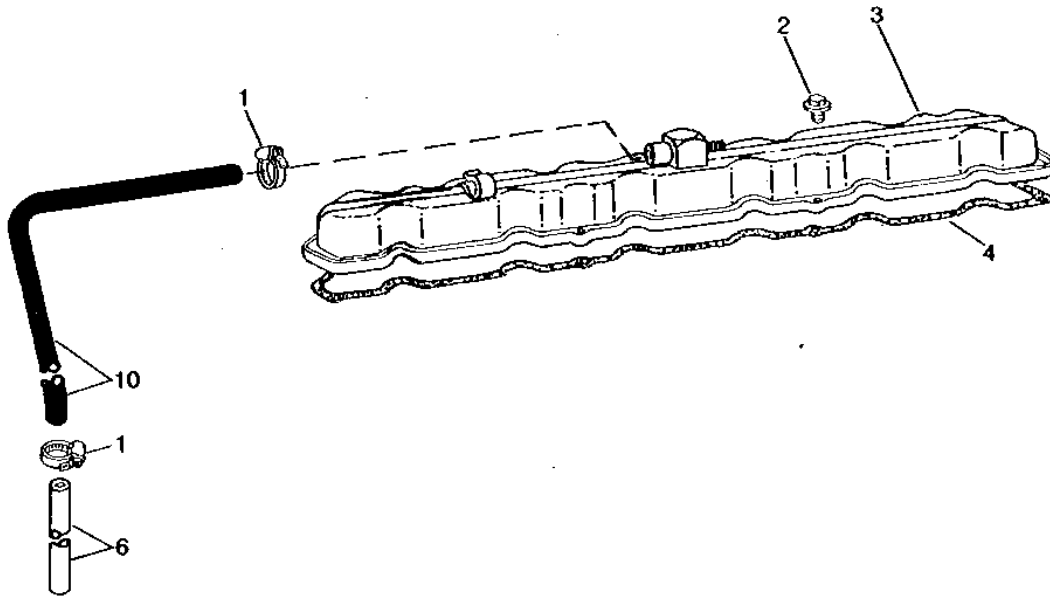
1B10

ENGINE

RGP2564

-UN-01JAN94

ROCKER ARM COVER AND VENTILATOR TUBE



RGP2564

1B11

ENGINE

ROCKER ARM COVER AND VENTILATOR TUBE - CONTINUED

KEY	PART NO.	PART NAME	QTY	ENGINE SERIAL NO.	REMARKS
1	TY22470	CLAMP	2		(SUB FOR AR21839)
2	AR103811	SCREW, WITH WASHER	8		(SUB FOR AR45530)
3	RE37448	COVER	1	432480-	(A) (SUB FOR AR73677 OR AR93172)
4	R49866	GASKET	1		(SUB FOR R32593)
5	AR26516	COVER	1	-432479	
6	R50388	TUBE	1		
7	R50389	HOSE	1	-432479	
8	R495R	O-RING	1	-432479	
9	R50387	LINE	1	-432479	
10	R99793	HOSE	1	432480-	(A) (SUB FOR R60753) (SUB TY22450)
	TY22450	BULK HOSE	AR		(BULK)

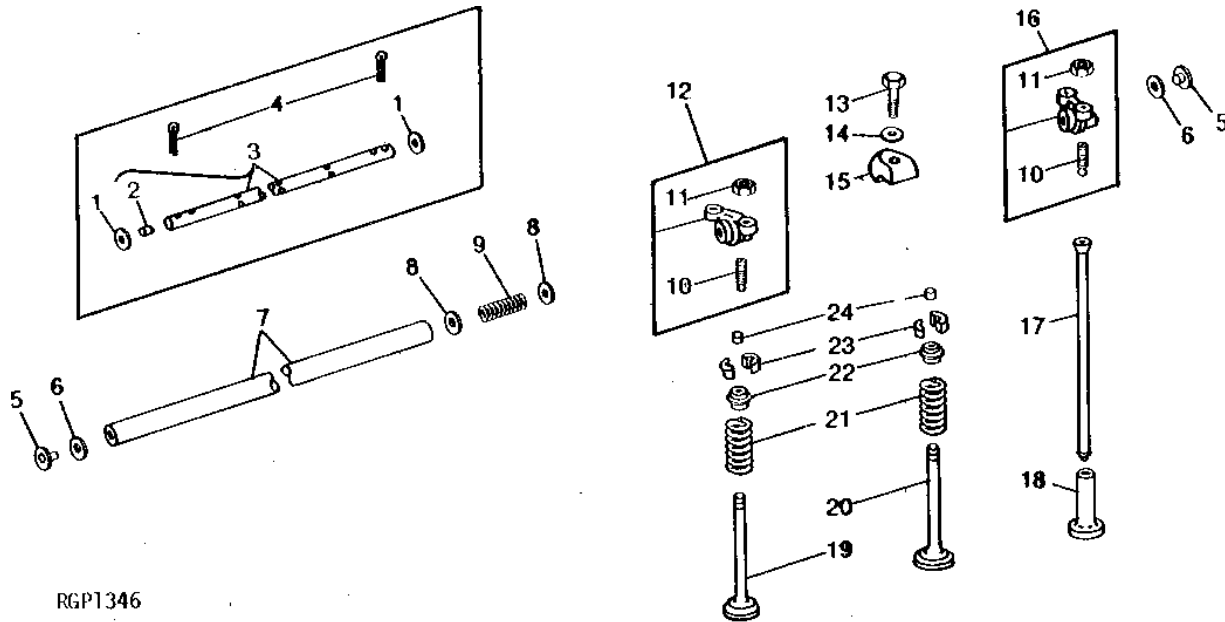
(A) CONTAINED IN AR73676 KIT (ENGINE SERIAL NO. -432479)

1B12

ENGINE

ROCKER ARMS, SHAFTS AND VALVES

RGP1346 -UN-01JAN94



RGP1346

KEY	PART NO.	PART NAME	QTY	ENGINE SERIAL NO.	REMARKS
1	24H1384	WASHER	12	-XXXXXX	49/64" X 1-1/16" X 0.036"
2	R27529	PLUG	2	-XXXXXX	
3	AR26444	ROCKER ARM SHAFT	1	-XXXXXX	(SUB R70826 AND (2) R54565)
4	11M7082	COTTER PIN	2	-XXXXXX	2.500 X 25 MM
5	R54565	PLUG	2	XXXXXX-	(A) (USE WITH R54564 OR R60650)
6	R26081	WASHER	2	XXXXXX-	
7	R70826	ROCKER ARM SHAFT	1	XXXXXX-	(A) (SUB FOR AR26444, R54564 OR R60650) (ALSO ORDER (2) R54565)
8	R71208	WASHER	10	XXXXXX-	19.500 X 26 X 0.910 MM (0.768" X 1.024" X 0.036")
9	R26079	SPRING	5		
10	R27443	SET SCREW	12		
11	14H846	NUT	12		3/8"
12	AR54905	ROCKER ARM	6		
13	19H1740	CAP SCREW	6		7/16" X 1-3/4"
14	R26559	WASHER	6		
15	R26748	CLAMP	6		
16	AR54904	ROCKER ARM	6		
17	R85027	PUSH ROD	12		(SUB FOR AR40680)
18	R52773	CAM FOLLOWER	12		
19	R50358	INTAKE VALVE	AR		STD
	R55055	INTAKE VALVE	AR		0.08 MM (.003") OS
	R55057	INTAKE VALVE	AR		0.38 MM (.015") OS
	R55059	INTAKE VALVE	AR		0.76 MM (.030") OS
20	R50357	EXHAUST VALVE	AR		STD
	R55056	EXHAUST VALVE	AR		0.08 MM (.003") OS
	R55058	EXHAUST VALVE	AR		0.38 MM (.015") OS
	R55060	EXHAUST VALVE	AR		0.76 MM (.030") OS
21	R26125	SPRING	12		
22	RE11410	ROTATOR	12		(SUB FOR AR41006)
23	T20077	RETAINER	24		
24	T20129	CAP	12		

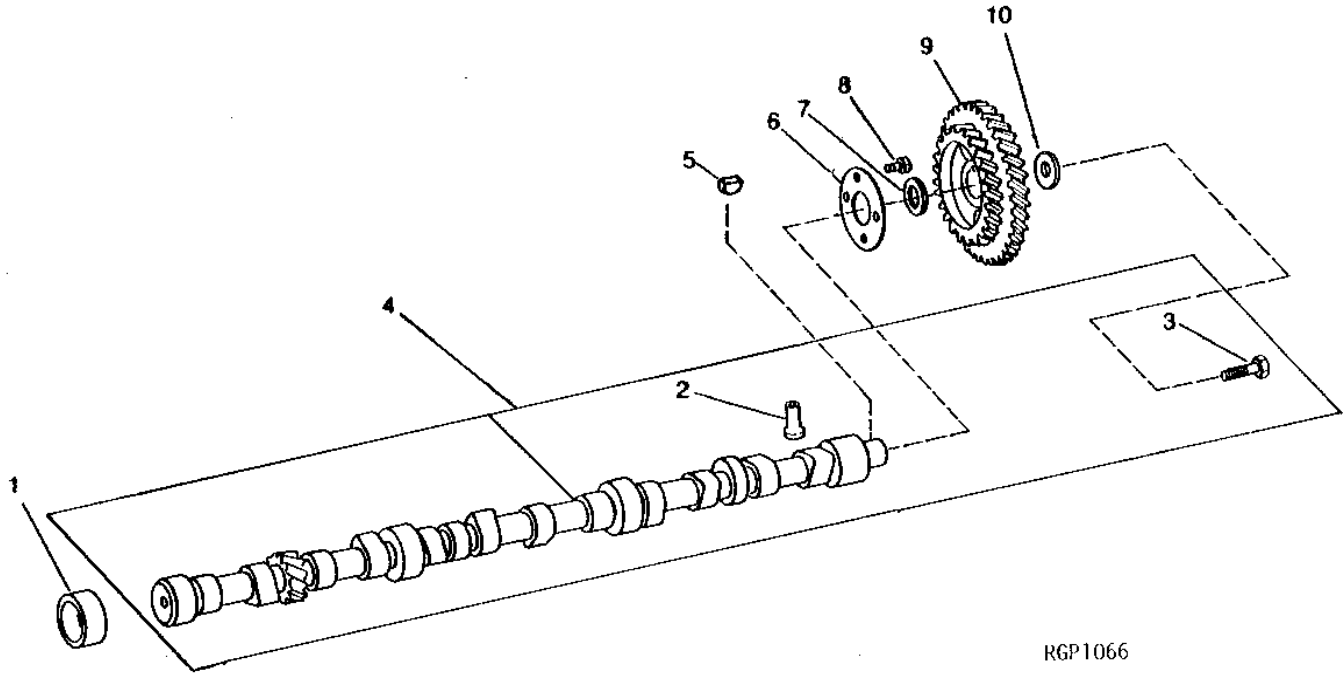
(A) CONTAINED IN AR73676 KIT (ENGINE SERIAL NO. -432479) (NLA)

1B13

ENGINE

RGP1066 -UN-01JAN94

CAMSHAFT AND GEAR



RGP1066

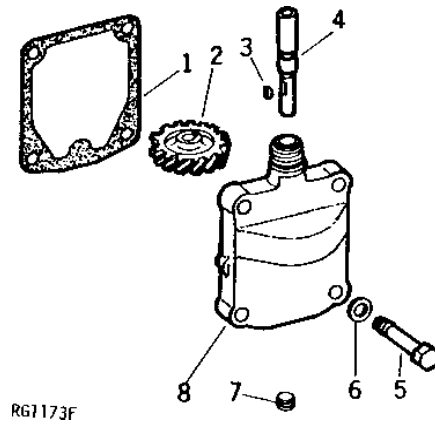
KEY	PART NO.	PART NAME	QTY	ENGINE SERIAL NO.	REMARKS
1	R46903	BUSHING	4		
2	R52773	CAM FOLLOWER	12		
3	19H1721	CAP SCREW	1	-427444	1/2" X 1-1/2"
	19H1777	CAP SCREW	1	427445-	1/2" X 1-3/4"
	R93238	CAP SCREW	1		1/2" X 2", (USE WITH R71529 OR R71531) (SUB FOR R79850, APPL)
4	AR100384	CAMSHAFT	1	-552496	(MARKED R42352, R43677, R57289, R59420, R61150, R61974 OR R71531) (SUB AR100385, APPL) (SUB FOR AR63280, AR69270, AR71709 OR AR74144)
	AR100385	CAMSHAFT	1	552497-	(MARKED R64086 OR R71529) (SUB FOR AR79610)
5	26H72	SHAFT KEY	1		1/8" X 5/8"
6	R42355	THRUST WASHER	1		
7	R42356	WASHER	1		
8	19H1813	CAP SCREW	4		5/16" X 5/8"
9	AR87700	GEAR	1		(SUB FOR AR55487, AR78345, AR88905 OR AR88965, APPL)
10	R35256	WASHER	1		

1B14

ENGINE

RG1173 -UN-01JAN94

TACHOMETER DRIVE



KEY	PART NO.	PART NAME	QTY	ENGINE SERIAL NO.	REMARKS
1	R62410	GASKET	1		(SUB FOR R44853, THIS APPLICATION)
2	R32426	GEAR	1		
3	26H3	SHAFT KEY	1	3/32" X 3/8"	
4	R26172	SHAFT	1		
5	19H1732	CAP SCREW	4	3/8" X 1-1/4"	
6	24M7096	WASHER	4	10.500 X 18 X 1.600 MM	
7	15H559	PIPE PLUG	1	1/4"	
8	R43851	HOUSING	1		(SUB FOR AR43652)

**Thank you very much for
your reading. Please Click
Here. Then Get COMPLETE
MANUAL. NO WAITING**



NOTE:

**If there is no response to
click on the link above,
please download the PDF
document first and then
click on it.**

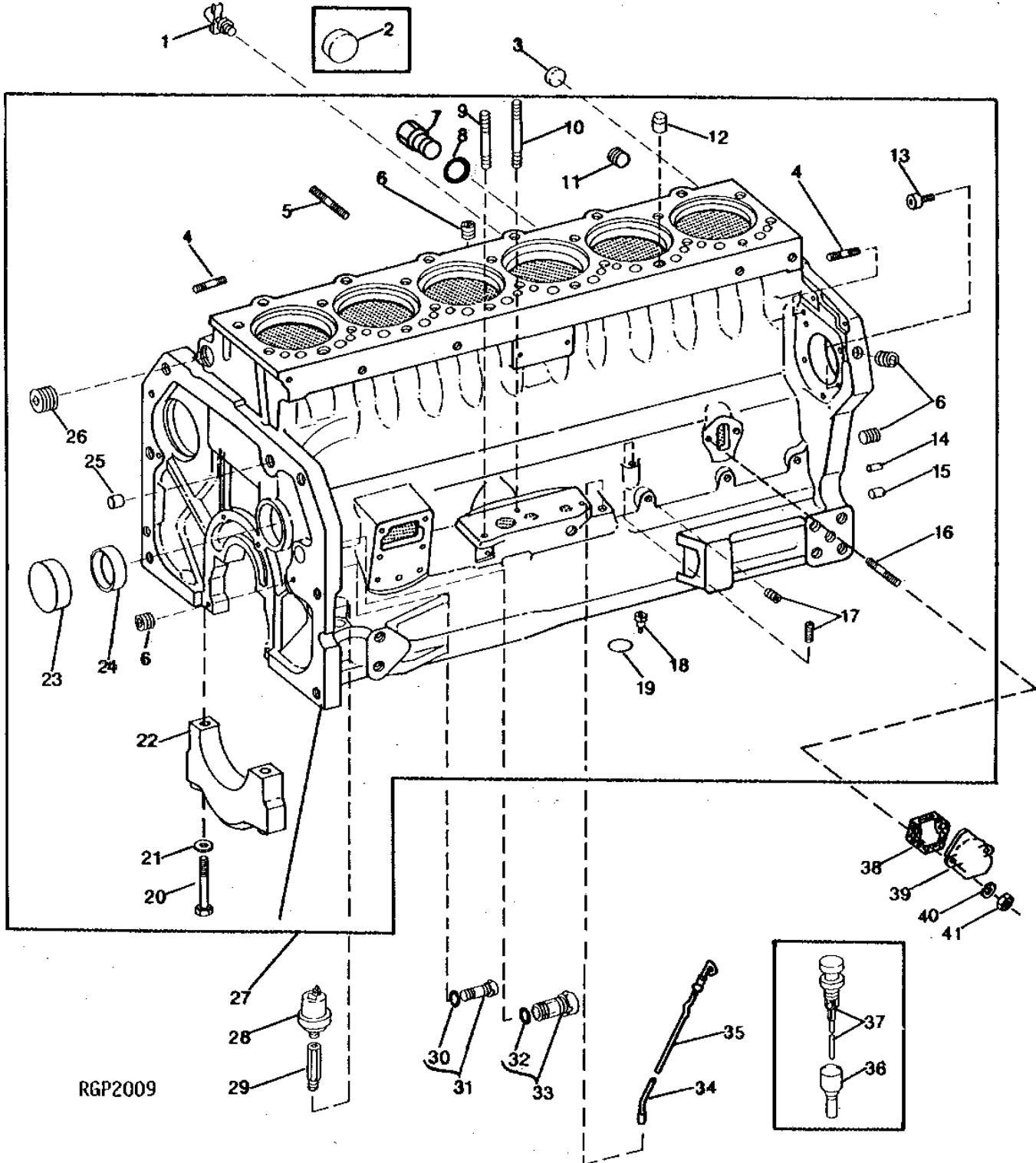
1B15

ENGINE

RGP2009

-UN-01JAN94

CYLINDER BLOCK



RGP2009

1B16

ENGINE

CYLINDER BLOCK - CONTINUED

KEY	PART NO.	PART NAME	QTY	ENGINE SERIAL NO.	REMARKS
1	AT13740	DRAIN VALVE	1		
2	AR80294	PLUG	1		LESS COOLANT HEATER
3	R27036	CAP	1		LESS HEATER, (SUB FOR R47092)
4	R55396	STUD	5		3/8" X 1-11/16"
5	R51284	STUD	2		
6	15H624	PIPE PLUG	4		1/2" 1/2", (SUB FOR AR72319)
7	R39741	DRAIN PLUG	1		
8	U13639	O-RING	1		
9	R106859	STUD	1		3/8" X 3", (SUB FOR T20173, F3646R OR R26622, APPL)
10	R55395	STUD	1		3/8" X 3-5/8"
11	15H690	PIPE PLUG	1		3/4" 3/4", (SUB FOR AR72318)
12	R42340	BUSHING	2		
13	22H776	SET SCREW	3		5/16" X 7/16", (SUB FOR R56545)
14	R1612R	DOWEL PIN	2		
15	F1743R	DOWEL PIN	2		
16	R48755	STUD	2		5/16" X 1-1/2"
17	R104592	PIPE PLUG	6		(SUB FOR R21630, APPL)
18	R43621	ORIFICE	6		
19	R71732	O-RING	1		(SUB FOR R50378)
20	R42365	BOLT	14		(USE WITH BLOCK MARKED R59850 OR R72128)
	T15539	BOLT	14		(USE WITH BLOCK MARKED R49470 OR R49650)
21	R70268	WASHER	14		(SUB FOR R42363)
22	R57158	BEARING CAP	6		(MAIN)
	R57159	BEARING CAP	1		(MAIN THRUST)
23	R26115	CAP	1		
24	R46903	BUSHING	4		
25	R61288	DOWEL PIN	1		
26	15H562	PIPE PLUG	1		1" 1", (SUB FOR AR78522)
27	AR94840	CYLINDER BLOCK	1		(A) (MARKED R49650, R59850, R49470 OR R72128) (SUB FOR AR63271) (ALSO ORDER AR71850, AR100478, R54123 AND U13639) (SUB RE28308 AND (6) R88043)
	RE28308	CYLINDER BLOCK	1		(MARKED R87558)
28	RE15583	ENGINE OIL PRESSURE SENDER	1		(SUB FOR AR58234) ENGINE OIL PRESSURE
29	R53014	FITTING	1		
30	A4365R	O-RING	1		
31	AR61589	PLUG	1		
32	R27149	O-RING	1		
33	AR61533	PLUG	1		
34	AR71850	DIPSTICK TUBE	1		(USE WITH R72128)
35	AR100478	DIPSTICK	1		(USE WITH R72128)
36	AR54557	TUBE	1		(USE WITH R49650, R59850 OR R49470) (SUB AR71850 AND AR100478)
37	AR58986	DIPSTICK	1		(SUB AR71850 AND AR100478) (USE WITH R49650, R59850 OR R49470)
38	R97350	GASKET	1		(SUB FOR R27285)
39	R27286	COVER	1		
40	12H303	LOCK WASHER	2		5/16"
41	14H785	NUT	2		5/16"

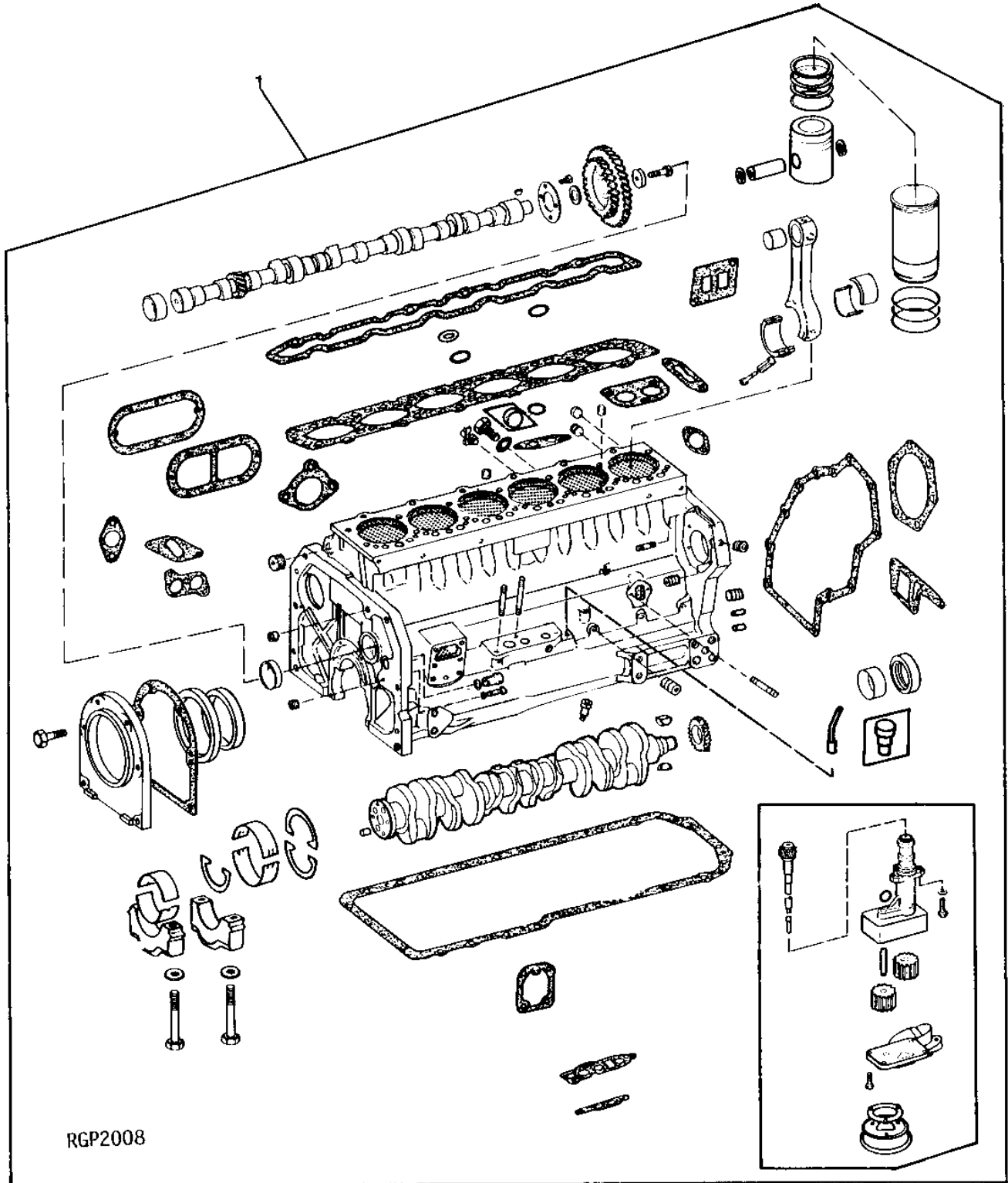
(A) UNLESS PREVIOUSLY INSTALLED, ALSO ORDER RE51829 (HEATER SUPPLY LINE), R46414 AND R48384.

1B17

ENGINE

ENGINE SHORT BLOCK (WITH OIL PUMP)

RGP2008 -UN-01JAN94



RGP2008