

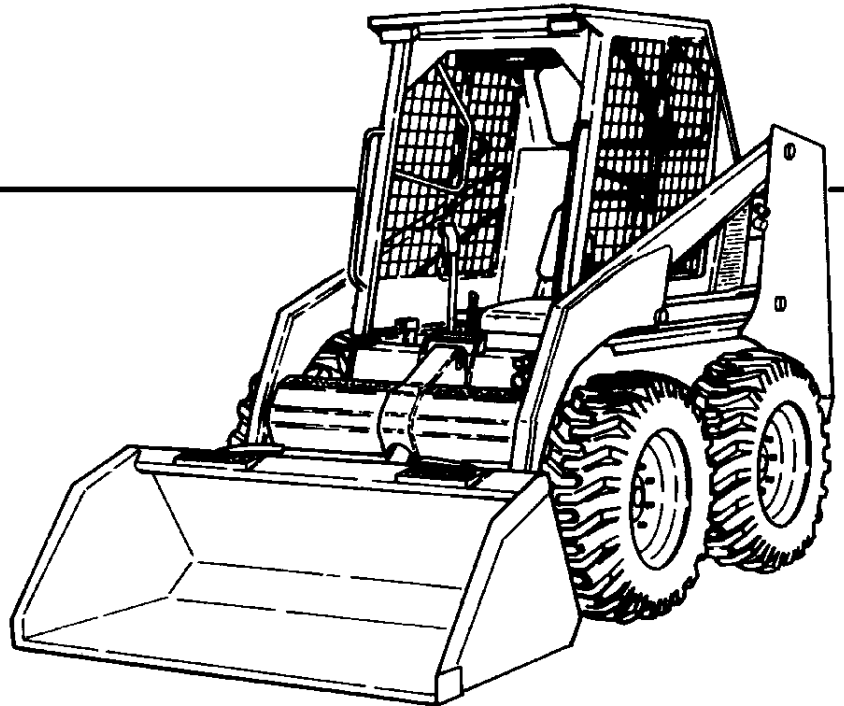
751



Bobcat®

Parts Manual

S/N 5157 11001 & Above
S/N 5156 11001 & Above



**EQUIPPED WITH
BOBCAT INTERLOCK
CONTROL SYSTEM (BICS™)**



Hello

Thank you very much for your download.

In the last page of this PDF document.

There is a link.

Please click on that link and return to our website.

Then you can get the complete manual immediately.

No need to wait.

Thanks for continuing to read the documentation.

Best wishes.

751F ALPHABETICAL INDEX

ADHESIVE	300	LATCH, REAR DOOR	24
AIR CLEANER	130, 166	LEVER, PINTLE	90
ALTERNATOR	114, 122, 136	LIFT KITS	249, 250, 251
ANTI-FREEZE	300	LIGHTS, FRONT & REAR	254
AXLE	41	LOCK, REAR DOOR	272
BATTERY	112	LUBRICANT	300
BELT, ALTERNATOR	136	MAIN FRAME	12
BELT, COOLING FAN DRIVE	126	MANIFOLD	157
BELT, PUMP DRIVE	132	MOUNT, ENGINE	136
BLACK GOLD	300	MOUNT, HYDRO. PUMP	134, 136
BLOCK HEATER	176	MUFFLER	130
BOB-TACH	26, 30	OIL	300
CAB	14	OIL COOLER	88
CAB ENCLOSURE	190	PAINT	300
CABLE, BATTERY	112	PAN, OIL	150
CAMSHAFT	153, 154	PEDALS, CONTROL	61
CAP, FUEL	34	PISTON, ENGINE	152
CAP, HYD. OIL	84	POLISH	300
CAP, RADIATOR	126	PUMP, FUEL	34, 161
CHAIN, DRIVE	37	PUMP, GEAR	103
CHAINCASE	12, 37	PUMP, OIL	146
COOLING FAN DRIVE ASSY.	140	PUMP, WATER	155
COUNTER WEIGHTS	196	QUICK COUPLERS	226, 266
CYLINDER BLOCK	145	RIM, WHEEL	296
CYLINDER, LIFT	59	RING GEAR	134
CYLINDER, TILT	56, 58	SEALANT	300
DECALS	198, 200	SEAT	18, 21, 290, 292, 294
DIPSTICK, ENG. OIL	150	SEAT BELT	18, 283
DOOR, REAR	24	SENSOR, FUEL	34
DRIVE MOUNT ASSY.	38	SHOCK CONTROLS	92
ENGINE	142	SOLENOID	112
EXTINGUISHER	222	SPROCKET, AXLE	37, 41
FAN	126	STARTER	112, 124
FILTER, AIR	166	STOP, LIFT ARM	26
FILTER, ENG. OIL	143	STROBE LIGHT	287, 288
FILTER, FUEL	34	TANK, COOLANT	126
FILTER, HYD. OIL	88	TANK, FUEL	34
FIRE EXTINGUISHER	222	THERMOSTAT	156
FUEL SYSTEM	34	THROTTLE	138
GAS SPRING	14	TIRES	295
GASKET KIT, ENG.	142	VALVE COVER	147
GLOW PLUG	163	VALVE, CONTROL	64
GUAGE, ENG. TEMP.	108	VALVE, ENGINE	148
GUAGE, FUEL	108	VALVE, HYD. CONTROL	68, 72, 76
HEAD, CYLINDER	149	VOLTMETER	108
HEATER	242, 243	WINDOW, REAR	14, 192
HORN	245, 246	WINDOW, SIDE	192
HOURLY METER	108, 247	WINDSHIELD WIPER	274
HUB, AXLE	41		
INJECTION NOZZLES	163, 164		

751F CONTENTS

MAIN FRAME	12-39
MAIN FRAME	12-13
OPERATOR CAB	14-17
SEAT & SEAT BAR	18-21
SEAT	22-25
PANELS	26-27
REAR DOOR	28-29
LIFT ARM & BOB-TACH	30-33
BOB-TACH	34-35
FUEL SYSTEM	36-39
DRIVE TRAIN	40-47
DRIVE TRAIN	40-41
MOTOR CARRIER	42-43
DISC BRAKE	44-45
AXLE	46-47
HYDRAULIC SYSTEM	48-89
HYDRAULIC CIRCUITRY	48-55
MANUAL LIFT RELEASE SYSTEM	56-57
AUXILIARY HYDRAULICS	58-59
TILT CYLINDER	60-63
LIFT CYLINDER	64-65
CONTROL PEDALS	66-67
HYDRAULIC CONTROL VALVE (W/BICS VALVE)	68-71
* HYDRAULIC CONTROL VALVE (W/BICS CONTROL VALVE)	72-75
HYDRAULIC CONTROL VALVE (ADVANCED HAND CONTROLS) (W/BICS VALVE)	76-79
* HYDRAULIC CONTROL VALVE (SERVICE VALVE) (ADVANCED CONTROL SYSTEM)	80-83
BICS CONTROL VALVE	84-85
MAUNUAL LIFT RELEASE VALVE	86-87
BUCKET POSITIONING VALVE	88-89
HYDROSTATIC SYSTEM	90-106
HYDROSTATIC CIRCUITRY	90-95
HAND CONTROLS	96-99
HYDROSTATIC MOTOR	100-101
HYDROSTATIC PUMP	102-109
GEAR PUMP	110-113
HYDROSTATIC OIL FILTER	114-117
ELECTRICAL SYSTEM	118-135
CAB ELECTRICAL CIRCUITRY	118-121
ENGINE ELECTRICAL CIRCUITRY	122-125
CONTROLS ELECTRICAL	126-131
ALTERNATOR	132-133
STARTER	134-135
POWER UNIT	136-193
COOLING SYSTEM	136-139
ENGINE & ATTACHING PARTS	140-147
THROTTLE	148-149
COOLING FAN DRIVE ASSY.	150-151
ENGINE & GASKET KITS	152-153
GEARCASE	154-155
CRANKCASE	156-157
ROCKER ARM COVER	158-159
VAVLE ROCKER ARM	160-161
CYLINDER HEAD	162-163
OIL PAN	164-165

751F CONTENTS (Cont'd)

POWER UNIT (CONT'D)	136-193
PISTON & CRANKSHAFT	166-167
FUEL CAMSHAFT	168-169
CAMSHAFT	170-171
WATER PUMP	172-173
WATER FLANGE & THERMOSTAT	174-175
MANIFOLDS	176-177
ENGINE STOP LEVER	178-179
GOVERNOR	180-181
SPEED CONTROL PLATE	182-183
INJECTION PUMP	184-187
INJECTOR NOZZLES	188-189
INJECTOR HOLDER	190-191
AIR CLEANER	192-193
ACCESSORIES & OPTIONS	197-368
ACCESS COVER	197-200
AIR DEFLECTOR KIT	201-202
AXLE SEAL KIT	203-204
BACK-UP ALARM	205-206
BEACON LIGHT	207-208
BLOCK HEATER	209-210
BOB-TACH LEVERS	211-212
BUCKET POSITION ON-OFF KIT	213-214
BUCKET POSITIONING VALVE KIT	215-216
CAB DOOR	217-220
CAB ENCLOSURE	221-226
CAB WINDOWS	227-228
CLOSED ALTERNATOR	229-230
COUNTERWEIGHT KIT	231-232
DECALS	233-236
ELECTRICAL CONTROLS KIT	237-240
ENGINE MOUNT KITS	241-242
EUROPEAN ACCESSORIES	243-260
FIRE EXTINGUISHER	261-262
FLASHER LIGHTS	263-264
FRONT AUXILIARY KIT	265-268
HAND CONTROL KIT	269-272
* HAND CONTROL KIT	273-276
HANDLE KITS	277-278
HEATER KIT (FRESH AIR)	279-280
HEATER (FRESH AIR)	281-282
HEATER PLUMBING KIT (FRESH AIR)	283-284
HEATER KIT	285-286
HEATER	287-288
HEATER PLUMBING KIT	289-290
HORN KIT	291-294
HOURMETER KIT	295-296
KEYLESS IGNITION	297-298
LIFT KIT	299-304
LIGHT KIT	305-306
MUFFLER/PURIFIER KIT	307-308
PRESSURE RELEASE KIT	309-310
PRESSURE RELEASE VALVE	311-312
PUSH TO OPERATE KIT	313-316
RADIATOR SCREEN KIT	317-318

751F CONTENTS (Cont'd)

ACCESSORIES & OPTIONS (CONT'D)	197-368
REAR AUXILIARY	319-322
REAR AUXILIARY VALVE	323-324
REAR AUX. IN-LINE FILTER	325-326
REAR DOOR LOCK	327-328
REAR WIPER KIT	329-330
RENTAL KIT	331-332
SEAT	333-338
SEAT BELT	339-340
SEAT BAR KIT	341-342
SEAT KIT	343-344
SEAT RAIL COVER KIT	345-346
SEAT SENSOR OVERRIDE	347-350
SIDE CONSOLE KIT	351-352
SOUND KIT	353-354
SOUND REDUCTION HARDHAT	355-356
STROBE LIGHT	357-360
TIRES & RIMS	361-366
BULK ITEMS	367-368
NUMERICAL INDEX	369-421
NUMERICAL INDEX	369-421

751F CONTENTS

MAIN FRAME	12-39
MAIN FRAME	12-13
OPERATOR CAB	14-17
SEAT & SEAT BAR	18-21
SEAT	22-25
PANELS	26-27
REAR DOOR	28-29
LIFT ARM & BOB-TACH	30-33
BOB-TACH	34-35
FUEL SYSTEM	36-39
DRIVE TRAIN	40-47
DRIVE TRAIN	40-41
MOTOR CARRIER	42-43
DISC BRAKE	44-45
AXLE	46-47
HYDRAULIC SYSTEM	48-89
HYDRAULIC CIRCUITRY	48-55
MANUAL LIFT RELEASE SYSTEM	56-57
AUXILIARY HYDRAULICS	58-59
TILT CYLINDER	60-63
LIFT CYLINDER	64-65
CONTROL PEDALS	66-67
HYDRAULIC CONTROL VALVE (W/BICS VALVE)	68-71
* HYDRAULIC CONTROL VALVE (W/BICS CONTROL VALVE)	72-75
HYDRAULIC CONTROL VALVE (ADVANCED HAND CONTROLS) (W/BICS VALVE)	76-79
* HYDRAULIC CONTROL VALVE (SERVICE VALVE) (ADVANCED CONTROL SYSTEM)	80-83
BICS CONTROL VALVE	84-85
MAUNUAL LIFT RELEASE VALVE	86-87
BUCKET POSITIONING VALVE	88-89
HYDROSTATIC SYSTEM	90-106
HYDROSTATIC CIRCUITRY	90-95
HAND CONTROLS	96-99
HYDROSTATIC MOTOR	100-101
HYDROSTATIC PUMP	102-109
GEAR PUMP	110-113
HYDROSTATIC OIL FILTER	114-117
ELECTRICAL SYSTEM	118-135
CAB ELECTRICAL CIRCUITRY	118-121
ENGINE ELECTRICAL CIRCUITRY	122-125
CONTROLS ELECTRICAL	126-131
ALTERNATOR	132-133
STARTER	134-135
POWER UNIT	136-193
COOLING SYSTEM	136-139
ENGINE & ATTACHING PARTS	140-147
THROTTLE	148-149
COOLING FAN DRIVE ASSY.	150-151
ENGINE & GASKET KITS	152-153
GEARCASE	154-155
CRANKCASE	156-157
ROCKER ARM COVER	158-159
VAVLE ROCKER ARM	160-161
CYLINDER HEAD	162-163
OIL PAN	164-165

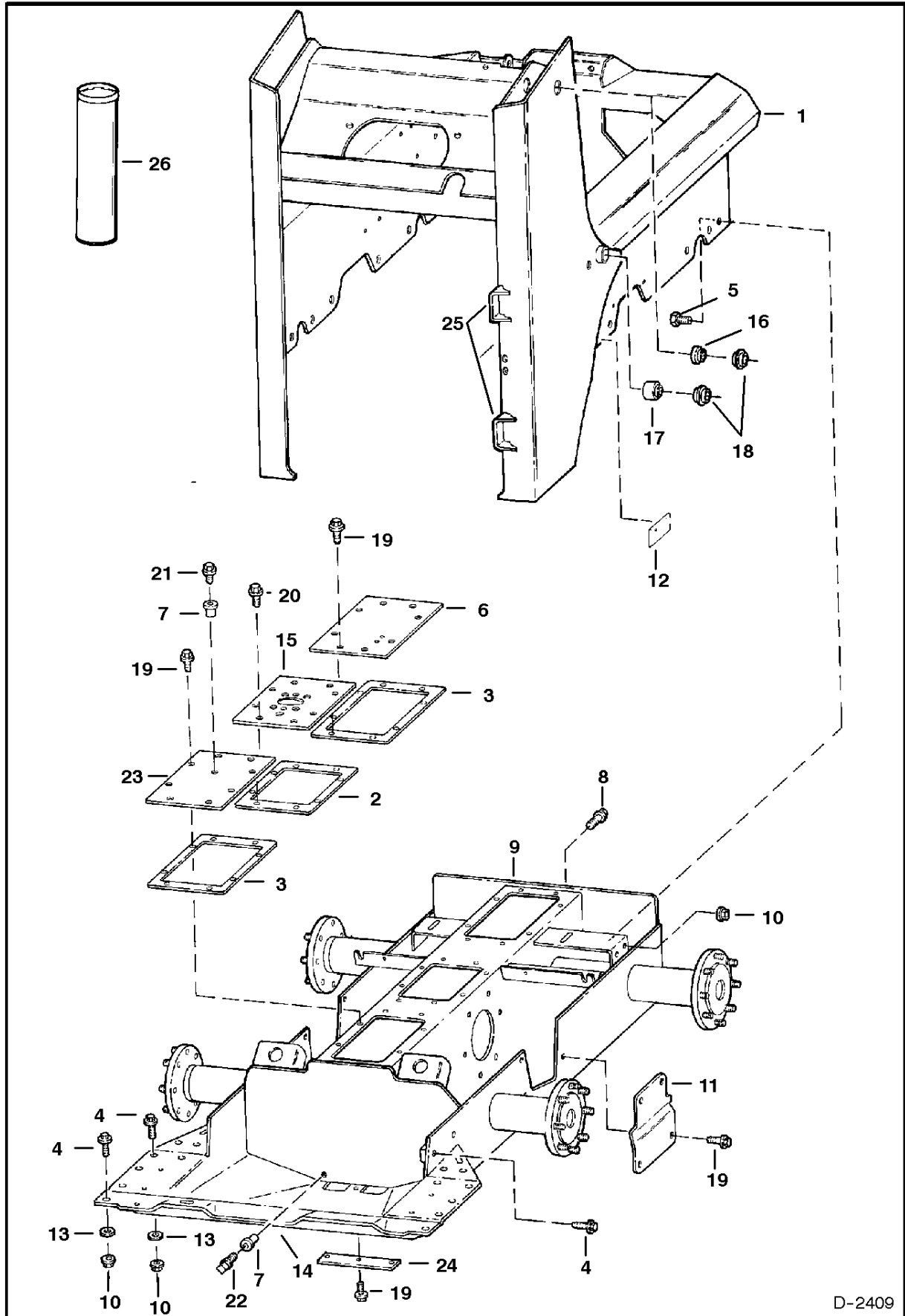
751F CONTENTS (Cont'd)

POWER UNIT (CONT'D)	136-193
PISTON & CRANKSHAFT	166-167
FUEL CAMSHAFT	168-169
CAMSHAFT	170-171
WATER PUMP	172-173
WATER FLANGE & THERMOSTAT	174-175
MANIFOLDS	176-177
ENGINE STOP LEVER	178-179
GOVERNOR	180-181
SPEED CONTROL PLATE	182-183
INJECTION PUMP	184-187
INJECTOR NOZZLES	188-189
INJECTOR HOLDER	190-191
AIR CLEANER	192-193
ACCESSORIES & OPTIONS	197-368
ACCESS COVER	197-200
AIR DEFLECTOR KIT	201-202
AXLE SEAL KIT	203-204
BACK-UP ALARM	205-206
BEACON LIGHT	207-208
BLOCK HEATER	209-210
BOB-TACH LEVERS	211-212
BUCKET POSITION ON-OFF KIT	213-214
BUCKET POSITIONING VALVE KIT	215-216
CAB DOOR	217-220
CAB ENCLOSURE	221-226
CAB WINDOWS	227-228
CLOSED ALTERNATOR	229-230
COUNTERWEIGHT KIT	231-232
DECALS	233-236
ELECTRICAL CONTROLS KIT	237-240
ENGINE MOUNT KITS	241-242
EUROPEAN ACCESSORIES	243-260
FIRE EXTINGUISHER	261-262
FLASHER LIGHTS	263-264
FRONT AUXILIARY KIT	265-268
HAND CONTROL KIT	269-272
* HAND CONTROL KIT	273-276
HANDLE KITS	277-278
HEATER KIT (FRESH AIR)	279-280
HEATER (FRESH AIR)	281-282
HEATER PLUMBING KIT (FRESH AIR)	283-284
HEATER KIT	285-286
HEATER	287-288
HEATER PLUMBING KIT	289-290
HORN KIT	291-294
HOURMETER KIT	295-296
KEYLESS IGNITION	297-298
LIFT KIT	299-304
LIGHT KIT	305-306
MUFFLER/PURIFIER KIT	307-308
PRESSURE RELEASE KIT	309-310
PRESSURE RELEASE VALVE	311-312
PUSH TO OPERATE KIT	313-316
RADIATOR SCREEN KIT	317-318

751F CONTENTS (Cont'd)

ACCESSORIES & OPTIONS	197-368
REAR AUXILIARY	319-322
REAR AUXILIARY VALVE	323-324
REAR AUX. IN-LINE FILTER	325-326
REAR DOOR LOCK	327-328
REAR WIPER KIT	329-330
RENTAL KIT	331-332
SEAT	333-338
SEAT BELT	339-340
SEAT BAR KIT	341-342
SEAT KIT	343-344
SEAT RAIL COVER KIT	345-346
SEAT SENSOR OVERRIDE	347-350
SIDE CONSOLE KIT	351-352
SOUND KIT	353-354
SOUND REDUCTION HARDHAT	355-356
STROBE LIGHT	357-360
TIRES & RIMS	361-366
BULK ITEMS	367-368
NUMERICAL INDEX	369-421
NUMERICAL INDEX	369-421

MAIN FRAME



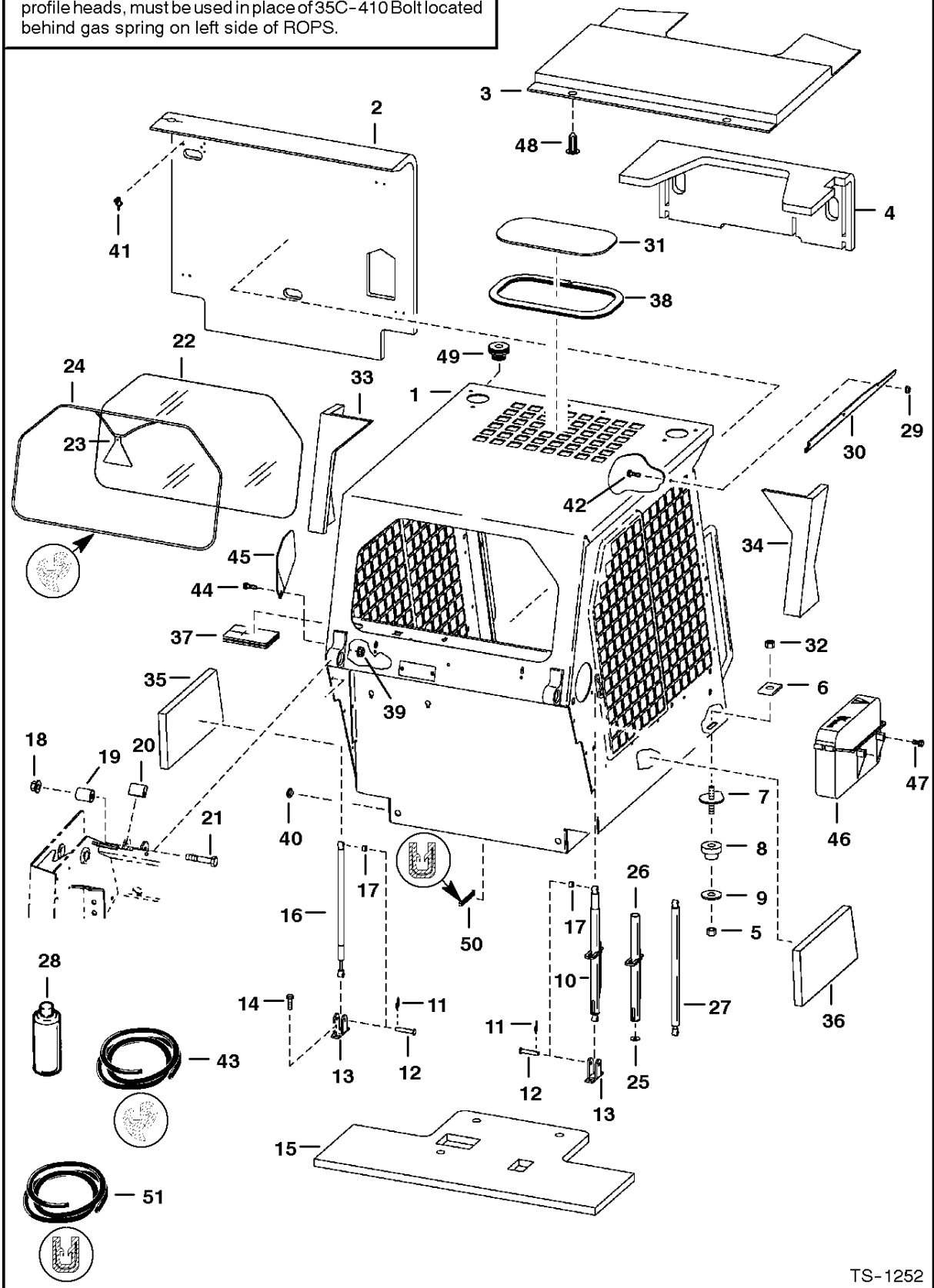
D-2409

MAIN FRAME

Ref.N°	Part N°	Description	Remarks	Serial N°	Qty.
1	6714590	MAIN FRAME			1
2	6706968	GASKET			1
3	6703097	GASKET			2
4	31C-824	BOLT		& Bel	12
5	31C-820	BOLT		& Bel	16
5	31C-820	BOLT		& Abv	28
6	6578505	COVER	See Page DISC BRAKE(1)		1
7	6553411	BUSHING			2
8	6731121	PLUG	chaincase fill - Was 11F-12 [A]		1
9	6712827	CHAINCASE	See Page DRIVE TRAIN(1)		1
10	83D-8	NUT			28
11	6704695	COVER			2
12	6704680	COVER	See Page HYDROSTATIC CIRCUITRY(1)		1
13	6701097	WASHER			10
14	6706485	HOOK	tie down - weld on		2
15	6706042	COVER	See Page DISC BRAKE(1)		1
16	6702583	BUSHING	weld on		2
17	6555987	BUSHING	weld on		2
18	6702584	BUSHING	weld on		4
19	84G-3712	BOLT			x
20		BOLT	See Page DISC BRAKE(1)		x
21	6670627	BREATHER	See Page DISC BRAKE(1)		1
22	6599645	PLUG	chaincase drain		1
23	6700330	COVER			1
24	6700182	COVER			1
25	6708987	BRACKET	hinge - weld on		2
26	6633583	SEALANT	chaincase cover		x

OPERATOR CAB

NOTE: 6714062 Gas Spring Kit to be used when loader is equipped W/Cab Enclosure. Because Gas Spring is heavy duty W/larger diameter, (2) of 91G-416 Screws, with low profile heads, must be used in place of 35C-410 Bolt located behind gas spring on left side of ROPS.



TS-1252

OPERATOR CAB

Ref.N°	Part N°	Description	Remarks	Serial N°	Qty.
1	6701957	OPERATOR CAB	includes cab decals		1
2	6708682	INSULATION	seat back - Use W/Ref. OPERATOR CAB(41)		1
3	6715094	INSULATION	cab top - Use W/Ref. OPERATOR CAB(48) - Was 6712537 [A]		1
4	6718489	INSULATION	control panel - Use W/Ref. OPERATOR CAB(41) - Was 6709020 [A]		1
5	85D-8	NUT			2
6	6553709	WASHER			2
7	6702971	BOLT			2
8	6560633	MOUNT			2
9	6515817	WASHER			2
10	NAP	GAS SPRING	Order Ref. OPERATOR CAB(25)-OPERATOR CAB(27)		1
11	6631418	PIN	ring		4
12	6567743	PIN			4
13	6706349	MOUNT			2
14	84G-3112	BOLT			4
15	6715095	INSULATION	seat pan - Use W/Ref. OPERATOR CAB(28) - Was 6706982 [A]		1
16	6700171	GAS SPRING	W/O lock		1
16	6714062	KIT	W/O lock -heavy duty gas spring - SEE NOTE		1
16	91G-410	SCREW	SEE NOTE		2
17	6567604	SPACER			2
18	53D-10	NUT	Was 83D-10 [B]		2
19	6562602	BUSHING	rubber		2
20	6579613	STOP	cab tilt		2
21	17C-1056	BOLT			2
22	6701651	WINDOW	rear		1
23	6559515	EXIT TAG			1
24	NAP	SEAL	100"(2540 mm)long-Order Ref. OPERATOR CAB(43)		1
24	NAP	CORD	100"(2540 mm)long-Order Ref. OPERATOR CAB(43)		1
25	6701174	WASHER			1
26	6708189	TUBE	stop		1
27	6664205	GAS SPRING			1
28	6652818	ADHESIVE	insulation - 24 oz. spray can		x
29	83D-4	NUT			6
30	6703159	TRACK	R.H.		1
30	6703160	TRACK	L.H.		1
31	6705735	WINDOW			1
32	59D-8	NUT			2
33	6715098	INSULATION	cab back - Use W/Ref. OPERATOR CAB(41) - Was 6706156 [A]		1
34	6715097	INSULATION	cab back - Use W/Ref. OPERATOR CAB(41) - Was 6706157 [A]		1
35	6703451	INSULATION	cab back - Use W/Ref. OPERATOR CAB(28)		1
36	6703452	INSULATION	cab back - Use W/Ref. OPERATOR CAB(28)		1
37	6703455	INSULATION	cab back - Use W/Ref. OPERATOR CAB(28)		1
38	6664351	SEAL	Used W/ Cab Headliner		1
38	6665012	SEAL	Used W/O Cab Headliner		1
39	83D-5	NUT			4
40	6664374	PLUG	heater hole		5
41	6664310	CLIP	insulation		7
42	35C-410	BOLT			6
43	6665568	SEAL	bulk - Sold Per Foot		x
43	6554149	CORD	bulk - Sold Per Foot		x
44	17C-512	BOLT			1
45	6707879	COVER			1

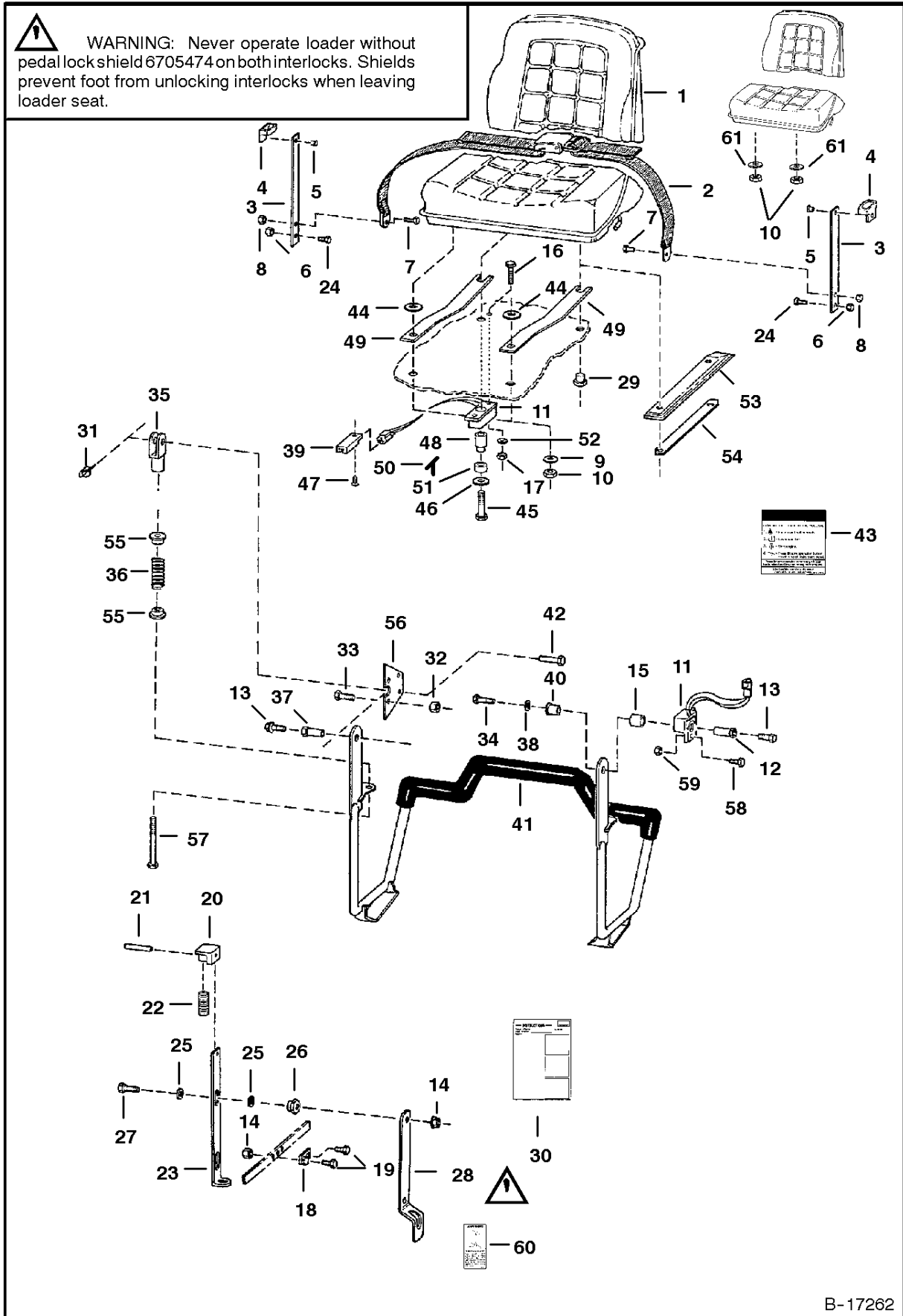
OPERATOR CAB

Ref.N°	Part N°	Description	Remarks	Serial N°	Qty.
46	6708827	CONTAINER	manuals		1
47	6702642	BOLT			2
48	6669308	RETAINER	snap in		2
49	6707674	PLUG	round - plugs 1.28'(32,5 mm) dia. hole in cab		1
50	NAP	MOULDING	10.5'(266 mm) long - front corners cab seat pan - Order Ref. OPERATOR CAB(51)		2
51	6654139	MOULDING	bulk - Sold Per Print		x

SEAT & SEAT BAR



WARNING: Never operate loader without pedal lock shield 6705474 on both interlocks. Shields prevent foot from unlocking interlocks when leaving loader seat.



B-17262

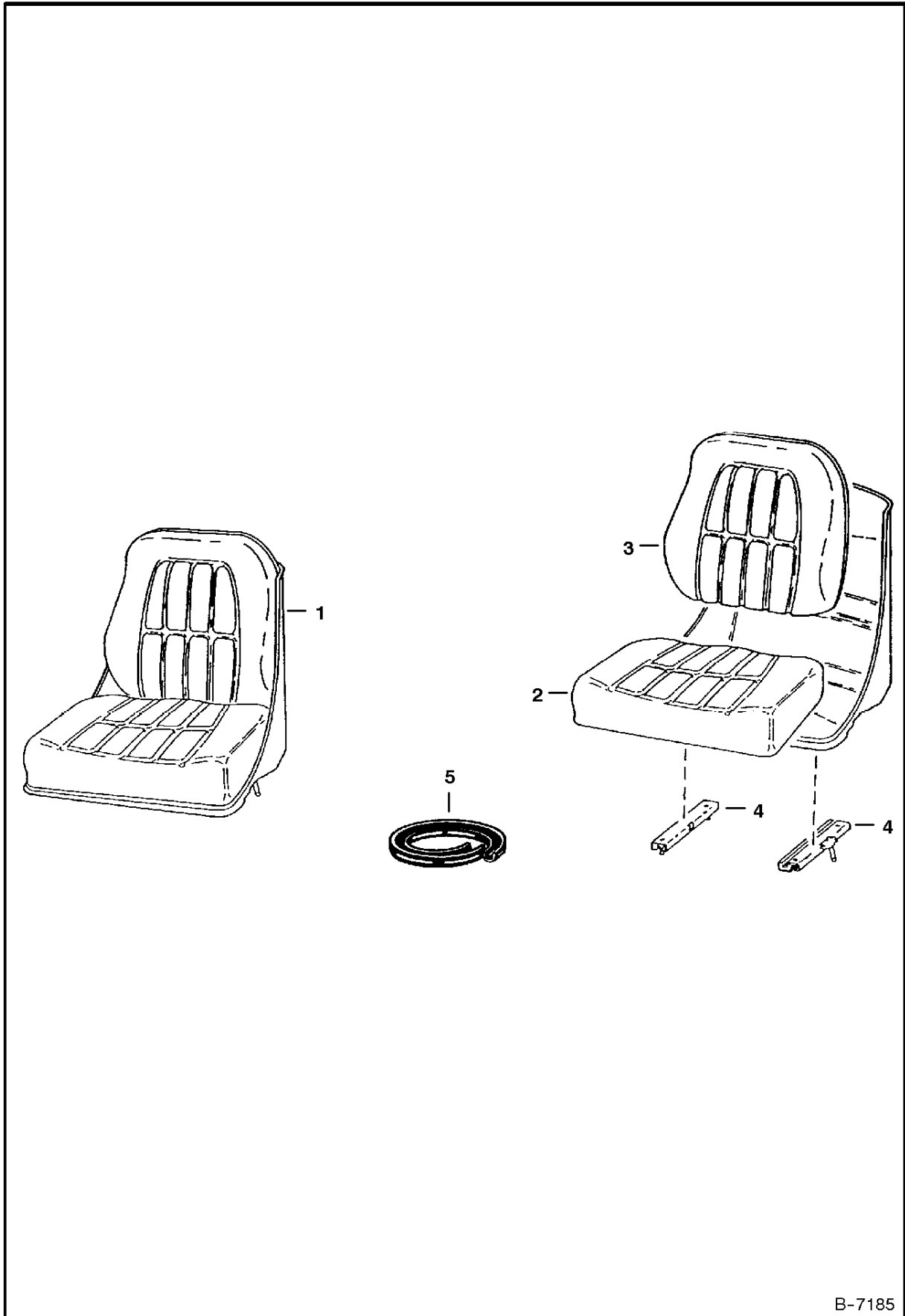
SEAT & SEAT BAR

Ref.N°	Part N°	Description	Remarks	Serial N°	Qty.
1		SEAT	See Page SEAT(1) - Standard seat requires (1) of Ref. SEAT & SEAT BAR(49) located on R.H. side - Milsco Suspension seat requires		1
2	NAP	SEAT BELT	Order 6675074 Seat Belt & (2) of Ref. SEAT & SEAT BAR(3) (6725373 Spring Plate) - Was 6667875 [A]		1
2	NAP	SEAT BELT	W/spring plates - Order 6675074 Seat Belt & (2) of Ref. SEAT & SEAT BAR(3) (6725373 Spring Plate) - Was 6725403 [A]		1
2	6675074	SEAT BELT	W/O spring plates		1
3	NAP	GUIDE ASSY.	W/Ref. SEAT & SEAT BAR(4) & SEAT & SEAT BAR(5) - Order 6711908inD1' Spring Plate, Ref. SEAT & SEAT BAR(4) & (2) of Ref. SEAT &		2
3	6711908	SPRING PLATE	Use W/Ref. SEAT & SEAT BAR(2) (NAP/6667875 Seat Belt)		2
3	6725373	SPRING PLATE	Use W/Ref. SEAT & SEAT BAR(2) (6675074 Seat Belt)		2
4	6565355	GUIDE			2
5	6630207	RIVET			4
6	85D-6	NUT			2
7	17C-716	BOLT			2
8	85D-7	NUT			2
9	6701174	WASHER			2
10	61D-5	NUT			2
10	59D-5	NUT	Was 61D-5 [B]	5157 16800 & Abv	4
10				5156 12800 & Abv	4
11	6670652	SENSOR	also order Ref. SEAT & SEAT BAR(50)		2
12	6706685	BUSHING			1
13	35C-612	BOLT			2
14	83D-6	NUT			8
15	6671135	BUSHING	magnetic		1
16	17C-428	BOLT	fastens thru body of Ref. SEAT & SEAT BAR(11)- 1.75' (44,4 mm)long - Was 6710539 [A]		1
17	50D-12	NUT			1
18	6563151	LINK			2
19	17C-616	BOLT			4
20	6563148	BLOCK			2
21	14J-2512	PIN			2
22	6702430	SPRING			2
23	6578150	LOCK			2
24	17C-612	BOLT			2
25	6700170	WASHER	plastic		8
26	6559479	NUT			4
27	6705489	BOLT			4
28	6705474	LOCK SHIELD	Never operate loader without pedal lock shield on both interlocks ... SEE WARNING ON PREVIOUS PAGE		2
29	6707319	NUT	spacer		1
30	6722392	INSTRUCTIONS	For Ref. SEAT & SEAT BAR(28)		1
31	6631418	PIN	ring		2
32	91D-7	NUT			2
33	17C-712	BOLT			2
34	17C-608	BOLT			2
35	6713589	CLEVIS			2
36	6701535	SPRING			2
37	6706962	BUSHING			1
38	25E-17	WASHER			1
39	6665000	CLIP			1
40	6664882	BUSHING	keyed		1
41	6716777	SEAT BAR	for use W/Compression Springs- Was 6713609 [A]		1
42	4F-6106	PIN			2

SEAT & SEAT BAR

Ref.N°	Part N°	Description	Remarks	Serial N°	Qty.
43	6707134	DECAL	instruction for LCS		1
44	6706890	WASHER			2
45	17C-508	BOLT			2
46	25E-16	WASHER			1
47	6664221	RETAINER			1
48	6710751	BUSHING	spacer - 1.67'(42,4 mm) long		1
49	6706966	SPRING	plate		1
50	6664881	KEY	magnet bushing		1
51	6666608	BUSHING	tapered magnetic		1
52	25E-10	WASHER			1
53	6711729	COVER			2
54	6711730	STRIP			2
55	6710659	BUSHING			4
56	6710660	MOUNT			2
57	6713887	BOLT			2
58	35C-410	BOLT	fastens thru tab of Ref. SEAT & SEAT BAR(11) - 5/8'(15,9 mm) long		1
59	83D-4	NUT			1
60	6705720	DECAL			1
61	6707318	GUIDE	Was 6571991 [A]	5157 16800 & Abv	2
61				5156 12800 & Abv	4

**SEAT
(Milsco)**

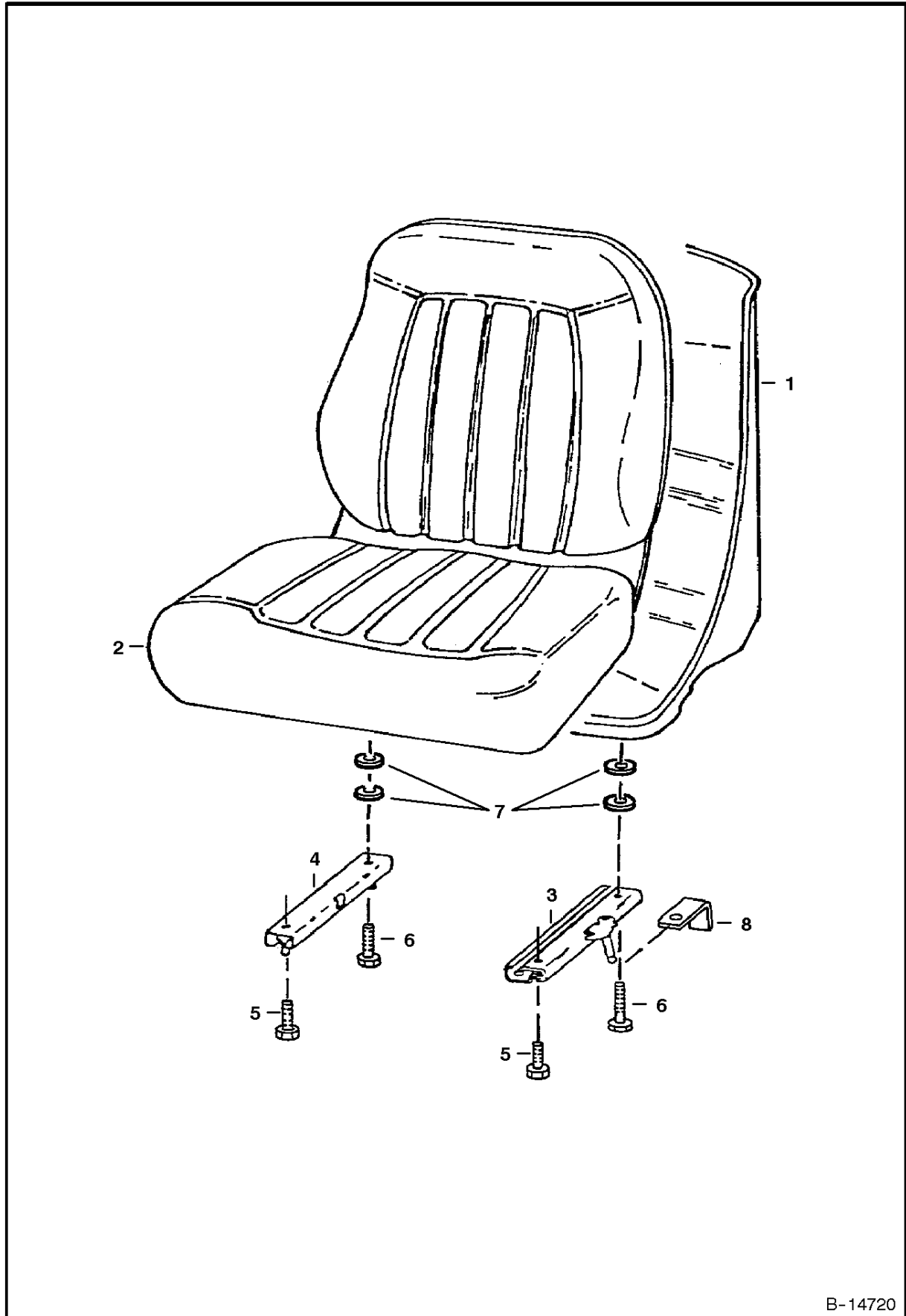


B-7185

SEAT

Ref.N°	Part N°	Description	Remarks	Serial N°	Qty.
1	6563140	SEAT	Was 6665401 [A]		1
2	6630468	SEAT CUSHION	seat		1
3	6630465	BACK CUSHION	back		1
4	6630469	TRACK	W/ Latch		1
4	6599780	TRACK	W/O Latch		1
5	6652935	EDGING	96" (2,4 m) - For Ref. SEAT(2) & SEAT(3)		x
5	6665656	CLIP	splice		1

SEAT (Michigan)

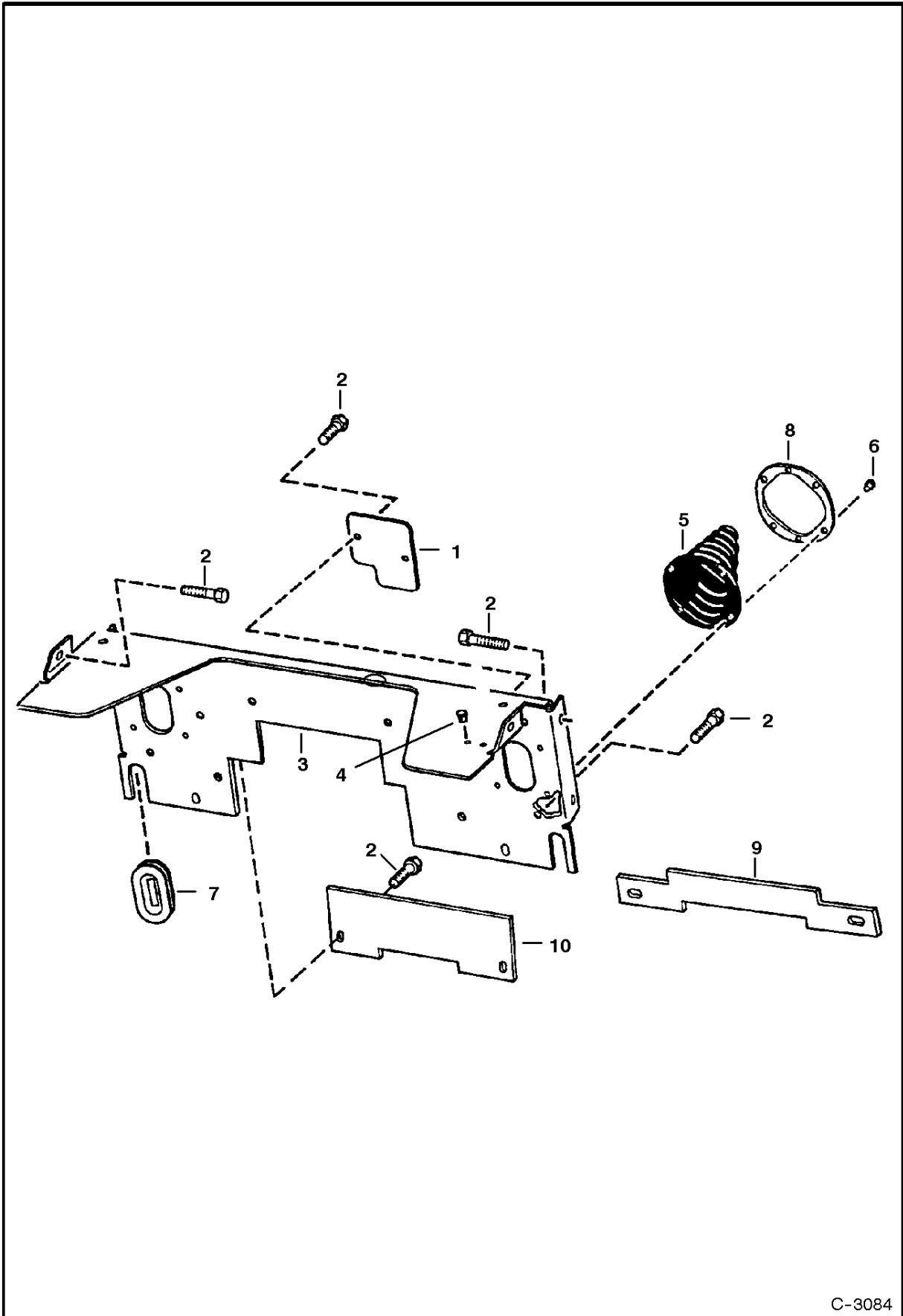


B-14720

SEAT

Ref.N°	Part N°	Description	Remarks	Serial N°	Qty.
1	6669135	SEAT	W/Ref. SEAT(2)-SEAT(7)		1
2	6670160	CUSHION	W/edging, clip & (2) grommets		1
2	NSS	EDGING			1
2	NSS	CLIP			1
3	NAP	TRACK	L.H. - W/10' (254 mm) Latch Was 6669088 [A]		1
3	6674013	TRACK	L.H. - W/8' (203,2 mm) Latch		1
4	6669089	TRACK	R.H. - W/O Latch		1
5	25G-512	BOLT	6669135 Seat uses (2) bolts		4
6	25G-520	BOLT			2
7	6672715	SPACER	Was 7000010 [A]		4
8	6668953	BRACKET	See S/L Dated 16 April 1996		2

PANELS

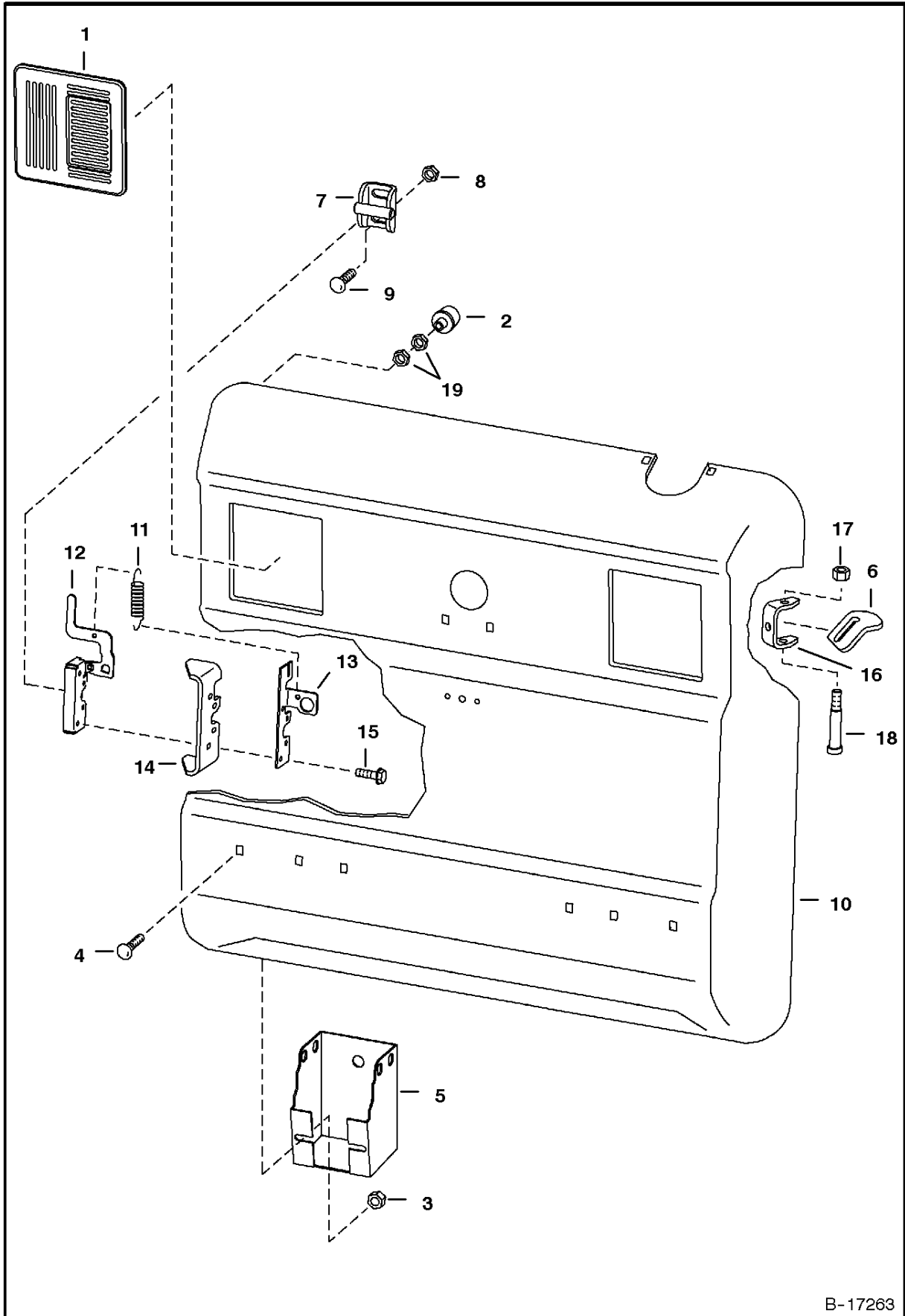


C-3084

PANELS

Ref.N°	Part N°	Description	Remarks	Serial N°	Qty.
1	6707316	PLATE			1
2	84G-3712	BOLT			18
3	NAP	SHIELD	Order (2) of Ref. PANELS(2) & (1) ea. of 6717208inD1 Shield & Ref. PANELS(10) Was 6706917 [A]		1
3	6717208	SHIELD			1
4	5289686	PLUG			2
5	6532127	BOOT	W/Ref. PANELS(8)		2
6	6630207	RIVET			12
7	6577961	GROMMET			2
8	NAP	PLATE	Order Ref. PANELS(5)		2
9	NAP	COVER	Order Ref. PANELS(10) - Was 6717890 [B]		1
10	6718446	COVER	5.25' x 13' (133,4 mm x 330,2 mm)		1

REAR DOOR

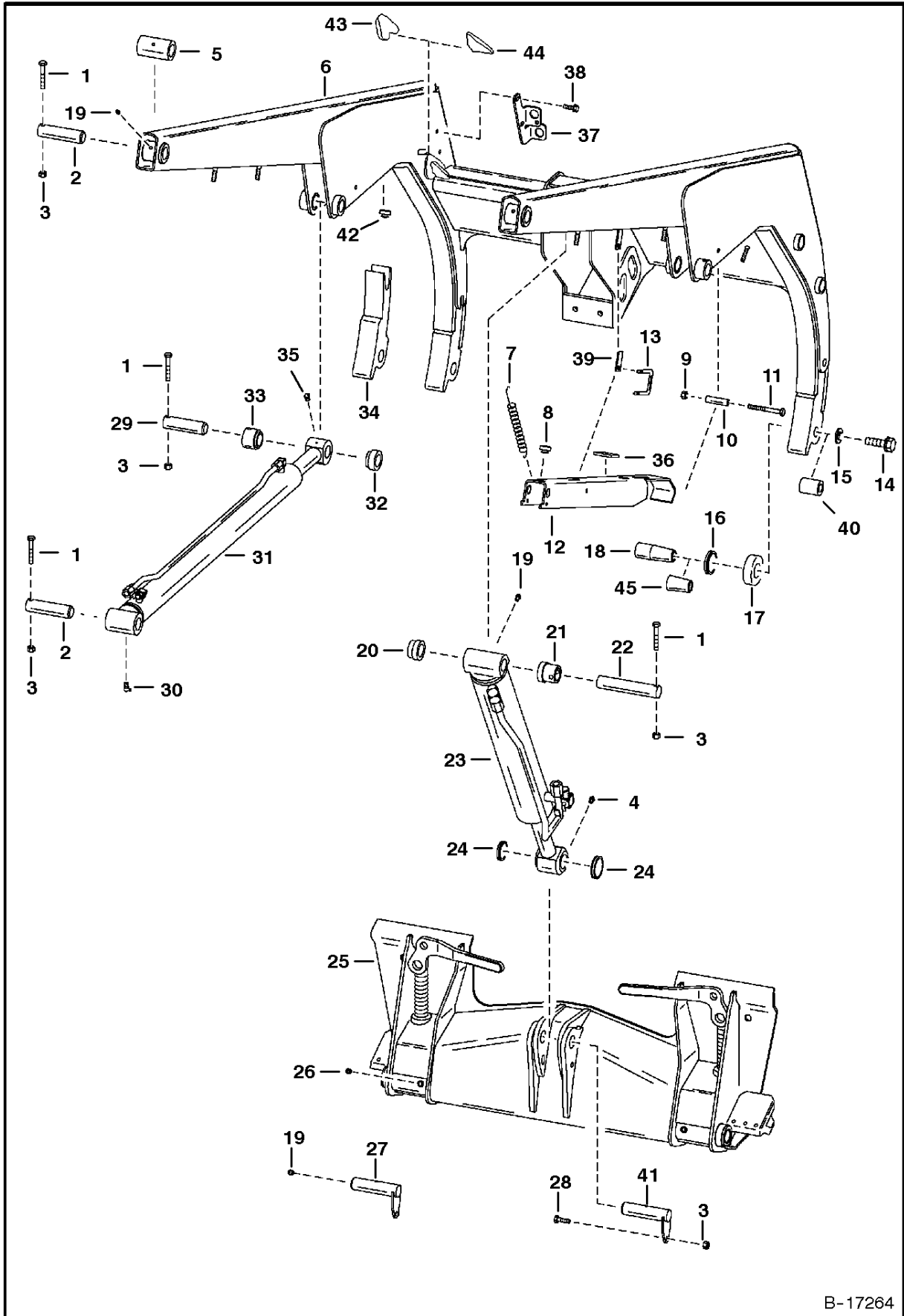


B-17263

REAR DOOR

Ref.N°	Part N°	Description	Remarks	Serial N°	Qty.
1	6670287	COVER	For Light Mount See Page LIGHT KIT(1)		2
2	NAP	BUMPER	Order 6655399 Bumper & (2) of Ref. REAR DOOR(19) - Was 6714454 [A]		2
2	6655399	BUMPER			2
3	55D-6	NUT			2
4	37C-612	BOLT			2
5	6715318	TOOL HOLDER	Was 6714064 [A]		1
6	6714126	DOOR STOP			1
7	6715157	STRIKER ASSY.	Was 6579969 [A]		1
8	57D-8	NUT	Was 83D-8 [B]		2
9	37C-820	BOLT	carriage		2
9	25G-820	BOLT	hex socket		2
10	6711524	REAR DOOR			1
11	6714210	SPRING			1
12	6670867	LATCH			1
13	6711664	GUIDE	latch		1
14	6711527	LATCH PLATE	weld-on		1
15	31C-420	BOLT			3
16	6711526	HINGE	weld on		2
17	59D-6	NUT			2
18	38C-856	BOLT			2
19	61D-5	NUT			2

LIFT ARM & BOB-TACH



B-17264

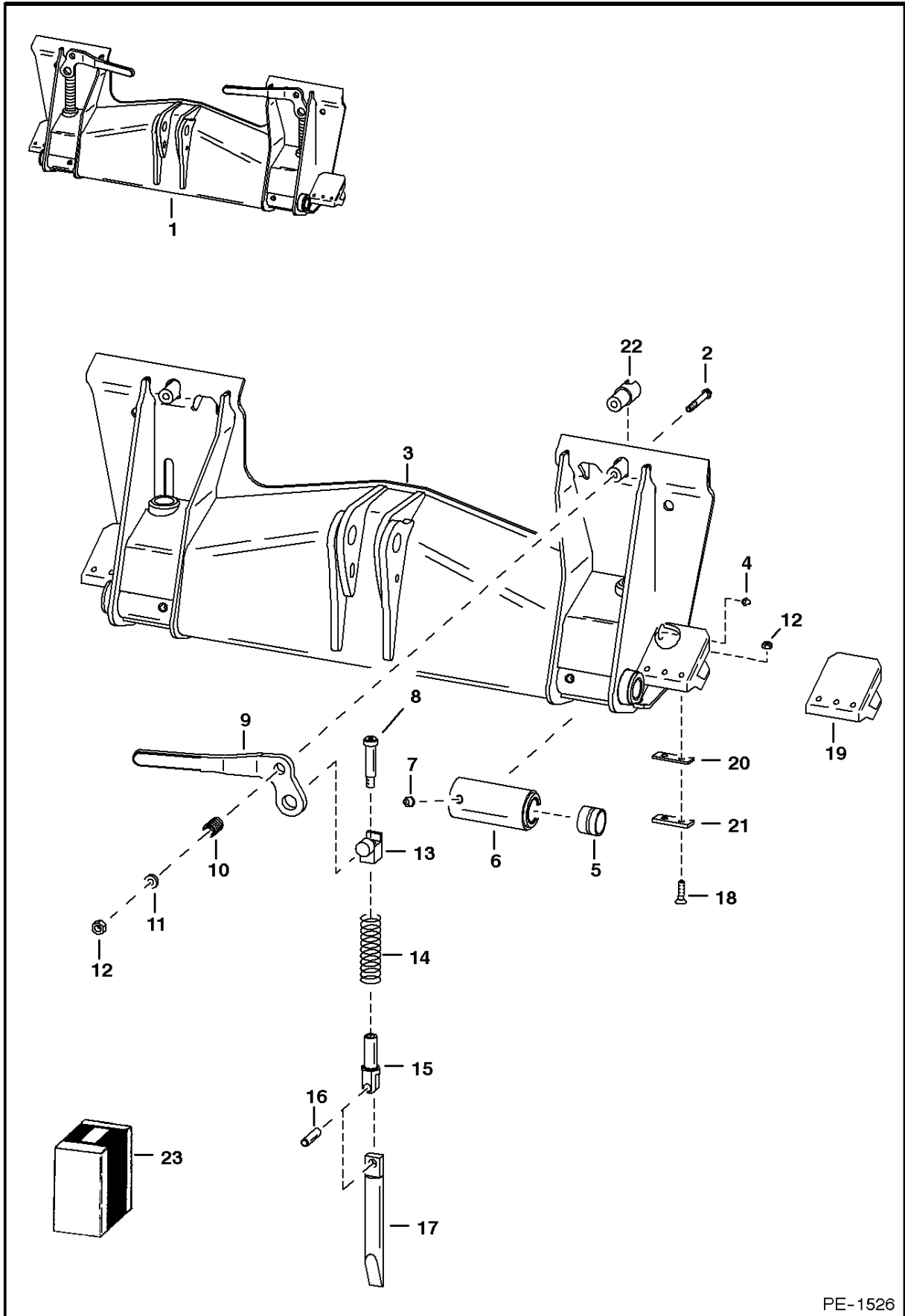
LIFT ARM & BOB-TACH

Ref.N°	Part N°	Description	Remarks	Serial N°	Qty.
1	17C-640	BOLT			8
2	6577954	PIN			4
3	85D-6	NUT			9
4	10H-35	GREASE ZERK			1
5	6578356	BUSHING	Weld On		2
6	NAP	LIFT ARM	1.25'(31,8 mm) dia. Bob-Tach pin - Order 6730797 Lift Arm & (2) ea. of Ref. LIFT ARM & BOB-TACH(15) (6560416 Washer) & Ref. LI		1
6	6730797	LIFT ARM	1.50'(38,1 mm) dia. Bob-Tach pin		1
7	6700743	SPRING			1
8	6519178	BUMPER	rubber		1
9	61D-6	NUT			1
10	6700469	SPACER			1
11	17C-648	BOLT			1
12	6705089	LIFT ARM STOP			1
13	6714810	PIN	retainer		1
14	31C-1064	BOLT	for 1.25'(31,8 mm) dia. Bob-tach pins - Was 17C-1064 [B]		2
14	31C-1264	BOLT	for 1.50'(38,1 mm) dia. Bob-Tach pins		2
15	6555455	WASHER	for 1.25'(31,8 mm) dia. Bob-tach pins		2
15	6560416	WASHER	for 1.25'(31,8 mm) dia. Bob-tach pins - Used W/Ref. LIFT ARM & BOB-TACH(45)		2
15	6718723	WASHER	for 1.50'(38,1 mm) dia. Bob-Tach pins		2
16	6651709	SEAL			2
17	6700039	CUP	seal - for 1.25'(31,8 mm) dia. Bob-tach pins		2
17	6700463	CUP	seal - for 1.50'(38,1 mm) dia. Bob-Tach pins		2
18	NAP	PIN	1.25'(31,8 mm) dia. x 4.00' (101,6mm) long - Order 6732012 Pin - Was 6707042 [A]		2
18	6732012	PIN	1.25'(31,8 mm) dia. x 3.88'(98,6 mm) long		2
18	6730263	PIN	1.50'(38,1 mm) dia.		2
19	10H-25	GREASE ZERK		& Bel	4
19	10H-25	GREASE ZERK		& Abv	3
20	6703363	BUSHING	Weld On - Also Order Ref. LIFT ARM & BOB-TACH(22)		1
21	6704287	BUSHING	Weld On - Also Order Ref. LIFT ARM & BOB-TACH(22)		1
22	6704288	PIN	1.25'(31,8 mm) dia. - 7'(177,8 mm) long		1
23		CYLINDER	tilt - See Page TILT CYLINDER(1) & TILT CYLINDER(1)		1
24	225855	SEAL	Use W/Ref. LIFT ARM & BOB-TACH(41)		2
25		BOB-TACH	See Page BOB-TACH(1)		1
26	743332	GREASE ZERK			2
27	6705223	PIN	W/grease zerk hole		1
28	17C-620	BOLT			1
29	6547593	PIN			2
30	11H-15	GREASE ZERK			2
31		CYLINDER	lift - See Page LIFT CYLINDER(1)		2
32	6555989	BUSHING	Weld On		2
33	6555987	BUSHING	Weld On		2
34	NAP	ARM	R.H. - Weld On		1
34	NAP	ARM	L.H. - Weld On		1
35	12H-15	GREASE ZERK			2
36	6704436	PAD	foam - self adhesive		1
37		MOUNT	See Page AUXILIARY HYDRAULICS(1)		1
38		BOLT	See Page AUXILIARY HYDRAULICS(1)		2
39	6705091	TAB	weld on		1
40	6714874	BUSHING	weld on - W/tapered hole		2
41	6716601	PIN	W/O grease zerk hole		1
42	6704403	STOP	weld on		2

LIFT ARM & BOB-TACH

Ref.N°	Part N°	Description	Remarks	Serial N°	Qty.
43	6727544	PLATE	weld on		2
44	6727545	PLATE	weld on		2
45	6731254	BUSHING	tapered - allows 1.25"(31,8 mm) dia. Bob-Tach pin to be used in 1.50"(38,1 mm) dia. Lift Arm hole		2

BOB-TACH

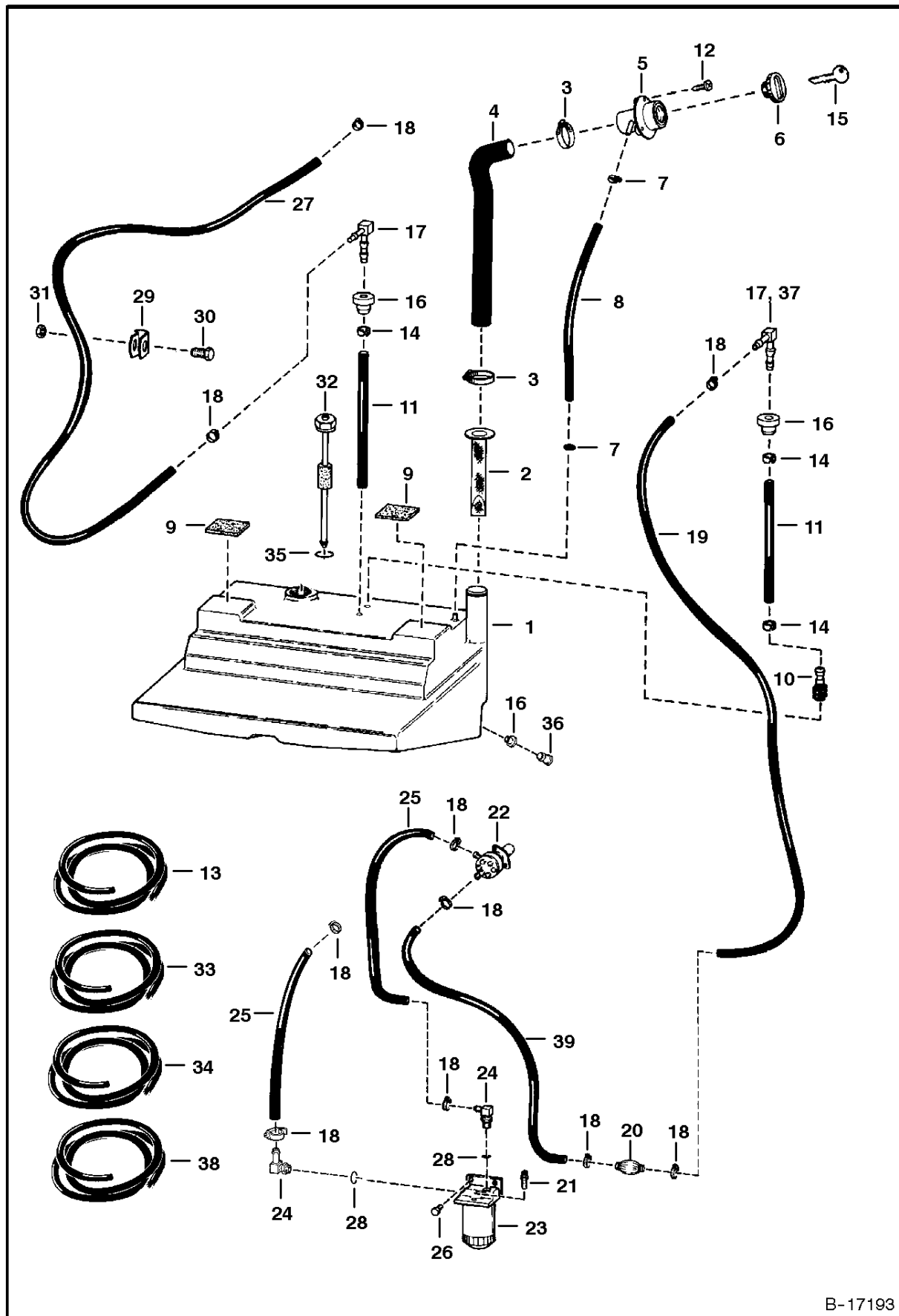


PE-1526

BOB-TACH

Ref.N°	Part N°	Description	Remarks	Serial N°	Qty.
1	6571744	BOB-TACH	Ref. BOB-TACH(2) - BOB-TACH(22) - Was SALES [D]		1
2	17C-660	BOLT			2
3	NAP	FRAME			1
4	10H-35	GREASE ZERK			2
5	6589665	BUSHING	Press Fit		2
6	6731243	BUSHING	Weld-on -W/Ref. BOB-TACH(5) - Was 6577445 [A]		2
7	743332	GREASE ZERK			2
8	6728473	SCREW	shoulder - Was 38C-1036 [A]		2
9	6702904	LEVER	R.H.		1
9	6702903	LEVER	L.H.		1
10	6713040	SPRING			2
11	619021	WASHER			2
12	85D-6	NUT			6
13	6704240	PIVOT ASSY			2
14	6562018	SPRING	Was 6578253 [A]		2
15	6704248	PIVOT	wedge		2
16	14J-5032	PIN			2
17	6704242	WEDGE ASSY.			2
18	6702958	BUSHING	weld on		2
19	6704600	STOP	R.H. - Weld on - Shown		1
19	6704601	STOP	L.H. - Weld on - Not shown		1
20	6707514	SHIM	.060		x
20	6579106	SHIM	.125		2
21	6579104	SHIM	.250		2
22	9G-620	BOLT			4
23	6724775	LEVER KIT	R.H. - Bob-Tach - Ref. BOB-TACH(2) & BOB-TACH(8) - BOB-TACH(17)		1
23	6724776	LEVER KIT	L.H. - Bob-Tach - Ref. BOB-TACH(2) & BOB-TACH(8) - BOB-TACH(17)		1

FUEL SYSTEM

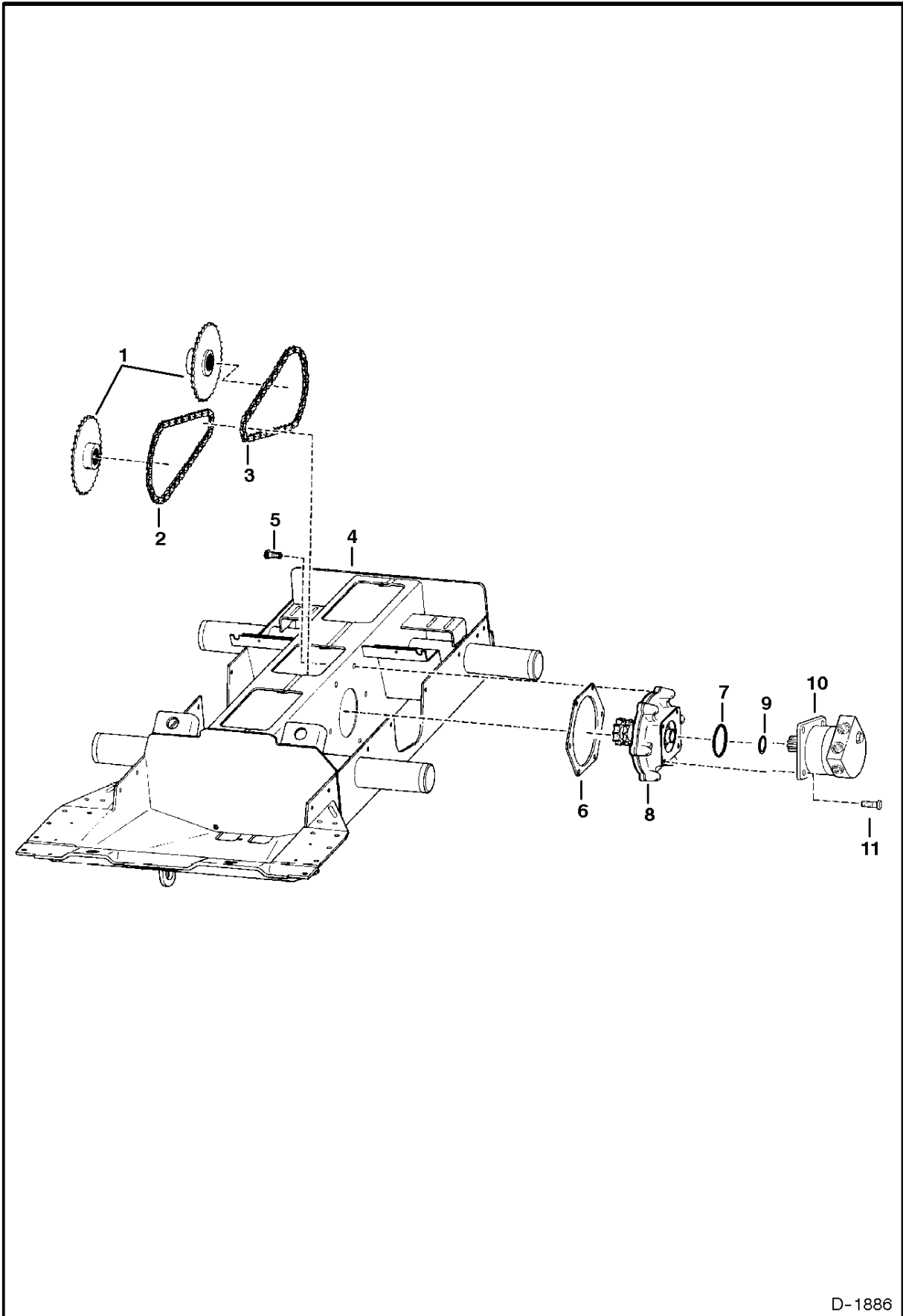


B-17193

FUEL SYSTEM

Ref.N°	Part N°	Description	Remarks	Serial N°	Qty.
1	NAP	TANK	Order 6717572 Tank, Ref. FUEL SYSTEM(16) (671740 2inD1l Bushing) & Ref. FUEL SYSTEM(36) (6717401in D1j Plug) -Was 6575897 [A]		1
1	6717572	TANK			1
2	6569219	SCREEN			1
3	42H-32	CLAMP			2
4	6706674	HOSE		& Bel	1
4	6710653	HOSE		& Abv	1
5	6701449	FILLER TUBE			1
6	6661114	CAP	green		1
6	NAP	CAP	locking - W/Ref. FUEL SYSTEM(15) Code GC020		1
6	6661696	FUEL CAP	locking - W/Ref. FUEL SYSTEM(15) Code PK510		1
7	42H-10	CLAMP			2
8	NAP	HOSE	25" (635,0 mm) long - Order Ref. FUEL SYSTEM(13)		1
9	6578278	PAD	self adhesive one side		2
10	6650239	SCREEN			1
11	6576386	HOSE	8.5'-9.5'(215,9 mm - 241,3 mm) long		2
12	6706517	SCREW			3
13	6578172	HOSE	bulk - Sold Per Foot		x
14	6661213	CLAMP			3
15	6654374	KEY	Code GC020		1
15	6587458	KEY SET	Code PK510		1
16	6553411	BUSHING	.5' I.D.		3
16	6717402	BUSHING	.75' I.D.		1
17	6598908	ELBOW			1
18	6515575	CLAMP			10
19	NAP	HOSE	35" (889,0 mm) long - Order Ref. FUEL SYSTEM(33)		1
20	6657734	PUMP	hand primer		1
21	6658180	PLUG	breather		1
22	6674170	FUEL PUMP	See Page INJECTION PUMP(1) - Was 6655216 [A]		1
23	6667353	FILTER ASSY			1
23	6667352	FILTER			1
23	72F-1	DRAIN COCK			1
24	6657083	ELBOW	W/Ref. 28 - flat boss face		2
24	6715183	ELBOW	W/Ref. 28 - tapered boss face		2
25	NAP	HOSE	13"(330,2 mm)long-Order Ref. FUEL SYSTEM(34) - connects to Ref. INJECTION PUMP(12) on Page INJECTION PUMP(1)		2
26	17C-512	BOLT			2
27	NAP	HOSE	44"(1118 mm) long-Order Ref. FUEL SYSTEM(38)		1
28	79K-5	O-RING	flat boss face		2
28	99K-5	O-RING	tapered boss face		2
29	30H-36	CLAMP			2
30	17C-612	BOLT			2
31	61D-6	NUT			1
32		SENSOR	fuel - W/Ref. FUEL SYSTEM(35) - See Page ENGINE ELECTRICAL CIRCUITRY(1)		1
33	6577821	HOSE	bulk - Sold Per Foot		x
34	6577822	HOSE	bulk - Sold Per Foot		x
35	79K-14	O-RING			1
35	6717579	GASKET	rubber		1
36	6599645	PLUG	fuel drain - .5' O.D.		1
36	6717401	PLUG	fuel drain - .75' O.D.		1
37	6661382	ELBOW			1
38	6578169	HOSE	bulk - Sold Per Foot		x
39	NAP	HOSE	18" (457,2 mm) - Order Ref. FUEL SYSTEM(33)		1

DRIVE TRAIN

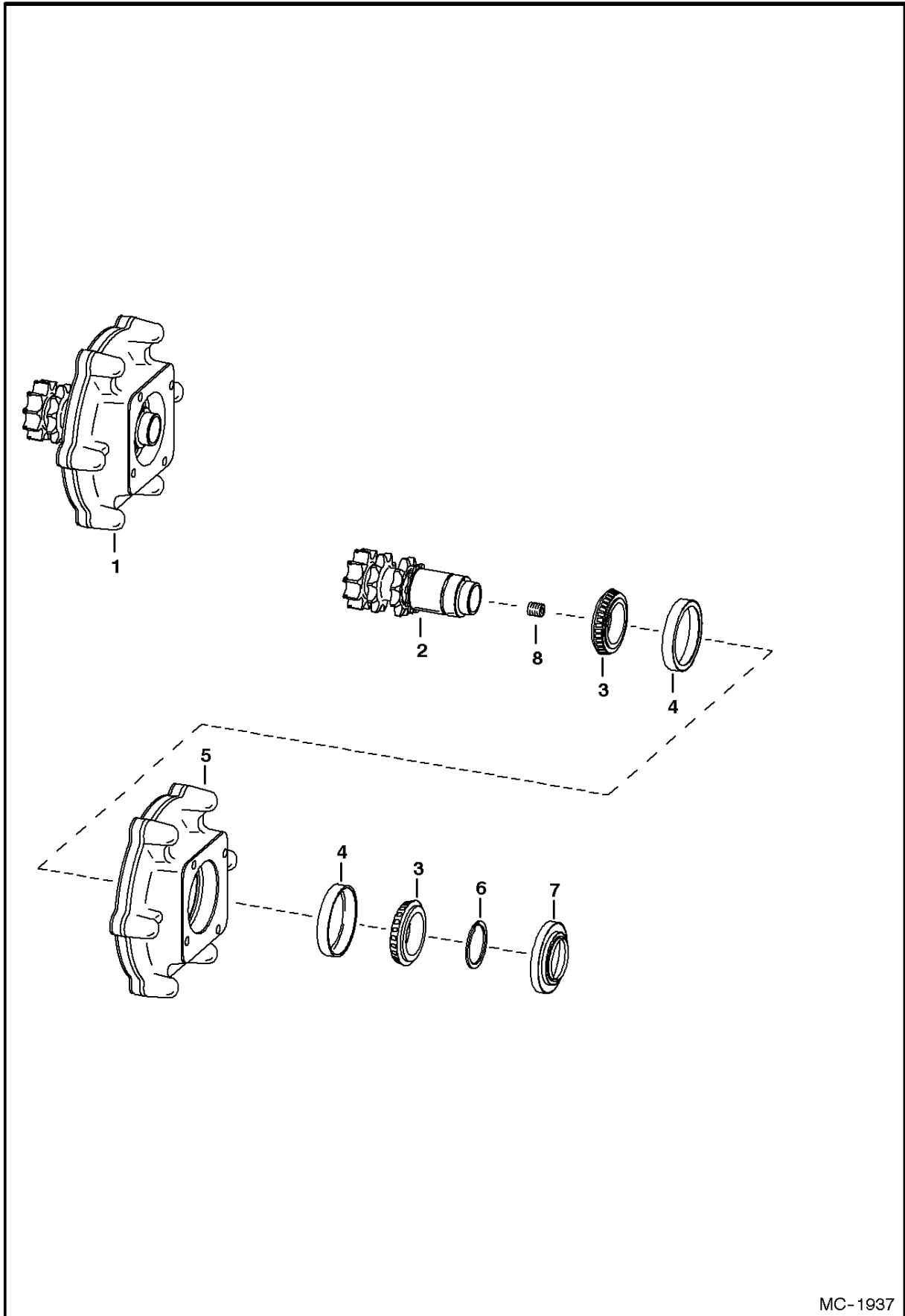


D-1886

DRIVE TRAIN

Ref.N°	Part N°	Description	Remarks	Serial N°	Qty.
1	6577204	SPROCKET			4
2	6579126	CHAIN	58 pitches-hour glass shaped link		2
2	6731219	CHAIN	58 pitches - oval shaped link		2
3	6579127	CHAIN	62 pitches-hour glass shaped link		2
3	6731218	CHAIN	62 pitches - oval shaped link		2
3	6510171	LINK	conn. - hour glass shape		x
3	6675332	LINK	conn. - oval shape		x
4	6712827	CHAINCASE			1
5	35C-1032	BOLT			12
6	6704878	GASKET	install W/Rib toward chaincase		2
7	25K-30508	O-RING			2
8	6705287	MOUNT ASSY.	drive motor - See Page MOTOR CARRIER(1)		2
9	25K-30202	O-RING	Supplied W/Motor		2
10		MOTOR	See Page HYDROSTATIC MOTOR(1) - W/Ref. DRIVE TRAIN(9)		2
11	73G-824	BOLT	Was 93G-824 [A]		8

**MOTOR CARRIER
(Drive Motor Mount Assy.)**

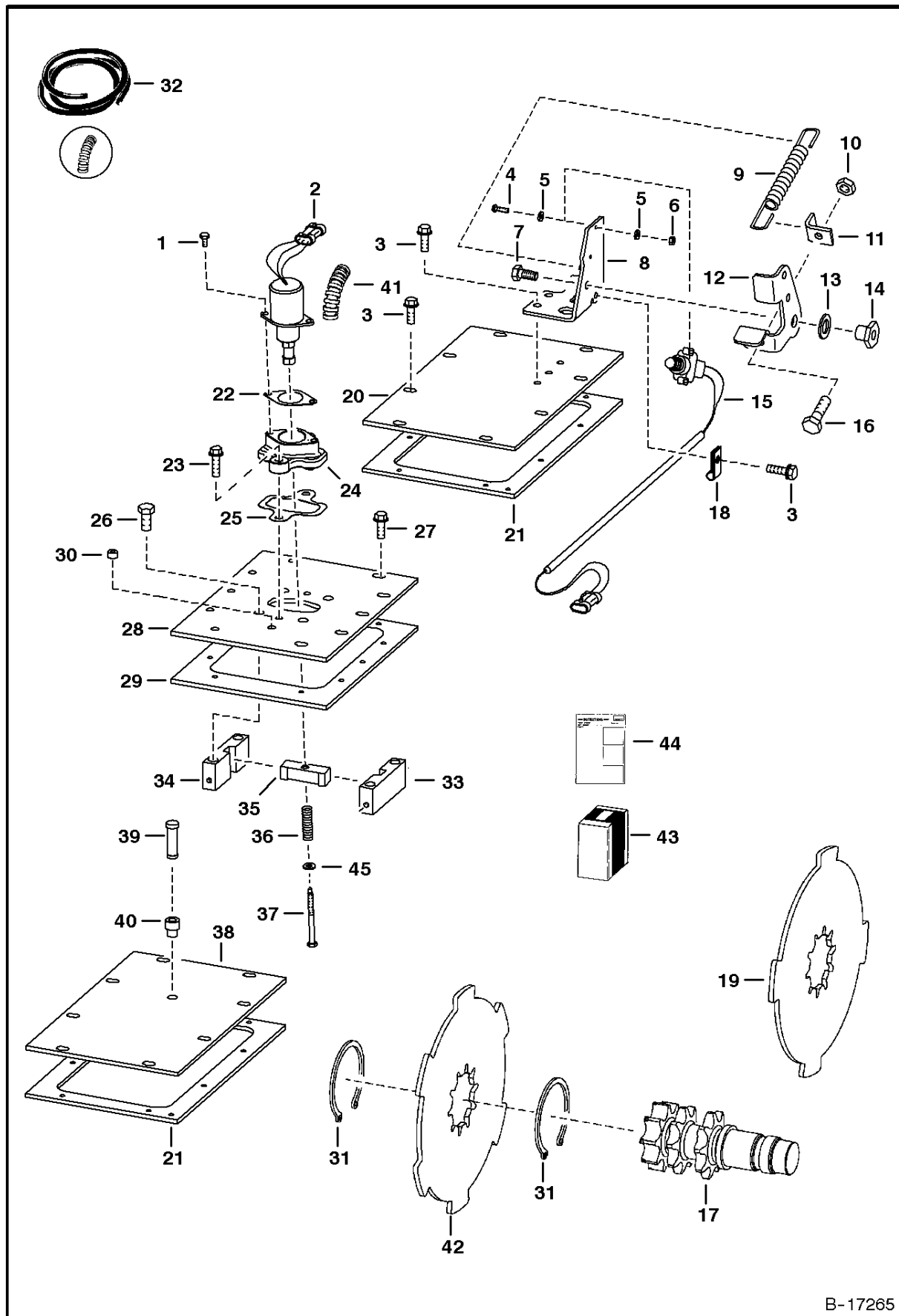


MC-1937

MOTOR CARRIER

Ref.N°	Part N°	Description	Remarks	Serial N°	Qty.
1	6712402	MOUNT ASSY.	drive motor - Ref. MOTOR CARRIER(2) - MOTOR CARRIER(7)		1
2	6713456	SHAFT	W/double snap ring groove		1
3	6632218	BEARING			2
4	6632541	RACE			2
5	6704492	HOUSING			1
6	6571851	SNAP RING	.118' (3,0 mm) thickness		1
6	6571852	SNAP RING	.125' (3,2 mm) thickness		1
7	6705847	SEAL			1
8	NSS	PLUG	Was 16F-6 [B]		1

DISC BRAKE

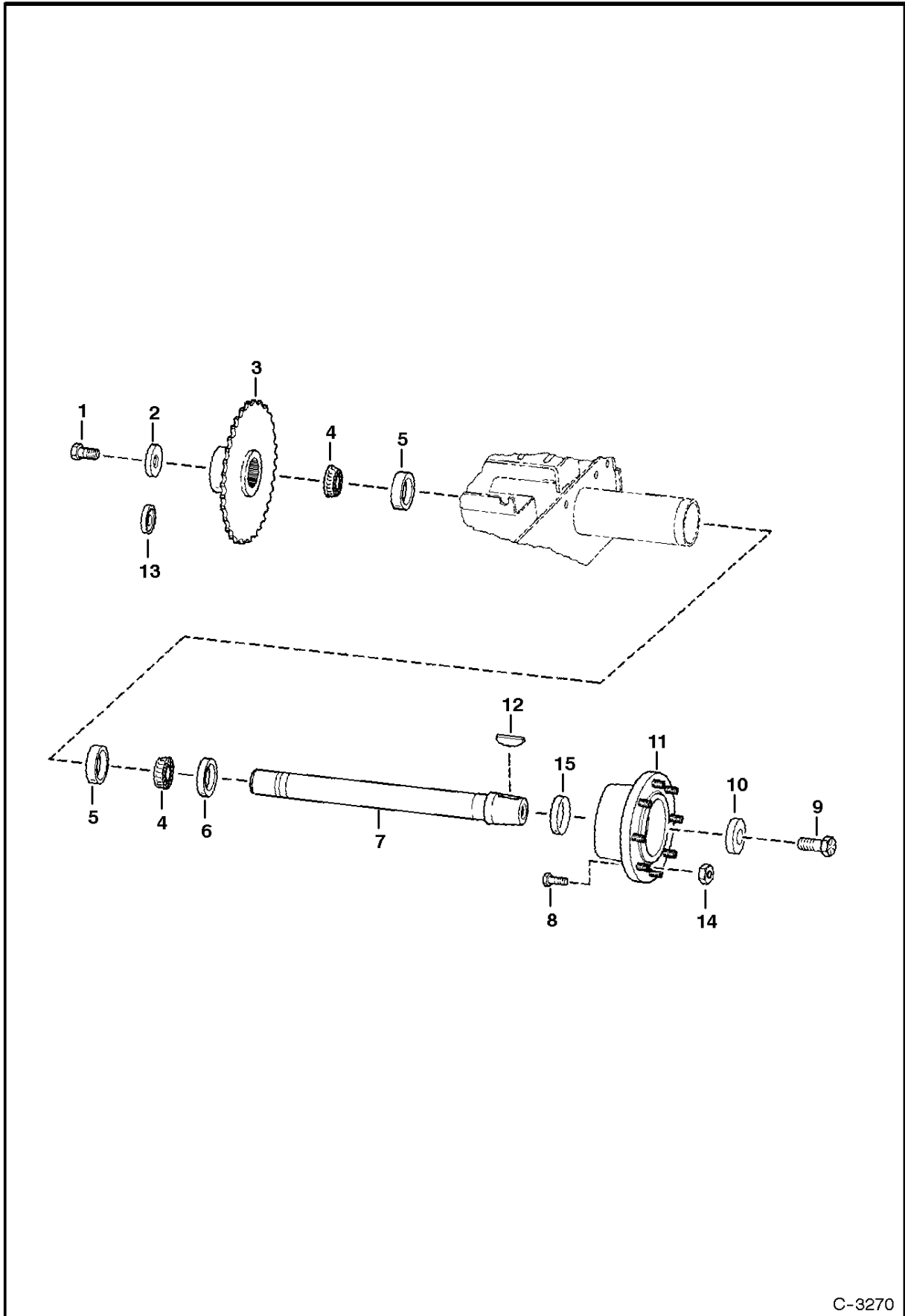


B-17265

DISC BRAKE

Ref.N°	Part N°	Description	Remarks	Serial N°	Qty.
1	17C-412	BOLT			2
2	6667992	SOLENOID	W/Ref. DISC BRAKE(41) - See S/L dated 18 April 1996		1
3	84G-3712	BOLT			18
4	23G-812	SCREW			2
5	25E-8	WASHER			4
6	12D-8	NUT			2
7	17C-610	BOLT			1
8	6707313	PEDAL MOUNT			1
9	6585860	SPRING			1
10	95D-6	NUT	Was 91D-6 [A]		2
11	6707315	ANGLE			1
12	6707314	PEDAL	brake		1
13	6700170	WASHER	plastic		2
14	6559479	NUT			1
15	6707337	SWITCH			1
16	17C-620	BOLT			2
17	6713456	SHAFT	See Page MOTOR CARRIER(1)		2
18	30H-23	CLAMP			1
19	NAP	BRAKE	disc - 4 lobe Order Ref. DISC BRAKE(43) - Was 67072 54 [A]		2
20	6578505	COVER			1
21	6703097	GASKET			2
22	6706737	GASKET			1
23	84G-3720	BOLT			2
24	6706718	MOUNT			1
25	6708016	GASKET			1
26	17C-820	BOLT			4
27	84G-3716	BOLT			10
28	6706042	COVER			1
29	6706968	GASKET			1
30	6544654	BUSHING	spacer		1
31	6658672	SNAP RING			4
32	6584978	CONDUIT	bulk - Sold Per Foot		x
33	6719056	BLOCK	guide - R.H. - Was 6705898 [A]		1
34	6719057	BLOCK	guide - L.H. - Was 6705897 [A]		1
35	6705896	GUIDE	4 lobe brake disc		1
35	6714278	WEDGE	6 lobe brake disc		1
36	6708018	SPRING			1
37	6708267	BOLT			1
38	6700330	COVER			1
39	6670627	BREATHER	See Page MAIN FRAME(1)		1
40	6553411	BUSHING			1
41	NAP	CONDUIT	5'(127 mm) long - Order Ref. DISC BRAKE(32)		1
42	6716228	BRAKE	disc - 6 lobe		2
43	6717734	KIT	6 lobe disc brake - Ref. DISC BRAKE(35) (6714278 Guide), Ref. DISC BRAKE(44) & (2) of Ref. DISC BRAKE(42)		1
44	6900805	INSTRUCTIONS			1
45	25E-13	WASHER			1

AXLE

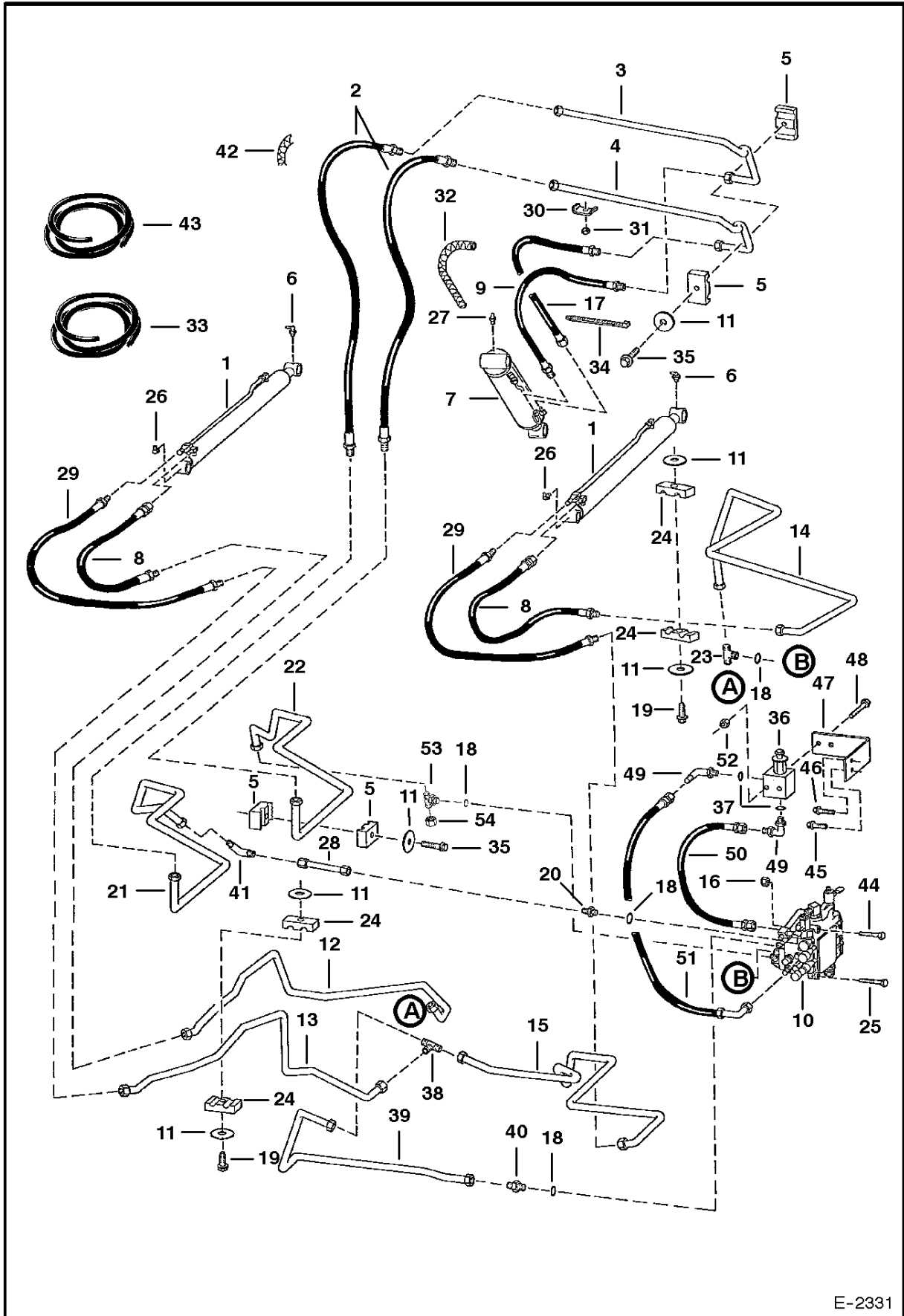


C-3270

AXLE

Ref.N°	Part N°	Description	Remarks	Serial N°	Qty.
1	18C-1224	BOLT			1
2	6552871	WASHER			1
3	6577204	SPROCKET			1
4	6519925	BEARING	Was 6669050 [A]		2
5	6634609	RACE			2
6	6658228	SEAL			1
7	6569465	AXLE			1
8	6709170	STUD	wheel		8
9	18C-1632	BOLT	2'(50,8 mm) long - For Ref. AXLE(7) W/1.5'(38,1 mm) deep threads		1
9	18C-1636	BOLT	2.25'(57,2 mm) long - For Ref. AXLE(7) W/1.65'(41,9 mm) deep threads		1
10	6716843	WASHER	recessed - Was 6569461 [A]		1
11	6578689	HUB			1
12	6J-1664	KEY			1
13	6662306	RING	wear - service part only		1
13	6722907	KIT	axle seal & wear sleeve - See Page AXLE SEAL KIT(1)		4
14	6564669	NUT	wheel		8
15	6563606	WASHER	recessed - Used to take up .005 or .010 end play on axle		1

HYDRAULIC CIRCUITRY (W/O Bucket Positioning Valve)



E-2331

**Thank you very much
for your reading.**

**Please click here and go
back to our website.**

**Then, you can download
the complete manual
instantly.**

No waiting.

Have questions.

Please write to me.

**All the problems will be answered
within 12 hours.**

aservicemanuapdf@yahoo.com