

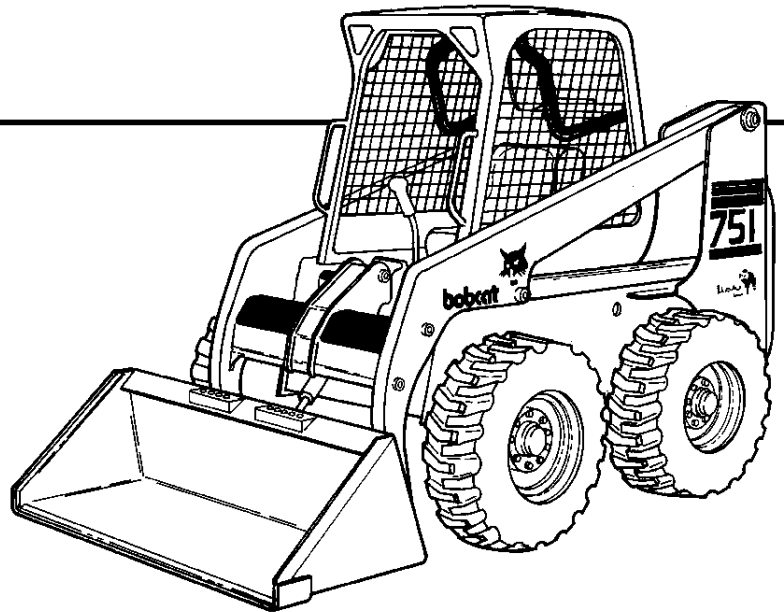
751



Bobcat®

G-SERIES
Parts
Manual

S/N 5157 30001 & Above
S/N 5156 20001 & Above



**EQUIPPED WITH
BOBCAT INTERLOCK
CONTROL SYSTEM (BICS™)**



Hello

Thank you very much for your download.

In the last page of this PDF document.

There is a link.

Please click on that link and return to our website.

Then you can get the complete manual immediately.

No need to wait.

Thanks for continuing to read the documentation.

Best wishes.

751 G-SERIES ALPHABETICAL INDEX

ADHESIVE	272	LATCH, REAR DOOR	22
AIR CLEANER	126	LEVER, PINTLE	82
ALTERNATOR	116, 118, 128	LIFT KITS	242, 243
ANTI-FREEZE	272	LIGHT KIT	245
AXLE	35	LIGHTS, FLASHER	222
BATTERY	100	LOCK, REAR DOOR	253
BELT, ALTERNATOR	128	LUBRICANT	272
BELT, PUMP DRIVE	132	MANIFOLD	155
BLOCK HEATER	174	MOUNT, ENGINE	128
BOB-TACH	24, 28	MOUNT, HYDRO. PUMP	128, 132
CAB	14, 16	MUFFLER	126
CAB DOOR	180, 188	OIL	272
CAB ENCLOSURE	193	OIL COOLER	80
CABLE, BATTERY	100	PAINT	272
CAMSHAFT	151, 152	PAN, OIL	148
CAP, FUEL	30	PANEL, INSTRUMENT	98
CAP, HYD. OIL	76	PEDALS, CONTROL	55
CAP, RADIATOR	122	PISTON, ENGINE	150
CHAIN, DRIVE	31	POLISH	272
CHAINCASE	12, 31	PUMP, FUEL	30, 159
COOLING FAN DRIVE ASSY.	138	PUMP, GEAR	93
COUNTER WEIGHTS	201, 202	PUMP, HYDRO.	86
CYLINDER BLOCK	143	PUMP, OIL	144
CYLINDER, LIFT	53	PUMP, WATER	153
CYLINDER, TILT	52	RIM, WHEEL	269
DIPSTICK, ENG. OIL	148	RING GEAR	132
DOOR, CAB	180, 188	SEALANT	272
DOOR, REAR	22	SEAT	19, 255
DRIVE MOUNT ASSY.	32	SEAT BELT	16, 256, 261
ENGINE	132, 140	SENDER, ENG. TEMP.	100
EXTINGUISHER	220	SENDER, FUEL	30
FAN	122	SENSOR, RPM	100
FILTER, AIR	164	SHOCK CONTROLS	82
FILTER, ENG. OIL	141	SOLENOID	100
FILTER, FUEL	30	SPROCKET, AXLE	31, 35
FILTER, HYD. OIL	80	STARTER	100, 120, 132
FIRE EXTINGUISHER	220	STOP, LIFT ARM	24
FLASHER LIGHTS	222	SWITCH, ENG. OIL PRESS.	100
FUEL SYSTEM	30	SWITCH, HYD. PRESS.	100
GAS SPRING	14, 180, 188	SWITCH, HYD. TEMP.	100
GASKET KIT, ENG.	140	SWITCH, IGNITION	98
GLOW PLUG	161	TANK, COOLANT	122
GUAGE, ENG. TEMP.	98	THERMOSTAT	154
GUAGE, FUEL	98	THROTTLE	136
HARNESS, CAB	98	VALVE COVER	145
HARNESS, CONTROLS	108	VALVE, ENGINE	146
HARNESS, ENGINE	100	VALVE, HYD. CONTROL	58, 62, 66
HARNESS, LIGHTS	245	WINDOW, REAR REMOVAL KIT ..	199
HEAD, CYLINDER	147	WINDOW, REAR	196, 208
HEATER	228, 232	WINDOW, SIDE	196
HORN	240	WIPER, WINDSHIELD	184
HUB, AXLE	35		
INJECTION NOZZLES	161, 162		

751 G-SERIES CONTENTS

MAIN FRAME	12-35
MAIN FRAME	12-13
OPERATOR CAB	14-17
SEAT & SEAT BAR	18-19
SEAT	20-21
PANELS	22-23
REAR DOOR	24-25
LIFT ARM & BOB-TACH	26-29
BOB-TACH	30-31
FUEL SYSTEM	32-35
DRIVE TRAIN	36-43
DRIVE TRAIN	36-37
MOTOR CARRIER	38-39
DISC BRAKE	40-41
AXLE	42-43
HYDRAULIC SYSTEM	44-83
HYDRAULIC CIRCUITRY	44-51
MANUAL LIFT RELEASE SYSTEM	52-53
AUXILIARY HYDRAULICS	54-57
TILT CYLINDER	58-59
LIFT CYLINDER	60-61
CONTROL PEDALS	62-63
HYDRAULIC CONTROL VALVE	64-71
* HYDRAULIC CONTROL VALVE	72-75
BICS CONTROL VALVE	76-77
MANUAL LIFT RELEASE VALVE	78-79
PRESSURE RELEASE VALVE	80-81
BUCKET POSITIONING VALVE	82-83
HYDROSTATIC SYSTEM	84-111
HYDROSTATIC CIRCUITRY	84-89
HAND CONTROLS	90-93
HYDROSTATIC MOTOR	94-95
HYDROSTATIC PUMP	96-103
GEAR PUMP	104-105
HYDROSTATIC OIL FILTER	106-111
ELECTRICAL SYSTEM	112-139
CAB ELECTRICAL CIRCUITRY	112-115
ENGINE ELECTRICAL CIRCUITRY	116-119
CONTROLS ELECTRICAL	120-131
ALTERNATOR	132-135
STARTER (NIPPONDENSO)	136-137
* STARTER (VALEO)	138-139
POWER UNIT	140-199
COOLING SYSTEM	140-143
ENGINE & ATTACHING PARTS	144-153
THROTTLE	154-155
COOLING FAN DRIVE ASSY.	156-157
ENGINE & GASKET KITS	158-159
GEARCASE	160-161
CRANKCASE	162-163
ROCKER ARM COVER	164-165
VALVE ROCKER ARM	166-167
CYLINDER HEAD	168-169
OIL PAN	170-171

751 G-SERIES CONTENTS (Cont'd)

POWER UNIT (CONT'D)	140-199
PISTON & CRANKSHAFT	172-173
FUEL CAMSHAFT	174-175
CAMSHAFT	176-177
WATER PUMP	178-179
WATER FLANGE & THERMOSTAT	180-181
MANIFOLDS	182-183
ENGINE STOP LEVER	184-185
GOVERNOR	186-187
SPEED CONTROL PLATE	188-189
INJECTION PUMP	190-193
INJECTOR NOZZLES	194-195
INJECTOR HOLDER	196-197
AIR CLEANER	198-199
ACCESSORIES & OPTIONS	203-336
ACCESS COVER	203-204
ACCESSORIES HARNESS	205-206
AIR DEFLECTOR KIT	207-208
AXLE SEAL KIT	209-210
BACK-UP ALARM	211-212
BEACON	213-214
BLOCK HEATER	215-216
BOB-TACH LEVERS	217-218
BUCKET POSITIONING VALVE KIT	219-220
CAB DOOR	221-234
CAB ENCLOSURE	235-238
CAB WINDOWS	239-244
COUNTERWEIGHT KIT	245-248
DECALS	249-252
DELUXE CAB	253-254
ELECTRICAL CONNECTOR KIT	255-256
ELECTRICAL CONTROLS KIT	257-262
ENGINE MOUNT KIT	263-264
EUROPEAN ACCESSORIES	265-266
FIRE EXTINGUISHER	267-268
F.O.P.S. KIT	269-270
FLASHER LIGHTS	271-272
HAND CONTROL KIT	273-276
HEATER KIT	277-280
HEATER	281-288
HEATER PLUMBING KIT	289-290
* HEATER PLUMBING KIT	291-292
HORN KIT	293-294
LIFT KIT	295-298
LIGHT KIT	299-300
MUFFLER/PURIFIER KIT	301-302
RADIATOR SCREEN KIT	303-304
REAR AUXILIARY KIT	305-306
REAR AUXILIARY VALVE	307-308
REAR DOOR LOCK	309-310
REAR WIPER	311-312
SEAT	313-316
SEAT BELT	317-322
SOUND KIT	323-324
SOUND OPTION	325-326

751 G-SERIES CONTENTS (Cont'd)

ACCESSORIES & OPTIONS (CONT'D)	203-336
SOUND REDUCTION HARDHAT	327-328
STROBE LIGHT	329-330
TIRES & RIMS	331-334
BULK ITEMS	335-336
NUMERICAL INDEX	337
NUMERICAL INDEX	337

751 G-SERIES CONTENTS

MAIN FRAME	12-35
MAIN FRAME	12-13
OPERATOR CAB	14-17
SEAT & SEAT BAR	18-19
SEAT	20-21
PANELS	22-23
REAR DOOR	24-25
LIFT ARM & BOB-TACH	26-29
BOB-TACH	30-31
FUEL SYSTEM	32-35
DRIVE TRAIN	36-43
DRIVE TRAIN	36-37
MOTOR CARRIER	38-39
DISC BRAKE	40-41
AXLE	42-43
HYDRAULIC SYSTEM	44-83
HYDRAULIC CIRCUITRY	44-51
MANUAL LIFT RELEASE SYSTEM	52-53
AUXILIARY HYDRAULICS	54-57
TILT CYLINDER	58-59
LIFT CYLINDER	60-61
CONTROL PEDALS	62-63
HYDRAULIC CONTROL VALVE	64-71
* HYDRAULIC CONTROL VALVE	72-75
BICS CONTROL VALVE	76-77
MANUAL LIFT RELEASE VALVE	78-79
PRESSURE RELEASE VALVE	80-81
BUCKET POSITIONING VALVE	82-83
HYDROSTATIC SYSTEM	84-111
HYDROSTATIC CIRCUITRY	84-89
HAND CONTROLS	90-93
HYDROSTATIC MOTOR	94-95
HYDROSTATIC PUMP	96-103
GEAR PUMP	104-105
HYDROSTATIC OIL FILTER	106-111
ELECTRICAL SYSTEM	112-139
CAB ELECTRICAL CIRCUITRY	112-115
ENGINE ELECTRICAL CIRCUITRY	116-119
CONTROLS ELECTRICAL	120-131
ALTERNATOR	132-135
STARTER (NIPPONDENSO)	136-137
* STARTER (VALEO)	138-139
POWER UNIT	140-199
COOLING SYSTEM	140-143
ENGINE & ATTACHING PARTS	144-153
THROTTLE	154-155
COOLING FAN DRIVE ASSY.	156-157
ENGINE & GASKET KITS	158-159
GEARCASE	160-161
CRANKCASE	162-163
ROCKER ARM COVER	164-165
VALVE ROCKER ARM	166-167
CYLINDER HEAD	168-169
OIL PAN	170-171

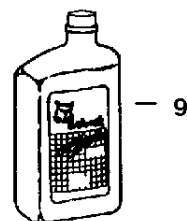
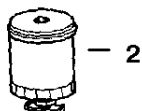
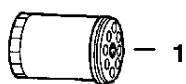
751 G-SERIES CONTENTS (Cont'd)

POWER UNIT (CONT'D)	140-199
PISTON & CRANKSHAFT	172-173
FUEL CAMSHAFT	174-175
CAMSHAFT	176-177
WATER PUMP	178-179
WATER FLANGE & THERMOSTAT	180-181
MANIFOLDS	182-183
ENGINE STOP LEVER	184-185
GOVERNOR	186-187
SPEED CONTROL PLATE	188-189
INJECTION PUMP	190-193
INJECTOR NOZZLES	194-195
INJECTOR HOLDER	196-197
AIR CLEANER	198-199
ACCESSORIES & OPTIONS	203-336
ACCESS COVER	203-204
ACCESSORIES HARNESS	205-206
AIR DEFLECTOR KIT	207-208
AXLE SEAL KIT	209-210
BACK-UP ALARM	211-212
BEACON	213-214
BLOCK HEATER	215-216
BOB-TACH LEVERS	217-218
BUCKET POSITIONING VALVE KIT	219-220
CAB DOOR	221-234
CAB ENCLOSURE	235-238
CAB WINDOWS	239-244
COUNTERWEIGHT KIT	245-248
DECALS	249-252
DELUXE CAB	253-254
ELECTRICAL CONNECTOR KIT	255-256
ELECTRICAL CONTROLS KIT	257-262
ENGINE MOUNT KIT	263-264
EUROPEAN ACCESSORIES	265-266
FIRE EXTINGUISHER	267-268
F.O.P.S. KIT	269-270
FLASHER LIGHTS	271-272
HAND CONTROL KIT	273-276
HEATER KIT	277-280
HEATER	281-288
HEATER PLUMBING KIT	289-290
* HEATER PLUMBING KIT	291-292
HORN KIT	293-294
LIFT KIT	295-298
LIGHT KIT	299-300
MUFFLER/PURIFIER KIT	301-302
RADIATOR SCREEN KIT	303-304
REAR AUXILIARY KIT	305-306
REAR AUXILIARY VALVE	307-308
REAR DOOR LOCK	309-310
REAR WIPER	311-312
SEAT	313-316
SEAT BELT	317-322
SOUND KIT	323-324
SOUND OPTION	325-326

751 G-SERIES CONTENTS (Cont'd)

ACCESSORIES & OPTIONS (CONT'D)	203-336
SOUND REDUCTION HARDHAT	327-328
STROBE LIGHT	329-330
TIRES & RIMS	331-334
BULK ITEMS	335-336
NUMERICAL INDEX	337
NUMERICAL INDEX	337

MAINTENANCE ITEMS MODEL 751 G-Series



Ref.	Part Number	Description	Remarks	Page
1	6675517	FILTER	Engine Oil (6 Pack)	160
2	6667352	ELEMENT	Fuel	32
3	6598362	CARTRIDGE	Inner Air Cleaner	198
4	6598492	CARTRIDGE	Outer Air Cleaner	198
5	6646678	CAP	Radiator	140
6	6661248	ELEMENT	Hydrostatic # 3 Media	108
7	6674687	BATTERY		116

(HYDRAULIC —RESERVOIR CAPACITY) 14.0 QTS. (13,2 L.)

(HYDRAULIC/HYDROSTATIC SYSTEM) 6.0 GALS. (23 L.)

8	6563328	FLUID	Hyd./Hydro. Fluid - (2) 2.5 Gal. - (5 Gal.)	335
	6722344	FLUID	Hyd./Hydro. Fluid - (5 Gal.)	335
	6563330	FLUID	55 Gallon Drum	335

(ENGINE OIL W/FILTER CAPACITY) 7.5 QTS. (7,1 L.)

9	6657301	MOTOR OIL	10W30 CE/SG - 1 Qt.	335
	6724557	MOTOR OIL	10W30 CE/SG - 1 Gallon	335
	6674205	MOTOR OIL	10W30 CE/SG - 2.5 Gal.	335
	6657299	MOTOR OIL	15W40 CE/SG - 1 Qt.	335
	6724558	MOTOR OIL	15W40 CE/SG - 1 Gallon	335
	6674204	MOTOR OIL	15W40 CE/SG - 2.5 Gal.	335
	6657303	MOTOR OIL	30 CE/SG - 1 Qt.	335
	6724559	MOTOR OIL	30 CE/SG - 1 Gallon	335
	6674206	MOTOR OIL	30 CE/SG - 2.5 Gal.	335

GENERAL INFORMATION

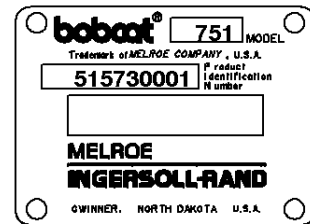
When using the machine serial number, use the complete number. When Serial Numbers do not appear below the page heading, parts information applies to all loaders.

Some Serial Number breaks are not available at time of printing. These are listed as & Below or & Above.

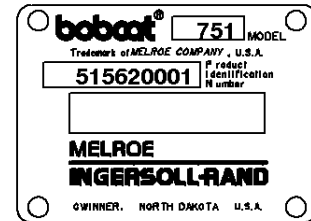
The number shown in the quantity column in this manual is the number of parts needed for the illustration on the page. For some parts an "x" will be shown in the quantity column. This "x" indicates that the quantity to be used is "As Needed".

When references L.H. and R.H. are used in this manual, it is done from the operator's seat in the forward operating position.

Some of the illustrations and information found in this parts manual were supplied to Bobcat by machine component companies.



DOMESTIC



EXPORT

ABBREVIATIONS & SYMBOLS

- SALES** = Order from Gwinner Sales Department
- NSS** = Not Serviced Separately
- NAP** = Not Available as Parts
- *** = Changed or Added Sections, Pages or Part Number

Disposition Code Definition (Found in the Remarks Column)

- [A]** = Use Up
- [B]** = Use Up on Other Application (See PNI)
- [C]** = File PDR Report With Bobcat Parts Sales
- [D]** = Part Number Error

Explications en francais	Grid Nb	3
Erklärungen auf deutsch	Grid Nb	4
Spiegazioni in italiano	Grid Nb	5
Explicaciones en espanol	Grid Nb	6
Verklaring in het Nederlands	Grid Nb	7

NOTE D'INFORMATION

Pour toute référence au numéro de série de l'engin, toujours donner le numéro complet.

Le chiffré apparaissant dans la colonne des quantités de ce manuel représentent le nombre de pièces nécessaires pour l'illustration reprise sur la page. Dans certains cas, on lira un "x" dans la colonne des quantités. Cet "x" indique que la quantité nécessaire est "selon besoin".

Pour toute référence vers la GAUCHE ou la DROITE dans ce manuel, considérer que la personne se trouve assise dans le siège de l'opérateur, en position de fonctionnement en marche avant.

Certaines illustrations et informations reprises dans ce manuel de pièces de rechange ont été fournies à Bobcat par des fabricants de composants.

ABREVIATIONS & SYMBOLES

SALES	= Commander au Service Ventes à Bruxelles
NSS	= Pas vendu séparément
NAP	= Non disponible comme pièce de rechange
*	= Chapitre, page ou numéro de pièce modifié ou supplémentaire
BTI	= Bobcat Technical Information Bulletin : voir à la fin de la microfiché du modèle concerné ou la microfiche générale reprenant l'ensemble des "BTI".
was 6535403	= était avant 6535403
adj. (adjustment)	= réglage
Assembly	= ensemble
available W/Ref.	= disponible avec réf.
bulk/sold per foot	= en vrac/vendu par pied
does not include	= ne comprend pas
included with	= compris dans
I.D.	= D.I. (diamètre intérieur)
O.D.	= D.E. (diamètre extérieur)
not in kit	= pas en kit
W/ - WO/	= inclus/ - non inclus/
Qty	= quantité requise
see page/ref.	= voir page/réf.
used with ref/	= utilisé avec réf.
0,05 inch thickness	= 0,05 pouce d'épaisseur (un pouce = 25.4 mm)
weld on	= à souder

ALLGEMEINE INFORMATIONEN

Bei Angabe der Maschinen-Seriennummer stets die komplette Nummer angeben.

Bei der in der Mengenspalte (Anzahl) in diesem Handbuch angegebenen Zahl handelt es sich um die Anzahl von Teilen, die für die Abbildung auf der betreffenden Seite benötigt werden. Bei manchen Teilen in der Mengenspalte ist ein "x" angegeben. Dieses "x" weist darauf hin, dass sich die Anzahl der verwendeten Teile auf den "Bedarf" bezieht.

Bei Verwendung der Seitenangaben links und rechts in diesem Handbuch gelten diese für die Blickrichtung vom Fahrersitz aus, und zwar in Vorwärts-Betriebsrichtung.

Einige der in diesem Ersatzteilhandbuch aufgeführten Abbildungen und Informationen wurden der Bobcat von den Herstellern von Maschinenbauteilen zur Verfügung gestellt.

ABKÜRZUNGEN UND SYMBOLE

SALES	= Bestellung bei der Verkaufsabteilung in Brüssel
NSS	= Nicht einzeln erhältlich
NAP	= Nicht als Ersatzteil erhältlich
*	= Geänderte oder hinzugefügte Abschnitte, Seiten oder Teilenummern
BTI	= Bobcat Technical Information Bulletin : Siehe am Ende der Mikrokarte des jeweiligen Modells oder der allgemeinen Mikrokarte der BTI.
was 6535403	= War 6535403
adj.	= Einstellung
Assembly	= Baugruppe
available W/Ref.	= erhältlich mit der Referenz
bulk/sold per foot	= Mengenabnahme / Verkauf pro Fuss
does not include	= beinhaltet nicht
included with	= enthalten in
I.D.	= Innendurchmesser
O.D.	= Aussendurchmesser
not in kit	= nicht in Bausatz
W/ - WO/	= mit/ - ohne/
Qty	= Anzahl
see page/ref.	= Siehe Seite / Referenz
used with ref.	= verwendet mit Referenz
0.05 inch thickness	= Dicke : 0.05 Zoll (ein Zoll = 25.4 mm)
weld on	= anschweißen

INFORMAZIONI GENERALI

Quando si usa il numero di serie della macchina usare il numero completo.

Il numero mostrato nella colonna della quantità di questo manuale corrisponde al numero di componenti necessari per l'illustrazione della pagina. Per alcuni componenti appare "X" nella colonna delle quantità. Questa "X" indica che la quantità da usare è "come necessario".

See in questo manuale si fa riferimento alla parte destra o sinistra, si intende dal sedile dell'operatore nella posizione in avanti di funzionamento.

Alcune delle illustrazioni e informazioni trovate in questo manuale di componenti sono state fornite alla Bobcat da società di componenti di macchine.

SIMBOLI E ABBREVIAZIONI

SALES	= Ordinare al servizio vendite di Bruxelles
NSS	= Non vendute separatamente
NAP	= Non disponibile come componente
*	= Sezioni, pagine o numeri di componente cambiati o aggiunti
BTI	= (Bobcat Technical information) Ved. al termine del microfiche del modello relativo oppure microfiche generale
was 6535403	= era 6535403
adj. (adjustment)	= regol. (regolazione)
Assembly	= Complessivo
available W/Ref.	= disponibile con rif.
bulk/sold per foot	= alla rinfusa/venduto al piede
does not include	= non comprende
Included with	= compreso con
I.D.	= d. i.
O.D.	= d. e.
not in kit	= non fa parte del kit
W/ - WO/	= con - senza
Qty	= Qtà
see page/ref	= ved. pagina/rif.
used with ref.	= usato con il rif.
0,05 inch thickness	= spessore 0,05 pollici (un pollice = 25,4 mm)
weld on	= a saldare

INFORMACION GENERAL

Al utilizar el número de serie de la máquina, debe emplearse el número completo.

El número que figura en la columna de "Unidades" en este manual es el número de piezas que se necesitan para la ilustración que consta en la página. En algunas piezas aparece una "x" en la columna de "Unidades". Esta "x" indica que las unidades a utilizar son "según sea necesario".

Cuando se empleen las referencias izq. y dcha., éstas se entienden mirando desde el asiento del conductor, en posición de marcha adelante.

Algunas de las ilustraciones y la información que figuran en este manual de piezas han sido facilitadas a Bobcat por empresas de componentes de máquinas.

ABREVIATURAS Y SIMBOLOS

VENTAS	= Pedido al Departamento de Ventas de Bruselas
NSS	= No se vende por separado
NAP	= No disponible como pieza de repuesto
*	= Secciones, páginas o referencias modificadas o añadidas
BTI	= (Bobcat Technical Information) Ver al final de la microficha del modelo afectado o en la microficha general "Boletín de Información Técnica Bobcat".
was 6535403	= era anteriormente el 6535403
adj. (adjustment)	= ajuste
assembly	= conjunto
available W/Ref.	= disponible con la ref.
bulk/sold per foot	= a granel/vendido por pies
does not include	= no incluye
included with	= incluido en
I.D.	= diámetro interior
O.D.	= diámetro exterior
not in kit	= no en el kit
W/ - WO/	= con/ - sin
Qty	= Unidades
see page /ref.	= ver página/ref.
used with ref.	= empleado con la ref.
0,05 inch thickness	= 0,05 pulgadas de espesor (1 pulgada = 25,4 mm)
weld on	= debe ser soldado

ALGEMENE INFORMATIE

Als u het serienummer van de machine gebruikt, geef dan het gehele serienummer.

Het cijfer dat voorkomt in de kolom "Aantal", in deze handleiding, is het aantal onderdelen dat nodig is van de illustratie op de pagina. Voor sommige onderdelen staat er een "x" in de kolom "Aantal". Deze "x" betekent dat er een aantal "zoals nodig" vereist is.

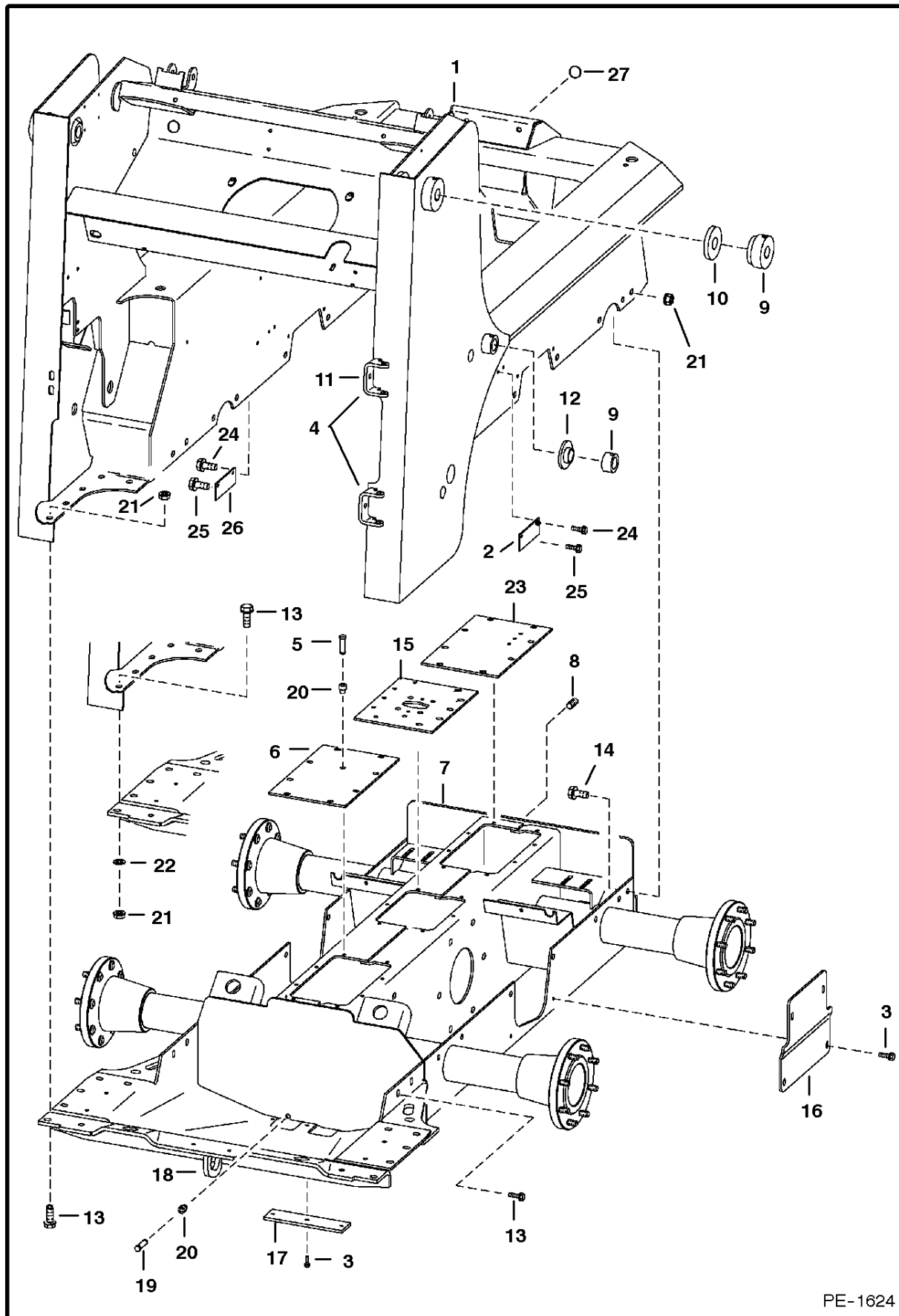
Wanneer er in deze handleiding naar "links" en naar "rechts" gerefereerd wordt, moet dit verstaan worden voor een bestuurder die in de bestuurdersstoel zit in de voorwaartse bedrijfsstand.

Sommige van de illustraties en informatie in deze onderdelen-handleiding werden door firma's van machine-componenten geleverd aan Bobcat.

AFKORTINGEN EN SYMBOLEN

SALES	= Bestellen bij de Verkoopafdeling te Brussel
NSS	= Niet afzonderlijk te verkrijgen
NAP	= Niet beschikbaar als onderdeel
*	= Gewijzigde of toegevoegde paragrafen, pagina's of onderdeelnummers
BTI	= Bobcat Technical Information Bulletin : Zie einde van de microfiche van het desbetreffende model of einde van de algemene microfiche die het geheel van alle "BTI" herneemt.
was 6535403	= was vroeger 6535403
adj. (adjustment)	= afstelling
Assembly	= geheel
available W/Ref.	= beschikbaar met ref.
bulk/sold per foot	= bulk/aan de meter verkocht
does not include	= bevat niet
includes with	= is bevat in
I.D.	= ϕ inw. (inwendige diameter)
O.D.	= ϕ uitw. (uitwendige diameter)
not in kit	= niet in de kit
W/ - WO/	= met/ - zonder/
Qty	= vereiste aantal
see page/ref.	= zie pagina/ref.
used with ref/	= gebruikt met ref.
0,05 inch thickness	= 0.05 inch dik (een inch = 25.4 mm)
weld on	= te lassen

MAIN FRAME

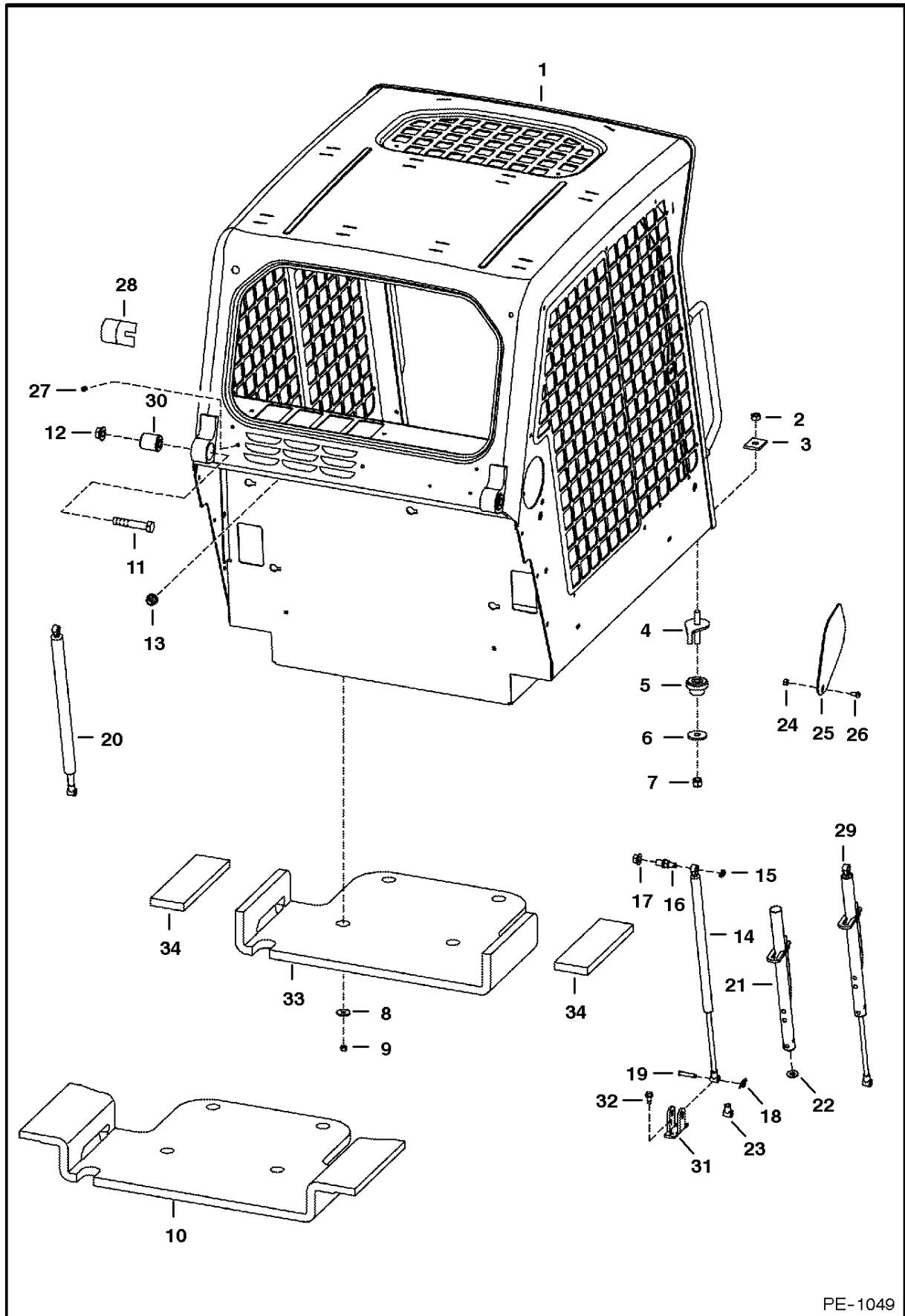


PE-1624

MAIN FRAME

Ref.N°	Part N°	Description	Remarks	Serial N°	Qty.
1	6714590	MAIN FRAME			1
2	6704680	COVER		& Bel	2
3	84G-3712	BOLT			11
4	6708987	BRACKET	hinge - weld on		2
5	6670627	BREATHER	See Page DISC BRAKE(1)		1
6	6700330	COVER			1
7	6712827	CHAINCASE	See Page DRIVE TRAIN(1)		1
8	11F-12	PLUG	chaincase fill		1
9	6702584	BUSHING	weld on		4
10	6702583	BUSHING	weld on		2
11	6577394	BRACKET	hinge - weld on		1
12	6555987	BUSHING	weld on		2
13	31C-824	BOLT			12
14	31C-820	BOLT			28
15	6706042	COVER	See Page DISC BRAKE(1)		1
16	6704695	COVER			2
17	6700182	COVER			1
18	6706485	HOOK	tie down - weld on		2
19	6599645	PLUG	chaincase drain		1
20	6553411	BUSHING			2
21	83D-8	NUT			26
22	6701097	WASHER		& Bel	10
23	6578505	COVER	See Page DISC BRAKE(1)		1
24	84G-3110	BOLT	R.H. side	& Bel	2
24	84G-3112	BOLT	L.H. side	& Bel	2
24	84G-3710	BOLT		& Abv	2
25	17C-620	BOLT	Was 6717378 [A]		2
26	6727837	COVER		& Abv	2
27	6718796	PLUG			1

OPERATOR CAB

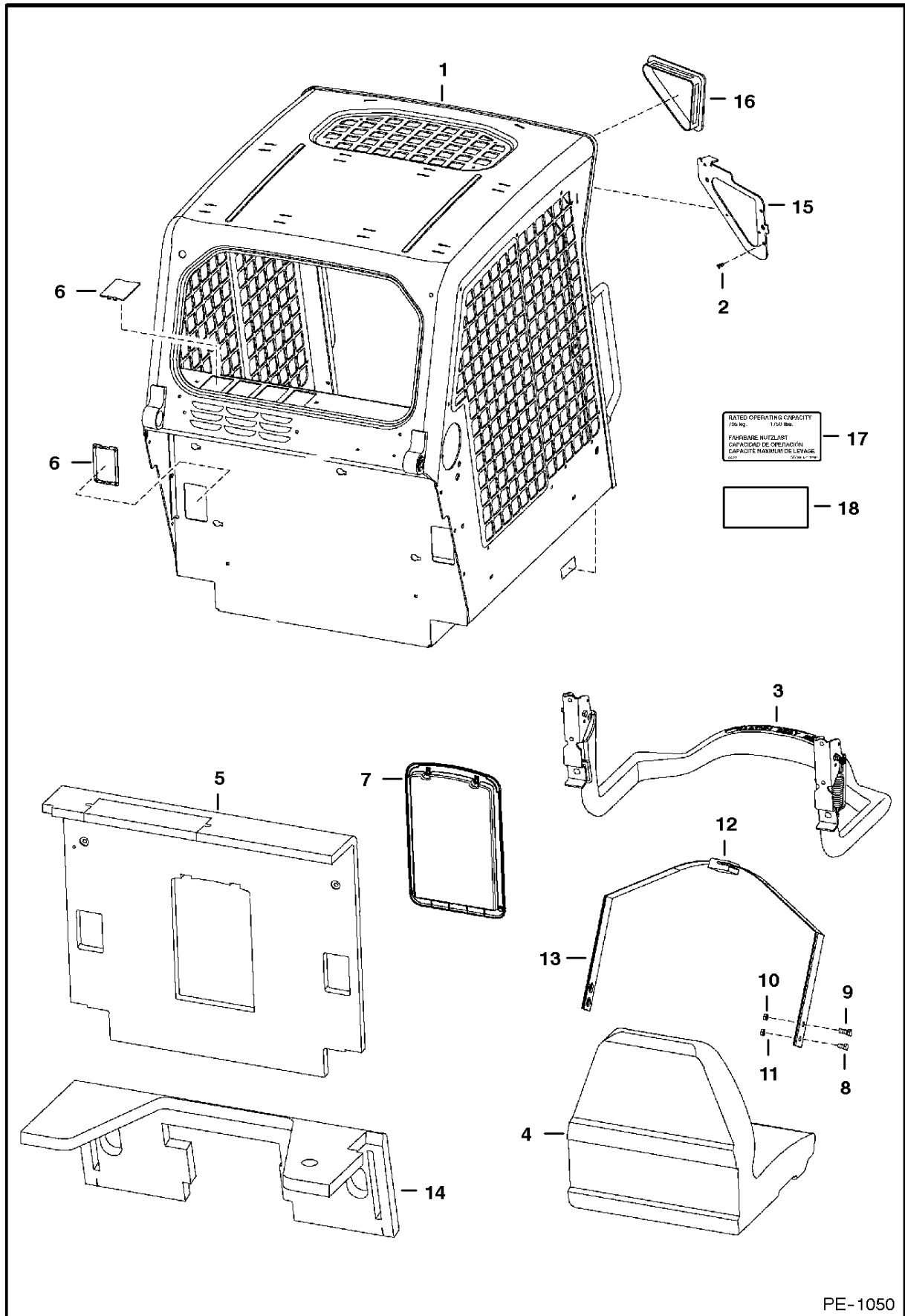


PE-1049

OPERATOR CAB

Ref.N°	Part N°	Description	Remarks	Serial N°	Qty.
1	6719672	OPERATOR CAB	includes cab decals		1
2	59D-8	NUT			2
3	6553709	WASHER	rectangular		2
4	6702971	BOLT			2
5	6560633	MOUNT			2
6	6515817	WASHER			2
7	85D-8	NUT			2
8	619021	WASHER			4
9	59D-5	NUT			4
10	NAP	INSULATION	seat pan - Order Ref. OPERATOR CAB(33) & (2) of Ref. OPERATOR CAB(34) - Was 6719360 [A]		1
11	17C-1056	BOLT			2
12	53D-10	NUT			2
13	53D-6	NUT			4
14	6675135	GAS SPRING	R.H.		1
15	6675140	SNAP RING			2
16	6719064	MOUNT	Was 6719005 [A]		2
17	83D-8	NUT			2
18	6631418	PIN	ring		2
19	6567743	PIN			2
20	6675134	GAS SPRING	L.H.		1
20	6675136	GAS SPRING	L.H. - heavy duty		1
21	6708189	TUBE	stop - R.H.		1
22	6701174	WASHER			1
23	6675257	ROD END			1
24	95D-5	NUT			2
25	6718784	COVER			2
26	25G-512	BOLT	Was 25G-510 [B]		2
27	6675033	INSERT			2
28	6579613	STOP			2
29	NAP	GAS SPRING	R.H. - W/latch - Order Ref. OPERATOR CAB(14) & OPERATOR CAB(21)-OPERATOR CAB(23) - Was 6719072 [A]		1
30	6562602	BUSHING			2
31	6706349	MOUNT	gas spring		2
32	84G-3112	BOLT			4
33	6729013	INSULATION	seat pan		1
34	6729012	INSULATION	seat pan		2

OPERATOR CAB

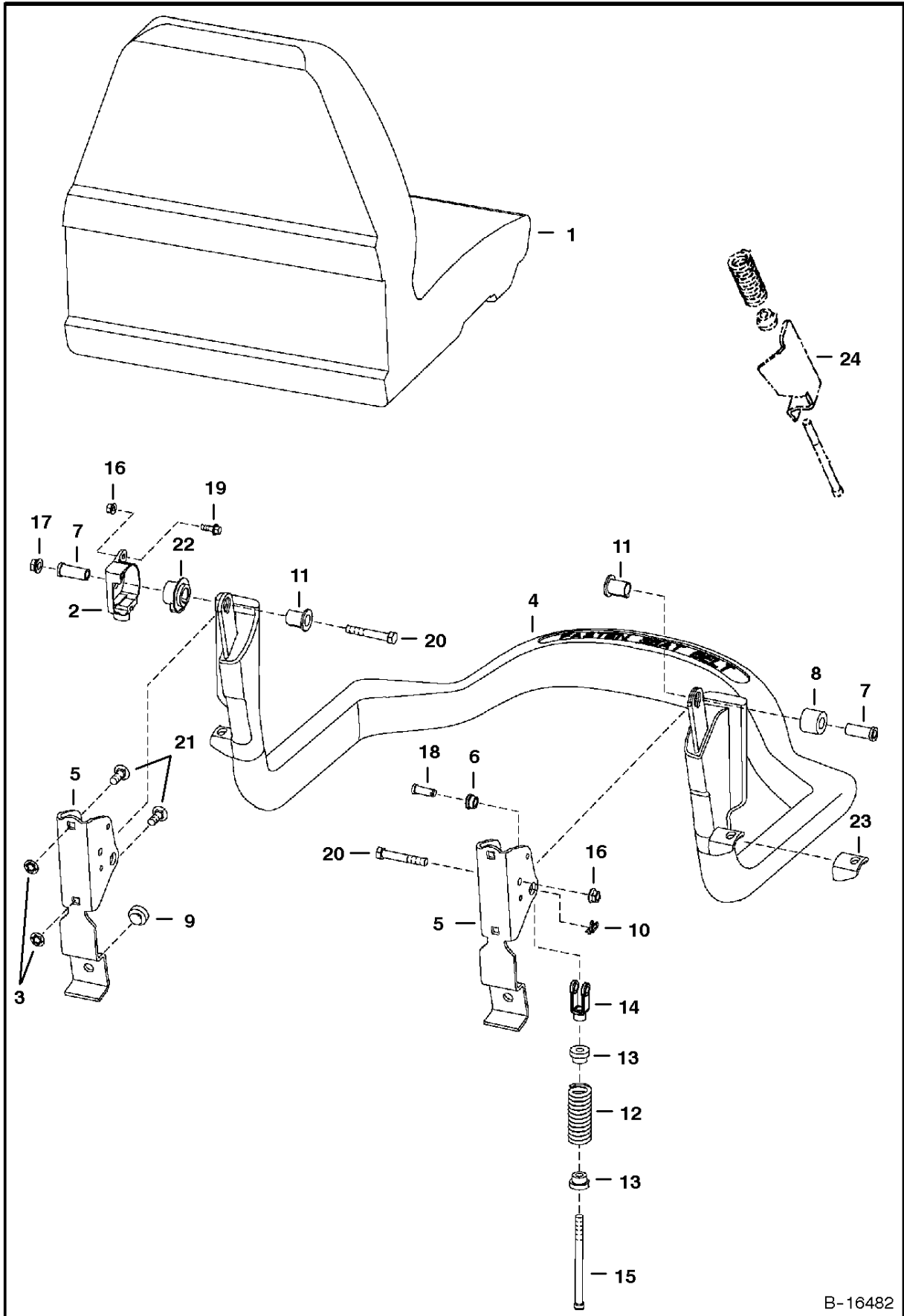


PE-1050

OPERATOR CAB

Ref.N°	Part N°	Description	Remarks	Serial N°	Qty.
1	6719672	OPERATOR CAB	includes cab decals		1
2	6675033	INSERT	See Page CAB ELECTRICAL CIRCUITRY(1)		6
3		SEAT BAR	See Page SEAT & SEAT BAR(1)		1
4	6669135	SEAT	See Page SEAT(1)		1
5	6719504	INSULATION	W/Ref. OPERATOR CAB(7)		1
6	6718101	COVER			6
7	6719503	CONTAINER	manuals		1
7	6675524	CLIP			2
7	6725301	COVER			1
7	6725303	FRAME			1
8	17C-612	BOLT			2
9	17C-716	BOLT			2
10	85D-7	NUT			2
11	85D-6	NUT			2
12	NAP	SEAT BELT	Order 6725403inD1}' Seat Belt - Was 6667875 [A]		1
12	NAP	SEAT BELT	W/spring plates - Order 6675074inD1+ (Seat Belt & (2) of Ref. OPERATOR CAB(13) (6725373inD1) Spring Plate) - Was 6725403 [A]		1
12	6675074	SEAT BELT	W/O spring plates		1
13	NAP	GUIDE	Order 6711908inD1}) Spring Plate, 6565355inD1}+ Guide & (2) of 6630207inD1} Rivet - Was 6711907 [A]		2
13	6711908	SPRING PLATE	Use W/Ref. OPERATOR CAB(12) (NAP/6667875 & NAP/6725403 Seat Belt)		2
13	6565355	GUIDE			1
13	6630207	RIVET			2
13	6725373	SPRING PLATE	(Use W/Ref. OPERATOR CAB(12) (6675074inD1+ Seat Belt)		2
14	6718489	INSULATION	steering panel		1
15	NSS	PLATE	R.H. - weld on		1
15	NSS	PLATE	L.H. - weld on		1
16	6674403	COVER	no lights		2
17	6725374	DECAL	load - Was 6718200 [B,D]		1
18	6804790	DECAL	capacity		1

SEAT & SEAT BAR

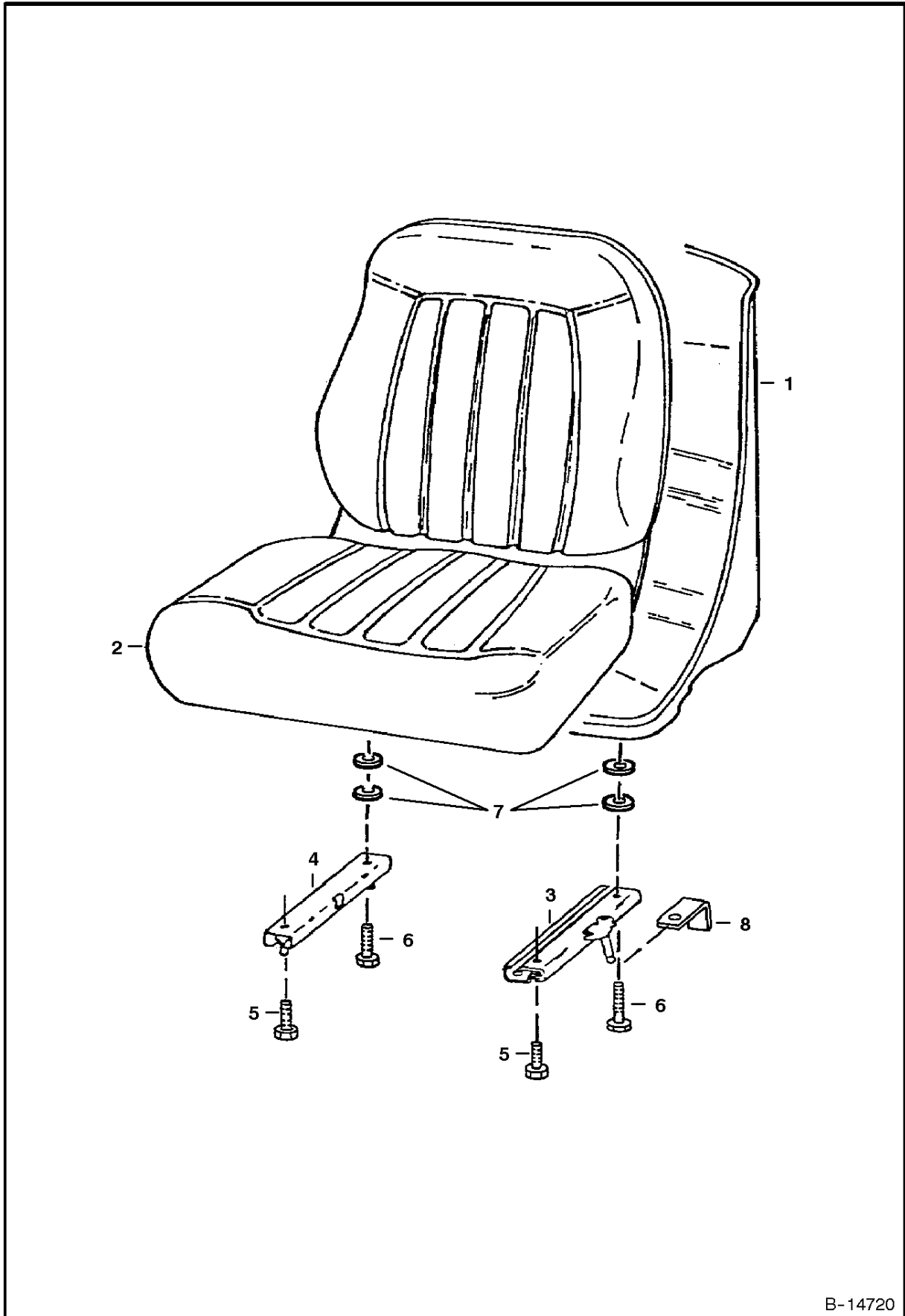


B-16482

SEAT & SEAT BAR

Ref.N°	Part N°	Description	Remarks	Serial N°	Qty.
1	6669135	SEAT	See Page SEAT(1)		1
2	6674406	SENSOR			1
3	6674894	NUT			4
4	6715860	SEAT BAR			1
5	6715863	BRACKET			1
6	6715864	BUSHING			2
7	6715865	BUSHING			2
8	6715866	BUSHING			1
9	6519178	BUMPER			2
10	6631418	PIN	ring		2
11	6664882	BUSHING	keyed		2
12	6701535	SPRING			2
13	6710659	BUSHING			2
14	6713589	CLEVIS			2
15	6713887	BOLT			2
16	83D-4	NUT			1
17	53D-6	NUT			2
18	4F-6106	PIN			2
19	35C-412	BOLT			1
20	17C-640	BOLT			2
21	10C-616	BOLT			4
22	6674405	BUSHING			1
23	NAP	MOUNT	Order Ref. SEAT & SEAT BAR(4)	& Abv	1
24	NAP	MOUNT	Order Ref. SEAT & SEAT BAR(4)	& Bel	1

**SEAT
(Michigan)**

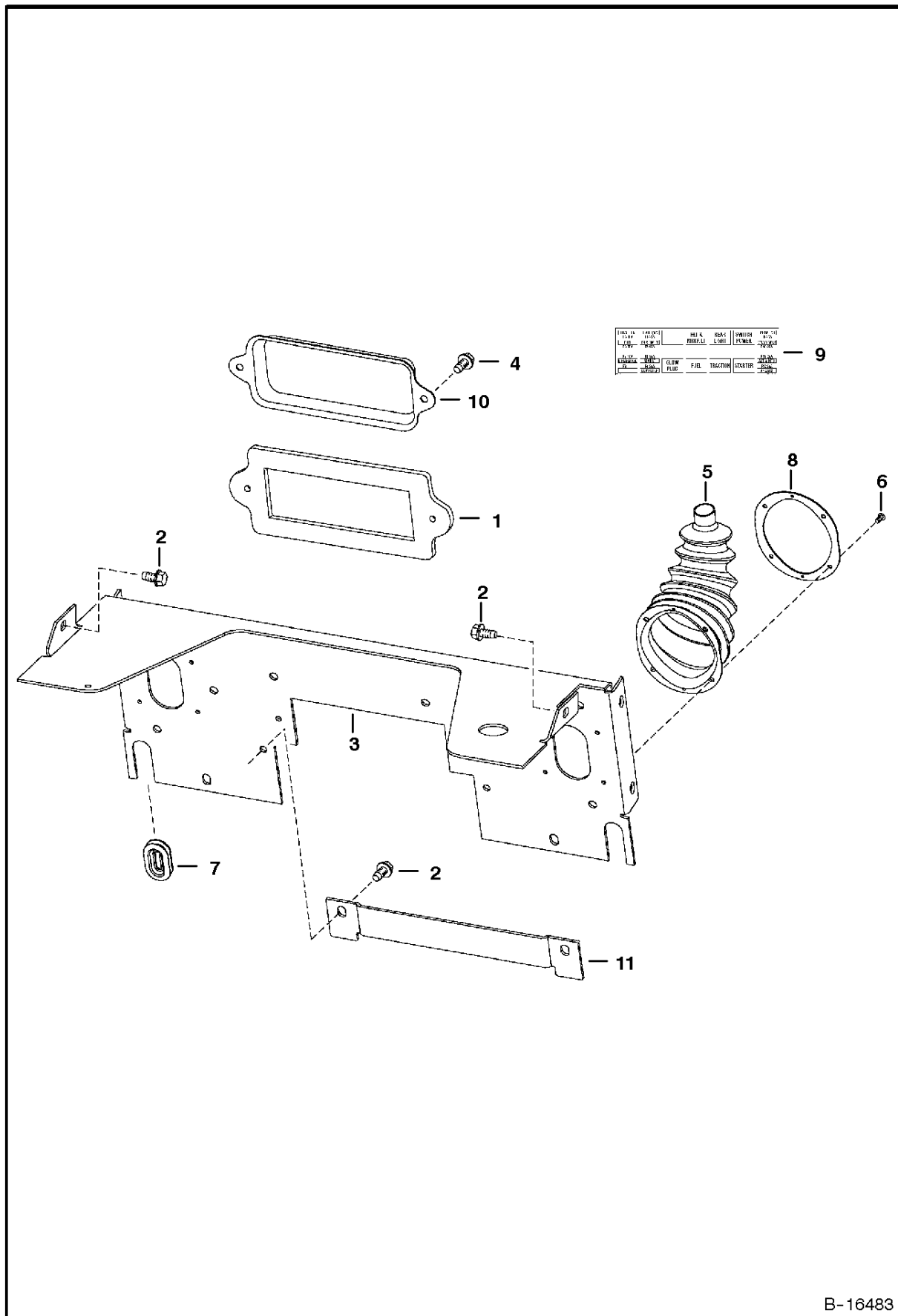


B-14720

SEAT

Ref.N°	Part N°	Description	Remarks	Serial N°	Qty.
1	6669135	SEAT	W/Ref. SEAT(2)-SEAT(7)		1
2	6670160	CUSHION	W/edging, clip & (2) grommets		1
2	NSS	EDGING			1
2	NSS	CLIP			1
3	6674013	TRACK	L.H. - W/8' (203,2 mm) Latch		1
4	6669089	TRACK	R.H. - W/O Latch		1
5	25G-512	BOLT			2
6	25G-520	BOLT			2
7	6672715	SPACER	Was 7000010 [A]		4
8	6668953	BRACKET			2

PANELS

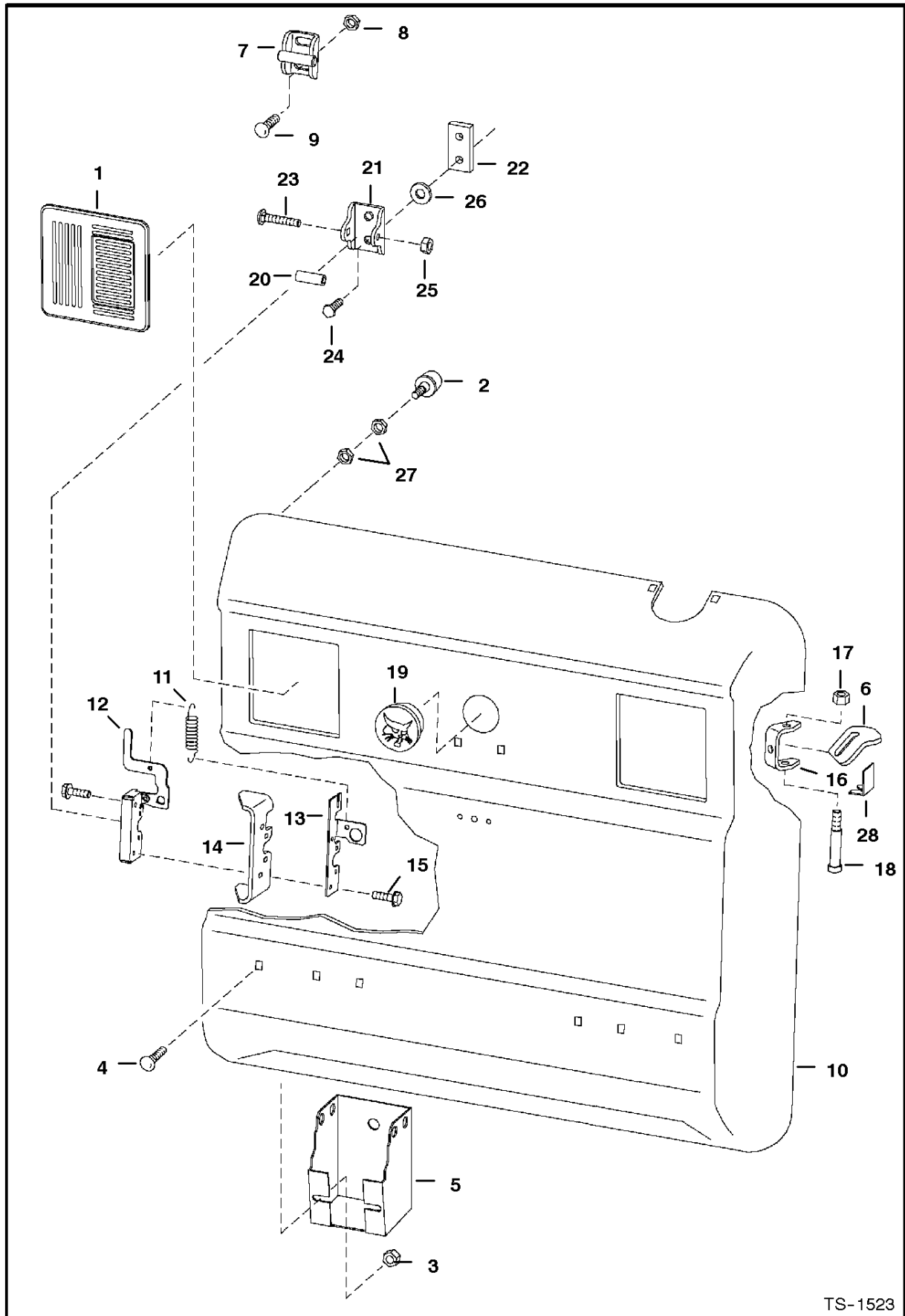


B-16483

PANELS

Ref.N°	Part N°	Description	Remarks	Serial N°	Qty.
1	6725302	GASKET			1
2	84G-3712	BOLT			16
3	6717208	SHIELD			1
4	84G-3112	BOLT			2
5	6532127	BOOT	W/Ref. PANELS(8)		2
6	6630207	RIVET			12
7	6577961	GROMMET			2
8	NAP	PLATE	Order Ref. PANELS(5)		2
9	NAP	DECAL	fuse/relay - 2.10' x 9.40' (53,3 mm x 238,8 mm) - Order 6718774inD17 Decal		1
9	6718774	DECAL	fuse/relay - 2' x 7' (50,8 mm x 177,8 mm)		1
10	6716621	COVER	fuse/relay		1
11	6718760	COVER			1

REAR DOOR

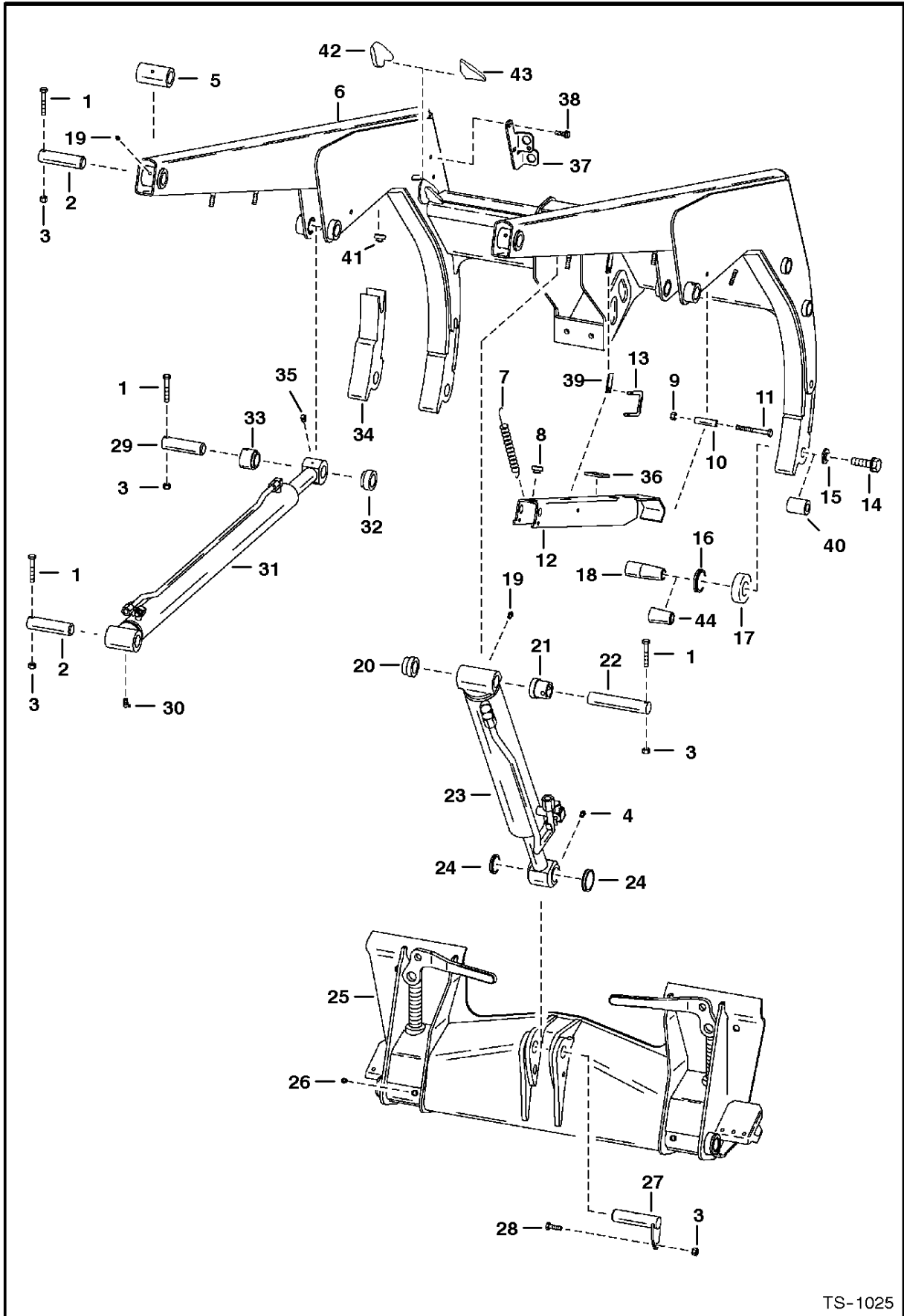


TS-1523

REAR DOOR

Ref.N°	Part N°	Description	Remarks	Serial N°	Qty.
1	6670287	COVER	For Light Mount See Page LIGHT KIT(1)		2
2	6655399	BUMPER	Was 6714454 [B,D]		2
3	55D-6	NUT			2
4	37C-612	BOLT			2
5	6715318	TOOL HOLDER			1
6	6714126	DOOR STOP			1
7	NAP	STRIKER ASSY.	Order Ref. REAR DOOR(20) - REAR DOOR(26) - Was 6715157 [A]		1
8	57D-8	NUT			2
9	37C-820	BOLT	carriage		2
9	25G-820	BOLT	hex socket		2
10	6711524	REAR DOOR			1
11	6714210	SPRING			1
12	6670867	LATCH			1
13	6711664	GUIDE	latch		1
14	6711527	LATCH PLATE	weld-on		1
15	31C-420	BOLT			4
16	6711526	HINGE	weld on		2
17	59D-6	NUT			2
18	38C-856	BOLT			2
19	6718796	PLUG			1
20	6719550	TUBE	striker		1
21	6719524	STRIKER			1
22	6719525	BAR	threaded striker		1
23	37C-644	BOLT	carriage		1
24	17C-820	BOLT			2
25	61D-6	NUT			2
26	6675273	WASHER	lock		2
27	61D-5	NUT			2
28	6719766	STOP			1

LIFT ARM & BOB-TACH

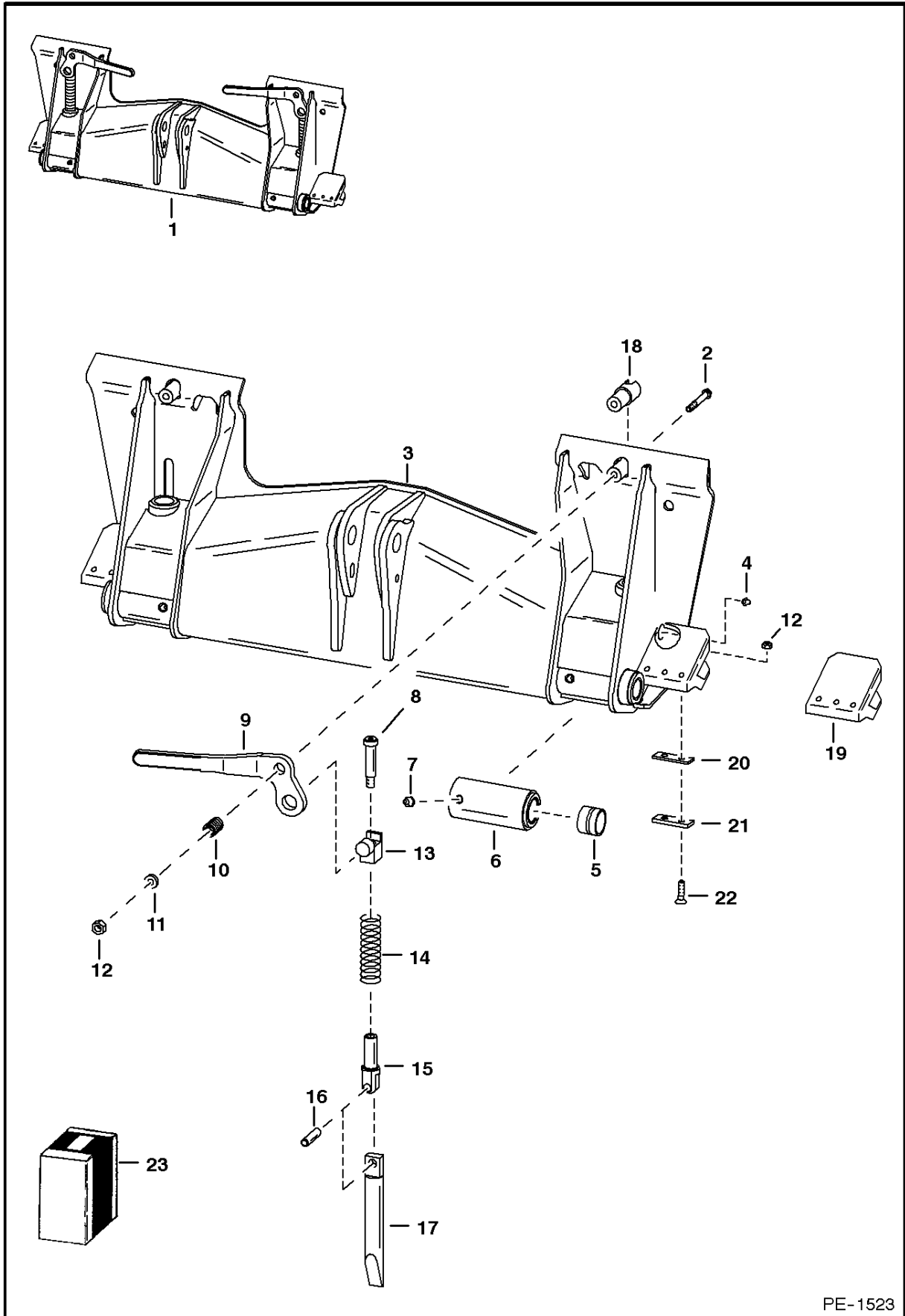


TS-1025

LIFT ARM & BOB-TACH

Ref.N°	Part N°	Description	Remarks	Serial N°	Qty.
1	17C-640	BOLT			8
2	6577954	PIN			4
3	85D-6	NUT			9
4	10H-35	GREASE ZERK			1
5	6578356	BUSHING	Weld On		2
6	NAP	LIFT ARM	1.25' (31,8 mm) dia. Bob-Tach pins - Order 6730797inD 1 Lift Arm & (2) of Ref. LIFT ARM & BOB-TACH(44) - Was 6703136 [A]	& Bel	1
6	6730797	LIFT ARM	1.50' (38,1 mm) dia. Bob-Tach pins	& Abv	1
7	6700743	SPRING			1
8	6519178	BUMPER	rubber		1
9	61D-6	NUT			1
10	6700469	SPACER			1
11	17C-648	BOLT			1
12	6705089	LIFT ARM STOP			1
13	6714810	PIN	retainer		1
14	17C-1064	BOLT		& Bel	2
14	31C-1264	BOLT		& Abv	2
15	6555455	WASHER		& Bel	2
15	6718723	WASHER		& Abv	2
16	6651709	SEAL			2
17	6700039	CUP	seal	& Bel	2
17	6700463	CUP	seal	& Abv	2
18	6707042	PIN		& Bel	2
18	6730263	PIN	1.50' (38,1 mm) dia.	& Abv	2
19	10H-25	GREASE ZERK			3
20	6703363	BUSHING	Weld On - Also Order Ref. LIFT ARM & BOB-TACH(22)		1
21	6704287	BUSHING	Weld On - Also Order Ref. LIFT ARM & BOB-TACH(22)		1
22	6704288	PIN	1.25'(31,8 mm) dia. - 7'(177,8 mm) long		1
23		CYLINDER	tilt - See Page TILT CYLINDER(1)		1
24	225855	SEAL			2
25		BOB-TACH	See Page BOB-TACH(1)		1
26	743332	GREASE ZERK			2
27	6716601	PIN			1
28	17C-620	BOLT			1
29	6547593	PIN			2
30	11H-15	GREASE ZERK			2
31		CYLINDER	lift - See Page LIFT CYLINDER(1)		2
32	6555989	BUSHING	Weld On		2
33	6555987	BUSHING	Weld On		2
34	NAP	ARM	R.H. - Weld On		1
34	NAP	ARM	L.H. - Weld On		1
35	12H-15	GREASE ZERK			2
36	6704436	PAD	foam - self adhesive		1
37	6713850	MOUNT	See Page AUXILIARY HYDRAULICS(1)		1
38	84G-3112	BOLT	See Page AUXILIARY HYDRAULICS(1)		2
39	6705091	TAB	weld on		1
40	6714874	BUSHING	weld on - W/tapered hole - for 1.25'(31,8 mm) dia. pin		2
41	6704403	STOP	weld on		2
42	6727544	PLATE	weld on		2
43	6727545	PLATE	weld on		2
44	6731254	BUSHING	tapered - allows 1.25' (31,8 mm) dia. Bob-Tach pins to be used in 1.50' (38,1 mm) dia. Lift Arm holes		2

BOB-TACH

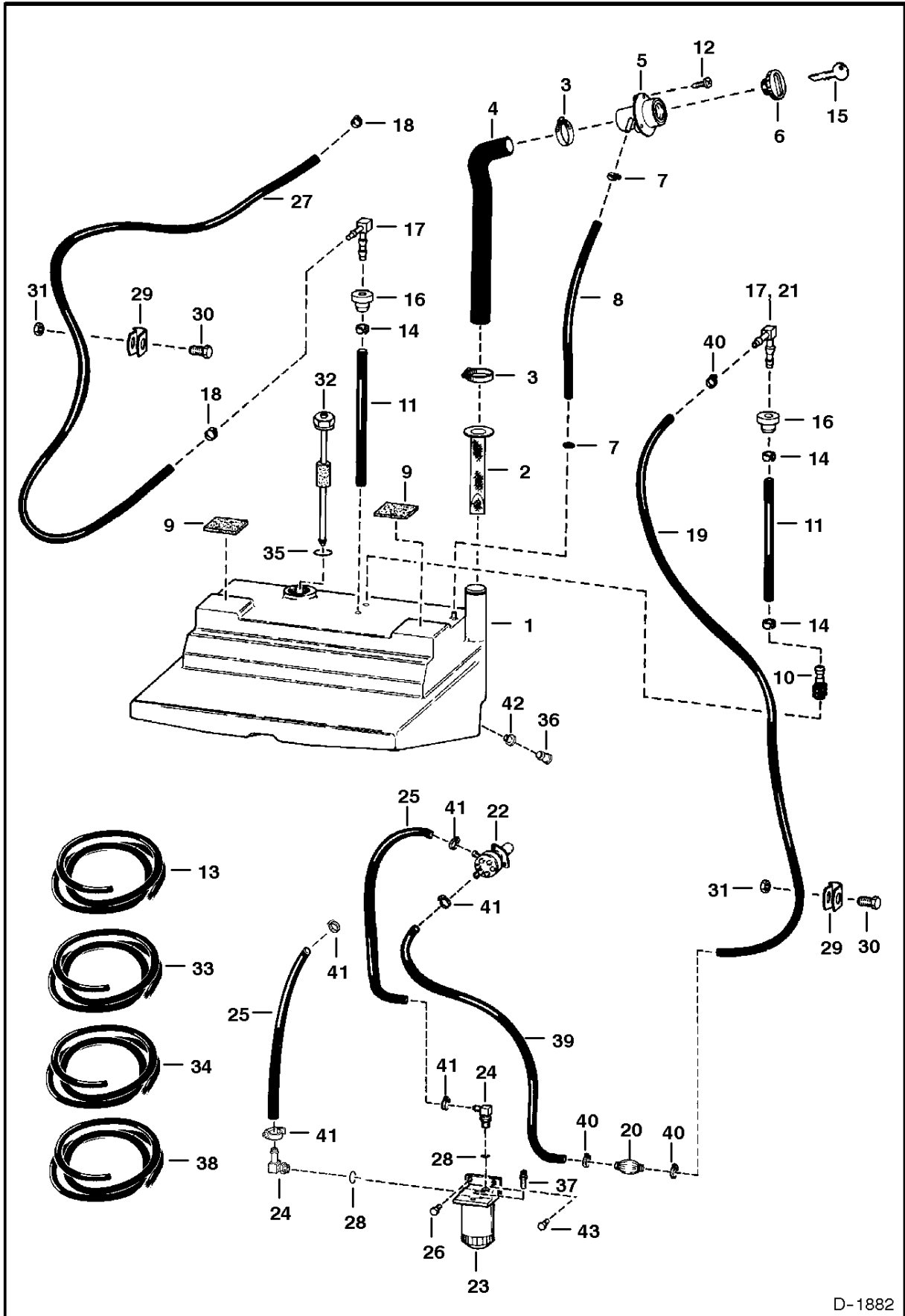


PE-1523

BOB-TACH

Ref.N°	Part N°	Description	Remarks	Serial N°	Qty.
1	6571744	BOB-TACH	Ref. BOB-TACH(2)-BOB-TACH(22) (- W/1.25' (31,8 mm) dia. Lift Arm holes - Was SALES [D]	& Bel	1
1	6709215	BOB-TACH	Ref. BOB-TACH(2)-BOB-TACH(22) - W/1.50' (38,1 mm) dia. Lift Arm holes	& Abv	1
2	17C-660	BOLT			2
3	NAP	FRAME			1
4	10H-35	GREASE ZERK			2
5	6589665	BUSHING	Press Fit		2
6	6731243	BUSHING	Weld-on -W/Ref. BOB-TACH(5) - Was 6577445 [A]		2
7	743332	GREASE ZERK			2
8	38C-1036	BOLT	shoulder		2
9	6702904	LEVER	R.H.		1
9	6702903	LEVER	L.H.		1
10	6713040	SPRING			2
11	619021	WASHER			2
12	85D-6	NUT			6
13	6704240	PIVOT ASSY			2
14	6562018	SPRING			2
15	6704248	PIVOT	wedge		2
16	14J-5032	PIN			2
17	6704242	WEDGE ASSY.			2
18	6702958	BUSHING	weld on		2
19	6704600	STOP	R.H. - Weld on - Shown		1
19	6704601	STOP	L.H. - Weld on - Not shown		1
20	6707514	SHIM	.060		x
20	6579106	SHIM	.125		2
21	6579104	SHIM	.250		2
22	9G-620	BOLT			4
23	6724775	LEVER KIT	R.H. - Bob-Tach - Ref. BOB-TACH(2) & BOB-TACH(8) - BOB-TACH(17)		1
23	6724776	LEVER KIT	L.H. - Bob-Tach - Ref. BOB-TACH(2) & BOB-TACH(8) - BOB-TACH(17)		1

FUEL SYSTEM

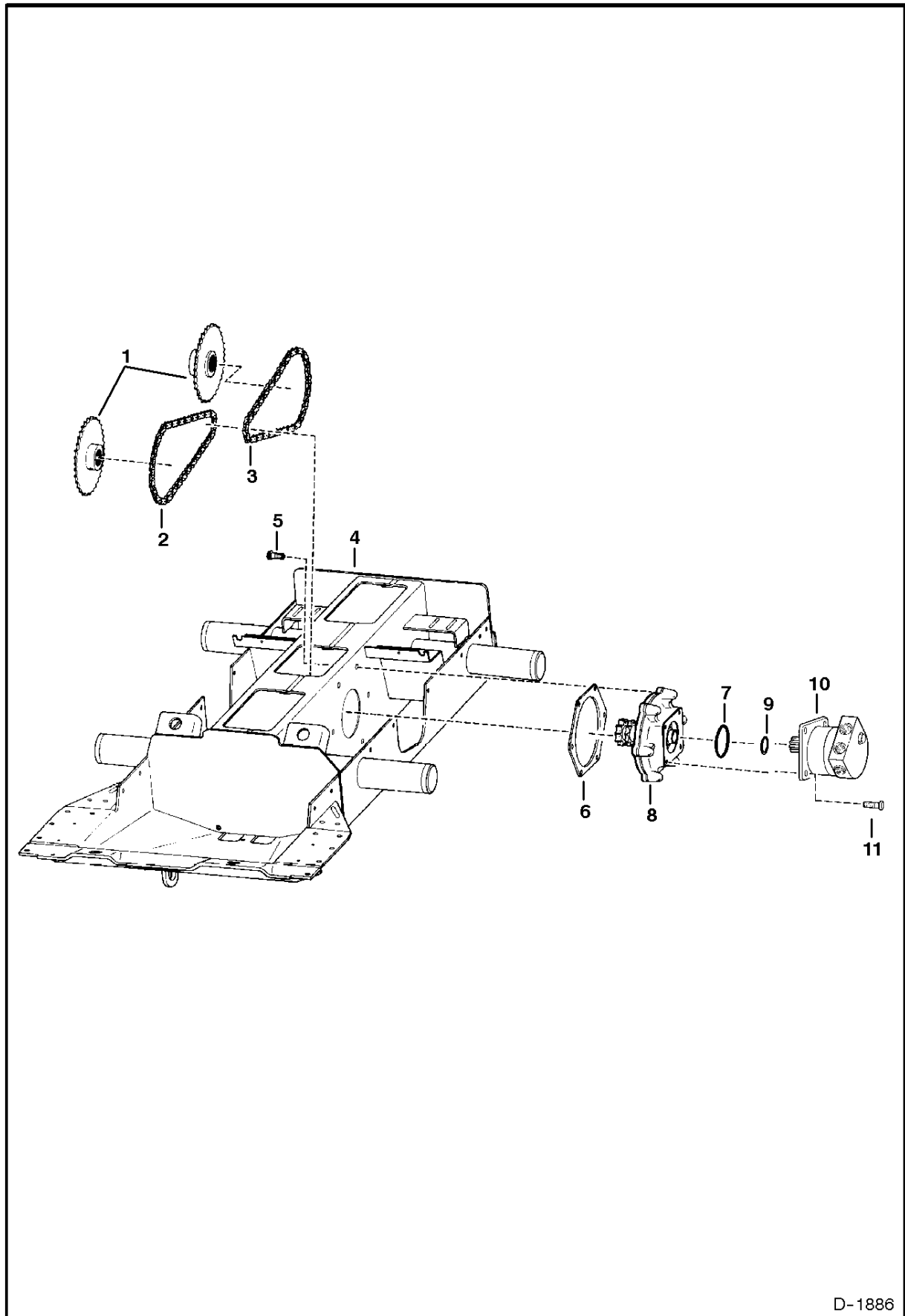


D-1882

FUEL SYSTEM

Ref.N°	Part N°	Description	Remarks	Serial N°	Qty.
1	6717572	TANK			1
2	6569219	SCREEN			1
3	42H-32	CLAMP			2
4	6710653	HOSE			1
5	6701449	FILLER TUBE			1
6	6661114	CAP	green		1
6	NAP	CAP	locking -W/Ref. FUEL SYSTEM(15) Code GC020		1
6	6661696	FUEL CAP	locking - W/Ref. FUEL SYSTEM(15) Code PK510		1
7	42H-10	CLAMP			2
8	NAP	HOSE	21.5" (546,1 mm) long - Order Ref. FUEL SYSTEM(13)		1
9	6578278	PAD	self adhesive one side		2
10	6650239	SCREEN			1
11	NAP	HOSE	8.5'-9.5'(215,9 mm - 241,3 mm) long - Order 6729853in D1 Hose - Was 6576386 [B]	& Bel	2
11	6729853	HOSE	9.75'(247,7 mm) long	& Abv	2
12	6706517	SCREW			3
13	6578172	HOSE	bulk - Sold Per Foot		x
14	6661213	CLAMP			3
15	6654374	KEY	Code GC020		1
15	6587458	KEY SET	Code PK510		1
16	6553411	BUSHING	.5' I.D.		3
17	6598908	ELBOW			1
18	42HS-4	CLAMP	Was 6515575 [B]		2
19	NAP	HOSE	35" (889,0 mm) long - Order Ref. FUEL SYSTEM(33)		1
20	6657734	PUMP	hand primer		1
21	6661382	ELBOW			1
22	6655216	FUEL PUMP	See Page INJECTION PUMP(1) - Was 6674170 [D]		1
23	6667353	FILTER ASSY			1
23	6667352	FILTER			1
23	72F-1	DRAIN COCK			1
24	6715183	ELBOW	W/Ref. FUEL SYSTEM(28)		2
25	NAP	HOSE	13"(330,2 mm)long-Order Ref. FUEL SYSTEM(34) - connects to Ref. INJECTION PUMP(12) on Page INJECTION PUMP(1)		2
26	17C-512	BOLT			2
27	NAP	HOSE	(53"(1346,2 mm)long-Order Ref. FUEL SYSTEM(38)		1
28	99K-5	O-RING			x
29	30H-36	CLAMP			2
30	17C-612	BOLT			2
31	61D-6	NUT			1
32	6674209	SENSOR	fuel - W/Ref. FUEL SYSTEM(35) - See Page ENGINE ELECTRICAL CIRCUITRY(1)		1
33	6577821	HOSE	bulk - Sold Per Foot		x
34	6577822	HOSE	bulk - Sold Per Foot		x
35	6717579	GASKET			1
36	6599645	PLUG	fuel drain - .5' O.D.		1
36	6717401	PLUG	fuel drain - .75' O.D.		1
37	6658180	PLUG	breather		1
38	6578169	HOSE	bulk - Sold Per Foot		x
39	NAP	HOSE	18" (457,2 mm) - Order Ref. FUEL SYSTEM(33)		1
40	5HM-13	CLAMP	constant tension		3
41	5HM-14	CLAMP	constant tension		5
42	6717402	BUSHING	.75' I.D.		1
43	84G-3116	BOLT		& Abv	1

DRIVE TRAIN

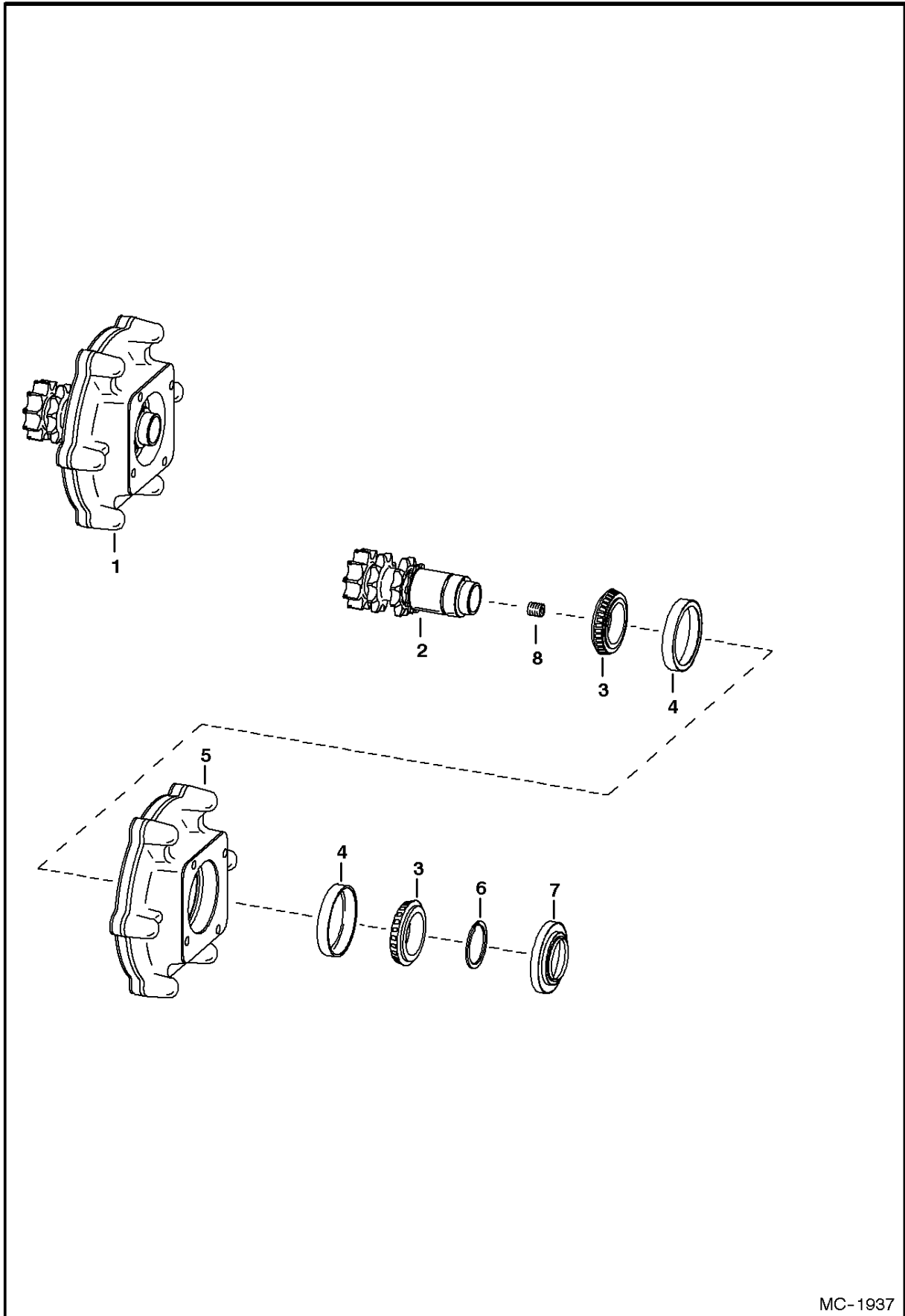


D-1886

DRIVE TRAIN

Ref.N°	Part N°	Description	Remarks	Serial N°	Qty.
1	6577204	SPROCKET			4
2	6579126	CHAIN	58 pitches - hour glass shape		2
2	6731219	CHAIN	58 pitch - oval shape link		2
3	6579127	CHAIN	62 pitches - hour glass shape		2
3	6731218	CHAIN	62 pitch - oval shape link		2
3	6510171	LINK	conn. - hour glass shape		x
3	6675332	LINK	conn. - oval shape		x
4	6712827	CHAINCASE			1
5	35C-1032	BOLT			12
6	6704878	GASKET	install W/rib toward chaincase		2
7	25K-30508	O-RING			2
8	6705287	MOUNT ASSY.	drive motor - See Page MOTOR CARRIER(1)		2
9	25K-30202	O-RING	Supplied W/Motor		2
10		MOTOR	See Page HYDROSTATIC MOTOR(1) - W/Ref. DRIVE TRAIN(9)		2
11	93G-824	BOLT	Was 73G-824 [B]		8

**MOTOR CARRIER
(Drive Motor Mount Assy.)**



MC-1937

**Thank you very much
for your reading.**

**Please click here and go
back to our website.**

**Then, you can download
the complete manual
instantly.**

No waiting.

Have questions.

Please write to me.

**All the problems will be answered
within 12 hours.**

aservicemanuapdf@yahoo.com