

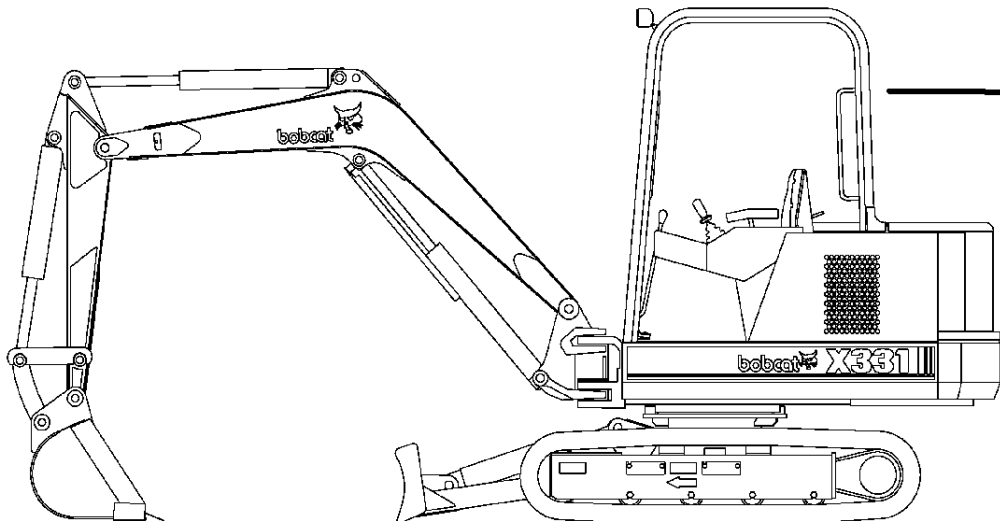
**331**



**Bobcat®**

# Parts Manual

**S/N 511920001 & Above**



## 331 ALPHABETICAL INDEX

|                             |                              |
|-----------------------------|------------------------------|
| ACCUMULATOR. ....           | 94, 96, 102, 106, 126        |
| AIR CLEANER. ....           | 237                          |
| ALTERNATOR. ....            | 190, 192, 198                |
| ANTI-FREEZE. ....           | 322                          |
| ARM. ....                   | 76                           |
| ARM REST. ....              | 82                           |
| ARM, WIPER. ....            | 28                           |
| AUGER. ....                 | 240, 254                     |
| BEARING, CAMSHAFT. ....     | 218                          |
| BEARING, CRANKSHAFT. ....   | 216                          |
| BEARING, ROD. ....          | 216                          |
| BEARING, SWING. ....        | 56                           |
| BELL HOUSING. ....          | 203                          |
| BELLY PAN KIT. ....         | 264                          |
| BLOCK, ENGINE. ....         | 214                          |
| BRACKET, SWING. ....        | 74                           |
| BREAKER MOUNTING KIT. ....  | 265, 270                     |
| BREAKER. ....               | 294, 304                     |
| BUCKET. ....                | 272, 273                     |
| BUCKET LINK. ....           | 76                           |
| CAB. ....                   | 20, 24                       |
| CAB DOOR. ....              | 40                           |
| CAB HARNESS. ....           | 28                           |
| CABLE, BLADE. ....          | 88                           |
| CANOPY. ....                | 18                           |
| CORE, HEATER. ....          | 44, 46                       |
| COUPLER, AUXILIARY. ....    | 120                          |
| COVER, FRONT ENG.. ....     | 212                          |
| CRANKCASE. ....             | 214                          |
| CRANKSHAFT. ....            | 216                          |
| CYLINDER, ARM. ....         | 120, 166                     |
| CYLINDER, BLADE. ....       | 80, 110, 170                 |
| CYLINDER, BOOM SWING. ...   | 110, 182, 184                |
| CYLINDER, BOOM. ....        | 120, 174, 176                |
| CYLINDER, BUCKET. ....      | 120, 180                     |
| CYLINDER, GAS SPRING. ....  | 14, 28                       |
| DECALS. ....                | 283, 285, , 287, 288         |
| DIPSTICK, ENGINE. ....      | 210                          |
| DOME LIGHT. ....            | 24                           |
| DOOR, CAB. ....             | 40                           |
| DRIVE MOTOR. ....           | 112, 116, 134                |
| ENGINE. ....                | 202                          |
| EXHAUST PURIFIER. ....      | 202                          |
| FAN, ENGINE. ....           | 204                          |
| FILTER, AIR CLEANER. ....   | 237                          |
| FILTER, ENG. OIL. ....      | 212                          |
| FLOORMAT. ....              | 20, 82                       |
| FLYWHEEL. ....              | 203                          |
| FRONT IDLER. ....           | 56                           |
| FRONT WINDOW. ....          | 28                           |
| FUEL CAMSHAFT. ....         | 219                          |
| FUEL FILTER. ....           | 228                          |
| FUEL PUMP. ....             | 228                          |
| FUEL TANK. ....             | 16, 228                      |
| FUSE HOLDER. ....           | 24                           |
| GASKET KIT, ENG. ....       | 234, 236                     |
| GUARD, FAN. ....            | 198                          |
| HEAD, CYLINDER. ....        | 209                          |
| HEATER. ....                | 20, 44, 46                   |
| HEATER HOSE. ....           | 20                           |
| HOSE, INTAKE. ....          | 237                          |
| HOUSING, THERMOSTAT. ....   | 225                          |
| HYD/HYDRO FLUID. ....       | 322                          |
| HYDRAULIC TANK. ....        | 228                          |
| IDLER, FRONT. ....          | 56                           |
| INJECTION PUMP. ....        | 226, 229                     |
| JOYSTICK. ....              | 94, 96, 98, 100, 128, 130    |
| KIT, BELLY PAN. ....        | 264                          |
| KIT, BREAKER MOUNTING. .... | 265, 270                     |
| KIT, DECAL. ....            | 288                          |
| KIT, RUBBER TRACK. ....     | 58                           |
| KIT, STEEL TRACK. ....      | 59                           |
| KIT, TANK HEATER. ....      | 318, 319                     |
| KIT, WORK LIGHT. ....       | 320                          |
| LEVER, BLADE. ....          | 88                           |
| LEVER, ENG. STOP. ....      | 223                          |
| LEVER, GOVERNOR. ....       | 220                          |
| LEVER, SPEED. ....          | 221                          |
| LEVER, TRAVEL. ....         | 92                           |
| LIGHT. ....                 | 26                           |
| LUBRICANT. ....             | 322                          |
| MANIFOLD, DRAIN. ....       | 106, 108                     |
| MANIFOLD, INT & EXH. ....   | 224                          |
| MANIFOLD, SUPPLY. ....      | 102                          |
| MOTOR, HEATER. ....         | 44, 46                       |
| OIL. ....                   | 322                          |
| OIL COOLER. ....            | 106                          |
| OIL PAN. ....               | 210                          |
| OIL PUMP, ENG. ....         | 214                          |
| PAINT. ....                 | 322                          |
| PISTON, ENGINE. ....        | 216                          |
| PUMP. ....                  | 102, 148                     |
| PUMP, WATER. ....           | 222                          |
| ROLLER. ....                | 67, 69                       |
| ROLLER, TRACK. ....         | 56                           |
| RUBBER TRACK KIT. ....      | 58                           |
| SEAT BELT. ....             | 82                           |
| SEAT, OPERATOR. ....        | 48                           |
| SHUTTLE VALVE. ....         | 112, 116                     |
| STARTER. ....               | 194, 196, 203                |
| STEEL TRACK KIT. ....       | 59                           |
| SWING BEARING. ....         | 56                           |
| SWING MOTOR. ....           | 108, 144                     |
| SWING TRANSMISSION. ....    | 142                          |
| SWITCH, HEATER. ....        | 44, 46                       |
| SWITCH, WIPER/WASHER. ....  | 24                           |
| SWIVEL JOINT. ....          | 106, 108, 110, 112, 122, 124 |
| TANK HEATER. ....           | 318, 319                     |
| TRACK ROLLER. ....          | 56, 67, 69                   |
| TRACK SPROCKET. ....        | 56                           |
| TRANSMISSION, SWING. ....   | 142                          |
| TRAVEL MOTOR. ....          | 112, 116, 134                |
| TWO SPEED VALVE. ....       | 132                          |
| VALVE COVER. ....           | 206                          |
| VALVE SECTION. ....         | 150, 162                     |
| VALVE, 3 SPOOL. ....        | 158                          |
| VALVE, 6 SPOOL. ....        | 149                          |
| VALVE, BUILD-UP. ....       | 163                          |
| VALVE, CONTROL. ...         | 94, 96, 98, 100, 110         |
| VALVE, INT & EXH. ....      | 208                          |
| VALVE, LOCKOUT. ....        | 94, 96, 139                  |
| VALVE, SELECTOR. ....       | 106, 118, 131                |
| VALVE, SHUTTLE. ....        | 112, 116                     |
| VALVE, TWO SPEED. ....      | 132                          |
| WATER PUMP. ....            | 222                          |
| WINDOW WASHER. ....         | 20                           |
| WINDOW, FRONT. ....         | 28                           |
| WINDOW, R.H.. ....          | 36                           |
| WIPER BLADE. ....           | 28                           |
| WIPER MOTOR. ....           | 28                           |
| WIPER/WASHER SWITCH. ....   | 24                           |
| WORK LIGHT KIT. ....        | 320                          |

## 331 CONTENTS

|  |               |
|--|---------------|
| <b>MAIN FRAME</b> .....  | <b>13-56</b>  |
| UPPERSTRUCTURE, COUNTERWEIGHTS & SIDE COVERS .....                               | 13-14         |
| ENGINE COVERS & INSULATION .....   | 15-16         |
| SIDE COVERS & TANKS .....  | 17-18         |
| CANOPY AND MOUNTING .....  | 19-20         |
| CAB MOUNTING .....   | 21-24         |
| OPERATOR CAB .....   | 25-38         |
| WINDOW ASSY .....  | 39-40         |
| OPERATOR CAB (DOOR) .....  | 41-42         |
| *OPERATOR CAB (DOOR) .....   | 43-44         |
| HEATER .....   | 45-48         |
| SEAT .....   | 49-56         |
| <b>UNDERCARRIAGE</b> .....   | <b>57-86</b>  |
| UNDERCARRIAGE .....  | 57-58         |
| TRACK DERAILING KIT .....  | 59-60         |
| RUBBER TRACK KIT .....   | 61-62         |
| STEEL TRACK KIT .....  | 63-64         |
| RECOIL SPRING .....  | 65-68         |
| FRONT IDLER (FOR ALL STEEL TRACKS & FOR RUBBER TRACKS ON EUROPEAN MODELS) .....  | 69-70         |
| *FRONT IDLER (FOR ALL STEEL TRACKS & FOR RUBBER TRACKS ON EUROPEAN MODELS) ..... | 71-72         |
| FRONT IDLER (FOR ALL RUBBER TRACKS - EXCEPT ON EUROPEAN MODELS) .....            | 73-74         |
| *FRONT IDLER (FOR ALL RUBBER TRACKS - EXCEPT ON EUROPEAN MODELS) .....           | 75-76         |
| TRACK ROLLER (FOR ALL STEEL TRACKS & FOR RUBBER TRACKS ON EUROPEAN MODELS) ..... | 77-78         |
| TRACK ROLLER (FOR ALL RUBBER TRACKS - EXCEPT FOR EUROPEAN MODELS) .....          | 79-80         |
| *TRACK ROLLER .....  | 81-82         |
| TRACK ROLLER .....   | 83-84         |
| TRACKS .....   | 85-86         |
| <b>WORK EQUIPMENT</b> .....  | <b>87-94</b>  |
| SWING BRACKET .....  | 87-88         |
| ARM & BUCKET LINK .....  | 89-90         |
| BOOM .....   | 91-92         |
| BLADE .....  | 93-94         |
| <b>CONTROLS</b> .....  | <b>95-214</b> |
| CONTROL CONSOLE, FLOORBOARDS AND SEAT .....                                      | 95-98         |
| L.H. CONTROL CONSOLE .....   | 99-100        |
| BLADE, BOOMSWING, AUXILIARY & THROTTLE CONTROLS .....                            | 101-104       |
| TRAVEL CONTROLS .....  | 105-106       |
| L.H. JOYSTICK CONTROLS .....   | 107-110       |
| R.H. JOYSTICK CONTROLS .....   | 111-114       |
| HYDRAULIC CIRCUITRY .....  | 115-134       |
| SWIVEL JOINT .....   | 135-138       |
| ACCUMULATOR VALVE .....  | 139-140       |
| R.H. JOYSTICK CONTROLS .....   | 141-142       |
| L.H. JOYSTICK CONTROLS .....   | 143-144       |
| SELECTOR VALVE .....   | 145-146       |
| 2 SPEED VALVE .....  | 147-148       |
| TRAVEL MOTOR .....   | 149-154       |
| CHECK VALVE .....  | 155-156       |
| SWING TRANSMISSION .....   | 157-158       |
| SWING MOTOR .....  | 159-160       |
| CROSSOVER RELIEF VALVE .....   | 161-162       |
| TRIPLE GEAR PUMP .....   | 163-164       |
| 6 SPOOL VALVE .....  | 165-166       |
| VALVE SECTION (RIGHT HAND TRAVEL (6 SPOOL VALVE)) .....                          | 167-168       |
| VALVE SECTION (BOOM (6 SPOOL VALVE)) .....                                       | 169-170       |
| VALVE SECTION (BUCKET (6 SPOOL VALVE)) .....                                     | 171-172       |
| VALVE SECTION (AUXILIARY (6 SPOOL VALVE)) .....                                  | 173-174       |
| VALVE SECTION (ARM (6 SPOOL VALVE)) .....  | 175-176       |
| VALVE SECTION (LEFT HAND TRAVEL (6 SPOOL VALVE)) .....                           | 177-178       |
| END COVER (6 SPOOL VALVE) .....  | 179-182       |
| 3 SPOOL VALVE .....  | 183-184       |
| VALVE SECTION (HOUSE SWING (3 SPOOL VALVE)) .....                                | 185-186       |
| VALVE SECTION (BLADE (3 SPOOL VALVE)) .....                                      | 187-188       |
| VALVE SECTION (BOOM SWING (3 SPOOL VALVE)) .....                                 | 189-190       |
| END COVER (3 SPOOL VALVE) .....  | 191-194       |
| ARM CYLINDER .....   | 195-198       |

**Hello**

**Thank you very much for your download.**

**In the last page of this PDF document.**

**There is a link.**

**Please click on that link and return to our website.**

**Then you can get the complete manual immediately.**

**No need to wait.**

**Thanks for continuing to read the documentation.**

**Best wishes.**

## 331 CONTENTS (Cont'd)

|  |                |
|--|----------------|
| <b>CONTROLS (Cont'd)</b> .....                               | <b>95-214</b>  |
| BLADE CYLINDER .....   | 199-202        |
| BOOM CYLINDER .....  | 203-208        |
| BUCKET CYLINDER .....  | 209-210        |
| SWING CYLINDER .....   | 211-214        |
| <b>ELECTRICAL SYSTEMS</b> .....                              | <b>215-226</b> |
| ELECTRICAL SYSTEMS .....                                     | 215-218        |
| ALTERNATOR .....   | 219-222        |
| STARTER .....  | 223-226        |
| <b>POWER UNIT</b> .....                                      | <b>227-284</b> |
| RADIATOR, ALTERNATOR & AIR CLEANER MOUNTING .....            | 227-230        |
| ENGINE MOUNTING & MUFFLER .....                              | 231-232        |
| FLYWHEEL .....   | 233-234        |
| FAN & ALTERNATOR .....                                       | 235-236        |
| ROCKER ARM COVER .....                                       | 237-238        |
| ROCKER ARM & VALVES .....                                    | 239-240        |
| CYLINDER HEAD .....  | 241-242        |
| OIL PAN .....  | 243-244        |
| GEARCASE .....   | 245-246        |
| CRANKCASE .....  | 247-248        |
| PISTON & CRANKSHAFT .....                                    | 249-250        |
| MAIN BEARING CASE .....                                      | 251-252        |
| CAMSHAFT .....   | 253-254        |
| FUEL CAMSHAFT .....  | 255-256        |
| GOVERNOR .....   | 257-258        |
| SPEED CONTROL PLATE .....                                    | 259-260        |
| WATER PUMP .....   | 261-262        |
| STOP LEVER .....   | 263-264        |
| MANIFOLDS .....  | 265-266        |
| WATER FLANGE & THERMOSTAT .....                              | 267-268        |
| INJECTION PUMP .....   | 269-270        |
| FUEL SYSTEM AND TANKS .....                                  | 271-272        |
| INJECTOR PUMP .....  | 273-274        |
| INJECTOR NOZZLES .....                                       | 275-276        |
| NOZZLE HOLDER .....  | 277-278        |
| UPPER GASKET KIT .....                                       | 279-280        |
| LOWER GASKET KIT .....                                       | 281-282        |
| AIR CLEANER .....  | 283-284        |
| <b>ACCESSORIES &amp; OPTIONS</b> .....                       | <b>289-386</b> |
| AUGER .....  | 289-302        |
| AUGER MOUNTING KIT .....                                     | 303-304        |
| HYDRAULIC MOTOR .....  | 305-310        |
| AUXILIARY RELIEF KIT .....                                   | 311-312        |
| BELLY PAN KIT .....  | 313-314        |
| BREAKER MOUNTING KIT (2500X & 3500X BREAKER) .....           | 315-316        |
| 2500/3500 BREAKER MOUNTING PACK .....                        | 317-318        |
| BREAKER MOUNTING KIT (2560, 3560, 2570 & 3570 BREAKER) ..... | 319-320        |
| PORT RELIEF KIT .....  | 321-322        |
| BUCKET .....   | 323-326        |
| BUCKET TEETH .....   | 327-328        |
| CAB DOOR KIT .....   | 329-330        |
| CAB ENCLOSURE .....  | 331-332        |
| CHARGE KIT .....   | 333-334        |
| CLAMP .....  | 335-336        |
| CROSSPORT RELIEF VALVE KIT .....                             | 337-338        |
| CROSSPORT RELIEF VALVE .....                                 | 339-340        |
| DECALS .....   | 341-348        |
| FOPS KIT .....   | 349-350        |
| HYDRAULIC BREAKER (2500) .....                               | 351-354        |
| HYDRAULIC BREAKER (2560 & 2570) .....                        | 355-358        |
| HYDRAULIC BREAKER TOOLS .....                                | 359-360        |
| HYDRAULIC BREAKER (3500) .....                               | 361-364        |
| YDRAULIC BREAKER 32560 & 3570) .....                         | 365-367        |
| OPERATOR HANDBOOK KIT .....                                  | 369-370        |
| RAINGUARD KIT .....  | 371-372        |
| SELECTOR VALVE ASSY .....                                    | 373-374        |

## 331 CONTENTS (Cont'd)

|   |                |
|---|----------------|
| <b>ACCESSORIES &amp; OPTIONS (Cont'd)</b> ..... | <b>287-386</b> |
| SPECIAL APPLICATION KIT .....                   | 375-378        |
| TANK HEATER KIT .....                           | 379-382        |
| WORK LIGHT KIT .....                            | 383-384        |
| BULK ITEMS .....                                | 385-386        |
| <b>NUMERICAL INDEX</b> .....                    | <b>387</b>     |

## 331 CONTENTS

|  |               |
|--|---------------|
| <b>MAIN FRAME</b> .....  | <b>13-56</b>  |
| UPPERSTRUCTURE, COUNTERWEIGHTS & SIDE COVERS .....                               | 13-14         |
| ENGINE COVERS & INSULATION .....   | 15-16         |
| SIDE COVERS & TANKS .....  | 17-18         |
| CANOPY AND MOUNTING .....  | 19-20         |
| CAB MOUNTING .....   | 21-24         |
| OPERATOR CAB .....   | 25-38         |
| WINDOW ASSY .....  | 39-40         |
| OPERATOR CAB (DOOR) .....  | 41-42         |
| *OPERATOR CAB (DOOR) .....   | 43-44         |
| HEATER .....   | 45-48         |
| SEAT .....   | 49-56         |
| <b>UNDERCARRIAGE</b> .....   | <b>57-86</b>  |
| UNDERCARRIAGE .....  | 57-58         |
| TRACK DERAILING KIT .....  | 59-60         |
| RUBBER TRACK KIT .....   | 61-62         |
| STEEL TRACK KIT .....  | 63-64         |
| RECOIL SPRING .....  | 65-68         |
| FRONT IDLER (FOR ALL STEEL TRACKS & FOR RUBBER TRACKS ON EUROPEAN MODELS) .....  | 69-70         |
| *FRONT IDLER (FOR ALL STEEL TRACKS & FOR RUBBER TRACKS ON EUROPEAN MODELS) ..... | 71-72         |
| FRONT IDLER (FOR ALL RUBBER TRACKS - EXCEPT ON EUROPEAN MODELS) .....            | 73-74         |
| *FRONT IDLER (FOR ALL RUBBER TRACKS - EXCEPT ON EUROPEAN MODELS) .....           | 75-76         |
| TRACK ROLLER (FOR ALL STEEL TRACKS & FOR RUBBER TRACKS ON EUROPEAN MODELS) ..... | 77-78         |
| TRACK ROLLER (FOR ALL RUBBER TRACKS - EXCEPT FOR EUROPEAN MODELS) .....          | 79-80         |
| *TRACK ROLLER .....  | 81-82         |
| TRACK ROLLER .....   | 83-84         |
| TRACKS .....   | 85-86         |
| <b>WORK EQUIPMENT</b> .....  | <b>87-94</b>  |
| SWING BRACKET .....  | 87-88         |
| ARM & BUCKET LINK .....  | 89-90         |
| BOOM .....   | 91-92         |
| BLADE .....  | 93-94         |
| <b>CONTROLS</b> .....  | <b>95-214</b> |
| CONTROL CONSOLE, FLOORBOARDS AND SEAT .....                                      | 95-98         |
| L.H. CONTROL CONSOLE .....   | 99-100        |
| BLADE, BOOMSWING, AUXILIARY & THROTTLE CONTROLS .....                            | 101-104       |
| TRAVEL CONTROLS .....  | 105-106       |
| L.H. JOYSTICK CONTROLS .....   | 107-110       |
| R.H. JOYSTICK CONTROLS .....   | 111-114       |
| HYDRAULIC CIRCUITRY .....  | 115-134       |
| SWIVEL JOINT .....   | 135-138       |
| ACCUMULATOR VALVE .....  | 139-140       |
| R.H. JOYSTICK CONTROLS .....   | 141-142       |
| L.H. JOYSTICK CONTROLS .....   | 143-144       |
| SELECTOR VALVE .....   | 145-146       |
| 2 SPEED VALVE .....  | 147-148       |
| TRAVEL MOTOR .....   | 149-154       |
| CHECK VALVE .....  | 155-156       |
| SWING TRANSMISSION .....   | 157-158       |
| SWING MOTOR .....  | 159-160       |
| CROSSOVER RELIEF VALVE .....   | 161-162       |
| TRIPLE GEAR PUMP .....   | 163-164       |
| 6 SPOOL VALVE .....  | 165-166       |
| VALVE SECTION (RIGHT HAND TRAVEL (6 SPOOL VALVE)) .....                          | 167-168       |
| VALVE SECTION (BOOM (6 SPOOL VALVE)) .....                                       | 169-170       |
| VALVE SECTION (BUCKET (6 SPOOL VALVE)) .....                                     | 171-172       |
| VALVE SECTION (AUXILIARY (6 SPOOL VALVE)) .....                                  | 173-174       |
| VALVE SECTION (ARM (6 SPOOL VALVE)) .....  | 175-176       |
| VALVE SECTION (LEFT HAND TRAVEL (6 SPOOL VALVE)) .....                           | 177-178       |
| END COVER (6 SPOOL VALVE) .....  | 179-182       |
| 3 SPOOL VALVE .....  | 183-184       |
| VALVE SECTION (HOUSE SWING (3 SPOOL VALVE)) .....                                | 185-186       |
| VALVE SECTION (BLADE (3 SPOOL VALVE)) .....                                      | 187-188       |
| VALVE SECTION (BOOM SWING (3 SPOOL VALVE)) .....                                 | 189-190       |
| END COVER (3 SPOOL VALVE) .....  | 191-194       |
| ARM CYLINDER .....   | 195-198       |

## 331 CONTENTS (Cont'd)

|  |                |
|--|----------------|
| <b>CONTROLS (Cont'd)</b> .....                               | <b>95-214</b>  |
| BLADE CYLINDER .....   | 199-202        |
| BOOM CYLINDER .....  | 203-208        |
| BUCKET CYLINDER .....  | 209-210        |
| SWING CYLINDER .....   | 211-214        |
| <b>ELECTRICAL SYSTEMS</b> .....                              | <b>215-226</b> |
| ELECTRICAL SYSTEMS .....                                     | 215-218        |
| ALTERNATOR .....   | 219-222        |
| STARTER .....  | 223-226        |
| <b>POWER UNIT</b> .....                                      | <b>227-284</b> |
| RADIATOR, ALTERNATOR & AIR CLEANER MOUNTING .....            | 227-230        |
| ENGINE MOUNTING & MUFFLER .....                              | 231-232        |
| FLYWHEEL .....   | 233-234        |
| FAN & ALTERNATOR .....                                       | 235-236        |
| ROCKER ARM COVER .....                                       | 237-238        |
| ROCKER ARM & VALVES .....                                    | 239-240        |
| CYLINDER HEAD .....  | 241-242        |
| OIL PAN .....  | 243-244        |
| GEARCASE .....   | 245-246        |
| CRANKCASE .....  | 247-248        |
| PISTON & CRANKSHAFT .....                                    | 249-250        |
| MAIN BEARING CASE .....                                      | 251-252        |
| CAMSHAFT .....   | 253-254        |
| FUEL CAMSHAFT .....  | 255-256        |
| GOVERNOR .....   | 257-258        |
| SPEED CONTROL PLATE .....                                    | 259-260        |
| WATER PUMP .....   | 261-262        |
| STOP LEVER .....   | 263-264        |
| MANIFOLDS .....  | 265-266        |
| WATER FLANGE & THERMOSTAT .....                              | 267-268        |
| INJECTION PUMP .....   | 269-270        |
| FUEL SYSTEM AND TANKS .....                                  | 271-272        |
| INJECTOR PUMP .....  | 273-274        |
| INJECTOR NOZZLES .....                                       | 275-276        |
| NOZZLE HOLDER .....  | 277-278        |
| UPPER GASKET KIT .....                                       | 279-280        |
| LOWER GASKET KIT .....                                       | 281-282        |
| AIR CLEANER .....  | 283-284        |
| <b>ACCESSORIES &amp; OPTIONS</b> .....                       | <b>289-386</b> |
| AUGER .....  | 289-302        |
| AUGER MOUNTING KIT .....                                     | 303-304        |
| HYDRAULIC MOTOR .....  | 305-310        |
| AUXILIARY RELIEF KIT .....                                   | 311-312        |
| BELLY PAN KIT .....  | 313-314        |
| BREAKER MOUNTING KIT (2500X & 3500X BREAKER) .....           | 315-316        |
| 2500/3500 BREAKER MOUNTING PACK .....                        | 317-318        |
| BREAKER MOUNTING KIT (2560, 3560, 2570 & 3570 BREAKER) ..... | 319-320        |
| PORT RELIEF KIT .....  | 321-322        |
| BUCKET .....   | 323-326        |
| BUCKET TEETH .....   | 327-328        |
| CAB DOOR KIT .....   | 329-330        |
| CAB ENCLOSURE .....  | 331-332        |
| CHARGE KIT .....   | 333-334        |
| CLAMP .....  | 335-336        |
| CROSSPORT RELIEF VALVE KIT .....                             | 337-338        |
| CROSSPORT RELIEF VALVE .....                                 | 339-340        |
| DECALS .....   | 341-348        |
| FOPS KIT .....   | 349-350        |
| HYDRAULIC BREAKER (2500) .....                               | 351-354        |
| HYDRAULIC BREAKER (2560 & 2570) .....                        | 355-358        |
| HYDRAULIC BREAKER TOOLS .....                                | 359-360        |
| HYDRAULIC BREAKER (3500) .....                               | 361-364        |
| YDRAULIC BREAKER 32560 & 3570) .....                         | 365-367        |
| OPERATOR HANDBOOK KIT .....                                  | 369-370        |
| RAINGUARD KIT .....  | 371-372        |
| SELECTOR VALVE ASSY .....                                    | 373-374        |



## 331 CONTENTS (Cont'd)

|   |                |
|---|----------------|
| <b>ACCESSORIES &amp; OPTIONS (Cont'd)</b> ..... | <b>287-386</b> |
| SPECIAL APPLICATION KIT .....                   | 375-378        |
| TANK HEATER KIT .....                           | 379-382        |
| WORK LIGHT KIT .....                            | 383-384        |
| BULK ITEMS .....                                | 385-386        |
| <b>NUMERICAL INDEX</b> .....                    | <b>387</b>     |

# GENERAL INFORMATION

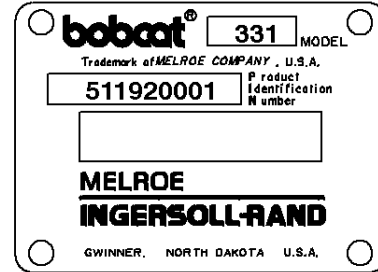
When using the machine serial number, use the complete number.

Some Serial Number breaks are not available at time of printing. These are listed as & Below or & Above.

The number shown in the quantity column in this manual is the number of parts needed for the illustration on the page. For some parts an "x" will be shown in the quantity column. This "x" indicates that the quantity to be used is "As Needed".

When references L.H. and R.H. are used in this manual, it is done from the operator's seat in the forward operating position.

Some of the illustrations and information found in this parts manual were supplied to Bobcat y by machine component companies.



## ABBREVIATIONS & SYMBOLS

**SALES = Order from Gwinner Sales Department**

**NSS = Not Serviced Separately**

**NAP = Not Available as Parts**

**\* = Changed or Added Sections, Pages or Part Numbers**

**Disposition Code Definition (Found in the Remarks Column)**

**[A] = Use Up**

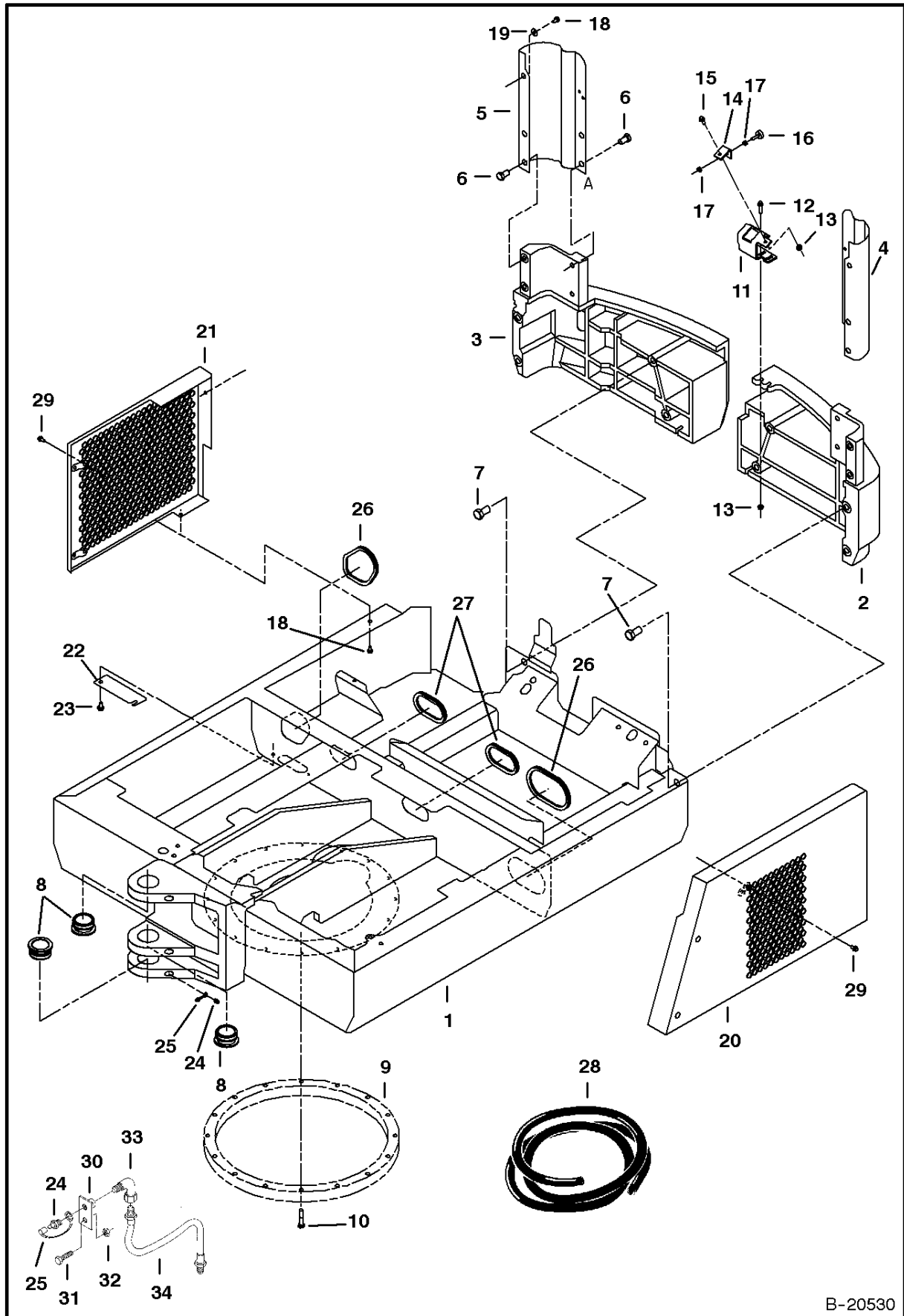
**[B] = Use Up on Other Application (See PNI)**

**[C] = File PDR Report With Bobcat Parts Sales**

**[D] = Part Number Error**

|                              |         |   |
|------------------------------|---------|---|
| Explications en francais     | Grid Nb | 3 |
| Erklärungen auf deutsch      | Grid Nb | 4 |
| Spiegazioni in italiano      | Grid Nb | 5 |
| Explicaciones en espanol     | Grid Nb | 6 |
| Verklaring in het Nederlands | Grid Nb | 7 |

# UPPERSTRUCTURE, COUNTERWEIGHTS & SIDE COVERS

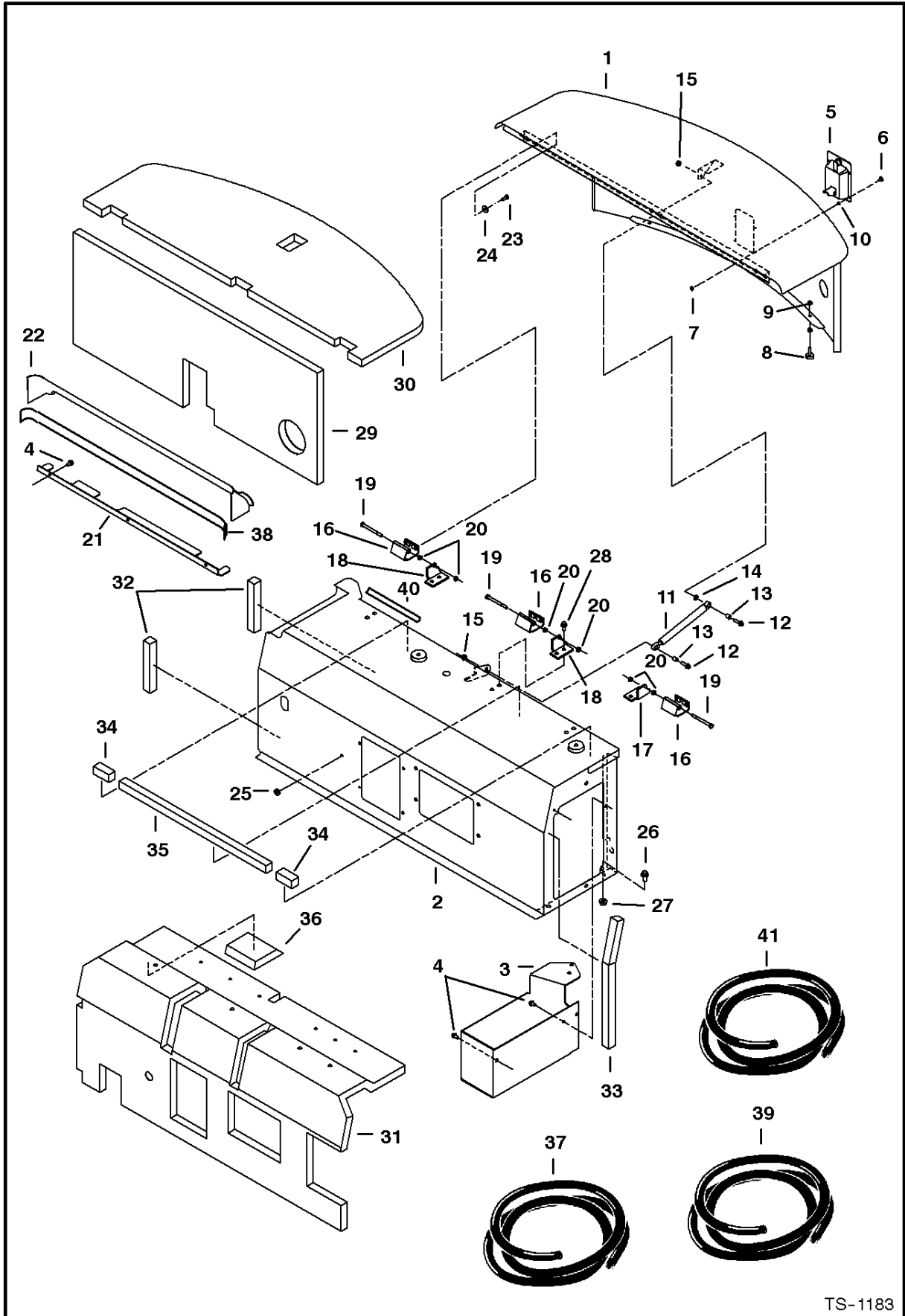


B-20530

## UPPERSTRUCTURE, COUNTERWEIGHTS &amp; SIDE COVERS

| Ref.N° | Part N°    | Description                                    | Remarks  | Serial N° | Qty. |
|--------|------------|--|--|-----------|------|
| 1      | 6588459    | UPPERSTRUCTUR<br>E frame(01xXcom3T<br>B}H~10{M |  |           | x    |
| 2      | 6588425    | COUNTERWEIGHT                                  | left hand  |           | 1    |
| 3      | 6588426    | COUNTERWEIGHT                                  | right hand   |           | 1    |
| 4      | 6587895    | BUMPER   | left hand  |           | 1    |
| 5      | 6588131    | BUMPER   | right hand   |           | 1    |
| 6      | 1CM-1630   | BOLT   |  |           | 8    |
| 7      | 1CM-2040   | BOLT   |  |           | 8    |
| 8      | 6588095    | BUSHING  |  |           | 3    |
| 9      |            | BEARING  | swing - see page SEAT(49)  |           | 1    |
| 10     | 7CM-1260   | SCREW  |  |           | 16   |
| 11     | 6589060    | BRACKET  | latch  |           | 1    |
| 12     | 29CM-840   | BOLT   |  |           | 2    |
| 13     | 42DM-8     | NUT  |  |           | 3    |
| 14     | 6588539    | ANGLE  |  |           | 1    |
| 15     | 29CM-825   | SCREW  |  |           | 1    |
| 16     | 6655399    | BUMPER   |  |           | 1    |
| 17     | 61D-5      | NUT  |  |           | 2    |
| 18     | 29CM-816   | BOLT   |  |           | 2    |
| 19     | 17EM-80    | WASHER   |  |           | 2    |
| 20     | 6588530    | COVER  | left hand  |           | 1    |
| 21     | 6588532    | COVER  | right hand   |           | 1    |
| 22     | 6539292    | COVER  |  |           | 1    |
| 23     | 26GM-10020 | SCREW  | Was 29CM-1020 [B]  |           | 2    |
| 24     | 10H-25     | GREASE ZERK                                    |  |           | 4    |
| 25     | 6652943    | COVER, GREASE                                  | grease fitting   |           | 4    |
| 26     | NAP        | MOULDING                                       | 18' (454 mm) long -Order Ref. UPPERSTRUCTURE ,<br>COUNTERWEIGHTS & SIDE COVERS(28) |           | 2    |
| 27     | NAP        | MOULDING                                       | 12' (308mm) long - Order Ref. UPPERSTRUCTURE ,<br>COUNTERWEIGHTS & SIDE COVERS(28) |           | 2    |
| 28     | 6659603    | MOULDING                                       | bulk - Order Per Foot  |           | x    |
| 29     | 26GM-8016  | SCREW  |  |           | 6    |
| 30     | 6586104    | PLATE  | Was 6583104[D]   |           | 1    |
| 31     | 29CM-1020  | BOLT   |  |           | 1    |
| 32     | 1DM-10     | NUT  |  |           | 1    |
| 33     | 26F-1      | ELBOW  |  |           | 1    |
| 34     | 6531180    | HOSE   |  |           | 1    |

# ENGINE COVERS & INSULATION

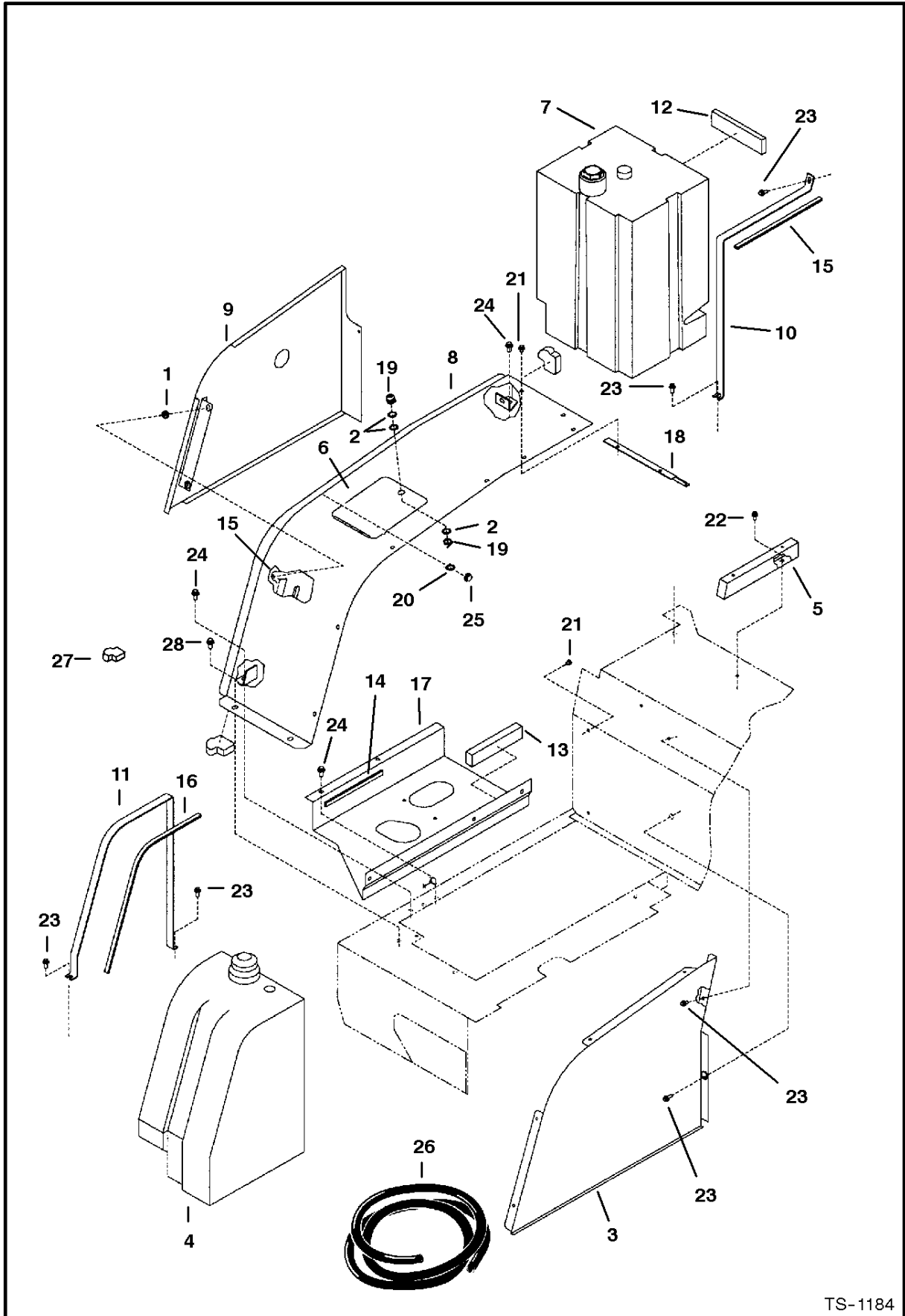


TS-1183

## ENGINE COVERS &amp; INSULATION

| Ref.N° | Part N°    | Description                 | Remarks   | Serial N° | Qty. |
|--------|------------|-----------------------------|---|-----------|------|
| 1      | 6588526    | COVER                       | engine  |           | 1    |
| 2      | 6588438    | COVER                       |   |           | 1    |
| 3      | 6588534    | TOOL BOX                    |   |           | 1    |
| 4      | 29CM-816   | BOLT                        |   |           | 5    |
| 5      | 6674239    | LATCH                       | Was 6664447[A]  |           | 1    |
| 5      | 6587458    | KEY SET                     |   |           | 1    |
| 6      | 6587499    | SCREW                       |   |           | 4    |
| 7      | 49DM-6     | NUT                         |   |           | 4    |
| 8      | 6655399    | BUMPER                      |   |           | 2    |
| 9      | 61D-5      | NUT                         |   |           | 4    |
| 10     | 15EM-60    | WASHER                      |   |           | 4    |
| 11     | 6664262    | CYLINDER                    | gas spring  |           | 1    |
| 12     | 29CM-830   | SCREW                       |   |           | 2    |
| 13     | 6588293    | BUSHING                     |   |           | 2    |
| 14     | 1EM-80     | WASHER                      |   |           | 1    |
| 15     | 42DM-8     | NUT                         |   |           | 2    |
| 16     | 6588133    | HINGE                       | welded onto Ref. ENGINE COVERS & INSULATION(1)<br>on later models   |           | 3    |
| 17     | 6589032    | ANGLE(L.H.081<com38-}H~10{M |   |           | 1    |
| 18     | 6589033    | ANGLE                       |   |           | 2    |
| 19     | 1CM-890    | BOLT                        |   |           | 3    |
| 20     | 1DM-8      | NUT                         |   |           | 6    |
| 21     | 6588648    | SUPPORT(081;com3;}H~10{M    |   |           | 1    |
| 22     | 6588070    | COVER(0818com3KB}H~10{M     |   |           | 1    |
| 23     | 1CM-820    | BOLT                        |   |           | 6    |
| 24     | 17EM-80    | WASHER                      |   |           | 6    |
| 25     | 515069     | GROMMET                     |   |           | 1    |
| 26     | 29CM-1225  | SCREW                       |   |           | 4    |
| 27     | 45DM-12    | NUT                         |   |           | 4    |
| 28     | 26GM-10020 | SCREW                       | Was 29CM-1020 [B]   |           | 6    |
| 29     | 6588541    | INSULATION                  |   |           | 1    |
| 30     | 6588542    | INSULATION                  |   |           | 1    |
| 31     | 6588543    | INSULATION                  |   |           | 1    |
| 32     | NAP        | INSULATION                  | 8' (206mm) long - Order Ref. ENGINE COVERS & INSULATION(37)   |           | 2    |
| 33     | NAP        | INSULATION                  | 21' (500mm) long - Order Ref. ENGINE COVERS & INSULATION(37)  |           | 1    |
| 34     | NAP        | INSULATION                  | 3' (76mm) long -Order Ref. ENGINE COVERS & INSULATION(37)   |           | 2    |
| 35     | NAP        | INSULATION                  | 28' (712mm) long -Order Ref. ENGINE COVERS & INSULATION(37)   |           | 1    |
| 36     | 6589244    | INSULATION                  |   |           | 1    |
| 37     | 6554274    | INSULATION                  | bulk - sold per foot  |           | x    |
| 38     | NAP        | TAPE                        | double backed - for attaching Ref. ENGINE COVERS & INSULATION(22) to the Cab/Canopy - 48" (1220mm) long - Order Ref. ENGINE |           | 2    |
| 39     | 6900669    | TAPE                        | bulk - sold per foot - Was 6665212[A]   |           | x    |
| 40     | NAP        | SEAL                        | drip rail - 12" (305mm) long - order Ref. ENGINE COVERS & INSULATION(41)  |           | 1    |
| 41     | 6670537    | SEAL                        | bulk - sold per foot  |           | x    |

# SIDE COVERS & TANKS



TS-1184

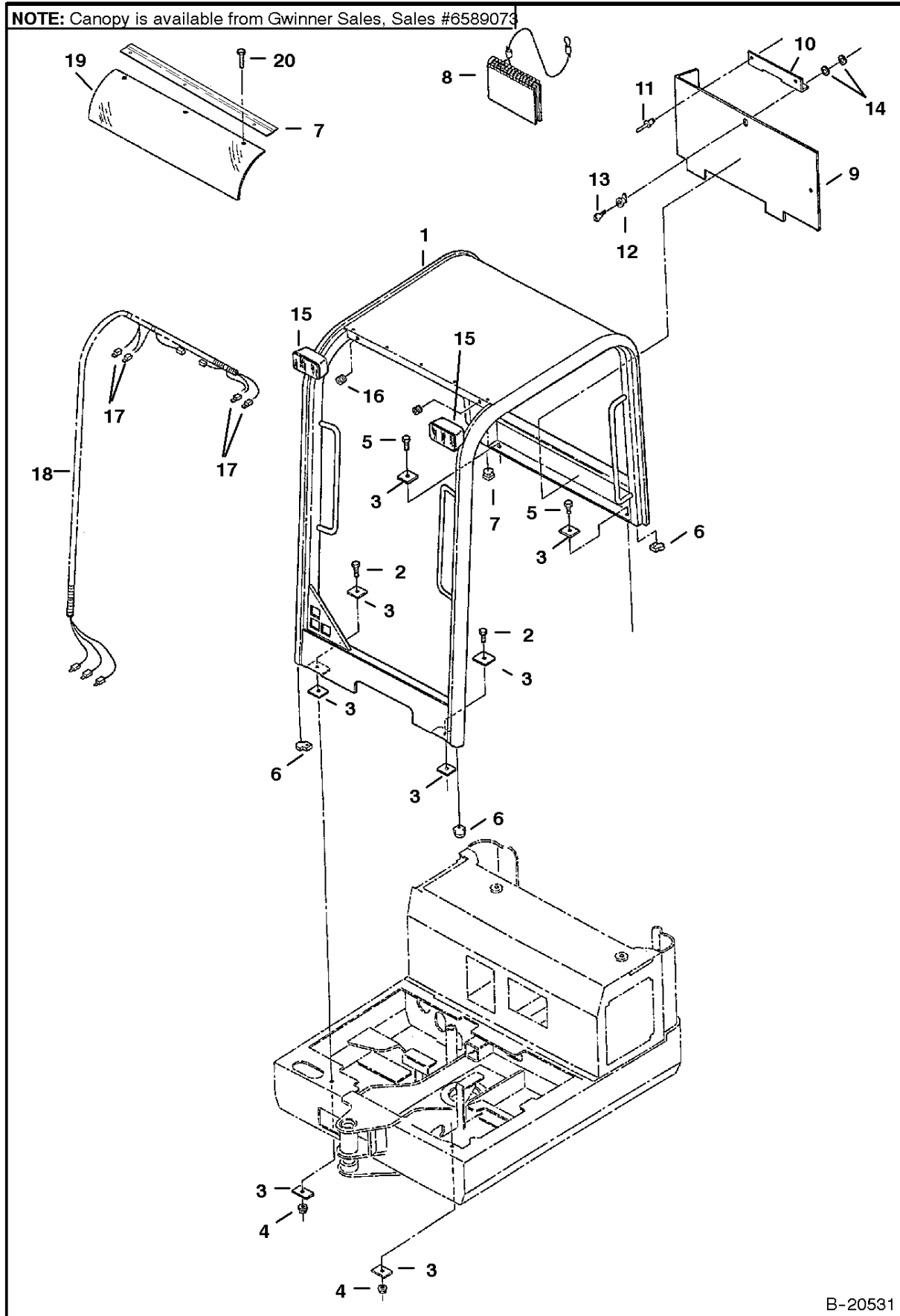
## SIDE COVERS &amp; TANKS

| Ref.N° | Part N°    | Description | Remarks   | Serial N° | Qty. |
|--------|------------|-------------|---|-----------|------|
| 1      | 515069     | GROMMET     |   |           | 2    |
| 2      | 6536802    | WASHER      |   |           | 3    |
| 3      | NAP        | PLATE       | Order 6587544 (1) & Ref. SIDE COVERS & TANKS(23)<br>(1) - Was 6587543 [A] |           | 1    |
| 3      | 6587544    | PLATE       |   |           | 1    |
| 4      | 6587548    | TANK        | fuel - See Page FUEL SYSTEM & TANKS(8)                                    |           | 1    |
| 5      | NAP        | BRACKET     | Order 6587552 (1) & Ref. SIDE COVERS & TANKS(21)<br>(1) - Was 6588708 [A] |           | 1    |
| 5      | 6587552    | BRACKET     |   |           | 1    |
| 6      | NAP        | COVER       | Order 6806888 - Was 6587555[A]  |           | 1    |
| 6      | 6806888    | COVER       | 1 piece   |           | 1    |
| 7      | 6588484    | TANK        | hydraulic - See Page FUEL SYSTEM & TANKS(8)                               |           | 1    |
| 8      | NAP        | TUBE        | Order 6806888 - Was 6588485[A]  |           | 1    |
| 9      | 6588486    | PLATE       | side cover  |           | 1    |
| 10     | 6588664    | STRAP       | hydraulic tank  |           | 1    |
| 11     | 6588783    | STRAP       | fuel tank   |           | 1    |
| 12     | 6588938    | FOAM        |   |           | 1    |
| 13     | 6588939    | FOAM        |   |           | 1    |
| 14     | NAP        | FOAM        | 9'(230mm) long - Order Ref. SIDE COVERS & TANKS(26)                       |           | 1    |
| 15     | NAP        | FOAM        | 14'(350mm) long - Order Ref.SIDE COVERS & TANKS(26)                       |           | 2    |
| 16     | NAP        | FOAM        | 24'(620mm) long - Order Ref.SIDE COVERS & TANKS(26)                       |           | 1    |
| 17     | NAP        | PAN         | Order 6587551 (1) & Ref. 23 (1) - Was 6588937 [A]                         |           | 1    |
| 17     | 6587551    | PAN         |   |           | 1    |
| 18     | NAP        | BRACKET     | Order 6588944 (1) & Ref. SIDE COVERS & TANKS(21)<br>(1) - Was 6588969 [A] |           | 1    |
| 18     | 6588944    | BRACKET     |   |           | 1    |
| 19     | 6661695    | LOCK ASSY.  |   |           | 1    |
| 19     | 6587458    | KEY SET     |   |           | 1    |
| 20     | 15EM-120   | WASHER      |   |           | 6    |
| 21     | 26GM-8012  | BOLT        | Was 29CM-812 [B]  |           | 10   |
| 22     | 29CM-816   | BOLT        |   |           | 1    |
| 23     | 26GM-8016  | SCREW       | Was 29CM-820 [B]  |           | 6    |
| 24     | 29CM-1020  | BOLT        |   |           | 1    |
| 25     | 42DM-10    | NUT         |   |           | 6    |
| 26     | 6632217    | SEAL        | bulk - order per foot   |           | x    |
| 27     | 6589660    | FOAM        |   |           | 2    |
| 28     | 26GM-10020 | SCREW       |   |           | 8    |



# CANOPY AND MOUNTING

**NOTE:** Canopy is available from Gwinner Sales, Sales #6589073

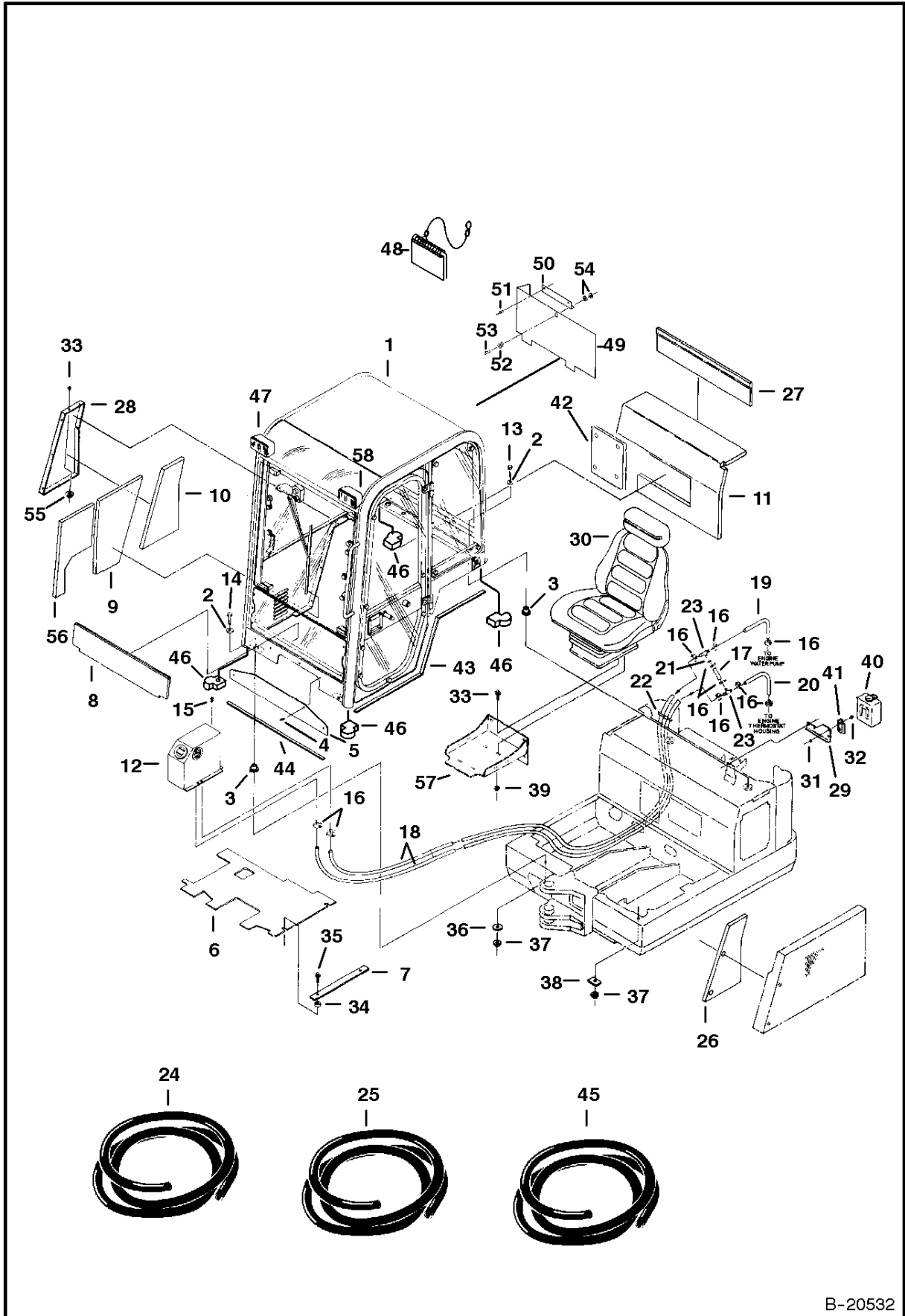


B-20531

## CANOPY AND MOUNTING

| Ref.N° | Part N°   | Description | Remarks   | Serial N° | Qty. |
|--------|-----------|-------------|---|-----------|------|
| 1      | SALES     | CANOPY      | See Note  |           | 1    |
| 2      | 7CM-1240  | SCREW       |   |           | 2    |
| 3      | 6588177   | PLATE       |   |           | 8    |
| 4      | 43DM-12   | NUT         |   |           | 2    |
| 5      | 7CM-1225  | BOLT        |   |           | 2    |
| 6      | 6807987   | INSULATION  | Was 6589660[A]                                    |           | 3    |
| 7      | 6805291   | BRACKET     |   |           | 1    |
| 8      | 6596919   | HANDBOOK    | Operators - English                               |           | 1    |
| 8      | 6596920   | HANDBOOK    | Operators - Danish                                |           | 1    |
| 8      | 6596921   | HANDBOOK    | Operators - French                                |           | 1    |
| 8      | 6596922   | HANDBOOK    | Operators - German                                |           | 1    |
| 8      | 6596924   | HANDBOOK    | Operators - Italian                               |           | 1    |
| 8      | 6596925   | HANDBOOK    | Operators - Spanish                               |           | 1    |
| 8      | 6596926   | HANDBOOK    | Operators - Portuguese                            |           | 1    |
| 8      | 6596927   | HANDBOOK    | Operators - Dutch                                 |           | 1    |
| 8      | 6596928   | HANDBOOK    | Operators - Japanese                              |           | 1    |
| 8      | 6596929   | HANDBOOK    | Operators - Norwegian                             |           | 1    |
| 8      | 6596930   | HANDBOOK    | Operators - Russian                               |           | 1    |
| 8      | 6596931   | HANDBOOK    | Operators - Swedish                               |           | 1    |
| 8      | 6596932   | HANDBOOK    | Operators - Finnish                               |           | 1    |
| 8      | 6596933   | HANDBOOK    | Operators - Greek                                 |           | 1    |
| 9      | 6589655   | PANEL       | Storage - Canopy Models                           |           | 1    |
| 9      | 6589656   | PANEL       | Storage - Cab Models                              |           | 1    |
| 10     | 6589657   | ANGLE       |   |           | 1    |
| 11     | 6630207   | RIVET       |   |           | 2    |
| 12     | 6661695   | LOCK ASSY.  |   |           | 1    |
| 13     | 6587458   | KEY SET     |   |           | 1    |
| 14     | 6536802   | WASHER      |   |           | 2    |
| 15     | 17EM-120  | WASHER      |   |           | 1    |
| 16     | NAP       | LIGHT       | Order 6668722 - Was 6664106 [A]                   |           | 2    |
| 16     | 6665700   | SEALED BEAM | for light 6664106                                 |           | 2    |
| 16     | 6664106   | LIGHT       | Was 6667822[A]                                    |           | 2    |
| 16     | 6668721   | BULB        | replacement bulb for 6668722                      |           | 2    |
| 17     | 6628808   | HARNESS     | canopy - also order Ref. CANOPY AND MOUNTING(18 ) |           | 1    |
| 18     | 6519548   | CONNECTOR   | electrical  |           | 4    |
| 19     | 6806131   | WINDOW      | Was 6595792[A]                                    |           | 1    |
| 20     | 6589675   | SCREW       |   |           | 3    |
| 20     | 26GM-6016 | BOLT        | Used W/Ref. CANOPY AND MOUNTING(7)                |           | 3    |

# CAB MOUNTING



B-20532

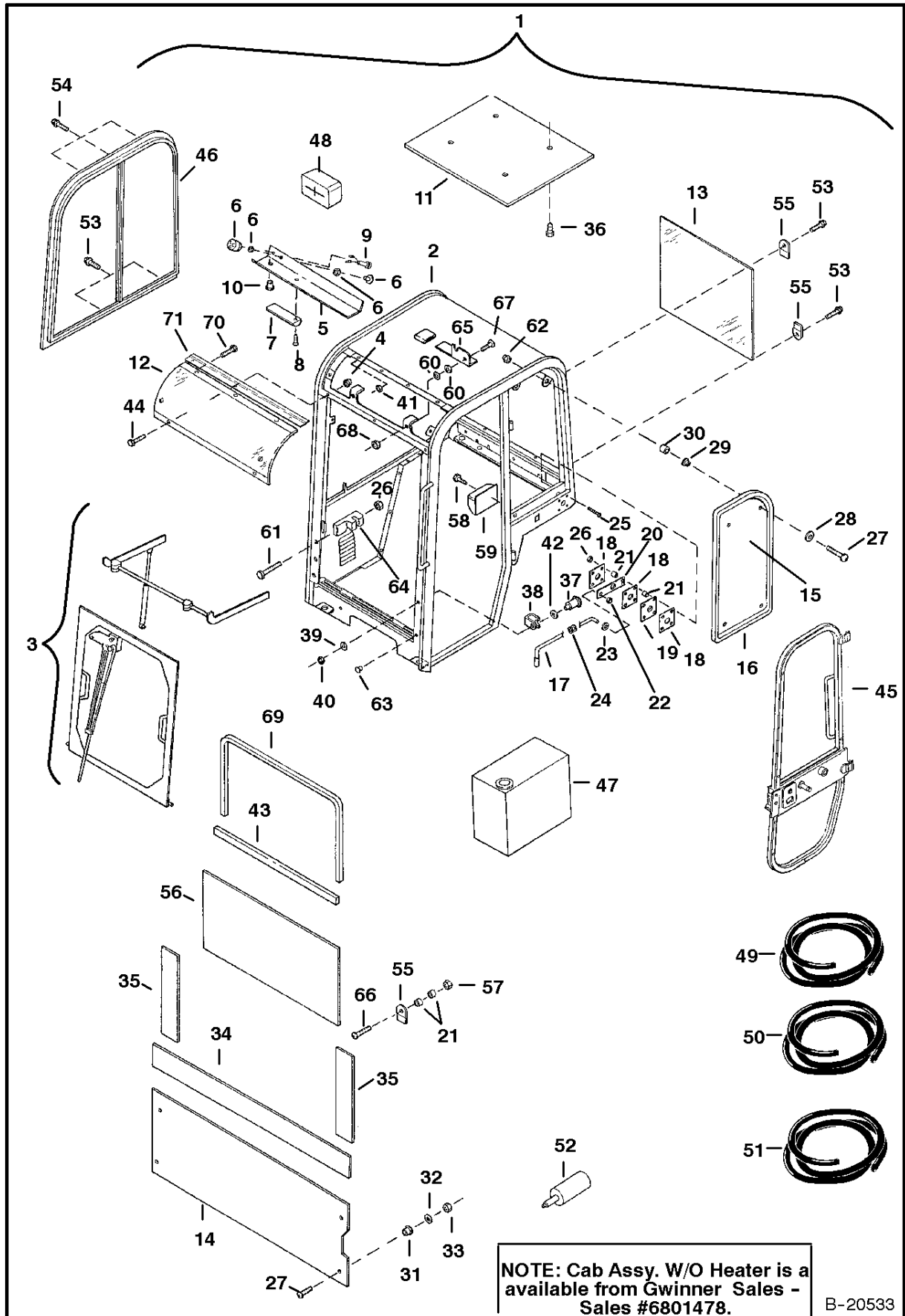
## CAB MOUNTING

| Ref.N° | Part N°    | Description | Remarks   | Serial N°     | Qty. |
|--------|------------|-------------|---|---------------|------|
| 1      |            | CAB ASSY.   | See Pages OPERATOR CAB(1)-HEATER(1)                         |               | 1    |
| 2      | 6805244    | WASHER      | Was 6803445 [A]   |               | 4    |
| 3      | 6560633    | MOUNT       |   |               | 4    |
| 4      | 6589675    | SCREW       | Was 6587499 [A]   |               | 4    |
| 5      | 6588651    | PANEL       |   |               | 1    |
| 6      | 6588713    | FLOORMAT    | cab   | 20001-21267   | 1    |
| 6      | 6589893    | FLOORMAT    | cab   | 21268 & Above | 1    |
| 7      | 6588794    | PLATE       | floormat retainer   |               | 1    |
| 8      | 6802959    | INSULATION  | Was 6588796 [A]   |               | 1    |
| 9      | 6800884    | INSULATION  | Was 6595394 [A]   |               | 1    |
| 10     | 6588798    | INSULATION  |   |               | 1    |
| 11     | 6589346    | INSULATION  | Was 6588799 [A]   |               | 1    |
| 12     | 6663968    | HEATER      | See Pages HEATER(1)   |               | 1    |
| 13     | 1CM-1250   | BOLT        |   |               | 2    |
| 14     | 1CM-1255   | BOLT        |   |               | 2    |
| 15     | 26GM-10020 | SCREW       | Was 29CM-1016 [B]   |               | 1    |
| 16     | 42H-8      | CLAMP       |   |               | 10   |
| 17     | NAP        | HOSE        | 3' (75mm) long - Order Ref. CAB MOUNTING(24)                |               | 1    |
| 18     | NAP        | HOSE        | 70' (1780mm) long - Order Ref. CAB MOUNTING(24)             |               | 2    |
| 19     | NAP        | HOSE        | 10' (250mm) long - Order Ref. CAB MOUNTING(25)              |               | 1    |
| 20     | NAP        | HOSE        | 12' (305mm) long - Order Ref. CAB MOUNTING(25)              |               | 1    |
| 21     | 6585223    | ORIFICE     |   |               | 1    |
| 22     | 6610510    | NYLON TIE   |   |               | 4    |
| 23     | 6564697    | TEE         |   |               | 2    |
| 24     | 889269     | HOSE        | bulk - Order Per Foot                                       |               | x    |
| 25     | 6565977    | HOSE        | bulk - Order Per Foot                                       |               | x    |
| 26     | 6588859    | INSULATION  |   |               | 1    |
| 27     | 6588884    | INSULATION  | W/O Storage compartment                                     |               | 1    |
| 27     | 6589664    | INSULATION  | W/Storage compartment                                       |               | 1    |
| 28     | NAP        | PANEL       | Order 6588891 & Ref. CAB MOUNTING(55) (1) - Was 6588890 [A] |               | 1    |
| 28     | 6588891    | PANEL       |   |               | 1    |
| 29     | 6588955    | BRACKET     | window washer   |               | 1    |
| 30     |            | SEAT        | See Page SEAT(1)  |               | 1    |
| 31     | 1DM-6      | NUT         |   |               | 2    |
| 32     | 29CM-616   | SCREW       |   |               | 2    |
| 33     | 29CM-816   | BOLT        |   |               | 9    |
| 34     | 6503451    | SPACER      |   |               | 2    |
| 35     | 29CM-1030  | SCREW       |   |               | 2    |
| 36     | 17EM-120   | WASHER      |   |               | 1    |
| 37     | 43DM-12    | NUT         |   |               | 2    |
| 38     | 6588177    | PLATE       |   |               | 1    |
| 39     | 45DM-8     | NUT         |   |               | 4    |
| 40     | 6664438    | WASHER      | window - W/Ref. CAB MOUNTING(41)                            |               | 1    |
| 40     | 6664554    | PUMP        |   |               | 1    |
| 40     | NAP        | TANK        | Order Ref. CAB MOUNTING(40)                                 |               | 1    |
| 40     | 6664555    | NOZZLE      | window washer   |               | 1    |
| 40     | 6664556    | HOSE        |   |               | 1    |
| 41     | 6664557    | BRACKET     |   |               | 1    |
| 42     | 6589272    | INSULATION  |   |               | 1    |
| 43     | NAP        | FOAM        | 63'(1600mm) long -Order Ref. CAB MOUNTING(45)               |               | 2    |
| 44     | NAP        | FOAM        | 37'(940mm) long - Order Ref. CAB MOUNTING(45)               |               | 1    |
| 45     | 6801027    | SEAL        | bulk - Sold Per Foot - Was 6511855[B]                       |               | x    |
| 46     | 6807987    | INSULATION  | Was 6589660 [A]   |               | 3    |
| 47     | NAP        | LIGHT       | Order 6668722 - Was 6664106 [A]                             |               | 2    |

## CAB MOUNTING

| Ref.N° | Part N° | Description | Remarks  | Serial N° | Qty. |
|--------|---------|-------------|--|-----------|------|
| 47     | 6665700 | SEALED BEAM | for light 6664106                                    |           | 2    |
| 47     | 6664106 | LIGHT       | Was 6667822[A]                                       |           | 2    |
| 47     | 6668721 | BULB        | replacement bulb for 6668722                         |           | 2    |
| 48     | 6596919 | HANDBOOK    | Operators - English                                  |           | 1    |
| 48     | 6596920 | HANDBOOK    | Operators - Danish                                   |           | 1    |
| 48     | 6596921 | HANDBOOK    | Operators - French                                   |           | 1    |
| 48     | 6596922 | HANDBOOK    | Operators - German                                   |           | 1    |
| 48     | 6596924 | HANDBOOK    | Operators - Italian                                  |           | 1    |
| 48     | 6596925 | HANDBOOK    | Operators - Spanish                                  |           | 1    |
| 48     | 6596926 | HANDBOOK    | Operators - Portuguese                               |           | 1    |
| 48     | 6596927 | HANDBOOK    | Operators - Dutch                                    |           | 1    |
| 48     | 6596928 | HANDBOOK    | Operators - Japanese                                 |           | 1    |
| 48     | 6596929 | HANDBOOK    | Operators - Norwegian                                |           | 1    |
| 48     | 6596930 | HANDBOOK    | Operators - Russian                                  |           | 1    |
| 48     | 6596931 | HANDBOOK    | Operators - Swedish                                  |           | 1    |
| 48     | 6596932 | HANDBOOK    | Operators - Finnish                                  |           | 1    |
| 48     | 6596933 | HANDBOOK    | Operators - Greek                                    |           | 1    |
| 49     | 6589656 | PANEL       | storage - cab models                                 |           | 1    |
| 49     | 6589655 | PANEL       | storage - canopy models                              |           | 1    |
| 50     | 6589657 | ANGLE       |  |           | 1    |
| 51     | 6630207 | RIVET       |  |           | 2    |
| 52     | 6661695 | LOCK ASSY.  |  |           | 1    |
| 53     | 6587458 | KEY SET     |  |           | 1    |
| 54     | 6536802 | WASHER      |  |           | 2    |
| 55     | 42DM-8  | NUT         |  |           | 5    |
| 56     | 6800883 | INSULATION  | Was 6595395 [A]                                      |           | 1    |
| 57     |         | MOUNT       | Seat - See Page CONTROL CONSOLE, FLOORBOARDS AND (1) |           | 1    |

# OPERATOR CAB



## OPERATOR CAB

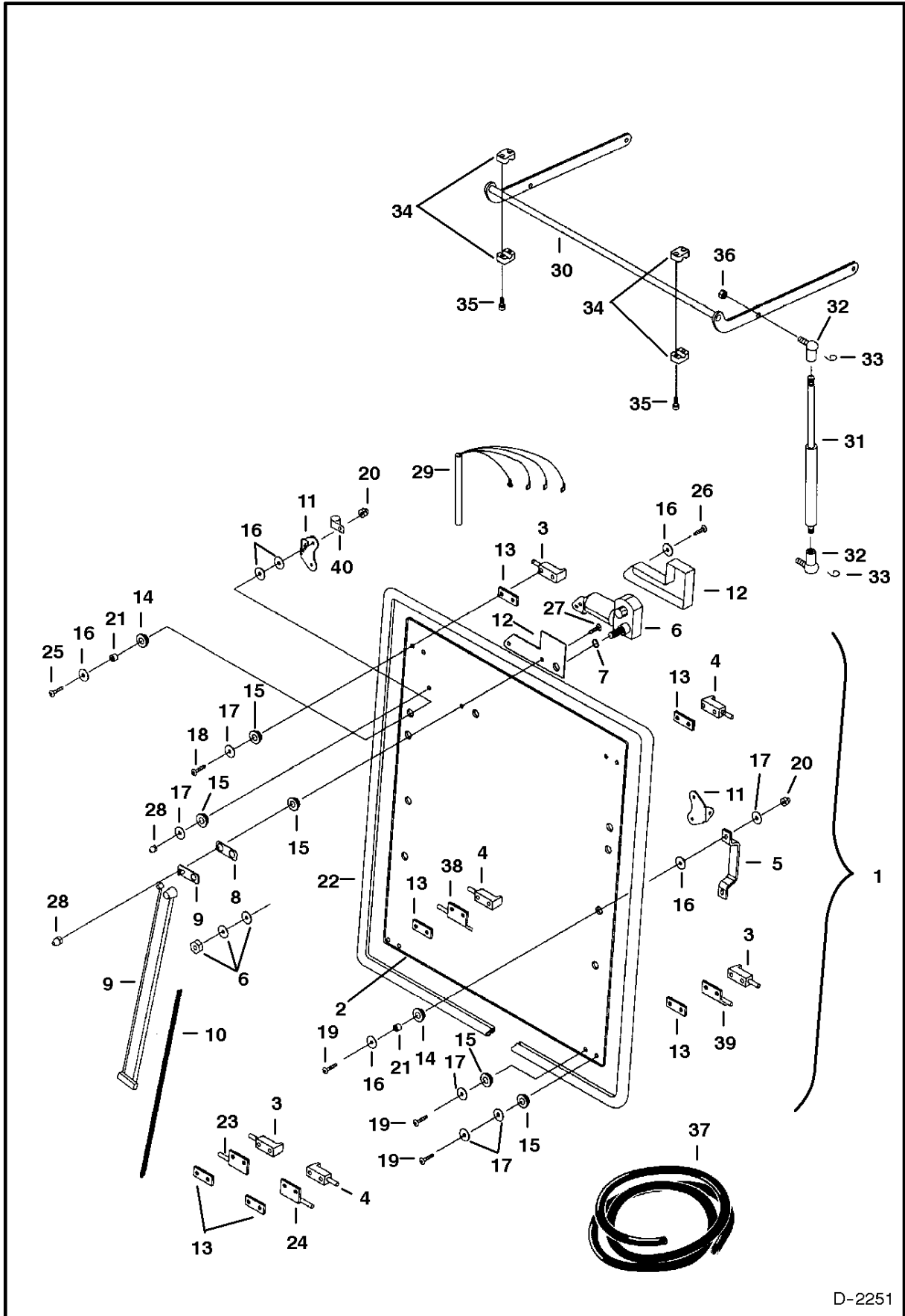
| Ref.N° | Part N° | Description  | Remarks  | Serial N°         | Qty. |
|--------|---------|--------------|--|-------------------|------|
| 1      |         | CAB ASSY.    | W/Refs. OPERATOR CAB(2)- OPERATOR CAB(48) and all items on pages OPERATOR CAB(69) thru OPERATOR CAB(1) - Order 6810477 |                   | 1    |
| 2      | NAP     | CAB          | Weldment - Order 6801477 - Was 6628839 [A]   |                   | 1    |
| 2      | 6801477 | CAB          | Weldment bcom3L9 }H~10{M   |                   | x    |
| 3      |         | WINDOW       | Front - see page OPERATOR CAB(1)   |                   | 1    |
| 4      | 6664103 | NUT          | Acorn #10  |                   | 3    |
| 5      | 6628898 | CONSOLE      | Was 6664564 [A]  |                   | 1    |
| 6      | 6669315 | SWITCH       | Wiper/washer - Was 6664563 [A]   |                   | 1    |
| 7      | 6664084 | DOME LIGHT   |  |                   | 1    |
| 7      | 6665367 | BULB         | Was 6655055[A]   |                   | 1    |
| 8      | 6664049 | SCREW        | Dome light mounting  |                   | 2    |
| 9      | 6513469 | FUSE HOLDER  | Was 6654166 [A]  |                   | 1    |
| 9      | 6656270 | FUSE         | 5amp.  |                   | 1    |
| 10     | 6648358 | GROMMET      |  |                   | 1    |
| 11     | 6628899 | INSULATION   | Headliner - Was 6664161 [A]  |                   | 1    |
| 12     | 6806131 | WINDOW       | Curved - Was 6664176 [A]   |                   | 1    |
| 13     | 6664172 | WINDOW       | Rear - Seal use Ref. OPERATOR CAB(52)  |                   | 1    |
| 14     | 6664175 | GLASS        | Lower front - W/Mtg Holes & Notch  | 20001 - xxxxx     | 1    |
| 15     | 6664171 | GLASS        | Left   |                   | 1    |
| 16     | NAP     | SEAL         | 105' long (2680mm) Order Ref.OPERATOR CAB(49)  |                   | 1    |
| 17     | 6628900 | ROD          | Door release - Was 6664137 [A]   |                   | 1    |
| 18     | 6628902 | PLATE        | Was 6664134 [A]  |                   | 3    |
| 19     | 6664146 | SEAL         |  |                   | 1    |
| 20     | 6628901 | LATCH        | Door hold openAWas 6664135 [A]   |                   | 1    |
| 21     | 6664085 | BUSHING      |  |                   | 8    |
| 22     | 6660979 | NUT          | Push on  |                   | 1    |
| 23     | 6660980 | RETAINER     | Push on  |                   | 1    |
| 24     | 6654147 | SPRING       |  |                   | 1    |
| 25     | 6664068 | BOLT         | 1 1/4' long  |                   | 4    |
| 26     | 6664056 | NUT          | Acorn 1/4'   |                   | 4    |
| 27     | 6648410 | BOLT         | 3/4'   |                   | 12   |
| 28     | 6664090 | WASHER       |  |                   | 4    |
| 29     | 6800788 | GROMMET      | Was 6664087 [A]  |                   | 4    |
| 30     | 6664086 | SPACER       |  |                   | 4    |
| 31     | 6664089 | GROMMET      |  |                   | 4    |
| 32     | 6664065 | WASHER       |  |                   | 4    |
| 33     | 6664056 | NUT          | Acorn 1/4'   |                   | 4    |
| 34     | NAP     | SEAL         | 36' (914mm) long - Order Ref.OPERATOR CAB(50)  |                   | 1    |
| 35     | NAP     | SEAL         | 12' (305mm) long - Order Ref.OPERATOR CAB(50)  |                   | 2    |
| 36     | 6664559 | FASTENER     | Insulation   |                   | 4    |
| 37     | 6664080 | PIN          | Door striker - w/internal threads  |                   | 1    |
| 37     | 6649483 | PIN          | Door striker - w/external threads  | - Was 6654170 [A] | x    |
| 38     | 6664083 | COVER        |  |                   | 1    |
| 39     | 27E-6   | WASHER       | Was 25E-17 [D]   |                   | 1    |
| 40     | 61D-7   | NUT          | Used w/Ref.OPERATOR CAB(37) w/external threads - Was 61D-6 [D]   |                   | 1    |
| 40     | 6664046 | BOLT         | Used w/Ref.OPERATOR CAB(37) w/internal threads   |                   | 1    |
| 41     | 6664562 | GROMMET      |  |                   | 4    |
| 42     | 6660975 | GROMMET      |  |                   | 1    |
| 43     | NAP     | SEAL         | 33" (838mm) - Order Ref. OPERATOR CAB(51) - See Note   |                   | 1    |
| 44     | 6657095 | BOLT         | 1/2'   |                   | 11   |
| 45     |         | DOOR ASSY.   | See page OPERATOR CAB(1)   |                   | 1    |
| 46     |         | WINDOW ASSY. | Right side - see page OPERATOR CAB(1)  |                   | 1    |
| 47     |         | HEATER ASSY. | See page HEATER(1)   |                   | 1    |

## OPERATOR CAB

| Ref.N° | Part N°   | Description | Remarks  | Serial N°    | Qty. |
|--------|-----------|-------------|--|--------------|------|
| 48     | NAP       | LIGHT       | Order 6668722 -Was 6664106 [A]                               |              | 2    |
| 48     | 6665700   | SEALED BEAM | for light 6664106  |              | 2    |
| 48     | 6664106   | LIGHT       | Was 6668722[A]   |              | 2    |
| 48     | 6668721   | BULB        | Replacement bulb for 6668722                                 |              | 2    |
| 49     | 6664088   | SEAL        | Bulk - Order Per Foot  |              | x    |
| 50     | 6648416   | SEAL        | Bulk - Order Per Foot  |              | x    |
| 51     | 6664102   | SEAL        | Bulk - Order Per Foot  |              | x    |
| 52     | 6654148   | SEALANT     | Window Rear - 10 oz. tube                                    |              | 1    |
| 53     | 6654152   | SCREW       | #10 x 3/4' long  |              | 7    |
| 54     | 6665386   | SCREW       | #10 x 1-3/4' long  |              | 3    |
| 55     | 6665366   | RETAINER    | Glass  |              | 8    |
| 56     | 6668111   | WINDOW      | Lower Front -No Hole-No Notch                                | xxxx & Above | 1    |
| 56     | 6800637   | WINDOW      | Lower Front - Used with replace- ment Cab Assy. 6801478 only |              | 1    |
| 57     | 6664103   | NUT         | Acorn - #10 - Was 12D-10 [B]                                 |              | 4    |
| 58     | 58G-806   | SCREW       |  |              | 2    |
| 59     | 6664075   | ASH TRAY    |  |              | 1    |
| 60     | 6630038   | WASHER      | See Note   |              | 4    |
| 61     | 6664066   | BOLT        | 2" (51mm) Long - See Note                                    |              | 2    |
| 62     | 6670760   | GRIP        | See Note   |              | 2    |
| 63     | 6670761   | CAP         | Hole Plug - See Note   |              | 1    |
| 64     | 6800651   | MOUNT       | Lower Glass - See Note                                       |              | 2    |
| 65     | 6801032   | HANDLE      | L.H. Shown - See Note  |              | 1    |
| 65     | 6801033   | LATCH       | R.H. not shown - See Note                                    |              | 1    |
| 66     | 6657095   | BOLT        | #10 x 1/2" - Early cabs only                                 |              | 4    |
| 66     | 6801188   | SCREW       | #10 x 1"- Used with replacement Cab 6801478 Only - See Note  |              | 2    |
| 67     | 6800857   | BOLT        | See Note   |              | 2    |
| 68     | 87D-5     | NUT         | See Note   |              | 2    |
| 69     | NAP       | SEAL        | 56" (1422mm) long - Order Ref. OPERATOR CAB(49) - See Note   |              | 1    |
| 70     | 26GM-6016 | BOLT        |  |              | 3    |
| 71     | 6805291   | BRACKET     |  |              | 1    |



# OPERATOR CAB (Front Window)

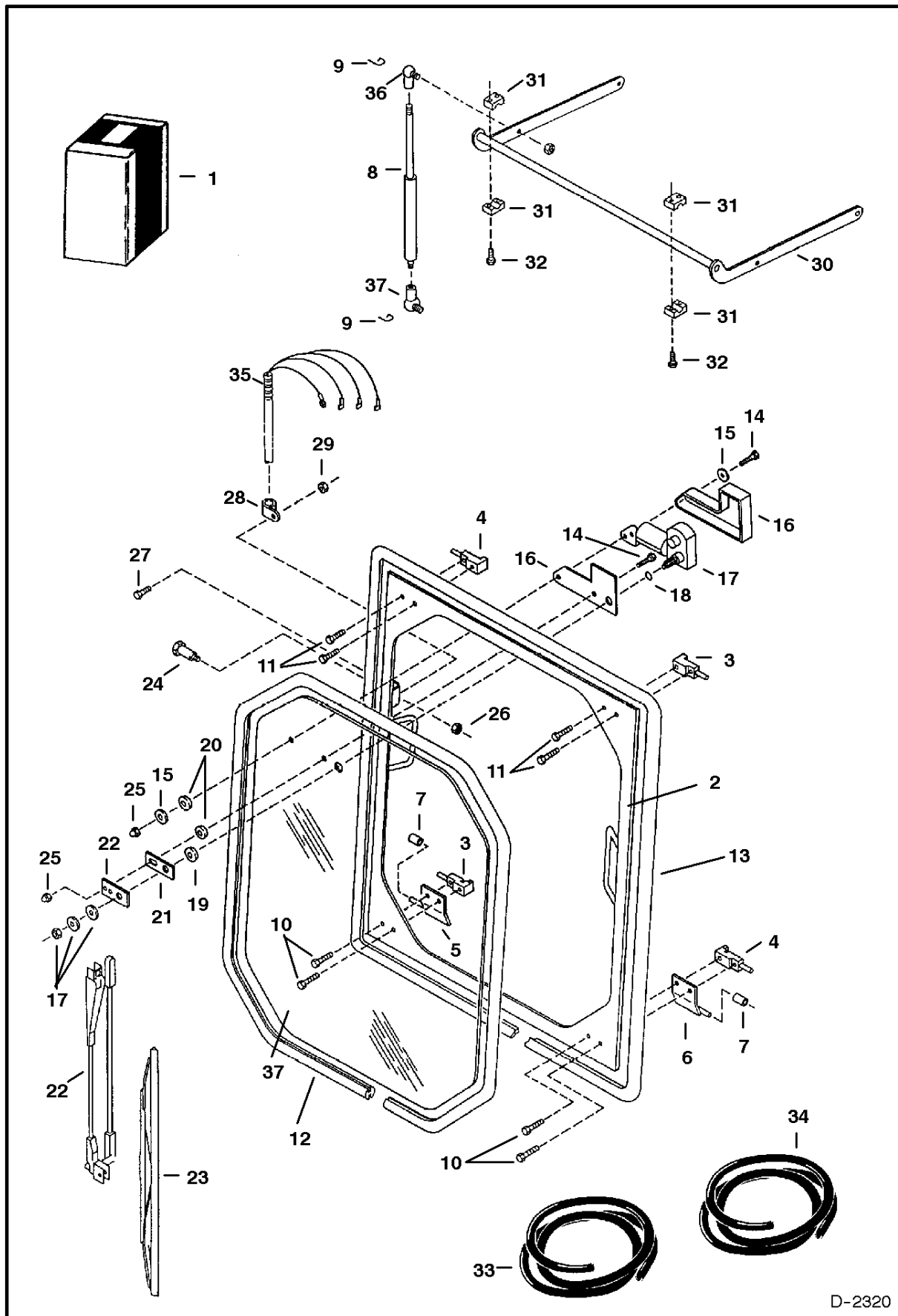


D-2251

## OPERATOR CAB

| Ref.N° | Part N° | Description | Remarks  | Serial N° | Qty. |
|--------|---------|-------------|--|-----------|------|
| 1      | NAP     | WINDOW      | assy. front - W/Ref. OPERATOR CAB(2)-OPERATOR CAB(29) - See BTI E-042- Order 6667155 - See Page OPERATOR CAB(1) - Was 666415 |           | 1    |
| 2      | NAP     | GLASS       | Front - See BTI E-042 - Order 6667155 - See Page OPERATOR CAB(1) - Was 6664174 [A]   |           | 1    |
| 3      | 6664158 | LATCH       | window   |           | 2    |
| 4      | 6664157 | LATCH       | window   |           | 2    |
| 5      | 6664109 | HANDLE      | front window   |           | 2    |
| 6      | 6664094 | WIPER MOTOR | 2 speed  |           | 1    |
| 6      | 6668137 | MOTOR       | Single Speed   |           | 1    |
| 7      | 6664098 | O-RING      | wiper motor shaft  |           | 2    |
| 8      | 6664178 | GASKET      |  |           | 1    |
| 9      | 6664095 | ARM         | wiper - W/Pivot Mount  |           | 1    |
| 10     | 6664096 | BLADE       | wiper  |           | 1    |
| 11     | 6664151 | HINGE       | front window   |           | 2    |
| 12     | 6664177 | COVER       | wiper - motor  |           | 1    |
| 13     | 6664159 | SPACER      | Latch - Plastic - 1/4" (8mm) Thick - Early Style   |           | 4    |
| 13     | 6668119 | SPACER      | Latch - Rubber - 1/8" (4mm) Thick - Later style  |           | 4    |
| 14     | 6664087 | GROMMET     | .813 mounting hole   |           | 8    |
| 15     | 6664089 | GROMMET     | .406 mounting hole   |           | 10   |
| 16     | 6664090 | WASHER      | 1' O.D.  |           | 20   |
| 17     | 6664065 | WASHER      | 11/16' O.D.  |           | 16   |
| 18     | 6664064 | BOLT        | 7/8' long - Used W/Ref. OPERATOR CAB(23) or OPERATOR CAB(24) & 1/4"(8mm) Thick Spacer - Ref. OPERATOR CAB(13)                |           | 4    |
| 18     | 6668410 | BOLT        | 3/4" Long -Used W/Ref. OPERATOR CAB(38) or OPERATOR CAB(39) & 1/8" (4mm) Thick Spacer - Ref.OPERATOR CAB(13)                 |           | 1    |
| 19     | 6664068 | BOLT        | 1 1/4 ' long   |           | 8    |
| 20     | 6664056 | NUT         | acorn 1/4'   |           | 8    |
| 21     | 6664086 | SPACER      |  |           | 8    |
| 22     | NAP     | SEAL        | 136'(3455mm) long - Order Ref. OPERATOR CAB(37)  |           | 1    |
| 23     | 6664153 | GUIDE PIN   | R.H. - Straight Body - Early Style   |           | 1    |
| 24     | 6664154 | GUIDE PIN   | L.H. - Straight Body - Early Style   |           | 1    |
| 25     | 6664067 | BOLT        | 1' long  |           | 4    |
| 26     | 6664565 | BOLT        | 7/8' long  |           | 1    |
| 27     | 6664566 | SCREW       | 3/4' long  |           | 1    |
| 28     | 6664103 | NUT         | acorn #10  |           | 2    |
| 29     | 6669142 | HARNESS     | Wiper , Motor - Was NAP  |           | 1    |
| 29     | 6669141 | HARNESS     | Cab - Was 6664162 [A]rcm3A; }H~10[M  |           | x    |
| 30     | 6664148 | LINKAGE     | window pivot   |           | 1    |
| 31     | 6664074 | CYLINDER    | gas spring   |           | 2    |
| 32     | 6649244 | BALL STUD   | cylinder - Was 6664072 [A]   |           | 4    |
| 33     | 6649245 | CLIP        | ball joint retainer - Incl. W/Ref.OPERATOR CAB(31) - Was 6664073 [A]   |           | 4    |
| 34     | 6664560 | BLOCK       | linkage mount  |           | 2    |
| 35     | 6664059 | BOLT        |  |           | 4    |
| 36     | 6648364 | NUT         |  |           | 2    |
| 37     | 6664088 | SEAL        | bulk - Order Per Foot  |           | x    |
| 38     | 6628879 | GUIDE PIN   | R.H. - Bent Body - Later Style - Was 6667190 [A]   |           | 1    |
| 39     | 6628880 | GUIDE PIN   | L.H. - Bent Body - Later Style - Was 6667191 [A]   |           | 1    |
| 40     | 30H-18  | CLAMP       | Wire Harness   |           | 2    |

# OPERATOR CAB (Front Window)

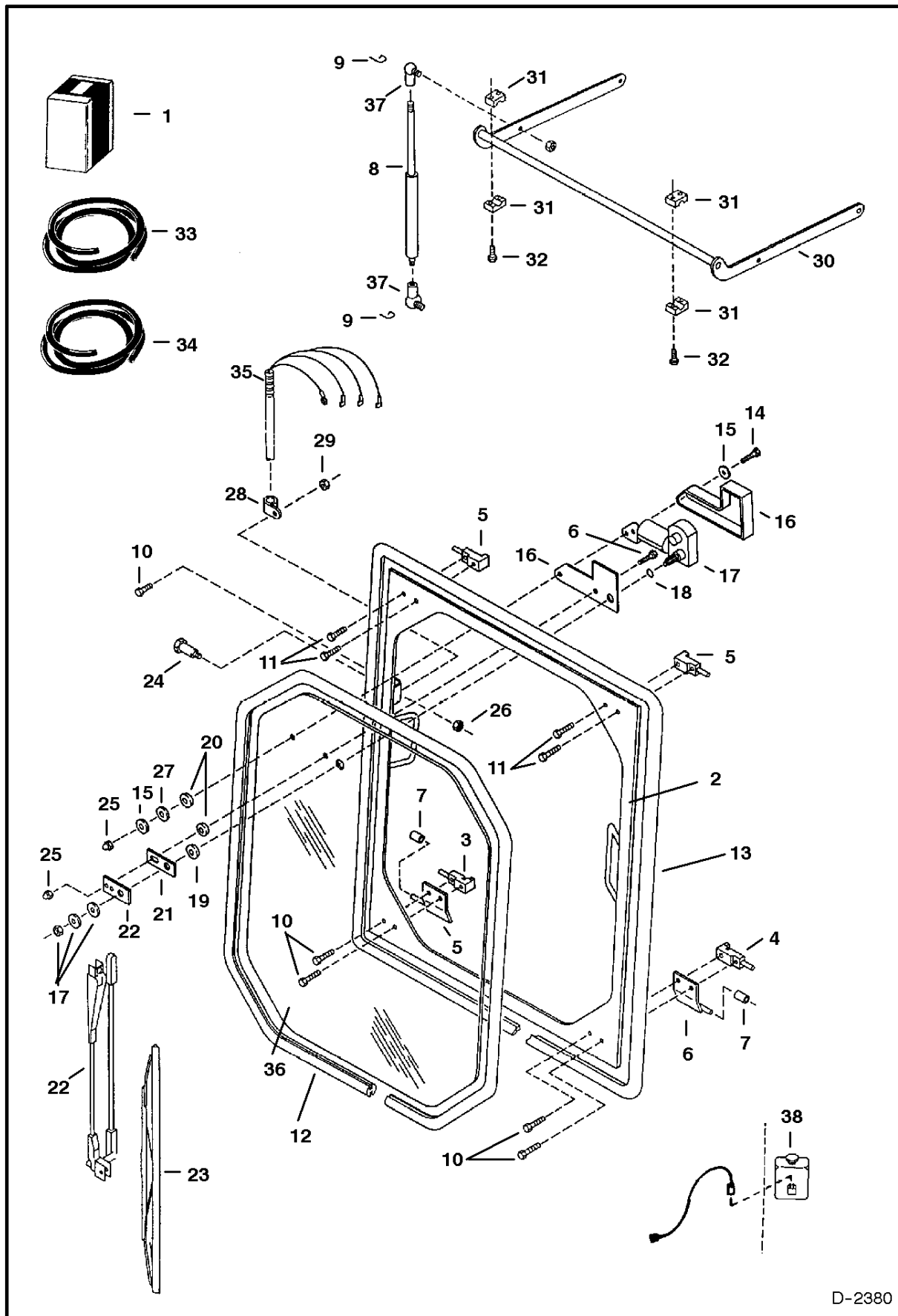


D-2320

## OPERATOR CAB

| Ref.N° | Part N° | Description  | Remarks  | Serial N° | Qty. |
|--------|---------|--------------|--|-----------|------|
| 1      | NAP     | WINDOW ASSY  | Incl. Refs. OPERATOR CAB(1)-OPERATOR CAB(6), OPERATOR CAB(10)-OPERATOR CAB(17), OPERATOR CAB(19)-OPERATOR CAB(23), OPERATOR CAB( |           | 1    |
| 1      | 6667155 | WINDOW ASSY# | Incl. Refs. OPERATOR CAB(2)-OPERATOR CAB(15), OPERATOR CAB(19), OPERATOR CAB(20), OPERATOR CAB(23)-OPERATOR CAB(29) & OPERATOR C |           | 1    |
| 2      | 6628875 | FRAME        | Was 6667194 [A]  |           | 1    |
| 3      | 6628883 | LATCH        | Was 6667192 [A]  |           | 2    |
| 3      | 6628889 | HANDLE       |  |           | 2    |
| 4      | 6628884 | LATCH        | Was 6667193 [A]  |           | 2    |
| 4      | 6628889 | HANDLE       |  |           | 2    |
| 5      | 6628879 | GUIDE PIN    | Was 6667190 [A]  |           | 1    |
| 6      | 6628880 | GUIDE PIN    | Was 6667191 [A]  |           | 1    |
| 7      | 6667202 | ROLLER       |  |           | 1    |
| 8      | 6667199 | GAS SPRING   |  |           | 1    |
| 9      | 6649245 | CLIP         | Ball Joint Retainer - Was 6664073 [A]  |           | 2    |
| 10     | 6667197 | BOLT         | 3/4' long  |           | 4    |
| 11     | 6667196 | BOLT         | 5/8' long  |           | 4    |
| 12     | NAP     | SEAL         | 119' (3018mm) long - Order Ref. OPERATOR CAB(33)   |           | 1    |
| 13     | NAP     | SEAL         | 135' (3429mm) long - Order Ref. OPERATOR CAB(34)   |           | 1    |
| 14     | 6664566 | SCREW        |  |           | 2    |
| 15     | 6664065 | WASHER       |  |           | 2    |
| 16     | 6664177 | COVER        | Wiper Motor  |           | 1    |
| 17     | 6664094 | WIPER MOTOR  | 2 Speed  |           | 1    |
| 17     | 6668137 | MOTOR        | Single Speed   |           | 1    |
| 18     | 6664098 | O-RING       | Wiper Motor Shaft  |           | 1    |
| 19     | 6667201 | SPACER       |  |           | 1    |
| 20     | 6664085 | BUSHING      |  |           | 2    |
| 21     | 6664178 | GASKET       | Was 6667200 [A]  |           | 1    |
| 22     | 6664095 | ARM          | Wiper - W/Pivot Mount  |           | 1    |
| 23     | 6664096 | BLADE        | Wiper  |           | 1    |
| 24     | 6800857 | BOLT         | Was 6664108 [A]  |           | 2    |
| 25     | 6664103 | NUT          |  |           | 2    |
| 26     | 6648364 | NUT          |  |           | 2    |
| 27     | 6667198 | BOLT         |  |           | 1    |
| 28     | 30H-21  | CLAMP        | Was 30H-18 [A]   |           | 1    |
| 29     | 6664056 | NUT          |  |           | 1    |
| 30     | 6803154 | LINKAGE      | Was 6628891 [A]  |           | 1    |
| 31     | 6664560 | BLOCK        | Linkage Mount  |           | 2    |
| 32     | 6664059 | BOLT         |  |           | 4    |
| 33     | 6648405 | SEAL         | Bulk - Sold Per Foot   |           | x    |
| 34     | 6664088 | SEAL         | Bulk - Sold Per Foot   |           | x    |
| 35     | 6669142 | HARNESS      | Wiper Motor - Single speed   |           | 1    |
| 35     | NAP     | HARNESS      | wiper motor - two speed  |           | 1    |
| 35     | 6669141 | HARNESS      | Cab - Was 6664162 [A]  |           | 1    |
| 36     | 6649244 | BALL STUD    | Cylinder - Was 6664072 [A]   |           | 2    |
| 37     | 6667195 | GLASS        |  |           | 1    |

# OPERATOR CAB (Front Window)

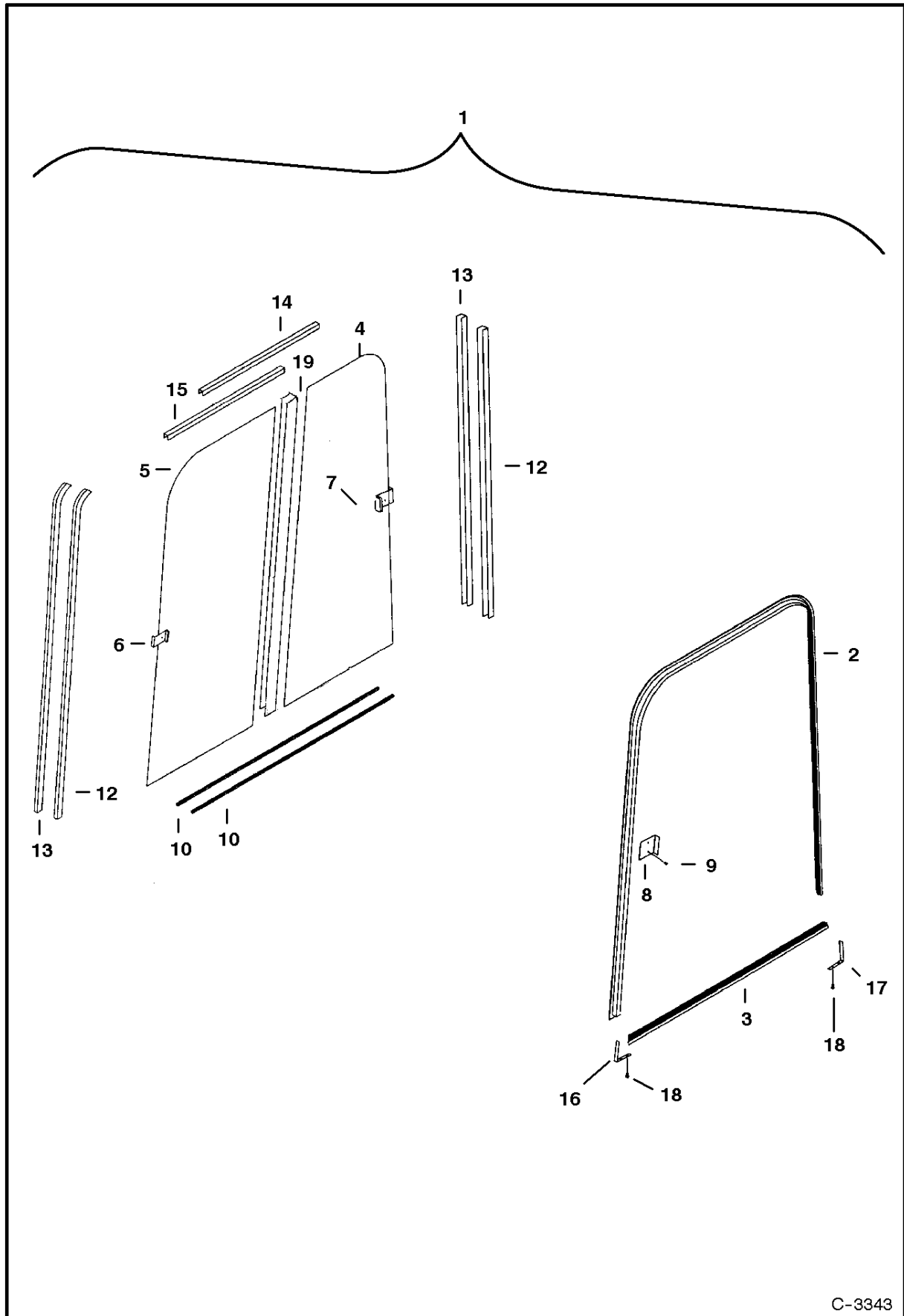


D-2380

## OPERATOR CAB

| Ref.N° | Part N° | Description | Remarks   | Serial N° | Qty. |
|--------|---------|-------------|---|-----------|------|
| 1      | 6800880 | WINDOW ASSY | Incl. Refs. 1-6, 10-17, 19-23, 25, 27-29 & 35ocom33.<br>}H~10{M |           | x    |
| 2      | 6800876 | FRAME       |   |           | 1    |
| 3      | 6801502 | LATCH       | R.H.  |           | 1    |
| 3      | 6628889 | HANDLE      |   |           | 1    |
| 4      | 6801503 | LATCH       | L.H.  |           | 1    |
| 4      | 6628889 | HANDLE      |   |           | 1    |
| 5      | 6801420 | CHANNEL     |   |           | 2    |
| 6      | 6801188 | SCREW       |   |           | 1    |
| 7      | 6800873 | ROLLER      |   |           | 1    |
| 8      | 6667199 | GAS SPRING  |   |           | 1    |
| 9      | 6649245 | CLIP        | Ball Joint Retainer   |           | 2    |
| 10     | 6667196 | BOLT        | 5/8' long   |           | 5    |
| 11     | 6630207 | RIVET       |   |           | 4    |
| 12     | NAP     | SEAL        | 119' (3018mm) long - Order Ref. OPERATOR CAB(33)                |           | 1    |
| 13     | NAP     | SEAL        | 180' (4572mm) long - Order Ref. OPERATOR CAB(34)                |           | 1    |
| 14     | 6664566 | SCREW       |   |           | 2    |
| 15     | 6664065 | WASHER      |   |           | 2    |
| 16     | 6664177 | COVER       | Wiper Motor   |           | 1    |
| 17     | 6668137 | MOTOR       | Single speed  |           | 1    |
| 18     | 6664098 | O-RING      | Wiper Motor Shaft   |           | 1    |
| 19     | 6667201 | SPACER      |   |           | 1    |
| 20     | 6664085 | BUSHING     |   |           | 2    |
| 21     | 6664178 | GASKET      |   |           | 1    |
| 22     | 6664095 | ARM         | Wiper - W/Pivot Mount   |           | 1    |
| 23     | 6664096 | BLADE       | Wiper   |           | 1    |
| 24     | 6800857 | BOLT        |   |           | 2    |
| 25     | 6664103 | NUT         |   |           | 2    |
| 26     | 6648364 | NUT         |   |           | 2    |
| 27     | 6801059 | WASHER      |   |           | 1    |
| 28     | 30H-21  | CLAMP       |   |           | 1    |
| 29     | 6669138 | NUT         |   |           | 1    |
| 30     | 6803154 | LINKAGE     | Was 6628891 [A]   |           | 1    |
| 31     | 6664560 | BLOCK       | Linkage Mount   |           | 2    |
| 32     | 6664059 | BOLT        |   |           | 4    |
| 33     | 6514301 | SEAL        | Bulk - Sold Per Foot  |           | x    |
| 34     | 6670759 | SEAL        | Bulk - Sold Per Foot  |           | x    |
| 35     | 6669142 | HARNESS     | Wiper   |           | 1    |
| 35     | 6669141 | HARNESS     | Cab   |           | 1    |
| 36     | 6667195 | GLASS       |   |           | 1    |
| 37     | 6649244 | BALL STUD   |   |           | 2    |
| 38     | 6664438 | WASHER      | Assy.   |           | 1    |
| 38     | 6664554 | PUMP        |   |           | 1    |
| 38     | NAP     | TANK        | Order Ref. OPERATOR CAB(38)                                     |           | 1    |
| 38     | 6664555 | NOZZLE      | Window washer   |           | 1    |
| 38     | 6664556 | HOSE        |   |           | 1    |

OPERATOR CAB  
(Right Hand Window)



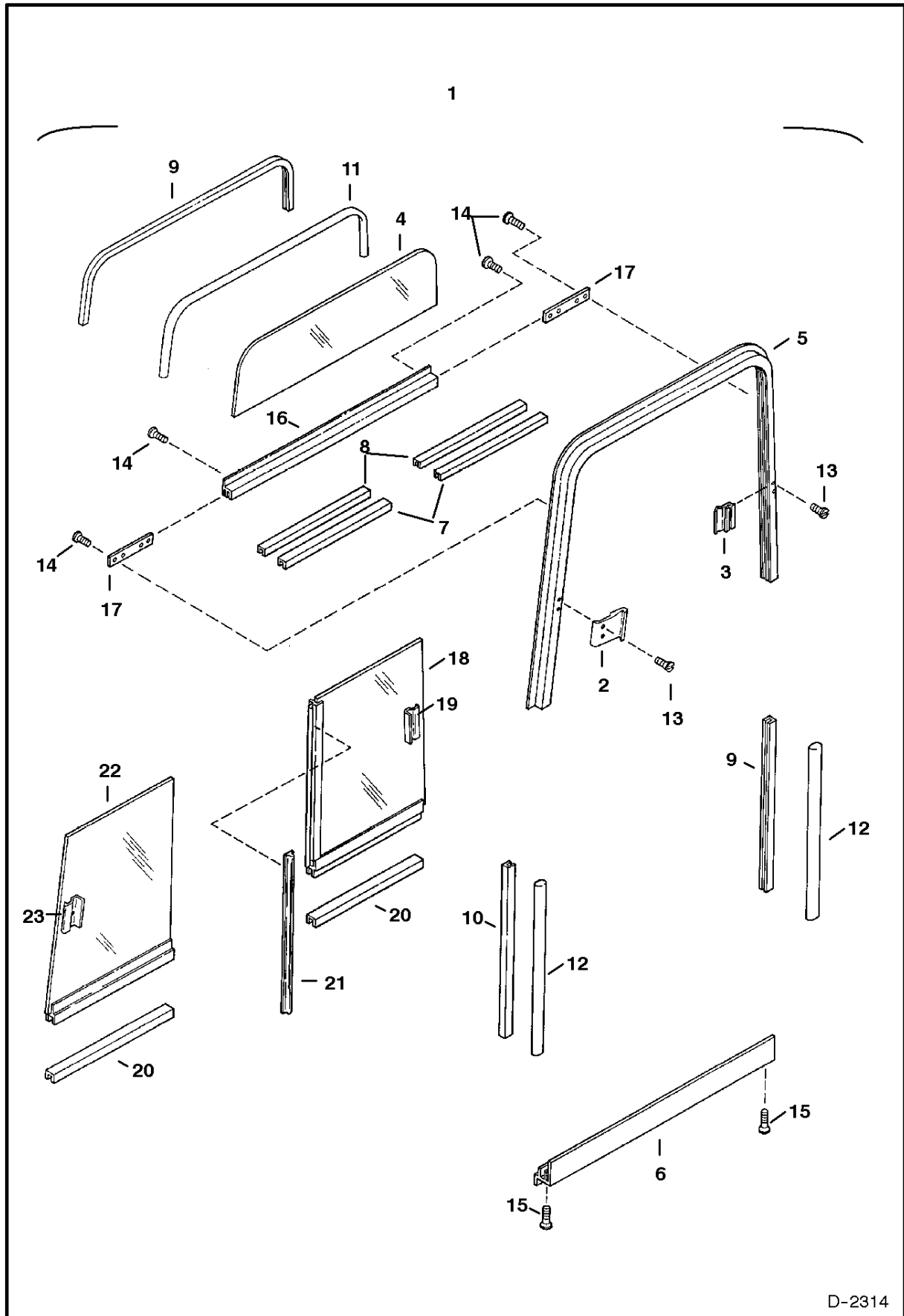
C-3343

## OPERATOR CAB

| Ref.N° | Part N° | Description  | Remarks  | Serial N° | Qty. |
|--------|---------|--------------|--|-----------|------|
| 1      | NAP     | WINDOW ASSY. | sliding - W/Refs. OPERATOR CAB(2) & OPERATOR CAB(18) - Order 6667616 - Was 6664173 [A] |           | 1    |
| 2      | 6664865 | FRAME        | top  |           | 1    |
| 3      | 6664866 | FRAME        | bottom   |           | 1    |
| 4      | 6664863 | GLASS        | rear side  |           | 1    |
| 5      | 6664864 | GLASS        | front side   |           | 1    |
| 6      | 6665026 | LATCH ASSY   | front - incl. mtg. hardware  |           | 1    |
| 7      | 6665027 | LATCH        | rear - incl. mtg. hardware   |           | 1    |
| 8      | 6664862 | RETAINER     | latch  |           | 1    |
| 9      | NAP     | SCREW        | Was 6664875 [A]  |           | 2    |
| 10     | 6664872 | CHANNEL      | front inner  |           | 1    |
| 11     | 6664868 | CHANNEL      | window stop  |           | 1    |
| 12     | 6664867 | CHANNEL      | rear inner   |           | 1    |
| 13     | 6664871 | CHANNEL      | rear outer   |           | 1    |
| 14     | 6664869 | CHANNEL      | top outer  |           | 1    |
| 15     | 6664870 | CHANNEL      | top inner  |           | 1    |
| 16     | 6664860 | BRACKET      | front corner   |           | 1    |
| 17     | 6664861 | BRACKET      | rear corner  |           | 1    |
| 18     | 6664876 | SCREW        |  |           | 4    |
| 19     | NAP     | SUPPORT      | window - W/Ref. OPERATOR CAB(5)- Was 6665914[A]  |           | 1    |



**WINDOW ASSY  
(R. H. Slide Window)**

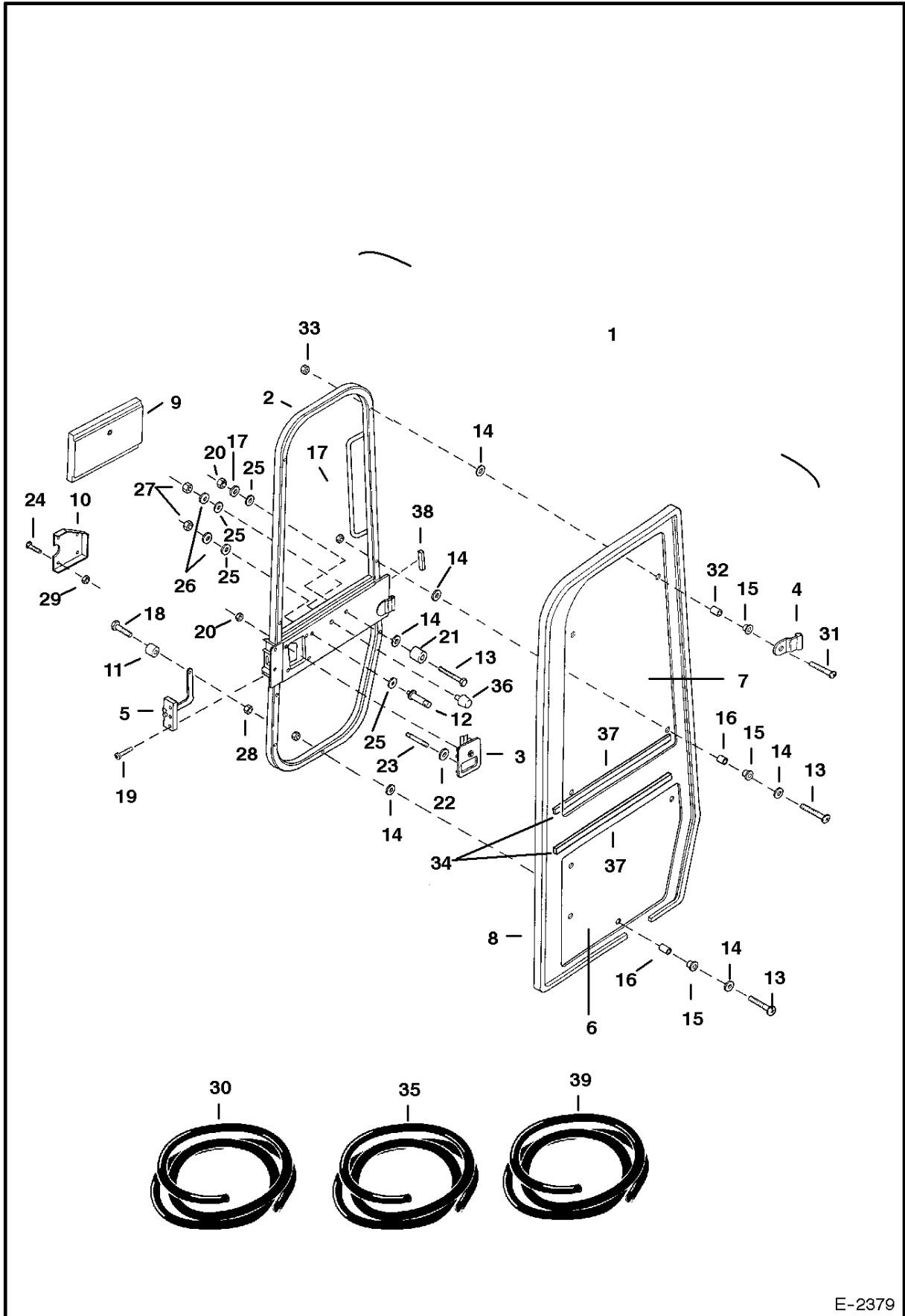


D-2314

# WINDOW ASSY

| Ref.N° | Part N° | Description | Remarks                               | Serial N° | Qty. |
|--------|---------|-------------|---------------------------------------|-----------|------|
| 1      | 6667616 | WINDOW ASSY | R.H. - W/Refs. 2-24                   |           | 1    |
| 2      | 6667593 | LATCH       |                                       |           | 1    |
| 3      | 6667594 | LATCH       |                                       |           | 1    |
| 4      | 6667595 | GLASS       | upper                                 |           | 1    |
| 5      | 6667596 | FRAME       |                                       |           | 1    |
| 6      | 6667597 | FRAME       |                                       |           | 1    |
| 7      | 6667598 | CHANNEL     | 20' (508mm) long                      |           | 2    |
| 8      | 6667599 | CHANNEL     | 18' (457mm) long                      |           | 2    |
| 9      | 6667600 | CHANNEL     | 28.5' (724mm) long                    |           | 2    |
| 10     | 6667601 | CHANNEL     | 28.5' (724mm) long                    |           | 1    |
| 11     | 6667602 | TRIM        | rubber - 47' (1194mm) long            |           | 1    |
| 12     | 6667603 | TRIM        | rubber - 32.5' (826mm) long           |           | 2    |
| 13     | 6667604 | SCREW       |                                       |           | 4    |
| 14     | 6667605 | SCREW       |                                       |           | 4    |
| 15     | 6664876 | SCREW       | Was 6667606[A]                        |           | 2    |
| 16     | 6667607 | FRAME       | W/Ref. 17                             |           | 1    |
| 17     | 6667608 | BRACKET     |                                       |           | 2    |
| 18     | 6667609 | GLASS ASSY  | W/Ref. 19-21                          |           | 1    |
| 19     | 6667610 | LATCH ASSY  | W/Mounting Hardware                   |           | 1    |
| 20     | 6667612 | CHANNEL     | 20' (508mm) long - Was 6667615 [A]    |           | 1    |
| 21     | 6667611 | SEAL        | 28.5' (724mm) long                    |           | 1    |
| 22     | 6667613 | GLASS ASSY  | W/Ref. 22 & 23                        |           | 1    |
| 23     | 6665026 | LATCH ASSY  | W/Mounting Hardware - Was 6667614 [A] |           | 1    |

# OPERATOR CAB (Door)

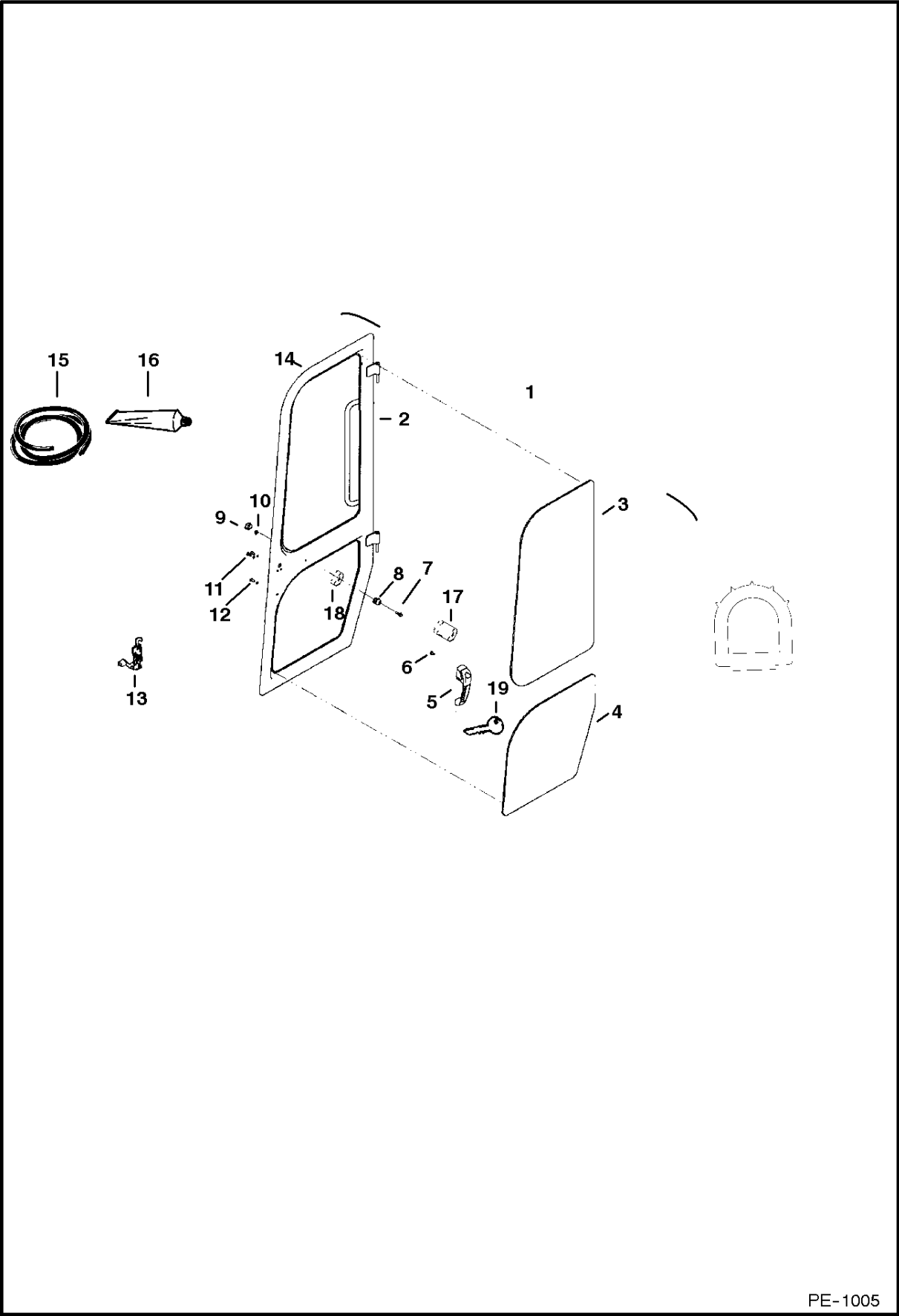


E-2379

## OPERATOR CAB

| Ref.N° | Part N°   | Description | Remarks  | Serial N° | Qty. |
|--------|-----------|-------------|--|-----------|------|
| 1      | NAP       | DOOR ASSY.  | W/Ref. OPERATOR CAB(2)-OPERATOR CAB(22) - Order 6805226 - See BTI E-061 - Was 6628863[A] |           | 1    |
| 2      | NAP       | DOOR        | Weldment - See BTI E-058 - Was 6628864[A]  |           | 1    |
| 3      | 6661631   | LATCH       | Outside  |           | 1    |
| 3      | 6587458   | KEY SET     |  |           | 1    |
| 4      | 6628872   | HINGE       | Top  |           | 1    |
| 5      | 6664572   | LATCH       | Inside - with handle   |           | 1    |
| 6      | 6664573   | GLASS       | Bottom   |           | 1    |
| 7      | 6664574   | GLASS       | Top  |           | 1    |
| 8      | NAP       | SEAL        | 162' (4115mm) long - Order Ref. OPERATOR CAB(31)   |           | 1    |
| 9      | 6667841   | INSULATION  |  |           | 1    |
| 10     | 6664576   | COVER       | Door latch   |           | 1    |
| 11     | 6664092   | KNOB        | Door latch   |           | 1    |
| 12     | NAP       | RETAINER    | Door Hold Open -See BTI E-058  |           | 1    |
| 13     | 6800844   | RETAINER    | Door Hold Open   |           | 1    |
| 14     | 6664066   | BOLT        | 2'(51mm) long  |           | 8    |
| 15     | 6664090   | WASHER      | 1'(25mm) O.D.  |           | 16   |
| 16     | 6800788   | GROMMET     |  |           | 8    |
| 17     | 6664086   | SPACER      | 3/8' (9,5mm) long  |           | 8    |
| 18     | 6664056   | NUT         | Acorn 1/4'   |           | 7    |
| 18     | 6667837   | NUT         | Hex 1/4" com34. }H~10{M  |           | x    |
| 19     | 85G-1010  | SCREW       |  |           | 7    |
| 20     | 6648410   | BOLT        |  |           | 4    |
| 21     | 85D-4     | NUT         |  |           | 4    |
| 22     | 6664569   | BUMPER      | See BTI E-058  |           | 1    |
| 23     | 61D-6     | NUT         |  |           | 1    |
| 24     | 38C-816   | BOLT        | Striker  |           | 1    |
| 25     | 6657095   | BOLT        |  |           | 4    |
| 25     | 6667839   | BOLT        | Self-Tapping - Used W/Ref. OPERATOR CAB(30)  |           | 4    |
| 25     | 26GM-6016 | BOLT        | Self-TappingAUsed when Ref. OPERATOR CAB(30) is not present - Was 6589675 [A]            |           | 4    |
| 26     | 6648397   | WASHER      |  |           | 2    |
| 27     | 4E-5      | WASHER      |  |           | 1    |
| 28     | 61D-5     | NUT         |  |           | 1    |
| 29     | 12D-10    | NUT         |  |           | 1    |
| 30     | 6664570   | NUT         | Clip - early machines only   |           | 4    |
| 31     | 6664088   | SEAL        | Bulk - Sold Per Foot   |           | x    |
| 32     | 6667842   | BOLT        | 2-1/4' (957mm) long  |           | 1    |
| 33     | 6667840   | SPACER      | 3/8' (9,5mm) long  |           | 1    |
| 34     | 6667843   | NUT         | 5/16'  |           | 1    |
| 35     | NAP       | SEAL        | 48' (1219mm) long - Order Ref. OPERATOR CAB(36)  |           | 2    |
| 36     | 6654162   | SEAL        | Bulk - Sold Per Foot   |           | x    |
| 37     | 6649040   | BUMPER      | See E-058  |           | 1    |
| 38     | NSS       | FOAM        | Window - Order 26" - Ref. OPERATOR CAB(40)   |           | 2    |
| 39     | NSS       | FOAM        | Door - Order 6" - Ref. OPERATOR CAB(40)  |           | 1    |
| 40     | 6584202   | FOAM        | Bulk - Sold Per Foot   |           | x    |

**\* OPERATOR CAB  
DOOR**

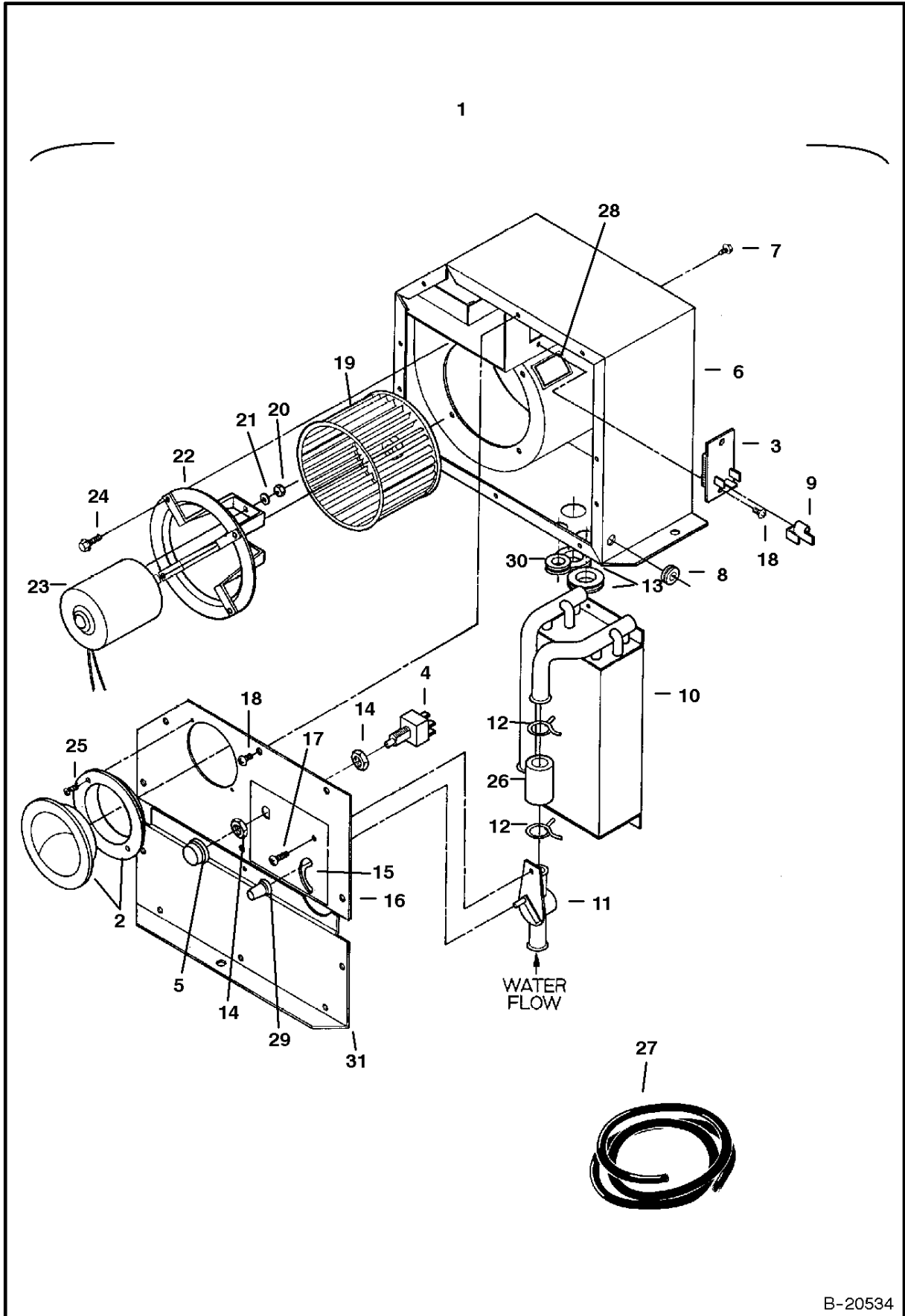


PE-1005

## \* OPERATOR CAB

| Ref.N° | Part N° | Description | Remarks  | Serial N° | Qty. |
|--------|---------|-------------|--|-----------|------|
| 1      | NAP     | DOOR ASSY   | Ref. 2 - * OPERATOR CAB(14) - Order 6807882 & 6709527 Key - Was 6805226[A] |           | 1    |
| 1      | 6807782 | DOOR ASSY   | Ref. 2 - * OPERATOR CAB(14)  |           | 1    |
| 2      | 6805469 | DOOR        |  |           | 1    |
| 3      | 6805470 | GLASS       | Upper  |           | 1    |
| 4      | 6805471 | GLASS       | Lower  |           | 1    |
| 5      | 6675282 | HANDLE      | for NAP door assy  |           | 1    |
| 5      | 6674667 | HANDLE      | for 6807782 door assy  |           | 1    |
| 6      | 17C-408 | BOLT        |  |           | 1    |
| 7      | 17C-416 | BOLT        |  |           | 1    |
| 8      | 6675385 | PLUG        | hold-open  |           | 1    |
| 9      | 6648391 | PLUG        | hole   |           | 1    |
| 10     | 55D-4   | NUT         |  |           | 1    |
| 11     | 6803202 | SCREW       |  |           | 5    |
| 12     | 6EM-60  | WASHER      |  |           | 2    |
| 13     | 6674666 | LATCH       |  |           | 1    |
| 14     | NAP     | SEAL        | door - Order Ref. * OPERATOR CAB(15) - 158" (401, 3mm) long                |           | 1    |
| 15     | 6675410 | SEAL        | bulk   |           | x    |
| 16     | 6675462 | URETHANE    | 10.5 oz. tube, black   |           | x    |
| 17     | 6675386 | SOCKET      | hold open  |           | 1    |
| 18     | 6808446 | SPACER      |  |           | 1    |
| 19     | 6587458 | KEY SET     | for handle 6675282   |           | 1    |
| 19     | 6709527 | KEY         | for handle 6674667   |           | 1    |

# HEATER (With 3 Speed Fan Motor)



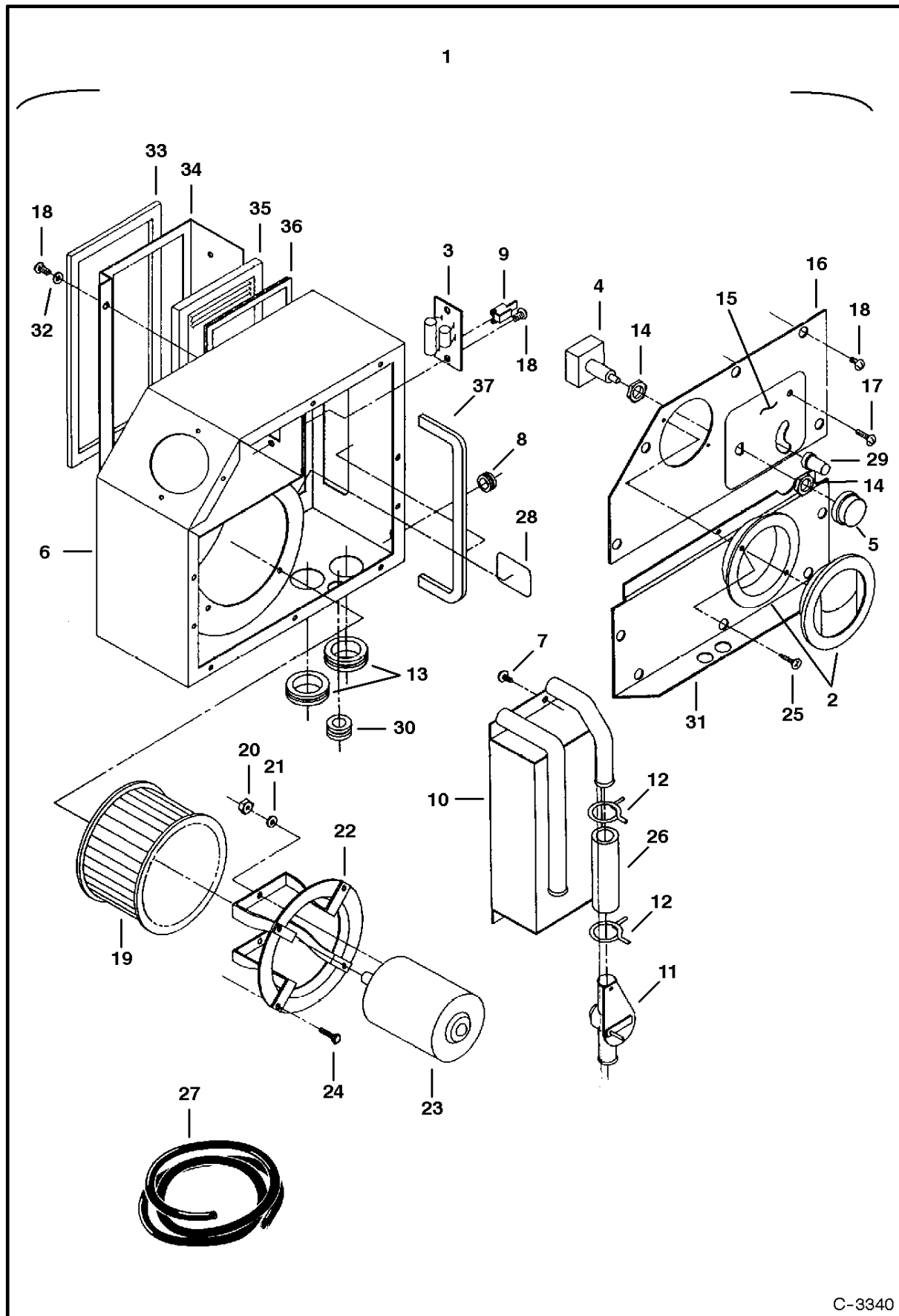
B-20534

## HEATER

| Ref.N° | Part N° | Description | Remarks                                      | Serial N° | Qty. |
|--------|---------|-------------|--|-----------|------|
| 1      | 6663968 | HEATER      | W/Ref. 2-HEATER(26) & HEATER(28) -HEATER(31) |           | 1    |
| 2      | 6664342 | LOUVER      |  |           | 2    |
| 3      | 6632584 | RESISTOR    |  |           | 1    |
| 4      | 6660659 | SWITCH      | fan  |           | 1    |
| 5      | 6660822 | KNOB        | fan switch                                   |           | 1    |
| 6      | 6664345 | HOUSING     | heater                                       |           | 1    |
| 7      | 6654195 | SCREW       |  |           | 4    |
| 8      | 6654196 | GROMMET     |  |           | 1    |
| 9      | 6660654 | CONNECTOR   |  |           | 1    |
| 10     | 6654790 | CORE        | heater                                       |           | 1    |
| 11     | 6654792 | VALVE       | water shut off                               |           | 1    |
| 12     | 6654192 | CLAMP       |  |           | 2    |
| 13     | 6641056 | GROMMET     |  |           | 2    |
| 14     | 6624435 | NUT         |  |           | 2    |
| 15     | 6664343 | DECAL       |  |           | 1    |
| 16     | 6664346 | COVER       | top  |           | 1    |
| 17     | 85G-808 | SCREW       |  |           | 1    |
| 18     | 6641066 | SCREW       |  |           | 11   |
| 19     | 6648468 | FAN         |  |           | 1    |
| 20     | 6641073 | NUT         |  |           | 1    |
| 21     | 6641072 | WASHER      |  |           | 1    |
| 22     | 6648467 | BRACKET     |  |           | 1    |
| 23     | 6660658 | MOTOR       | 12volt - 3 speed                             |           | 1    |
| 24     | 6640162 | BOLT        |  |           | 4    |
| 25     | 6662678 | SCREW       |  |           | 4    |
| 26     | NAP     | HOSE        | 4' (102mm) long - Order Ref. HEATER(27)      |           | 1    |
| 27     | 889269  | HOSE        | bulk - sold per foot                         |           | x    |
| 28     | 6660656 | DECAL       | wiring                                       |           | 1    |
| 29     | 6660881 | KNOB        | water valve                                  |           | 1    |
| 30     | 6664344 | GROMMET     |  |           | 1    |
| 31     | 6664347 | COVER       | bottom                                       |           | 1    |



# HEATER (With 3 Speed Fan & With Filter)



C-3340

**Thank you very much  
for your reading.**

**Please click here and go  
back to our website.**

**Then, you can download  
the complete manual  
instantly.**

**No waiting.**

**Have questions.**

**Please write to me.**

**All the problems will be answered  
within 12 hours.**

**[aservicemanuapdf@yahoo.com](mailto:aservicemanuapdf@yahoo.com)**