

325
328

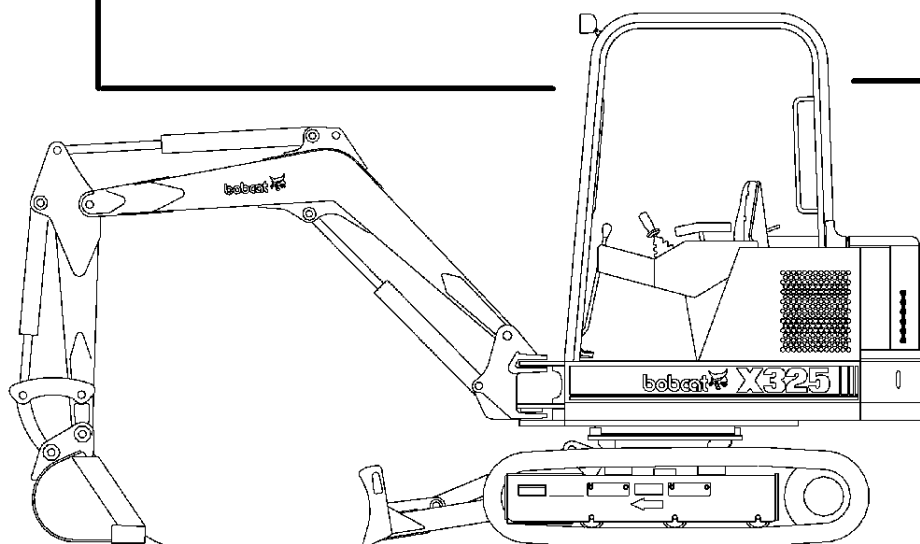


Bobcat®

D-Series

Parts Manual

325D (S/N 2323 11001 & Above)
328D (S/N 2324 11001 & Above)



Printed in U.S.A.

6901217 (10-00) Revised (4-02)

© Bobcat Company 2002

Our customer service email: aservicemanualpdf@yahoo.com

325/328 D-SERIES ALPHABETICAL INDEX

ADHESIVE	402
AIR CLEANER	266
ALTERNATOR	216
ANTI-FREEZE	402
AUGER	272, 288
BLOCK HEATER	306
BREAKER	348, 354
BREAKER MOUNT	296, 300
BREAKER MOUNTING KIT	302
CHARGE KIT, BREAKER	316, 318
CUTTER ASSY, LINE CUTTER ...	356
CYLINDER, SWING	200
FILTER, AIR	266
FILTER, ENG. OIL	234
FRONT IDLER	52, 54
GASKET KIT, ENGINE	262, 264
GLOW PLUG	260
HYD/HYDRO FLUID	402
IDLER, FRONT	52, 54
INJECTION NOZZLES	260
KIT, BREAKER MOUNTING	296, 300, 302
KIT, TANK HEATER	386, 388
LUBRICANT	402
MANIFOLD	252
OIL	402
PAINT	402
POLISH	402
PUMP, FUEL	256, 258
PUMP, INJECTION	256, 258
PUMP, OIL	236
PUMP, WATER	248
SEALANT	402
STARTER	214
SWING CYLINDER	200
SWIVEL JOINT	126
TANK HEATER	386, 388
THERMOSTAT	254
TRACK, STEEL	64

325/328 D-SERIES CONTENTS

MAIN FRAME	12-45
UPPERSTRUCTURE	12-15
INSULATION	16-17
UPPERSTRUCTURE LOCK	18-19
OPERATOR CAB	20-23
CAB	24-25
CANOPY	26-27
R.H. COVER	28-29
OPERATOR CAB (DOOR)	30-31
OPERATORS AREA & SEAT	32-33
SEAT	34-37
R.H. WINDOW	38-39
OPERATOR CAB (FRONT WINDOW)	40-41
TAILGATE	42-45
UNDERCARRIAGE	46-65
UNDERCARRIAGE	46-47
RECOIL SPRING	48-51
FRONT IDLER	52-55
TRACK ROLLER	56-63
TRACKS	64-65
WORK EQUIPMENT	66-83
ARM & BUCKET LINK	66-67
X-CHANGE	68-69
BOOM	70-71
SWING FRAME	72-73
BLADE	74-75
L.H. CONSOLE	76-79
R.H. CONSOLE	80-81
THROTTLE CONTROL	82-83
CONTROL CONSOLE	84-89
CONTROLS	84-89
HYDRAULIC CIRCUITRY	90-203
HYDRAULIC CIRCUITRY	90-113
MANIFOLD ASSY.	114-117
HYDRAULIC RESERVOIR	118-119
ISO/STD	120-121
SELECTOR VALVE ASSY	122-123
JOYSTICK/PILOT HYDRAULICS	124-125
SWIVEL JOINT	126-127
R.H. JOYSTICK (S/N 2323 12386 & BEL., 2324 12117 AND BEL. & 2324 12128-12129)	128-129
L.H. JOYSTICK (S/N 2323 12386 & BEL., 2324 12117 AND BEL. & 2324 12128-12129)	130-131
R.H. JOYSTICK (S/N 2323 12387 & ABV., 2324 12118-12127 & 12130 & ABV.)	132-133
L.H. JOYSTICK (S/N 2323 12387 & ABV., 2324 12118-12127 & 12130 & ABV.)	134-135
TRAVEL MOTOR	136-139
SWING MOTOR	140-141
MOUNT ASSY.	142-143
CROSSPORT RELIEF VALVE	144-145
CONTROL VALVE	146-149
VALVE SECTION	150-169
CONTROL VALVE (S/N & ABOVE)	170-171
VALVE SECTION	172-191
ARM CYLINDER	192-193
BLADE CYLINDER	194-195
BOOM CYLINDER	196-197
BUCKET CYLINDER	198-199
SWING CYLINDER	200-201
CLAMP CYLINDER	202-203
ELECTRICAL SYSTEMS	204-217
CAB ELECTRICAL	204-205
ELECTRICAL	206-213
STARTER	214-215
ALTERNATOR	216-217

325/328 D-SERIES CONTENTS

POWER UNIT	218-269
ENGINE & ATTACHING PARTS	218-225
ROCKER ARM COVER	226-227
VALVES & ROCKER ARM	228-229
CYLINDER HEAD	230-231
OIL PAN	232-233
GEARCASE	234-235
CRANKCASE	236-237
PISTON & CRANKSHAFT	238-239
CAMSHAFT	240-241
FUEL CAMSHAFT	242-243
GOVERNOR	244-245
SPEED CONTROL PLATE	246-247
WATER PUMP	248-249
ENGINE STOP LEVER	250-251
MANIFOLDS	252-253
WATER FLANGE & THERMOSTAT	254-255
INJECTION PUMP	256-259
INJECTION NOZZLES	260-261
UPPER GASKET KIT	262-263
LOWER GASKET KIT	264-265
AIR CLEANER	266-267
FUEL SYSTEM	268-269
ACCESSORIES & OPTIONS	270-404
AUGER	273-288
AUGER MOUNTING KIT	289-290
HYDRAULIC MOTOR	291-296
BREAKER MOUNTING KIT	297-304
BREAKER MOUNTING PACK	305-306
BLOCK HEATER	307-308
BUCKETS	309-310
CAB LIGHT KIT	311-312
CANOPY ENCLOSURE KIT	313-316
CHARGE KIT	317-320
CLAMP	321-322
COMPACTOR	323-324
COUNTERWEIGHT KIT	325-326
DECALS	327-330
DIRECT TO TANK KIT	331-332
GRAPPLE	333-334
HEATER BOX	335-338
HEATER INSTALLATION	339-340
HEATER KIT	341-344
HYDRA-TILT	345-346
HYDRA-TILT CYLINDER	347-348
HYDRAULIC BREAKER	349-362
HYDRAULIC BREAKER TOOLS	363-366
KEYLESS IGNITION KIT	367-368
LONG ARM KIT	369-370
MOTION ALARM KIT	371-372
POWERTILT	373-376
PURIFIER	377-378
SELECTOR VALVE ASSY	379-380
SPECIAL APPLICATIONS CAB	381-382
ACCESSORIES & OPTIONS	270-404
SPECIAL APPLICATIONS CANOPY KIT	383-384
STEEL TRACK KIT	385-386
TANK HEATER KIT	387-390
TOP GUARD KIT	391-392
VINYL CAB ENCLOSURE KIT	393-394
WIDE LINK KIT	395-396
X-CHANGE™	397-398
X-CHANGE™ BREAKER MOUNTING KIT	399-402
BULK ITEMS	403-404
NUMERICAL INDEX	405-458
NUMERICAL INDEX	405-458

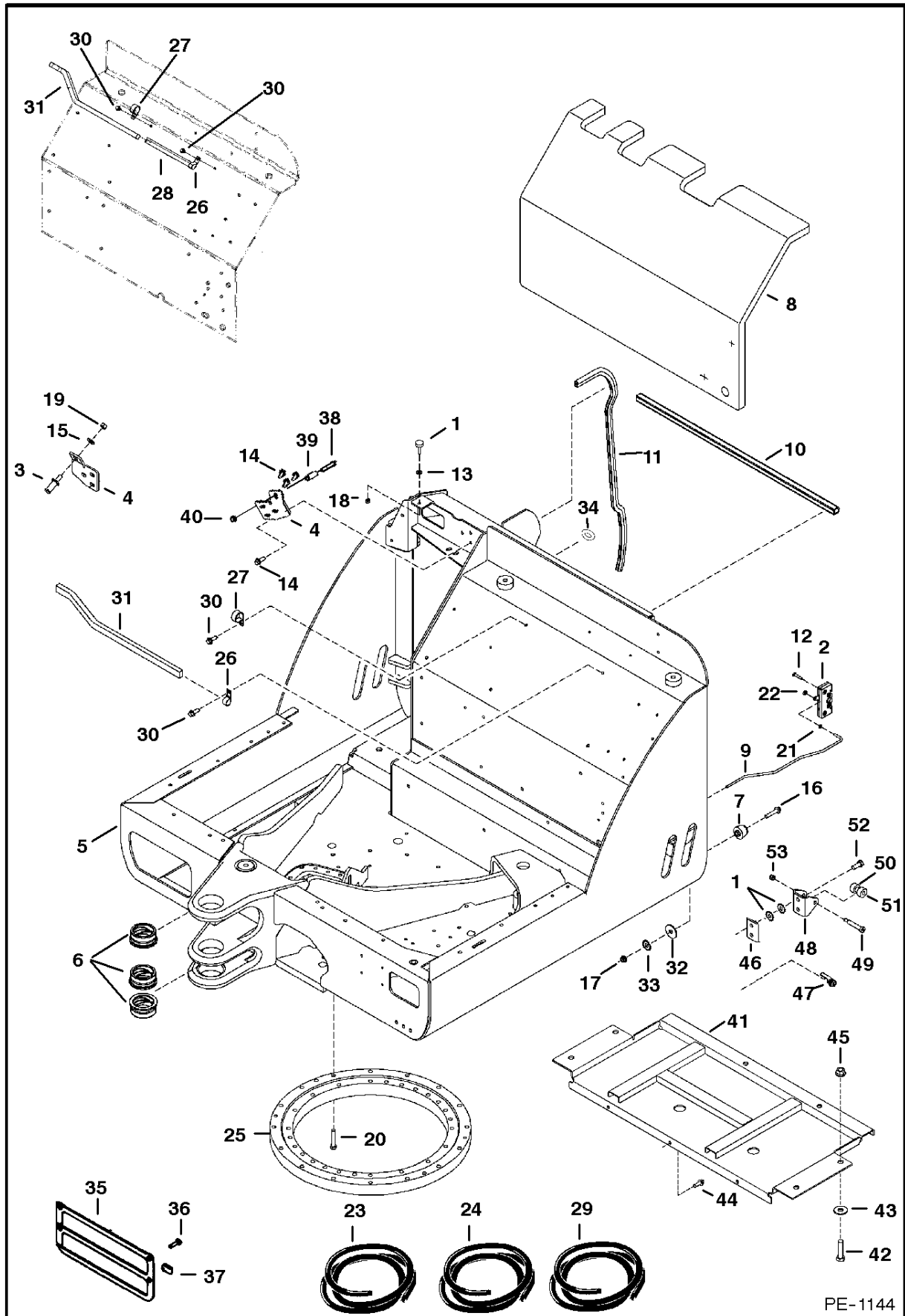
325/328 D-SERIES CONTENTS

MAIN FRAME	12-45
UPPERSTRUCTURE	12-15
INSULATION	16-17
UPPERSTRUCTURE LOCK	18-19
OPERATOR CAB	20-23
CAB	24-25
CANOPY	26-27
R.H. COVER	28-29
OPERATOR CAB (DOOR)	30-31
OPERATORS AREA & SEAT	32-33
SEAT	34-37
R.H. WINDOW	38-39
OPERATOR CAB (FRONT WINDOW)	40-41
TAILGATE	42-45
UNDERCARRIAGE	46-65
UNDERCARRIAGE	46-47
RECOIL SPRING	48-51
FRONT IDLER	52-55
TRACK ROLLER	56-63
TRACKS	64-65
WORK EQUIPMENT	66-83
ARM & BUCKET LINK	66-67
X-CHANGE	68-69
BOOM	70-71
SWING FRAME	72-73
BLADE	74-75
L.H. CONSOLE	76-79
R.H. CONSOLE	80-81
THROTTLE CONTROL	82-83
CONTROL CONSOLE	84-89
CONTROLS	84-89
HYDRAULIC CIRCUITRY	90-203
HYDRAULIC CIRCUITRY	90-113
MANIFOLD ASSY.	114-117
HYDRAULIC RESERVOIR	118-119
ISO/STD	120-121
SELECTOR VALVE ASSY	122-123
JOYSTICK/PILOT HYDRAULICS	124-125
SWIVEL JOINT	126-127
R.H. JOYSTICK (S/N 2323 12386 & BEL., 2324 12117 AND BEL. & 2324 12128-12129)	128-129
L.H. JOYSTICK (S/N 2323 12386 & BEL., 2324 12117 AND BEL. & 2324 12128-12129)	130-131
R.H. JOYSTICK (S/N 2323 12387 & ABV., 2324 12118-12127 & 12130 & ABV.)	132-133
L.H. JOYSTICK (S/N 2323 12387 & ABV., 2324 12118-12127 & 12130 & ABV.)	134-135
TRAVEL MOTOR	136-139
SWING MOTOR	140-141
MOUNT ASSY.	142-143
CROSSPORT RELIEF VALVE	144-145
CONTROL VALVE	146-149
VALVE SECTION	150-169
CONTROL VALVE (S/N & ABOVE)	170-171
VALVE SECTION	172-191
ARM CYLINDER	192-193
BLADE CYLINDER	194-195
BOOM CYLINDER	196-197
BUCKET CYLINDER	198-199
SWING CYLINDER	200-201
CLAMP CYLINDER	202-203
ELECTRICAL SYSTEMS	204-217
CAB ELECTRICAL	204-205
ELECTRICAL	206-213
STARTER	214-215
ALTERNATOR	216-217

325/328 D-SERIES CONTENTS

POWER UNIT	218-269
ENGINE & ATTACHING PARTS	218-225
ROCKER ARM COVER	226-227
VALVES & ROCKER ARM	228-229
CYLINDER HEAD	230-231
OIL PAN	232-233
GEARCASE	234-235
CRANKCASE	236-237
PISTON & CRANKSHAFT	238-239
CAMSHAFT	240-241
FUEL CAMSHAFT	242-243
GOVERNOR	244-245
SPEED CONTROL PLATE	246-247
WATER PUMP	248-249
ENGINE STOP LEVER	250-251
MANIFOLDS	252-253
WATER FLANGE & THERMOSTAT	254-255
INJECTION PUMP	256-259
INJECTION NOZZLES	260-261
UPPER GASKET KIT	262-263
LOWER GASKET KIT	264-265
AIR CLEANER	266-267
FUEL SYSTEM	268-269
ACCESSORIES & OPTIONS	270-404
AUGER	273-288
AUGER MOUNTING KIT	289-290
HYDRAULIC MOTOR	291-296
BREAKER MOUNTING KIT	297-304
BREAKER MOUNTING PACK	305-306
BLOCK HEATER	307-308
BUCKETS	309-310
CAB LIGHT KIT	311-312
CANOPY ENCLOSURE KIT	313-316
CHARGE KIT	317-320
CLAMP	321-322
COMPACTOR	323-324
COUNTERWEIGHT KIT	325-326
DECALS	327-330
DIRECT TO TANK KIT	331-332
GRAPPLE	333-334
HEATER BOX	335-338
HEATER INSTALLATION	339-340
HEATER KIT	341-344
HYDRA-TILT	345-346
HYDRA-TILT CYLINDER	347-348
HYDRAULIC BREAKER	349-362
HYDRAULIC BREAKER TOOLS	363-366
KEYLESS IGNITION KIT	367-368
LONG ARM KIT	369-370
MOTION ALARM KIT	371-372
POWERTILT	373-376
PURIFIER	377-378
SELECTOR VALVE ASSY	379-380
SPECIAL APPLICATIONS CAB	381-382
SPECIAL APPLICATIONS CANOPY KIT	383-384
STEEL TRACK KIT	385-386
TANK HEATER KIT	387-390
TOP GUARD KIT	391-392
VINYL CAB ENCLOSURE KIT	393-394
WIDE LINK KIT	395-396
X-CHANGE™	397-398
X-CHANGE™ BREAKER MOUNTING KIT	399-402
BULK ITEMS	403-404
NUMERICAL INDEX	405-458
NUMERICAL INDEX	405-458

UPPERSTRUCTURE



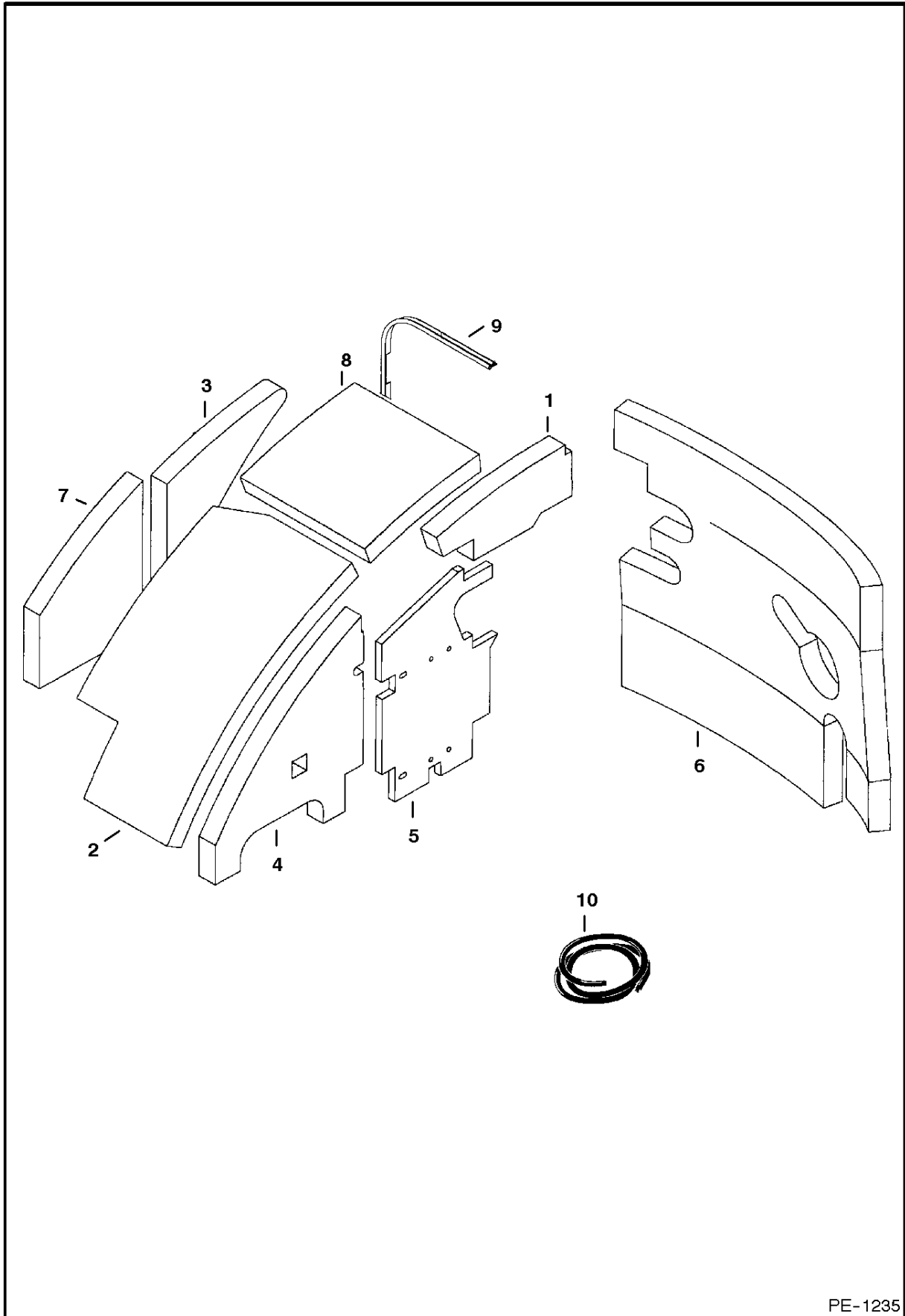
UPPERSTRUCTURE

Ref.N°	Part N°	Description	Remarks	Serial N°	Qty.
1	6655399	BUMPER			1
2	6675687	LATCH	tailgate	2323 11656 & Bel.	1
3	6676341	STRIKER	assy.		1
4	NAP	MOUNT	latch - order 6810655 & Ref. UPPERSTRUCTURE(38), UPPERSTRUCTURE(39) & UPPERSTRUCTURE(40) - Was 6807180 [A]	2323 11614 & Bel.	1
4	6810655	MOUNT	latch	2323 11615 & Abv.	1
5	NAP	*UPPERSTRUCTURE	order 6810128, Refs. UPPERSTRUCTURE(46) - UPPERSTRUCTURE(53) and all parts on page TAILGATE(4) - Was 6807950 [A]	2323 11656 & Bel.	1
5	6810128	UPPERSTRUCTURE(2323 11657 & Bel.01(2324 11446 & Bel.01com3:}H-10{M			x
6	6807956	BUSHING			3
7	6808365	BUMPER			1
8	6808390	INSULATION			1
9	6808472	ROD	tailgate release		1
10	NAP	SEAL	use 35" of Ref. UPPERSTRUCTURE(23)		1
11	NAP	SEAL	use 38" of Ref. UPPERSTRUCTURE(24)		1
12	1CM-630	SCREW			4
13	25E-15	WASHER		2323 11656 & Bel.	1
14	26GM-10020	SCREW	Was 26GM-10030 [B]		3
15	27E-6	WASHER			1
16	29CM-1050	SCREW			1
17	51DM-10	NUT			1
18	61D-5	NUT			1
19	61D-7	NUT			1
20	7CM-1260	SCREW			16
21	7D-4	NUT		2323 11656 & Bel.	1
22	85D-4	NUT		2323 11656 & Bel.	1
23	6675410	SEAL	bulk - sold per foot		x
24	6676396	INSULATION	bulk - sold per foot - Was 6513152 [A]		x
25	6655124	SWING BEARING			1
26	30HJ-512	CLIP	X-Change release bar holder		1
27	30H-57	CLAMP	X-Change release bar holder		1
28	NAP	INSULATION	use 9.1" of Ref. UPPERSTRUCTURE(29)		1
29	6803188	INSULATION	bulk - sold per foot		x
30	26GM-8016	SCREW			2
31	6807074	LEVER	X-Change release		1
32	6560899	WASHER			1
33	6675273	WASHER			1
34	6810133	GROMMET			4
35	6810578	LOUVER			1
36	6809030	SCREW			4
37	6676026	NUT	clip		4
38	17C-640	BOLT		2323 11615 & Abv.	1
39	6719550	TUBE		2323 11615 & Abv.	1
40	55D-6	NUT		2323 11615 & Abv.	1
41	6809064	PLATE	counterweight		1
42	1CM-1630	BOLT	Was 1CM-1665 [B]		4
43	25E-26	WASHER			4
44	26GM-10030	SCREW			3
45	51DM-16	NUT			4
46	6810802	STRIKER	bar	2323 11657 & Abv.	1
47	6678025	LOCK	assy	2323 11657 & Abv.	1

UPPERSTRUCTURE

Ref.N°	Part N°	Description	Remarks	Serial N°	Qty.
47	6709527	KEY		2323 11657 & Abv.	1
48	6809727	CHANNEL		2323 11657 & Abv.	1
49	38C-840	BOLT		2323 11657 & Abv.	1
50	6809726	ROLLER		2323 11657 & Abv.	2
51	6809734	BUSHING		2323 11657 & Abv.	1
52	17C-820	BOLT		2323 11657 & Abv.	2
53	59D-6	NUT		2323 11657 & Abv.	1

INSULATION

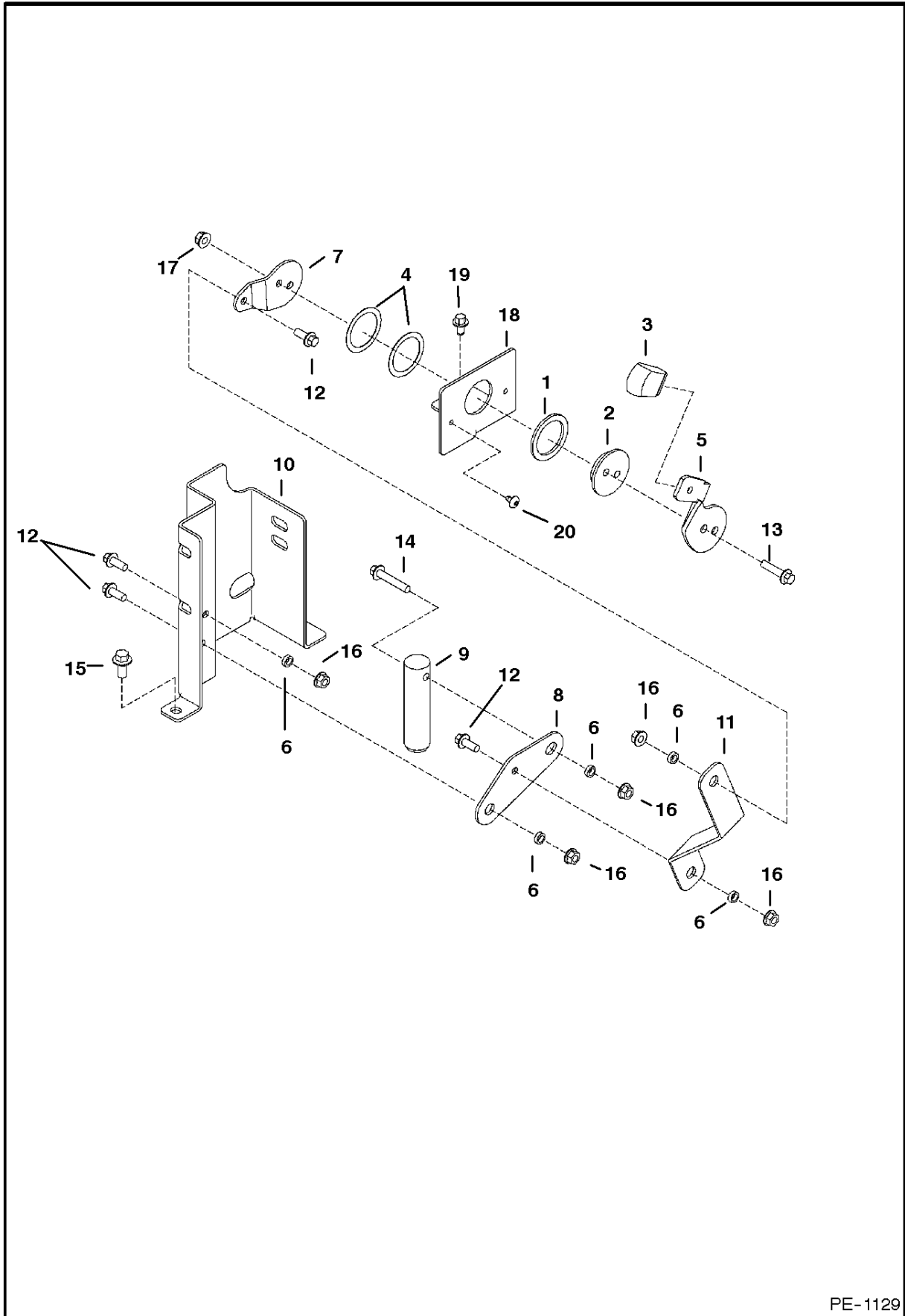


PE-1235

INSULATION

Ref.N°	Part N°	Description	Remarks	Serial N°	Qty.
1	6809239	INSULATION	Was 6808239 [D]		1
2	6808484	INSULATION			1
3	6808485	INSULATION			1
4	6809238	INSULATION			1
5	6809240	INSULATION		& Below	1
5	6811150	INSULATION		& Above	1
6	6809257	INSULATION			1
7	6809269	INSULATION			1
8	6809270	INSULATION			1
9	NAP	INSULATION	use 39.5" of Ref. INSULATION(10)		1
10	6676396	INSULATION	bulk - sold per foot		x

UPPERSTRUCTURE LOCK

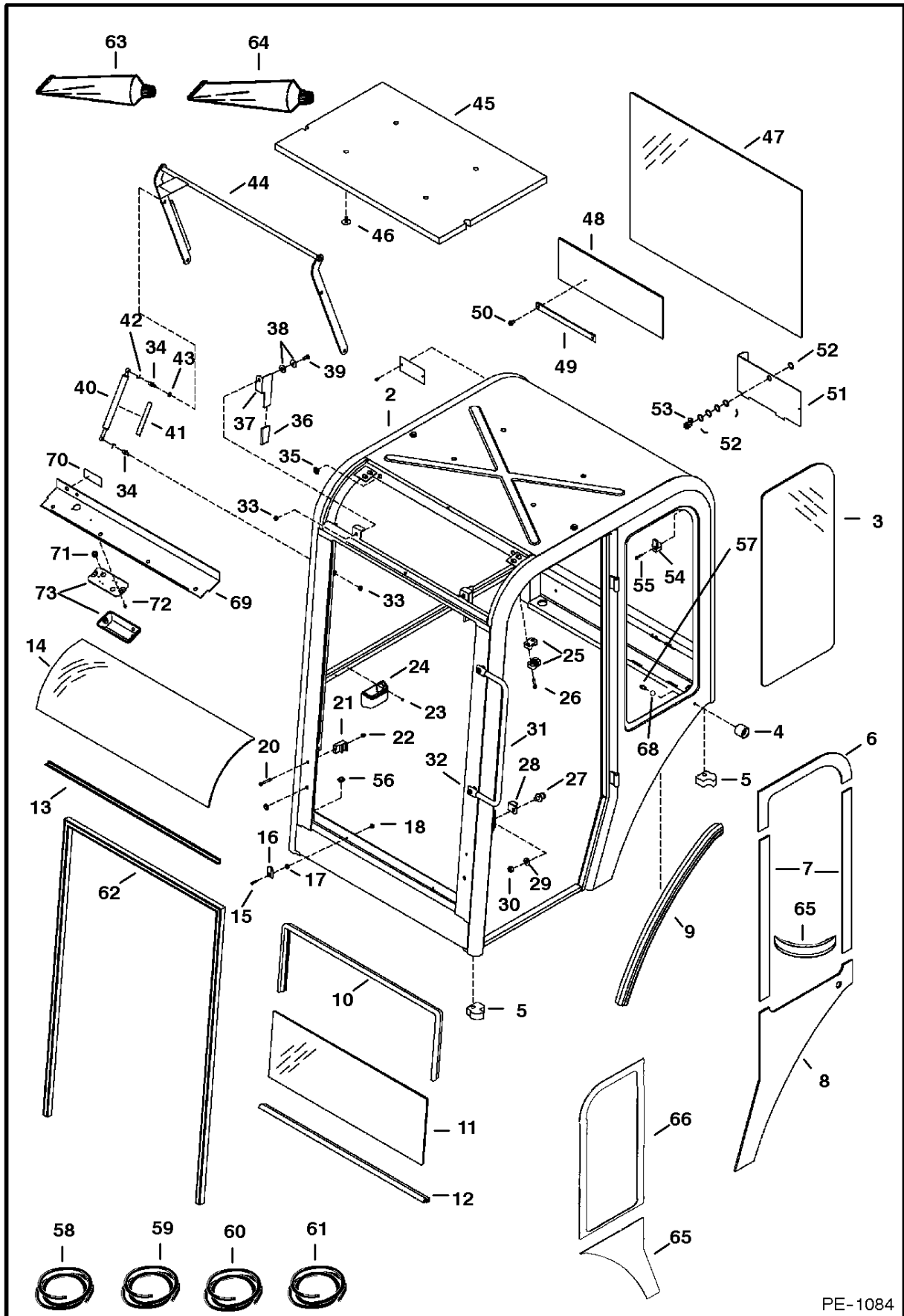


PE-1129

UPPERSTRUCTURE LOCK

Ref.N°	Part N°	Description	Remarks	Serial N°	Qty.
1	6567962	WASHER			1
2	6567963	SPACER			1
3	6586856	KNOB	lever		1
4	6630945	WASHER			2
5	6717393	LEVER	lock		1
6	6807220	SPACER			5
7	6808596	LEVER			1
8	6808597	LEVER			1
9	6808598	PIN			1
10	6808599	BRACKET			1
11	6809086	LINK			1
12	29CM-820	BOLT			4
13	29CM-835	SCREW			2
14	29CM-845	SCREW			1
15	26GM-10020	SCREW	Was 29CM-1020 [D]		2
16	43DM-8	NUT			6
17	51DM-8	NUT			2
18	6809675	BRACKET			1
19	266GM-8016	SCREW			2
20	6589675	SCREW			2

OPERATOR CAB



PE-1084

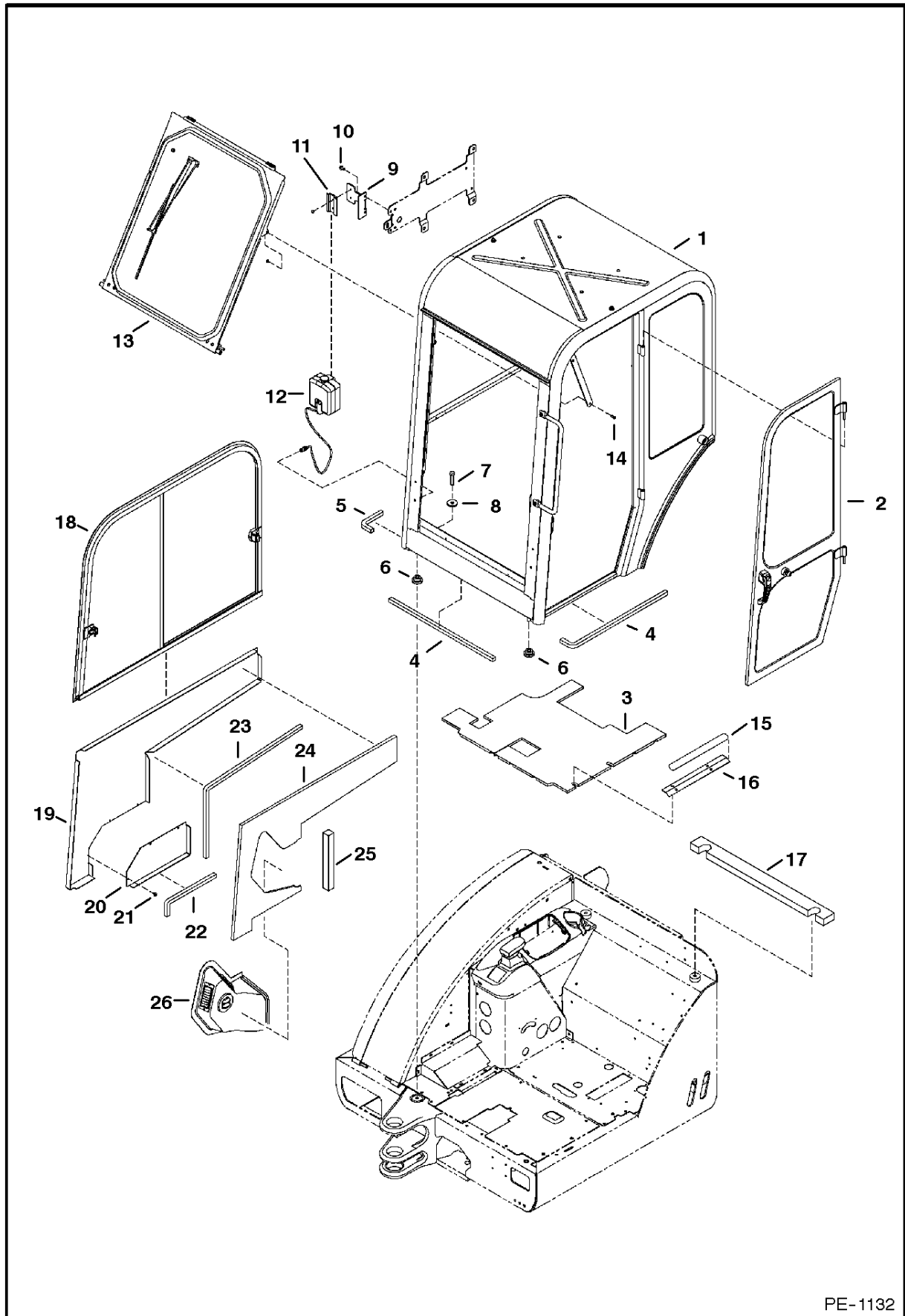
OPERATOR CAB

Ref.N°	Part N°	Description	Remarks	Serial N°	Qty.
1	6809821	CAB	complete W/Ref. OPERATOR CAB(2)-OPERATOR CAB(62) and door, front window, side window & decals - Was 6809244 [A]		1
2	6805882	CAB	W/A		1
3	6806459	WINDOW	L. H.		1
4	6675386	SOCKET	hold-open		1
5	6807987	INSULATION			4
6	6808444	INSULATION			1
7	6808443	INSULATION			2
8	6808442	INSULATION			1
9	NAP	SEAL	use 29" of Ref. OPERATOR CAB(58)		1
10	NAP	SEAL	use 5' of Ref. OPERATOR CAB(59)		1
11	6800637	WINDOW	front - lower		1
12	NAP	SEAL	use 3' of Ref. OPERATOR CAB(59)		1
13	NAP	SEAL	use 3' of Ref. OPERATOR CAB(60)		1
14	6805903	WINDOW	curved		1
15	6801188	SCREW			2
16	6804758	RETAINER			2
17	6664085	BUSHING			4
18	6664103	NUT			2
19	6670761	CAP			1
20	6664066	BOLT			2
21	6800651	MOUNT			2
22	6664056	NUT			2
23	58G-806	SCREW			2
24	6664075	ASH TRAY			1
25	6664560	BLOCK			4
26	29G-420	SCREW			4
27	6654170	STRIKER BOLT	striker		1
28	6664083	COVER	striker		1
29	27E-6	WASHER			1
30	61D-7	NUT			1
31	6809112	GRAB HANDLE	grab		1
32	29CM-820	BOLT			2
33	87D-5	NUT			3
34	6649244	BALL STUD			2
35	6664562	GROMMET			3
36	6670760	GRIP	handle		2
37	6801032	HANDLE	L. H.		1
37	6801031	HANDLE	R. H.		1
38	sbb1				x
38					x
38		WASHER			4
39	6800857	BOLT			2
40	6667199	GAS SPRING			1
41	6577754	DECAL	gas spring - warning		1
42	6649245	CLIP			1
43	4E-5	WASHER			1
44	6803154	LINKAGE	window		1
45	6628899	INSULATION			1
46	6664559	FASTENER			4
47	6664172	WINDOW	rear		1
48	6808432	INSULATION			1
49	6589347	STRAP	elastic		1
50	26GM-8016	SCREW			2
51	6589655	PANEL			1

OPERATOR CAB

Ref.N°	Part N°	Description	Remarks	Serial N°	Qty.
52	6536802	WASHER			5
53	6675723	LOCK	assy.		1
54	6658289	HOOK	coat		1
55	6808424	SCREW			1
56	NAP	SEAL	use 2.5" of Ref. OPERATOR CAB(61)		2
57	17C-508	BOLT			1
58	6807611	SEAL	bulk - sold per foot		1
59	6664088	SEAL	bulk - sold per foot		1
60	6670537	SEAL	bulk - sold per foot		1
61	6670759	SEAL	bulk - sold per foot		1
62	NAP	SEAL	bulk - sold per foot		1
63	6808882	ADHESIVE			x
64	6808881	DEGREASER	for Ref. OPERATOR CAB(63)		x
65	6810463	INSULATION			1
66	6809804	INSULATION			1
67	6809803	INSULATION			1
68	27E-5	WASHER			1
69	6628898	CONSOLE			1
70	6808665	DECAL			1
71	1303932	GROMMET			1
72	58G-806	SCREW			1
73	6664084	DOME LIGHT			1
73	6665367	BULB			1

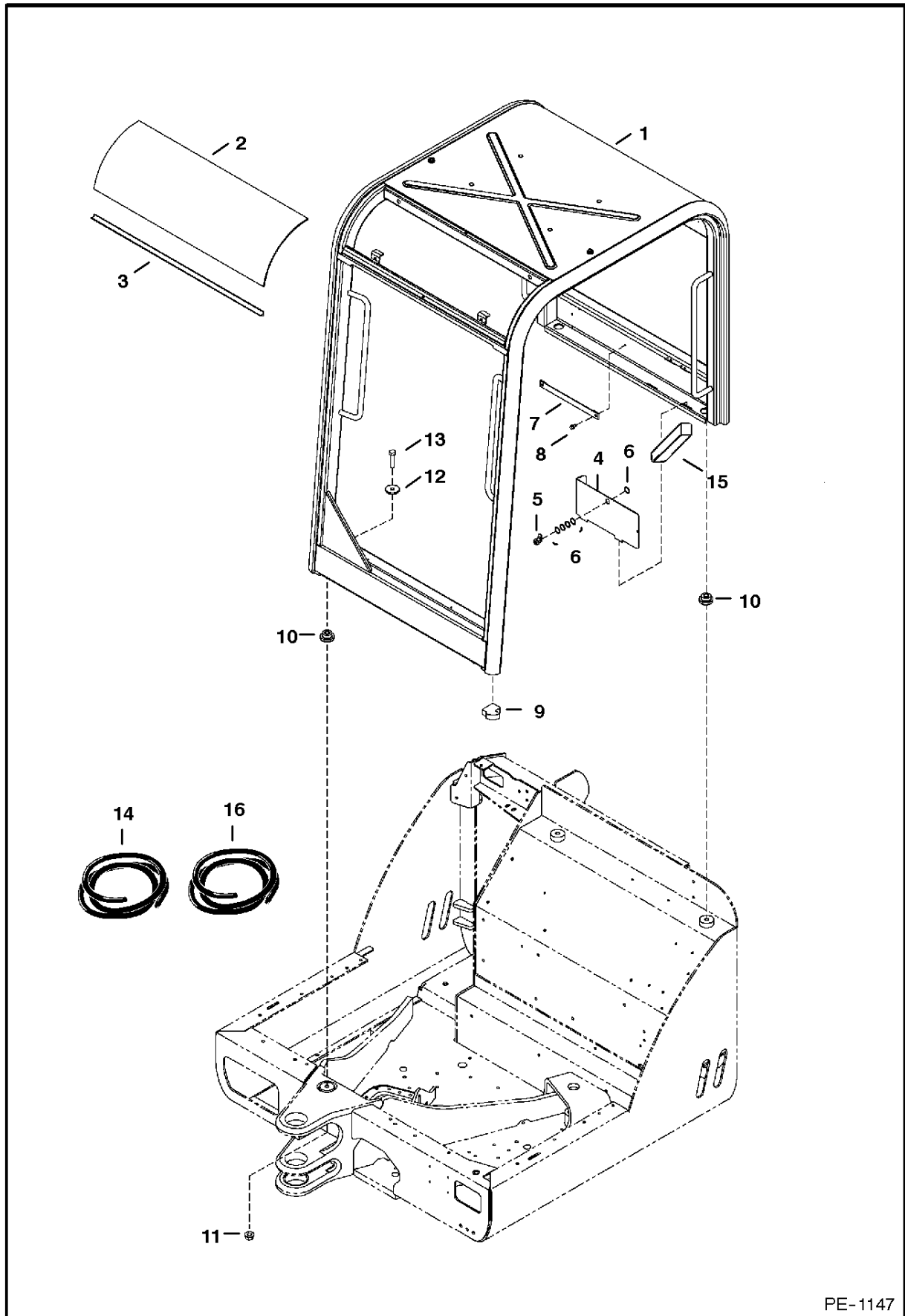
CAB



PE-1132

Ref.N°	Part N°	Description	Remarks	Serial N°	Qty.
1	6805882	CAB	W/A - See Page OPERATOR CAB(1) - Was 6809821 [A]		1
2	6807782	DOOR ASSY	See Page OPERATOR CAB(1)		1
3	6809412	MAT	floor	2323 11256 & Bel.	1
3	6809917	MAT	floor	2323 11257 & Abv.	1
4	6808577	SEAL			2
5	6809413	SEAL			1
6	6804026	MOUNT			4
7	10CM-1455	SCREW	Was 10CM-1460 [B]		4
8	6805244	WASHER			4
9	6809173	BRACKET		& Below	1
9	6812124	BRACKET		& Above	1
10	26GM-10020	SCREW			2
11	6664557	BRACKET			1
12	6664438	WASHER	assy		1
12	6664554	PUMP			1
12	6664556	HOSE			1
12	6664555	NOZZLE			1
13	6807874	WINDOW	front - See Page OPERATOR CAB(3)		1
14	6800857	BOLT	shoulder		1
15	6807327	TREAD			1
16	6807326	ANGLE			1
17	6809712	SEAL			1
18		WINDOW	R. H. - See R.H. WINDOW(2)		1
19	6808935	PANEL			1
20	6808936	PANEL			1
21	6589675	SCREW			3
22	6809414	SEAL			1
23	6809415	SEAL			1
24	6809416	INSULATION			1
25	6809430	INSULATION	Was 6809340 [D]		1
26	6810680	DUCT	assy		1
26	6676713	LOUVER			2
26	6676471	LOUVER	round		2
26	57G-608	SCREW			4
26	NAP	DUCT	order 6810608 - Was 6808516 [A]		1

CANOPY

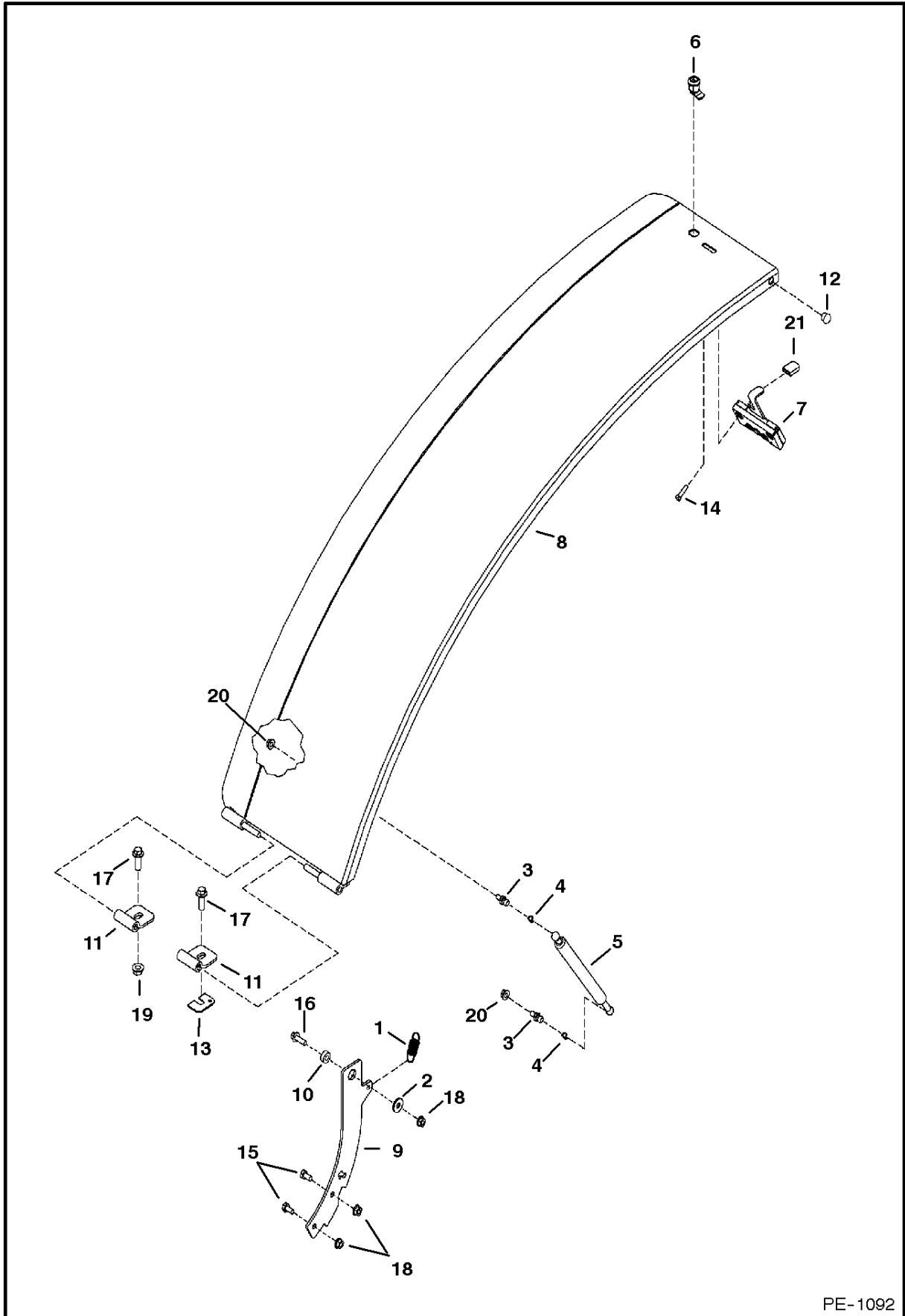


PE-1147

CANOPY

Ref.N°	Part N°	Description	Remarks	Serial N°	Qty.
1	6810515	CANOPY	Was 6805906 [A]		1
2	6805903	WINDOW			1
3	NAP	SEAL	use 36" of Ref. CANOPY(14)		1
4	6589656	PANEL			1
5	6675723	LOCK	assy. - W/O Key		1
5	6709527	KEY			1
6	6536802	WASHER			5
7	6589347	STRAP	elastic		1
8	26GM-8016	SCREW			2
9	6807987	INSULATION			4
10	6804026	MOUNT			4
11	43DM-14	NUT			4
12	6805244	WASHER			8
13	10CM-1455	SCREW	Was 10CM-1460 [B]		4
14	6670537	SEAL	bulk - sold per foot		x
15	NAP	SEAL	use 4" of Ref. CANOPY(16)		1
16	6648416	SEAL	bulk - sold per foot		x

R.H. COVER

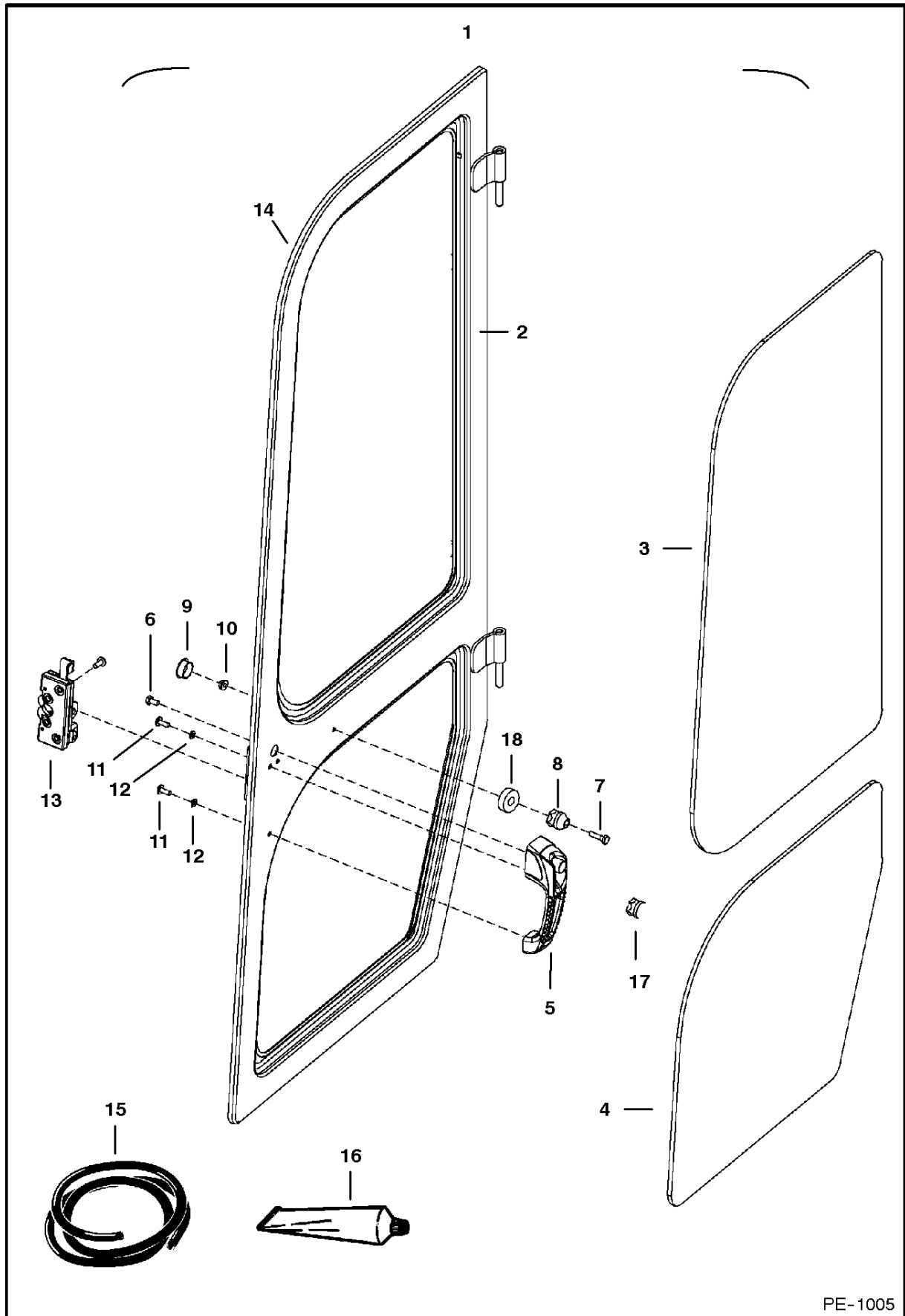


PE-1092

R.H. COVER

Ref.N°	Part N°	Description	Remarks	Serial N°	Qty.
1	6563128	SPRING			1
2	6563914	WASHER			1
3	6649244	BALL STUD			2
4	6649245	CLIP			2
5	6667199	GAS SPRING			1
6	6675723	LOCK			1
7	6676342	LATCH			1
8	6807012	COVER			1
9	6808408	BRACKET			1
10	6808409	SPACER			1
11	6808802	HINGE			2
12	6808841	BUMPER			1
13	6809262	SHIM	hinge		1
14	1CM-625	BOLT			4
15	1CM-816	BOLT			2
16	29CM-825	SCREW			1
17	29CM-1030	SCREW			2
18	43DM-8	NUT			3
19	43DM-10	NUT			1
20	55D-5	NUT			2
21	6677500	COVER	lever		1

OPERATOR CAB (Door)

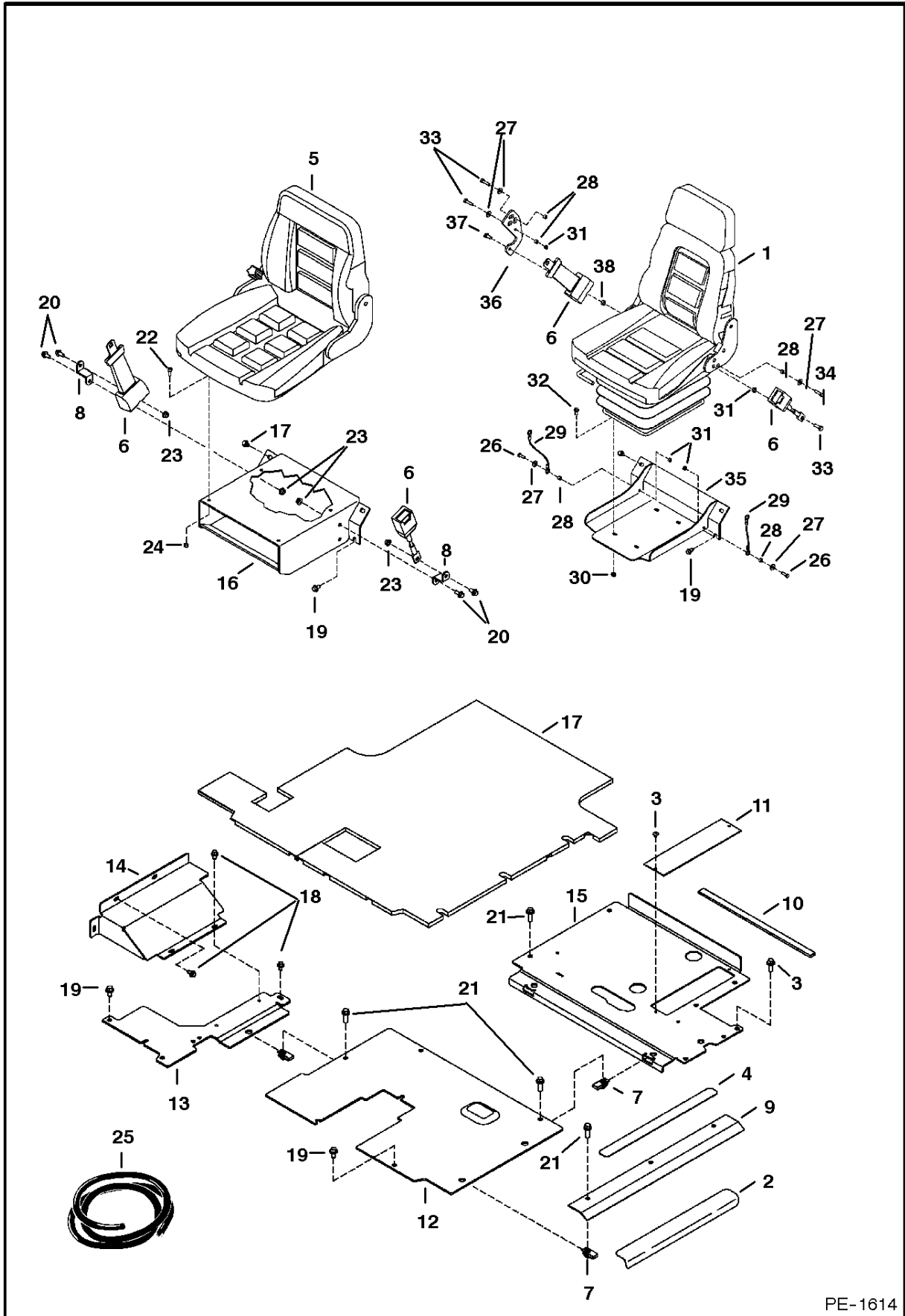


PE-1005

OPERATOR CAB

Ref.N°	Part N°	Description	Remarks	Serial N°	Qty.
1	6807782	DOOR ASSY	assy. Ref. OPERATOR CAB(2) - OPERATOR CAB(14) - Was 6805226 [D]		1
2	6805469	DOOR			1
3	6805470	GLASS	Upper		1
4	6805471	GLASS	Lower		1
5	6674667	HANDLE	Was 6675282 [D]		1
5	6709527	KEY	door/ignition		1
6	17C-408	BOLT			1
7	17C-416	BOLT			1
8	6675385	PLUG	hold open		1
9	6648391	PLUG	hole		1
10	55D-4	NUT			1
11	6803202	SCREW			5
12	6EM-60	WASHER			2
13	6674666	LATCH			1
14	NAP	SEAL	door - Order Ref. OPERATOR CAB(15) - 158" (4013,2 mm) long		1
15	6675410	SEAL	bulk		x
16	6675462	URETHANE	10.5 oz. tube, black		x
17	6675386	SOCKET	hold open		1
18	6808446	SPACER			1

OPERATORS AREA & SEAT

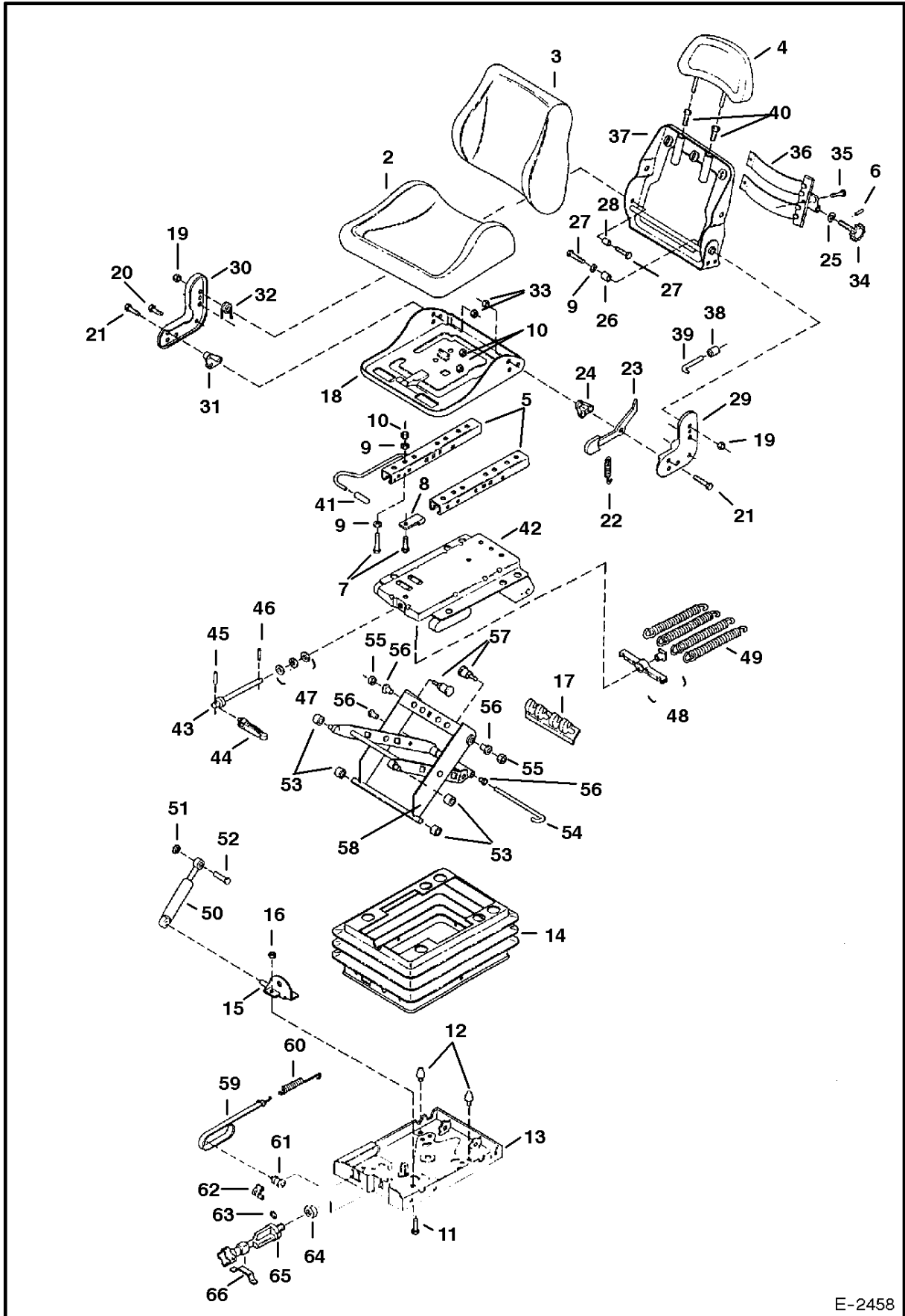


PE-1614

OPERATORS AREA & SEAT

Ref.N°	Part N°	Description	Remarks	Serial N°	Qty.
1	6672520	SEAT	vinyl - 328D - See Page SEAT(2)		1
2	6588953	SAFETY TREAD			1
3	6589675	SCREW		2323 11258 & Bel.	6
4	6593245	TREAD			1
5	6632388	SEAT			1
6	6670865	SEAT BELT	assy.		1
7	6675722	NUT			6
8	6803375	BRACKET			2
9	6808077	ANGLE			1
10	NAP	SEAL	use 12" of Ref. OPERATORS AREA & SEAT(25)		1
11	6808416	COVER		2323 11258 & Bel.	1
12	6808933	PLATE	floor		1
13	6808934	PLATE	floor		1
14	6808937	COVER	swing motor		1
15	6809693	PLATE	floor - Was 6808968 [A]	2323 11258 & Bel.	1
15	6809916	PLATE	floor	2323 11259 & Abv.	1
16	6809007	MOUNT	seat	2323 11259 & Abv.	1
17	6809136	MAT	floor, canopy		1
18	26GM-8016	SCREW			6
19	26GM-10020	SCREW			11
20	29CM-1020	BOLT			4
21	29CM-1030	SCREW			8
22	3GM-820	SCREW			4
23	43DM-10	NUT			4
24	4DM-8	NUT			4
25	6646705	MOULDING	bulk - sold per foot		x
26	1CM-825	BOLT	328D only		2
27	25E-16	WASHER	328D only		6
28	6802539	SPACER	328D only		2
29	6589689	CABLE	328D only		2
30	51DM-8	NUT	328D only		4
31	53DM-8	NUT	328D only		3
32	29CM-820	BOLT	328D only		4
33	1CM-1030	BOLT	328D only		1
34	1CM-835	BOLT	328D only		4
35	6809224	MOUNT	328D only		1
36	6803068	BRACKET	328D only		1
37	1CM-1020	BOLT	328D only		1
38	53DM-10	NUT	328D only		2

SEAT (Suspension)



E-2458

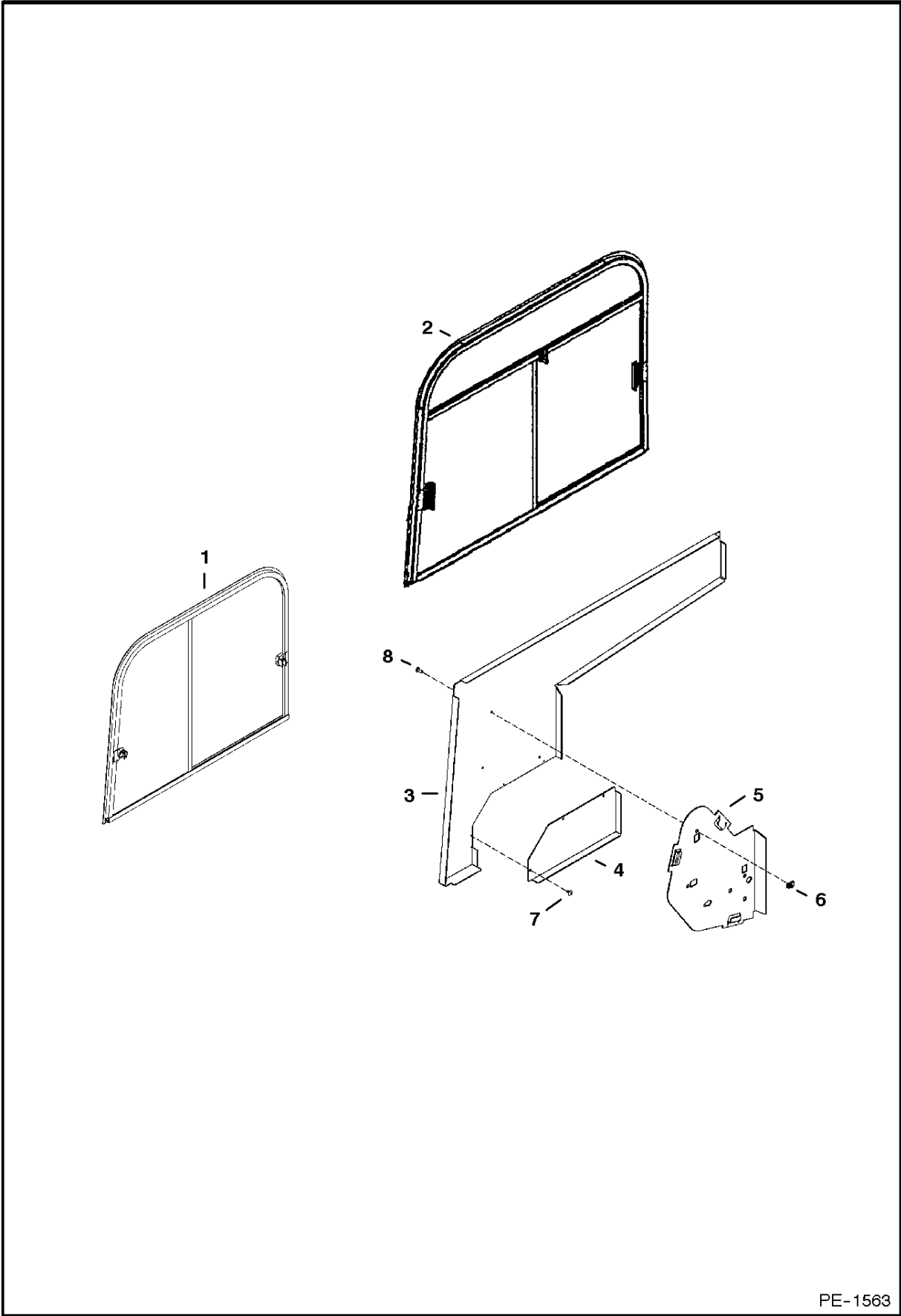
SEAT

Ref.N°	Part N°	Description	Remarks	Serial N°	Qty.
1	6672519	SEAT	Complete - Cloth Covered - W/Refs. SEAT(2) - SEAT(19)		1
1	6672520	SEAT	Complete - Vinyl Covered - W/Refs. SEAT(2) - SEAT(19)		1
2	6664180	CUSHION	Bottom - vinyl		1
2	6659451	CUSHION	Bottom - cloth		1
3	6670721	CUSHION	Back - vinyl		1
3	6659447	CUSHION	Back - cloth		1
4	6659456	HEADREST	Cloth		1
4	6675041	HEADREST	Vinyl		1
5	6677479	RAILS	Set - Was 6677479 [D]		1
6	NSS	PIN	Order Ref. SEAT(34)		1
7	1CM-816	BOLT			4
8	6675040	STOP			1
9	6659431	WASHER			12
10	1DM-8	NUT			4
11	1CM-612	SCREW			3
12	6650509	BUMPER			2
13	6675061	PLATE	Lower - W/Ref. SEAT(61), SEAT(62), SEAT(12)		1
14	6659424	COVER			1
15	6675062	STOP	W/Ref. SEAT(11), SEAT(16)		1
16	1DM-6	NUT			1
17	6675063	SPRING			1
18	6675044	SEAT PAN			1
19	6668060	NUT			2
20	1CM-825	BOLT			4
21	NSS	BOLT			2
22	6675045	SPRING			1
23	6675046	LEVER	W/Ref. SEAT(22)		1
24	6675047	PLATE			1
25	NSS	WASHER	Order Ref. SEAT(34)		1
26	6675048	TUBE			1
27	1CM-830	BOLT			2
28	6675049	BUSHING			1
29	6675067	BRACKET LT.	W/Ref. SEAT(9), SEAT(20), SEAT(21), SEAT(23), SEAT(24), SEAT(26), SEAT(27), SEAT(38), SEAT(39), SEAT(19)		1
30	6675068	BRACKET RT.	W/Ref. SEAT(20), SEAT(21), SEAT(27), SEAT(28), SEAT(31), SEAT(32), SEAT(19)		1
31	6675050	PLATE			1
32	6675051	SPRING			1
33	61D-7	NUT			4
34	6675052	SPINDLE	W/Ref. SEAT(6)		1
35	NSS	RIVET	Order Ref. SEAT(36)		1
36	6675053	SUPPORT	W/Ref. SEAT(35)		1
37	6675054	BACKREST			1
38	NSS	KNOB	Order Ref. SEAT(29)		1
39	NSS	ROD	Order Ref. SEAT(29)		1
40	6659444	BUSHING			1
41	6675066	HANDLE			1
42	6675055	MOUNT			1
43	6675065	SPINDLE	Assy. - W/Ref. SEAT(44)		1
44	6675056	HANDLE	W/Ref. SEAT(4)		1
45	NSS	PIN	Order Ref. SEAT(44)		1
46	6659404	DOWEL	Was 6659429 [A]		1
47	NSS	WASHER	Order Ref. SEAT(43)		3

SEAT

Ref.N°	Part N°	Description	Remarks	Serial N°	Qty.
48	NSS	BRACKET	Order Ref. SEAT(43)		1
49	6659408	SPRING			4
50	6659409	SHOCK	W/Ref. SEAT(51), SEAT(52)		1
51	6650441	WASHER			1
52	6650475	BOLT			1
53	6650464	ROLLER			4
54	6675057	PIN			1
55	1DM-8	NUT			2
56	6650488	BUSHING			4
57	6675058	BOLT			2
58	6675059	ARMS	Assy. Ref. SEAT(53) - SEAT(57), SEAT(17)		1
59	6675060	INDICATOR	Weight - W/Ref. SEAT(60) - SEAT(62)		1
60	6650474	SPRING			1
61	6650460	ROLLER			1
62	6650466	GUIDE			1
63	6650440	WASHER			1
64	6650459	WASHER			1
65	6659420	REGULATOR	Height - W/Ref. SEAT(63), SEAT(64), SEAT(66)		1
66	6659423	BAND			1

R.H. WINDOW

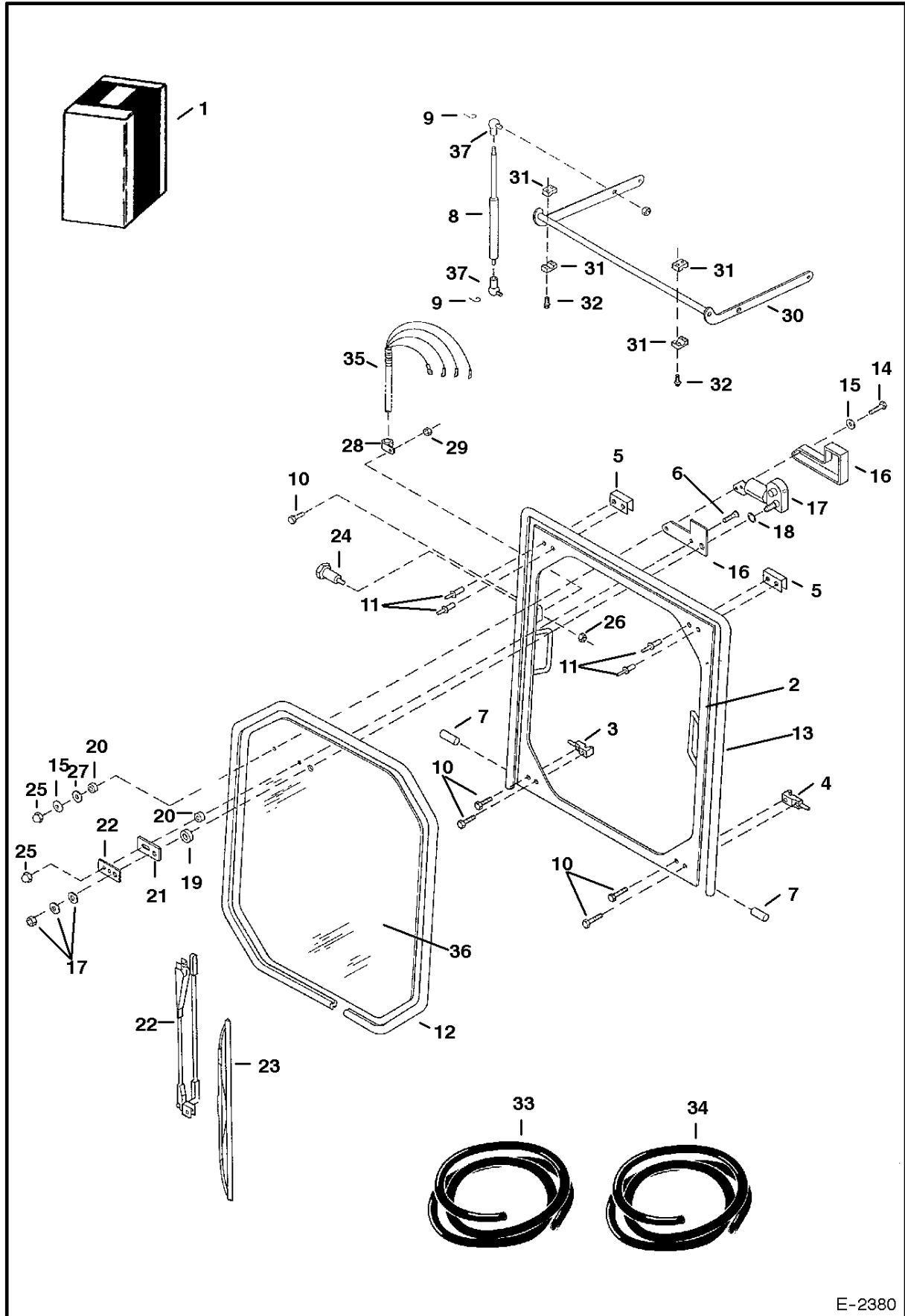


PE-1563

R.H. WINDOW

Ref.N°	Part N°	Description	Remarks	Serial N°	Qty.
1	NAP	WINDOW	assy. - order Ref. R.H. WINDOW(2)	2323 11540 & Bel.	1
1	6676981	WINDOW	rear		1
1	6676982	WINDOW	front		1
1	6677141	LATCH	front		1
1	6677142	LATCH	rear		1
1	NAP	SEAL	bottom sliding - use 87" (2185mm) of Ref. R.H. WINDOW(9)		1
1	NAP	SEAL	sides & top use 110" (2794mm) of Ref. R.H. WINDOW(10)		1
1	NAP	WIPER	use 32" (813mm) per window of Ref. R.H. WINDOW(11)		1
2	NAP	SEAL	sides & top use 178" (4521mm) of Ref. R.H. WINDOW(10)		1
2	NAP	WIPER	use 24" (610mm) per window of Ref. R.H. WINDOW(11)		1
2	6810369	WINDOW	assy	2323 11541 & Abv.	1
2	6678744	WINDOW	rear		1
2	6678745	WINDOW	front		1
2	6679641	LATCH KIT			2
2	NAP	SEAL	bottom sliding - use 87" (2185mm) of Ref. R.H. WINDOW(9)		1
3	6808935	PANEL			1
4	6808936	PANEL			1
5	6810395	PLATE			1
6	6676026	NUT			3
7	6589675	SCREW			3
8	6803202	SCREW			3
9	6680147	SEAL	bulk - sold per food		x
10	6680146	SEAL	bulk - sold per food		x
11	6680148	WIPER	bulk - sold per food		x

OPERATOR CAB (Front Window)

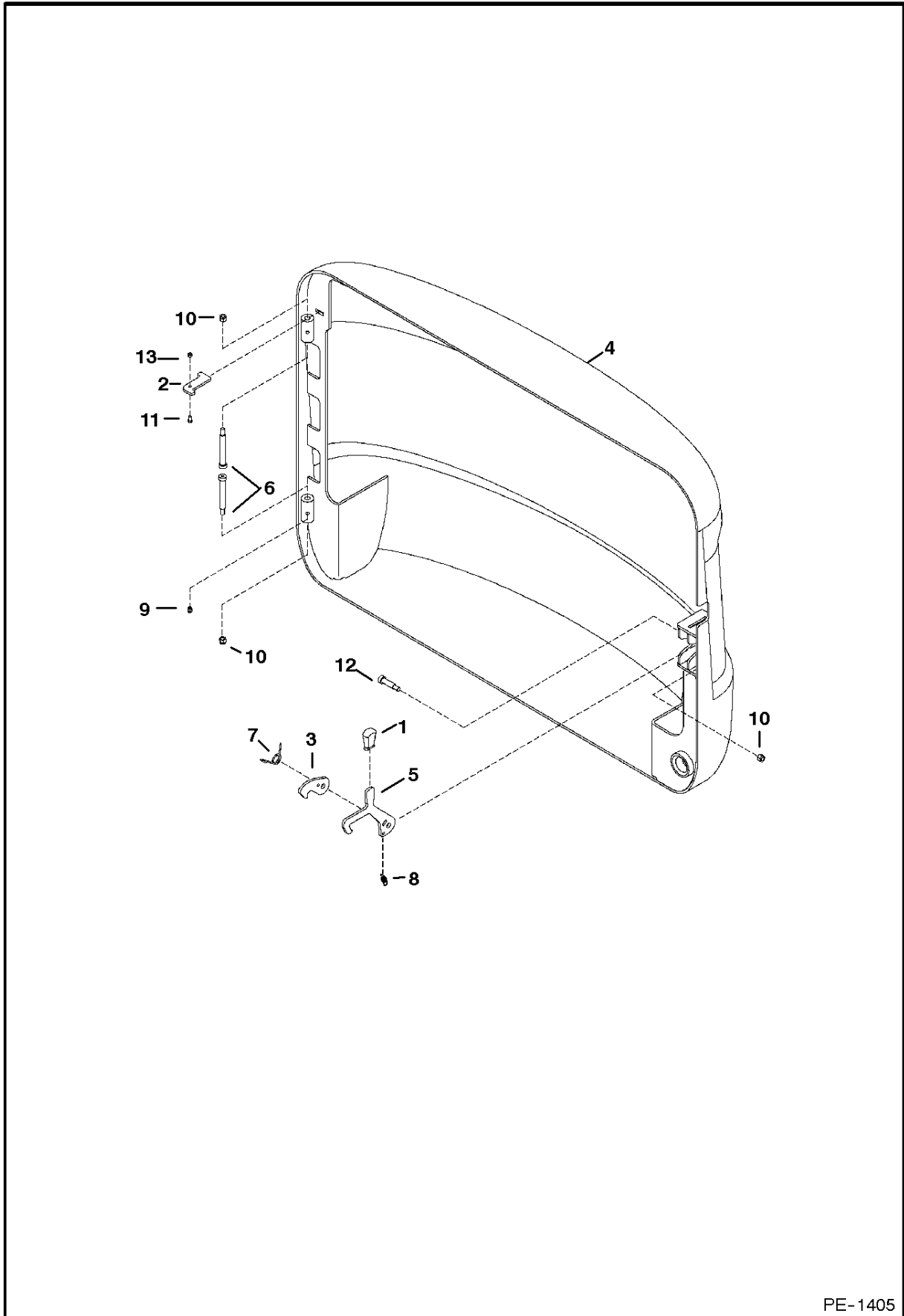


E-2380

OPERATOR CAB

Ref.N°	Part N°	Description	Remarks	Serial N°	Qty.
1	6800880	WINDOW ASSY	Incl. Refs. 1-6, 10-17, 19-23, 25, 27-29 & 35		1
2	6800876	FRAME			1
3	6801502	LATCH	R.H.		1
4	6628889	HANDLE			1
5	6801503	LATCH	L.H.		1
6	6628889	HANDLE			1
7	6801420	CHANNEL			2
8	6801188	SCREW			1
9	6800873	ROLLER			1
10	6667199	GAS SPRING			1
11	6649245	CLIP	Ball Joint Retainer		2
12	6667196	BOLT	5/8' long		5
13	6630207	RIVET			4
14	NAP	SEAL	119' (3018mm) long - Order Re. OPERATOR CAB(35)		1
15	NAP	SEAL	180' (4572mm) long - Order Ref. OPERATOR CAB(36)		1
16	6664566	SCREW			2
17	6664065	WASHER			2
18	6664177	COVER	Wiper Motor		1
19	6668137	MOTOR	Single speed		1
20	6664098	O-RING	Wiper Motor Shaft		1
21	6667201	SPACER			1
22	6664085	BUSHING			2
23	6664178	GASKET			1
24	6664095	ARM	Wiper - W/Pivot Mount		1
25	6664096	BLADE	Wiper		1
26	6800857	BOLT			2
27	6664103	NUT			2
28	6648364	NUT			2
29	6801059	WASHER			1
30	30H-21	CLAMP			1
31	6669138	NUT			1
32	6803154	LINKAGE			1
33	6664560	BLOCK	Linkage Mount		2
34	6664059	BOLT			4
35	6514301	SEAL	Bulk - Sold Per Foot		x
36	6675410	SEAL	Bulk - Sold Per Foot - Was 6670759 [A]		x
37	6812142	HARNESS	Wiper - Was 6669142 [A]		1
37	6810807	HARNESS	Cab - Was 6669141 [A]		1
38	6667195	GLASS			1
39	6649244	BALL STUD			2

TAILGATE
(S/N 2323 11657 & Above and 2324 11446 & Above)

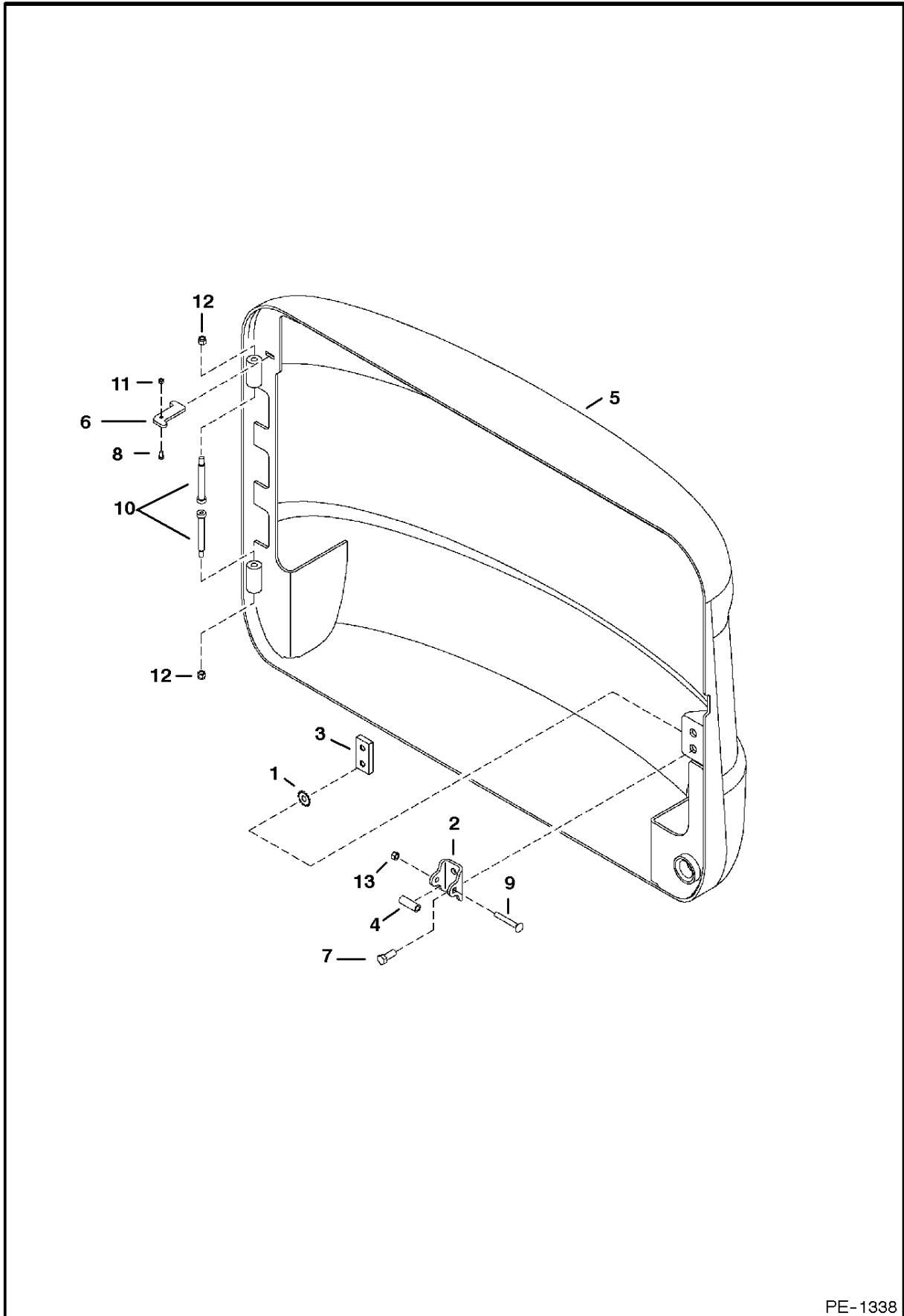


PE-1405

TAILGATE

Ref.N°	Part N°	Description	Remarks	Serial N°	Qty.
1	6564452	GRIP	lever		1
2	6808706	STOP			1
3	6811376	LATCH		2323 11838 & Bel.	1
3	6811910	LATCH		2323 11839 & Abv.	1
4	6809822	TAILGATE			1
5	6809830	HANDLE	order 6811909 & 6811910	2323 11838 & Bel.	1
5	6811909	HANDLE		2323 11839 & Abv.	1
6	6809845	SCREW			2
7	6810132	SPRING			1
8	6810141	SPRING			1
9	10H-25	GREASE ZERK			2
10	59D-6	NUT			3
11	1CM-612	SCREW			1
12	38C-824	SCREW			1
13	4DM-6	NUT			1

TAILGATE
(S/N 2323 11656 & Below and 2324 11445 & Below)

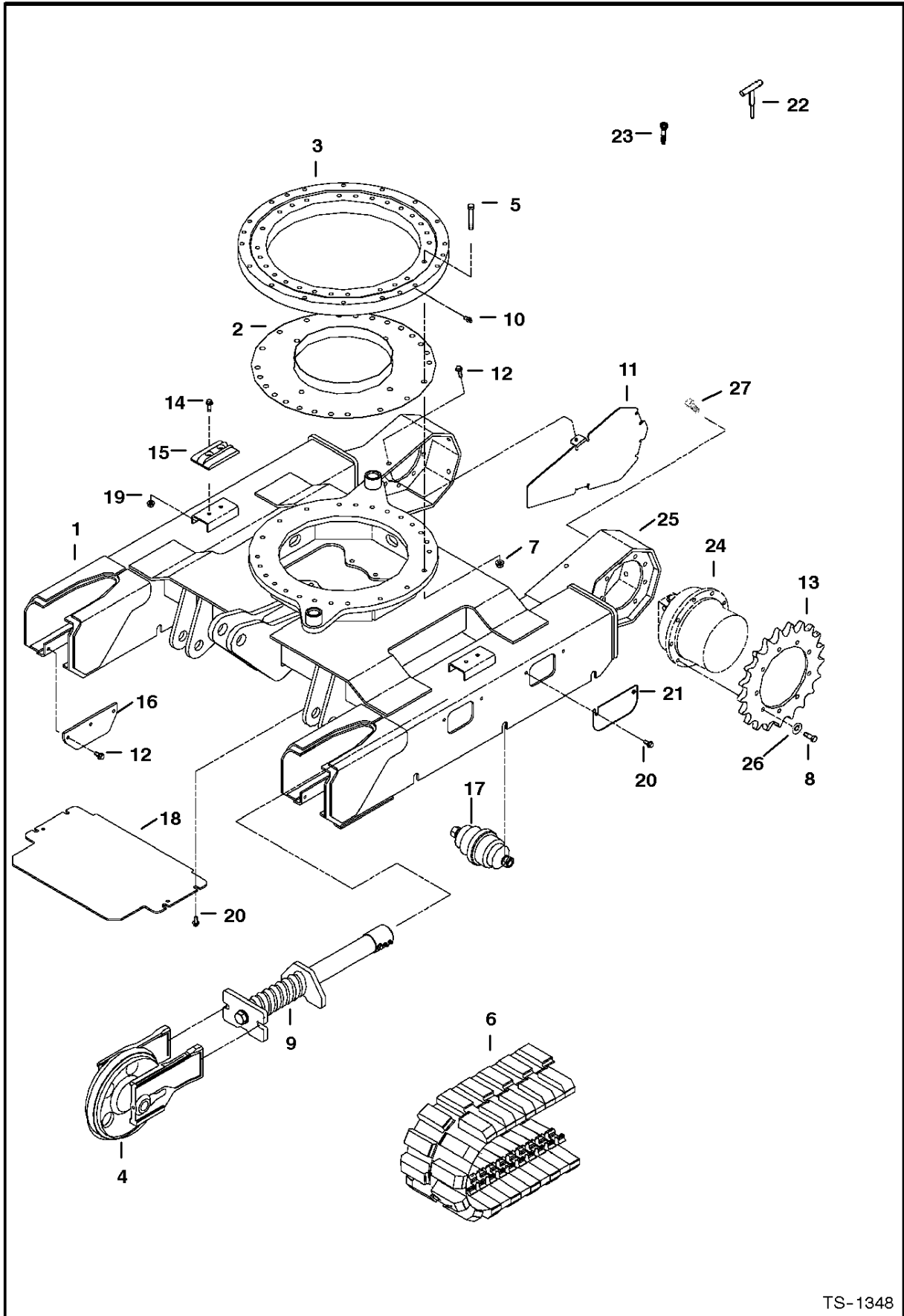


PE-1338

TAILGATE

Ref.N°	Part N°	Description	Remarks	Serial N°	Qty.
1	6675273	WASHER			2
2	6719524	STRIKER			1
3	6719525	BAR			1
4	6719550	TUBE			1
5	6806952	TAILGATE			1
6	6808706	STOP			1
7	17C-820	BOLT			2
8	1CM-612	SCREW			1
9	37C-644	BOLT			1
10	6809845	SCREW	Was 38C-856 [A]		2
11	4DM-6	NUT			1
12	59D-6	NUT			2
13	61D-6	NUT			1

UNDERCARRIAGE

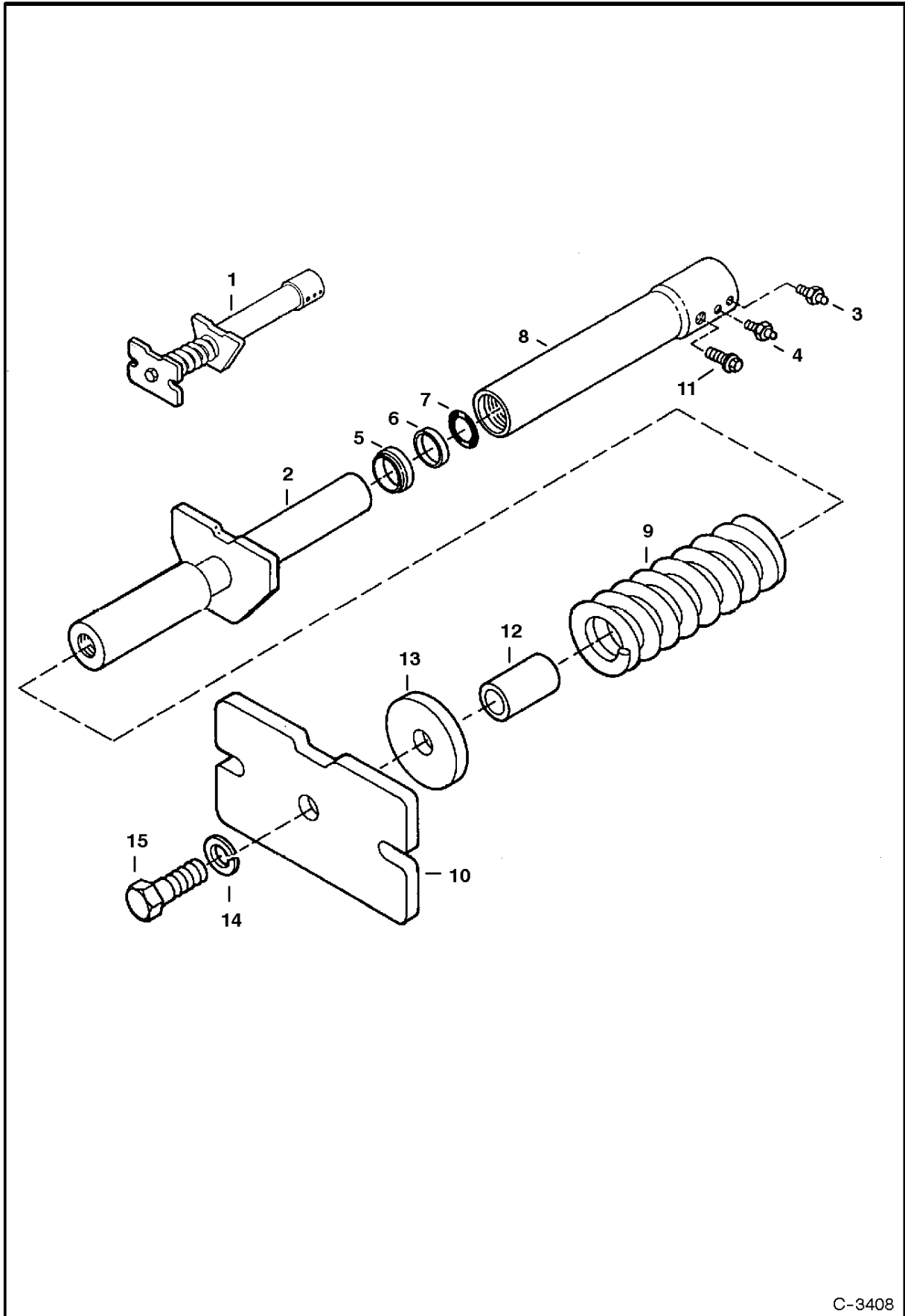


TS-1348

UNDERCARRIAGE

Ref.N°	Part N°	Description	Remarks	Serial N°	Qty.
1	NAP	TRACK FRAME	order 6809706, (2) 6677665 motor, (2) 6809705 sprockets, (24) 55CM-1235 screws and (24) 55CM-1225 screws - Was 6597909 [A]	& Below	1
1	6809706	TRACK FRAME		& Above	1
2	6535548	COVER			1
3	6655124	SWING BEARING	Assy. - 96 Teeth on Gear		1
4	6628410	FRONT IDLER	Front - See Page FRONT IDLER(3)		2
5	7CM-1280	BOLT			16
6		TRACK	See Page RECOIL SPRING(1)		2
7	51DM-12	NUT			16
8	55CM-1235	BOLT		& Below	18
8	55CM-1235	BOLT		& Above	24
9	6597368	RECOIL SPRING	Rubber Tracks - See Page RECOIL SPRING(1)		2
9	6628094	RECOIL SPRING	Steel Tracks - See Page RECOIL SPRING(2)		2
10	6652970	GREASE ZERK			2
11	6596689	COVER			2
12	26GM-10030	SCREW			20
13	6811940	SPROCKET	21 Tooth - 9 hole - Was 6587310 [A]	& Below	2
13	6811939	SPROCKET	12 hole	& Above	2
14	29CM-1030	SCREW			4
15	6534234	SLIDE PLATE			2
16	6596396	PLATE	Guide - used with steel tracks only		4
17		ROLLER	Track - See Page TRACK ROLLER(4) & TRACK ROLLER(5)		6
18	6597346	COVER			1
19	51DM-10	NUT			4
20	26GM-10020	SCREW	Self Tapping		12
21	6596723	COVER			2
22	6586494	PIN	Alignment - Service Tool for Aligning Swing Bearing when Upperstructure has been Removed from Undercarriage		3
23	6535902	BOLT	Alignment - Service Tool for Aligning Swing Bearing when Upperstructure has been Removed from Undercarriage		3
24		MOTOR	Drive - See Page TRAVEL MOTOR(4)		2
25	6596688	PLATE	Drive Motor Mount - Weld-on - 9 - hole		2
26	18EM-1224	WASHER		& Below	18
26	18EM-1224	WASHER		& Above	24
27	55CM-1225	BOLT		& Below	18
27	55CM-1225	BOLT		& Above	24

RECOIL SPRING
(Rubber Tracks)

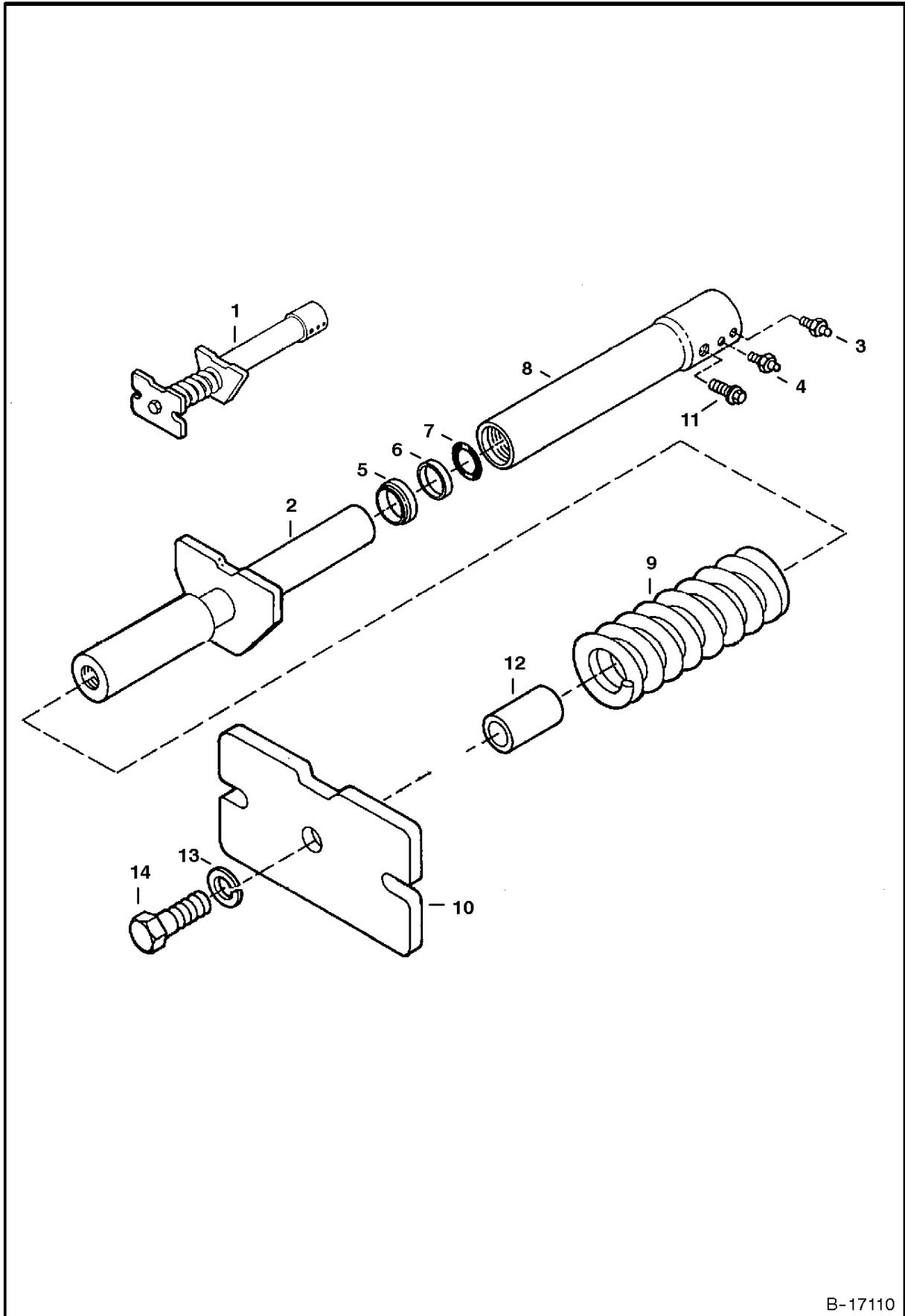


C-3408

RECOIL SPRING

Ref.N°	Part N°	Description	Remarks	Serial N°	Qty.
1	6597368	RECOIL SPRING	W/Ref. RECOIL SPRING(2)-RECOIL SPRING(15)		2
2	6595965	SHAFT			1
3	6645812	BLEEDER			1
4	6655752	GREASE ZERK	Grease		1
5	6665086	SEAL			1
6	80K-222	BACK-UP RING			1
7	58K-222	O-RING			1
8	6595969	CYLINDER			1
9	6536438	SPRING			1
10	6811048	PLATE	Was 6595973 [A]		1
11	26GM-10020	SCREW			1
12	6595972	SPACER			1
13	6597318	SPACER			1
14	1EM-240	WASHER			1
15	1CM-2470	BOLT			1

RECOIL SPRING
(Steel Tracks)

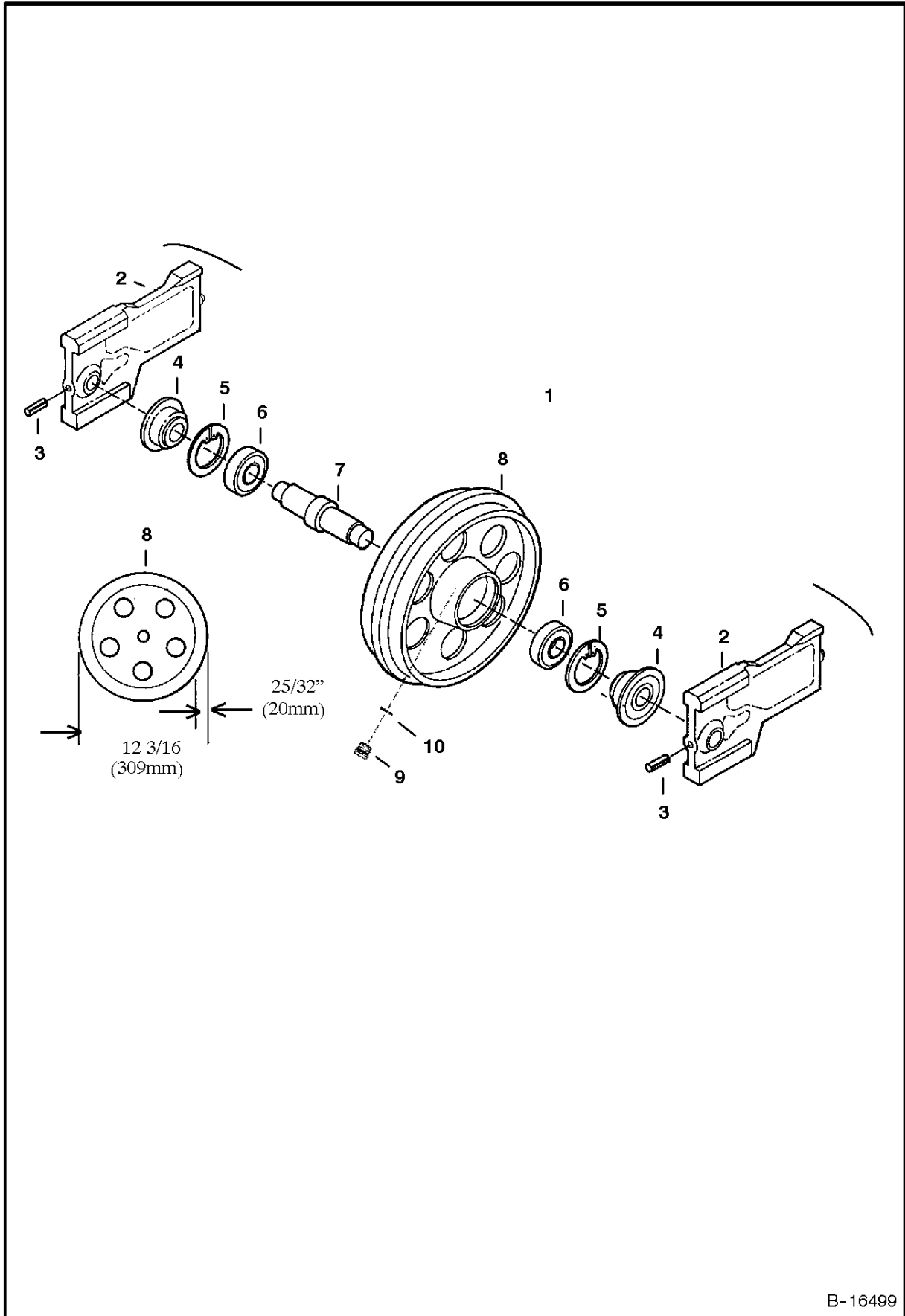


B-17110

RECOIL SPRING

Ref.N°	Part N°	Description	Remarks	Serial N°	Qty.
1	6628094	RECOIL SPRING	W/Ref. RECOIL SPRING(2)RECOIL SPRING(14)		2
2	6595965	SHAFT			1
3	6645812	BLEEDER			1
4	6655752	GREASE ZERK	Grease		1
5	6665086	SEAL			1
6	80K-222	BACK-UP RING			1
7	58K-222	O-RING			1
8	6595969	CYLINDER			1
9	6536438	SPRING			1
10	6811048	PLATE	Was 6595973 [A]		1
11	26GM-10020	SCREW			1
12	6595972	SPACER			1
13	1EM-240	WASHER			1
14	1CM-2470	BOLT			1

FRONT IDLER
(S/N 2323 11037 & Abv. and 2324 11020 & Above)

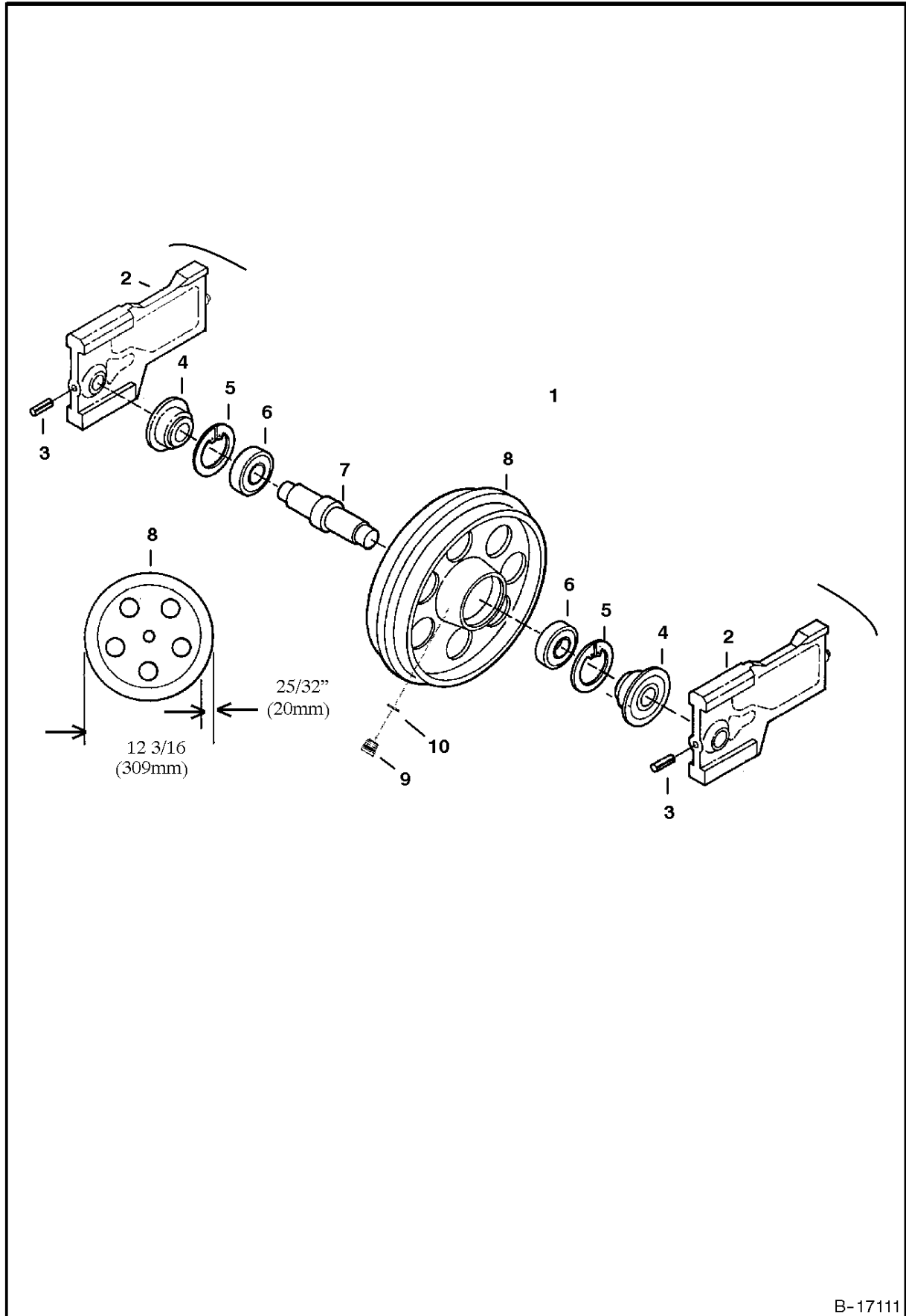


B-16499

FRONT IDLER

Ref.N°	Part N°	Description	Remarks	Serial N°	Qty.
1	6807909	IDLER ASSY	Assy. - Ref. FRONT IDLER(2)-FRONT IDLER(8) - rubber track - Was 6628410 [A]		2
1	6807924	IDLER ASSY	assy. - Ref. FRONT IDLER(2)-FRONT IDLER(8) - steel track		2
2	6596481	BLOCK			2
3	2JM-1060	PIN			2
4	6725082	SEAL	Was 6655061[A]		2
5	7JM-72	SNAP RING			2
6	6655856	BEARING			2
7	6588997	SHAFT			1
8	6807910	IDLER	W/12 -3/16"(309mm) diameter - (check outer diameter before ordering) - rubber track - Was 6589000 [A]		1
8	6807911	IDLER	W/11-3/4" diameter - steel track		1
9	90KV-3	PLUG	W/Ref. FRONT IDLER(10)		1
10	95K-4	O-RING			1

FRONT IDLER
(S/N 2323 11036 & Bel. and 2324 11019 & Bel.)



B-17111

**Thank you very much
for your reading.**

**Please click here and go
back to our website.**

**Then, you can download
the complete manual
instantly.**

No waiting.

Have questions.

Please write to me.

**All the problems will be answered
within 12 hours.**

aservicemanuapdf@yahoo.com