

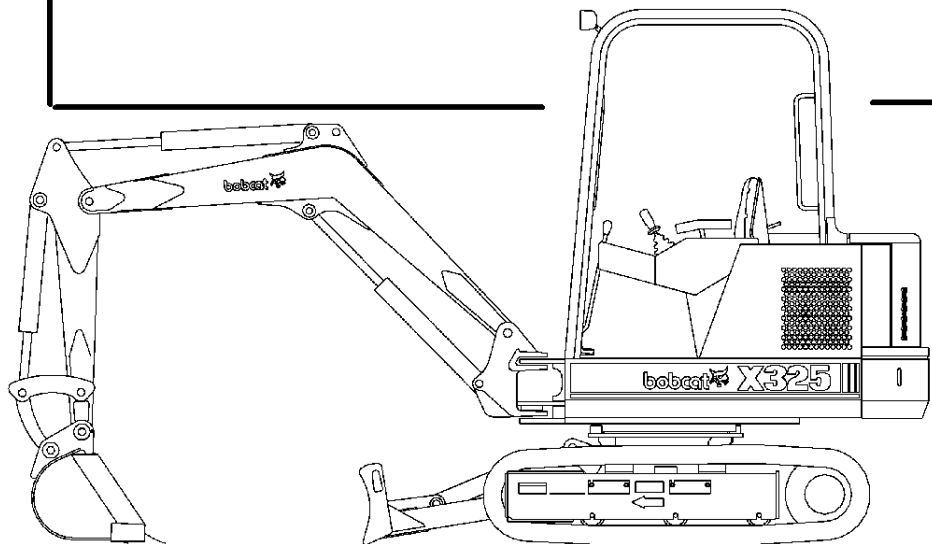
325



Bobcat®

Parts Manual

S/N 514011001-514012999



6724456 (12-00) Revised (12-01)

Printed in U.S.A.

© Bobcat Company 2001

Our customer service email: aservicemanualpdf@yahoo.com

325 ALPHABETICAL INDEX

ACCUMULATOR VALVE	112	KEY	16, 156
ADAPTER, CONNECTOR	100	KIT, BREAKER MOUNTING ..	227, 231, 234
ADHESIVE	302	KIT, DECAL	250
AIR CLEANER	199	KIT, TANK HEATER	289, 290
ALTERNATOR	160	KIT, WORK LIGHT	294
ANTI-FREEZE	302	LATCH	26, 34, 38
ARM REST	68, 70	LEVER, BLADE	72
AUGER	216	LEVER, SPEED CONTROL	72
BEARING, SWING	46	LIGHT SWITCH	156
BLADE	66	LIGHT	28
BLADE CYLINDER	66	LOCK	16
BLOCK, FUSE	156	LUBRICANT	302
BREAKER	262, 268	MANIFOLD	187
BREAKER MOUNT	227, 231	MOTOR, SWING	98, 122
BREAKER MOUNTING KIT	234	MOTOR, TRAVEL	114
BUCKET	236, 237	MOUNT, SEAT	68
CAB	18	OIL,	302
CAB DOOR	38	PAINT	302
CAB	26	PEDAL	78
CABLE, BLADE	72	POLISH	302
CANOPY	24	PUMP, FUEL	189, 190
CHARGE KIT, BREAKER	243, 244	PUMP, INJECTION	189, 190
CHECK VALVE	125	PUMP, OIL	178
CONSOLE	68, 70	PUMP, WATER	185
CUTTER ASSY, LINE CUTTER	270	REGULATOR	160
CYLINDER, ARM	144	ROLLER	53, 54
CYLINDER, BLADE	66	SCREEN	194
CYLINDER, BOOM	148	SEALANT	302
CYLINDER, BUCKET	150	SEAT (STANDARD)	44
CYLINDER, GAS SPRING	70	SEAT BELT	44
CYLINDER, SWING	152	SELECTOR VALVE	100, 126
DECALS	250, 258	SHIELD, BLADE CYL.	98
DOME LIGHT	26	SIGHT GAUGE	194
DOOR, CAB	38	STARTER	162
FAN SWITCH	42	SWING BEARING	46
FILTER, ENG. OIL	175	SWING CYLINDER	152
FILTER, FUEL	194	SWING MOTOR	98, 122
FLOOR PLATE	68, 78	SWITCH, FAN	42
FLOORMAT	68	SWITCH, LIGHT	156
FLOORPLATE	76	SWITCH, WIPER/WASHER	26
FRAME, TRACK	46	SWIVEL JOINT	106
FUEL FILTER	194	TANK HEATER	289, 290
FUEL TANK	16	TANK, FUEL	16
FUSE BLOCK	156	TANK, HYDRAULIC	16, 194
FUSE HOLDER	26	THERMOSTAT	188
GAS SPRING	70	TOOTH, BUCKET	236
GASKET KIT, ENGINE	196, 198	TRACK FRAME	46
GLASS	26, 34, 38	TRACK ROLLER	53, 54
GLOW PLUG	191	TRACK, STEEL	58
HEATER	42	TRAVEL MOTOR	96, 114
HEATER HOSE	18	VALVE, ACCUMULATOR	112
HINGE	38	VALVE, SELECTOR	126
HOSE, HEATER	18	WASHER, WINDOW	18
HYD/HYDRO FLUID	302	WINDOW, R.H.	34
HYDRAULIC TANK	16, 194	WIPER/WASHER SWITCH	26
INJECTION NOZZLES	191	WORK LIGHT KIT	294
JOYSTICK	108, 110		

325 CONTENTS

MAIN FRAME	12-45
UPPERSTRUCTURE & ENGINE COVERS	12-13
ENGINE COVERS	14-15
SIDE COVERS & TANKS	16-17
CAB & MOUNTING	18-21
CAP INSULATION	22-23
CANOPY & MOUNTING	24-25
OPERATOR CAB	26-41
HEATER	42-43
SEAT	44-45
UNDERCARRIAGE	46-69
UNDERCARRIAGE	46-47
RECOIL SPRING	48-51
FRONT IDLER	52-59
TRACK ROLLER	60-67
TRACKS	68-69
WORK EQUIPMENT	70-77
ARM & BUCKET LINK	70-71
BOOM	72-73
SWING FRAME	74-75
BLADE	76-77
CONTROLS	78-89
R.H. CONTROL CONSOLE & FLOORBOARDS	78-79
L.H. CONTROL CONSOLE	80-81
BLADE & SPEED CONTROLS	82-85
TRAVEL CONTROLS	86-87
BOOM SWING & AUXILIARY CONTROLS	88-89
HYDRAULIC CIRCUITRY	90-171
HYDRAULIC CIRCUITRY	90-115
SWIVEL JOINT	116-117
R.H. JOYSTICK CONTROLS	118-119
L.H. JOYSTICK CONTROLS	120-121
ACCUMULATOR VALVE	122-123
TRAVEL MOTOR	124-129
MOUNT ASSY	130-131
SWING MOTOR	132-133
RELIEF VALVE	134-135
CHECK VALVE	136-137
SELECTOR VALVE	138-139
GEAR PUMP	140-141
CONTROL VALVE ASSY. (3 SPOOL)	142-143
VALVE SECTION (BLADE & BOOM SWING)	144-145
VALVE SECTION (SWING MOTOR)	146-147
RELIEF VALVE (3 & 6 SPOOL)	148-149
CONTROL VALVE ASSY. (6 SPOOL)	150-151
VALVE SECTION (R.H. TRAVEL & L.H. TRAVEL)	152-153
VALVE SECTION (AUXILIARY)	154-155
VALVE SECTION (BOOM, BUCKET & ARM)	156-157
RELIEF VALVE (6 SPOOL)	158-159
ARM CYLINDER	160-161
BLADE CYLINDER	162-163
BOOM CYLINDER	164-165
BUCKET CYLINDER	166-167
SWING CYLINDER	168-169
LIFTING CYLINDER	170-171
ELECTRICAL SYSTEM	172-179
ELECTRICAL SYSTEMS	172-175
ALTERNATOR	176-177
STARTER	178-179

325 CONTENTS (Cont'd)

POWER UNIT	180-231
AIR CLEANER & MUFFLER MOUNTING	180-181
RADIATOR & MOUNTING	182-183
ENGINE MOUNTING	184-185
ALTERNATOR MOUNTING & RADIATOR HOSES	186-187
ROCKER ARM COVER	188-189
VALVES & ROCKER ARM	190-191
CYLINDER HEAD	192-193
OIL PAN	194-195
GEARCASE	196-197
CRANKCASE	198-199
PISTON & CRANKSHAFT	200-201
CAMSHAFT	202-203
FUEL CAMSHAFT	204-205
GOVERNOR	206-207
SPEED CONTROL PLATE	208-209
WATER PUMP	210-211
ENGINE STOP LEVER	212-213
MANIFOLDS	214-215
WATER FLANGE & THERMOSTAT	216-217
INJECTION PUMP	218-221
INJECTOR NOZZLES	222-223
FUEL SYSTEM & TANKS	224-225
UPPER GASKET KIT	226-227
LOWER GASKET KIT	228-229
AIR CLEANER	230-231
ACCESSORIES	232-355
AUGER	235-248
AUGER MOUNTING KIT	249-250
AUGER - HYDRAULIC MOTOR	251-256
AUXILIARY RELIEF KIT	257-258
BELLY PAN KIT	259-260
BREAKER MOUNTING KIT	261-268
BREAKER MOUNTING PACK	269-270
BUCKET	271-274
BUCKET TEETH	275-276
CAB DOOR KIT	277-278
CAB ENCLOSURE	279-280
CAB OR CANOPY (FOPS KIT)	281-282
CHARGE KIT	283-286
CLAMP	287-288
COMPACTOR	289-290
DECALS	291-300
GRAPPLE	301-302
HYDRAULIC BREAKER	303-316
HYDRAULIC BREAKER TOOLS	317-320
ISO/STD CONVERSION KIT	321-322
MOTION ALARM KIT	323-324
OPERATOR HANDBOOK KIT	325-326
RAINGUARD KIT	327-328
RENTAL KIT	329-330
SELECTOR VALVE ASSY	331-332
SPECIAL APPLICATION KIT	333-336
TANK HEATER KIT	337-340
TRACK KIT	341-344
WIDE LINK KIT	345-346
WORK LIGHT KIT	347-348
X-CHANGE [™]	349-350
X-CHANGE [™] BREAKER MOUNTNG KIT	351-352
X-CHANGE [™] KIT (BOLT-ON)	353-354
BULK ITEMS	355-356
NUMERICAL	357-407
NUMERICAL	357-407

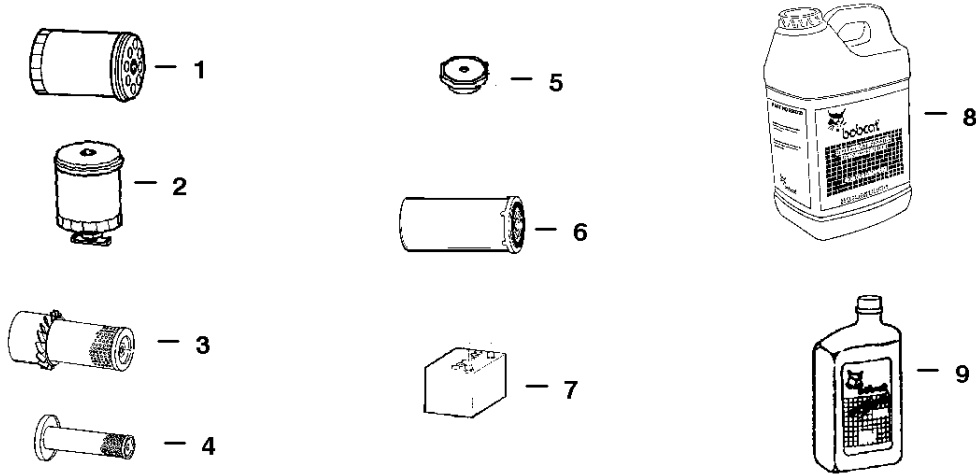
325 CONTENTS

MAIN FRAME	12-45
UPPERSTRUCTURE & ENGINE COVERS	12-13
ENGINE COVERS	14-15
SIDE COVERS & TANKS	16-17
CAB & MOUNTING	18-21
CAP INSULATION	22-23
CANOPY & MOUNTING	24-25
OPERATOR CAB	26-41
HEATER	42-43
SEAT	44-45
UNDERCARRIAGE	46-69
UNDERCARRIAGE	46-47
RECOIL SPRING	48-51
FRONT IDLER	52-59
TRACK ROLLER	60-67
TRACKS	68-69
WORK EQUIPMENT	70-77
ARM & BUCKET LINK	70-71
BOOM	72-73
SWING FRAME	74-75
BLADE	76-77
CONTROLS	78-89
R.H. CONTROL CONSOLE & FLOORBOARDS	78-79
L.H. CONTROL CONSOLE	80-81
BLADE & SPEED CONTROLS	82-85
TRAVEL CONTROLS	86-87
BOOM SWING & AUXILIARY CONTROLS	88-89
HYDRAULIC CIRCUITRY	90-171
HYDRAULIC CIRCUITRY	90-115
SWIVEL JOINT	116-117
R.H. JOYSTICK CONTROLS	118-119
L.H. JOYSTICK CONTROLS	120-121
ACCUMULATOR VALVE	122-123
TRAVEL MOTOR	124-129
MOUNT ASSY	130-131
SWING MOTOR	132-133
RELIEF VALVE	134-135
CHECK VALVE	136-137
SELECTOR VALVE	138-139
GEAR PUMP	140-141
CONTROL VALVE ASSY. (3 SPOOL)	142-143
VALVE SECTION (BLADE & BOOM SWING)	144-145
VALVE SECTION (SWING MOTOR)	146-147
RELIEF VALVE (3 & 6 SPOOL)	148-149
CONTROL VALVE ASSY. (6 SPOOL)	150-151
VALVE SECTION (R.H. TRAVEL & L.H. TRAVEL)	152-153
VALVE SECTION (AUXILIARY)	154-155
VALVE SECTION (BOOM, BUCKET & ARM)	156-157
RELIEF VALVE (6 SPOOL)	158-159
ARM CYLINDER	160-161
BLADE CYLINDER	162-163
BOOM CYLINDER	164-165
BUCKET CYLINDER	166-167
SWING CYLINDER	168-169
LIFTING CYLINDER	170-171
ELECTRICAL SYSTEM	172-179
ELECTRICAL SYSTEMS	172-175
ALTERNATOR	176-177
STARTER	178-179

325 CONTENTS (Cont'd)

POWER UNIT	180-231
AIR CLEANER & MUFFLER MOUNTING	180-181
RADIATOR & MOUNTING	182-183
ENGINE MOUNTING	184-185
ALTERNATOR MOUNTING & RADIATOR HOSES	186-187
ROCKER ARM COVER	188-189
VALVES & ROCKER ARM	190-191
CYLINDER HEAD	192-193
OIL PAN	194-195
GEARCASE	196-197
CRANKCASE	198-199
PISTON & CRANKSHAFT	200-201
CAMSHAFT	202-203
FUEL CAMSHAFT	204-205
GOVERNOR	206-207
SPEED CONTROL PLATE	208-209
WATER PUMP	210-211
ENGINE STOP LEVER	212-213
MANIFOLDS	214-215
WATER FLANGE & THERMOSTAT	216-217
INJECTION PUMP	218-221
INJECTOR NOZZLES	222-223
FUEL SYSTEM & TANKS	224-225
UPPER GASKET KIT	226-227
LOWER GASKET KIT	228-229
AIR CLEANER	230-231
ACCESSORIES	232-355
AUGER	235-248
AUGER MOUNTING KIT	249-250
AUGER - HYDRAULIC MOTOR	251-256
AUXILIARY RELIEF KIT	257-258
BELLY PAN KIT	259-260
BREAKER MOUNTING KIT	261-268
BREAKER MOUNTING PACK	269-270
BUCKET	271-274
BUCKET TEETH	275-276
CAB DOOR KIT	277-278
CAB ENCLOSURE	279-280
CAB OR CANOPY (FOPS KIT)	281-282
CHARGE KIT	283-286
CLAMP	287-288
COMPACTOR	289-290
DECALS	291-300
GRAPPLE	301-302
HYDRAULIC BREAKER	303-316
HYDRAULIC BREAKER TOOLS	317-320
ISO/STD CONVERSION KIT	321-322
MOTION ALARM KIT	323-324
OPERATOR HANDBOOK KIT	325-326
RAINGUARD KIT	327-328
RENTAL KIT	329-330
SELECTOR VALVE ASSY	331-332
SPECIAL APPLICATION KIT	333-336
TANK HEATER KIT	337-340
TRACK KIT	341-344
WIDE LINK KIT	345-346
WORK LIGHT KIT	347-348
X-CHANGE [™]	349-350
X-CHANGE [™] BREAKER MOUNTNG KIT	351-352
X-CHANGE [™] KIT (BOLT-ON)	353-354
BULK ITEMS	355-356
NUMERICAL	357-407
NUMERICAL	357-407

MAINTENANCE ITEMS MODEL 325



Ref.	Part Number	Description	Remarks	Page
1	3974896	ENGINE OIL FILTER		197
2	6667352	FUEL FILTER		224
3	6598492	AIR CLEANER FILTER (Primary)		231
4	6598362	AIR CLEANER FILTER (Secondary)		231
5	3974310	RADIATOR CAP		182
6	6653336	HYDRAULIC FILTER		108
7	6670251	BATTERY		174
	6665093	BATTERY (Mixon)		174
8	6563328	HYDRAULIC/HYDROSTATIC FLUID - 2-2 1/2 (5 Gallons)		355
	6563329	HYDRAULIC/HYDROSTATIC FLUID 30 Gallon		355
	6563330	HYDRAULIC/HYDROSTATIC FLUID 55 Gallon		355
		(HYDRAULIC -RESERVOIR CAPACITY)	10.5 GALS. (40 L)	
9	6657299	MOTOR OIL	15W40 CE/SG -1 Qt.	355
	6724558	MOTOR OIL	15W40 CE/SG -1 Gallon	355
	6674204	MOTOR OIL	15W40 CE/SG - 2.5 Gal.	355
	6657301	MOTOR OIL	10W30 CE/SG -1 Qt.	355
	6724557	MOTOR OIL	10W30 CE/SG -1 Gallon	355
	6674205	MOTOR OIL	10W30 CE/SG - 2.5 Gal.	355
	6657303	MOTOR OIL	30 CE/SG -1 Qt.	355
	6724559	MOTOR OIL	30 CE/SG -1 Gallon	355
	6674206	MOTOR OIL	30 CE/SG -2.5 Gal.	355
		(ENGINE OIL W/FILTER CAPACITY)	9.0 QTS. (8,5 L)	

GENERAL INFORMATION

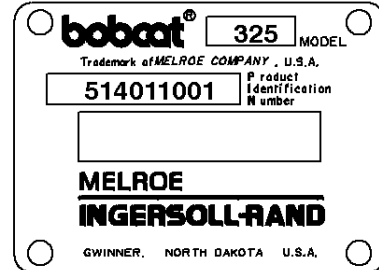
When using the machine serial number, use the complete number.

Some Serial Number breaks are not available at time of printing. These are listed as & Below or & Above.

The number shown in the quantity column in this manual is the number of parts needed for the illustration on the page. For some parts an "x" will be shown in the quantity column. This "x" indicates that the quantity to be used is "As Needed".

When references L.H. and R.H. are used in this manual, it is done from the operator's seat in the forward operating position.

Some of the illustrations and information found in this parts manual were supplied to Bobcat by machine component companies.



ABBREVIATIONS & SYMBOLS

SALES = Order from Gwinner Sales Department

NSS = Not Serviced Separately

NAP = Not Available as Parts

*** = Changed or Added Sections, Pages or Part Numbers**

Disposition Code Definition (Found in the Remarks Column)

[A] = Use Up

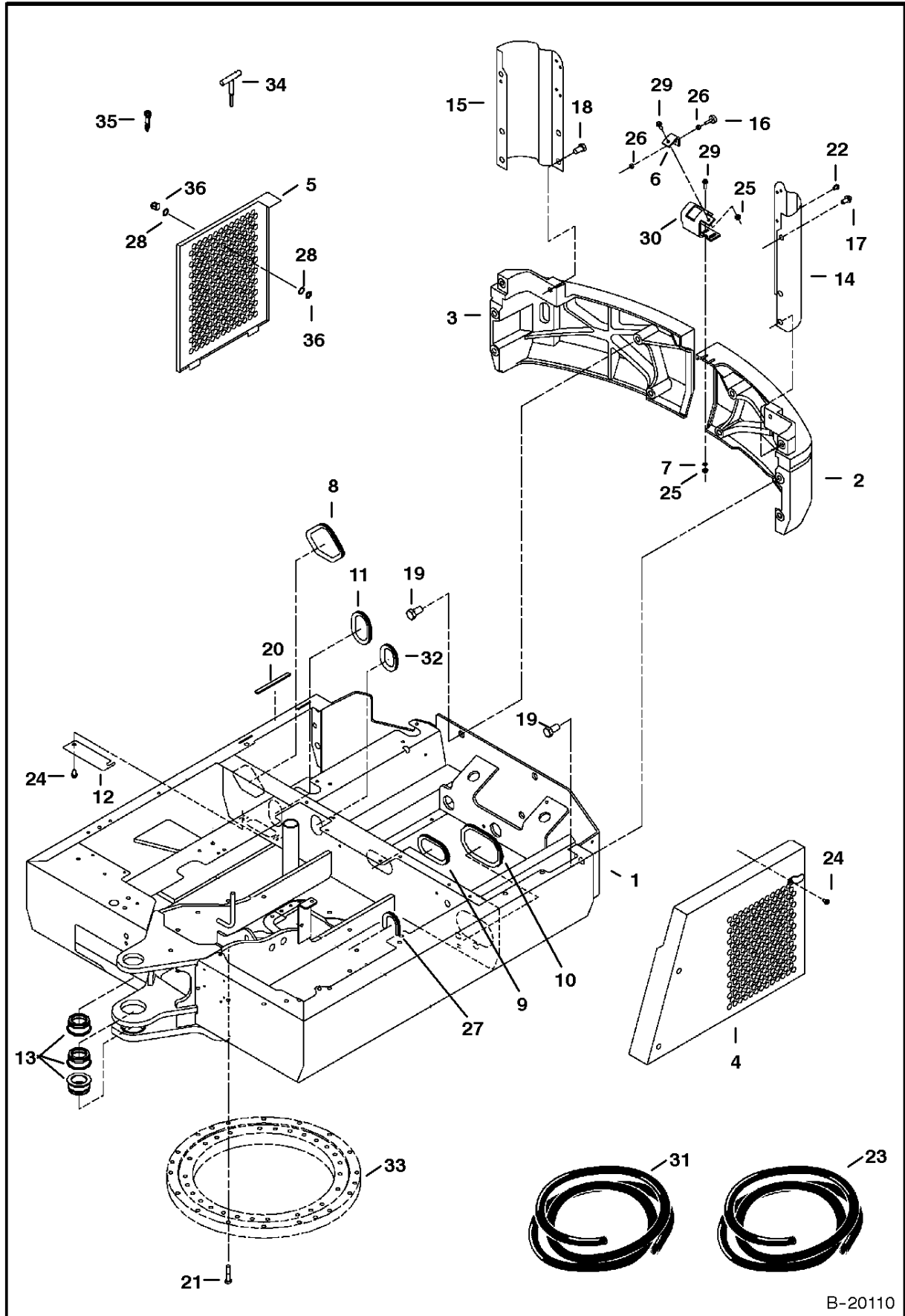
[B] = Use Up on Other Application (See PNI)

[C] = File PDR Report With Bobcat Parts Sales

[D] = Part Number Error

Explications en francais	Grid Nb	3
Erklärungen auf deutsch	Grid Nb	4
Spiegazioni in italiano	Grid Nb	5
Explicaciones en espanol	Grid Nb	6
Verklaring in het Nederlands	Grid Nb	7

UPPERSTRUCTURE & ENGINE COVERS

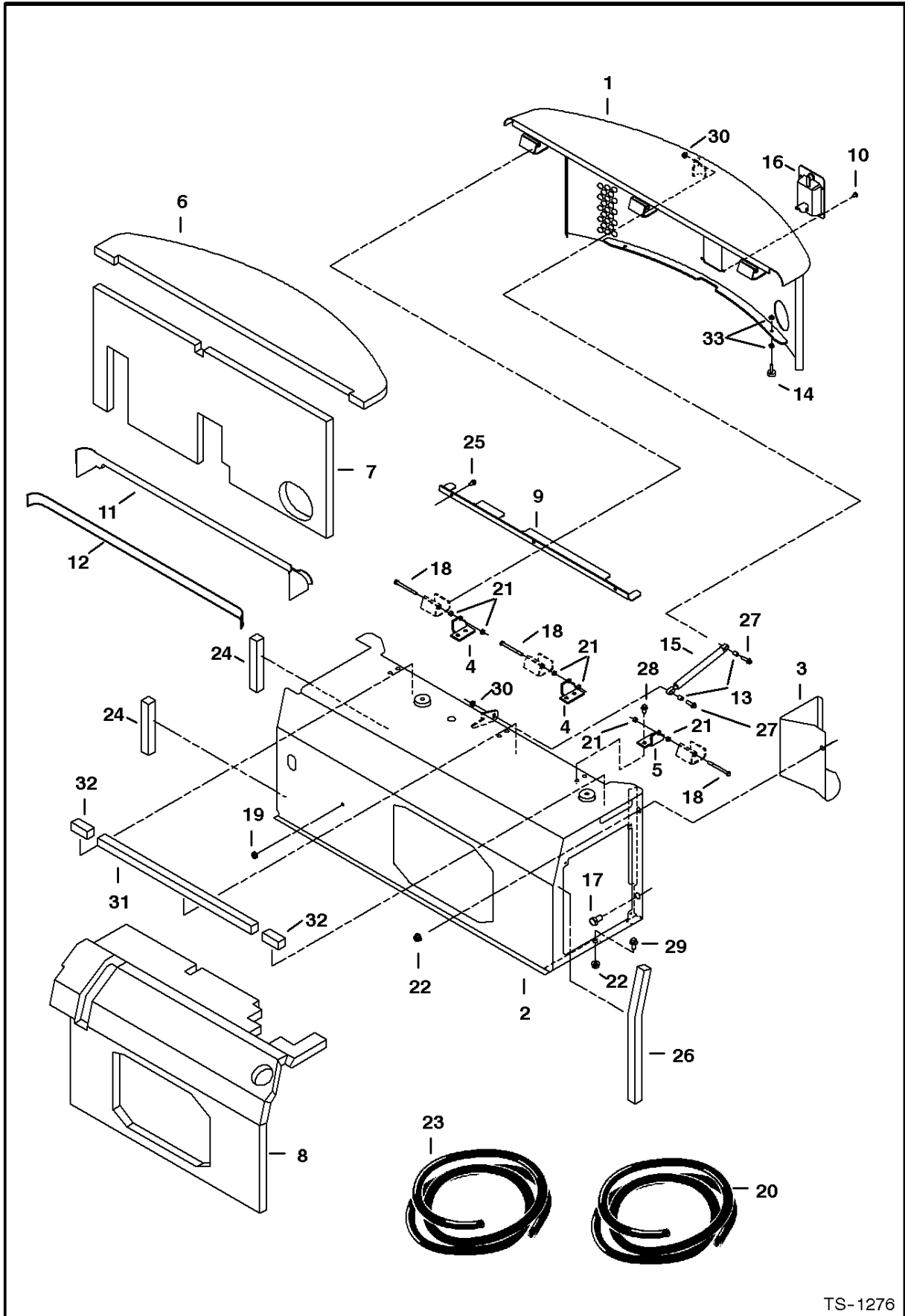


B-20110

UPPERSTRUCTURE & ENGINE COVERS

Ref.N°	Part N°	Description	Remarks	Serial N°	Qty.
1	6596092	FRAME	Upperstructure	11001 - 12999	1
2	6588239	COUNTERWEIGHT	L.H.		1
3	6588241	COUNTERWEIGHT	R.H.		1
4	6588611	COVER	Side, L.H.		1
5	6589626	COVER	Side, R.H. - Locking		1
6	6804078	ANGLE	Was 6588539 [A]		1
7	10EM-80	WASHER			2
8	NAP	MOULDING	16' (391mm) long Order Ref. UPPERSTRUCTURE & ENGINE COVERS(31)		1
9	NAP	MOULDING	12'(308mm) long - Order Ref. UPPERSTRUCTURE & ENGINE COVERS(31)		1
10	NAP	MOULDING	18'(454mm) long - Order Ref. UPPERSTRUCTURE & ENGINE COVERS(31)		1
11	NAP	MOULDING	11'(280mm) long Order Ref. UPPERSTRUCTURE & ENGINE COVERS(31)		2
12	6596723	COVER	Was 6539292 [A]		1
13	6589322	BUSHING			3
14	6587895	BUMPER	L.H.		1
15	6588131	BUMPER	R.H.		x
16	6655399	BUMPER			1
17	29CM-1225	SCREW			2
18	1CM-1630	BOLT			4
19	1CM-2040	BOLT			8
20	NAP	INSULATION	6' (152mm) long - Order Ref. UPPERSTRUCTURE & ENGINE COVERS(23)		1
21	7CM-1260	SCREW			16
22	26GM-8016	SCREW			4
23	6632217	SEAL	Bulk - Sold Per Foot		x
24	26GM-10020	SCREW			8
25	43DM-8	NUT	Was 42DM-8 [B]		2
26	61D-5	NUT			2
27	NAP	MOULDING	7'(178mm) long - Order Ref. UPPERSTRUCTURE & ENGINE COVERS(31)		1
28	6536802	WASHER			2
29	29CM-825	SCREW			3
30	6589060	BRACKET			1
31	6654139	MOULDING	Bulk - Sold Per Foot		x
32	NAP	MOULDING	8' (196mm) long - Order Ref. UPPERSTRUCTURE & ENGINE COVERS(31)		x
33	6655124	SWING BEARING	See Page UNDERCARRIAGE(1)		1
34	6586494	PIN	Alignment - Service Tool for Aligning Swing Bearing When a Disassembled Upperstructure has been removed from Under- Carriage.		3
35	6535902	BOLT	Alignment - Service Tool for Aligning Swing Bearing when an Assembled Upperstructure has been removed from Under- Carriage		3
36	6661695	LOCK ASSY.			1
36	6587458	KEY SET			1

ENGINE COVERS

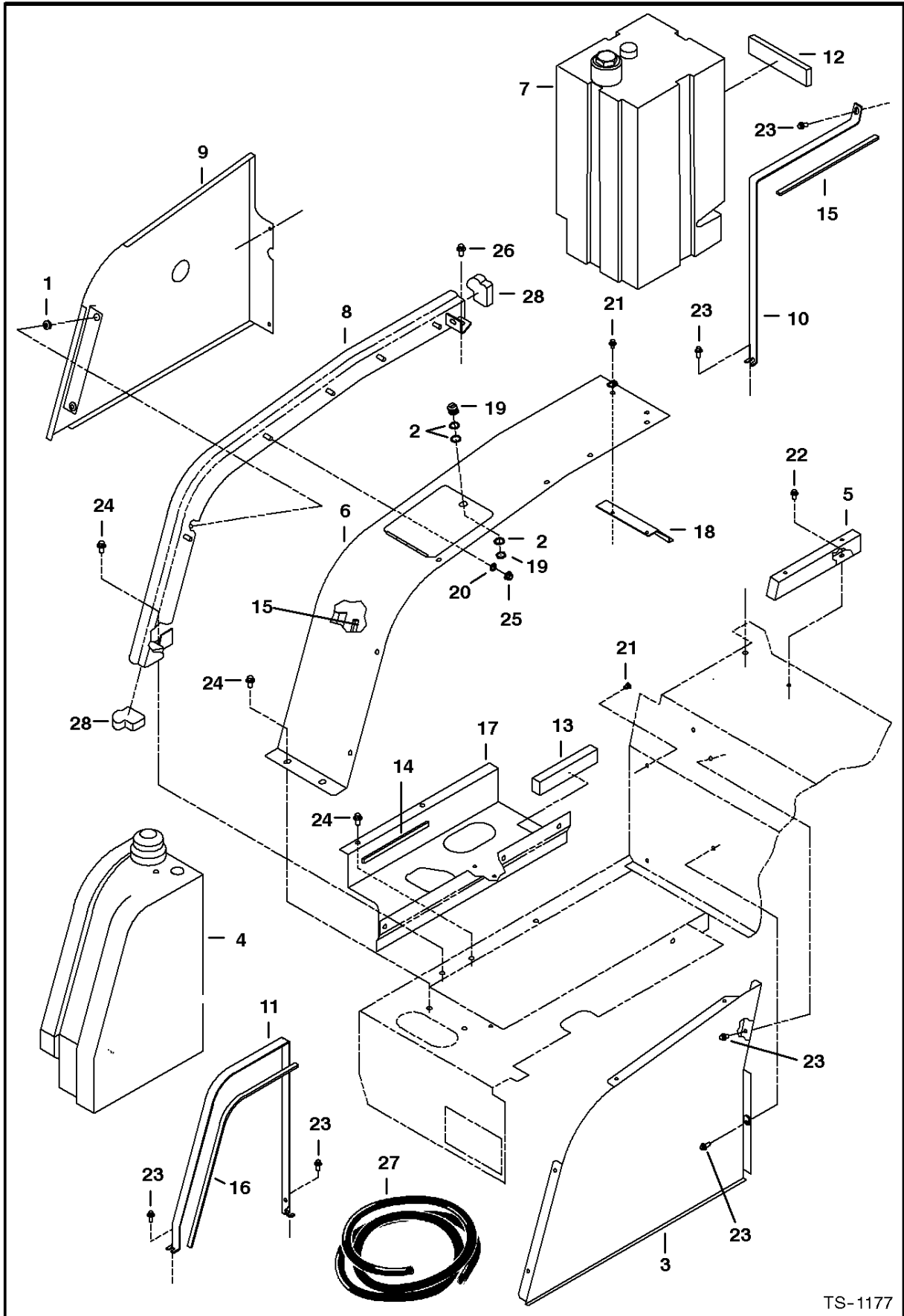


TS-1276

ENGINE COVERS

Ref.N°	Part N°	Description	Remarks	Serial N°	Qty.
1	6596087	COVER	Engine		1
2	6596232	COVER	Front Engine		1
3	6596086	TOOL BOX			1
4	6589033	ANGLE			2
5	6589032	ANGLE(L.H.081<com38-}H~10{M			1
6	6588615	INSULATION			1
7	6596251	INSULATION			1
8	6596247	INSULATION			1
9	6588648	SUPPORT(081;com3;)}H~10{M			1
10	6589675	SCREW			4
11	6588070	COVER(0818com3KB}H~10{M			1
12	NAP	TAPE	Double Backed - For Attaching Ref. ENGINE COVERS(25) to the Cab/Canopy - 48'(1220mm) long - Order Ref. ENGINE COVERS(20)		1
13	6588293	BUSHING			2
14	6655399	BUMPER			2
15	6664443	CYLINDER	Gas Spring		1
16	6674239	LATCH	Was 6664447[A]		1
16	6587458	KEY SET			1
17	1CM-1630	BOLT			4
18	1CM-890	BOLT			3
19	515069	GROMMET			1
20	6900669	TAPE	Bulk - Sold Per Foot - Was 6665212[A]		x
21	4DM-8	NUT	Was 1DM-8 [A]		6
22	43DM-12	NUT	Was 42DM-12 [B]		6
23	6554274	INSULATION	Bulk - Sold Per Foot		x
24	NAP	INSULATION	16' (406mm) long - Order Ref. ENGINE COVERS(23)		2
25	26GM-8016	SCREW			5
26	NAP	INSULATION	20'(500mm) long - Order Ref. ENGINE COVERS(23)		1
27	29CM-830	SCREW			2
28	26GM-10020	SCREW	Was 29CM-1020 [B]		8
29	29CM-1225	SCREW			4
30	43DM-8	NUT	Was 43DM-8 [B]		4
31	NAP	INSULATION	28'(710mm) long - Order Ref. ENGINE COVERS(23)		1
32	NAP	INSULATION	3'(75mm) long - Order Ref. ENGINE COVERS(23)		2
33	61D-5	NUT			4

SIDE COVERS & TANKS

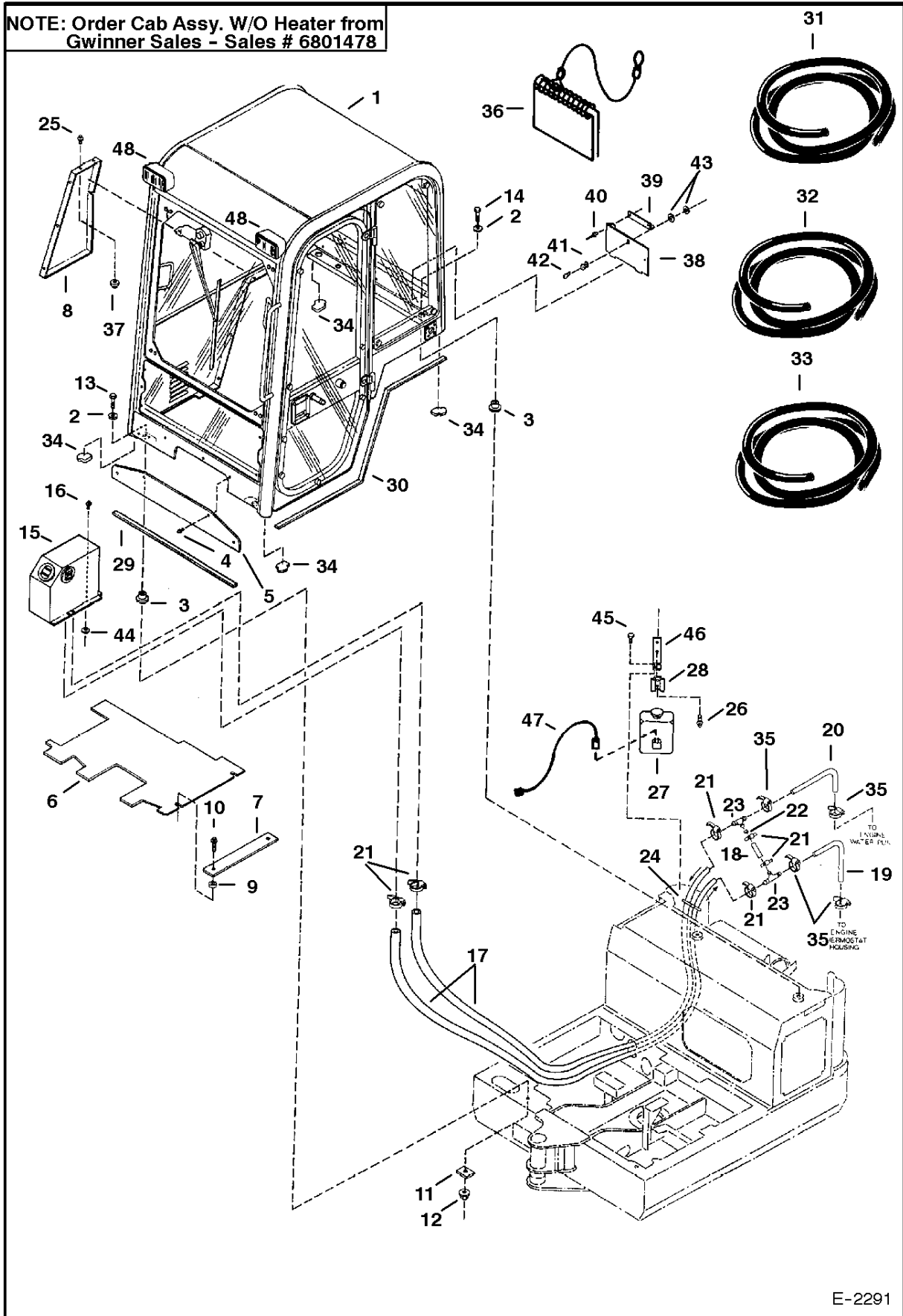


SIDE COVERS & TANKS

Ref.N°	Part N°	Description	Remarks	Serial N°	Qty.
1	515069	GROMMET			2
2	6536802	WASHER			3
3	6587544	PLATE			1
4	6589025	TANK	Fuel - See Page FUEL SYSTEM & TANKS(4)		1
5	6587552	BRACKET			1
6	NAP	COVER	Order 6806889 - Was 6587553[A]		1
6	6806889	COVER	1 piece		1
7	6588490	TANK	Hydraulic - See Page FUEL SYSTEM & TANKS(4)		1
8	NAP	TUBE	Order 6806889 Was 6588485[A]		1
9	6588491	PLATE	Side Cover		1
10	6588664	STRAP	Hydraulic Tank		1
11	6588783	STRAP	Fuel Tank		1
12	NAP	FOAM	order 6588939 - Was 6588938 [A]		1
13	6588939	FOAM			1
14	NAP	FOAM	9'(230mm) long - Order Ref. SIDE COVERS & TANKS(27)		1
15	NAP	FOAM	14'(350mm) long - Order Ref. SIDE COVERS & TANKS(27)		2
16	NAP	FOAM	24'(620mm) long - Order Ref. SIDE COVERS & TANKS(27)		1
17	6587546	PAN			1
18	6588933	BRACKET			1
19	6661695	LOCK ASSY.			1
19	6587458	KEY SET			1
20	15EM-120	WASHER			6
21	26GM-8013	SCREW	Was 26GM-8012 [A]		10
22	29CM-816	BOLT			2
23	26GM-8016	SCREW			5
24	26GM-10020	SCREW			8
25	43DM-10	NUT	Was 42DM-10 [B]		6
26	29CM-1020	BOLT			1
27	6632217	SEAL	Bulk - Order Per Foot		x
28	6589660	FOAM			2
29	26GM-8016	SCREW			6

CAB & MOUNTING

NOTE: Order Cab Assy. W/O Heater from Gwinner Sales - Sales # 6801478



E-2291

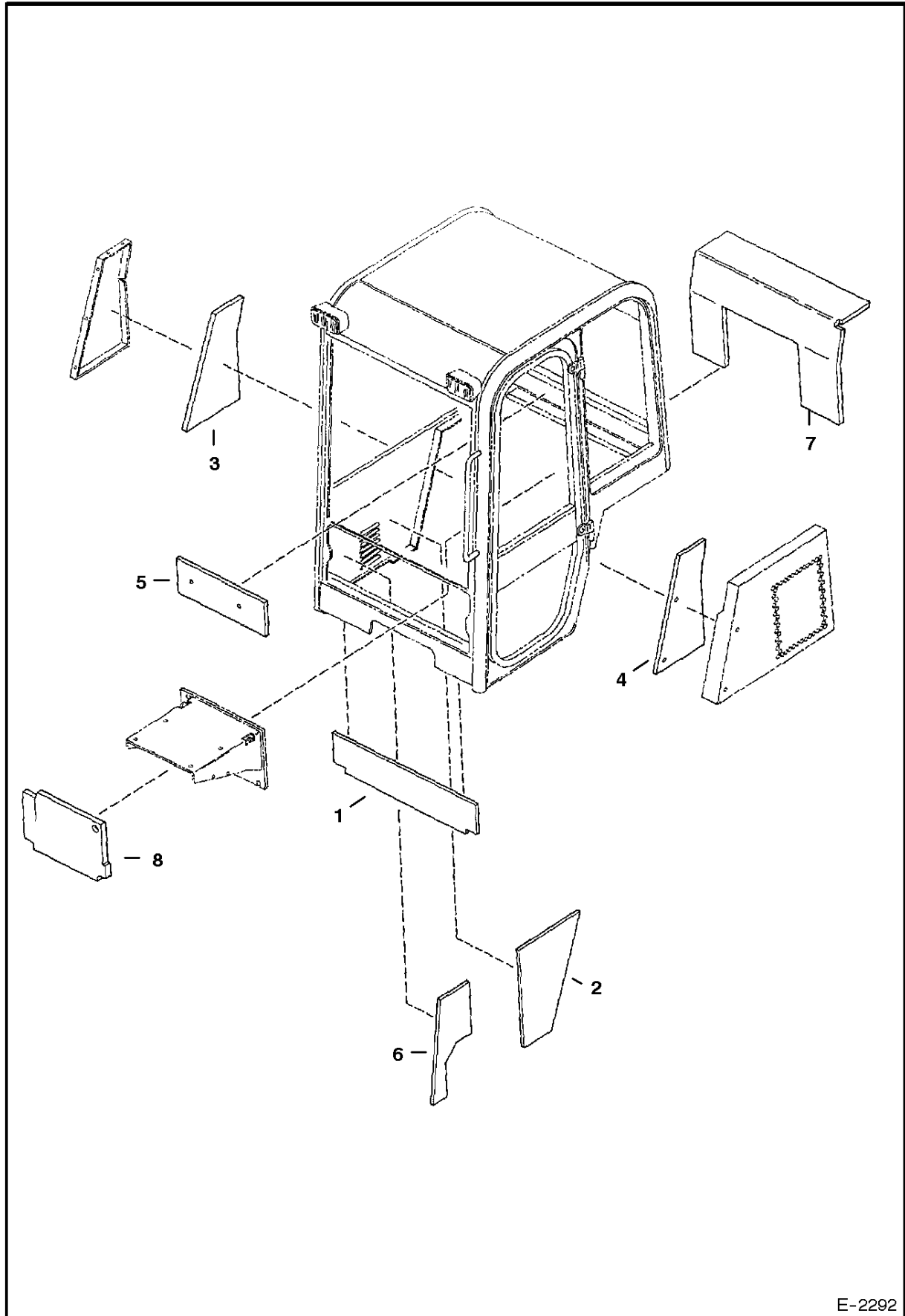
CAB & MOUNTING

Ref.N°	Part N°	Description	Remarks	Serial N°	Qty.
1	SALES	CAB ASSY.	See Pages OPERATOR CAB(1)-CAB & MOUNTING(41)) - See Note		1
2	6805244	WASHER			4
3	6560633	MOUNT			4
4	6589675	SCREW			4
5	6588651	PANEL			1
6	6589892	FLOORMAT	Cab	11001 - 12999	1
7	6588794	PLATE			1
8	6588891	PANEL	Side Cover - Order Ref. CAB & MOUNTING(37) (5)		1
9	6503451	SPACER			2
10	26GM-10030	SCREW			2
11	6588177	PLATE			2
12	43DM-12	NUT	Was 49DM-12 [B]		2
13	1CM-1255	BOLT	Was 7CM-1255 [A]		2
14	7CM-1250	SCREW			2
15	6665242	HEATER	See Page HEATER(4)		1
16	26GM-10020	SCREW			1
17	NAP	HOSE	84'(2134mm) longAOrder Ref. CAB & MOUNTING(32)		2
18	NAP	HOSE	3' (76mm) long Order Ref.CAB & MOUNTING(32)		1
19	NAP	HOSE	10'(250mm) long Order Ref.CAB & MOUNTING(33)		1
20	NAP	HOSE	8' (203mm) long Order Ref.CAB & MOUNTING(33)		1
21	5HM-23	CLAMP	Was 52H-8 [A]		6
22	6585223	ORIFICE			7
23	6648485	TEE	Was 6564697 [A]		2
24	6610510	NYLON TIE			4
25	29CM-816	BOLT			5
26	29CM-616	SCREW			2
27	6664438	WASHER	Window Washer - W/Ref.CAB & MOUNTING(28)		1
27	6664554	PUMP			1
27	6664556	HOSE			1
27	6664555	NOZZLE			1
28	6664557	BRACKET			1
29	NAP	FOAM	37'(940mm) long Order Ref.CAB & MOUNTING(31)		1
30	NAP	FOAM	63'(1600mm) long Order Ref.CAB & MOUNTING(31)		1
31	6801027	SEAL	Bulk - Sold Per Foot - Was 6511855 [B]		x
32	889269	HOSE	Bulk - Sold Per Foot		x
33	6565977	HOSE	Bulk - Sold Per Foot		x
34	6807987	INSULATION	Was 6589660[A]		1
35	5HM-20	CLAMP			4
36	6900465	HANDBOOK	Operators - English - Was 6596919 [A]		1
37	43DM-8	NUT	Was 42DM-8 [B]		5
38	6589656	PANEL	Storage - Cab Models		1
38	6589655	PANEL	Storage - Canopy Models		1
39	6589657	ANGLE			1
40	6630207	RIVET			2
41	6661695	LOCK ASSY.			1
42	6587458	KEY SET			1
43	6536802	WASHER			2
44	17EM-120	WASHER			1
45	26GM-8016	SCREW			2
46	6589885	BRACKET	Washer Tank Mounting		1
47	6595707	HARNESS	Washer		1
48	NAP	LIGHT	Order 6668722 - Was 6664106 [A]		2
48	6665700	SEALED BEAM	for light 6664106		2
48	6664106	LIGHT	Was 6668722[A]		2

CAB & MOUNTING

Ref.N°	Part N°	Description	Remarks	Serial N°	Qty.
48	6668721	BULB	Replacement bulb for 6668722		2

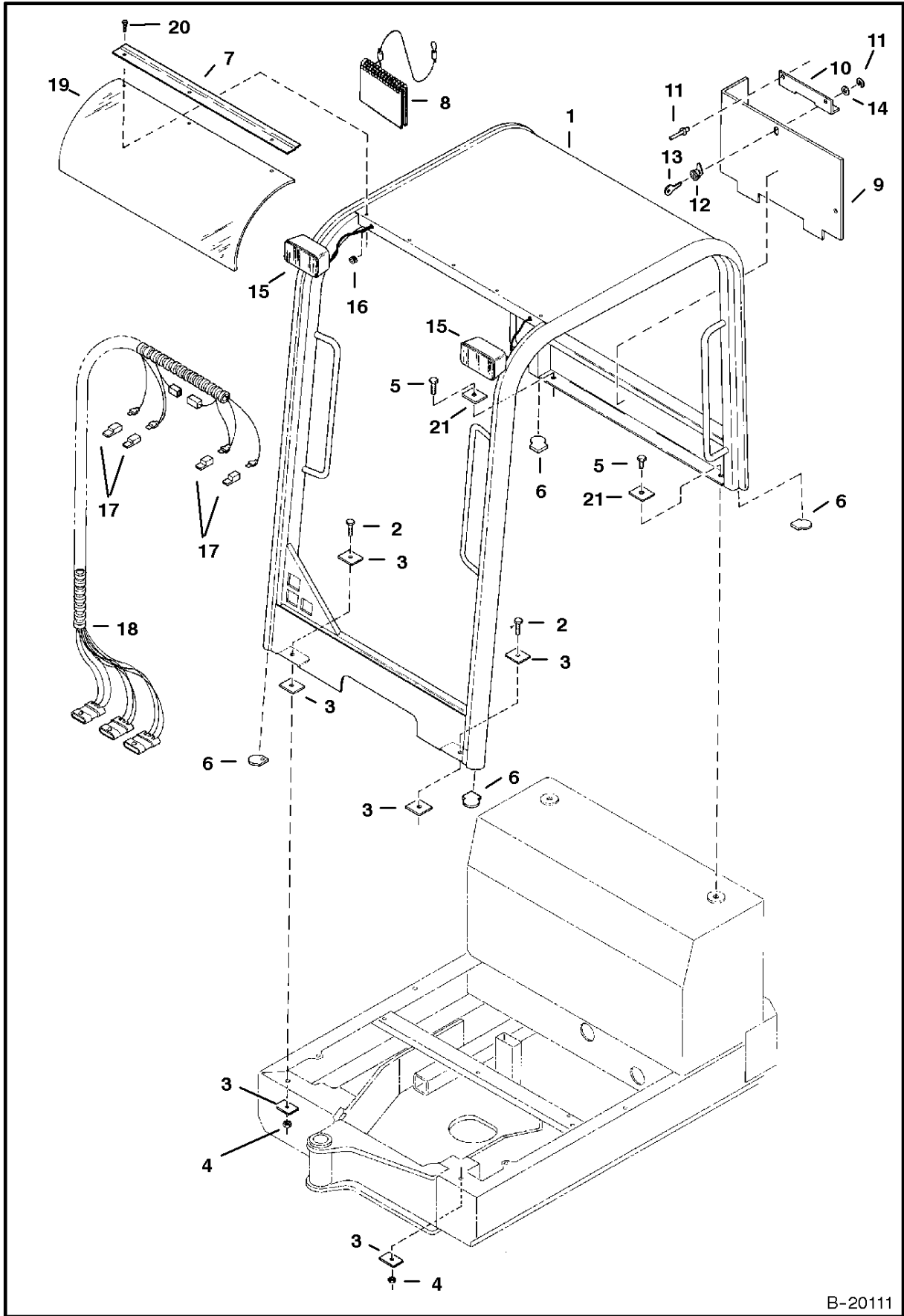
CAB INSULATION



CAB INSULATION

Ref.N°	Part N°	Description	Remarks	Serial N°	Qty.
1	6802959	INSULATION	Was 6588796 [A]		1
2	6800884	INSULATION	Was 6595394 [A]		1
3	6588798	INSULATION			1
4	6588859	INSULATION			1
5	6589664	INSULATION			1
6	6800883	INSULATION	Was 6595395 [A]		1
7	6596892	INSULATION			1
8	6596893	INSULATION			1

CANOPY & MOUNTING

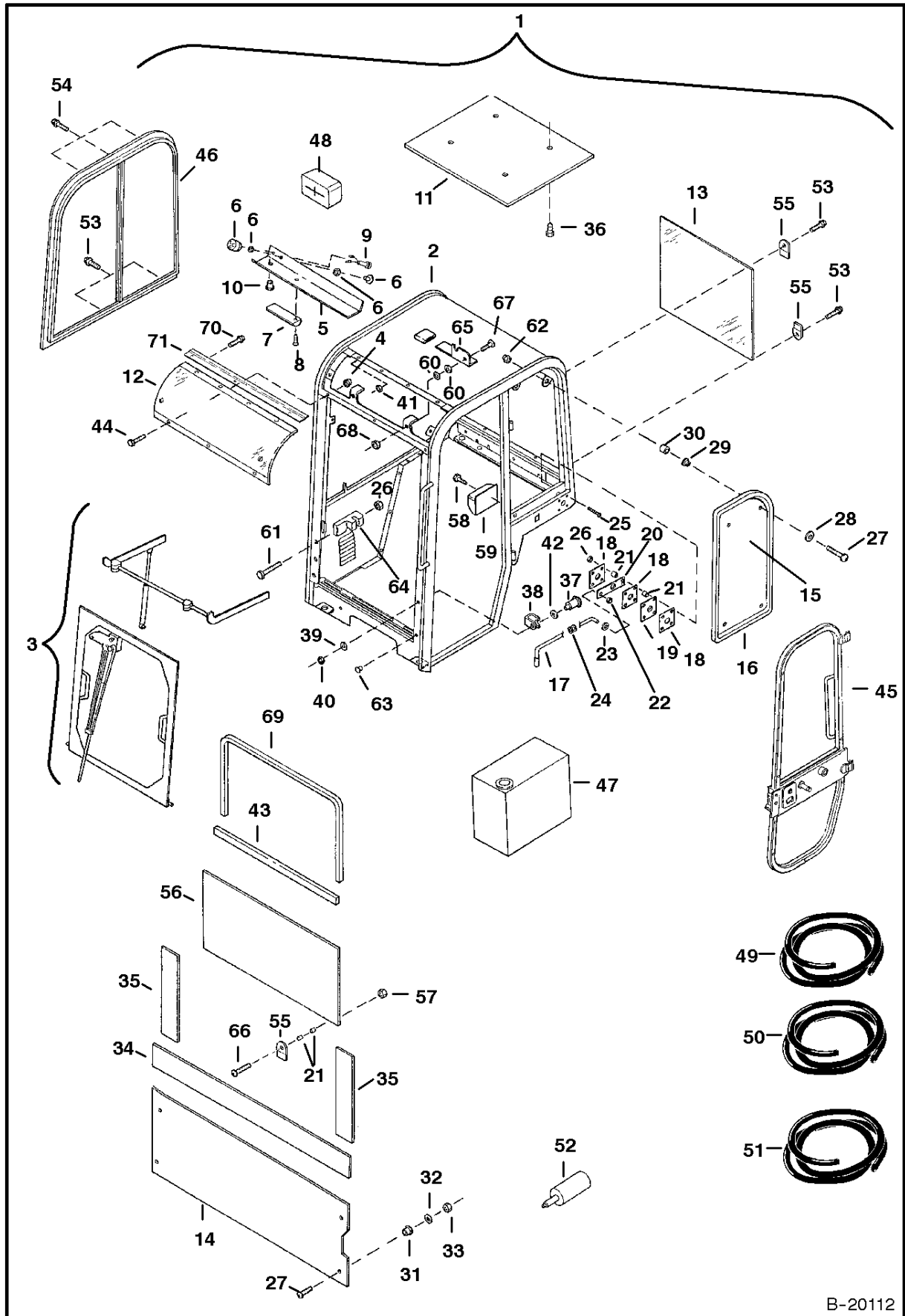


B-20111

CANOPY & MOUNTING

Ref.N°	Part N°	Description	Remarks	Serial N°	Qty.
1	NAP	CANOPY	Order 6800748 - Was SALES [A]		1
1	6800748	CANOPY	weldment only		1
2	7CM-1240	SCREW			2
3	6588177	PLATE			8
4	43DM-12	NUT			2
5	7CM-1225	BOLT			2
6	6807987	INSULATION	Was 6589660[A]		3
7	6805291	BRACKET			1
8	6900465	HANDBOOK	Operators - English - Was 6596919 [A]		1
9	6589655	PANEL	Storage - Canopy Models		1
9	6589656	PANEL	Storage - Cab Models		1
10	6589657	ANGLE			1
11	6630207	RIVET			2
12	6661695	LOCK ASSY.			1
13	6587458	KEY SET			1
14	6536802	WASHER			2
15	NAP	LIGHT	Order 6668722 - Was 6664106 [A]		2
15	6665700	SEALED BEAM	for light 6664106		2
15	6664106	LIGHT	Was 6668722[A]		2
15	6668721	BULB	Replacement bulb for 6668722 - Was 6667821 [D]		2
16	6664562	GROMMET	Was 1021036 [A]		3
17	6519548	CONNECTOR	Electrical		4
18	6628808	HARNESS	Canopy - also order Ref. CANOPY & MOUNTING(17)		1
19	6806131	WINDOW	Was 6595792 [A]		1
20	6589675	SCREW			3
20	26GM-6016	BOLT	Used W/Ref. CANOPY & MOUNTING(7)		3

OPERATOR CAB



B-20112

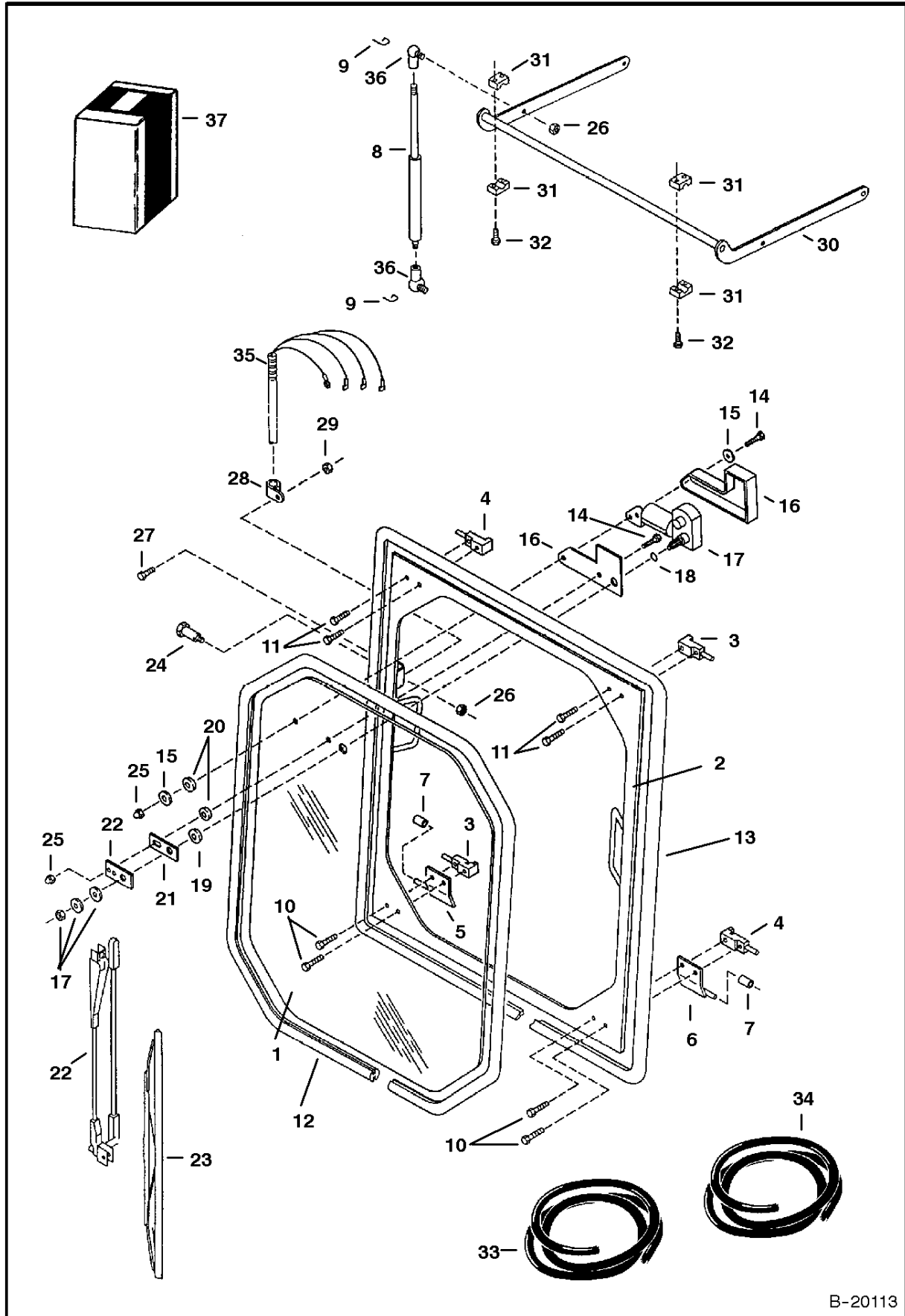
OPERATOR CAB

Ref.N°	Part N°	Description	Remarks	Serial N°	Qty.
1	NAP	CAB ASSY.	W/Refs. OPERATOR CAB(2)OPERATOR CAB(48) and All Items on Pages OPERATOR CAB(1) thru OPERATOR CAB(3) - See Note		1
2	NAP	CAB	Weldment - Order 6801477 - Was 6628839 [A]		1
2	6801477	CAB	Weldment only		1
3		WINDOW	Front - See Page OPERATOR CAB(2)		1
4	6664103	NUT	Acorn #10		3
5	6628898	CONSOLE	Was 6664564 [A]		1
6	6669315	SWITCH	Wiper/Washer - Was 6665398 [A]		1
7	6664084	DOME LIGHT			1
7	6665367	BULB	Was 6655055[A]		1
8	6664049	SCREW	Dome Light Mounting		2
9	6654166	FUSE HOLDER			1
9	6656270	FUSE	5amp.		1
10	6648358	GROMMET			1
11	6628899	INSULATION	Headliner - Was 6664161 [A]		1
12	6806131	WINDOW	Curved - Was 6664176 [A]		1
13	6664172	WINDOW	Rear		1
14	6664175	GLASS	Lower Front - W/Mtg holes & notch	11001 - xxxxx	1
15	6664171	GLASS	Left		1
16	NAP	SEAL	105'(2680mm) long - Order Ref. OPERATOR CAB(49)		1
17	6628900	ROD	Door Release - Was 6664137 [A]		1
18	6628902	PLATE	Was 6664134 [A]		3
19	6664146	SEAL			1
20	6628901	LATCH	Door Hold Open - Was 6664135 [A]		1
21	6664085	BUSHING			12
22	6660979	NUT	Push On		1
23	6660980	RETAINER	Push On		1
24	6654147	SPRING			1
25	6664068	BOLT	1 1/4' long		4
26	6664056	NUT	Acorn 1/4'		4
27	6648410	BOLT	3/4'		12
28	6664090	WASHER			4
29	6800788	GROMMET	Was 6664087 [A]		4
30	6664086	SPACER			4
31	6664089	GROMMET			4
32	6664065	WASHER			4
33	6664056	NUT	Acorn 1/4'		4
34	NAP	SEAL	36'(914mm) long - Order Ref. OPERATOR CAB(50)		1
35	NAP	SEAL	12'(305mm) long - Order Ref. OPERATOR CAB(50)		2
36	6664559	FASTENER	Insulation		4
37	6664080	PIN	Door Striker - w/internal threads		1
37	6649483	PIN	Door Striker - w/external threads	- Was 6654170 [A]	x
38	6664083	COVER			1
39	27E-6	WASHER	Was 25E-17 [D]		1
40	61D-6	NUT	used w/Ref. OPERATOR CAB(37)w/external threads		1
40	6664046	BOLT	used w/Ref. OPERATOR CAB(37) w/internal threads		1
41	6664562	GROMMET			4
42	6660975	GROMMET			1
43	NAP	SEAL	33" (838mm) Long - Order	Service Cab OnlyRef. ref1UCwlkc3ngg	x
44	6657095	BOLT	#10 x 1/2"		11
45		DOOR ASSY.	See Page OPERATOR CAB(20)		1
46		WINDOW ASSY.	Right Side - See Page OPERATOR CAB(20)		1
47		HEATER ASSY.	See Page HEATER(4)		1
48	NAP	LIGHT	Order 6668722 - Was 6664106 [A]		2
48	6665100	SEAL ED BEAM	for High 6664106		2

OPERATOR CAB

Ref.N°	Part N°	Description	Remarks	Serial N°	Qty.
48	6664106	LIGHT	Was 6668722[D]		2
48	6668721	BULB	Replacement bulb for 6668722 - Was 6667821 [D]		2
49	6664088	SEAL	Bulk - Order Per Foot		x
50	6648416	SEAL	Bulk - Order Per Foot		x
51	6664102	SEAL	Bulk - Order Per Foot		x
52	6654148	SEALANT	Window - 10 oz. tube		1
53	6654152	SCREW	#10 x 3/4' long		7
54	6665386	SCREW	#10 x 1-3/4' long		3
55	6665366	RETAINER	Glass		8
56	6668111	WINDOW	Lower front - No holes - No notch		1
56	6800637	WINDOW	Lower Front	Service Cab Only	1
57	6664103	NUT	Acorn #10 - Was 12D-10 [B]		4
58	58G-806	SCREW			2
59	6664075	ASH TRAY			1
60	6630038	WASHER		Service Cab Only	4
61	6664066	BOLT	2" (51mm) Long	Service Cab Only	2
62	6670760	GRIP		Service Cab Only	2
63	6670761	CAP	Hole Plug	Service Cab Only	1
64	6800651	MOUNT	Lower Glass	Service Cab Only	2
65	6801032	HANDLE	L.H. Shown	Service Cab Only	1
65	6801033	LATCH	R.H. Shown	Service Cab Only	1
66	6657095	BOLT	#10 x 1/2"	Service Cab Only	4
66	6801188	SCREW	#10 x 1"	Service Cab Only	2
67	6800857	BOLT		Service Cab Only	2
68	87D-5	NUT		Service Cab Only	2
69	NAP	SEAL	56" (1422mm) Long - Order	Ref. ref1UCwlkc3ngg	x
70	26GM-6016	BOLT			3
71	6805291	BRACKET			1

OPERATOR CAB (Front Window)

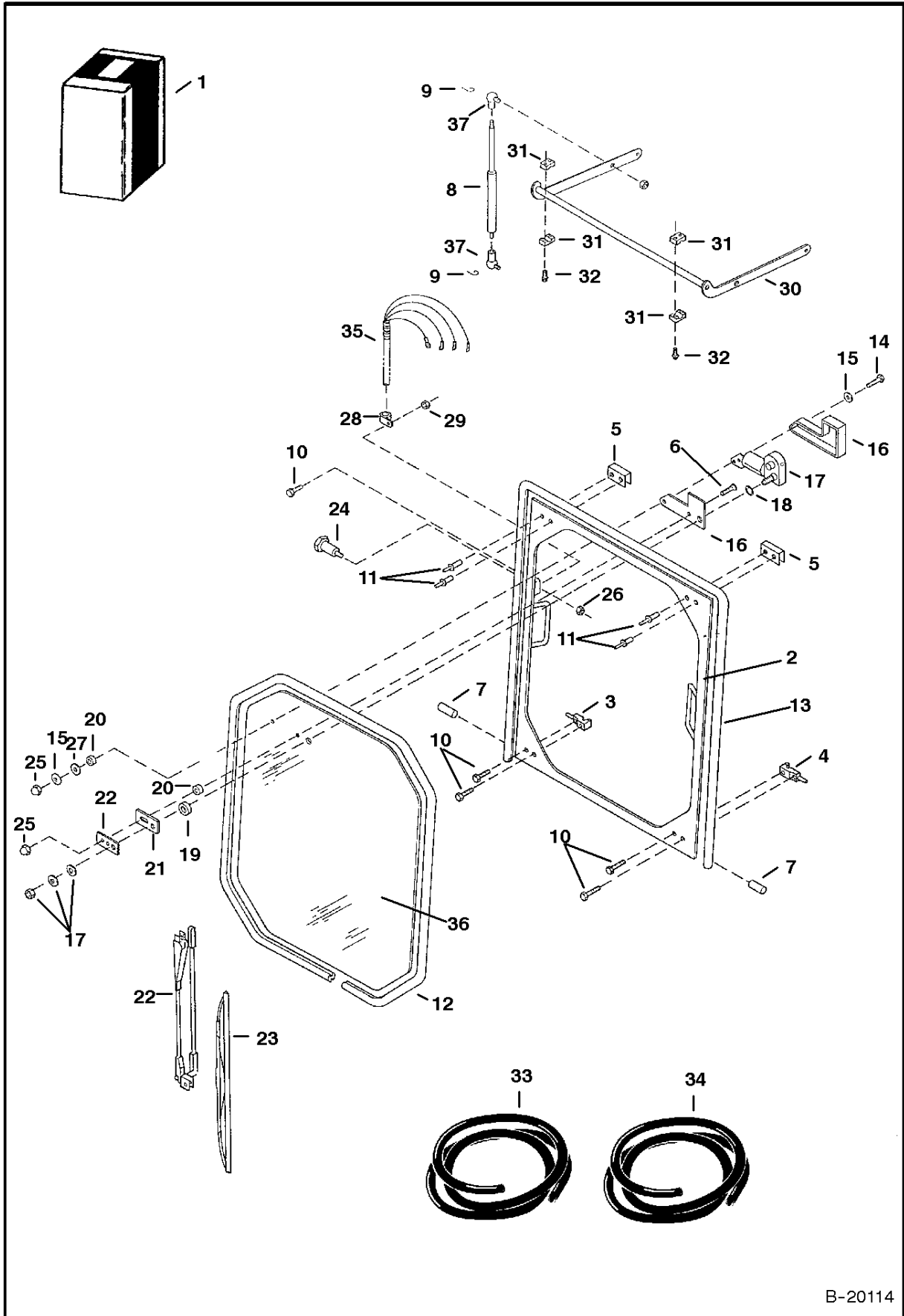


B-20113

OPERATOR CAB

Ref.N°	Part N°	Description	Remarks	Serial N°	Qty.
1	NAP	WINDOW ASSY	Incl. Refs. OPERATOR CAB(1)-OPERATOR CAB(6), OPERATOR CAB(10)-OPERATOR CAB(17), OPERATOR CAB(19)-OPERATOR CAB(23), OPERATOR CAB(1
1	6667155	WINDOW ASSY#	Incl. Refs. OPERATOR CAB(2)OPERATOR CAB(15), OPERATOR CAB(19), OPERATOR CAB(20), OPERATOR CAB(23)OPERATOR CAB(29) & OPERATOR CAB(x
2	6628875	FRAME	Was 6667194 [A]		1
3	6628883	LATCH	Was6667192 [A]		2
3	6628889	HANDLE			2
4	6628884	LATCH	Was 6667193 [A]		2
4	6628889	HANDLE			2
5	6628879	GUIDE PIN	Was 6667190 [A]		1
6	6628880	GUIDE PIN	Was 6667191 [A]		1
7	6667202	ROLLER			1
8	6667199	GAS SPRING			1
9	6664073	CLIP	Ball Joint Retainer		2
10	6667197	BOLT	3/4' long		4
11	6667196	BOLT	5/8' long		4
12	NAP	SEAL	116' (2946mm) long - Order Ref. OPERATOR CAB(33)		1
13	NAP	SEAL	135' (3429mm) long - Order Ref. OPERATOR CAB(34)		1
14	6664566	SCREW			2
15	6664065	WASHER			2
16	6664177	COVER	Wiper Motor		1
17	6664094	WIPER MOTOR	2 Speed		1
17	6668137	MOTOR	Single speed		1
18	6664098	O-RING	Wiper Motor Shaft		1
19	6667201	SPACER			1
20	6664085	BUSHING			2
21	6664178	GASKET	Was 6667200 [A]		1
22	6664095	ARM	Wiper - W/Pivot Mount		1
23	6664096	BLADE	Wiper		1
24	6800857	BOLT	Was 6664108 [A]		2
25	6664103	NUT			2
26	6648364	NUT			2
27	6667198	BOLT			1
28	30H-21	CLAMP	Was 30H-18 [A]		1
29	6664056	NUT			1
30	6803154	LINKAGE	Was 6628891 [A]		1
31	6664560	BLOCK	Linkage Mount		2
32	6664059	BOLT			4
33	6648405	SEAL	Bulk - Sold Per Foot		x
34	6664088	SEAL	Bulk - Sold Per Foot		x
35	6669142	HARNESS	Wiper Motor - single speed - Was 6664162 [A]		1
35	NAP	HARNESS	Wiper Motor - two speed		1
35	6669141	HARNESS	Cab - Was 6664162 [A]		1
36	6649244	BALL STUD	Cylinder - Was 6664072 [A]		2
37	6667195	GLASS			1

OPERATOR CAB (Front Window)

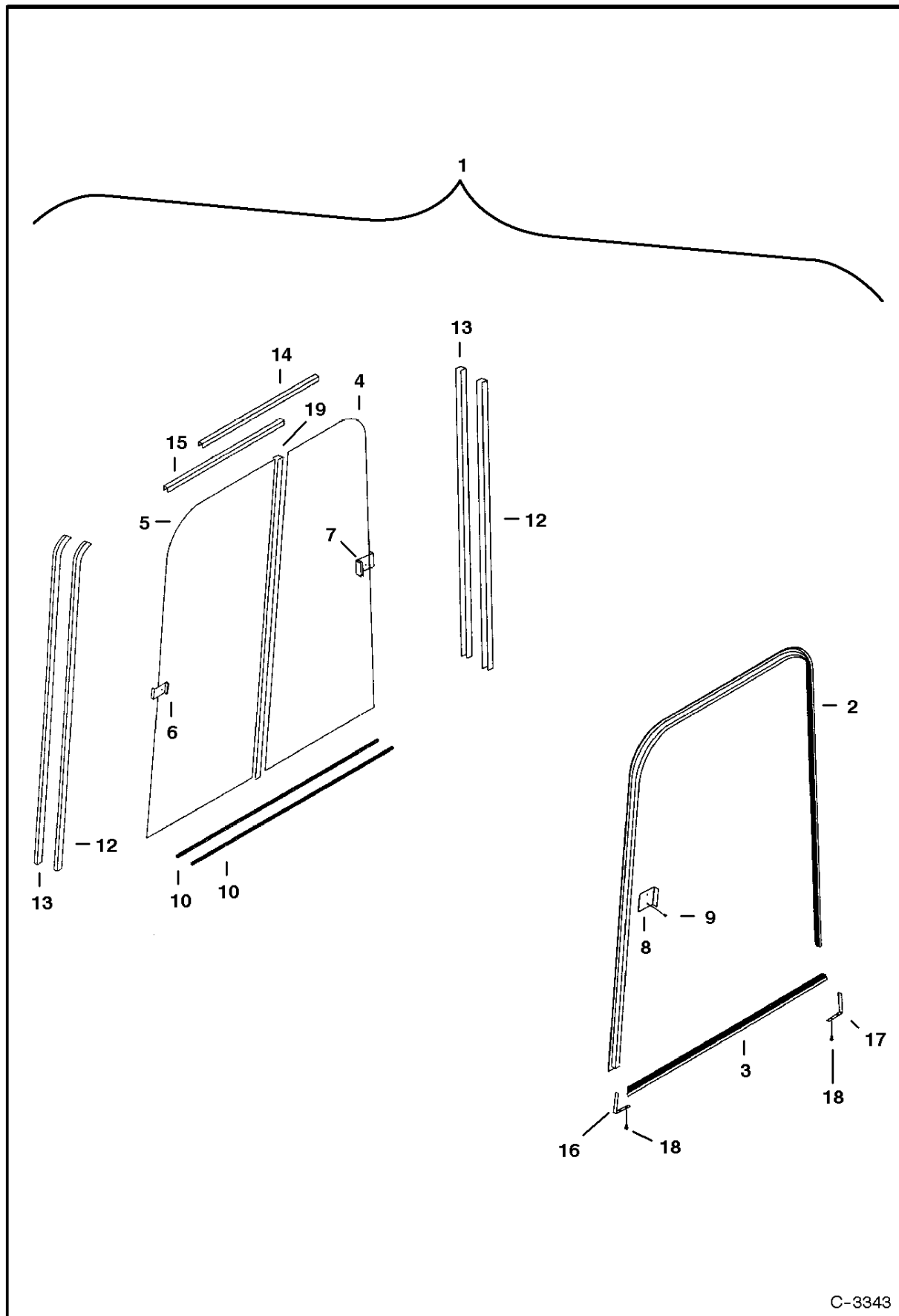


B-20114

OPERATOR CAB

Ref.N°	Part N°	Description	Remarks	Serial N°	Qty.
1	6800880	WINDOW ASSY	Incl. Refs. 1-OPERATOR CAB(6), OPERATOR CAB(10)-OPERATOR CAB(17), OPERATOR CAB(19)-OPERATOR CAB(23), OPERATOR CAB(25), OPERATOR		1
2	6800876	FRAME			1
3	6801502	LATCH	R.H.		1
3	6628889	HANDLE			1
4	6801503	LATCH	L.H.		1
4	6628889	HANDLE			1
5	6801420	CHANNEL			2
6	6801188	SCREW			1
7	6800873	ROLLER			1
8	6667199	GAS SPRING			1
9	6649245	CLIP	Ball Joint Retainer		2
10	6667196	BOLT	5/8' long		5
11	6630207	RIVET			4
12	NAP	SEAL	119' (3018mm) long - Order Ref. OPERATOR CAB(33)		1
13	NAP	SEAL	180' (4572mm) long - Order Ref. OPERATOR CAB(34)		1
14	6664566	SCREW			2
15	6664065	WASHER			2
16	6664177	COVER	Wiper Motor		1
17	6668137	MOTOR	Single speed		1
18	6664098	O-RING	Wiper Motor Shaft		1
19	6667201	SPACER			1
20	6664085	BUSHING			2
21	6664178	GASKET			1
22	6664095	ARM	Wiper - W/Pivot Mount		1
23	6664096	BLADE	Wiper		1
24	6800857	BOLT			2
25	6664103	NUT			2
26	6648364	NUT			2
27	6801059	WASHER			1
28	30H-21	CLAMP			1
29	6669138	NUT			1
30	6803154	LINKAGE	Was 6628891 [A]		1
31	6664560	BLOCK	Linkage Mount		2
32	6664059	BOLT			4
33	6514301	SEAL	Bulk - Sold Per Foot		x
34	6670759	SEAL	Bulk - Sold Per Foot		x
35	6669142	HARNESS	Wiper		1
35	6669141	HARNESS	Cab		1
36	6667195	GLASS			1
37	6649244	BALL STUD			2

**OPERATOR CAB
(Right Hand Window)**

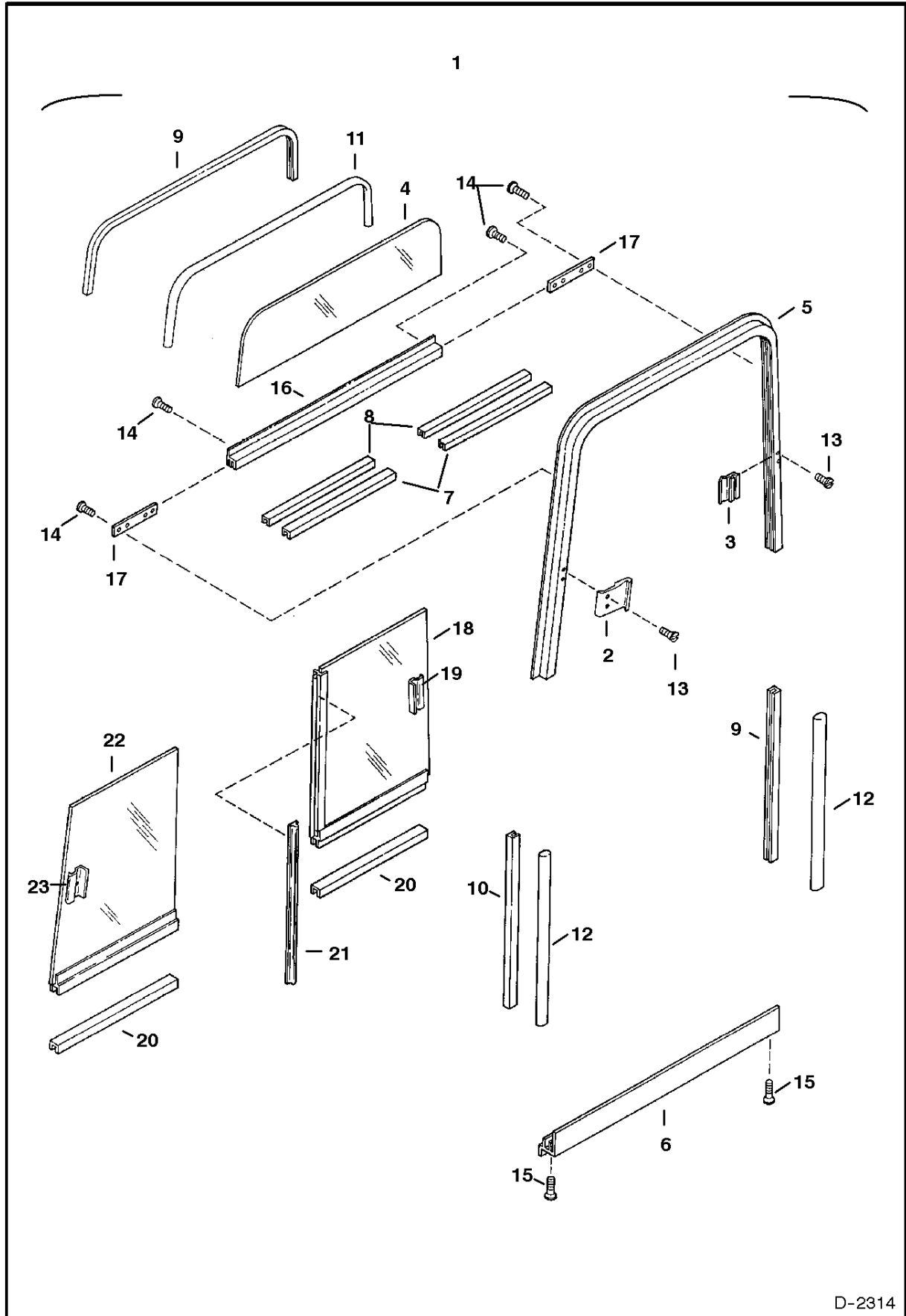


C-3343

OPERATOR CAB

Ref.N°	Part N°	Description	Remarks	Serial N°	Qty.
1	NAP	WINDOW ASSY.	Sliding - W/Refs. OPERATOR CAB(2)-OPERATOR CAB(18) - Order 6667616 - Was6664173 [A]		1
2	6664865	FRAME	Top		1
3	6664866	FRAME	Bottom		1
4	6664863	GLASS	Rear side - W/Ref. 7		1
5	6664864	GLASS	Front side - W/Ref. 6		1
6	6665026	LATCH ASSY	Front - incl. mtg. hardware		1
7	6665027	LATCH	Rear - incl. mtg. hardware		1
8	6664862	RETAINER	Latch		1
9	NAP	SCREW	Was 6664875[A]		2
10	6664872	CHANNEL	Front inner		1
11	6664868	CHANNEL	Window stop		1
12	6664867	CHANNEL	Rear inner		1
13	6664871	CHANNEL	Rear outer		1
14	6664869	CHANNEL	Top outer		1
15	6664870	CHANNEL	Top inner		1
16	6664860	BRACKET	Front corner		1
17	6664861	BRACKET	Rear corner		1
18	6664876	SCREW			4
19	NAP	SUPPORT	Window - Was 6665914 [A]		1

**OPERATOR CAB
(Right Hand Window)**

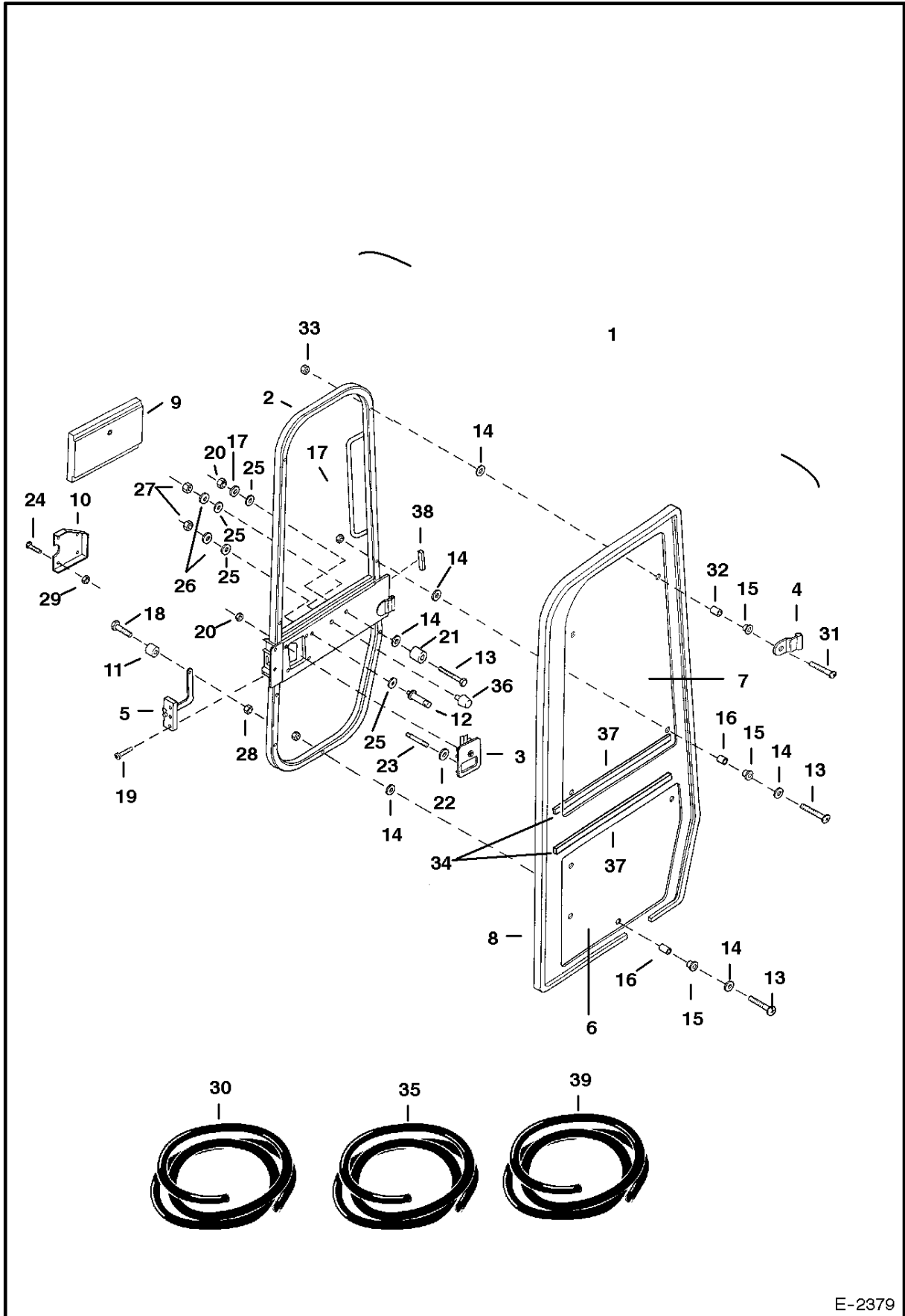


D-2314

OPERATOR CAB

Ref.N°	Part N°	Description	Remarks	Serial N°	Qty.
1	6667616	WINDOW ASSY	R.H. - W/Refs. 2-24		1
2	6667593	LATCH			1
3	6667594	LATCH			1
4	6667595	GLASS	Upper		1
5	6667596	FRAME			1
6	6667597	FRAME			1
7	6667598	CHANNEL	20' (508mm) long		2
8	6667599	CHANNEL	18' (457mm) long		2
9	6667600	CHANNEL	28.5' (724mm) long		2
10	6667601	CHANNEL	28.5' (724mm) long		1
11	6667602	TRIM	Rubber - 47' (1194mm) long		1
12	6667603	TRIM	Rubber - 32.5' (826mm) long		2
13	6667604	SCREW			4
14	6667605	SCREW			4
15	6664876	SCREW	Was 6667606[A]		2
16	6667607	FRAME	W/Ref. 17		1
17	6667608	BRACKET			2
18	6667609	GLASS ASSY	W/Ref. 19-21		1
19	6667610	LATCH ASSY	W/Mounting Hardware		1
20	6667612	CHANNEL	20' (508mm) long - Was 6667615 [A]		2
21	6667611	SEAL	28.5' (724mm) long		1
22	6667613	GLASS ASSY	W/Ref. 22 & 23		1
23	6665026	LATCH ASSY	W/Mounting Hardware - Was 6667614 [A]		1

OPERATOR CAB (Door)

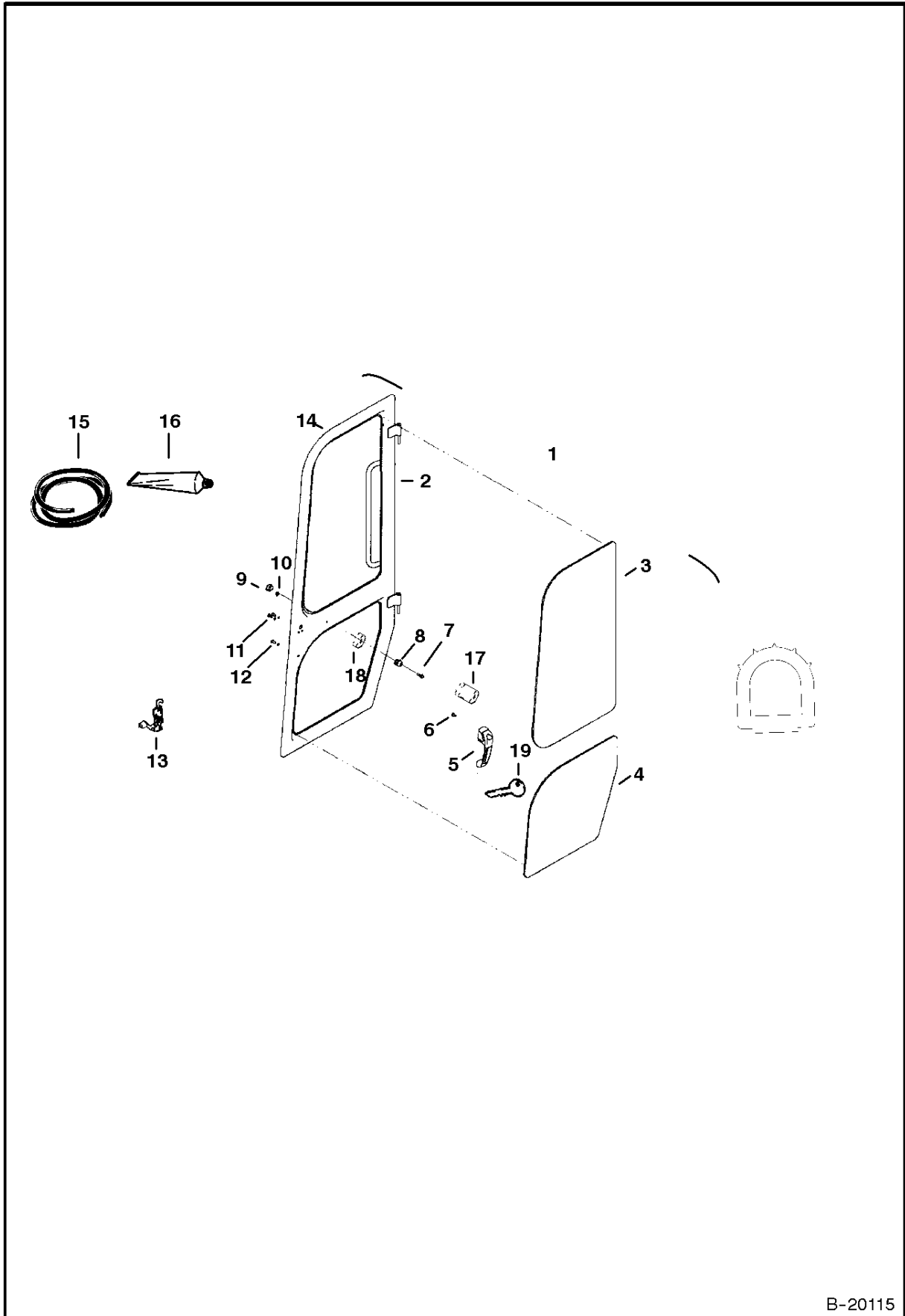


E-2379

OPERATOR CAB

Ref.N°	Part N°	Description	Remarks	Serial N°	Qty.
1	NAP	DOOR ASSY.	W/Ref. OPERATOR CAB(2)-OPERATOR CAB(21) - Order 6805226 - See BTI E - Was 6628863[A]		1
2	NAP	DOOR	Weldment - Order 6805226 See BTI E-058 - Was 6628864 [A]		1
3	6661631	LATCH	Outside		1
3	6587458	KEY SET			1
4	6628872	HINGE	Top - Was 6664139 [A]		1
5	6664572	LATCH	Inside - with handle		1
6	6664573	GLASS	Bottom		1
7	6664574	GLASS	Top		1
8	NAP	SEAL	162' (4115mm) long - Order Ref. OPERATOR CAB(30)		1
9	NAP	INSULATION	Was6667841 [A]		1
10	6664576	COVER	Door latch		1
11	6664092	KNOB	Door latch		1
12	NAP	RETAINER	Door Hold Open -See BTI E-058 Was 6628873[A]		1
12	6800844	RETAINER	Door Hold Open	Service Replcmnt	1
13	6664066	BOLT	2'(51mm) long		8
14	6664090	WASHER	1'(25mm) O.D.		16
15	6800788	GROMMET	Was 6664087 [A]		8
16	6664086	SPACER	3/8' (9,5mm) long		8
17	6664056	NUT	Acorn 1/4'		7
17	6667837	NUT	Hex 1/4'^com32. }H~10{M		x
18	85G-1010	SCREW			7
19	6648410	BOLT			4
20	85D-4	NUT			4
21	6664569	BUMPER	See BTI E-058		1
22	61D-6	NUT	Was 6648418 [B]		1
23	38C-816	BOLT	Striker - Was 6667838[A]		1
24	6657095	BOLT			4
24	6667839	BOLT	Self-Tapping - Used W/Ref. OPERATOR CAB(29)		4
24	26GM-6016	BOLT	Self-TappingAUsed when Ref. OPERATOR CAB(29) is not present - Was 6589675 [A]		4
25	6648397	WASHER			2
26	4E-5	WASHER			1
27	61D-5	NUT			1
28	12D-10	NUT	Was 6664050 [A]		1
29	6664570	NUT	Clip - early machines only		4
30	6664088	SEAL	Bulk - Sold Per Foot		x
31	6667842	BOLT	2-1/4' (957mm) long		1
32	6667840	SPACER	3/8' (9,5mm) long		1
33	6667843	NUT	5/16'		1
34	NAP	SEAL	48' (1219mm) long - Order Ref. OPERATOR CAB(35)		2
35	6654162	SEAL	Bulk - Sold Per Foot		x
36	6649040	BUMPER	See BTI E-058	Service Replcmnt	1
37	NSS	FOAM	Window - Order 23" - Ref. OPERATOR CAB(39)		2
38	NSS	FOAM	Door - Order 6" - Ref. OPERATOR CAB(39)		1
39	6584202	FOAM	Bulk - Sold Per Foot		x

OPERATOR CAB (Door)

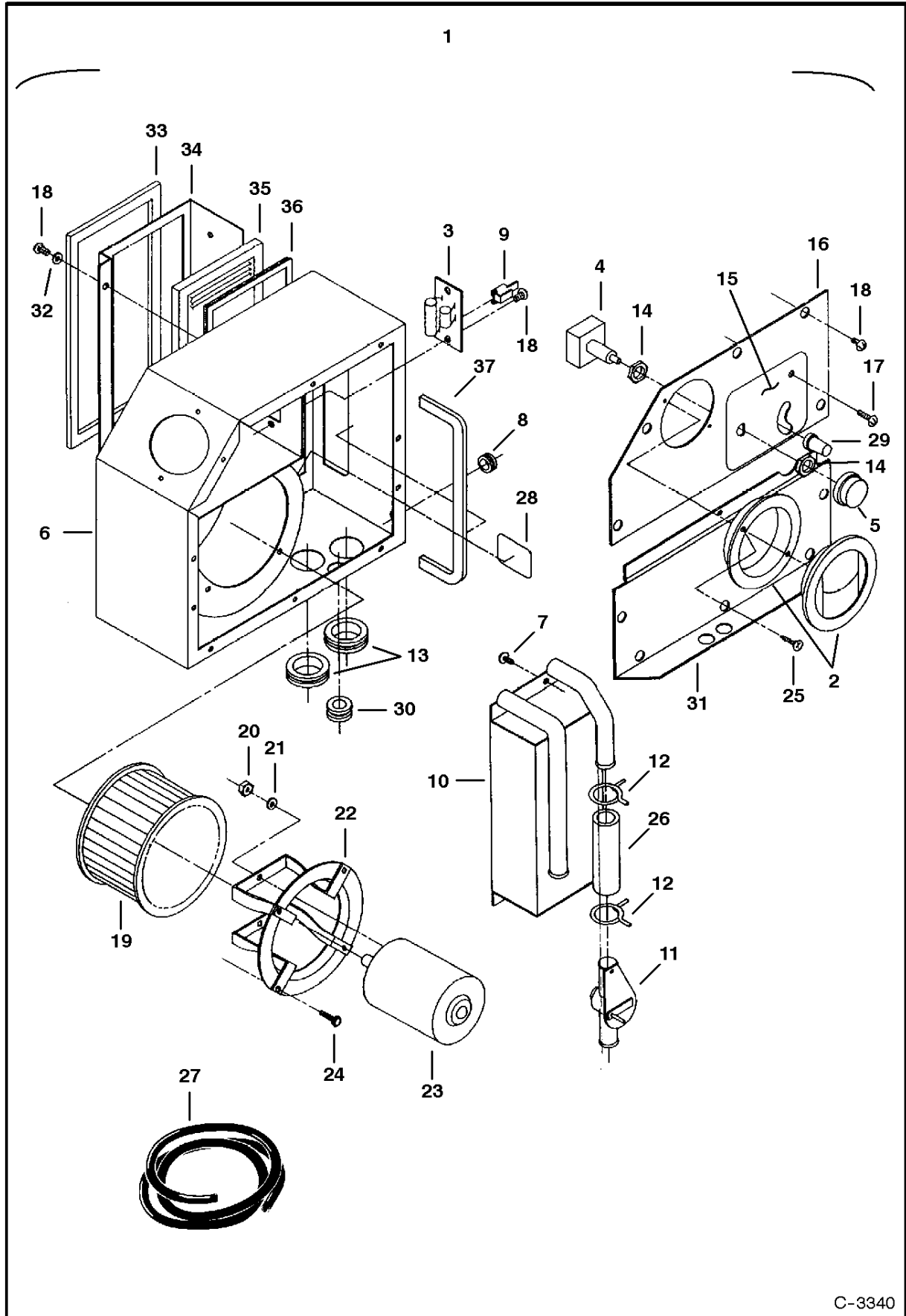


B-20115

OPERATOR CAB

Ref.N°	Part N°	Description	Remarks	Serial N°	Qty.
1	NAP	DOOR ASSY	Ref. 2 - OPERATOR CAB(14) - Order 6807882 & 6709527 Key - Was 6805226[A]		1
1	6807782	DOOR ASSY	Ref. 2 - OPERATOR CAB(14) - Order 6807882 & 6709527 Key		1
2	6805469	DOOR			1
3	6805470	GLASS	Upper		1
4	6805471	GLASS	Lower		1
5	6675282	HANDLE	for NAP door assy		1
5	6674667	HANDLE	for 6807782 door assy		1
6	17C-408	BOLT			1
7	17C-416	BOLT			1
8	6675385	PLUG	hold-open		1
9	6648391	PLUG	hole		1
10	55D-4	NUT			1
11	6803202	SCREW			5
12	6EM-60	WASHER			2
13	6674666	LATCH			1
14	NAP	SEAL	door - Order Ref. OPERATOR CAB(15) - 158" (401,3m m) long		1
15	6675410	SEAL	bulk		x
16	6675462	URETHANE	10.5 oz. tube, black		x
17	6675386	SOCKET	hold open		1
18	6808446	SPACER			1
19	6587458	KEY SET	for handle 6675282		1
19	6709527	KEY	for handle 6674667		1

HEATER
(With 3 Speed Fan Motor & With Filter)

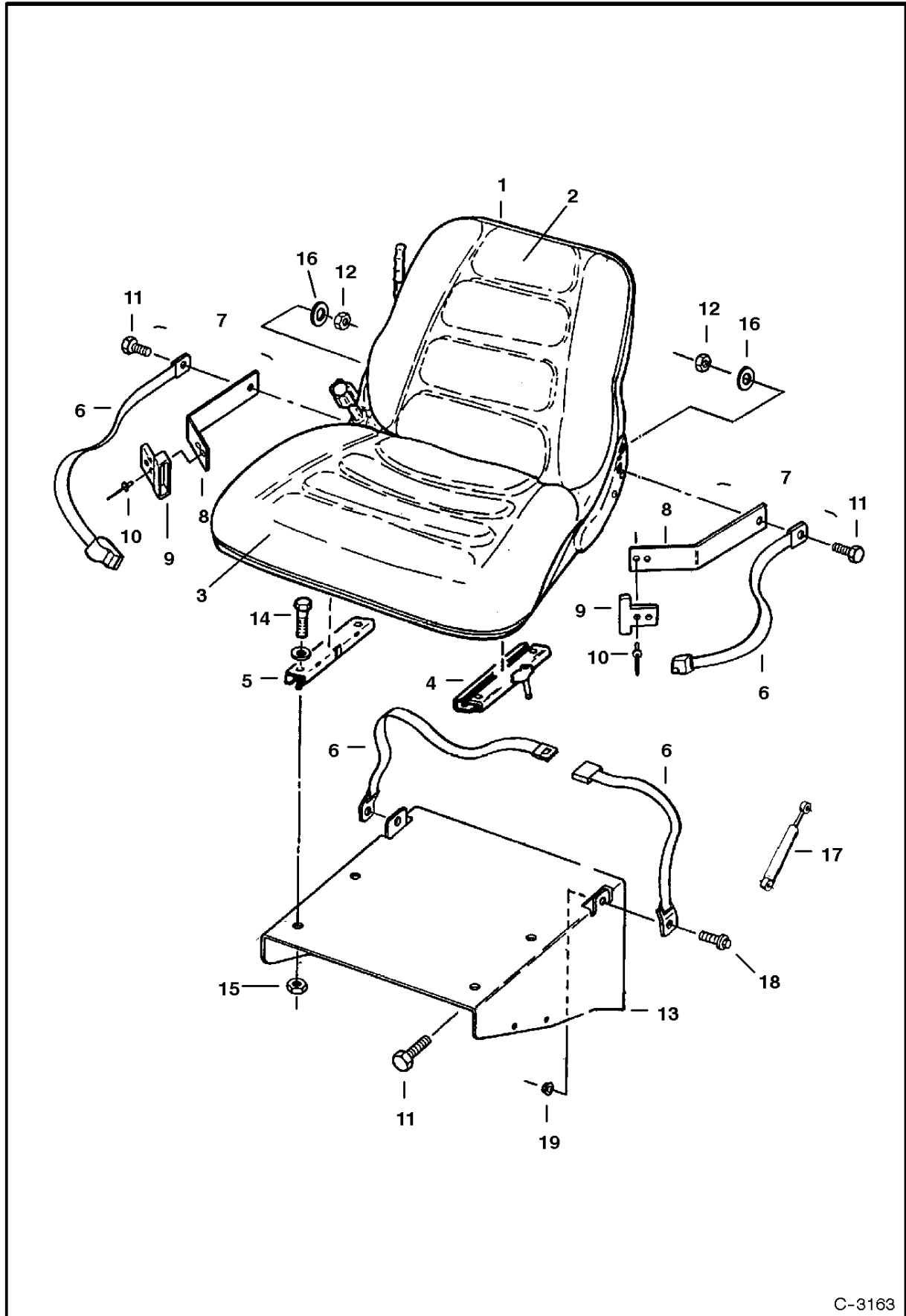


C-3340

HEATER

Ref.N°	Part N°	Description	Remarks	Serial N°	Qty.
1	6665242	HEATER	W/Ref. HEATER(2)-HEATER(26) & HEATER(28)-HEATER(31)		1
2	6664342	LOUVER			2
3	6632584	RESISTOR			1
4	6660659	SWITCH	Fan		1
5	6660822	KNOB	Fan Switch		1
6	6665516	HOUSING	Heater		1
7	6665518	SCREW			4
8	6654196	GROMMET			1
9	6660654	CONNECTOR			1
10	6654790	CORE	Heater		1
11	6654792	VALVE	Water Shut Off		1
12	6654192	CLAMP			2
13	6641056	GROMMET			2
14	6624435	NUT			2
15	6664343	DECAL			1
16	6664346	COVER	Top		1
17	85G-808	SCREW			1
18	6641066	SCREW			17
19	6648468	FAN			1
20	6641073	NUT			2
21	6641072	WASHER			2
22	6648467	BRACKET			1
23	6660658	MOTOR	12 volt-3 speed		1
24	6641062	SCREW	Was 6640162 [D]		4
25	6662678	SCREW			4
26	NAP	HOSE	4' long (102mm) - Order Ref. HEATER(27)		1
27	889269	HOSE	Bulk - Sold Per Foot		x
28	6660656	DECAL	Wiring		1
29	6660881	KNOB	Water Valve		1
30	6664344	GROMMET			1
31	6665519	COVER	Bottom		1
32	12E-10	WASHER			4
33	6665512	SEAL			1
34	6665513	PLATE			1
35	6665514	FILTER			1
36	6665515	SEAL			1
37	6665517	SEAL			1

SEAT

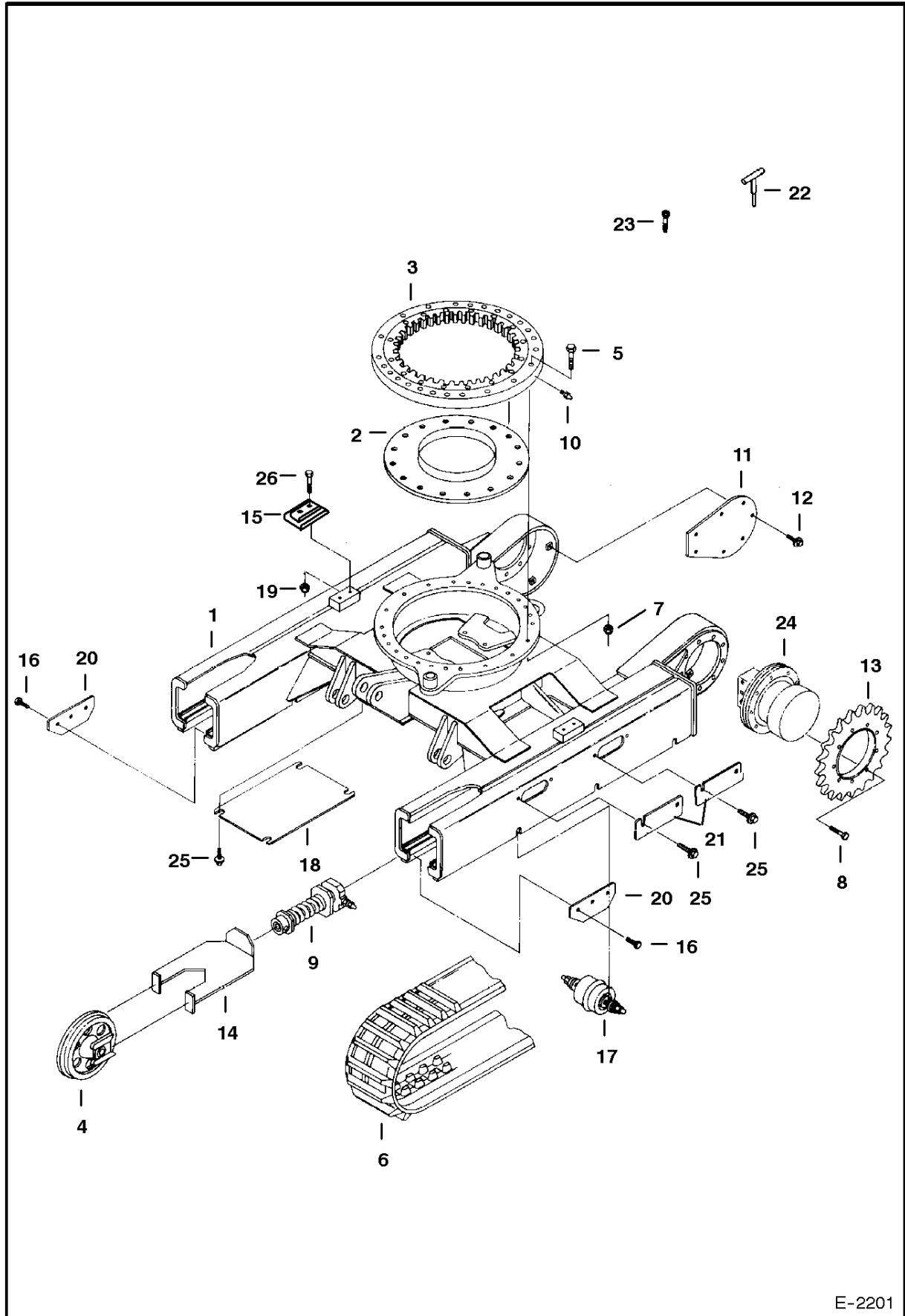


C-3163

SEAT

Ref.N°	Part N°	Description	Remarks	Serial N°	Qty.
1	6632388	SEAT	W/Ref. SEAT(2)-SEAT(5) & SEAT(17)		1
2	3737081	CUSHION	Backrest		1
3	3737010	CUSHION	Seat		1
4	3737000	TRACK	W/Adjusting Handle		1
5	3737001	TRACK	W/O Adjusting Handle		1
6	6564774	SEAT BELT			1
7	6534812	GUIDE ASSY.	Seat Belt - W/Ref. SEAT(8)-SEAT(10)		2
8	NSS	STRAP			2
9	6565355	GUIDE			2
10	1662965	RIVET			4
11	29CM-1020	BOLT			2
12	4DM-10	NUT	Was 1DM-10 [A]		2
13	6596351	MOUNT	Seat - Was 6595376 [A]		1
14	29CM-816	BOLT			4
15	1DM-8	NUT			4
16	6EM-100	WASHER			2
17	6660348	GAS SPRING	Seat		1
18	29CM-1030	SCREW			2
19	51DM-10	NUT	Was 45DM-10 [B]		2

UNDERCARRIAGE



E-2201

**Thank you very much
for your reading.**

**Please click here and go
back to our website.**

**Then, you can download
the complete manual
instantly.**

No waiting.

Have questions.

Please write to me.

**All the problems will be answered
within 12 hours.**

aservicemanuapdf@yahoo.com