

**320
322**

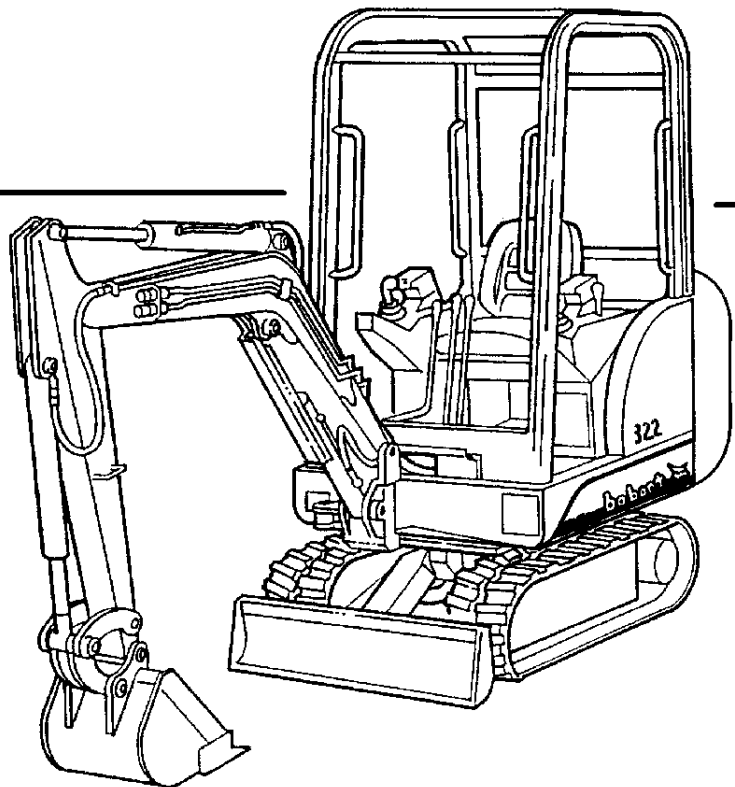


Bobcat®

**D-Series
G-Series**

Parts Manual

**320D (S/N 2238 11001 & Above)
322D (S/N 2235 11001 & Above)
320G (S/N 2239 11001 & Above)
322G (S/N 2340 11001 & Above)**



6901093 (7-03) Revised (1-04)

Printed in U.S.A.

© Bobcat Company 2004

Our customer service email: aservicemanualpdf@yahoo.com

320/322 D & G Series Contents

MAIN FRAME	9-46
MAINTENANCE ITEMS	9-10
MAINTENANCE SCHEDULE	11-12
UPPERSTRUCTURE & ENGINE COVERS	13-18
OPERATOR CANOPY	19-22
OPERATOR CAB	23-46
UNDERCARRIAGE	47-68
UNDERCARRIAGE	47-48
RECOIL SPRING	49-50
FRONT IDLER	51-58
TRACK ROLLER	59-66
TRACKS	67-68
WORK EQUIPMENT	69-78
ARM	69-70
BOOM	71-74
SWING FRAME	75-76
BLADE	77-78
CONTROL CONSOLE	79-100
CONTROL CONSOLE	79-90
CONTROLS	91-100
HYDRAULIC CIRCUITRY	101-224
HYDRAULIC CIRCUITRY	101-134
SELECTOR VALVE ASSY	135-136
SWIVEL JOINT	137-144
R.H. JOYSTICK CONTROLS	145-148
L.H. JOYSTICK CONTROLS	149-152
TRAVEL MOTOR	153-156
MANIFOLD ASSY	157-160
CONTROL VALVE	161-162
CONTROL VALVE ASSY	163-164
VALVE SECTION	165-182
CONTROL VALVE	183-184
VALVE SECTION	185-202
SWING MOTOR	203-206
BRAKE VALVE	207-208
GEAR PUMP	209-212
ARM CYLINDER	213-214
BLADE CYLINDER	215-216
BOOM CYLINDER	217-218
BUCKET CYLINDER	219-220
SWING CYLINDER	221-222
TRACK EXPANSION CYLINDER	223-224
ELECTRICAL SYSTEM	225-238
ELECTRICAL	225-232
CAB ELECTRICAL	233-234
ALTERNATOR	235-236
STARTER	237-238
POWER UNIT	239-300
ENGINE & ATTACHING PARTS	239-246
ENGINE	247-248
ROCKER ARM COVER	249-250
ROCKER ARM & VALVES	251-252
CYLINDER HEAD	253-254
OIL PAN	255-256
GEARCASE	257-258
CRANKCASE	259-260
PISTON & CRANKSHAFT	261-262
MAIN BEARING CASE	263-264
CAMSHAFT	265-266
FUEL CAMSHAFT	267-268
GOVERNOR GROUP	269-270
SPEED CONTROL & STOP LEVER	271-272
WATER PUMP	273-274
WATER FLANGE & THERMOSTAT	275-276

320/322 D & G Series Contents (Cont'd)

POWER UNIT (CONT'D)	239-300
MANIFOLDS	277-278
FUEL & INJECTION PUMP	279-280
INJECTION PUMP	281-282
INJECTOR NOZZLES	283-284
NOZZLE HOLDER	285-288
LOWER GASKET KIT	289-290
UPPER GASKET KIT	291-292
AIR FILTER	293-294
FUEL SYSTEM	295-300
ACCESSORIES	304-371
BLOCK HEATER	304-305
BUCKET	306-307
BUCKET TEETH	308-309
CANOPY ENCLOSURE KIT	310-311
CLAMP KIT	312-313
CHARGE KIT	314-315
DECALS	316-319
HEATER KIT	320-323
HYDRAULIC BREAKER TOOLS	324-325
BREAKER MOUNTING KIT	326-327
HYDRAULIC BREAKER	328-345
LIGHT KIT	346-347
MOTION ALARM KIT	348-351
PURIFIER MUFFLER	352-353
RENTAL KIT	354-355
RIGHT HAND ENTRY KIT	356-357
SPECIAL APPLICATIONS CAB KIT	358-359
SPECIAL APPLICATIONS CANOPY KIT	360-361
STEEL TRACK KIT	362-363
TOP GUARD KIT	364-365
VINYL CAB ENCLOSURE KIT	366-367
X-CHANGE	368-369
BULK ITEMS	370-371
NUMERICAL	372-420
NUMERICAL ITEMS	372-420

320/322 D & G Series Contents

MAIN FRAME	9-46
MAINTENANCE ITEMS	9-10
MAINTENANCE SCHEDULE	11-12
UPPERSTRUCTURE & ENGINE COVERS	13-18
OPERATOR CANOPY	19-22
OPERATOR CAB	23-46
UNDERCARRIAGE	47-68
UNDERCARRIAGE	47-48
RECOIL SPRING	49-50
FRONT IDLER	51-58
TRACK ROLLER	59-66
TRACKS	67-68
WORK EQUIPMENT	69-78
ARM	69-70
BOOM	71-74
SWING FRAME	75-76
BLADE	77-78
CONTROL CONSOLE	79-100
CONTROL CONSOLE	79-90
CONTROLS	91-100
HYDRAULIC CIRCUITRY	101-224
HYDRAULIC CIRCUITRY	101-134
SELECTOR VALVE ASSY	135-136
SWIVEL JOINT	137-144
R.H. JOYSTICK CONTROLS	145-148
L.H. JOYSTICK CONTROLS	149-152
TRAVEL MOTOR	153-156
MANIFOLD ASSY	157-160
CONTROL VALVE	161-162
CONTROL VALVE ASSY	163-164
VALVE SECTION	165-182
CONTROL VALVE	183-184
VALVE SECTION	185-202
SWING MOTOR	203-206
BRAKE VALVE	207-208
GEAR PUMP	209-212
ARM CYLINDER	213-214
BLADE CYLINDER	215-216
BOOM CYLINDER	217-218
BUCKET CYLINDER	219-220
SWING CYLINDER	221-222
TRACK EXPANSION CYLINDER	223-224
ELECTRICAL SYSTEM	225-238
ELECTRICAL	225-232
CAB ELECTRICAL	233-234
ALTERNATOR	235-236
STARTER	237-238
POWER UNIT	239-300
ENGINE & ATTACHING PARTS	239-246
ENGINE	247-248
ROCKER ARM COVER	249-250
ROCKER ARM & VALVES	251-252
CYLINDER HEAD	253-254
OIL PAN	255-256
GEARCASE	257-258
CRANKCASE	259-260
PISTON & CRANKSHAFT	261-262
MAIN BEARING CASE	263-264
CAMSHAFT	265-266
FUEL CAMSHAFT	267-268
GOVERNOR GROUP	269-270
SPEED CONTROL & STOP LEVER	271-272
WATER PUMP	273-274
WATER FLANGE & THERMOSTAT	275-276

320/322 D & G Series Contents (Cont'd)

POWER UNIT (CONT'D)	239-300
MANIFOLDS	277-278
FUEL & INJECTION PUMP	279-280
INJECTION PUMP	281-282
INJECTOR NOZZLES	283-284
NOZZLE HOLDER	285-288
LOWER GASKET KIT	289-290
UPPER GASKET KIT	291-292
AIR FILTER	293-294
FUEL SYSTEM	295-300
ACCESSORIES	304-371
BLOCK HEATER	304-305
BUCKET	306-307
BUCKET TEETH	308-309
CANOPY ENCLOSURE KIT	310-311
CLAMP KIT	312-313
CHARGE KIT	314-315
DECALS	316-319
HEATER KIT	320-323
HYDRAULIC BREAKER TOOLS	324-325
BREAKER MOUNTING KIT	326-327
HYDRAULIC BREAKER	328-345
LIGHT KIT	346-347
MOTION ALARM KIT	348-351
PURIFIER MUFFLER	352-353
RENTAL KIT	354-355
RIGHT HAND ENTRY KIT	356-357
SPECIAL APPLICATIONS CAB KIT	358-359
SPECIAL APPLICATIONS CANOPY KIT	360-361
STEEL TRACK KIT	362-363
TOP GUARD KIT	364-365
VINYL CAB ENCLOSURE KIT	366-367
X-CHANGE	368-369
BULK ITEMS	370-371
NUMERICAL	372-420
NUMERICAL ITEMS	372-420

GENERAL INFORMATION

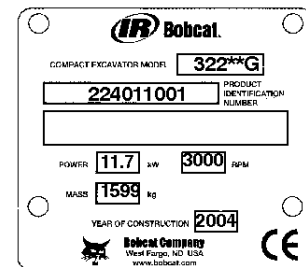
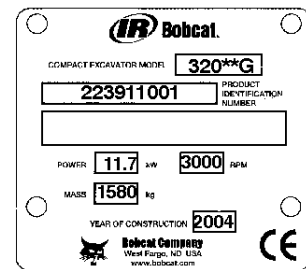
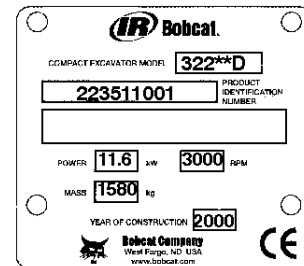
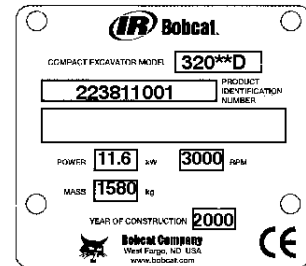
When using the machine serial number, use the complete number.

Some Serial Number breaks are not available at time of printing. These are listed as & Below or & Above.

The number shown in the quantity column in this manual is the number of parts needed for the illustration on the page. For some parts an "x" will be shown in the quantity column. This "x" indicates that the quantity to be used is "As Needed".

When references L.H. and R.H. are used in this manual, it is done from the operator's seat in the forward operating position.

Some of the illustrations and information found in this parts manual were supplied to Bobcat by machine component companies.



ABBREVIATIONS & SYMBOLS

SALES = Order from Gwinner Sales Department

NSS = Not Serviced Separately

NAP = Not Available as Parts

***** = Changed or Added Sections, Pages or Part Numbers

Disposition Code Definition (Found in the Remarks Column)

[A] = Use Up

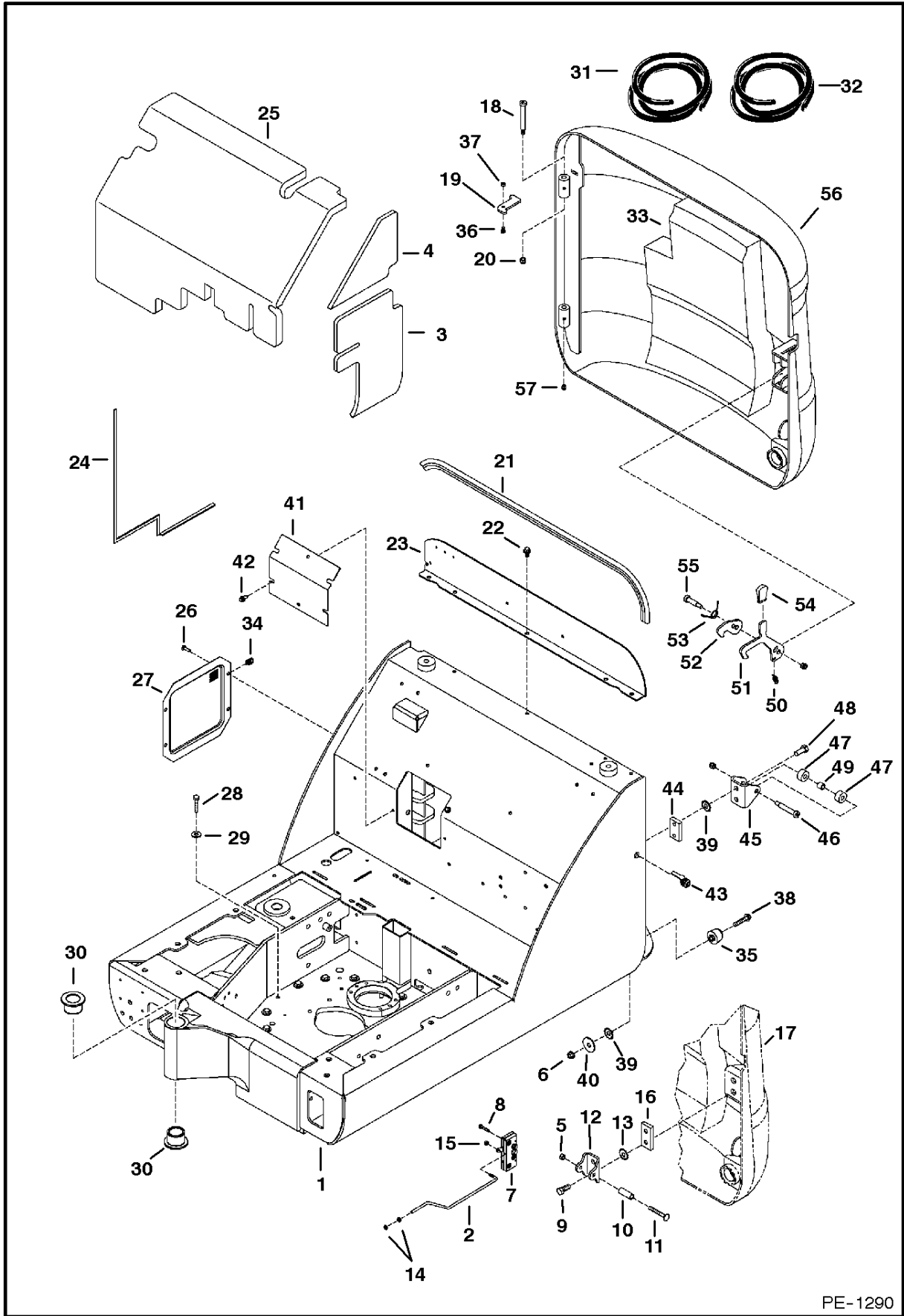
[B] = Use Up on Other Application (See PNI)

[C] = File PDR Report With Bobcat Sales

[D] = Part Number Error

Explications en francais	Grid Nb	3
Erklärungen auf deutsch	Grid Nb	4
Spiegazioni in italiano	Grid Nb	5
Explicaciones en espanol	Grid Nb	6
Verklaring in het Nederlands	Grid Nb	7

UPPERSTRUCTURE & ENGINE COVERS



PE-1290

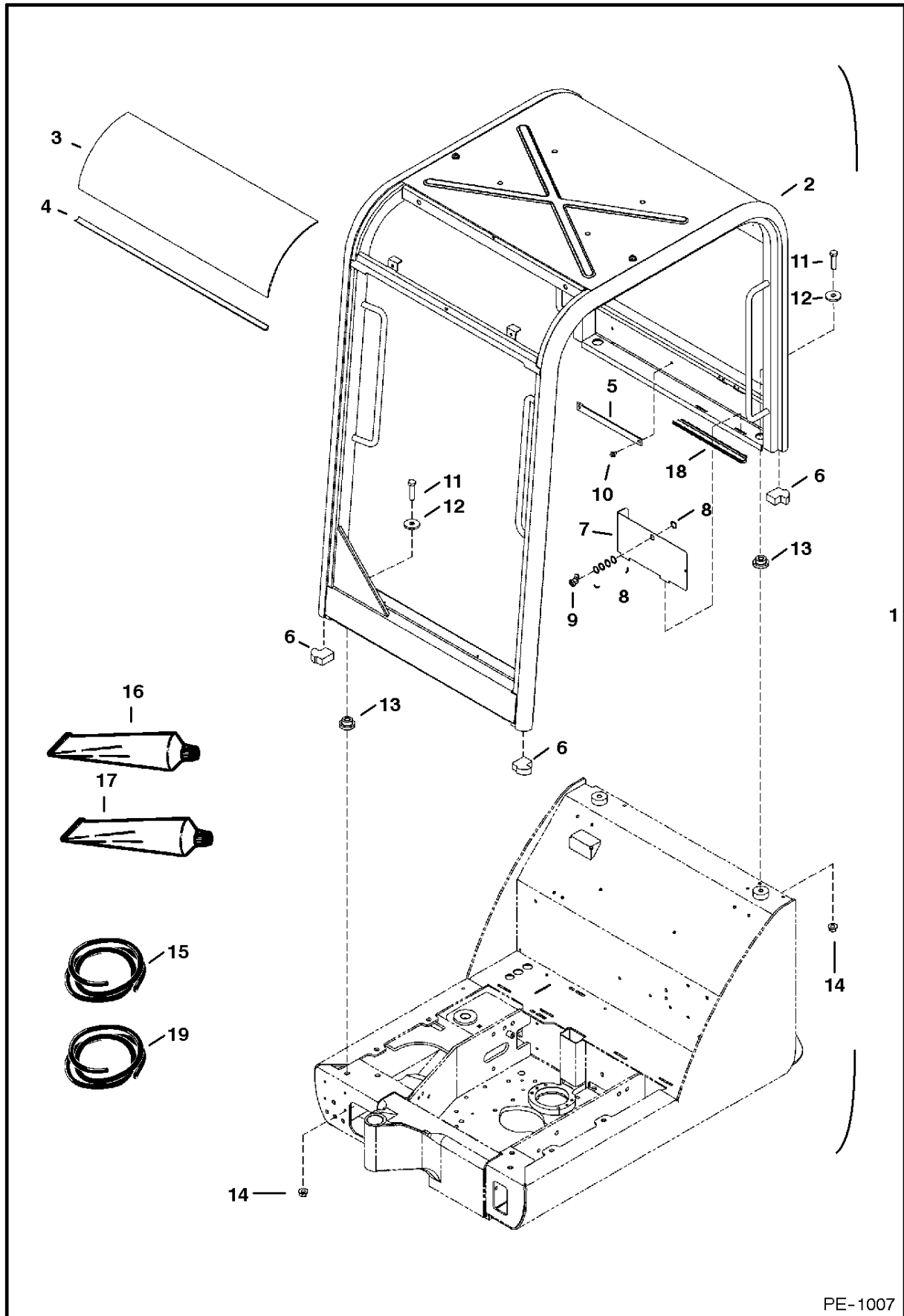
UPPERSTRUCTURE & ENGINE COVERS

Ref.N°	Part N°	Description	Remarks	Serial N°	Qty.
1	NAP)UPPERSTRUCTURE	w/o access hole - order 6810127 & Ref. UPPERSTRUCTURE & ENGINE COVERS(22), UPPERSTRUCTURE & ENGINE COVERS(41) (2) & UPPERSTRUCTURE	223811738 & Bel.	1
1	NAP)UPPERSTRUCTURE	w/access hole-order 6810127 & Ref. UPPERSTRUCTURE & ENGINE COVERS(41) - UPPERSTRUCTURE & ENGINE COVERS(58)	22351173911838	1
1	6810127	UPPERSTRUCTURE		223811839 & Abv.	1
1	6808306	HINGE	weld-on rear door		4
2	6807039	ROD	latch	223811838 & Bel.	1
3	6807607	INSULATION			1
4	6807606	INSULATION			1
5	95D-6	NUT	Was 61D-6 [B]	223811838 & Bel.	1
6	51DM-10	NUT	Was 6512274 [B]		1
7	6675687	LATCH		223811838 & Bel.	1
8	1CM-630	SCREW	Was 1CM-625 [B]	223811838 & Bel.	4
9	17C-820	BOLT		223811838 & Bel.	2
10	6719550	TUBE	striker	223811838 & Bel.	1
11	37C-644	BOLT		223811838 & Bel.	1
12	6719524	STRIKER			1
13	6675273	WASHER	lock	223811838 & Bel.	2
14	7D-4	NUT			2
15	85D-4	NUT	Was 6808027 [A]	223811838 & Bel.	6
16	6719525	BAR	striker	223811838 & Bel.	1
17	6806282	TAILGATE	Was 6808282 [D]	223811838 & Bel.	1
18	6809845	SCREW	Was 38C-856 [A]		2
19	6808706	STOP	tailgate - Was 6714126 [A]		1
20	59D-6	NUT			2
21	NAP	SEAL	39" of Ref. UPPERSTRUCTURE & ENGINE COVERS(31)		1
22	26GM-10020	SCREW			5
23	6806387	CROSSMEMBER		223811795 & Bel.	1
23	6810633	CROSSMEMBER		223811796 & Abv.	1
24	NAP	SEAL	38" of Ref. UPPERSTRUCTURE & ENGINE COVERS(32)		1
25	6807605	INSULATION		223811738 & Bel.	1
25	6810320	INSULATION		223811739 & Abv.	1
26	6808033	SCREW			4
27	6807519	SCREEN			1
28	56CM-1045	SCREW	Was 10CM-1045 (B)		16
29	27E-6	WASHER			15
30	6539897	BUSHING			2
31	6675732	SEAL	Bulk - Order by the foot - Was 6676395 [D]		x
32	6648416	SEAL	Bulk - Order by the foot		x
33	6808117	INSULATION	Tailgate		1
34	6676026	NUT			4
35	6808365	BUMPER			1
36	1CM-612	SCREW			1
37	4DM-6	NUT			1
38	29CM-1050	SCREW			1
39	6560899	WASHER			1
40	6675273	WASHER			1
41	6810152	COVER		223811739 & Abv.	1
42	26GM-8020	SCREW			1
43	6678025	LOCK		223811839 & Abv.	1
44	6810802	STRIKER		223811839 & Abv.	1
45	6809727	CHANNEL		223811839 & Abv.	1

UPPERSTRUCTURE & ENGINE COVERS

Ref.N°	Part N°	Description	Remarks	Serial N°	Qty.
46	38C-840	BOLT		223811839 & Abv.	1
47	6809726	ROLLER		223811839 & Abv.	1
48	17C-820	BOLT		223811839 & Abv.	1
49	6809734	BUSHING		223811839 & Abv.	1
50	6810141	SPRING		223811839 & Abv.	1
51	NAP	HANDLE	order 6811909 & 6811910	223812077 & Bel.	1
52		6811909inD1}<	HANDLE		999
53	NAP	LATCH	order 6811910 & 681909	223812077 & Bel.	1
53	6733667	LATCH	Was 6811910 [A]	223812078 & Abv.	1
54	6810132	SPRING		223811839 & Abv.	1
55	6564452	GRIP	lever	223811839 & Abv.	1
56	38C-824	SCREW		223811839 & Abv.	1
57	6810131	TAILGATE		223811839 & Abv.	1
58	10H-25	GREASE ZERK		223811839 & Abv.	1

OPERATOR CANOPY

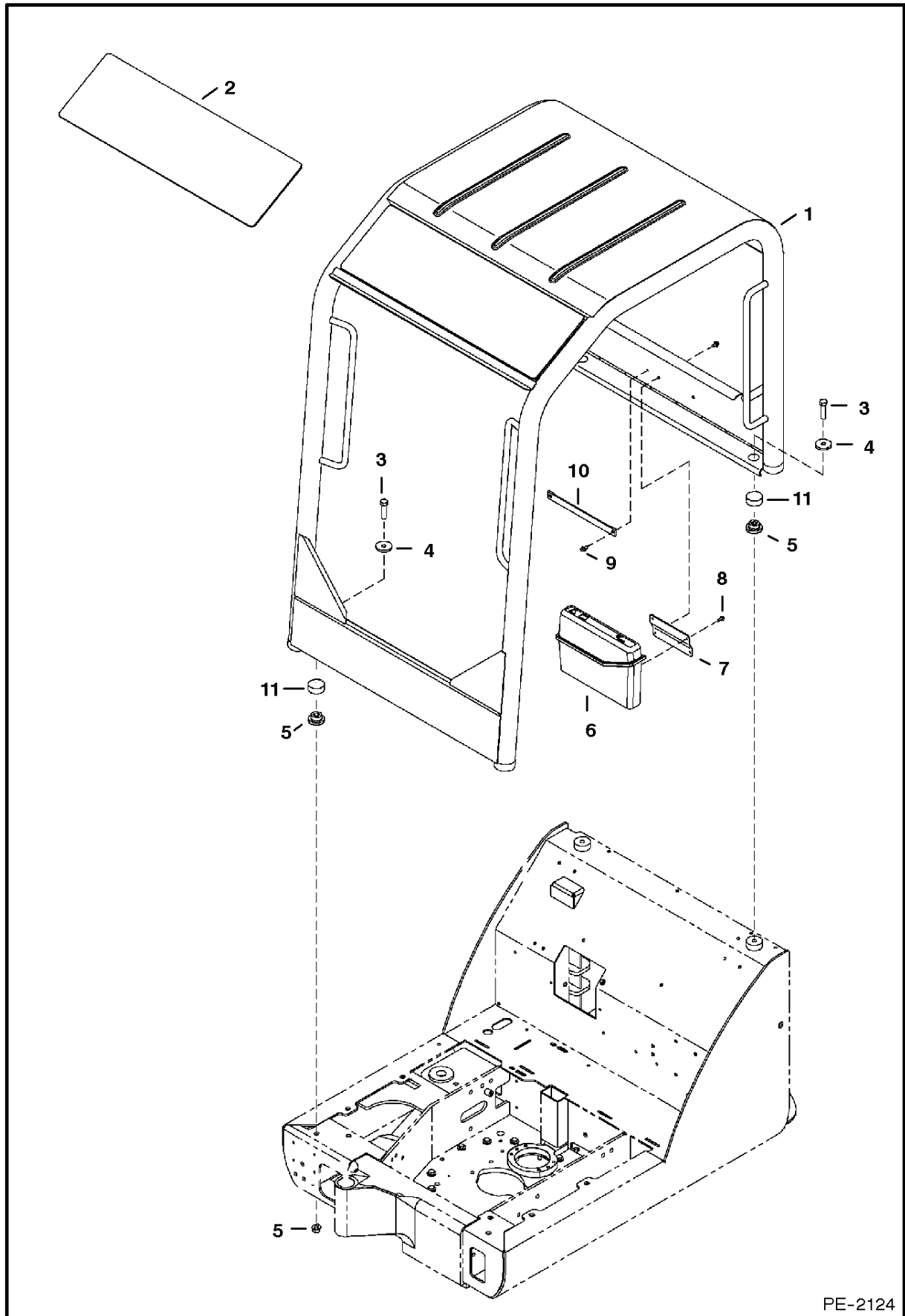


PE-1007

OPERATOR CANOPY

Ref.N°	Part N°	Description	Remarks	Serial N°	Qty.
1	NAP	CANOPY ASSY	W/Ref. OPERATOR CANOPY(2)-OPERATOR CANOPY(14), and decals - order 6817851 - Was 6808864 [A]		1
2	NAP	CANOPY	welded assembly - order 6810595 - Was 6805906 [A]		1
3	6805903	WINDOW			1
4	NAP	SEAL	Use 36" of Ref. OPERATOR CANOPY(15)		1
5	6589347	STRAP			4
6	6807987	INSULATION			1
7	6589656	PANEL			1
8	6536802	WASHER			5
9	6675723	LOCK	assy		1
9	6675843	NUT			1
9	6709527	KEY			1
10	26GM-8016	SCREW	Was 29CM-812 [B]		2
11	10CM-1455	SCREW	Was 10CM-1460 [B]		4
12	6805244	WASHER			4
13	6804026	MOUNT			4
14	43DM-14	NUT			4
15	6670537	SEAL	bulk - sold by the foot		x
16	6808882	ADHESIVE			x
17	6808881	DEGREASER	for Ref. OPERATOR CANOPY(16)		x
18	NAP	INSULATION	use 4" of Ref. OPERATOR CANOPY(9)		1
19	6648416	SEAL	bulk - sold per foot		x

OPERATOR CANOPY

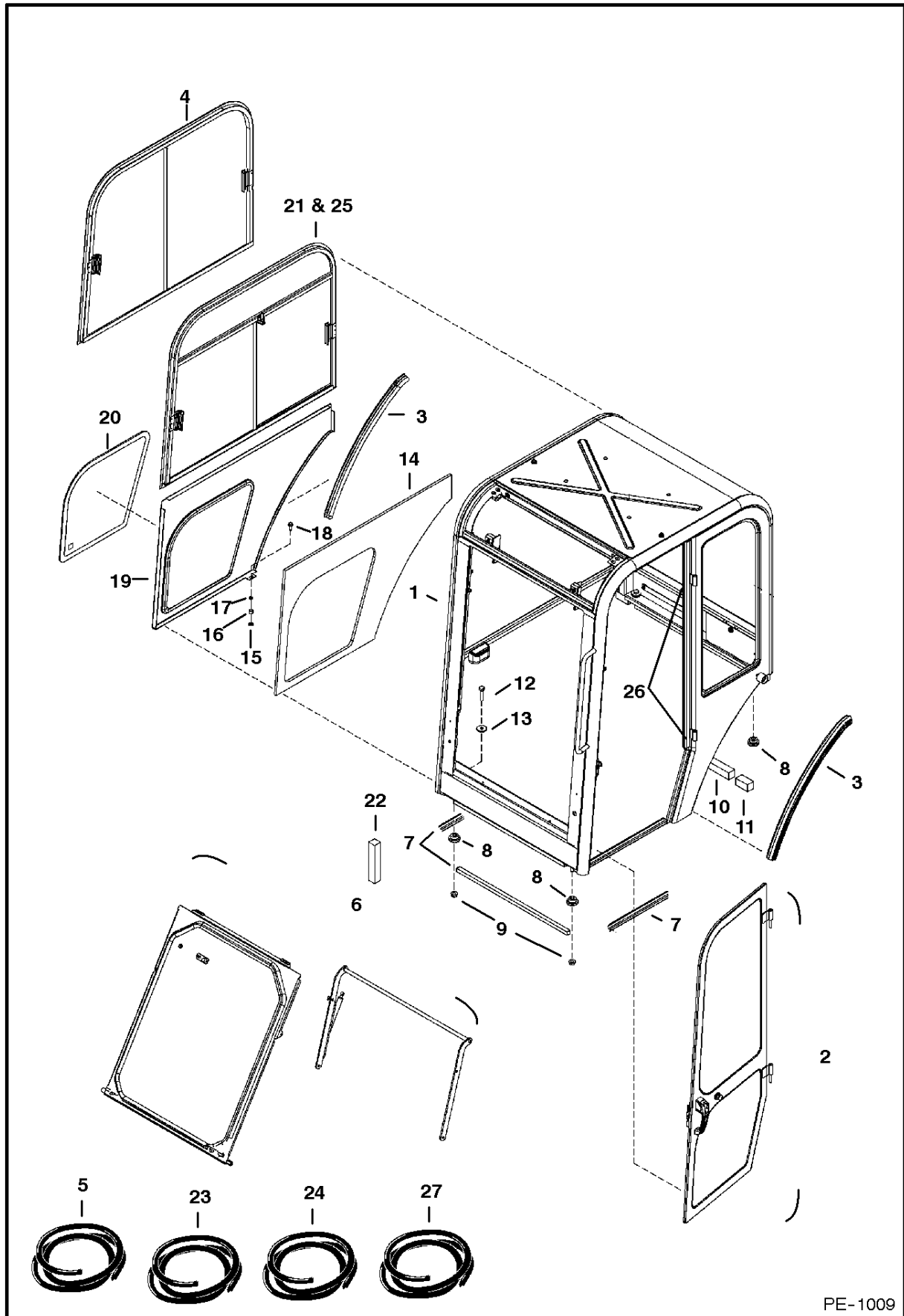


PE-2124

OPERATOR CANOPY

Ref.N°	Part N°	Description	Remarks	Serial N°	Qty.
1	6812243	CANOPY	W/A		1
2	6811918	WINDOW	roof		1
3	10CM-1455	SCREW			4
4	6805244	WASHER	flat		4
5	6804026	MOUNT			4
6	6708827	CONTAINER	manual		1
7	6813083	BRACKET			1
8	6702642	BOLT			2
9	26GM-8016	SCREW			4
10	6589347	STRAP	elastic		1
11	6816135	INSULATION			4

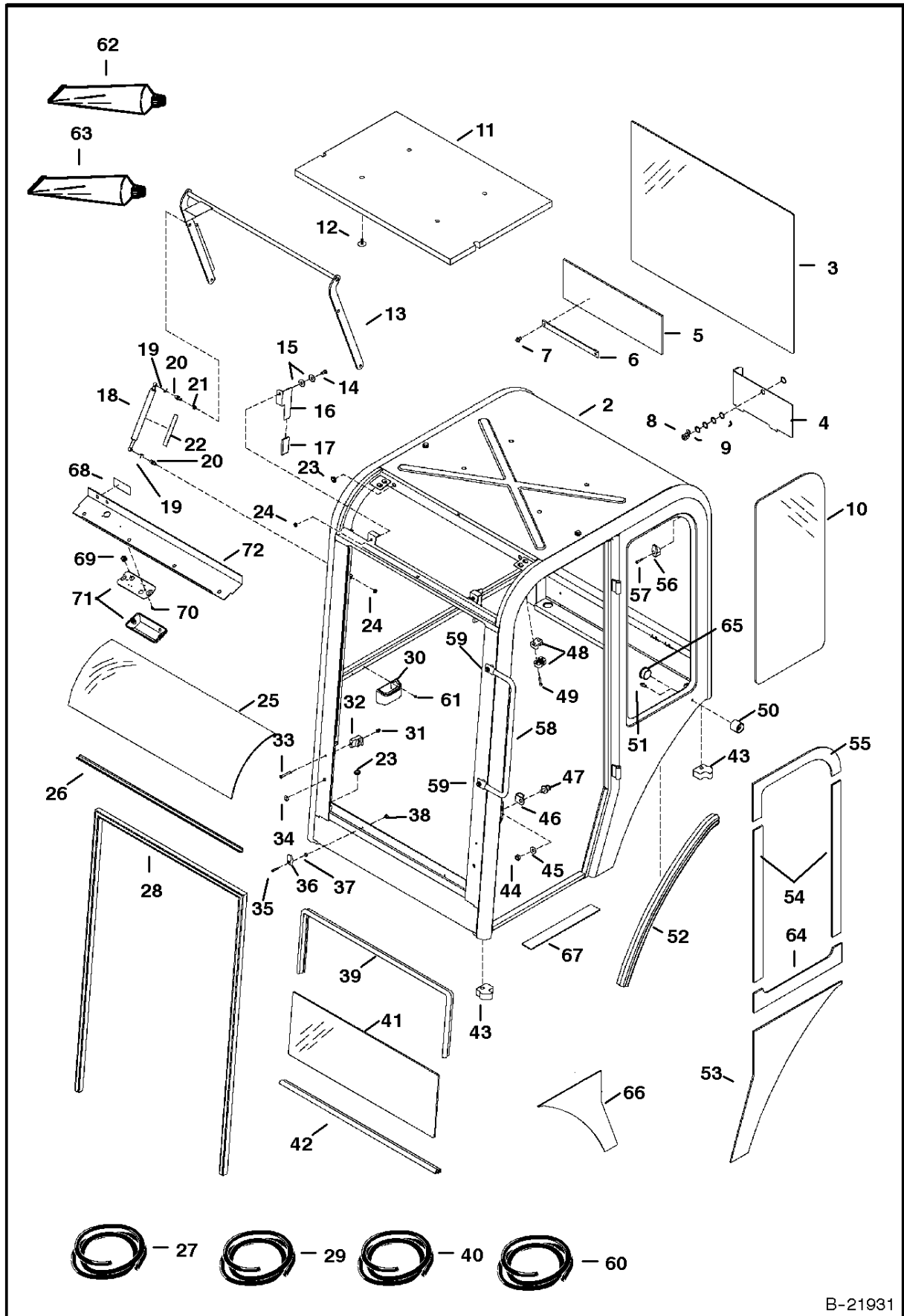
OPERATOR CAB



OPERATOR CAB

Ref.N°	Part N°	Description	Remarks	Serial N°	Qty.
1	6805882	CAB	Welded assembly - See Page OPERATOR CAB(1)		1
1	NAP	SEAL	bottom sliding, use 87" (2209,8mm) of Ref. OPERATOR CAB(23)		x
1	NAP	SEAL	sides & top, use 110" (2794mm) of Ref. OPERATOR CAB(24)		x
1	NAP	WIPER	use 32" (813mm) per window of Ref. OPERATOR CAB(27)		x
2		DOOR ASSY	See Page OPERATOR CAB(4)		1
3	NSS	SEAL	Use 29" (736,6mm) of Ref. OPERATOR CAB(5)		2
4	NAP	WINDOW	order Ref. OPERATOR CAB(21) - Was 6805894 [A]	223811744 & Bel.	1
4	6676981	WINDOW	front		1
4	6676982	WINDOW	rear		1
4	6677141	LATCH	rear		1
4	6677142	LATCH	rear		1
5	6807611	SEAL	Bulk		x
6		WINDOW	See Page OPERATOR CAB(2)		2
7	6808577	SEAL			3
8	6804026	MOUNT			4
9	43DM-14	NUT			4
10	6808576	SEAL			1
11	6808575	SEAL			2
12	10CM-1455	SCREW	Was 10CM-1460 [A]		4
13	6805244	WASHER			4
14	6807786	INSULATION			1
15	6674264	RETAINER			2
16	6503451	SPACER			2
17	15EM-100	WASHER			2
18	26GM-10030	SCREW			2
19	6805888	PANEL			1
20	6806460	WINDOW			1
21	NAP	WINDOW	assy - right hand sliding - order 6680997 - Was 6810369 [A]	223811745 -12662	1
21	NAP	LATCH KIT	order 6683815		1
21	NAP	WINDOW	rear - Was 6678744 [A]		1
21	NAP	WINDOW	front - Was 6678745 [A]		1
21	NAP	SEAL	bottom sliding, use 87" (2209,8mm) of Ref. OPERATOR CAB(23)		x
21	NAP	SEAL	sides & top, use 178" (4521mm) of Ref. OPERATOR CAB(24)		x
21	NAP	WIPER	use 24" (610mm) per window of Ref. OPERATOR CAB(27)		x
22	6809430	INSULATION			1
23	6680147	SEAL	bulk - sold per foot		x
24	6680146	SEAL	bulk - sold per foot		x
25	6680997	WINDOW	assy - right hand sliding	223812663 & Abv.	1
25	6683813	WINDOW	front		1
25	6683814	WINDOW	rear		1
25	6683815	LATCH	kit		1
26	6807255	HINGE	weld-on		2
27	6680148	WIPER	bulk - sold per foot		x

OPERATOR CAB



B-21931

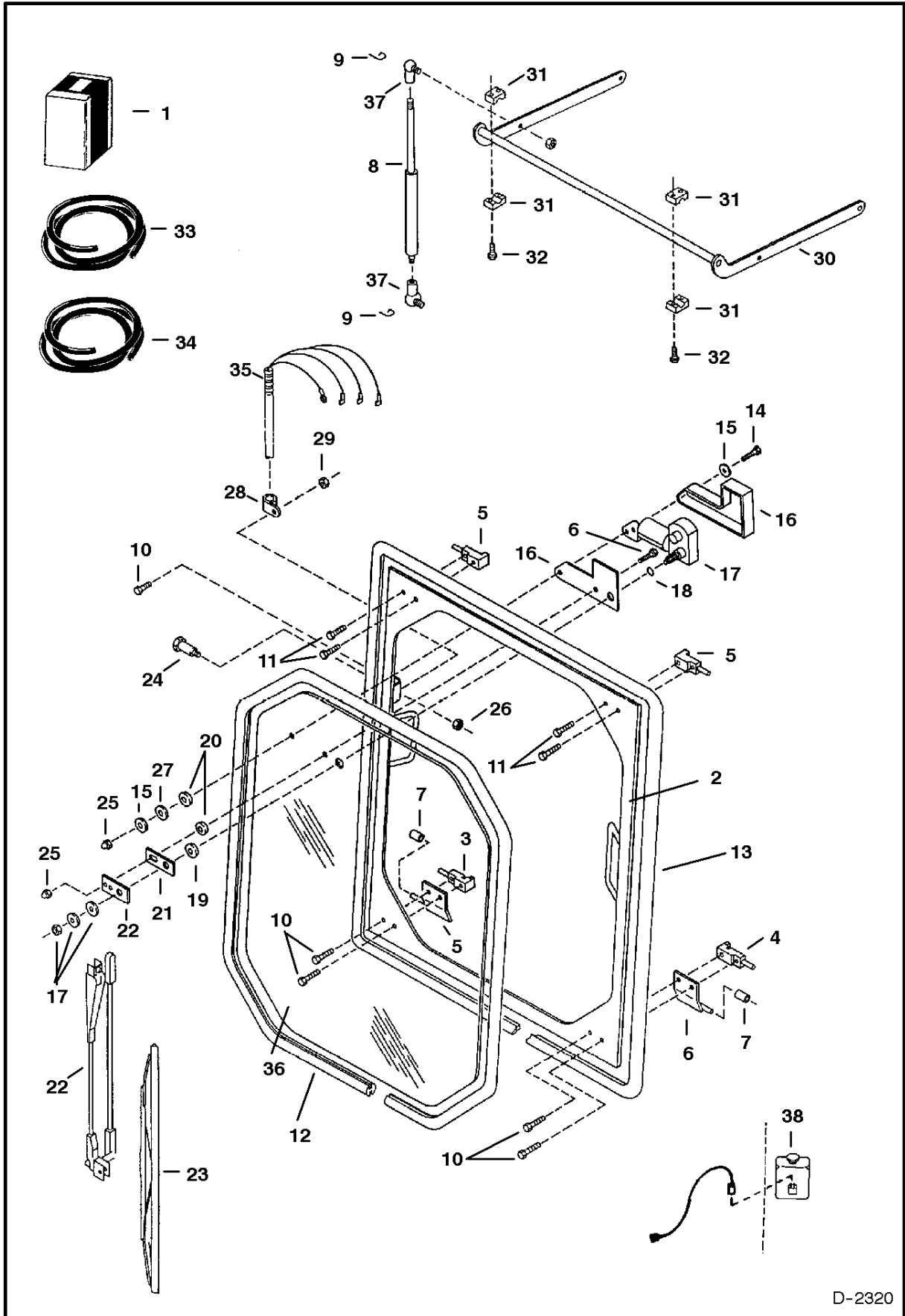
OPERATOR CAB

Ref.N°	Part N°	Description	Remarks	Serial N°	Qty.
1	6808866	CAB ASSY	W/Ref. OPERATOR CAB(2)-OPERATOR CAB(60), See Page OPERATOR CAB(20), Ref. OPERATOR CAB(2)-OPERATOR CAB(20) and decals		1
2	6805882	CAB	See Page OPERATOR CAB(1)		1
3	6664172	WINDOW	rear		1
4	6589656	PANEL			1
5	6808432	INSULATION			1
6	6589347	STRAP			1
7	26GM-8016	SCREW			2
8	6675723	LOCK	assy.		1
8	6675843	NUT			1
8	6709527	KEY			1
9	6536802	WASHER			5
10	6806459	WINDOW	side, left		1
11	6628899	INSULATION	headliner		1
12	6664559	FASTENER			4
13	6803154	LINKAGE			1
14	6800857	BOLT			2
15	6630038	WASHER			4
16	6801032	HANDLE	L.H.		1
17	6670760	GRIP			2
18	6667199	GAS SPRING			1
19	6649245	CLIP			2
20	6649244	BALL STUD			2
21	4E-5	WASHER			1
22	6577754	DECAL	warning		1
23	6664562	GROMMET			2
24	87D-5	NUT			3
25	6805903	WINDOW	curved		1
26	NAP	SEAL	use 36" of Ref. OPERATOR CAB(27)		1
27	6670537	SEAL	bulk - sold per foot		x
28	NAP	SEAL	use 11" of Ref. OPERATOR CAB(29)		1
29	6670759	SEAL	bulk - sold per foot		x
30	6664075	ASH TRAY			1
31	6664056	NUT			2
32	6800651	MOUNT	glass		2
33	6664066	BOLT			2
34	6670761	CAP			1
35	6801188	SCREW			2
36	6804758	RETAINER	glass		2
37	6664085	BUSHING			4
38	6664103	NUT			2
39	NAP	SEAL	use 5' of Ref. OPERATOR CAB(40)		1
40	6664088	SEAL	bulk - sold per foot		x
41	6800637	WINDOW	front		1
42	NAP	SEAL	use 3' of Ref. OPERATOR CAB(40)		x
43	6807987	INSULATION			4
44	61D-7	NUT			1
45	27E-6	WASHER			1
46	6664083	COVER			1
47	6654170	STRIKER BOLT	striker		1
48	6664560	BLOCK			4
49	29G-420	SCREW			4
50	6675386	SOCKET	hold open		1
51	17C-508	BOLT			1
52	NAP	SEAL	use 29' of Ref. OPERATOR CAB(60)		x

OPERATOR CAB

Ref.N°	Part N°	Description	Remarks	Serial N°	Qty.
53	6808442	INSULATION		& Below	1
54	6808443	INSULATION			2
55	6808444	INSULATION			1
56	6658289	HOOK	coat		1
57	6808424	SCREW			1
58	6809112	GRAB HANDLE			1
59	29CM-820	BOLT			2
60	6807611	SEAL	bulk - sold per foot		x
61	6706517	SCREW	Was 58G-806 [A]		2
62	6808882	ADHESIVE			1
63	6808881	DEGREASER			1
64	6810463	INSULATION		& Above	1
65	6648391	PLUG		& Above	1
66	6809803	INSULATION		& Above	1
67	6588953	SAFETY TREAD		& Above	1
68	6808665	DECAL			1
69	1303932	GROMMET			1
70	58G-806	SCREW			1
71	6664084	DOME LIGHT			1
71	6665367	BULB			1
72	6628898	CONSOLE			1

OPERATOR CAB (Front Window)

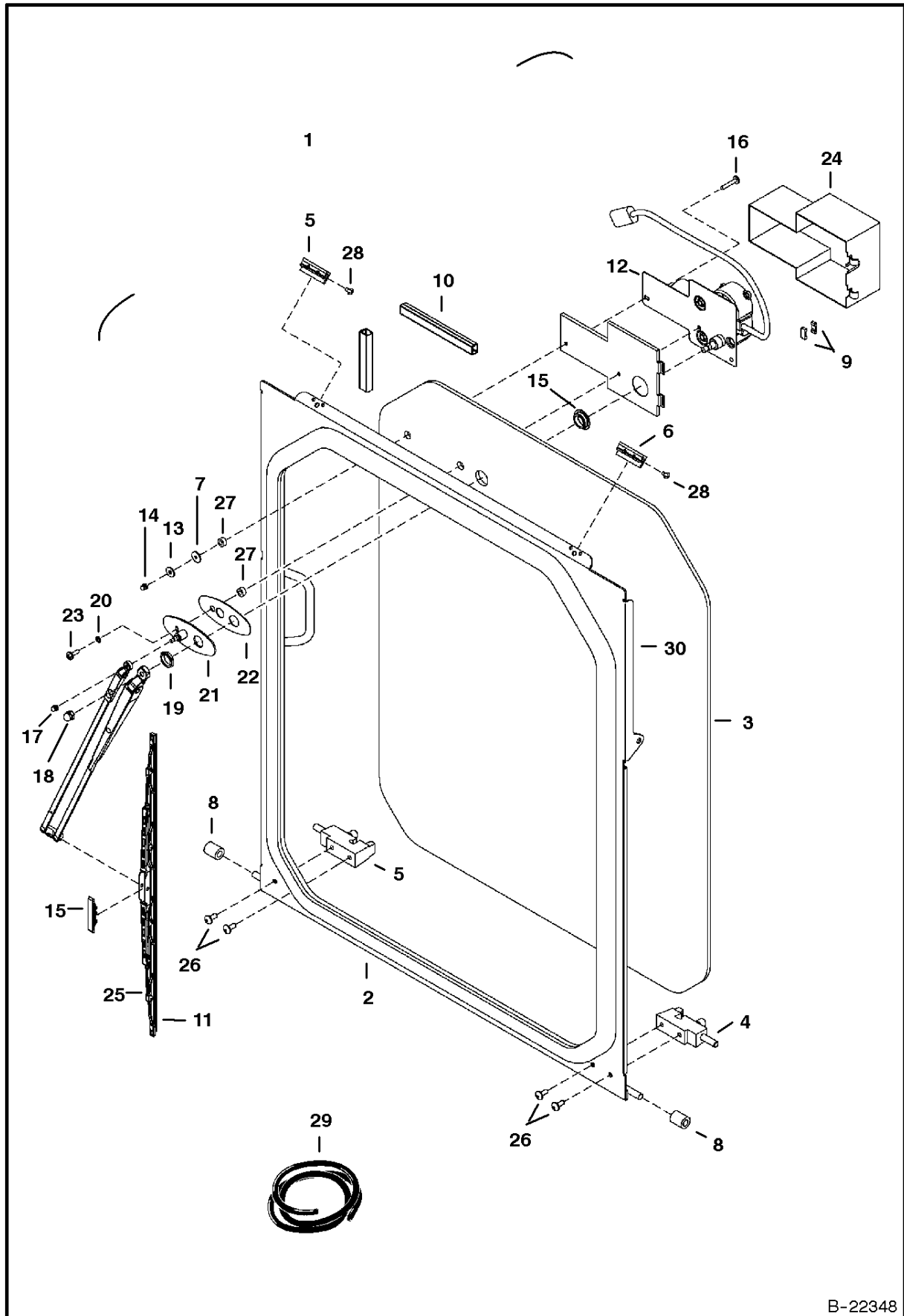


D-2320

OPERATOR CAB

Ref.N°	Part N°	Description	Remarks	Serial N°	Qty.
1	NAP	WINDOW ASSY	Incl. Ref. OPERATOR CAB(1)-OPERATOR CAB(6), OPERATOR CAB(10)-OPERATOR CAB(17), OPERATOR CAB(19)-OPERATOR CAB(23), OPERATOR CAB(1
2	NAP	FRAME	order 6813673 & (2) 6680971 - Was 6800876 [A]		1
3	6801502	LATCH	R.H.		1
3	6628889	HANDLE			1
4	6801503	LATCH	L.H.		1
4	6628889	HANDLE			1
5	6801420	CHANNEL			2
6	6801188	SCREW			1
7	6800873	ROLLER			1
8	6667199	GAS SPRING			1
9	6649245	CLIP	Ball Joint Retainer		2
10	6667196	BOLT	5/8' long		5
11	6630207	RIVET			4
12	NAP	SEAL	Use 119' (3018mm) of Ref. OPERATOR CAB(33)		1
13	NAP	SEAL	Use 180' (4572mm) of Ref. OPERATOR CAB(34)		1
14	6664566	SCREW			2
15	6664065	WASHER			2
16	6664177	COVER	Wiper Motor		1
17	6668137	MOTOR	Single Speed		1
18	6664098	O-RING	Wiper Motor Shaft		1
19	6667201	SPACER			1
20	6664085	BUSHING			2
21	6664178	GASKET			1
22	6664095	ARM	Wiper - W/Pivot Mount		1
23	6664096	BLADE	Wiper		1
24	6800857	BOLT			2
25	6664103	NUT			2
26	6648364	NUT			2
27	6801059	WASHER			1
28	30H-21	CLAMP			1
29	6669138	NUT			1
30	6803154	LINKAGE			1
31	6664560	BLOCK	Linkage Mount		2
32	6664059	BOLT			4
33	6514301	SEAL	Bulk - Sold Per Foot		x
34	6675410	SEAL)Bulk-Sold Per Ft-Was 6670759 [A]		x
35	6669142	HARNESS	Wiper	223812719 & Bel.	1
35	6813745	HARNESS	Wiper	223812720 & Abv.	1
35	6669141	HARNESS	Cab		1
36	6667195	GLASS			1
37	6649244	BALL STUD			2
38	6664438	WASHER	Assy.		1
38	6664554	PUMP			1
38	NAP	TANK	Order Ref. OPERATOR CAB(38)		1
38	6664555	NOZZLE	Window washer		1
38	6664556	HOSE			1

OPERATOR CAB (Front Window)

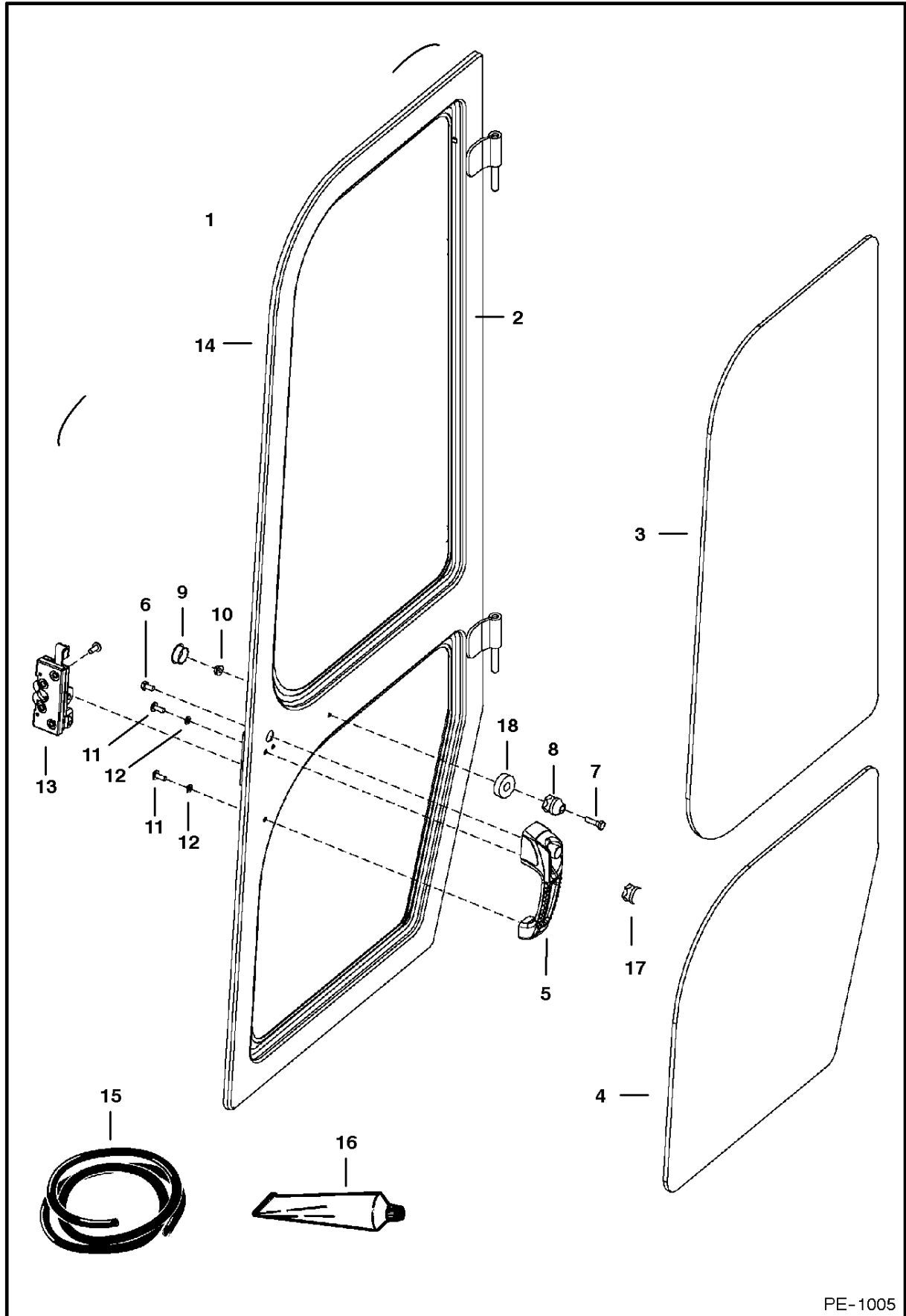


B-22348

OPERATOR CAB

Ref.N°	Part N°	Description	Remarks	Serial N°	Qty.
1	6807874	WINDOW	assy		1
2	NAP	SEAL	bulk - sold per foot - Order 119" (3018)mm of Ref. OPERATOR CAB(29)		x
3	6813674	WINDOW	front		1
4	6801503	LATCH	L.H.		1
5	6801502	LATCH	R.H.		1
6	6801420	CHANNEL			2
7	6801059	WASHER			1
8	6800873	ROLLER			2
9	6730849	SEAL	foam		2
10	6680971	RETAINER	wire		2
11	6680180	ARM	wiper		1
12	6679476	MOTOR	wiper		1
13	6678739	WASHER	flat		2
14	6678198	BOLT			1
15	6677847	GROMMET	rubber		1
16	6677845	ADAPTER	blade		1
17	6677844	NUT			1
18	6677843	NUT			1
19	6677842	NUT			1
20	6677841	WASHER			1
21	6677840	SWIVEL ASSY			1
22	6677839	GASKET	swivel		1
23	6677837	BOLT			1
24	6677836	MOTOR	motor		1
25	6677834	BLADE	wiper		1
26	6667196	BOLT			4
27	6664085	BUSHING	nylon		2
28	6630207	RIVET			4
29	6514301	SEAL	bulk - sold per foot		x
30	6813673	FRAME	window		1

OPERATOR CAB (Door)

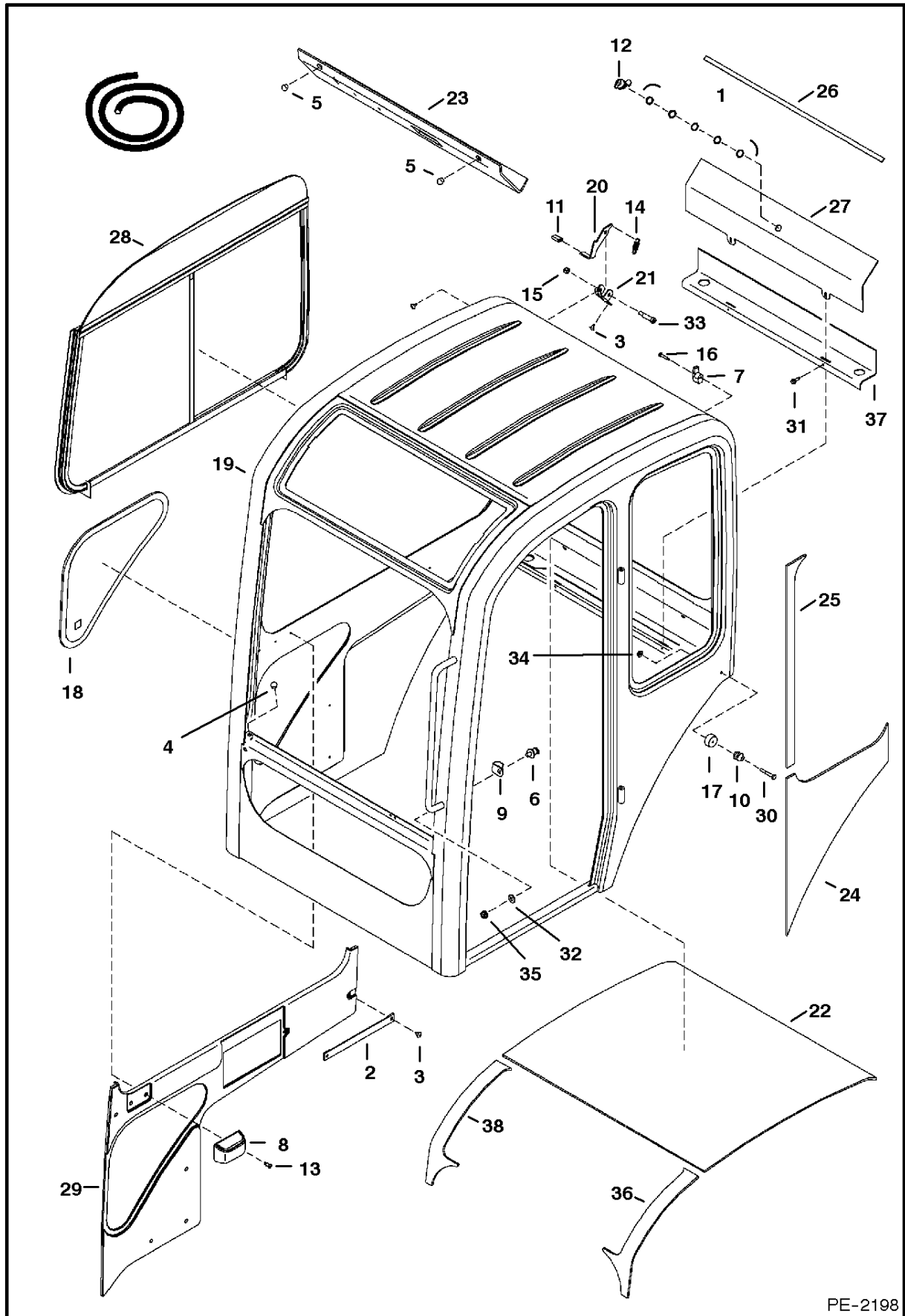


PE-1005

OPERATOR CAB

Ref.N°	Part N°	Description	Remarks	Serial N°	Qty.
1	6807782	DOOR ASSY	assy - Ref. OPERATOR CAB(2) - OPERATOR CAB(14) - Was 6805226 [D]		1
1	6805474	HINGE	weld-on		2
2	6805469	DOOR			1
3	6805470	GLASS	Upper		1
4	6805471	GLASS	Lower		1
5	6674667	HANDLE	Was 6675282 [D]		1
5	6709527	KEY			1
6	17C-408	BOLT			1
7	17C-416	BOLT			1
8	6675385	PLUG	hold open		1
9	6648391	PLUG	hole		1
10	55D-4	NUT			1
11	6803202	SCREW			5
12	6EM-60	WASHER			2
13	6674666	LATCH			1
14	NAP	SEAL	door - Order Ref. OPERATOR CAB(15) - 158" (4013,2 mm) long		1
15	6675410	SEAL	bulk=com3IE }H~10{M		x
16	6675462	URETHANE	10.5 oz. tube, black		x
17	6675386	SOCKET	hold open		1
18	6808446	SPACER			1

OPERATOR CAB

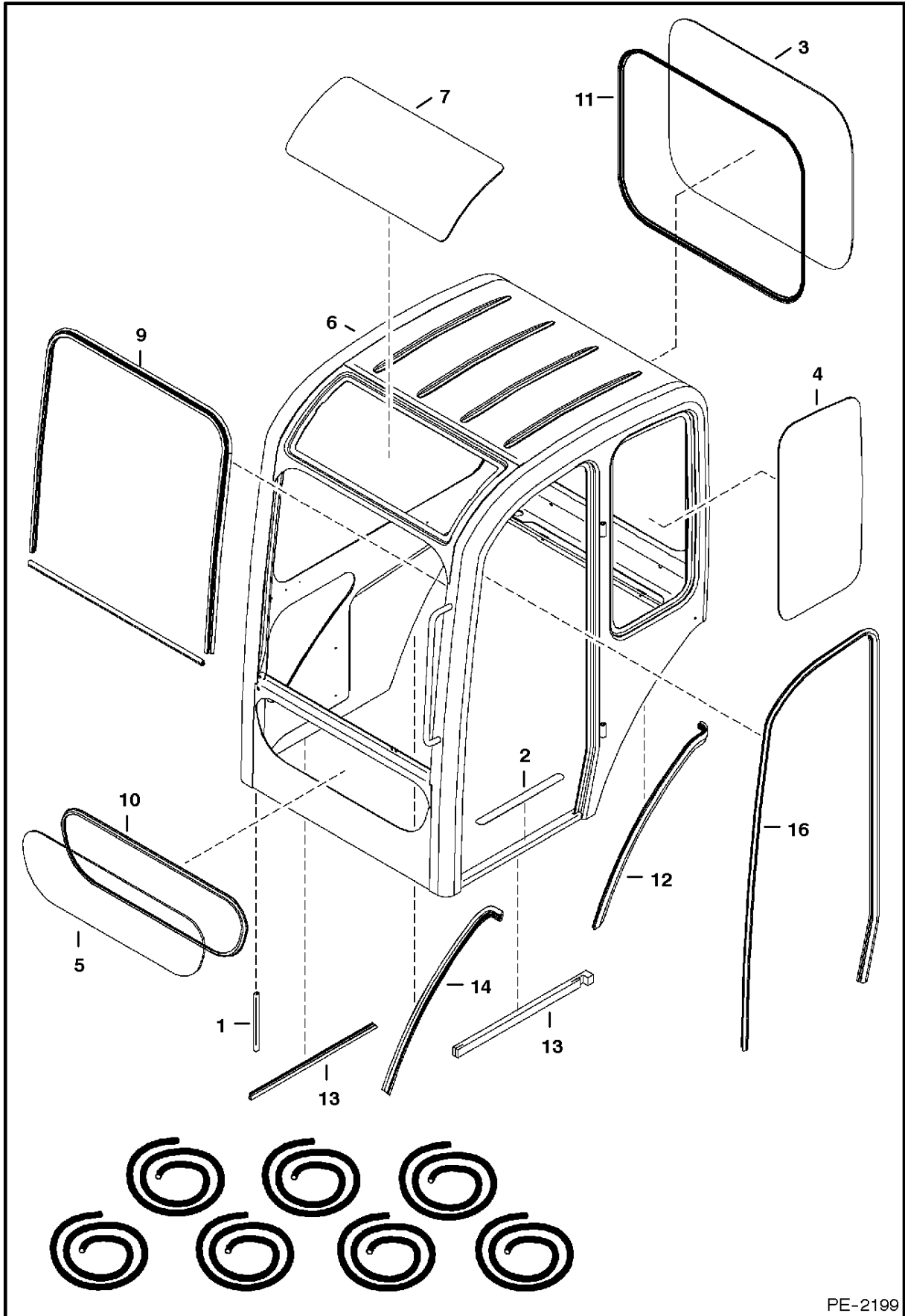


PE-2198

OPERATOR CAB

Ref.N°	Part N°	Description	Remarks	Serial N°	Qty.
1	6536802	WASHER			5
2	6589347	STRAP	elastic		1
3	6589675	SCREW			4
4	6597572	BUMPER			4
5	6630207	RIVET			2
6	6654170	STRIKER BOLT			1
7	6658289	HOOK	coat		1
8	6664075	ASH TRAY			1
9	6664083	COVER			1
10	6675385	PLUG			1
11	6677500	COVER			1
12	6681922	LATCH			1
13	6706517	SCREW			1
14	6714210	SPRING			2
15	59D-5	NUT	lock		1
16	6808424	SCREW			1
17	6808446	SPACER			1
18	6811792	WINDOW	R.H.		1
19	6812035	CAB			1
20	6814721	HANDLE	latch		1
21	6814724	CHANNEL			1
22	6816185	INSULATION	roof		1
23	6816186	INSULATION	rear		1
24	6816187	INSULATION	side		1
25	6816189	INSULATION			1
26	6816341	SEAL			1
27	6816342	COVER	rear		1
28	7100571	WINDOW			1
29	7101010	INSULATION	right		1
30	1C-428	SCREW			1
31	26GM-6020	SCREW			2
32	27E-6	WASHER			1
33	38C-620	SCREW			1
34	55D-4	NUT			1
35	55D-7	NUT			1
36	6818362	INSULATION	R.H. - front		1
37	6817521	PAD			1
38	6818275	INSULATION	R.H. - front		1

OPERATOR CAB

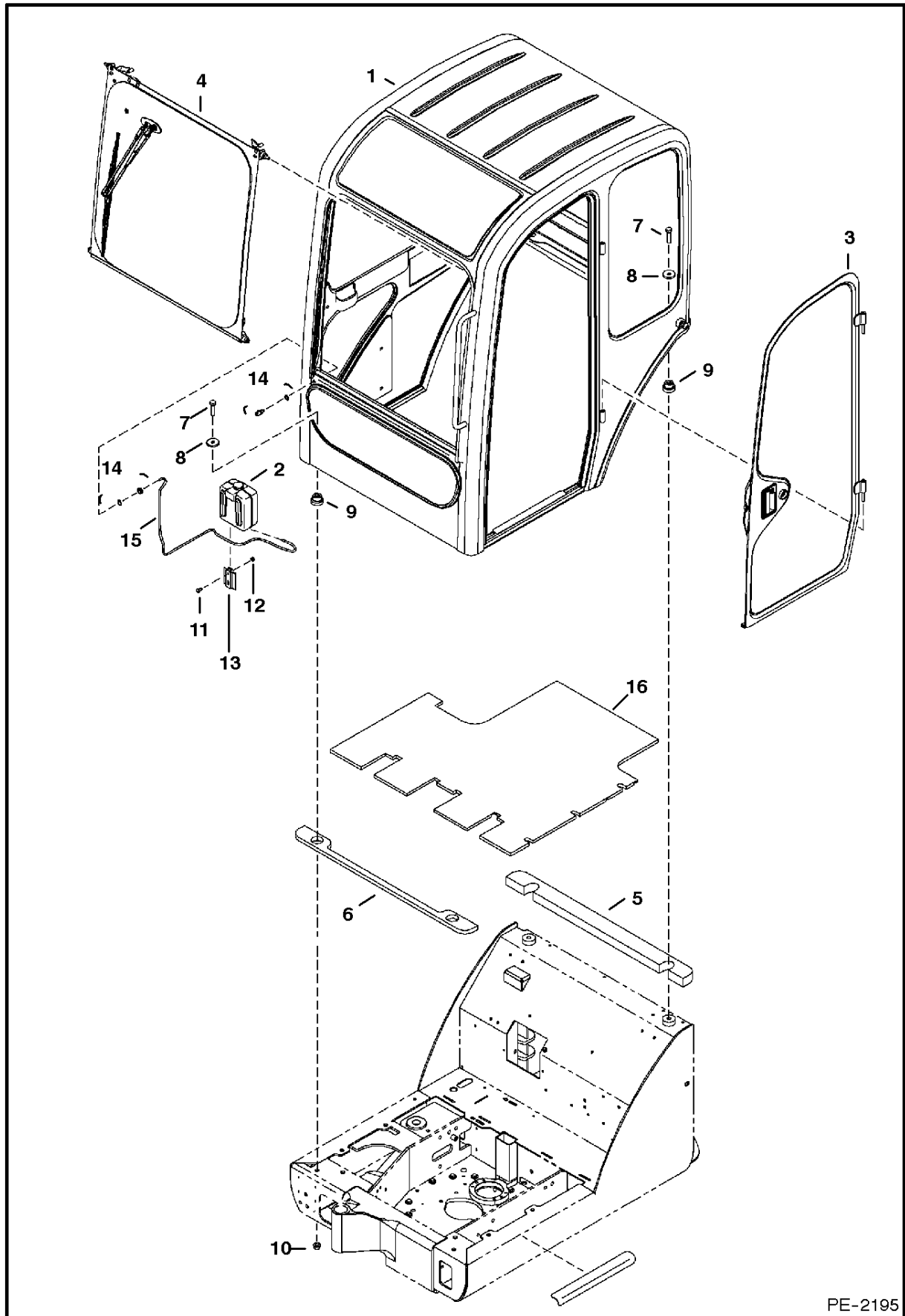


PE-2199

OPERATOR CAB

Ref.N°	Part N°	Description	Remarks	Serial N°	Qty.
1	6682740	RETAINER			1
2	6807327	TREAD			1
3	6811929	WINDOW	rear		1
4	6811930	WINDOW	L.H.		1
5	6811937	WINDOW	lower		1
6	6812035	CAB			1
7	6817370	WINDOW	top		1
8	7100026	SEAL	cab - front		1
9	7100027	SEAL	cab - front window		1
10	7100028	SEAL	cab - front		1
11	7100029	SEAL	rear		1
12	7100033	SEAL	cab		1
13	7101051	SEAL			1
14	7101488	SEAL	cab		1
15	7101490	SEAL	cab		1
16	6814806	SEAL	cab		1

OPERATOR CAB

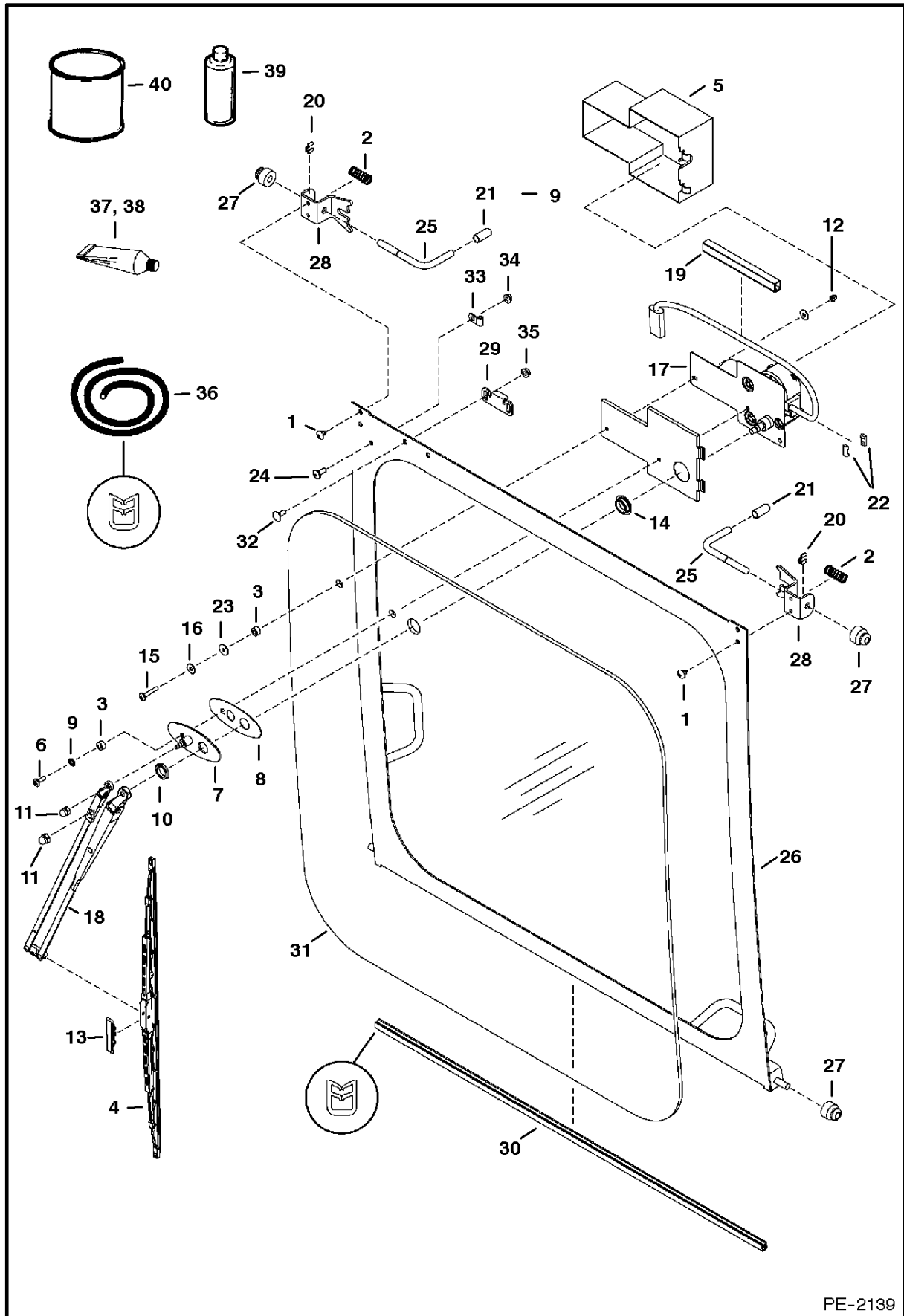


PE-2195

OPERATOR CAB

Ref.N°	Part N°	Description	Remarks	Serial N°	Qty.
1	6812035	CAB	w/a		1
2	6664438	WASHER	kit - W/Ref. OPERATOR CAB(14) & OPERATOR CAB(15)		1
2	6664554	PUMP			1
2	NAP	TANK	order Ref. OPERATOR CAB(2)		1
3	6810944	DOOR	assy - See page		1
4	6816165	WINDOW	front assy - See page		1
5	6816177	SEAL			1
6	6816176	SEAL			1
7	10CM-1455	SCREW			4
8	6805244	WASHER			4
9	6804026	MOUNT			4
10	43DM-14	NUT			2
11	6667196	BOLT			2
12	61D-4	NUT			2
13	6664557	BRACKET	tank		1
14	6664555	NOZZLE			1
15	6664556	HOSE			1
16	6807328	FLOORMAT			1

OPERATOR CAB (Front Window)

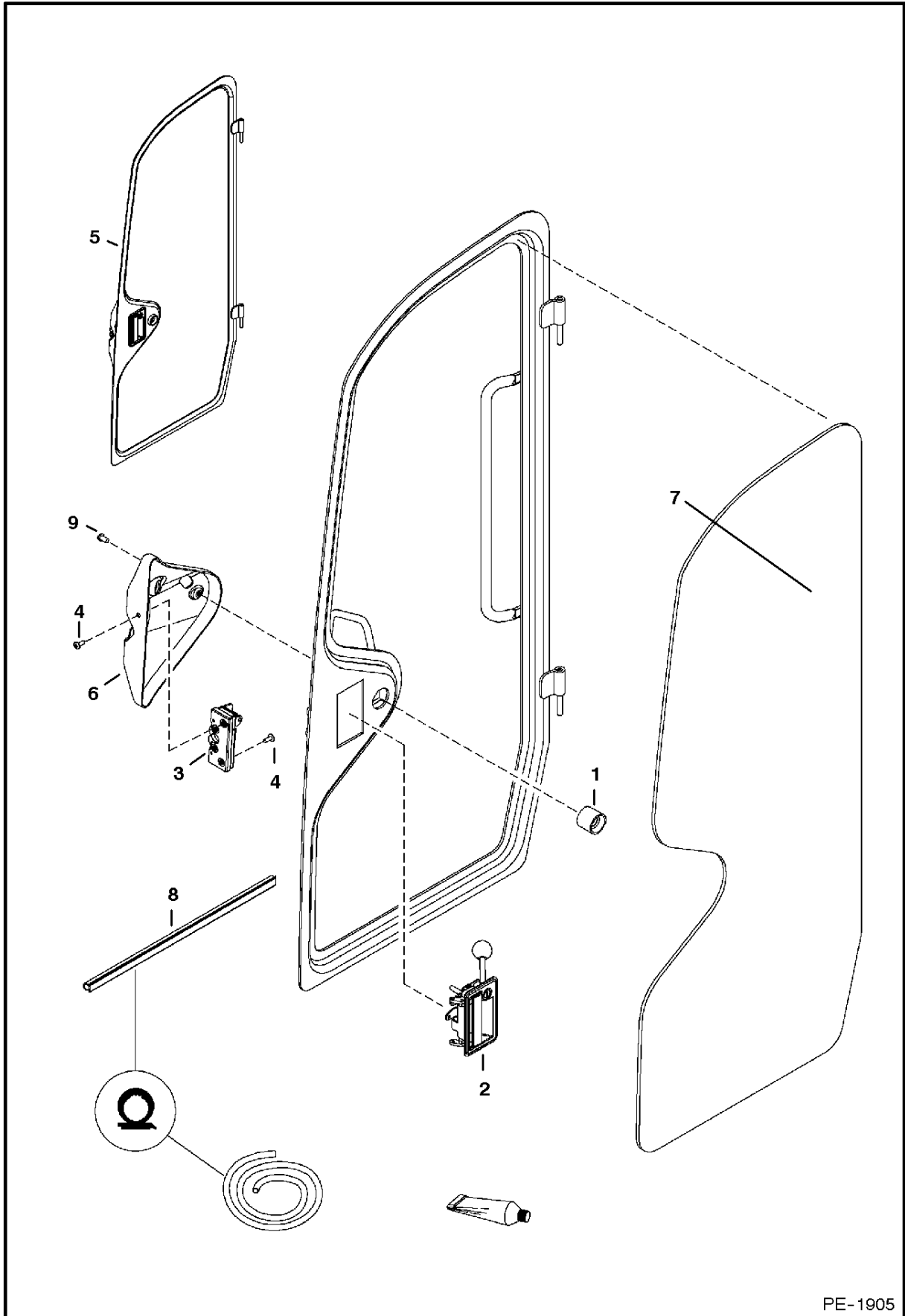


PE-2139

OPERATOR CAB

Ref.N°	Part N°	Description	Remarks	Serial N°	Qty.
1	6589675	SCREW			4
2	6610082	SPRING			2
3	6664085	BUSHING			2
4	6677834	BLADE			1
5	6677836	MOTOR			1
6	6677837	BOLT			1
7	6677839	GASKET			1
8	6677840	SWIVEL ASSY			1
9	6677841	WASHER			1
10	6677842	NUT			1
11	6677843	NUT			1
12	6677844	NUT			2
13	6677845	ADAPTER			1
14	6677847	GROMMET			1
15	6678198	BOLT			1
16	6678739	WASHER			2
17	6679476	MOTOR			1
18	6680180	ARM			1
19	6680971	RETAINER			1
20	6681651	RING			2
21	6681652	CAP			2
22	6730849	SEAL			2
23	6801059	WASHER			1
24	6803202	SCREW			1
25	6812413	PIN			2
26	6812416	WINDOW			1
27	6813028	ROLLER			4
28	6814423	BRACKET			2
29	6816437	BRACKET			1
30	NAP	SEAL	use 33" of Ref. OPERATOR CAB(36)		1
31	7101204	WINDOW	front		1
32	21CM-616	BOLT			2
33	30H-10	CLAMP			1
34	43DM-6	NUT			2
35	51DM-6	NUT			2
36	6682492	EDGE TRIM			2
37	6808882	ADHESIVE			1
38	6808881	DEGREASER			1
39	6818073	CLEANER			1
40	6818074	PRIMER	black		1

OPERATOR CAB
(Door)

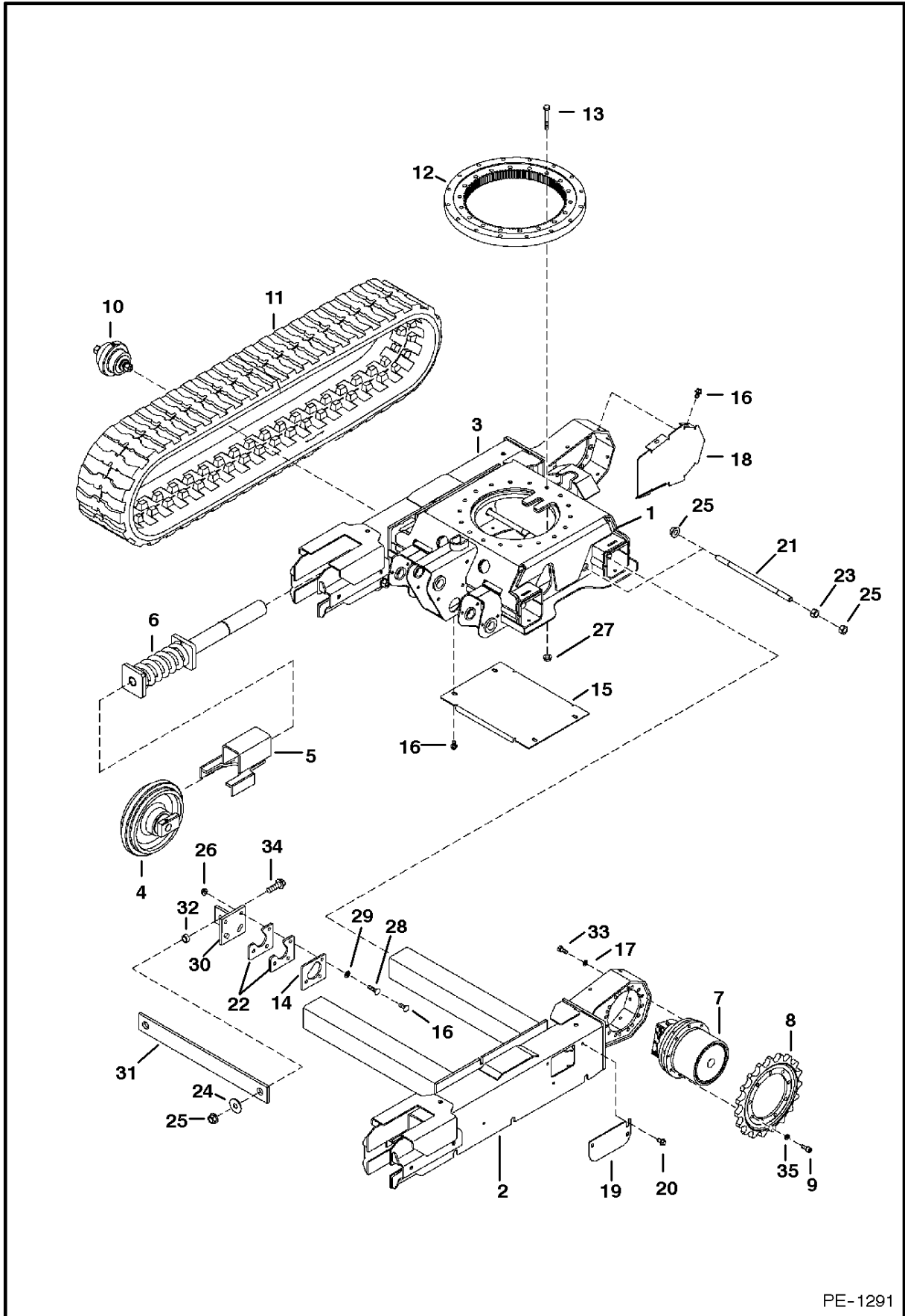


PE-1905

OPERATOR CAB

Ref.N°	Part N°	Description	Remarks	Serial N°	Qty.
1	6675386	SOCKET			1
2	6679885	HANDLE	door		1
3	6679886	LATCH			1
4	6803202	SCREW			4
5	6813493	DOOR			1
6	6813574	COVER	latch		1
7	6816248	DOOR	glass		1
8	6817305	SEAL	door		1
9	25G-510	BOLT	socket		1

UNDERCARRIAGE

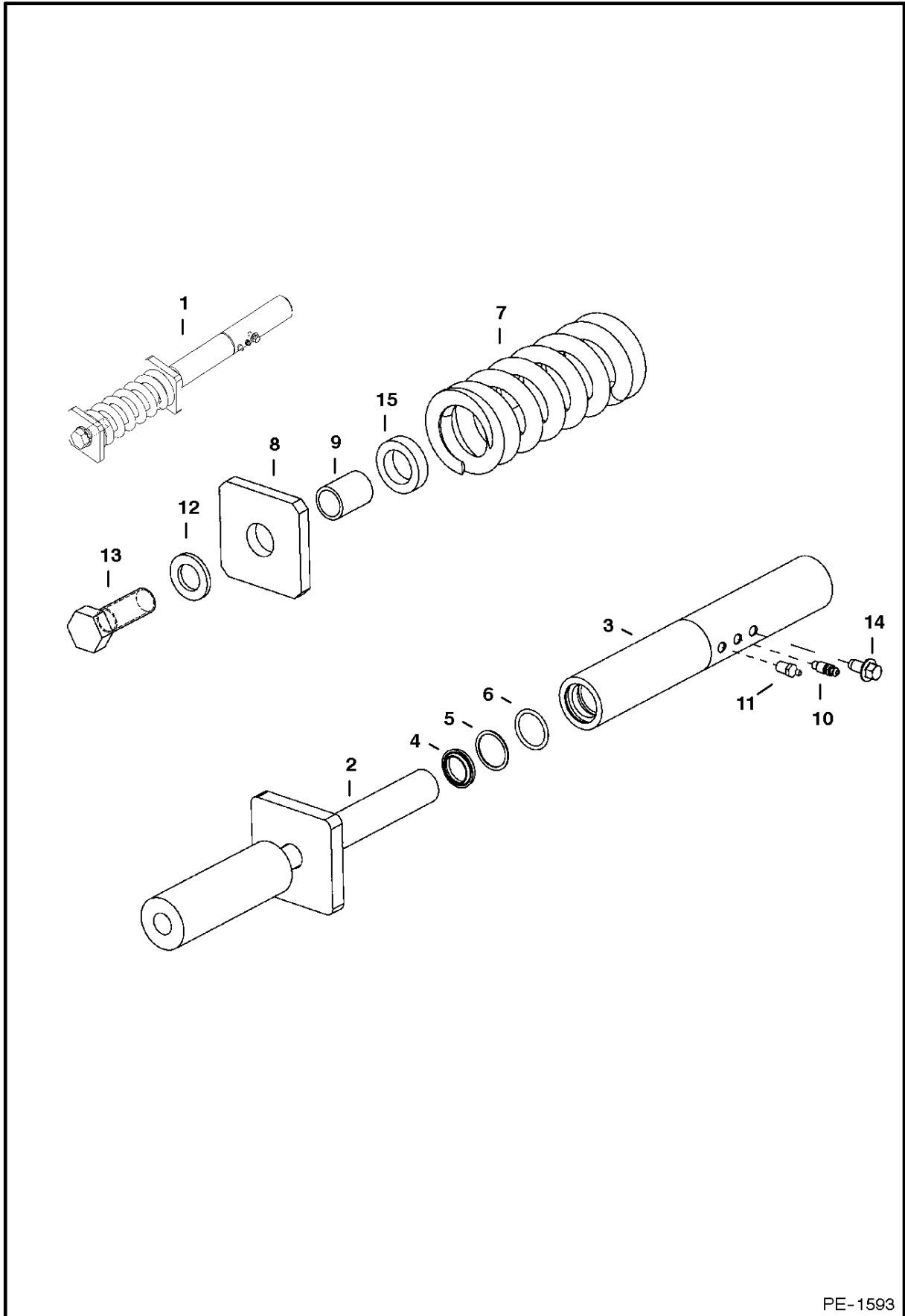


PE-1291

UNDERCARRIAGE

Ref.N°	Part N°	Description	Remarks	Serial N°	Qty.
1	6804995	FRAME			1
2	6804993	FRAME	L.H.		1
3	6804994	FRAME	R.H.		1
4		IDLER	See Page FRONT IDLER(1)		2
5	6805720	YOKE			2
6	6816237	SPRING ASSY.	Recoil - See Page RECOIL SPRING(1) - Was 6802565 [A]		2
7	6667336	MOTOR	Drive - See Page TRAVEL MOTOR(9)		2
8	6801584	SPROCKET			2
9	6805750	SCREW	Was 3GM-1025 [A]		18
10	6805219	ROLLER	track - See Page TRACK ROLLER(3)		6
11		TRACK	rubber - See page TRACKS (2)		2
12	6674671	SWING BEARING			1
12	6652969	SEAL			1
13	7CM-1280	BOLT			22
14	6805377	MOUNT	used on 322 only		2
15	6805051	COVER			1
16	28CM-1030	BOLT			16
17	6EM-100	WASHER			16
18	6802562	COVER			2
19	6596723	COVER			2
20	26GM-10020	SCREW			12
21	6805050	ROD	used on 322 only		2
22	6805378	MOUNT	used on 322 only		4
23	1DM-16	NUT	used on 322 only		6
24	17EM-160	WASHER	used on 322 only		4
25	51DM-16	NUT			4
26	51DM-10	NUT			6
27	51DM-12	NUT			18
28	28CM-1040	BOLT	used on 322 only		6
29	6674264	RETAINER			6
30	6805956	MOUNT			2
31	6805959	LINK			1
32	6805960	BUSHING			2
33	53CM-1025	SCREW	Was 1CM-1025 [A]		16
34	29CM-1650	BOLT			2
35	6808312	WASHER			16

RECOIL SPRING

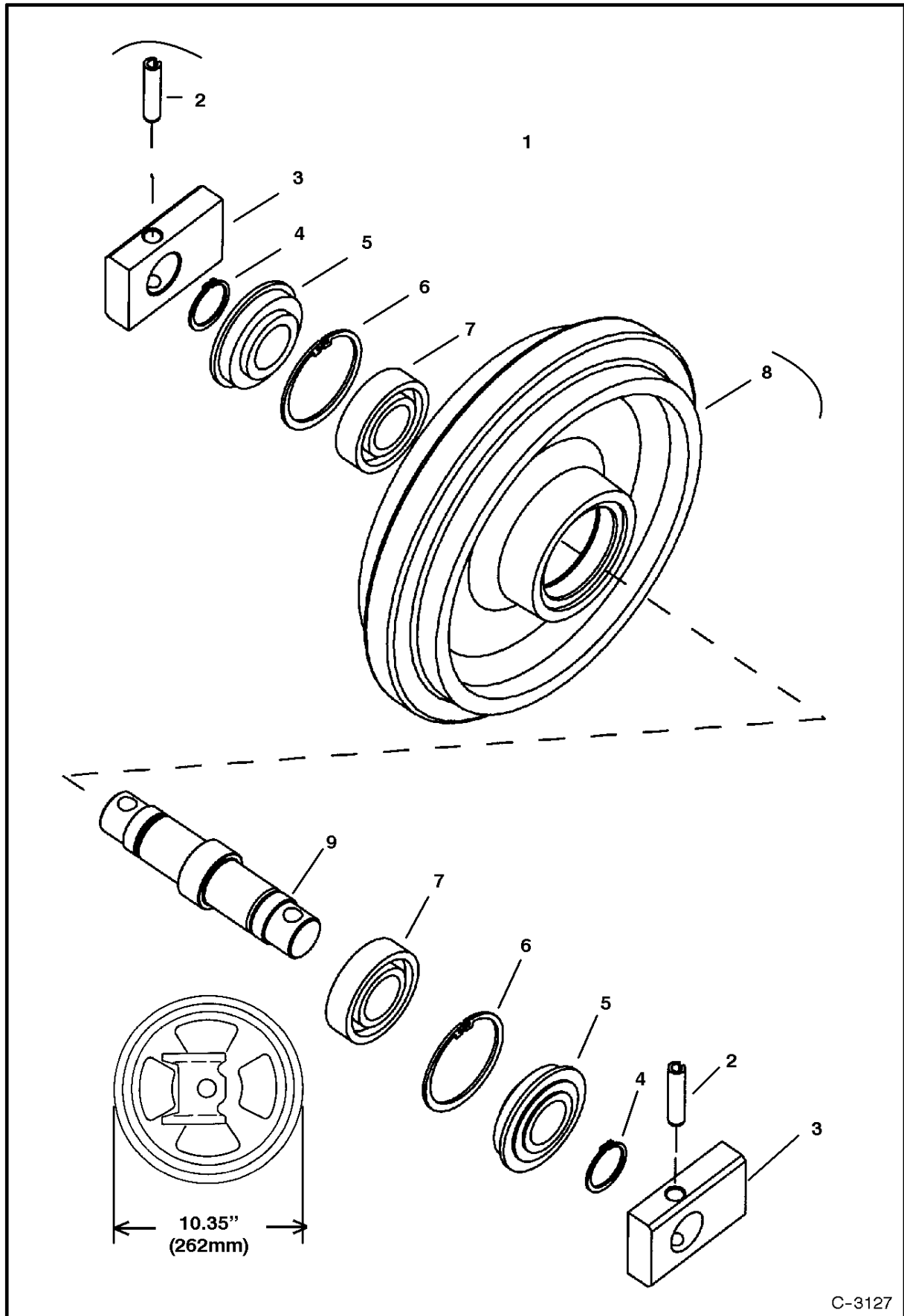


PE-1593

RECOIL SPRING

Ref.N°	Part N°	Description	Remarks	Serial N°	Qty.
1	6816237	SPRING ASSY.	Ref. RECOIL SPRING(2) - RECOIL SPRING(15) - Was 6802565 [A]		2
2	6589532	SHAFT			1
3	6816238	CYLINDER	Was 6802564 [A]=com30- }H~10{M		x
4	6665208	SEAL			1
5	73K-218	WASHER			1
6	58K-218	O-RING			1
7	6533648	SPRING			1
8	6589537	PLATE			1
9	6589536	SPACER			1
10	6645812	BLEEDER			1
11	6655752	GREASE ZERK			1
12	1EM-240	WASHER			1
13	1CM-2470	BOLT			1
14	26GM-10020	SCREW			1
15	6805661	SPACER			1

FRONT IDLER



C-3127

FRONT IDLER

Ref.N°	Part N°	Description	Remarks	Serial N°	Qty.
1	NAP	IDLER	Assy. - Ref. FRONT IDLER(2)-FRONT IDLER(9) - Order 6807906		2
2	2JM-1045	PIN			2
3	6589010	BLOCK			2
4	5JM-30	SNAP RING			2
5	6652379	SEAL			2
6	7JM-62	SNAP RING			2
7	NAP	BEARING	Order 6680290 - Was 853189 [A]		2
8	NAP	IDLER	Order 6807906 Was 6801581 [A]		1
9	NAP	SHAFT	Order 6807906 Was 6589013 [A]		1

**Thank you very much
for your reading.**

**Please click here and go
back to our website.**

**Then, you can download
the complete manual
instantly.**

No waiting.

Have questions.

Please write to me.

**All the problems will be answered
within 12 hours.**

aservicemanuapdf@yahoo.com