

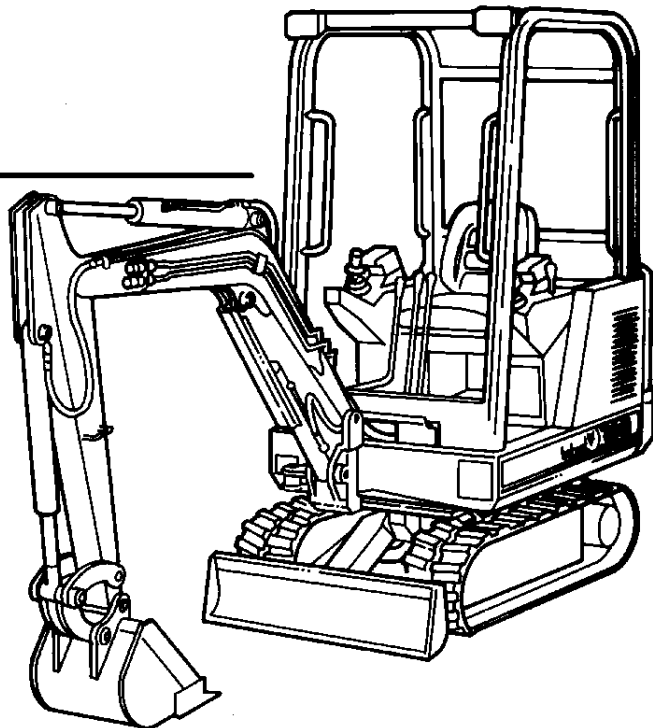
320



Bobcat®

Parts Manual

S/N 511720001 & Above



6722863 (12-00) Revised (11-01)

Printed in U.S.A.

© Bobcat Company 2001

Our customer service email: aservicemanualpdf@yahoo.com

320 ALPHABETICAL INDEX

ACCUMULATOR	166	INJECTOR NOZZLES	262, 264
AIR CLEANER	236, 269	JOYSTICK . 94, 96, 100, 104, 108, 150, 154	
ALTERNATOR	228, 234	KEY	14, 16, 18, 224
ANTI-FREEZE	322	KIT, BELLY PAN	274
ARM	60	KIT, WORK LIGHT	320
ARM, WIPER	28	LAMP, WARNING	224
ARM	62	LATCH	24, 28, 36, 40
BEARING, ENGINE	250	LEVER, FUEL CONTROL	254, 256
BEARING, SWING	48	LEVER, TRAVEL	86
BELLY PAN KIT	274	LIGHT	26
BELT, ALTERNATOR & FAN	234	LIGHT, FLOOD	20
BLADE	72	LIGHT, SWITCH	224
BLADE LEVER	92	MANIFOLD	102
BLADE, WIPER	28	MANIFOLD, INTAKE & EXHAUST	259
BLOCK, DRAIN . 94, 96, 100, 104, 108, 112		MOTOR, HEATER	44
BOOM	66	MOTOR, SWING	134
BREAKER	300	MOTOR, TRAVEL	142, 158
BUCKETS	280	MOTOR, WIPER	28
CAB DOOR	40	MOUNT, BREAKER	302
CAB HARNESS	28	MUFFLER	234
CAB, ROPS	20	OIL COOLER	110
CAB	24	OIL FILTER, ENGINE	246
CABLE, BATTERY	224	OIL PAN	244
CABLE, SPEED CONTROL	236	OIL PUMP, ENGINE	248
CAMSHAFT	252	OIL	322
CAMSHAFT, FUEL	253	OPERATORS HANDBOOK KIT	308
CONSOLE, CONTROL	82, 84	PISTON, ENGINE	250
COUPLER, AUXILIARY	126	PUMP	236
COUPLER, DIAGNOSTIC	110	PUMP, HYDRAULIC	206
COVER, ENGINE	12	QUICK COUPLER	122, 126
CRANKSHAFT	250	RADIATOR	234
CYLINDER	128, 136	RECOIL SPRING	48, 52
CYLINDER HEAD	243	RESERVOIR, HYDRAULIC	144
CYLINDER, BOOM	214	ROLLER, TRACK	58
CYLINDER, ARM	60, 126, 208	SENSOR, FUEL LEVEL	272
CYLINDER, BLADE	134, 212	SIGHT GAUGE	144
CYLINDER, BOOM	126	SPRING, RECOIL	48, 52
CYLINDER, BOOM SWING ... 68, 218, 222		SWING BEARING	48
CYLINDER, BOOM	66	SWING MOTOR	134, 136
CYLINDER, GAS SPRING .. , 12, 30, 82, 84		SWING POST	66 68, 70
DAMPENER, VIBRATION	20	SWITCH, FAN	44, 46
DECALS	290, 293, 294, 295	SWITCH, IGNITION	224
DIPSTICK, ENGINE	244	SWITCH, JOYSTICK	150
DOMELIGHT	24	SWITCH, LIGHT	224
DOOR, CAB	40	SWITCH, MAGNETIC	224
DRIVE MOTOR	48	SWITCH, MICRO	224
ENGINE	236, 237	SWITCH, OIL PRESSURE	248
FAN, GUARD	234	SWITCH, WATER TEMP.	224
FILTER, ENGINE OIL	246	SWITCH, WIPER/WASHER	24
FILTER, FUEL	272	SWIVEL JOINT	134, 142, 148
FILTER, HYD. OIL	112	TANK HEATER	317, 318
FLYWHEEL	236	TANK, FUEL	272
FRAME, UPPERSTRUCTURE	12	TANK, HYDRAULIC	144
FRONT IDLER	56	THERMOSTAT	258
FRONT WINDOW	28	TOOTH, BUCKET	280
FUEL PUMP	260	TRACK	48
FUEL, GAUGE	224	TRACK ROLLER	48, 58
FUSE	224	U-JOINT	236
FUSE HOLDER	24	VALVE	198
GASKET KIT, ENGINE	266, 268	VALVE GUIDES	243
GAUGE, FUEL	224	VALVE, 3 SPOOL	170
GEAR PUMP	110, 206	VALVE, 6 SPOOL	176
HARNESS, CONSOLE	224	VALVES, INTAKE & EXHAUST	242
HARNESS, ENGINE	224	WATER PUMP	257
HEAD GASKET	243	WINDOW, FRONT	28
HEATER	20, 20, 44, 46	WIPER MOTOR	28
HEATER HOSES	20	WIPER/WASHER SWITCH	24
INJECTION PUMP	260	WORK LIGHT KIT	320

320 CONTENTS

MAIN FRAME	12-47
UPPERSTRUCTURE & ENGINE COVERS	12-15
UPPERSTRUCTURE & COUNTERWEIGHTS	16-17
OPERATOR CANOPY	18-19
CAB & MOUNTING	20-23
OPERATOR CAB	24-37
WINDOW ASSY	38-39
OPERATOR CAB (DOOR)	40-43
HEATER	44-47
UNDERCARRIAGE	48-63
UNDERCARRIAGE	48-51
RECOIL SPRING	52-55
FRONT IDLER	56-57
TRACK ROLLER	58-59
ARM	60-63
WORK EQUIPMENT	64-73
BOOM	64-67
SWING POST	68-71
BLADE	72-73
CONTROLS	74-93
CONTROL CONSOLE	74-85
TRAVEL/STEERING LEVERS	86-87
BOOM SWING & AUXILIARY PEDAL	88-91
BLADE CONTROLS	92-93
HYDRAULIC SYSTEM	94-235
HYDRAULIC CIRCUITRY	94-145
SWIVEL JOINT	146-149
R.H. JOYSTICK CONTROLS	150-153
L.H. JOYSTICK CONTROLS	154-157
TRAVEL MOTOR	158-165
JOYSTICK MANIFOLD	166-167
ACCUMULATOR VALVE	168-169
CONTROL VALVE ASSEMBLY (3 SPOOL)	170-171
OUTLET VALVE SECTION	172-173
VALVE SECTION (BLADE)	174-175
INLET VALVE SECTION (SWING MOTOR)	176-177
CHECK VALVE	178-179
CONTROL VALVE ASSEMBLY (6-SPOOL)	180-181
INLET VALVE SECTION (L.H. TRAVEL)	182-183
VALVE SECTION (ARM, BOOM & BUCKET)	184-185
VALVE SECTION (AUXILIARY)	186-187
INLET VALVE SECTION (R.H. TRAVEL)	188-189
CONTROL VALVE ASSY (3 SPOOL)	190-193
VALVE SECTION (BLADE & BOOM SWING)	194-195
VALVE SECTION (SWING MOTOR)	196-197
RELIEF VALVE (3 & 6 SPOOL)	198-199
CONTROL VALVE ASSY (6 SPOOL)	200-201
VALVE SECTION (R.H. TRAVEL & L.H. TRAVEL)	202-203
VALVE SECTION (AUXILIARY)	204-205
VALVE SECTION (BOOM, BUCKET & ARM)	206-207
RELIEF VALVE (6-SPOOL)	208-209
SWING MOTOR	210-213
BRAKE VALVE	214-215
COUNTER BALANCE VALVE	216-217
GEAR PUMP	218-219
ARM CYLINDER	220-223
BLADE CYLINDER	224-225
BOOM CYLINDER	226-229
BUCKET CYLINDER	230-233
SWING CYLINDER	234-235
ELECTRICAL SYSTEMS	236-245
ELECTRICAL SYSTEM	236-239
ALTERNATOR	240-241
STARTER	242-243
STARTER (SEALED)	244-245

320 CONTENTS (Cont'd)

POWER UNIT	246-299
RADIATOR, AIR CLEANER & MUFFLER MOUNTING	246-247
ENGINE, AIR CLEANER AND FLYWHEEL MOUNTING	248-249
ENGINE	250-251
ROCKER ARM COVER	252-253
ROCKER ARM & VALVES	254-255
CYLINDER HEAD	256-257
OIL PAN	258-259
GEARCASE	260-261
CRANKCASE	262-263
PISTON & CRANKSHAFT	264-265
MAIN BEARING CASE	266-267
CAMSHAFT	268-269
FUEL CAMSHAFT	270-271
STOP LEVER	272-273
GOVERNOR GROUP	274-275
SPEED CONTROL PLATE	276-277
WATER PUMP	278-279
WATER FLANGE & THERMOSTAT	280-281
MANIFOLDS	282-283
FUEL & INJECTION PUMP	284-285
INJECTION PUMP	286-287
INJECTOR NOZZLES	288-289
NOZZLE HOLDER	290-291
LOWER GASKET KIT	292-293
UPPER GASKET KIT	294-295
ENGINE AIR CLEANER	296-297
FUEL SYSTEM	298-299
ACCESSORIES	300-362
BELLY PAN KIT	303-304
BREAKER MOUNTING KIT	305-308
BUCKET	309-312
BUCKET TEETH	313-314
CAB DOOR KIT	315-316
CAB ENCLOSURE	317-318
CAB OR CANOPY (FOPS KIT)	319-320
CHARGE KIT	321-322
DECALS	323-332
FRONT WINDOW KIT	333-334
HYDRAULIC BREAKER	335-340
HYDRAULIC BREAKER TOOLS	341-342
ISO TO STANDARD CONTROLS	343-344
OPERATOR HAND BOOK KIT	345-346
RAINGUARD KIT	347-348
RIGHT HAND ENTRY KIT	349-350
SPECIAL APPLICATION KIT	351-354
TANK HEATER KIT	355-358
WORK LIGHT KIT	359-360
BULK ITEMS	361-362
NUMERICAL INDEX	363-408
NUMERICAL INDEX	363-408

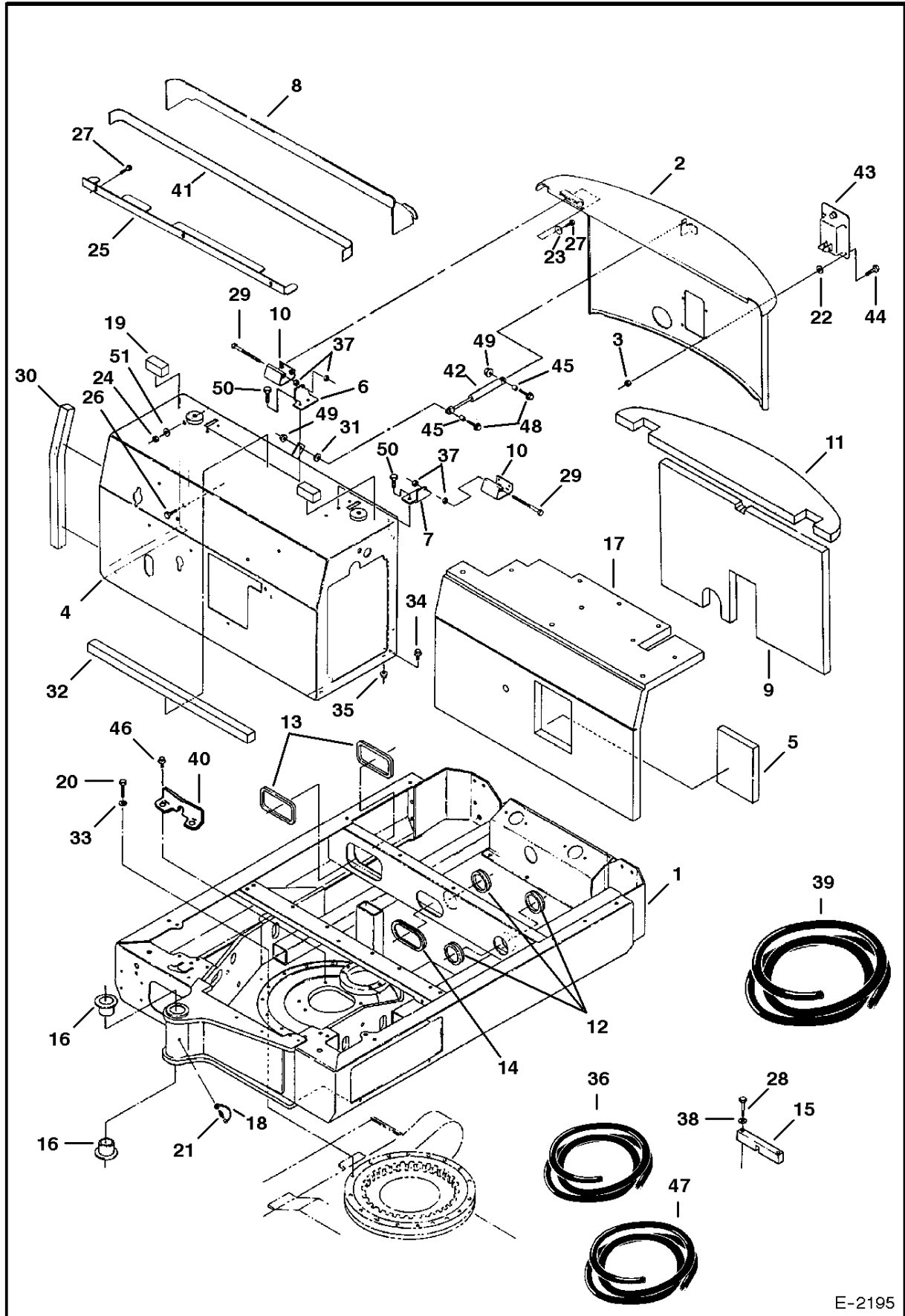
320 CONTENTS

MAIN FRAME	12-47
UPPERSTRUCTURE & ENGINE COVERS	12-15
UPPERSTRUCTURE & COUNTERWEIGHTS	16-17
OPERATOR CANOPY	18-19
CAB & MOUNTING	20-23
OPERATOR CAB	24-37
WINDOW ASSY	38-39
OPERATOR CAB (DOOR)	40-43
HEATER	44-47
UNDERCARRIAGE	48-63
UNDERCARRIAGE	48-51
RECOIL SPRING	52-55
FRONT IDLER	56-57
TRACK ROLLER	58-59
ARM	60-63
WORK EQUIPMENT	64-73
BOOM	64-67
SWING POST	68-71
BLADE	72-73
CONTROLS	74-93
CONTROL CONSOLE	74-85
TRAVEL/STEERING LEVERS	86-87
BOOM SWING & AUXILIARY PEDAL	88-91
BLADE CONTROLS	92-93
HYDRAULIC SYSTEM	94-235
HYDRAULIC CIRCUITRY	94-145
SWIVEL JOINT	146-149
R.H. JOYSTICK CONTROLS	150-153
L.H. JOYSTICK CONTROLS	154-157
TRAVEL MOTOR	158-165
JOYSTICK MANIFOLD	166-167
ACCUMULATOR VALVE	168-169
CONTROL VALVE ASSEMBLY (3 SPOOL)	170-171
OUTLET VALVE SECTION	172-173
VALVE SECTION (BLADE)	174-175
INLET VALVE SECTION (SWING MOTOR)	176-177
CHECK VALVE	178-179
CONTROL VALVE ASSEMBLY (6-SPOOL)	180-181
INLET VALVE SECTION (L.H. TRAVEL)	182-183
VALVE SECTION (ARM, BOOM & BUCKET)	184-185
VALVE SECTION (AUXILIARY)	186-187
INLET VALVE SECTION (R.H. TRAVEL)	188-189
CONTROL VALVE ASSY (3 SPOOL)	190-193
VALVE SECTION (BLADE & BOOM SWING)	194-195
VALVE SECTION (SWING MOTOR)	196-197
RELIEF VALVE (3 & 6 SPOOL)	198-199
CONTROL VALVE ASSY (6 SPOOL)	200-201
VALVE SECTION (R.H. TRAVEL & L.H. TRAVEL)	202-203
VALVE SECTION (AUXILIARY)	204-205
VALVE SECTION (BOOM, BUCKET & ARM)	206-207
RELIEF VALVE (6-SPOOL)	208-209
SWING MOTOR	210-213
BRAKE VALVE	214-215
COUNTER BALANCE VALVE	216-217
GEAR PUMP	218-219
ARM CYLINDER	220-223
BLADE CYLINDER	224-225
BOOM CYLINDER	226-229
BUCKET CYLINDER	230-233
SWING CYLINDER	234-235
ELECTRICAL SYSTEMS	236-245
ELECTRICAL SYSTEM	236-239
ALTERNATOR	240-241
STARTER	242-243
STARTER (SEALED)	244-245

320 CONTENTS (Cont'd)

POWER UNIT	246-299
RADIATOR, AIR CLEANER & MUFFLER MOUNTING	246-247
ENGINE, AIR CLEANER AND FLYWHEEL MOUNTING	248-249
ENGINE	250-251
ROCKER ARM COVER	252-253
ROCKER ARM & VALVES	254-255
CYLINDER HEAD	256-257
OIL PAN	258-259
GEARCASE	260-261
CRANKCASE	262-263
PISTON & CRANKSHAFT	264-265
MAIN BEARING CASE	266-267
CAMSHAFT	268-269
FUEL CAMSHAFT	270-271
STOP LEVER	272-273
GOVERNOR GROUP	274-275
SPEED CONTROL PLATE	276-277
WATER PUMP	278-279
WATER FLANGE & THERMOSTAT	280-281
MANIFOLDS	282-283
FUEL & INJECTION PUMP	284-285
INJECTION PUMP	286-287
INJECTOR NOZZLES	288-289
NOZZLE HOLDER	290-291
LOWER GASKET KIT	292-293
UPPER GASKET KIT	294-295
ENGINE AIR CLEANER	296-297
FUEL SYSTEM	298-299
ACCESSORIES	300-362
BELLY PAN KIT	303-304
BREAKER MOUNTING KIT	305-308
BUCKET	309-312
BUCKET TEETH	313-314
CAB DOOR KIT	315-316
CAB ENCLOSURE	317-318
CAB OR CANOPY (FOPS KIT)	319-320
CHARGE KIT	321-322
DECALS	323-332
FRONT WINDOW KIT	333-334
HYDRAULIC BREAKER	335-340
HYDRAULIC BREAKER TOOLS	341-342
ISO TO STANDARD CONTROLS	343-344
OPERATOR HAND BOOK KIT	345-346
RAINGUARD KIT	347-348
RIGHT HAND ENTRY KIT	349-350
SPECIAL APPLICATION KIT	351-354
TANK HEATER KIT	355-358
WORK LIGHT KIT	359-360
BULK ITEMS	361-362
NUMERICAL INDEX	363-408
NUMERICAL INDEX	363-408

UPPERSTRUCTURE & ENGINE COVERS



E-2195

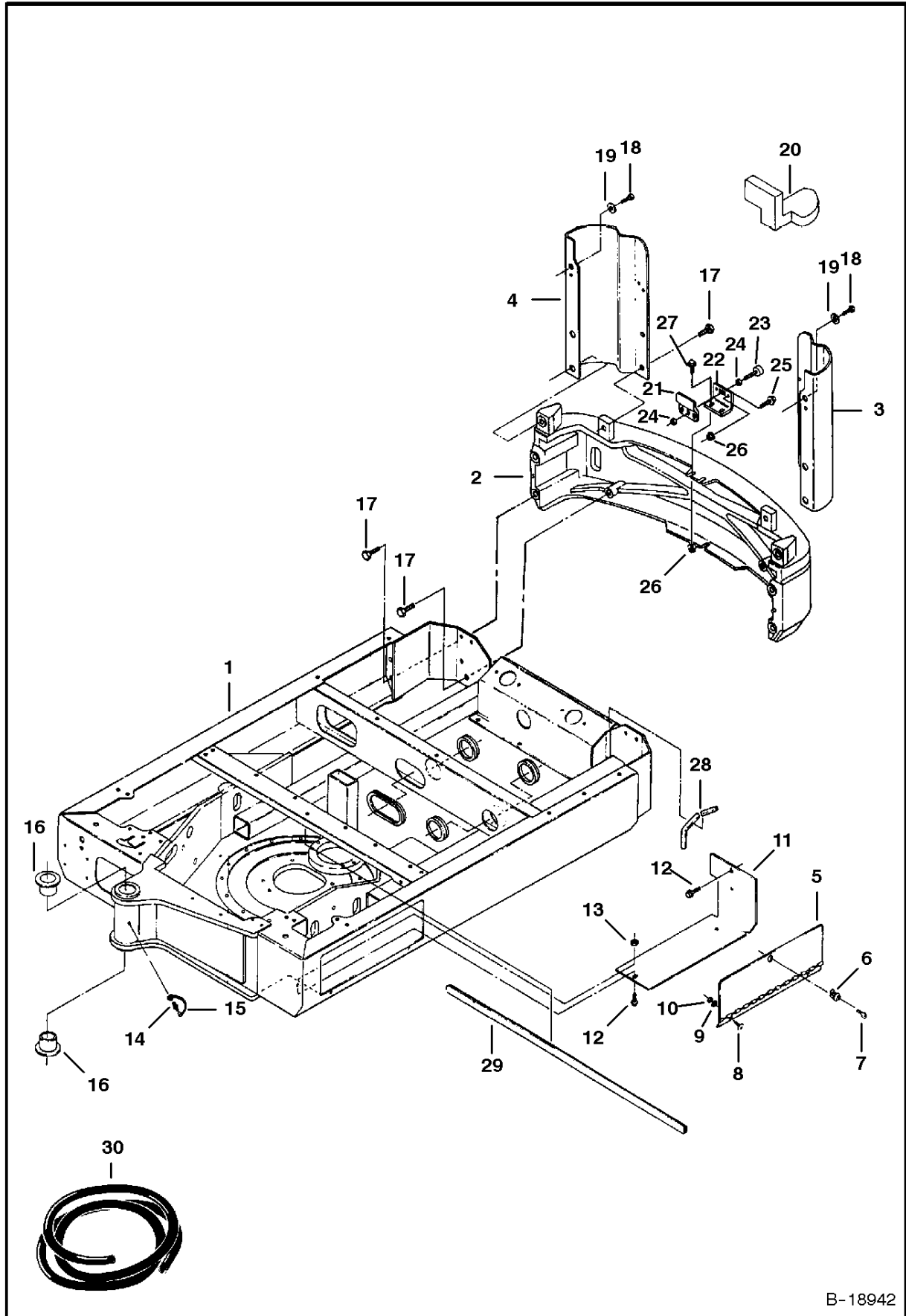
UPPERSTRUCTURE & ENGINE COVERS

Ref.N°	Part N°	Description	Remarks	Serial N°	Qty.
1	6587936	FRAME	Upperstructure	20001 - 21411	1
1	6589989	FRAME	Upperstructure	21412 & Above	1
2	6587891	COVER	Engine rear		1
3	49DM-10	NUT			4
4	6589936	COVER	Engine Front - Was 6589029 [A]		1
5	6588339	INSULATION			1
6	6589033	ANGLE	R.H.		1
7	6589032	ANGLE(L.H.081<com38-}H~10{M	L.H.		1
8	6588070	COVER(0818com3KB}H~10{M			1
9	6588340	INSULATION			1
10	6588133	HINGE			2
11	6588341	INSULATION(081>com3H>}H~10{M			1
12	6533975	GROMMET			3
13	NAP	MOULDING	18'(457mm) long - Order Ref. UPPERSTRUCTURE & ENGINE COVERS(36)		2
14	NAP	MOULDING	12'(305mm) long - Order Ref. UPPERSTRUCTURE & ENGINE COVERS(36)		1
15	6538801	STOP	Swivel Joint - used W/Swivel Joint 6658956	20001-20661	1
16	6539897	BUSHING			2
17	6588342	INSULATION			1
18	6652943	COVER, GREASE	Grease Fitting		1
19	NAP	SEAL	3" (76mm) long-Order Ref.UPPERSTRUCTURE & ENGINE COVERS(39)		1
20	10CM-1045	SCREW			16
21	10H-25	GREASE ZERK			1
22	15EM-60	WASHER			4
23	17EM-80	WASHER			4
24	39DM-12	NUT			2
25	6588648	SUPPORT(081;com3;}H~10{M			1
26	1CM-1630	BOLT			2
27	26GM-8016	SCREW	Was 1CM-820 [B]		7
28	1CM-845	BOLT			2
29	1CM-890	BOLT			2
30	NAP	SEAL	20" (508mm)long-Order Ref. UPPERSTRUCTURE & ENGINE COVERS(39)		2
31	1EM-80	WASHER	Not used on later models		1
32	NAP	SEAL	28" (711mm) long-Order Ref. UPPERSTRUCTURE & ENGINE COVERS(39)		2
33	27E-6	WASHER			16
34	29CM-1020	BOLT			4
35	42DM-10	NUT			4
36	6620417	MOULDING(Bulk - Sold Per Foot08x}com3E9}H~10{M	Bulk - Sold Per Foot		x
37	1DM-8	NUT			4
38	6EM-80	WASHER			2
39	6554274	INSULATION	Bulk - Sold Per Foot		x
40	6588243	BRACKET(Swivel Joint081Gcom3F;}H~10{M	Swivel Joint-used W/Swivel Joint 6664409	20662 & Above	1
41	NAP	TAPE	Double Backed-for attaching Ref. UPPERSTRUCTURE & ENGINE COVERS(8) to the cab/canopy- 48"(1220mm)long-Order Ref. UPPERSTRUCT		1
42	6662989	CYLINDER(Gas Spring081Fpro1Page	Gas Spring		1
43	6663972	LATCH			1

UPPERSTRUCTURE & ENGINE COVERS

Ref.N°	Part N°	Description	Remarks	Serial N°	Qty.
43	6587458	KEY SET	Incl. W/Ref. UPPERSTRUCTURE & ENGINE COVERS (43)		1
44	6587499	SCREW	Used on Early Models		4
44	6589675	SCREW	Used on Later Models		4
45	6588293	BUSHING			2
46	29CM-820	BOLT			4
47	6900669	TAPE	Bulk - Sold Per Foot - Was 6665212 [A]		x
48	29CM-830	SCREW			2
49	42DM-8	NUT			2
50	26GM-10020	SCREW			4
51	1EM-120	WASHER(082:com3 pO)H~10{M			2

UPPERSTRUCTURE & COUNTERWEIGHTS

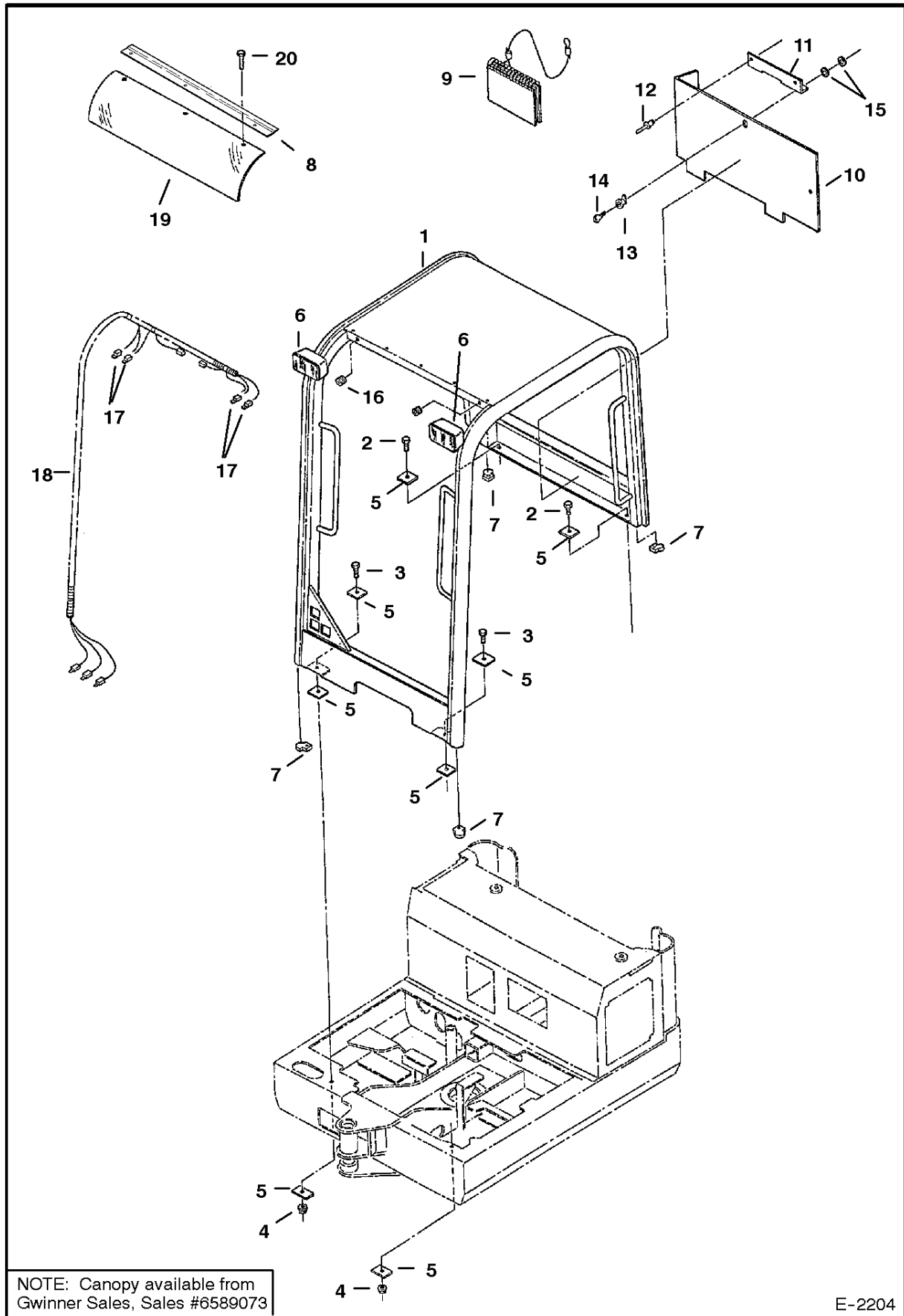


B-18942

UPPERSTRUCTURE & COUNTERWEIGHTS

Ref.N°	Part N°	Description	Remarks	Serial N°	Qty.
1	6587936	FRAME	Upperstructure	20001 - 21411	1
1	6589989	FRAME	Upperstructure	21412 - Above	1
2	6587934	COUNTERWEIGHT			1
3	6587895	BUMPER	L.H.		1
4	6588131	BUMPER	R.H.		1
5	6588154	COVER	Tool Box		1
6	6661695	LOCK ASSY.			1
7	6587458	KEY SET			1
8	21CM-820	BOLT			2
9	1EM-80	WASHER	Not used on later models		2
10	49DM-8	NUT			2
11	6587969	ANGLE	Tool Box Bottom		1
12	29CM-1020	BOLT			2
13	49DM-10	NUT			1
14	10H-25	GREASE ZERK			1
15	6652943	COVER, GREASE	Grease Fitting		1
16	6539897	BUSHING			2
17	1CM-1630	BOLT			8
18	1CM-1230	BOLT	Was 1CM-1220 [B]		2
19	1EM-120	WASHER(082:com3 pO}H~10{M			2
20	6588897	INSULATION			1
21	6588252	BRACKET			1
22	6588251	ANGLE			1
23	6655399	BUMPER			1
24	61D-5	NUT			2
25	29CM-820	BOLT			2
26	42DM-8	NUT			4
27	29CM-825	SCREW			2
28	NAP	MOULDING	8" (203mm) long - Order Ref. UPPERSTRUCTURE & COUNTERWEIGHTS(30)		1
29	NAP	MOULDING	23" (584mm) long - Order Ref. UPPERSTRUCTURE & COUNTERWEIGHTS(30)		1
30	6620417	MOULDING(Bulk - Sold Per Foot08x}co m3E9}H~10{M	Bulk - Sold Per Foot		x

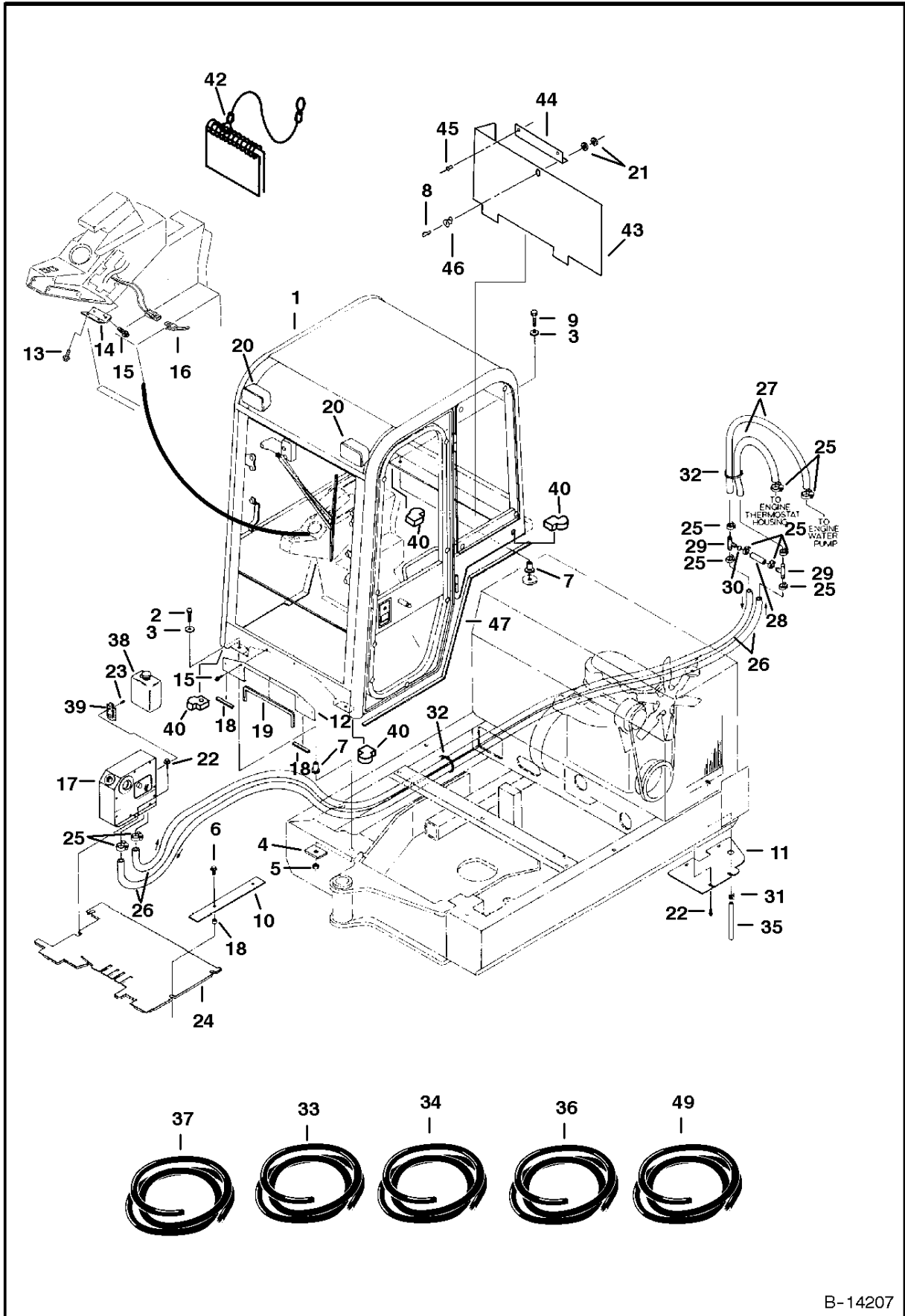
OPERATOR CANOPY



OPERATOR CANOPY

Ref.N°	Part N°	Description	Remarks	Serial N°	Qty.
1	NAP	CANOPY	Order 6800748 - Was SALES [A]		1
1	6800748	CANOPY	weldment only		1
2	7CM-1225	BOLT			2
3	7CM-1240	SCREW			2
4	43DM-12	NUT			2
5	6588177	PLATE			8
6	NAP	LIGHT	Order 6668722 - Was 6664106[A]		2
6	6665700	SEALED BEAM	For light 6664106		2
6	6664106	LIGHT	Was 6668722[A]		2
6	6668721	BULB	Replacement Bulb for 6668722		2
7	6807987	INSULATION	Was 6589660[A]		3
8	6805291	BRACKET			1
9	6900465	HANDBOOK	Operators - English -		x
10	6589655	PANEL	Storage-Canopy Models	21263 & Above	1
10	6589656	PANEL	Storage-Cab Models	21263 & Above	1
11	6589657	ANGLE			1
12	6630207	RIVET			2
13	6661695	LOCK ASSY.			1
14	6587458	KEY SET			1
15	6536802	WASHER			2
16	6664562	GROMMET	Was 1021036 [A]		3
17	6519548	CONNECTOR	Electric		4
18	6628808	HARNESS	Canopy - Also Order Ref. OPERATOR CANOPY(17)		1
19	6806131	WINDOW	Was 6595792 [A]		1
20	6589675	SCREW			3
20	26GM-6016	BOLT	Use W/Ref. OPERATOR CANOPY(8)		3

CAB & MOUNTING



B-14207

320 Excavator Parts
S/N 20000 & Above

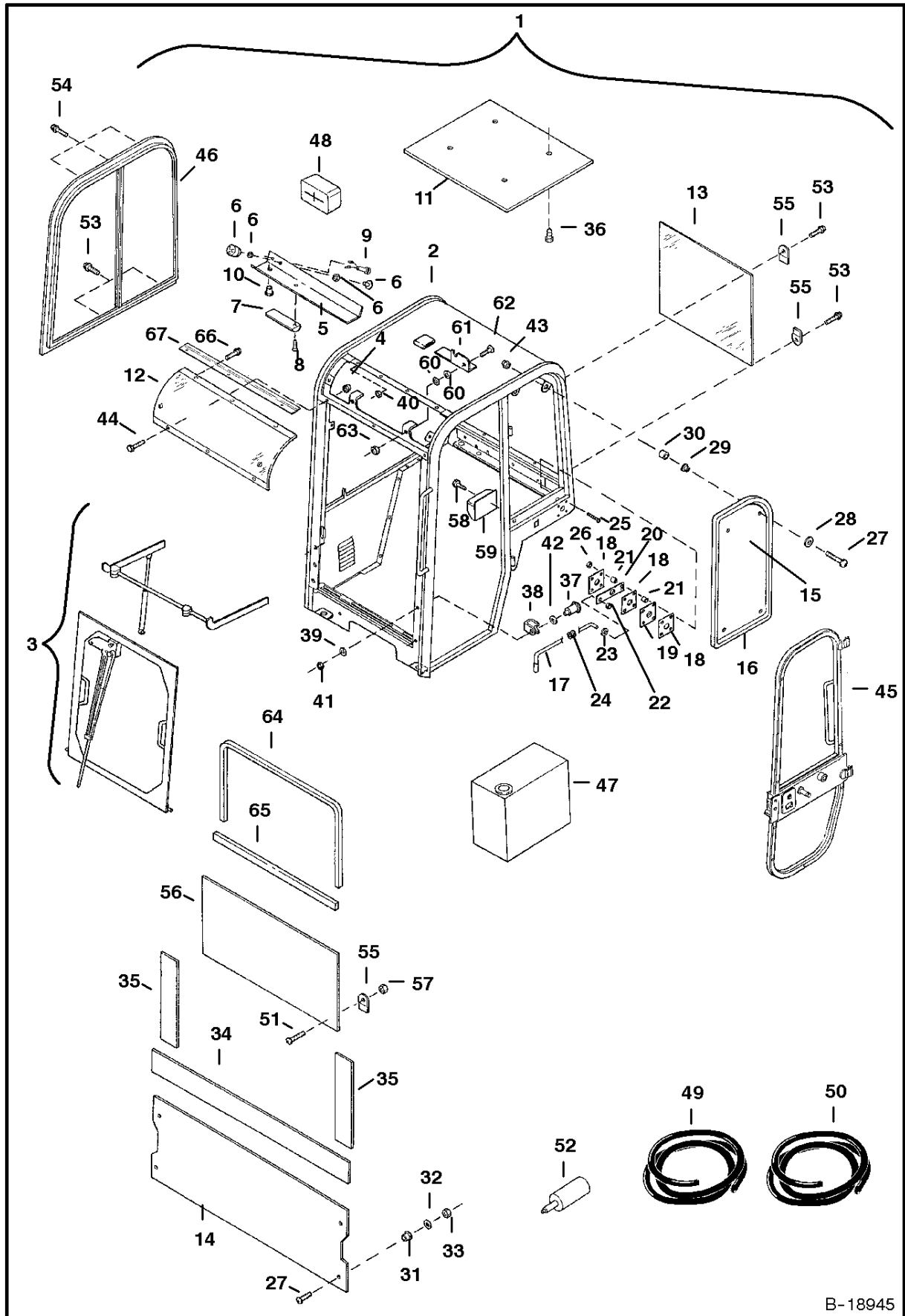
CAB & MOUNTING

Ref.N°	Part N°	Description	Remarks	Serial N°	Qty.
1	NAP	CAB ASSY.	See Page OPERATOR CANOPY(1)-OPERATOR CAB(6)- order 6801477 - Was SALES [A]		1
1	6801477	CAB	weldment only		1
2	1CM-1255	BOLT	Was 7CM-1255 [A]		2
3	6805244	WASHER			4
4	6588177	PLATE			6
5	39DM-12	NUT			2
6	26GM-10030	SCREW	Was 29CM-1030 [B]		2
7	6560633	MOUNT	Vibration		4
8	6587458	KEY SET			1
9	7CM-1250	SCREW			2
10	6588516	RETAINER	Floormat		1
11	6588652	PLATE	Air Baffle		1
12	6588650	PLATE	Cab Front		1
13	26GM-8016	SCREW			2
14	6587529	PLATE	Console Lockdown		1
15	6589675	SCREW			7
16	6587525	HARNES	W/Console locked down		1
17		HEATER	See Page HEATER(7) & HEATER(8)		1
18	6503451	SPACER			2
19	NAP	MOULDING	20' (508mm) long - order Ref. CAB & MOUNTING(37)		1
20	NAP	LIGHT	Order 6668722 Was 6664106 [A]		2
20	6665700	SEALED BEAM	For Light 6664106		2
20	6664106	LIGHT	Was 6668722[A]		2
20	6668721	BULB	Replacement Bulb For 6668722		2
21	6536802	WASHER			2
22	26GM-10020	SCREW	Was 29CM-1016 [A]		7
23	29CM-616	SCREW			2
24	6589891	FLOORMAT	Cab		1
24	6588249	FLOORMAT	Canopy		1
25	42H-8	CLAMP			10
26	NAP	HOSE	70" (1778mm) long - Order Ref. CAB & MOUNTING(33)		2
27	NAP	HOSE	18"(457mm) long - Order Ref. CAB & MOUNTING(34)		2
28	NAP	HOSE	3" (76mm) long - Order Ref. CAB & MOUNTING(33)		1
29	6648485	TEE	Was 6564697 [A]		2
30	6585223	ORIFICE			1
31	6515575	CLAMP			1
32	6610510	NYLON TIE			5
33	889269	HOSE	Bulk - Order Per Foot		x
34	6565977	HOSE	Bulk - Order Per Foot		x
35	NAP	HOSE	9' (229mm) long - Order Ref. CAB & MOUNTING(36)		1
36	6586251	HOSE	Bulk - Order Per Foot		x
37	6513152	SEAL	Bulk - Order Per Foot		x
38	6664438	WASHER	Assy. - W/Ref. CAB & MOUNTING(39)		1
38	6664554	PUMP			1
38	NAP	TANK	Order Ref. CAB & MOUNTING(38)		1
38	6664555	NOZZLE	Window Washer		1
38	6664556	HOSE			1
39	6664557	BRACKET			1
40	6807987	INSULATION			3
41	6900465	HANDBOOK	Operators - English - Was 6596919 [A]		1
42	6589656	PANEL	Storage - Cab Models	21263 & Above	1
42	6589655	PANEL	Storage-Canopy Models	21263 & Above	1
43	6589657	ANGLE			1
44	6680200	RIVET			2

CAB & MOUNTING

Ref.N°	Part N°	Description	Remarks	Serial N°	Qty.
45	6661695	LOCK ASSY.			1
46	NAP	SEAL	63" (1600mm) Long - Order Ref. CAB & MOUNTING(48)		1
47	NAP	SEAL	13" (330mm) Long - Order Ref. CAB & MOUNTING(48)		2
48	6801027	SEAL	Bulk - Sold Per Foot		x

OPERATOR CAB



B-18945

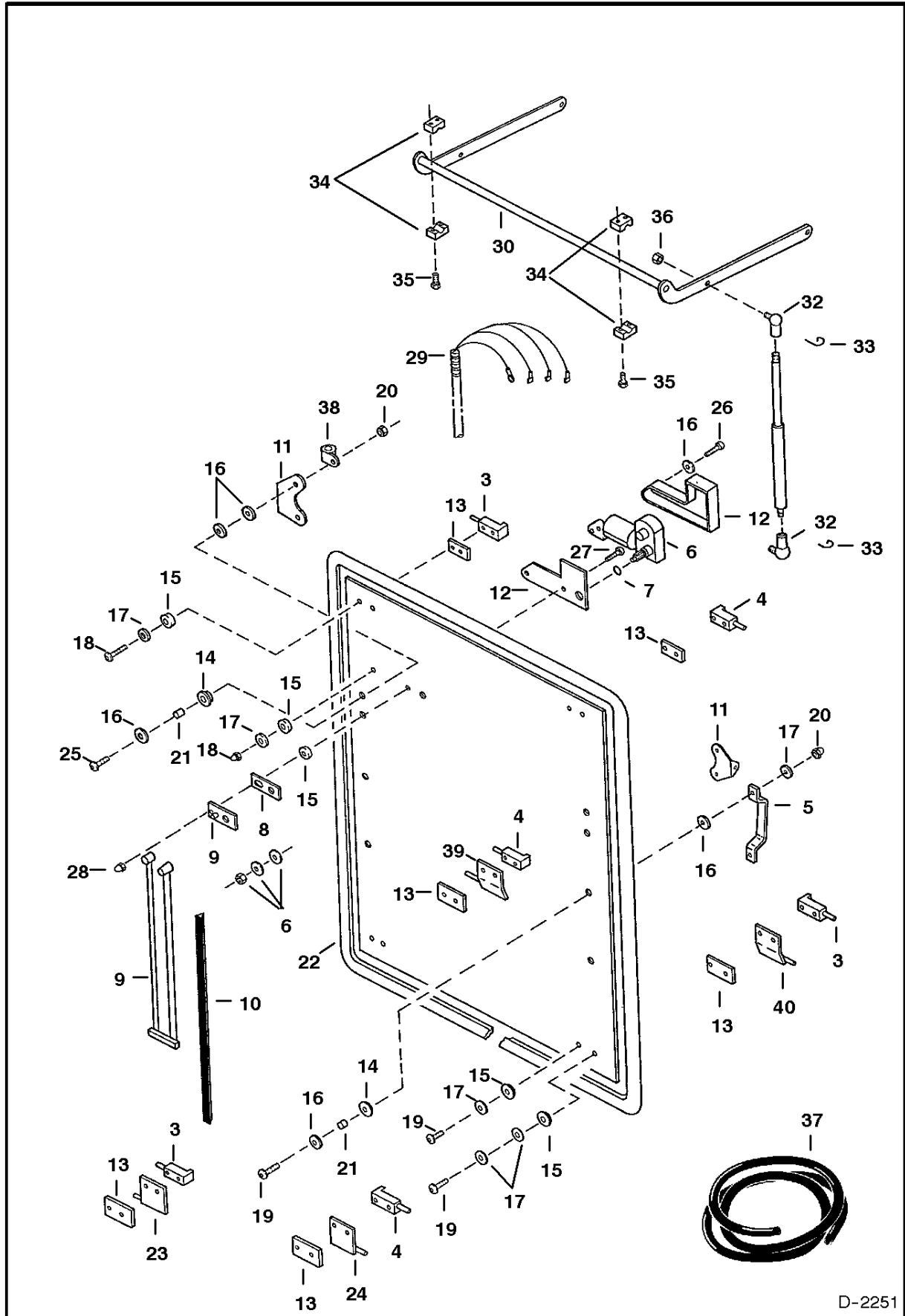
OPERATOR CAB

Ref.N°	Part N°	Description	Remarks	Serial N°	Qty.
1	SALES	CAB ASSY.	W/Refs. OPERATOR CAB(2)- OPERATOR CAB(48) and all items on Pages OPERATOR CAB(3), WINDOW ASSY(5), OPERATOR CAB(6) & HEATER(8) -		1
2	NAP	CAB	Weldment - Order complete Cab Assy. from Gwinner Sales - Was 628839 [A]		1
3		WINDOW	Front - see page OPERATOR CAB(2)		1
4	6664103	NUT	Acorn #10		3
5	6628898	CONSOLE	Was 6664564 [A]		1
6	6669315	SWITCH	Wiper/Washer-Was 6665398[A]		1
7	6664084	DOME LIGHT			1
7	6665367	BULB	Was 6655055 [A]		1
8	6664049	SCREW	Dome Light Mounting		2
9	6513469	FUSE HOLDER	Was 6654166 [A]		1
9	6656270	FUSE	5amp.		1
10	6648358	GROMMET			1
11	6628899	INSULATION	Headliner - Was 6664161 [A]		1
12	6806131	WINDOW	Curved - Was 6664176 [A]		1
13	6664172	WINDOW	Rear - Seal - Used W/Ref. OPERATOR CAB(52)		1
14	6664175	GLASS	Lower Front - W/Mounting Holes & Notch	20001 - xxxxx	1
15	6664171	GLASS	Left		1
16	NAP	SEAL	105'(2680mm) long - Order Ref. OPERATOR CAB(49)		1
17	6628900	ROD	Door Release - Was 6664137 [A]		1
18	6628902	PLATE	Was6664134 [A]		3
19	6664146	SEAL			1
20	6628901	LATCH	Door Hold Open - Was 6664135 [A]		1
21	6664085	BUSHING			8
22	6660979	NUT	Push On		1
23	6660980	RETAINER	Push On		1
24	6654147	SPRING			1
25	6664068	BOLT	1 1/4' long		4
26	6664056	NUT	Acorn 1/4'		4
27	6648410	BOLT	3/4'		12
28	6664090	WASHER			4
29	6800788	GROMMET	Was 6664087 [A]		4
30	6664086	SPACER			4
31	6664089	GROMMET			4
32	6664065	WASHER			4
33	6664056	NUT	Acorn 1/4'		4
34	NAP	SEAL	36'(914mm) long - Order Ref. OPERATOR CAB(50)		1
35	NAP	SEAL	12'(305mm) long - Order Ref. OPERATOR CAB(50)		2
36	6664559	FASTENER	Insulation		4
37	6664080	PIN	Door Striker - W/Internal Threads		1
37	6649483	PIN	Door Striker-W/External Threads	Was 6654170 [A]	x
38	6664083	COVER			1
39	25E-17	WASHER			1
40	6664562	GROMMET			4
41	61D-7	NUT	Used W/Ref. OPERATOR CAB(37) - W/External Threads - Was 61D-6 [D]		1
41	6664046	BOLT	Used W/Ref. OPERATOR CAB(37) - W/Internal Threads		1
42	6660975	GROMMET			1
43	6670760	GRIP	See Note		2
44	6657095	BOLT	#10 x 1/2"		11
45		DOOR ASSY.	See Page OPERATOR CAB(6)		1
46		WINDOW ASSY.	Right Side - See Page OPERATOR CAB(4)		1
47		HEATER ASSY.	See Page HEATER(7)		1

OPERATOR CAB

Ref.N°	Part N°	Description	Remarks	Serial N°	Qty.
48	NAP	LIGHT	Order - 6668722 - Was 6664106 [A]		2
48	6665700	SEALED BEAM	For Light 6664106		2
48	6664106	LIGHT	Was 6668722 [A]		2
48	6668721	BULB	Replacement Bulb for 6668722		2
49	6664088	SEAL	Bulk - Order Per Foot		x
50	6648416	SEAL	Bulk - Order Per Foot		x
51	6657095	BOLT	#10 x 1/2" - Early Style Cabs		4
51	6801188	SCREW	#10 x 1" - Later Style Cabs		2
52	6654148	SEALANT	Window, Rear - 10 oz. tube		1
53	6654152	SCREW	#10 x 3/4' long		7
54	6665386	SCREW	#10 x 1-3/4' long		3
55	6665366	RETAINER	Glass		8
56	6668111	WINDOW	Lower Front - No Holes - No Notch	xxxxx & Above	1
57	12D-10	NUT	#10		4
58	58G-806	SCREW			2
59	6664075	ASH TRAY			1
60	6630038	WASHER	Spring - See Note		4
61	6801032	HANDLE	L.H. Shown - See Note		1
61	6801033	LATCH	R.H. - See Note		1
62	6800857	BOLT	See Note		2
63	87D-5	NUT	See Note		2
64	NAP	SEAL	56" (1422mm) - Order Ref. OPERATOR CAB(49) - See Note		1
65	NAP	SEAL	33" (838mm) - Order Ref. OPERATOR CAB(49) - See Note		1
66	26GM-6016	BOLT			1
67	6805291	BRACKET			1

OPERATOR CAB (Front Window)

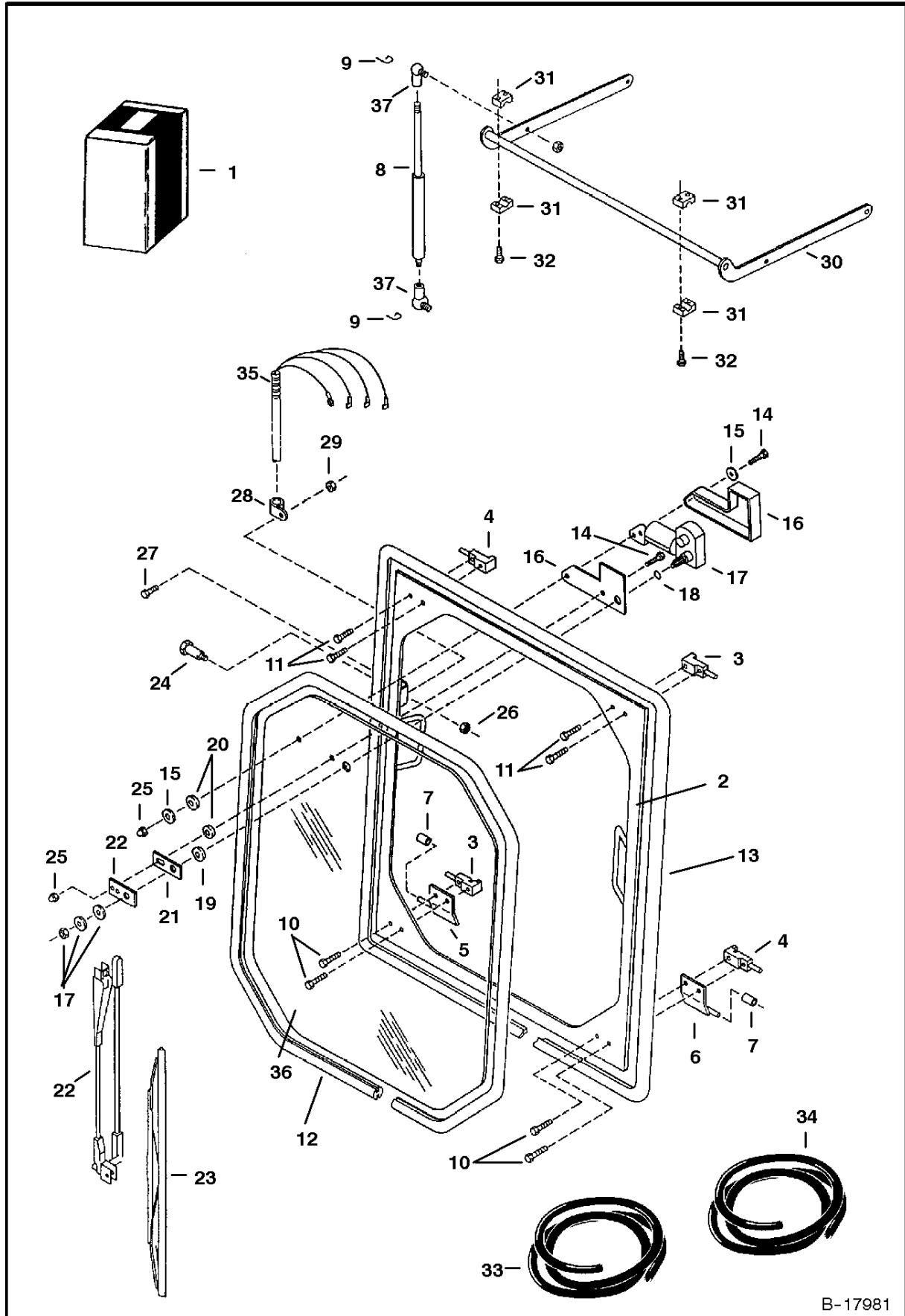


D-2251

OPERATOR CAB

Ref.N°	Part N°	Description	Remarks	Serial N°	Qty.
1	NAP	WINDOW	Assy. Front - W/Ref. OPERATOR CAB(2)-OPERATOR CAB(29) - See BTI E-042- Order 6667155 - Was 6664152 [A]		1
2	NAP	GLASS	Front - See BTI E-042 - Order 6667155 - See Page OPERATOR CAB(3) - Was 6664174 [A]		1
3	6664158	LATCH	Window		2
4	6664157	LATCH	Window		2
5	6664109	HANDLE	Front Window		2
6	6664094	WIPER MOTOR	2 Speed		1
6	6668137	MOTOR	Single Speed		1
7	6664098	O-RING	Wiper Motor Shaft		2
8	6664178	GASKET			1
9	6664095	ARM	Wiper - W/Pivot Mount		1
10	6664096	BLADE	Wiper		1
11	6664151	HINGE	Front Window		2
12	6664177	COVER	Wiper - Motor		1
13	6664159	SPACER	Latch - Plastic - 1/4" (8mm) Thick - Early Style		4
13	6668119	SPACER	Latch - Rubber - 1/8" (4mm) Thick - Later style		4
14	6800788	GROMMET	.813 Mounting Hole - Was 6664087 [A]		8
15	6664089	GROMMET	.406 Mounting Hole [A]		10
16	6664090	WASHER	1' O.D.		20
17	6664065	WASHER	11/16' O.D.		16
18	6664064	BOLT	7/8' long - Used W/Ref. OPERATOR CAB(23) or OPERATOR CAB(24) & 1/4"(8mm) Thick Spacer - Ref. OPERATOR CAB(13)		4
18	6668410	BOLT	3/4" Long -Used W/Ref. OPERATOR CAB(40) or OPERATOR CAB(41) & 1/8" (4mm) Thick Spacer - Ref.OPERATOR CAB(13)		1
19	6664068	BOLT	1 1/4 ' long		8
20	6664056	NUT	Acorn 1/4'		8
21	6664086	SPACER			8
22	NAP	SEAL	136'(3455mm) long - Order Ref. OPERATOR CAB(38)		1
23	6664153	GUIDE PIN	R.H. - Straight Body - Early Style		1
24	6664154	GUIDE PIN	L.H. - Straight Body - Early Style		1
25	6664067	BOLT	1' long		4
26	6664565	BOLT	7/8' long		1
27	6664566	SCREW	3/4' long		1
28	6664103	NUT	Acorn #10		2
29	6669142	HARNESS	Wiper Motor - Single speed		1
30	NAP	HARNESS	Wiper Motor - Two Speed		1
30	6669141	HARNESS	Cab - Was 6628903 [A]		1
31	6803154	LINKAGE	Window Pivot - Was 6664148 [A]		1
32	6664074	CYLINDER	Gas Spring -When 2 Gas Springs are used		2
32	6667348	CYLINDER	Gas Spring - with single gas		1
33	6664073	CLIP	Ball Joint Retainer		4
34	6664072	BALL JOINT	Cylinder		4
35	6664560	BLOCK	Linkage Mount		2
36	6664059	BOLT			4
37	6648364	NUT			2
38	6664088	SEAL	Bulk - Order Per Foot		x
39	30H-21	CLAMP	Wire Harness - Was 30H-18 [A]		2
40	6628879	GUIDE PIN	R.H. - Bent Body - Later Style - Was 6667190 [A]		1
41	6628880	GUIDE PIN	L.H. - Bent Body - Later Style - Was 6667191 [A]		1

OPERATOR CAB (Front Window)

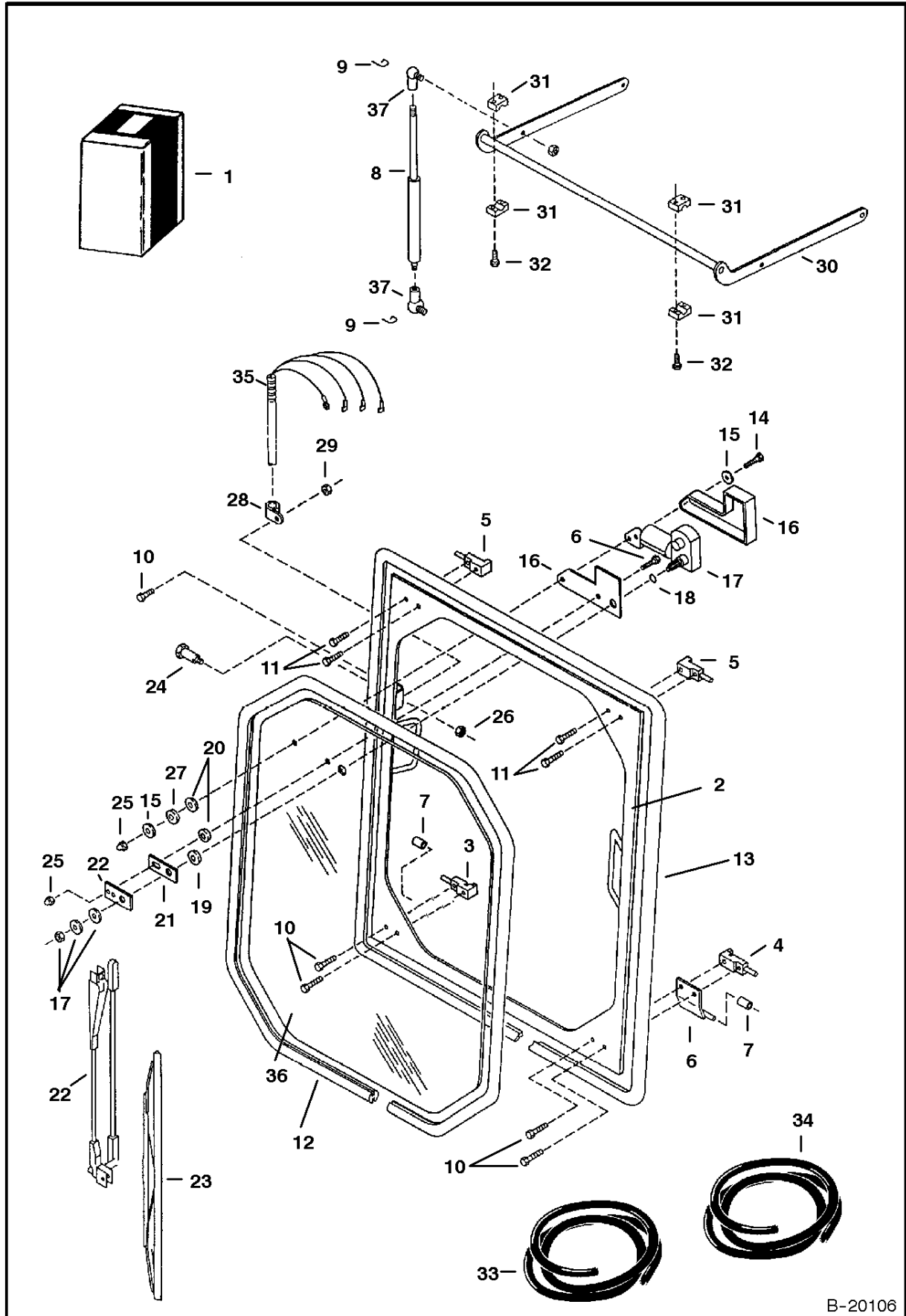


B-17981

OPERATOR CAB

Ref.N°	Part N°	Description	Remarks	Serial N°	Qty.
1	NAP	WINDOW ASSY	Incl. Refs. OPERATOR CAB(1)-OPERATOR CAB(6), OPERATOR CAB(10)-OPERATOR CAB(17), OPERATOR CAB(19)-OPERATOR CAB(23), OPERATOR CAB(1
1	6667155	WINDOW ASSY#	Incl. Refs. OPERATOR CAB(2)-OPERATOR CAB(15), OPERATOR CAB(19), OPERATOR CAB(20), OPERATOR CAB(23)-OPERATOR CAB(29) & OPERATOR		x
2	6628875	FRAME	Was 6667194 [A]		1
3	6628883	LATCH	Was 6667192 [A]		2
3	6628889	HANDLE			2
4	6628884	LATCH	Was 6667193 [A]		2
4	6628889	HANDLE			2
5	6628879	GUIDE PIN	Was 6667190 [A]		1
6	6628880	GUIDE PIN	Was 6667191 [A]		1
7	6667202	ROLLER			1
8	6667199	GAS SPRING			1
9	6649245	CLIP	Ball Joint Retainer - Was 6664073 [A]		2
10	6667197	BOLT	3/4' long		4
11	6667196	BOLT	5/8' long		4
12	NAP	SEAL	119' (3018mm) long - Order Ref. OPERATOR CAB(33)		1
13	NAP	SEAL	135' (3429mm) long - Order Ref. OPERATOR CAB(34)		1
14	6664566	SCREW			2
15	6664065	WASHER			2
16	6664177	COVER	Wiper Motor		1
17	6664094	WIPER MOTOR	2 Speed		1
17	6668137	MOTOR	Single Speed		1
18	6664098	O-RING	Wiper Motor Shaft		1
19	6667201	SPACER			1
20	6664085	BUSHING			2
21	6664178	GASKET	Was 6667200 [A]		1
22	6664095	ARM	Wiper - W/Pivot Mount		1
23	6664096	BLADE	Wiper		1
24	6800857	BOLT	Was 6664108 [A]		2
25	6664103	NUT			2
26	6648364	NUT			2
27	6667198	BOLT			1
28	30H-21	CLAMP	Was 30H-18 [A]		1
29	6664056	NUT			1
30	6803154	LINKAGE	Was 6628891 [A]		1
31	6664560	BLOCK	Linkage Mount		2
32	6664059	BOLT			4
33	6648405	SEAL	Bulk - Sold Per Foot		x
34	6664088	SEAL	Bulk - Sold Per Foot		x
35	6669142	HARNESS	Wiper - Was 6628903 [A]		1
35	6669141	HARNESS	Cab - Was 6628903 [A]qcom3@- }H-10{M		x
36	6667195	GLASS			1
37	6649244	BALL STUD	Was 6664072 [A]		2

OPERATOR CAB (Front Window)

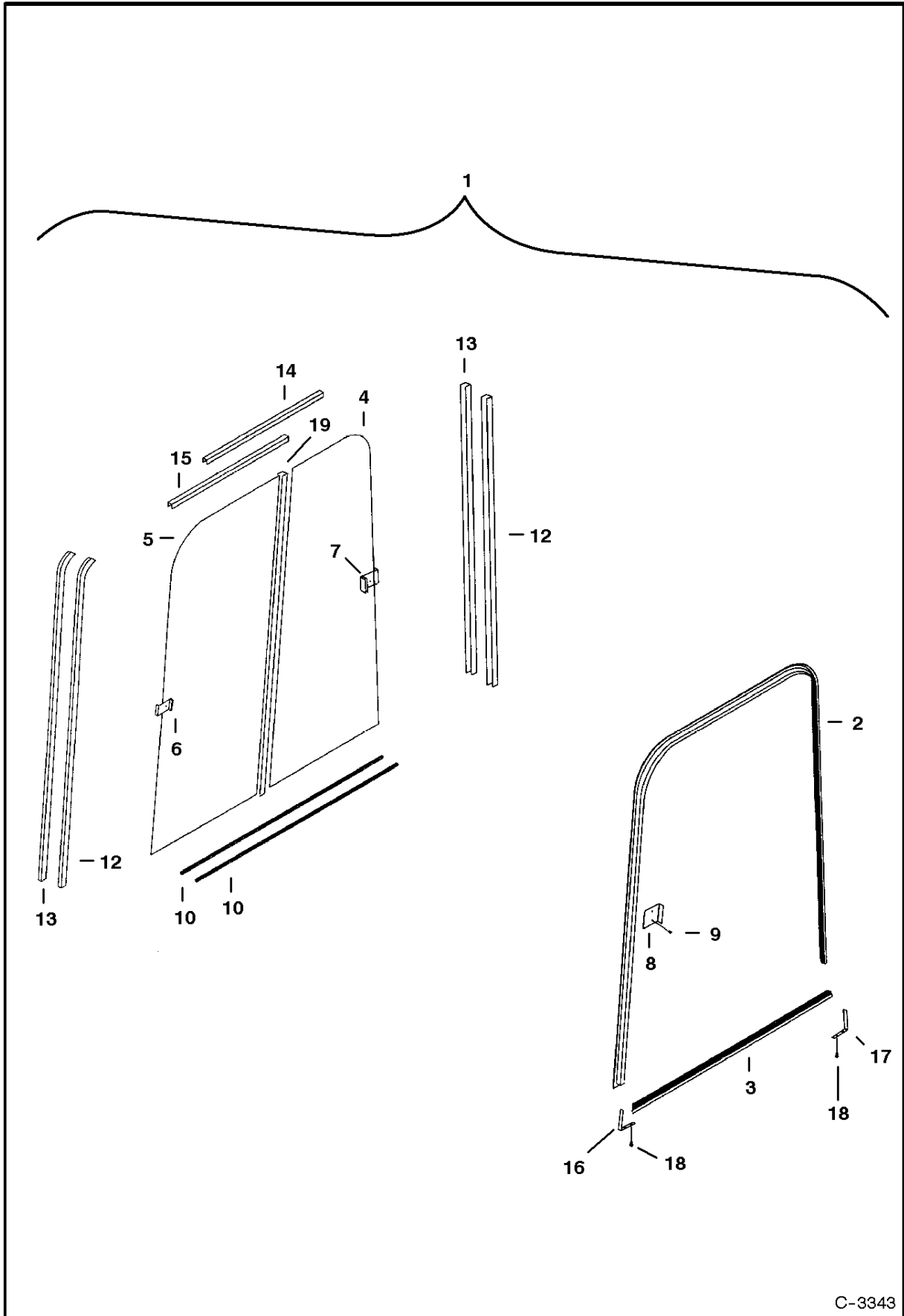


B-20106

OPERATOR CAB

Ref.N°	Part N°	Description	Remarks	Serial N°	Qty.
1	6800880	WINDOW ASSY	Incl. Refs. OPERATOR CAB(1)-OPERATOR CAB(6), OPERATOR CAB(10)-OPERATOR CAB(17), OPERATOR CAB(19)-OPERATOR CAB(23), OPERATOR CAB(1
2	6800876	FRAME			1
3	6801502	LATCH	R.H.		1
3	6628889	HANDLE			1
4	6801503	LATCH	L.H.		1
4	6628889	HANDLE			1
5	6801420	CHANNEL			2
6	6801188	SCREW			1
7	6800873	ROLLER			1
8	6667199	GAS SPRING			1
9	6649245	CLIP	Ball Joint Retainer		2
10	6667196	BOLT	5/8" Long		5
11	6630207	RIVET			4
12	NAP	SEAL	119" (3018mm) Long - Order Ref. OPERATOR CAB(33)		1
13	NAP	SEAL	180" (4572mm) Long - Order Ref. OPERATOR CAB(34)		1
14	6664566	SCREW			2
15	6664065	WASHER			2
16	6664177	COVER	Wiper Motor		1
17	6668137	MOTOR	Single Speed		1
18	6664098	O-RING	Wiper Motor Shaft		1
19	6667201	SPACER			1
20	6664085	BUSHING			2
21	6664178	GASKET			1
22	6664095	ARM	Wiper - W/Pivot Mount		1
23	6664096	BLADE	Wiper		1
24	6800857	BOLT			2
25	6664103	NUT			2
26	6648364	NUT			2
27	6801059	WASHER			1
28	30H-21	CLAMP			1
29	6669138	NUT			1
30	6803154	LINKAGE	Was 6628891 [A]		1
31	6664560	BLOCK	Linkage Mount		2
32	6664059	BOLT			4
33	6514301	SEAL	Bulk - Sold Per Foot		x
34	6670759	SEAL	Bulk - Sold Per Foot		x
35	6669142	HARNESS	Wiper		1
35	6669141	HARNESS	Cab`com34. }H~10{M		x
36	6667195	GLASS			1
37	6649244	BALL STUD			2

OPERATOR CAB
(Right Hand Window)

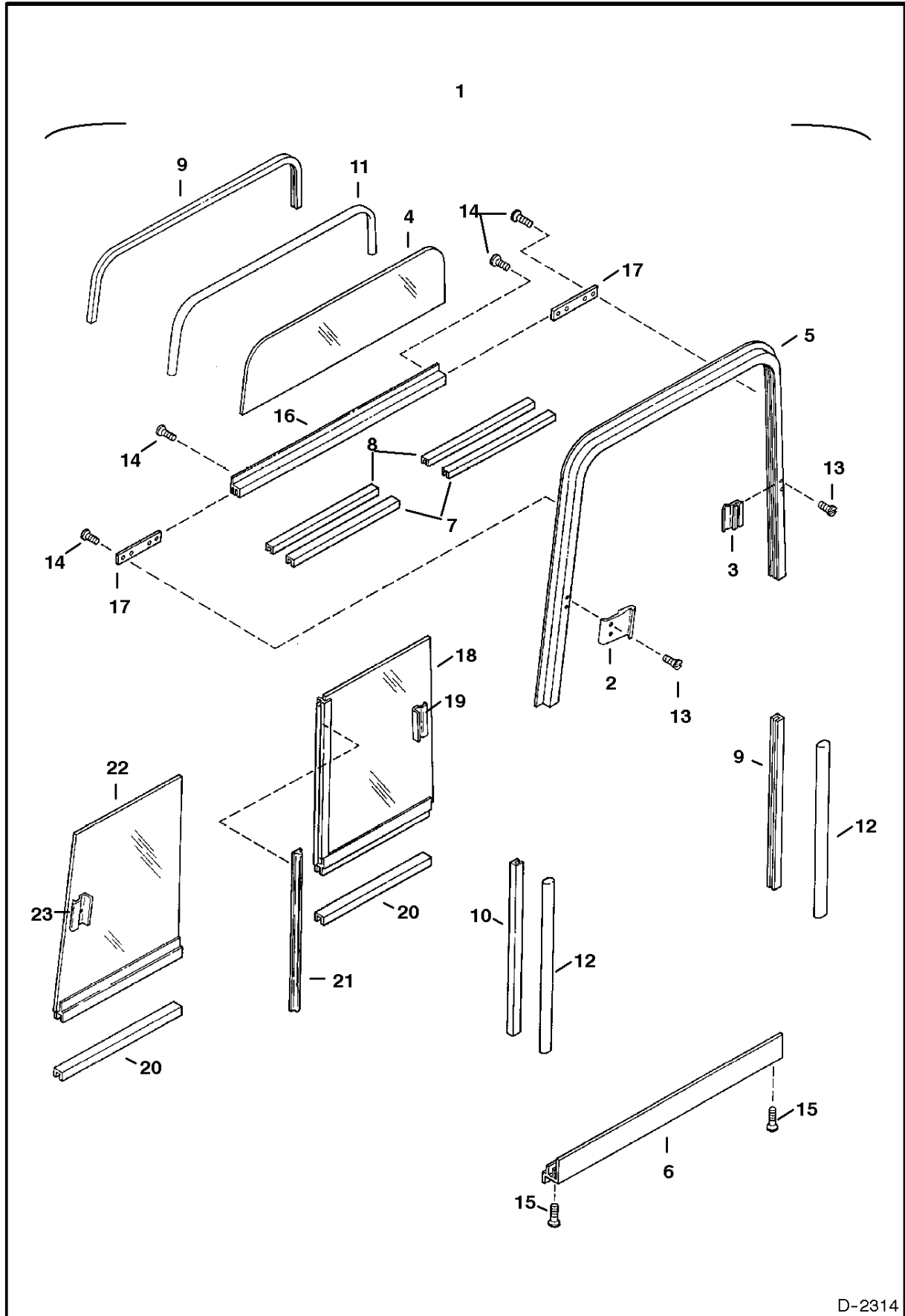


C-3343

OPERATOR CAB

Ref.N°	Part N°	Description	Remarks	Serial N°	Qty.
1	NAP	WINDOW ASSY.	Sliding - W/Refs. OPERATOR CAB(2)-OPERATOR CAB(18) - Order 6667616 - Was 6664173 [A]		1
2	6664865	FRAME	Top		1
3	6664866	FRAME	Bottom		1
4	6664863	GLASS	Rear Side		1
5	6664864	GLASS	Front Side		1
6	6665026	LATCH ASSY	Front - Incl. Mtg. Hardware		1
7	6665027	LATCH	Rear - Incl. Mtg. Hardware		1
8	6664862	RETAINER	Latch		1
9	NAP	SCREW	Was 6664875[A]		2
10	6664872	CHANNEL	Front Inner		1
11	6664868	CHANNEL	Window Stop		1
12	6664867	CHANNEL	Rear Inner		1
13	6664871	CHANNEL	Rear Outer		1
14	6664869	CHANNEL	Top Outer		1
15	6664870	CHANNEL	Top Inner		1
16	6664860	BRACKET	Front Corner		1
17	6664861	BRACKET	Rear Corner		1
18	6664876	SCREW			4
19	NAP	SUPPORT	Window - Was 6665914[A]		1

**WINDOW ASSY
(R. H. Slide Window)**

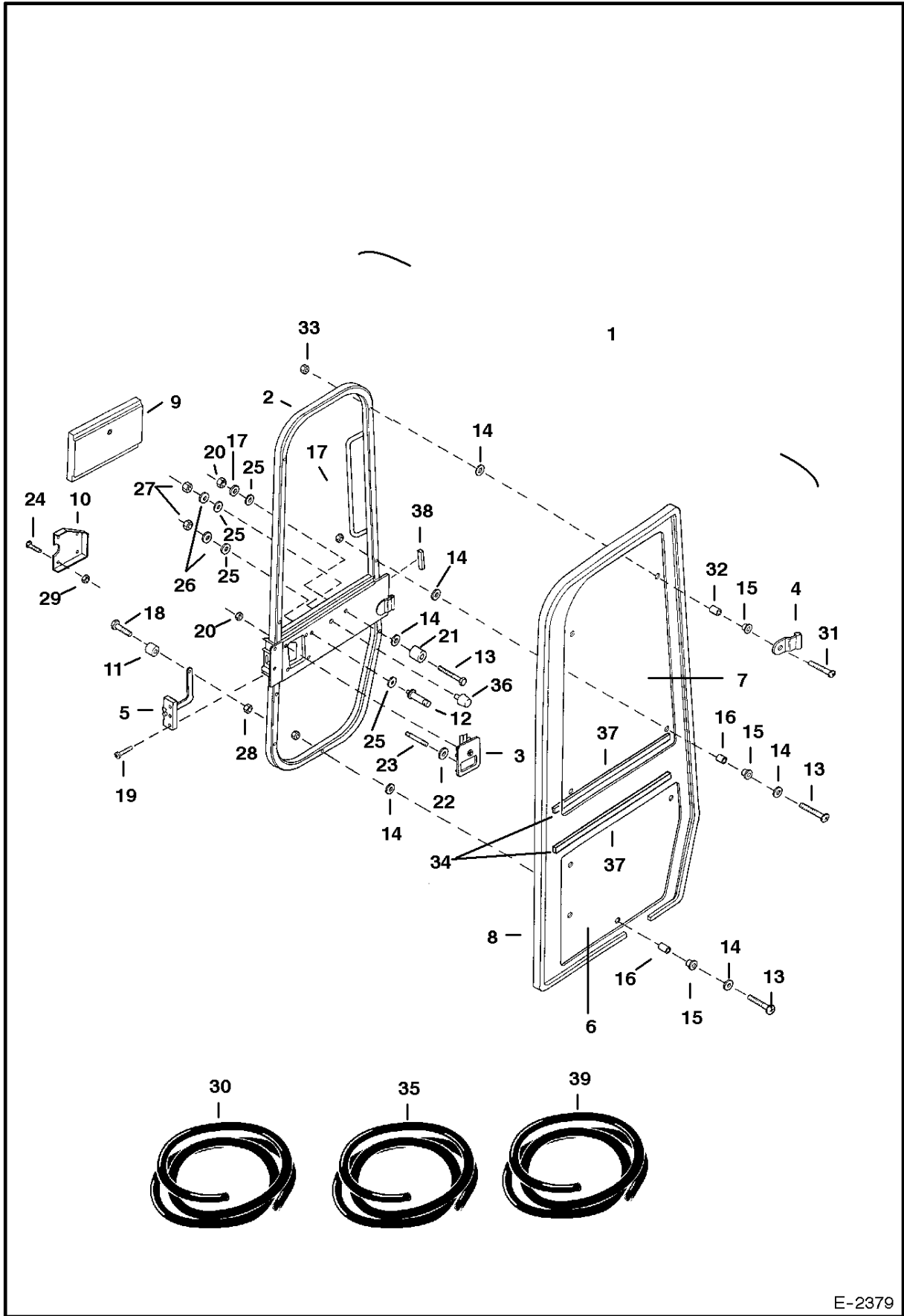


D-2314

WINDOW ASSY

Ref.N°	Part N°	Description	Remarks	Serial N°	Qty.
1	6667616	WINDOW ASSY	R.H. - W/Refs. 2-24		1
2	6667593	LATCH			1
3	6667594	LATCH			1
4	6667595	GLASS	upper		1
5	6667596	FRAME			1
6	6667597	FRAME			1
7	6667598	CHANNEL	20' (508mm) long		2
8	6667599	CHANNEL	18' (457mm) long		2
9	6667600	CHANNEL	28.5' (724mm) long		2
10	6667601	CHANNEL	28.5' (724mm) long		1
11	6667602	TRIM	rubber - 47' (1194mm) long		1
12	6667603	TRIM	rubber - 32.5' (826mm) long		2
13	6667604	SCREW			4
14	6667605	SCREW			4
15	6664876	SCREW	Was 6667606 [A]		2
16	6667607	FRAME	W/Ref. 17		1
17	6667608	BRACKET			2
18	6667609	GLASS ASSY	W/Ref. 19-21		1
19	6667610	LATCH ASSY	W/Mounting Hardware		1
20	6667612	CHANNEL	20' (508mm) long - Was 6667615 [A]		2
21	6667611	SEAL	28.5' (724mm) long		1
22	6667613	GLASS ASSY	W/Ref. 22 & 23		1
23	6665026	LATCH ASSY	W/Mounting Hardware - Was 6667614 [A]		1

OPERATOR CAB (Door)



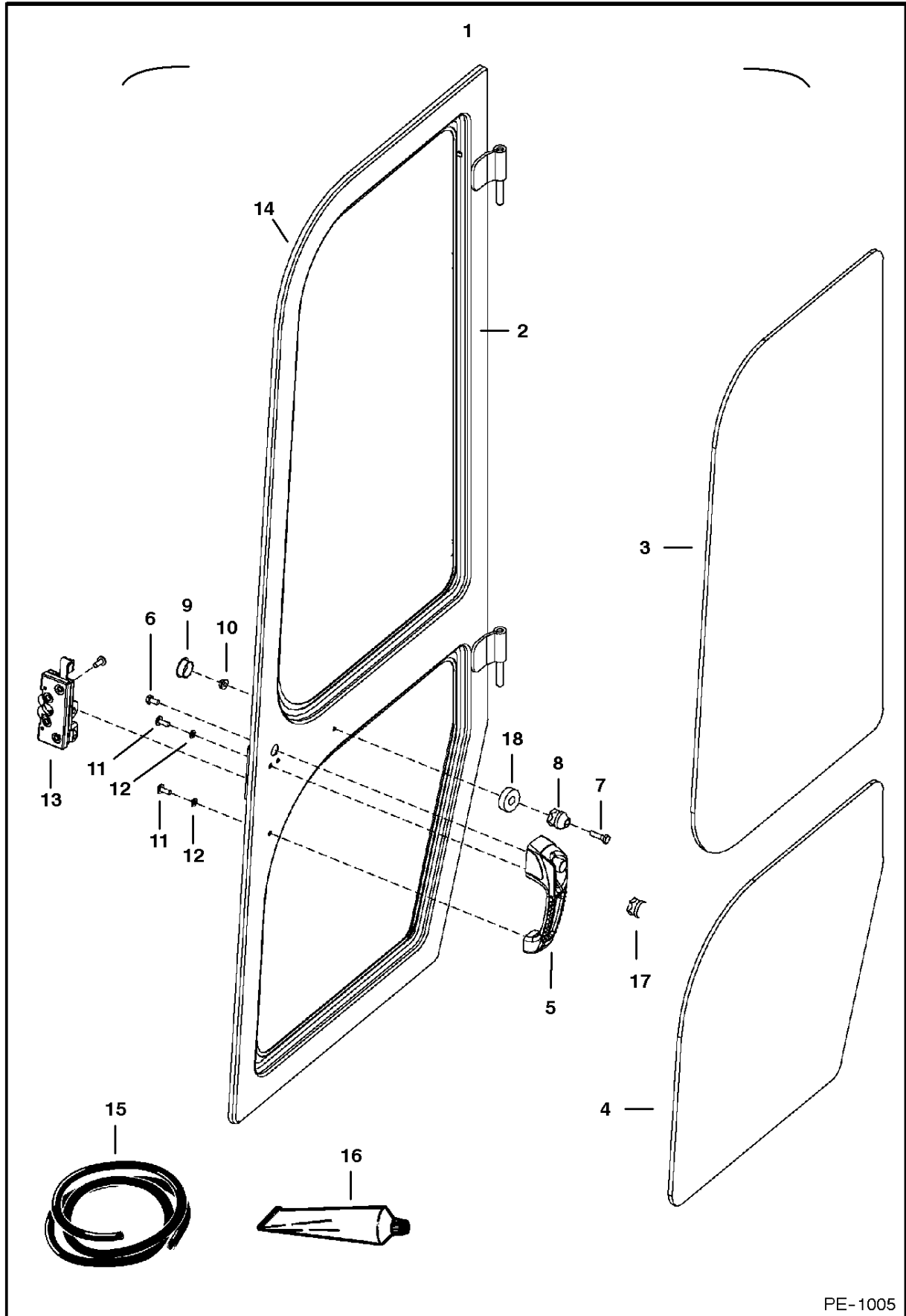
E-2379

320 Excavator Parts
S/N 20000 & Above

OPERATOR CAB

Ref.N°	Part N°	Description	Remarks	Serial N°	Qty.
1	NAP	DOOR ASSY.	W/Ref. OPERATOR CAB(2)-OPERATOR CAB(21) - Order 6805226 See BTI E - Was 6664568 [A]		1
2	NAP	DOOR	weldment - See BTI E - Order 6805226 - Was 6628864 [A]		1
3	6661631	LATCH	outside		1
3	6587458	KEY SET			1
4	6628872	HINGE	top - Was 6664139 [A]		1
5	6664572	LATCH	inside - with handle		1
6	6664573	GLASS	bottom		1
7	6664574	GLASS	top		1
8	NAP	SEAL	162' (4115mm) long - Order Ref. OPERATOR CAB(30)		1
9	NAP	INSULATION	Was 6667841 [A]		1
10	6664576	COVER	door latch		1
11	6664092	KNOB	door latch		1
12	NAP	RETAINER	door hold open - See BTI E-058 - Was 6628873[A]		1
13	6664066	BOLT	2'(51mm) Long		8
14	6664090	WASHER	1'(25mm) O.D.		16
15	6800788	GROMMET	Was 6664087 [A]		8
16	6664086	SPACER	3/8' (9,5mm) long		8
17	6664056	NUT	acorn 1/4'		7
17	6667837	NUT	hex 1/4'		1
18	85G-1010	SCREW			1
19	6648410	BOLT			4
20	85D-4	NUT			4
21	6664569	BUMPER	Bolt on		1
22	61D-6	NUT	Was 6648418 [B]		1
23	38C-816	BOLT	striker - Was 6667838 [A]		1
24	6657095	BOLT			4
24	26GM-6016	BOLT	self-tapping - Was 6667839[A]		4
25	6648397	WASHER			2
26	4E-5	WASHER			1
27	61D-5	NUT			1
28	12D-10	NUT	Was 6664050 [A]		1
29	6664570	NUT	clip - not welded on - later models		4
30	6664088	SEAL	Bulk - Sold Per Foot		x
31	6667842	BOLT	2-1/4' (957mm) long		1
32	6667840	SPACER	3/8' (9,5mm) long		1
33	6667843	NUT	5/16'		1
34	NAP	SEAL	48' (1219mm) long - order Ref. OPERATOR CAB(35)		2
35	6654162	SEAL	bulk - sold per foot		x
36	6649040	BUMPER	W/Threaded Stud		1
37	NAP	FOAM	23"- Order Ref. OPERATOR CAB(39)		2
38	NAP	FOAM	6" - Order Ref. OPERATOR CAB(39)		1
39	6584202	FOAM	bulk - sold per foot		x

OPERATOR CAB (Door)

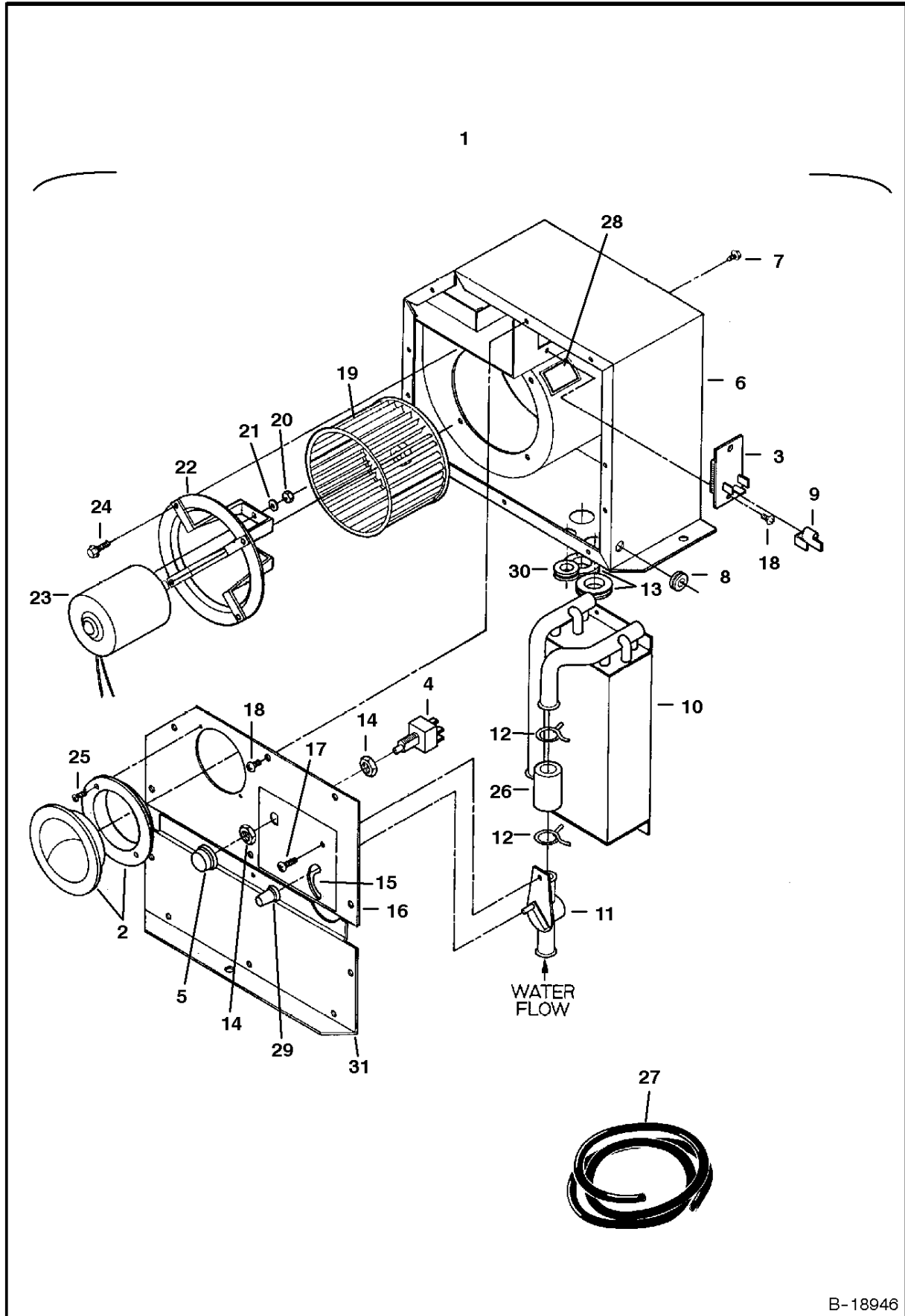


PE-1005

OPERATOR CAB

Ref.N°	Part N°	Description	Remarks	Serial N°	Qty.
1	6805226	DOOR ASSY	Ref. OPERATOR CAB(2) - OPERATOR CAB(14)		1
2	6805469	DOOR			1
3	6805470	GLASS	Upper		1
4	6805471	GLASS	Lower		1
5	6675282	HANDLE			1
6	17C-408	BOLT			1
7	17C-416	BOLT			1
8	6675385	PLUG	hold open		1
9	6648391	PLUG	hole		1
10	55D-4	NUT			1
11	6803202	SCREW			5
12	6EM-60	WASHER			2
13	6674666	LATCH			1
14	NAP	SEAL	door - Order Ref. OPERATOR CAB(15) - 158" (4013,2 mm) long		1
15	6675410	SEAL	bulk?com3KE }H~10{M		x
16	6675462	URETHANE	10.5 oz. tube, black		x
17	6675386	SOCKET	hold open		1
18	6808446	SPACER			1

HEATER (With 3 Speed Fan Motor)

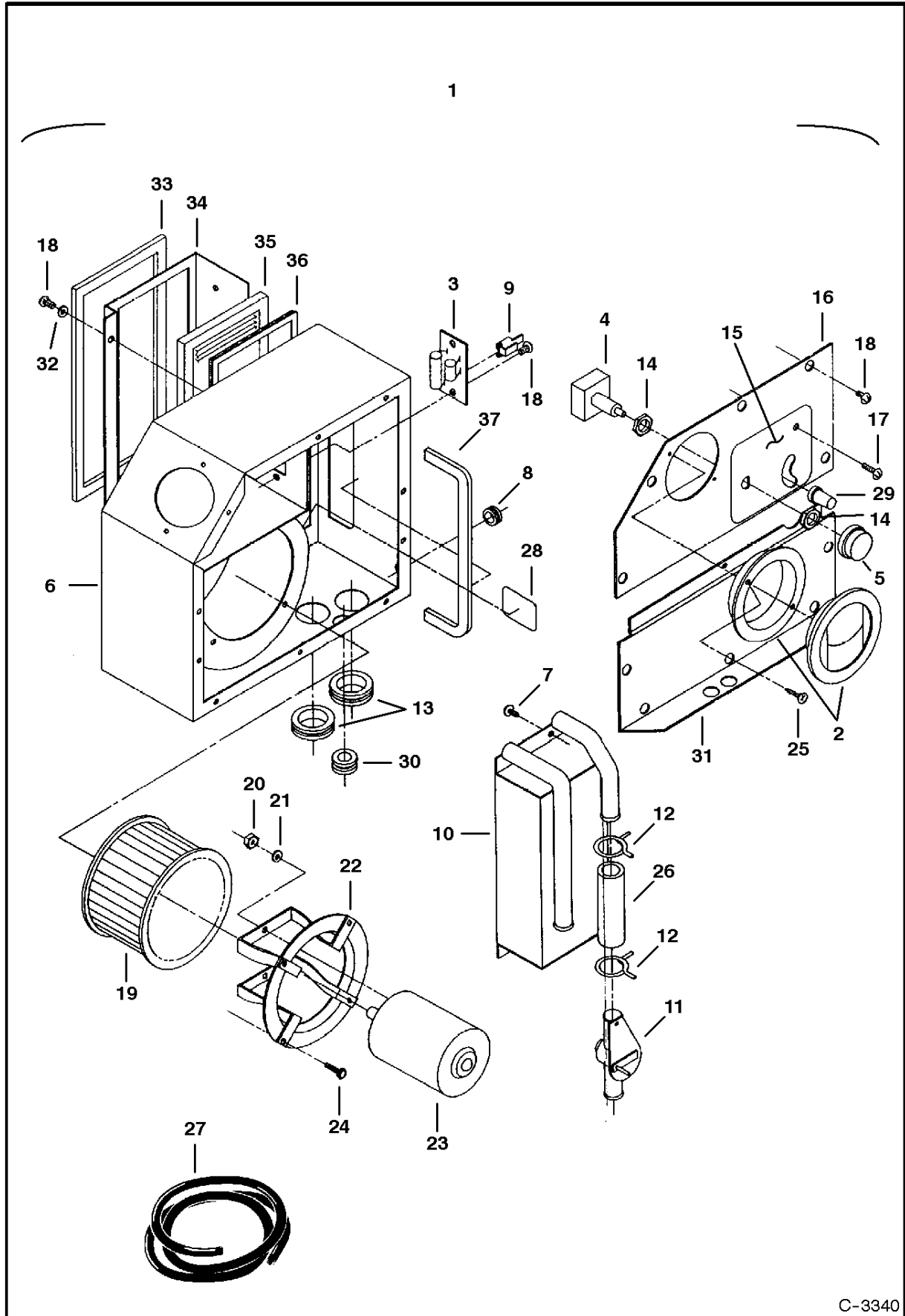


B-18946

HEATER

Ref.N°	Part N°	Description	Remarks	Serial N°	Qty.
1	6663968	HEATER	W/Refs. HEATER(2)-HEATER(26) & HEATER(28) - HEATER(31)		1
2	6664342	LOUVER			2
3	6632584	RESISTOR			1
4	6660659	SWITCH	Fan		1
5	6660822	KNOB	Fan Switch		1
6	6664345	HOUSING	Heater		1
7	6654195	SCREW			4
8	6654196	GROMMET			1
9	6660654	CONNECTOR			1
10	6654790	CORE	Heater		1
11	6654792	VALVE	Water Shut Off		1
12	6654192	CLAMP			2
13	6641056	GROMMET			2
14	6624435	NUT			2
15	6664343	DECAL			1
16	6664346	COVER	Top		1
17	85G-808	SCREW			1
18	6641066	SCREW			11
19	6648468	FAN			1
20	6641073	NUT			1
21	6641072	WASHER			1
22	6648467	BRACKET			1
23	6660658	MOTOR	12 Volt-3 Speed		1
24	6640162	BOLT			4
25	6662678	SCREW			4
26	NAP	HOSE	4'(102mm) long - Order Ref. HEATER(27)		1
27	889269	HOSE	Bulk - Sold Per Foot		x
28	6660656	DECAL	Wiring		1
29	6660881	KNOB	Water Valve		1
30	6664344	GROMMET			1
31	6664347	COVER	Bottom		1

HEATER
(With 3 Speed Fan Motor & With Filter)

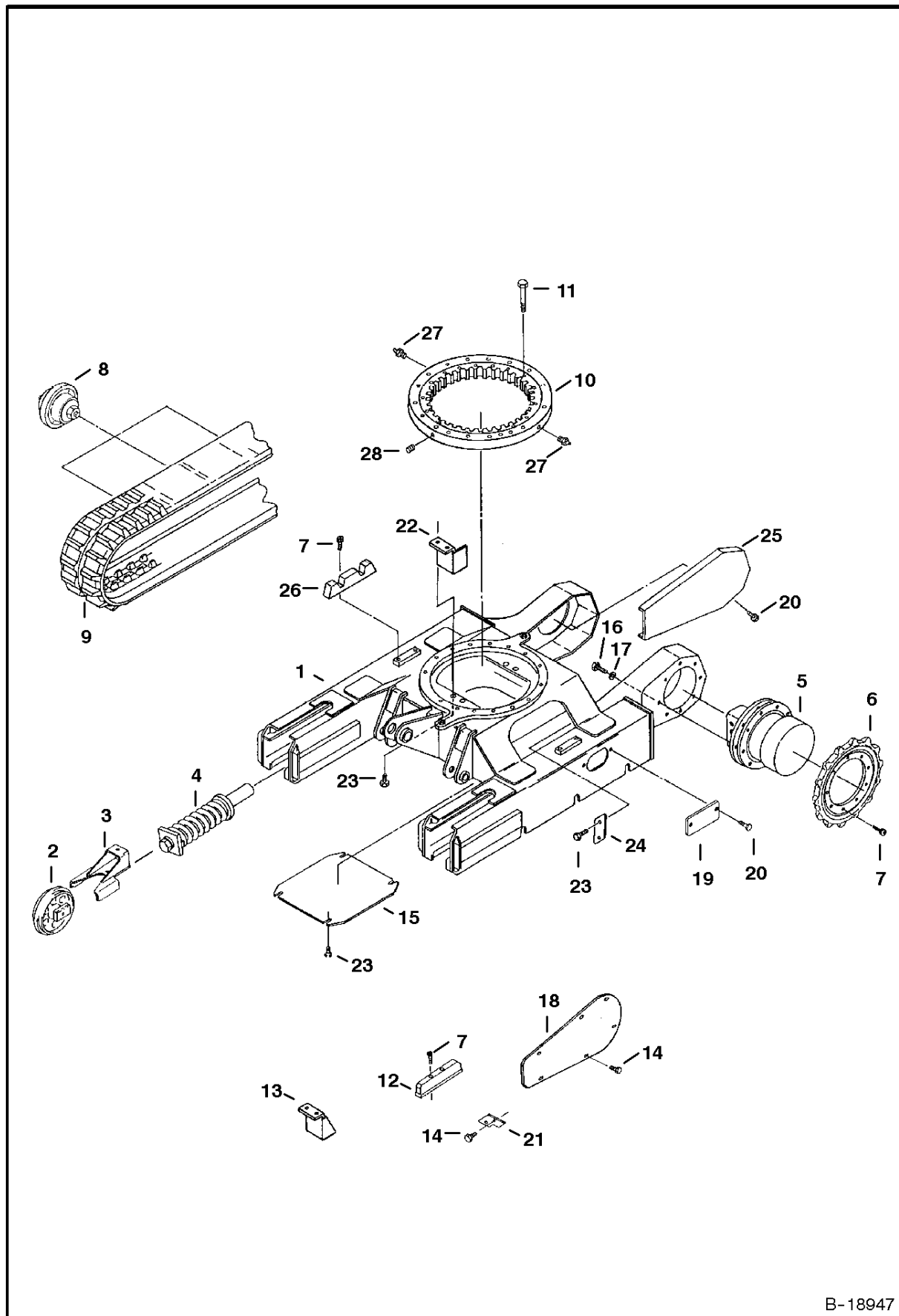


C-3340

HEATER

Ref.N°	Part N°	Description	Remarks	Serial N°	Qty.
1	6665242	HEATER	W/Ref. HEATER(2)- HEATER(26) & HEATER(28) - HEATER(31)		1
2	6664342	LOUVER			2
3	6632584	RESISTOR			1
4	6660659	SWITCH	Fan		1
5	6660822	KNOB	Fan Switch		1
6	6665516	HOUSING	Heater		1
7	6665518	SCREW			4
8	6654196	GROMMET			1
9	6660654	CONNECTOR			1
10	6654790	CORE	Heater		1
11	6654792	VALVE	Water Shut Off		1
12	6654192	CLAMP			2
13	6641056	GROMMET			2
14	6624435	NUT			2
15	6664343	DECAL			1
16	6664346	COVER	Top		1
17	85G-808	SCREW			1
18	6641066	SCREW			17
19	6648468	FAN			1
20	6641073	NUT			2
21	6641072	WASHER			2
22	6648467	BRACKET			1
23	6660658	MOTOR	12 Volt-3 Speed		1
24	6640162	BOLT			4
25	6662678	SCREW			4
26	NAP	HOSE	4' (102mm) long - Order Ref. 27		1
27	889269	HOSE	Bulk - Sold Per Foot		x
28	6660656	DECAL	Wiring		1
29	6660881	KNOB	Water Valve		1
30	6664344	GROMMET			1
31	6665519	COVER	Bottom		1
32	12E-10	WASHER			4
33	6665512	SEAL			1
34	6665513	PLATE			1
35	6665514	FILTER			1
36	6665515	SEAL			1
37	6665517	SEAL			1

UNDERCARRIAGE

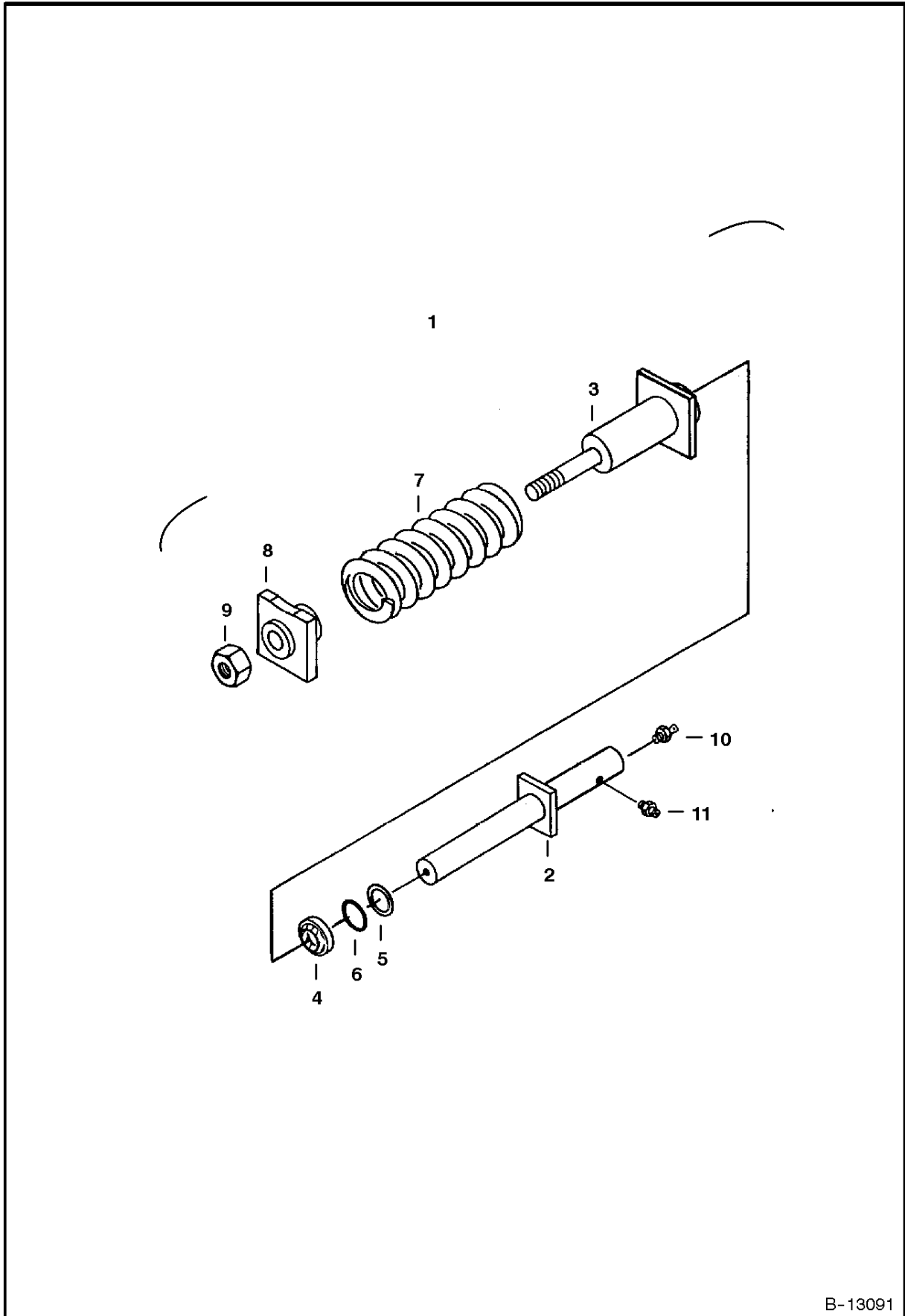


B-18947

UNDERCARRIAGE

Ref.N°	Part N°	Description	Remarks	Serial N°	Qty.
1	NAP	FRAME	Order (1) 6596099, Ref. UNDERCARRIAGE(4), (2) 6589499 & (2) Ref. UNDERCARRIAGE(25), (12) Ref. UNDERCARRIAGE(20), (2) Ref. UNDE	20001 - 22539	1
1	6596099	FRAME	Was 6589282 [A]	22540 & Above	1
2	6533626	IDLER	See Page FRONT IDLER(3)		2
3	6589538	YOKE	Was 6533649 [A]		2
4	6534880	SPRING ASSY.	Recoil - See Page RECOIL SPRING (1)	20001 - 22539	2
4	NAP	SPRING ASSY.	Recoil - See Page RECOIL SPRING (2) - Was 6589499 [A]	22540 & Above	2
5	6651892	MOTOR	Drive - See Page TRAVEL MOTOR(7)-TRAVEL MOTOR(8)- See BTI E-049		2
6	6539720	SPROCKET			2
7	3GM-1025	SCREW			22
8	6800510	ROLLER	Track - See Page TRACK ROLLER(4) - Was 6533654 [A]		6
9	6652044	TRACK	P/N shown is for (1) track - P/N and Bridgestone is embossed on inside of track		2
9	6666927	TRACK	P/N shown is for (1) track - P/N, Spencer Moulton is embossed on inside of track - if track 6666927 is used as a replace - m		2
9	6662300	TRACK	For European Sales only - P/N shown is for (1) track		2
10	6652015	SWING BEARING	W/Refs. 27 & 28 - 110 teeth on Swing Gear		1
10	6652969	SEAL	Swing Bearing		1
11	10CM-1045	SCREW			18
12	6533657	PLATE	Slide	20001 - 22539	2
13	6539417	MOUNT	For Swivel Joint 6658956	20001- 20661	2
14	29CM-816	BOLT			18
15	6533655	COVER			1
16	1CM-1030	BOLT			16
17	6EM-100	WASHER			16
18	6533658	COVER		20001 - 22539	2
19	6533656	COVER			2
20	26GM-1002O	BOLT	Was 29CM-1020 [B]		12
21	6533874	COVER		20001 - 22539	2
22	NAP	MOUNT	For Swivel Joint 6664409 -order 6588784 and (2) Ref. UNDERCARRIAGE(23) - Was 6588785 [A]	20662 & Above	2
22	6588784	MOUNT	Also order (2) Ref. UNDERCARRIAGE(23) - this is part of the frame, Ref. 1 after S/N xxxxx	20001 - xxxxx	2
23	26GM-8016	SCREW	Self tapping		12
24	6596203	COVER		22540 & Above	2
25	6589305	COVER		22540 & Above	2
26	6589639	PLATE	Slide	22540 & Above	2
27	6652970	GREASE ZERK	Was 6533968[A]		2
28	6652962	SET SCREW			1

**RECOIL SPRING
(S/N 20001 - 22539)**

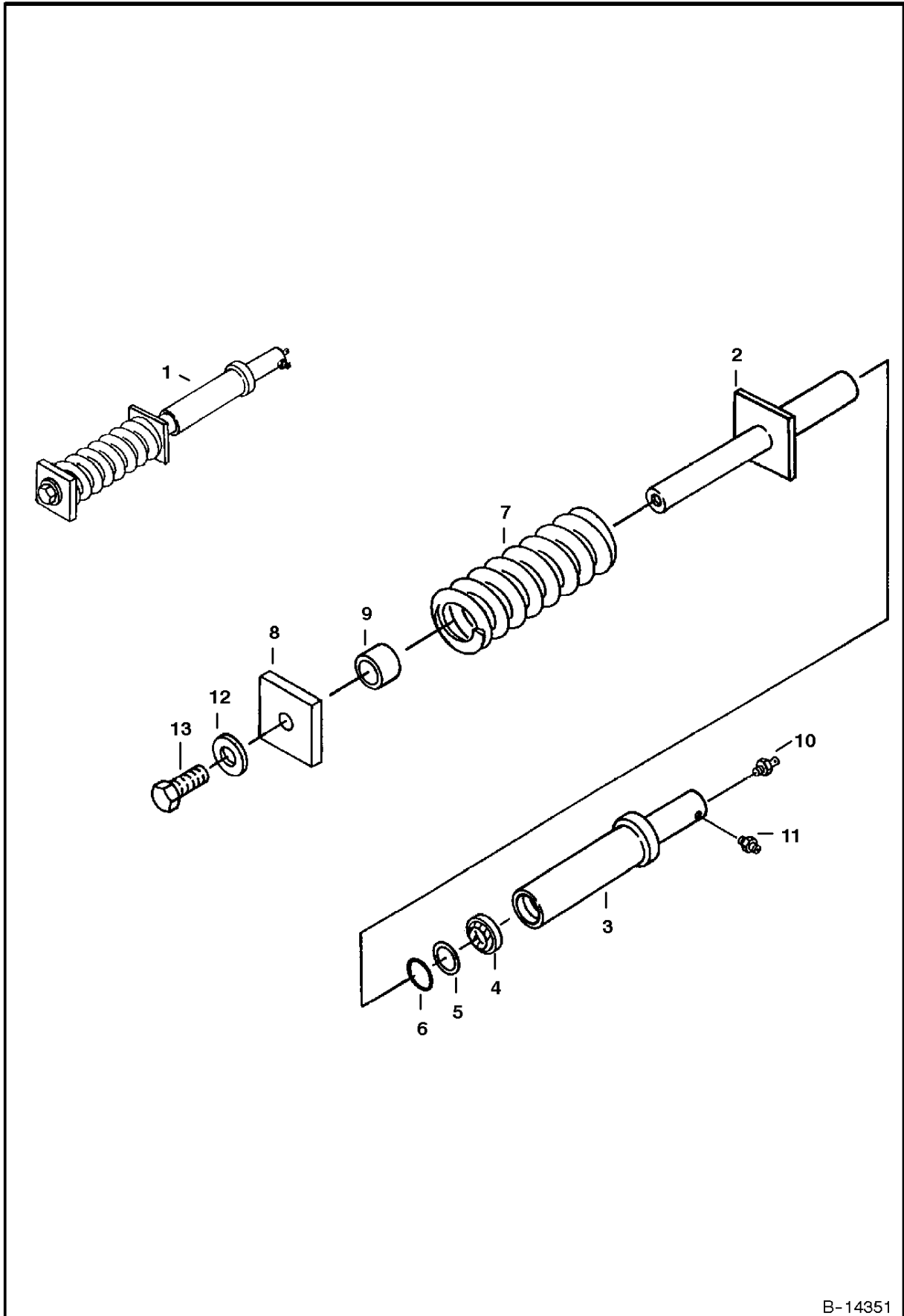


B-13091

RECOIL SPRING

Ref.N°	Part N°	Description	Remarks	Serial N°	Qty.
1	6534880	SPRING ASSY.	Ref. RECOIL SPRING(2)-RECOIL SPRING(11)	20001 - xxxxx	2
2	6587422	SHAFT			1
3	6534881	CYLINDER			1
4	1657085	SEAL			1
5	80K-218	WASHER	Backup		1
6	58K-218	O-RING			1
7	6533648	SPRING			1
8	6533639	PLATE			1
9	39DM-24	NUT			1
10	6645812	BLEEDER			1
11	6655752	GREASE ZERK			1

**RECOIL SPRING
(S/N 22540 & Above)**

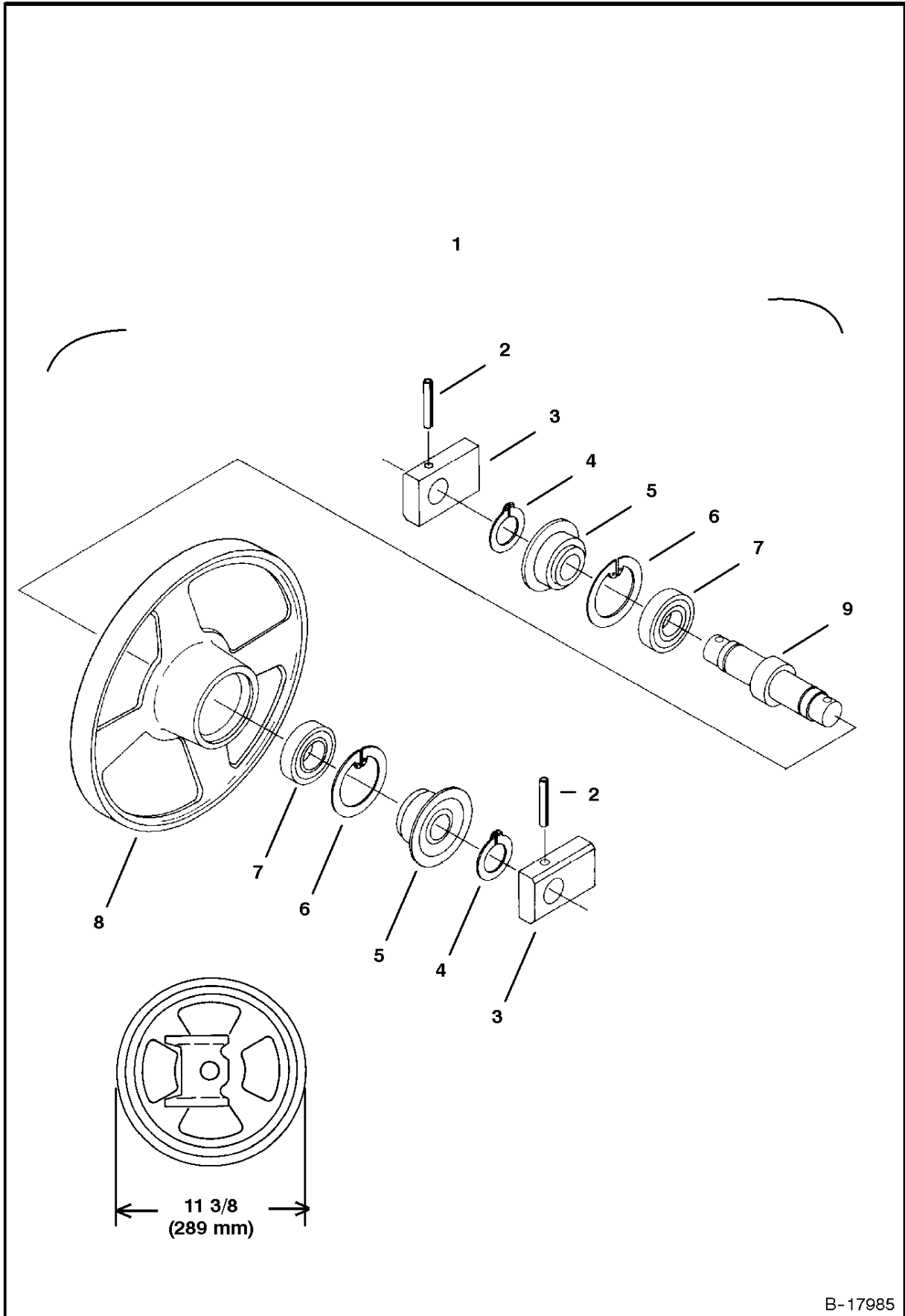


B-14351

RECOIL SPRING

Ref.N°	Part N°	Description	Remarks	Serial N°	Qty.
1	NAP	SPRING ASSY.	Ref. 2-13 - Was 6589499 [A]		2
2	6589532	SHAFT			1
3	6589529	CYLINDER			1
4	6665208	SEAL	Was 1657085[A]		1
5	73K-218	WASHER	Backup - Was 80K-218[A]		1
6	58K-218	O-RING			1
7	6533648	SPRING			1
8	6589537	PLATE			1
9	6589536	SPACER			1
10	6645812	BLEEDER			1
11	6655752	GREASE ZERK			1
12	1EM-240	WASHER			1
13	1CM-2470	BOLT			1

FRONT IDLER



B-17985

**Thank you very much
for your reading.**

**Please click here and go
back to our website.**

**Then, you can download
the complete manual
instantly.**

No waiting.

Have questions.

Please write to me.

**All the problems will be answered
within 12 hours.**

aservicemanuapdf@yahoo.com